

# **EXHIBIT II**

## **Part 1 of 14**

No. 1

JUNE, 1938

# ACTION COMICS

10¢



# \$25

## Cash Prizes!

HERE'S HOW TO WIN! AND YOU DON'T  
HAVE TO BE AN ARTIST OR A  
CARTOONIST EITHER!

Turn to the feature, CHUCK DAWSON, and you'll notice that it is printed in black and white.

Now take out your crayons and color the first page (title page) of CHUCK DAWSON.

Then, when you've colored it the best you possibly can, tear out the page, put it in an envelope and send it into this magazine.

A cash award of \$1.00 each will be paid to the best 25 pages submitted.

THIS IS A CINCH !



**BE SURE TO ADDRESS YOUR ENVELOPES TO  
COLOR-PAGE CONTEST**

**Action Comics—480 Lexington Ave., New York City**

*All entries must be in by midnight, Monday, June 6, 1938*

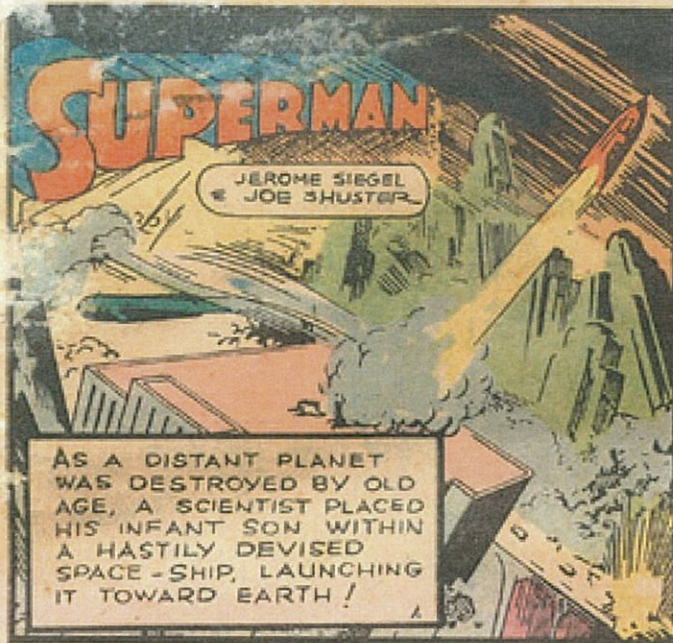
## ACTION COMICS

**VINCENT A. SULLIVAN**

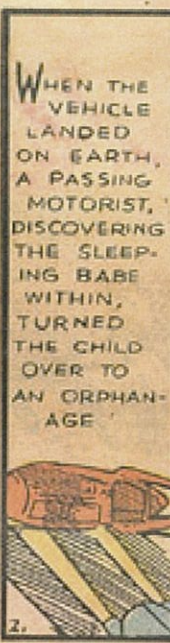
*Editor*

ACTION COMICS, published monthly by Detective Comics, Inc., 480 Lexington Ave., New York, N. Y. Second class entry pending at Post Office, New York, N. Y., under the Act of March 3, 1879. Subscription rates: 12 issues by mail in the United States, its possessions, and Mexico, South America and Spain, \$1.50; elsewhere \$2.00. The Publisher accepts no responsibility for unsolicited material. Entire contents copyright 1938 by Detective Comics, Inc. For advertising rates, address:

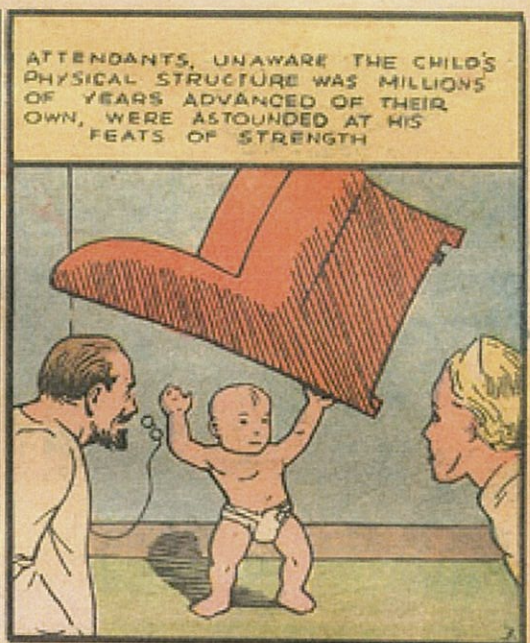
GILMAN, NICOLL & R. H. HANCOCK, 19 West 4th St., N. Y.  
Branches—Boston, Philadelphia, Chicago, St. Louis, St. Paul, San Francisco, Seattle



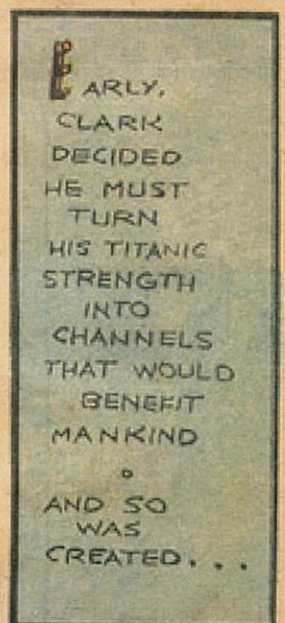
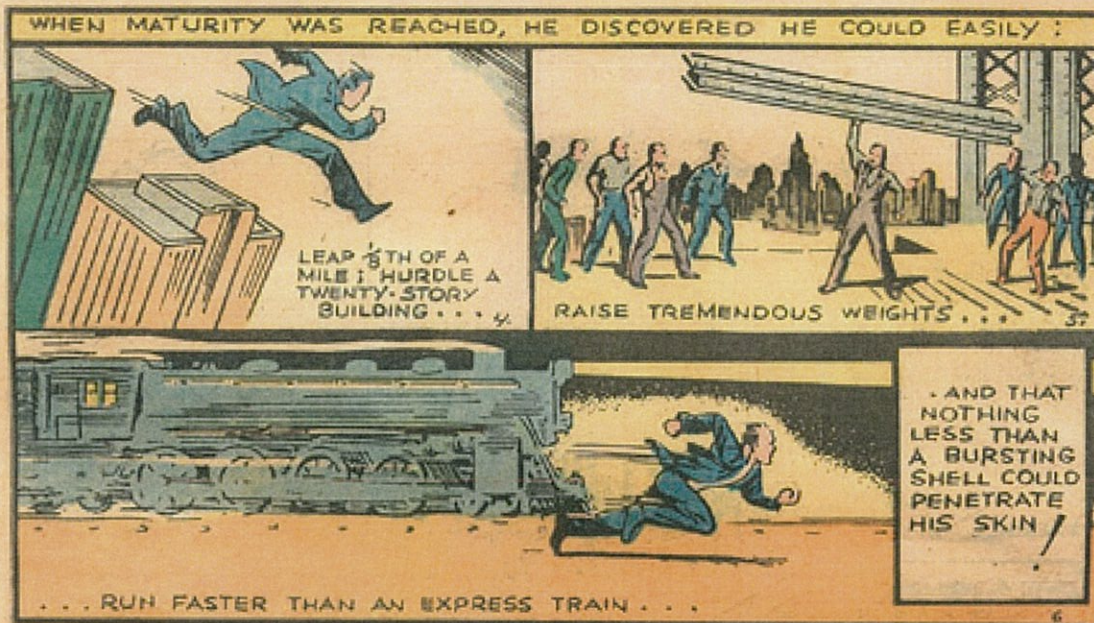
AS A DISTANT PLANET WAS DESTROYED BY OLD AGE, A SCIENTIST PLACED HIS INFANT SON WITHIN A HASTILY DEvised SPACE-SHIP, LAUNCHING IT TOWARD EARTH!



WHEN THE VEHICLE LANDED ON EARTH, A PASSING MOTORIST, DISCOVERING THE SLEEPING BABE WITHIN, TURNED THE CHILD OVER TO AN ORPHAN-AGE



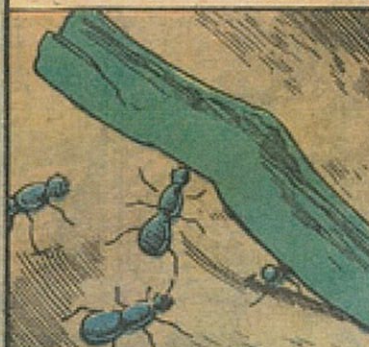
ATTENDANTS, UNAWARE THE CHILD'S PHYSICAL STRUCTURE WAS MILLIONS OF YEARS ADVANCED OF THEIR OWN, WERE ASTOUNDED AT HIS FEATS OF STRENGTH



## A SCIENTIFIC EXPLANATION OF CLARK KENT'S AMAZING STRENGTH

KENT HAD COME FROM A PLANET WHOSE INHABITANTS' PHYSICAL STRUCTURE WAS MILLIONS OF YEARS ADVANCED OF OUR OWN. UPON REACHING MATURITY, THE PEOPLE OF HIS RACE BECAME GIFTED WITH TITANIC STRENGTH!

-- INCREDIBLE? NO! FOR EVEN TODAY ON OUR WORLD EXIST CREATURES WITH SUPER-STRENGTH!



THE LOWLY ANT CAN SUPPORT WEIGHTS HUNDREDS OF TIMES ITS OWN.



THE GRASSHOPPER LEAPS WHAT TO MAN WOULD BE THE SPACE OF SEVERAL CITY BLOCKS

A TIRELESS FIGURE RACES THRU THE NIGHT. SECONDS COUNT. . . DELAY MEANS FORFEIT OF AN INNOCENT LIFE .



THE GOVERNOR'S ESTATE FINALLY IS REACHED .



WHAT DO YOU MEAN BY KNOCKING THIS HOUR OF THE NIGHT?

I MUST SEE THE GOVERNOR. IT'S A MATTER OF LIFE AND DEATH!



SEE HIM IN THE MORNING!



I'LL SEE HIM NOW!



THIS IS ILLEGAL ENTRY! I'LL HAVE YOU ARRESTED!

ANSWER MY QUESTION! ARE YOU GOING TO TAKE ME TO THE GOVERNOR?



NO! I WON'T!

THEN I'LL TAKE YOU TO HIM!

