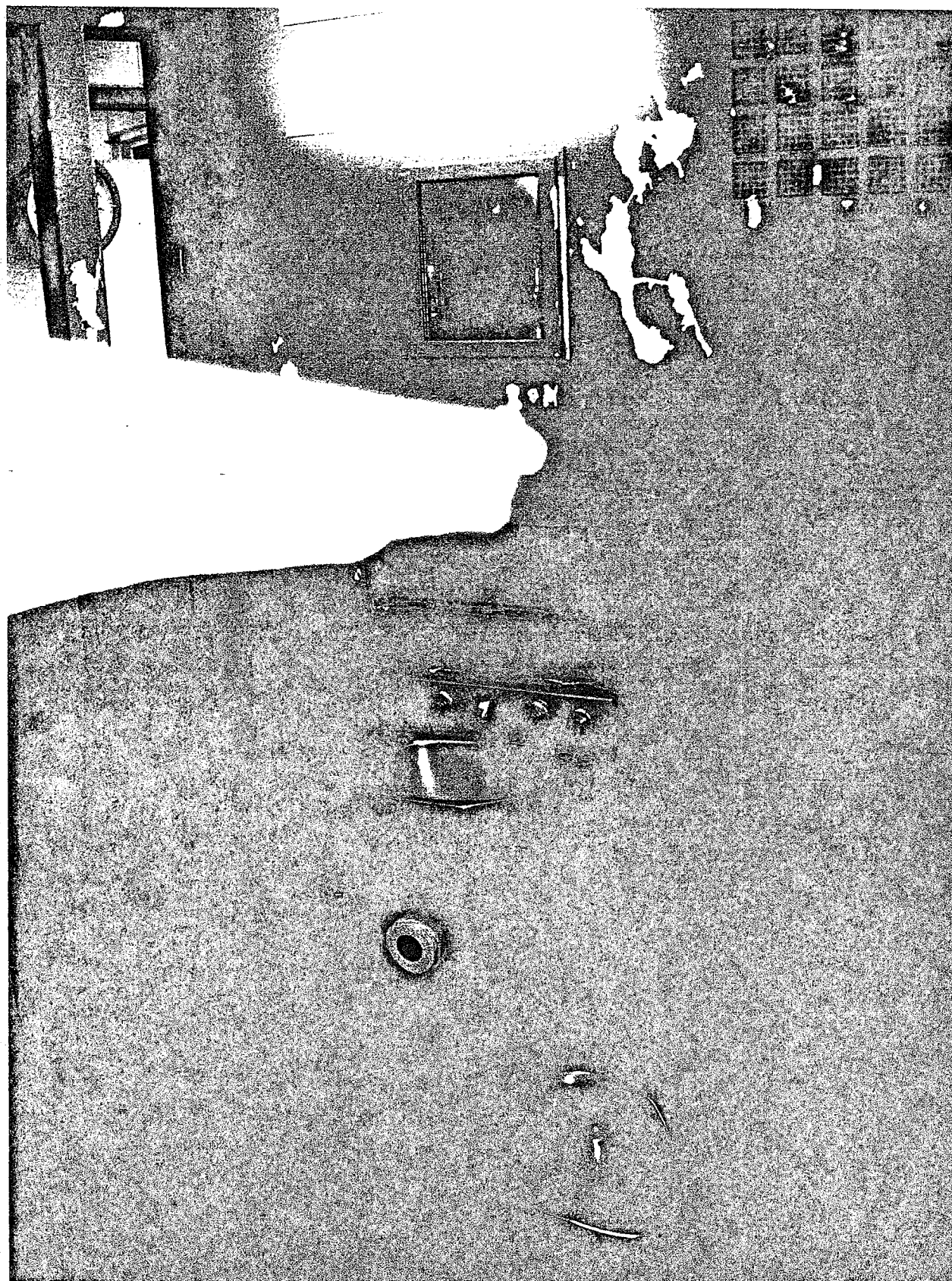


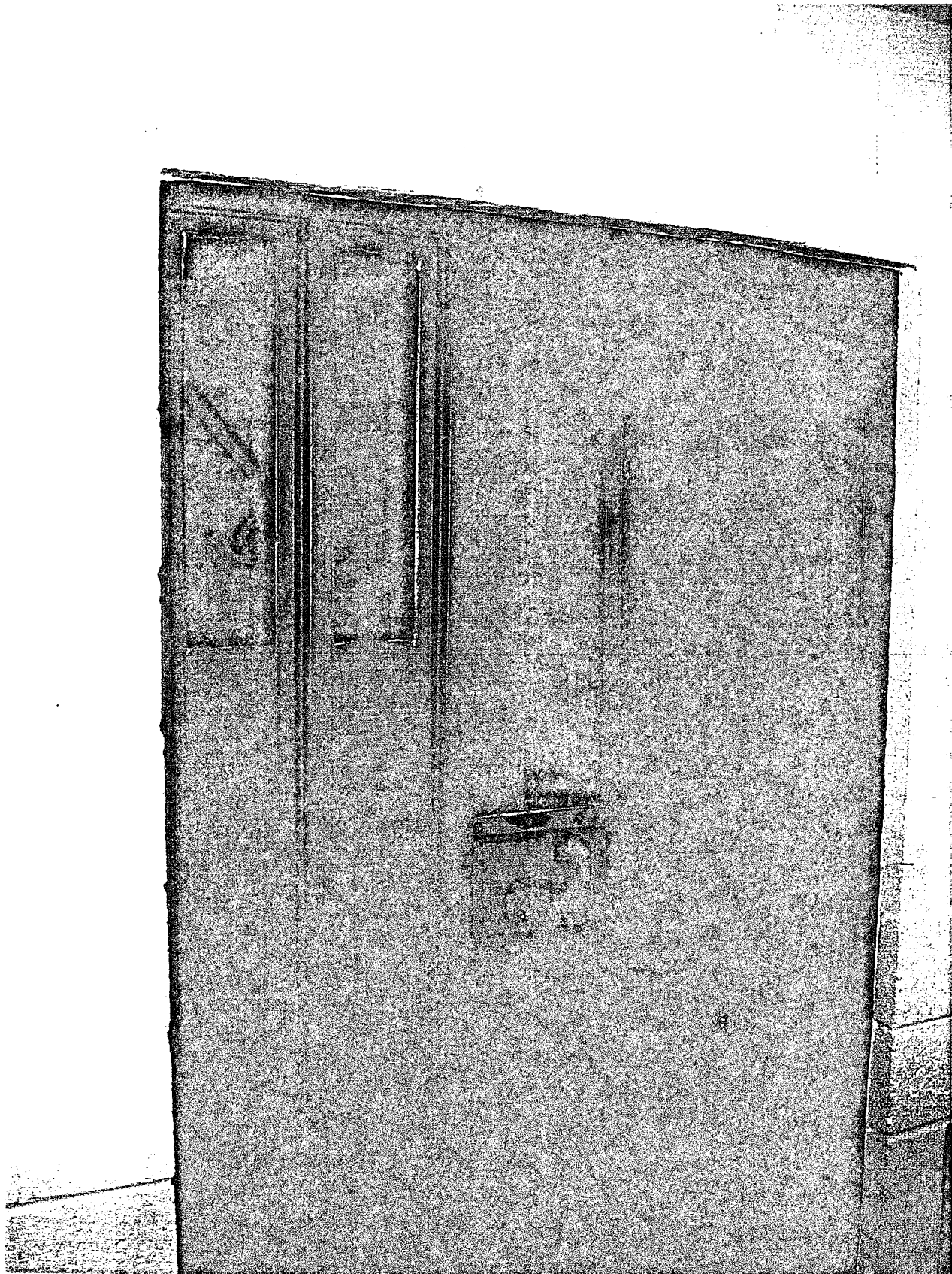
**MOHAVE COUNTY, ARIZONA
CRIMINAL JUSTICE NEEDS ASSESSMENT AND PRE-DESIGN STUDY**

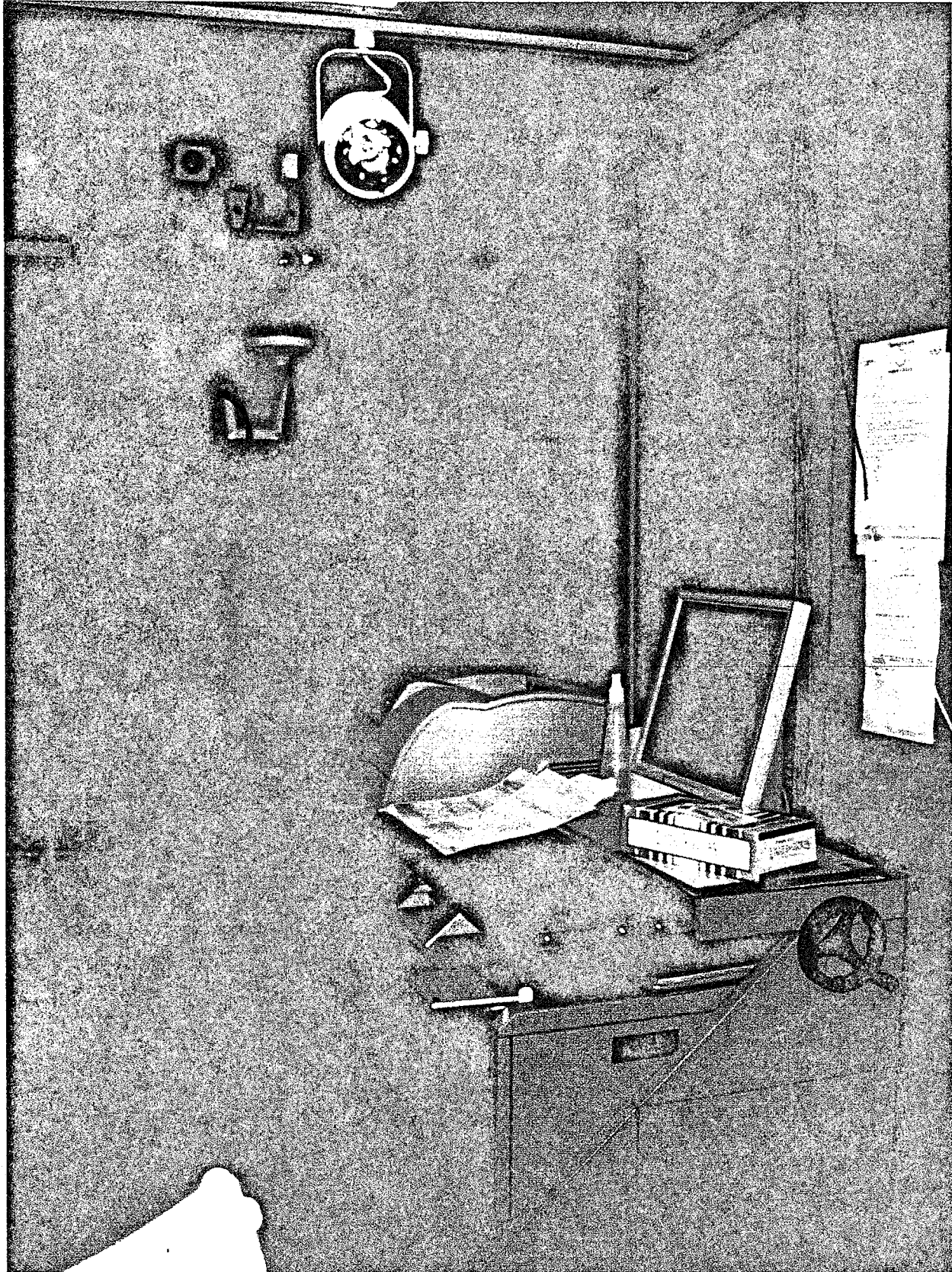
**FINAL REPORT
APPENDIX C
PHOTOGRAPHS**



*RNL Design in association with Chinn Planning, Inc./Craig Boersema
May 15, 2006*

Photo 3





*RNL Design in association with Chinn Planning, Inc./Craig Boersema
May 15, 2006*

Photo 5

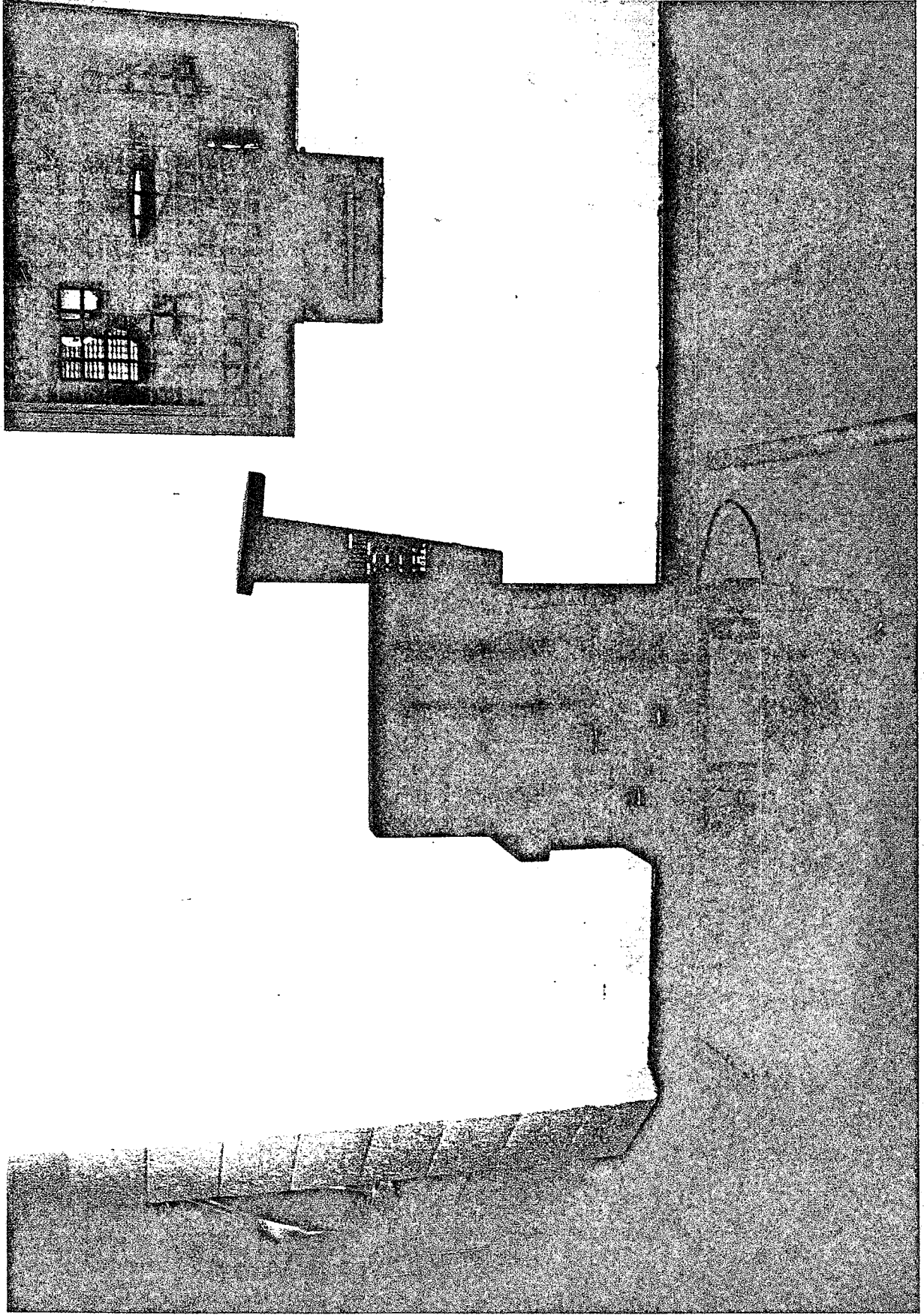
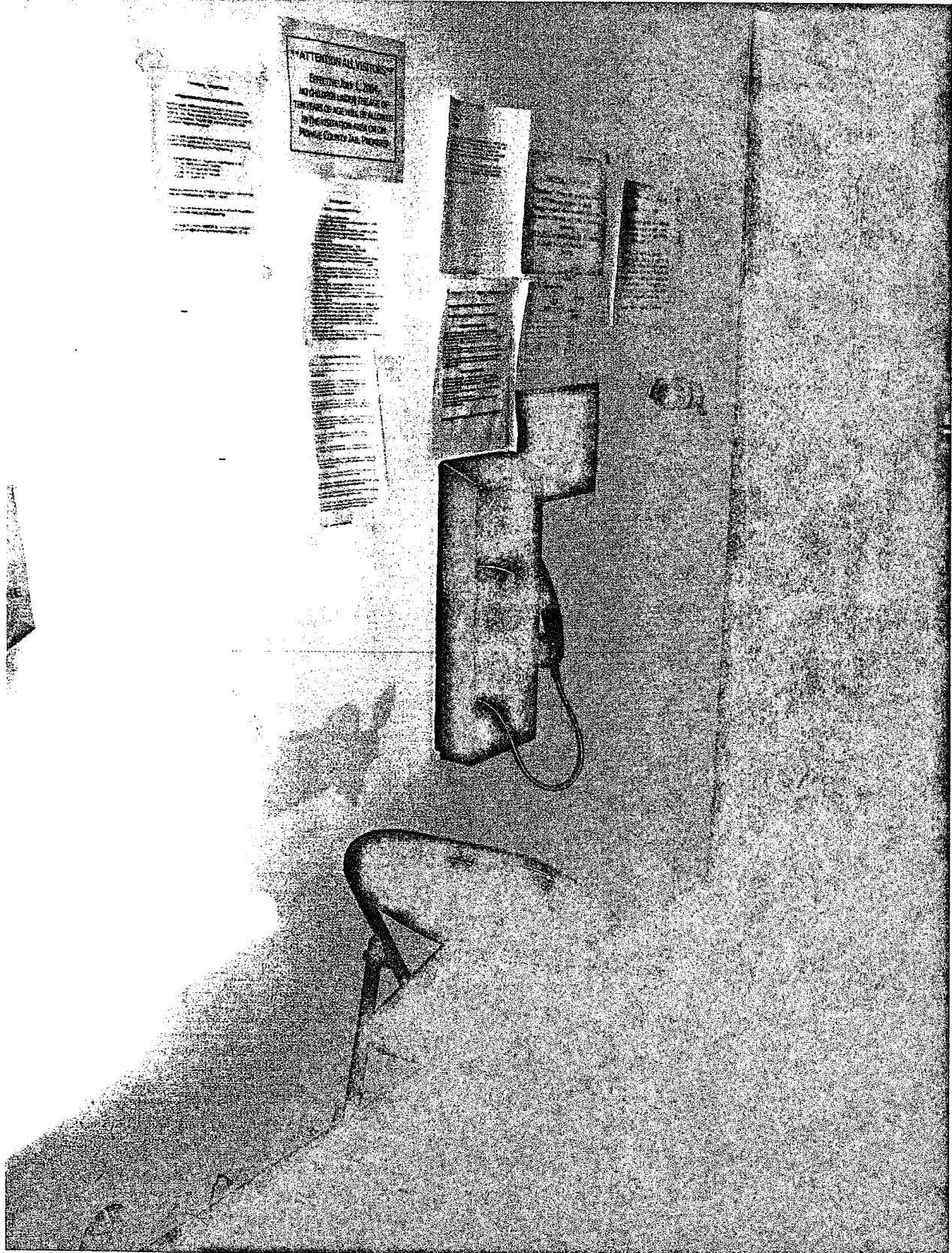


Photo 6



MOHAVE COUNTY, ARIZONA
CRIMINAL JUSTICE NEEDS ASSESSMENT AND PRE-DESIGN STUDY

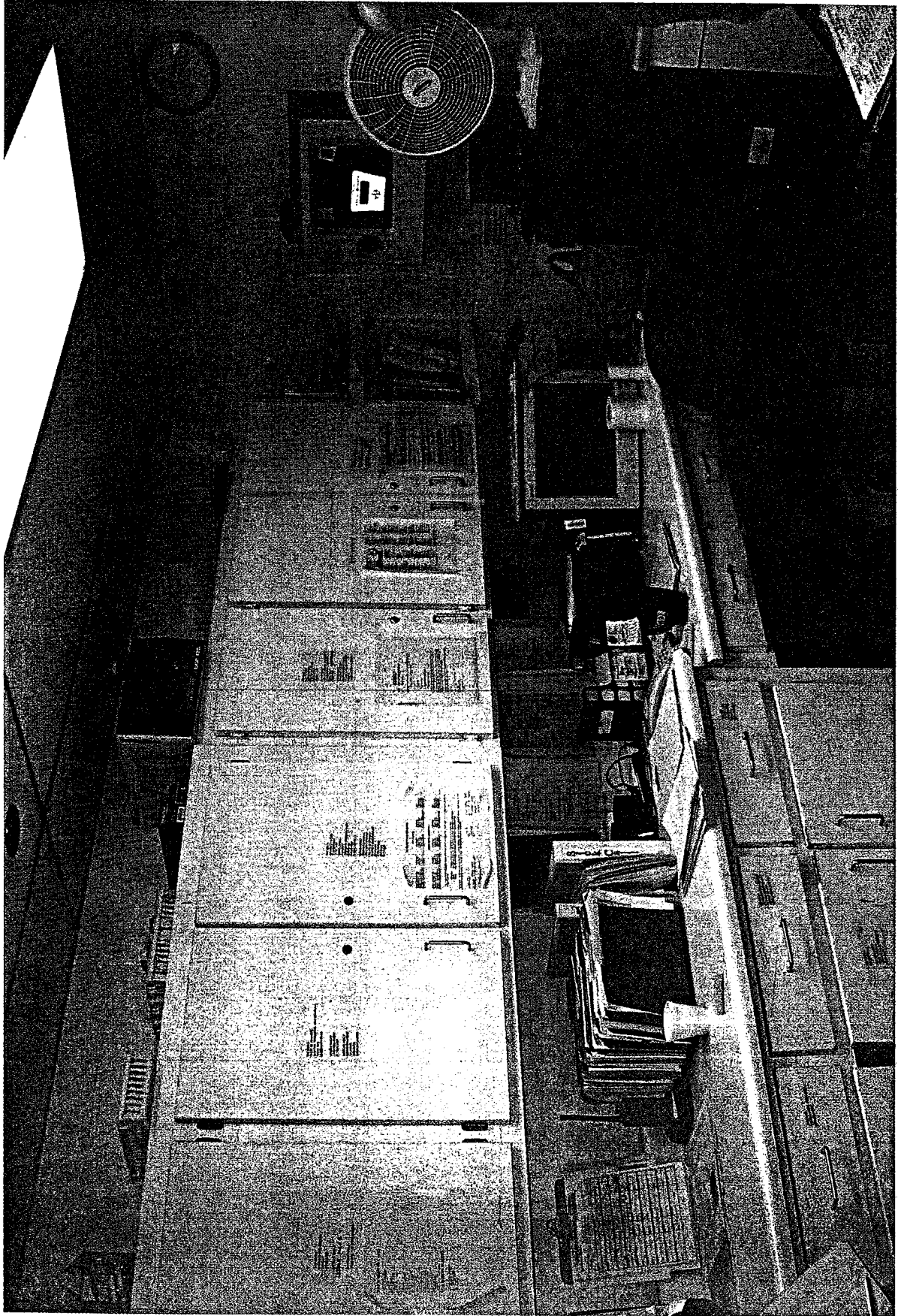


Photo 8

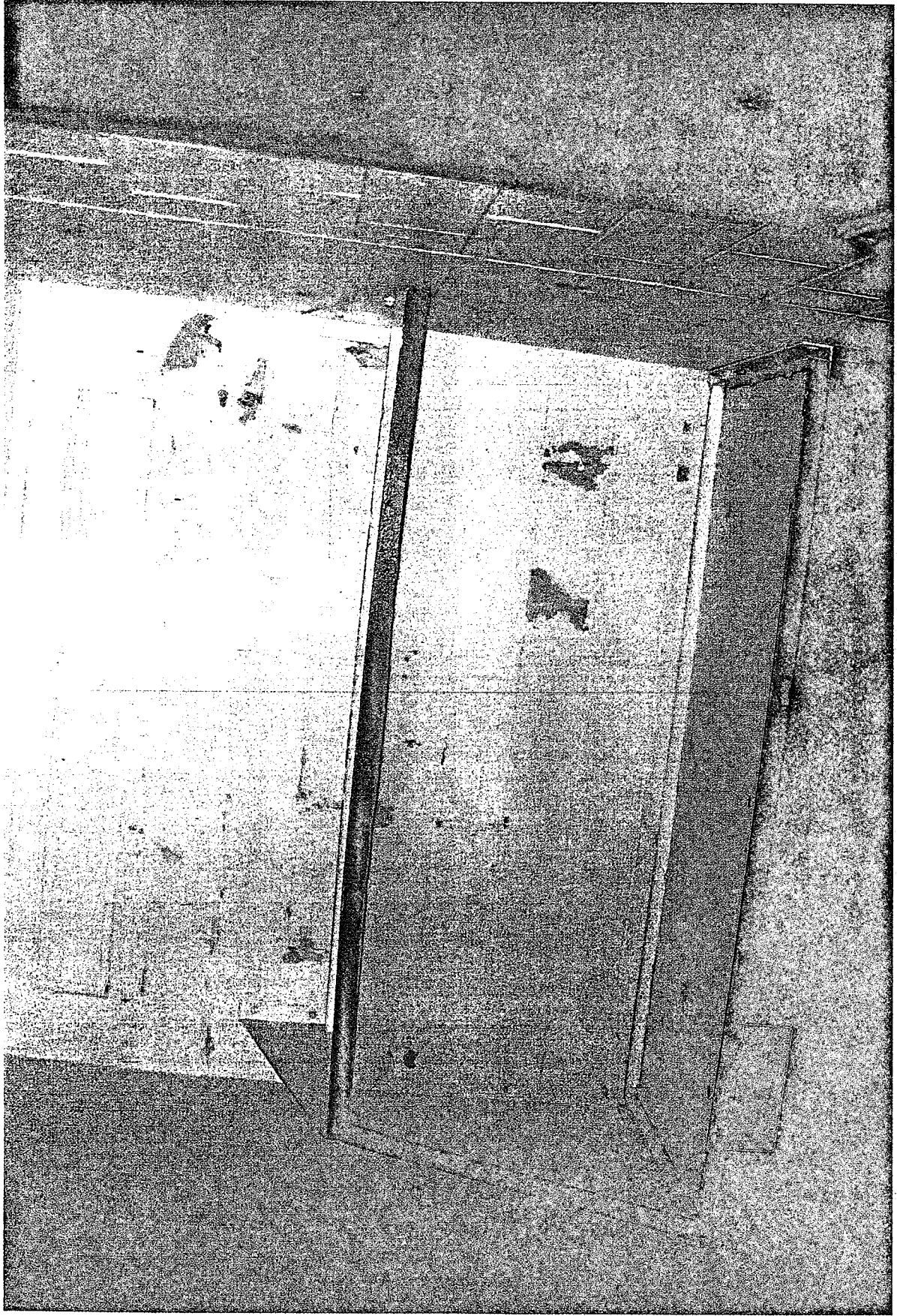


Photo 9