

FINAL REPORT  
APPENDIX C  
PHOTOGRAPHS

MOHAVE COUNTY, ARIZONA  
CRIMINAL JUSTICE NEEDS ASSESSMENT AND PRE-DESIGN STUDY

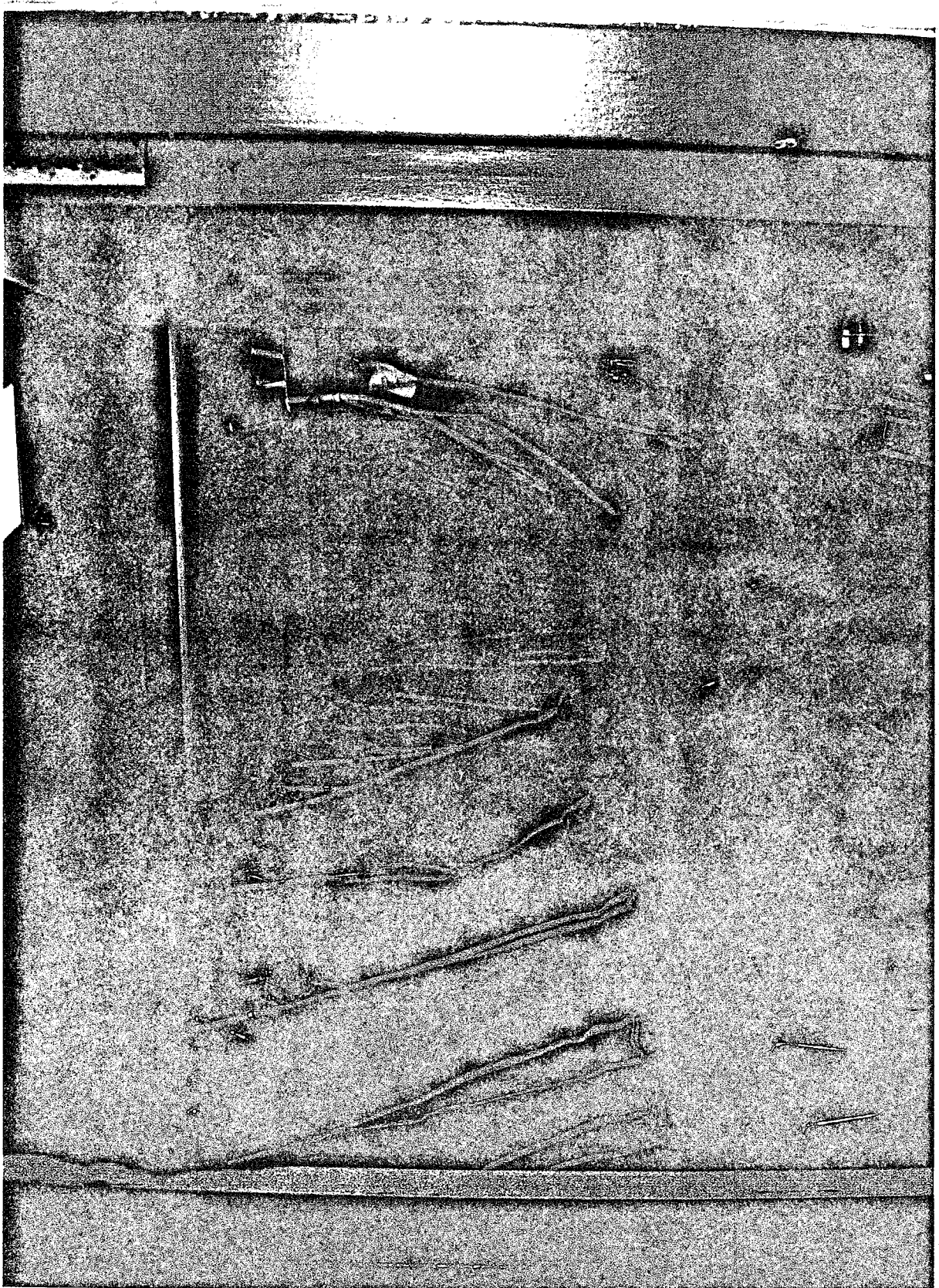


Photo 10

RNL Design in association with Chinn Planning, Inc./Craig Boersema  
May 15, 2006



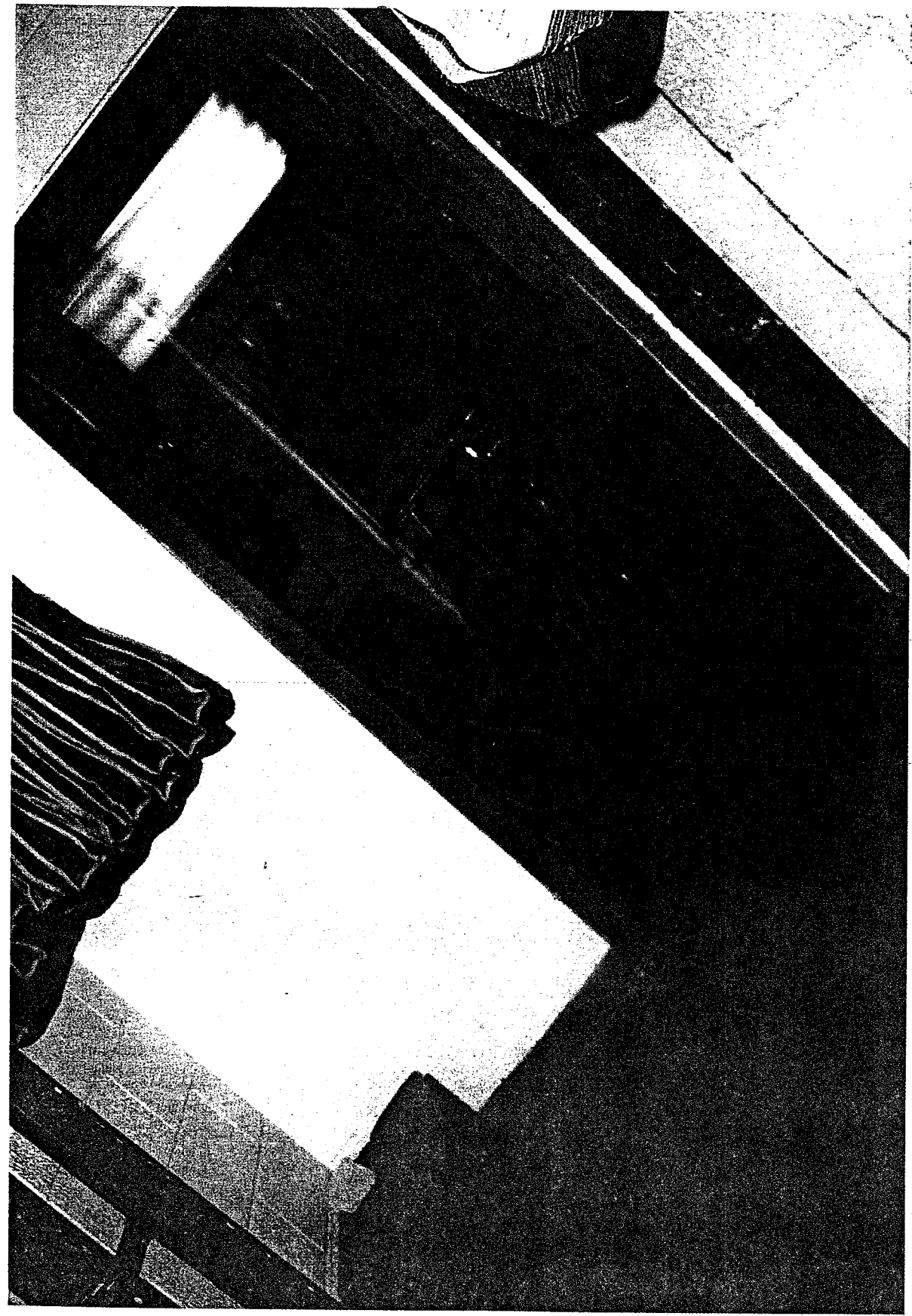
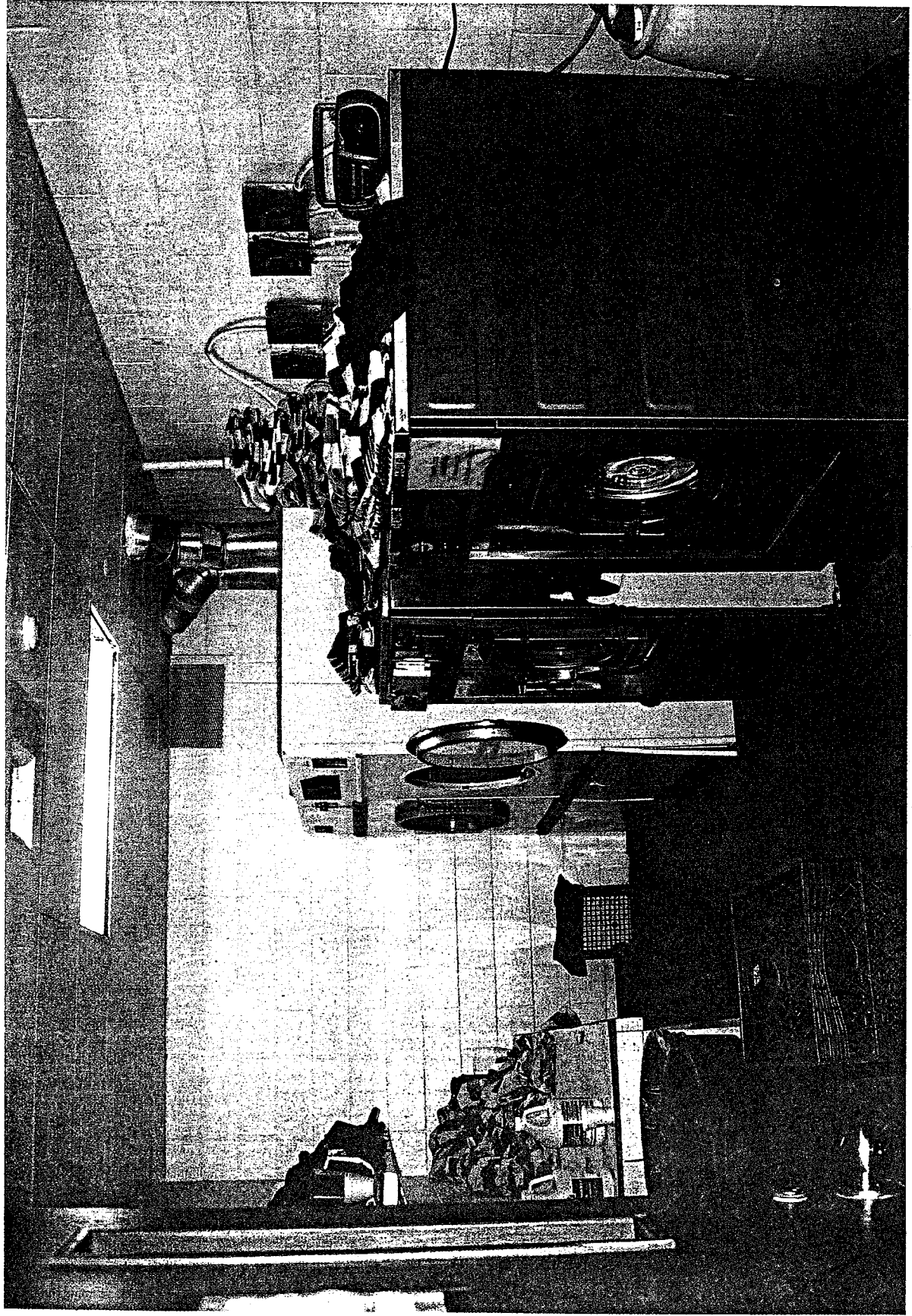
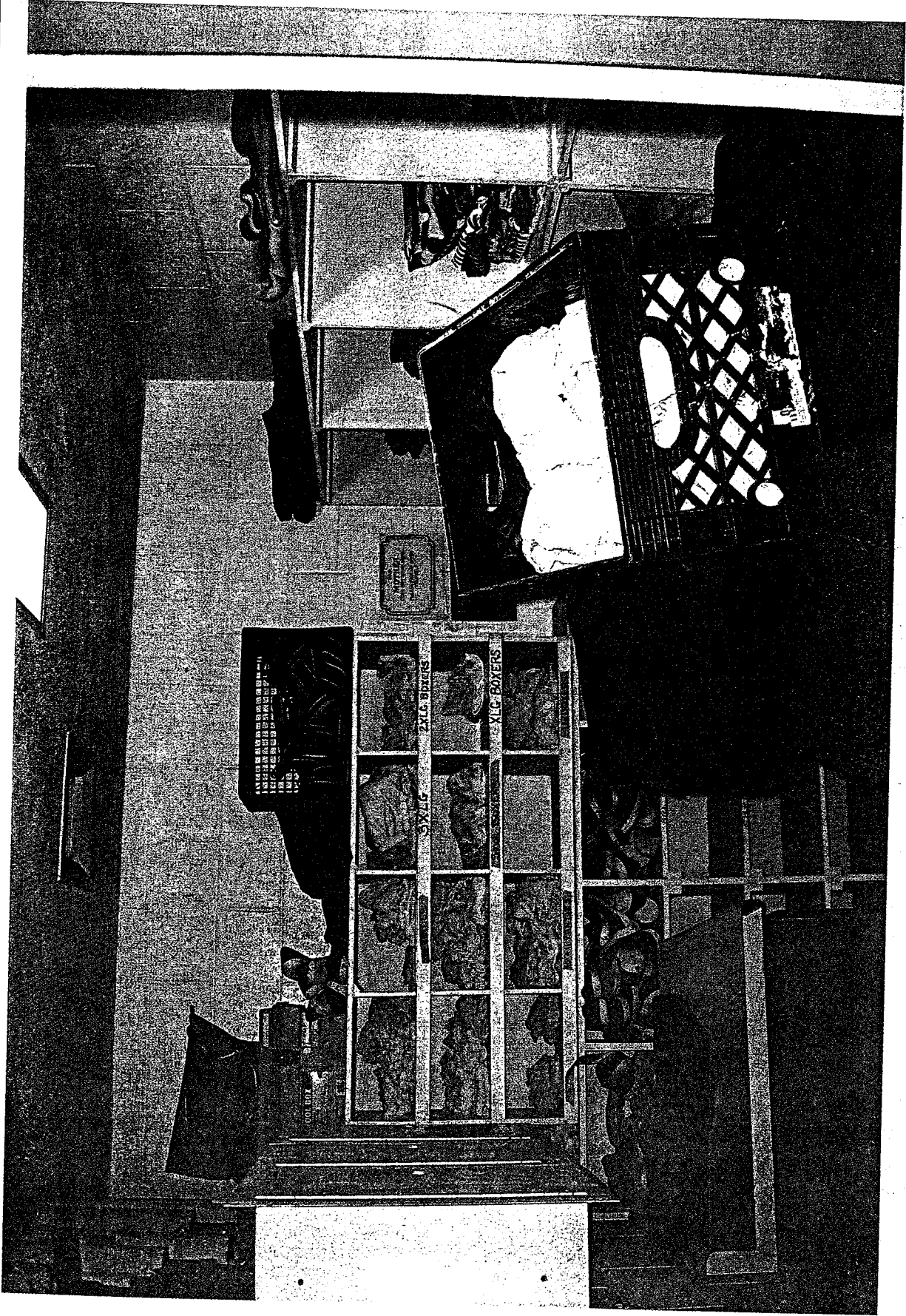


Photo 11

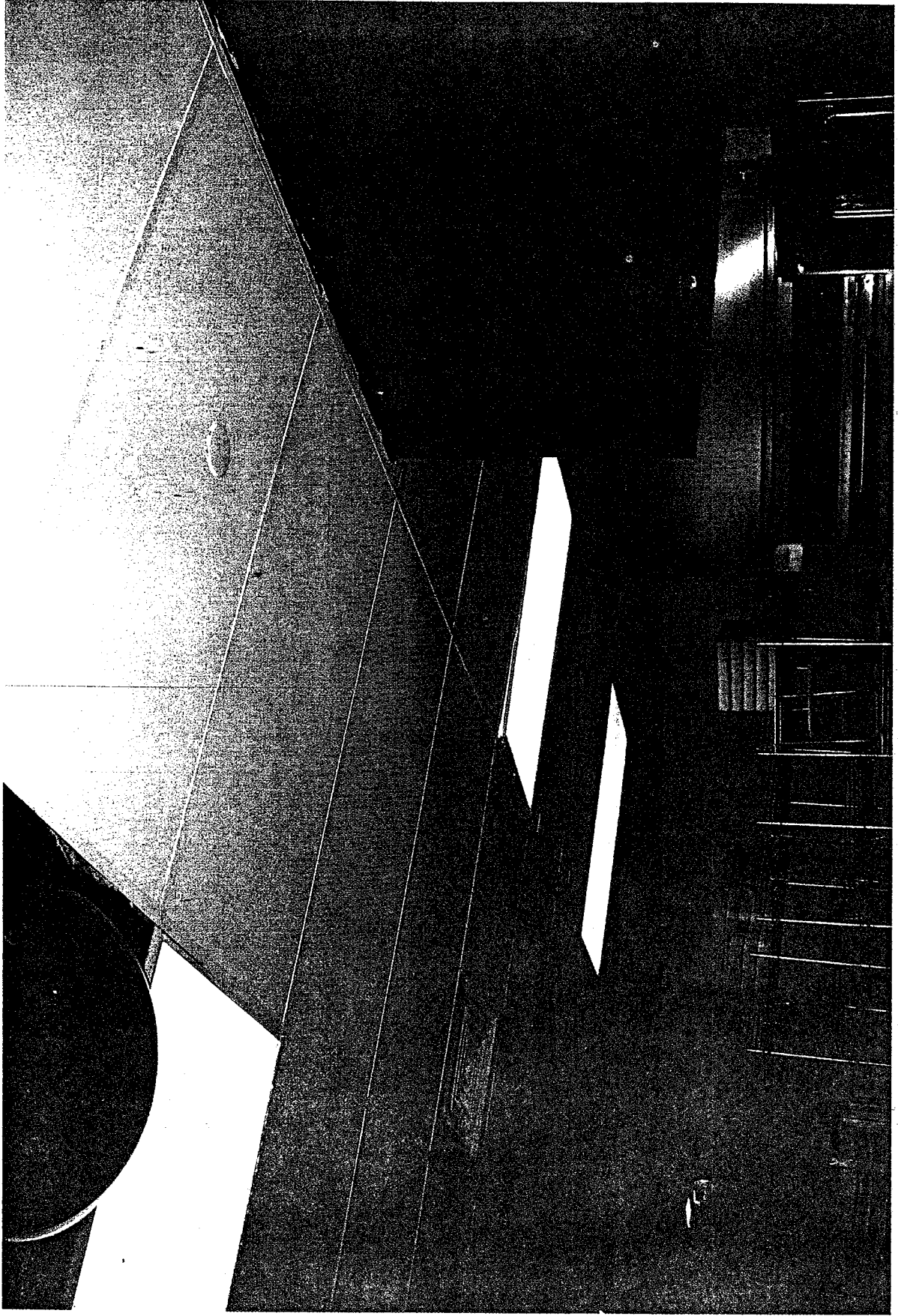
MOHAVE COUNTY, ARIZONA  
CRIMINAL JUSTICE NEEDS ASSESSMENT AND PRE-DESIGN STUDY



RNL Design in association with Chinn Planning, Inc./Craig Boersema  
May 15, 2006

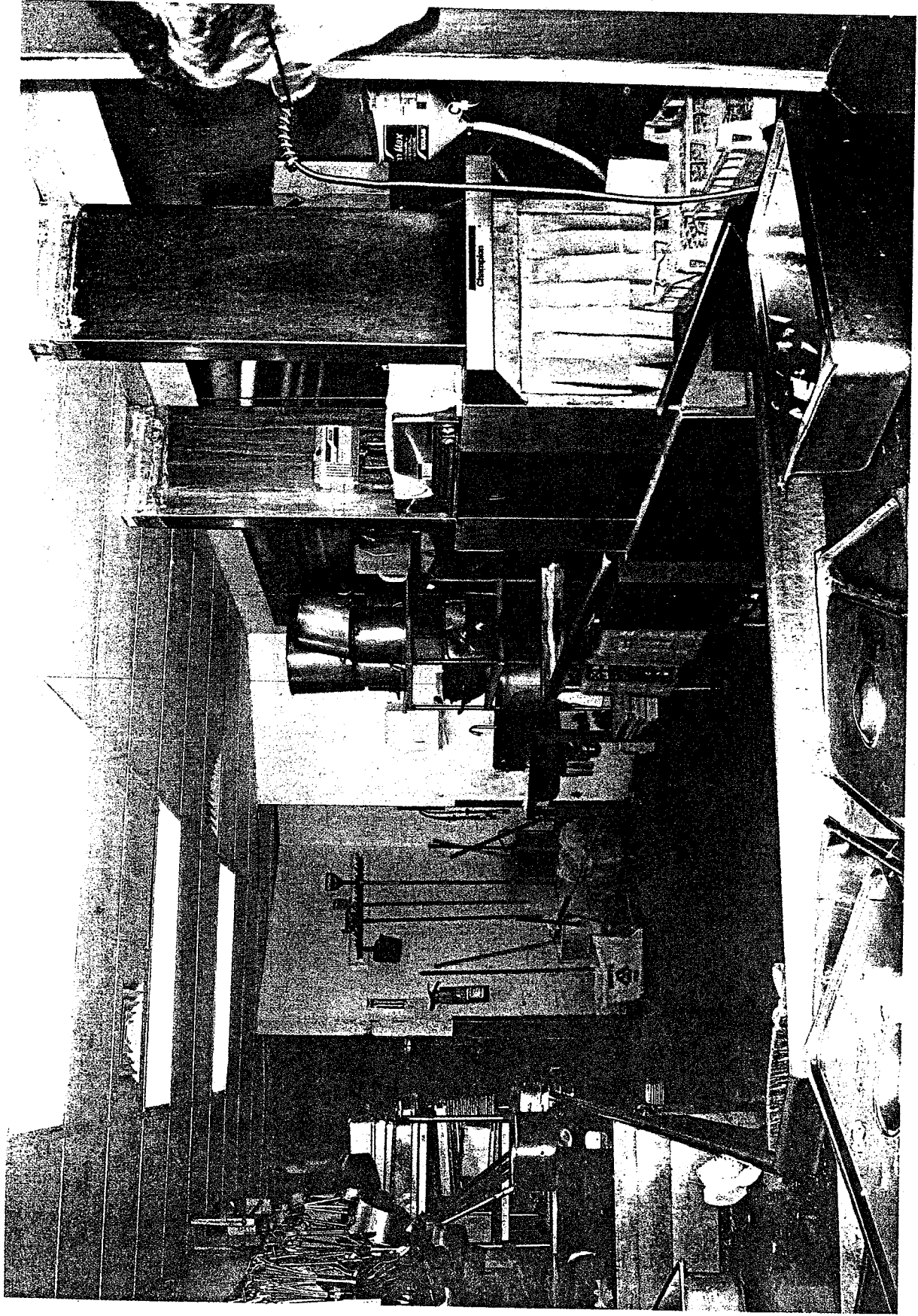


RNL Design in association with Chinn Planning, Inc./Craig Boersema  
May 15, 2006





MOHAVE COUNTY, ARIZONA  
CRIMINAL JUSTICE NEEDS ASSESSMENT AND PRE-DESIGN STUDY



RNL Design in association with Chinn Planning, Inc./Craig Boersema  
May 15, 2006

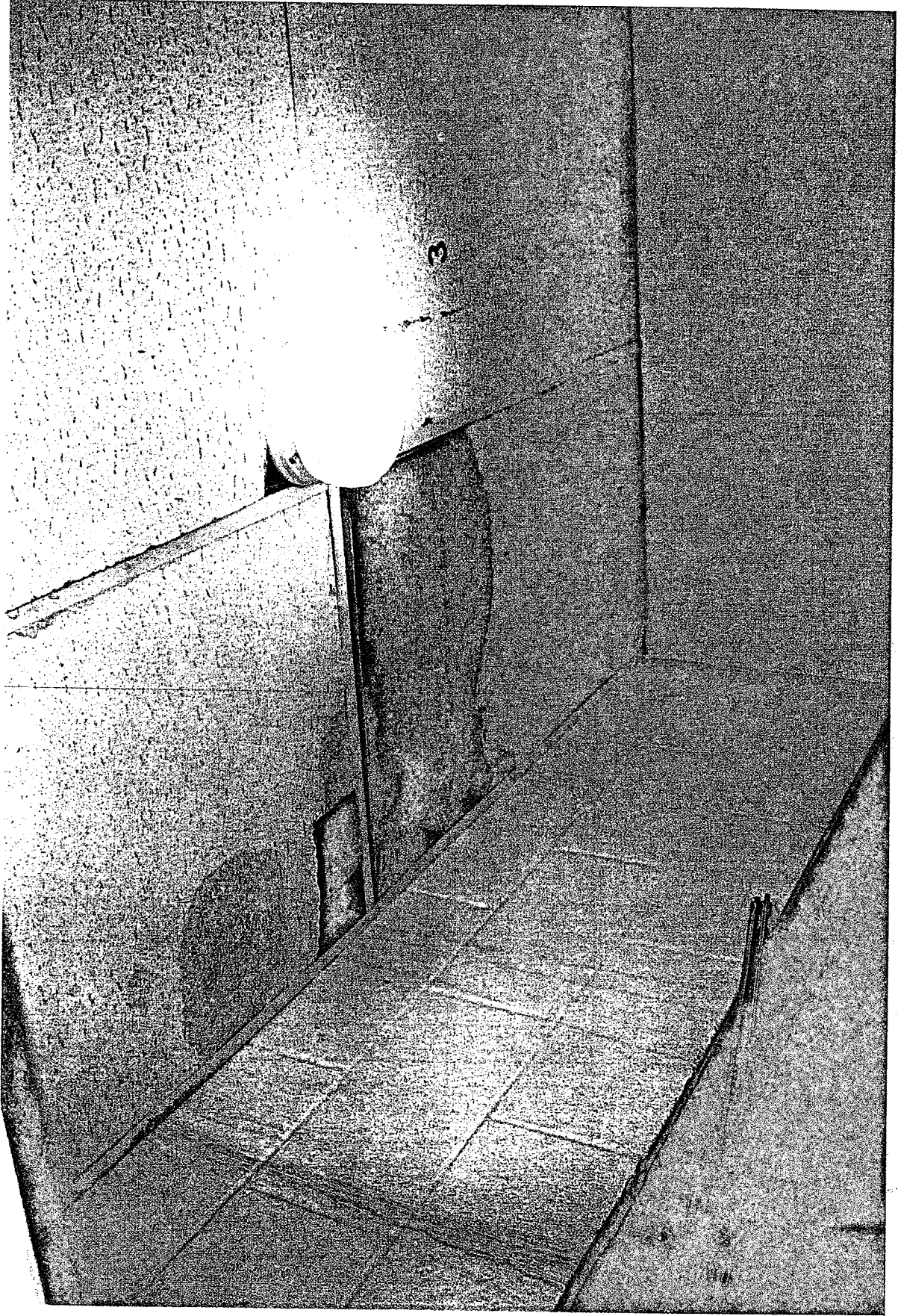


Photo 16