

1
2
3
4
5
6
7
8
9
10
11
12
13
14
15
16
17
18
19
20
21
22
23
24
25
26
27
28

UNITED STATES DISTRICT COURT
EASTERN DISTRICT OF CALIFORNIA

UNITED STATES OF AMERICA,

No. 2:13-cv-848-MCE-CMK

Plaintiff,

v.

MATTHEW R. ANCHORDOGUY,
ANCHORDOGUY AND COMPANY
LIMITED PARTNERSHIP, and JOHN
R. BARLOW,

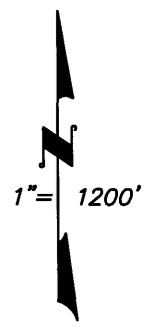
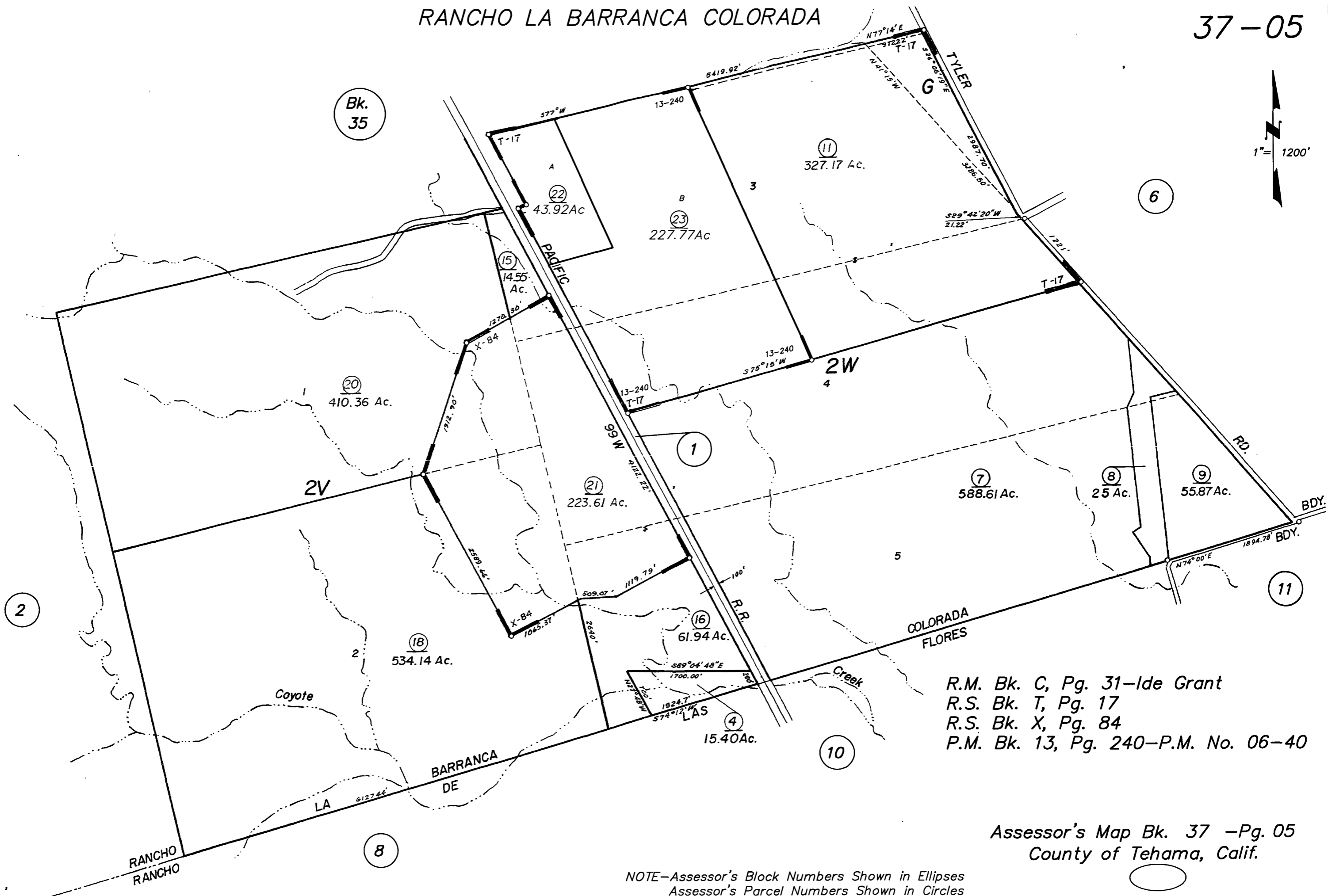
Defendants.

Appendix A:

Tehama County Assessor's Parcel Map for Parcel Numbers 037-050-20-1,
037-050-18-1, 037-050-16-1, 037-050-15-1, and 037-050-04-1, available at
<http://www.co.tehama.ca.us/assessor-info-maps> (last visited June 30, 2014)

RANCHO LA BARRANCA COLORADA

37-05



R.M. Bk. C, Pg. 31-Ide Grant
 R.S. Bk. T, Pg. 17
 R.S. Bk. X, Pg. 84
 P.M. Bk. 13, Pg. 240-P.M. No. 06-40

Assessor's Map Bk. 37 -Pg. 05
 County of Tehama, Calif.

NOTE-Assessor's Block Numbers Shown in Ellipses
 Assessor's Parcel Numbers Shown in Circles