

EXHIBIT C
1 OF 2



US005991791A

United States Patent [19]
Siefert

[11] **Patent Number:** 5,991,791
 [45] **Date of Patent:** Nov. 23, 1999

- [54] **SECURITY ASPECTS OF COMPUTER RESOURCE REPOSITORIES**
- [75] Inventor: **David M. Siefert**, Englewood, Ohio
- [73] Assignee: **NCR Corporation**, Dayton, Ohio
- [21] Appl. No.: **08/798,446**
- [22] Filed: **Jan. 10, 1997**

“Development of the Domain Name Server” by Paul Moskapeters Stanford, California Aug. 16–19, 1988.
 “Experiences Implementing BIND, A Distributed Name Server for the Darpa Internet” by James M. Bloom 1986, Summer Conference.

Primary Examiner—Majid A. Banankhah
Attorney, Agent, or Firm—Gregory A. Wette; George H. Gates

Related U.S. Application Data

- [63] Continuation of application No. 08/217,067, Mar. 24, 1994, abandoned.
- [51] **Int. Cl.⁶** **G06F 9/00**
- [52] **U.S. Cl.** **709/100; 707/9**
- [58] **Field of Search** **709/100, 101, 709/106, 303; 707/9, 103; 705/27**

[57] **ABSTRACT**

The invention concerns a system for managing resources, which can take the form of (a) computer-compatible information, such as data files and programs, and (b) non-computer-compatible information, such as data contained on microfiche, and (c) physical objects. The resources are located at geographically diverse sites.

[56] **References Cited**

U.S. PATENT DOCUMENTS

| | | | |
|-----------|--------|-----------------|------------|
| 3,787,627 | 1/1974 | Abramson et al. | 179/15 |
| 4,942,540 | 7/1990 | Black et al. | 364/514 |
| 4,992,976 | 2/1991 | Yonekura et al. | 364/900 |
| 5,182,790 | 1/1993 | East et al. | 395/725 |
| 5,187,790 | 2/1993 | East et al. | 395/725 |
| 5,276,901 | 1/1994 | Howell et al. | 395/800 |
| 5,287,537 | 2/1994 | Newmark et al. | 395/800 |
| 5,303,329 | 4/1994 | Khoyi et al. | 395/200 |
| 5,303,379 | 4/1994 | Khoyic et al. | 395/700 |
| 5,321,841 | 6/1994 | East et al. | 395/725 |
| 5,341,477 | 8/1994 | Potkin et al. | 395/DIG. 7 |

The invention contains a descriptive profile for each resource, and allows any user to search all profiles, and to search the profiles according to “fields” (a database term), such as by location of the resources, or by category of the resources. The user can order delivery of a selected resource, and the system causes delivery of the resource to be executed, irrespective of the form (eg, physical object) of the resource.

The invention allows a provider of a new resource to limit access to the resource, by identifying users who are authorized to obtain access to the resource. Non-authorized users cannot obtain access to the profiles of these resources.

OTHER PUBLICATIONS

- “Profile Name Service” by Larry Peterson, ACM Transactions on Computer Systems, vol. 6, No. 4, Nov. 1988.
- “The CSNET Name Server” by Marvin Solomon, University of Wisconsin—Madison 1982.

14 Claims, 101 Drawing Sheets

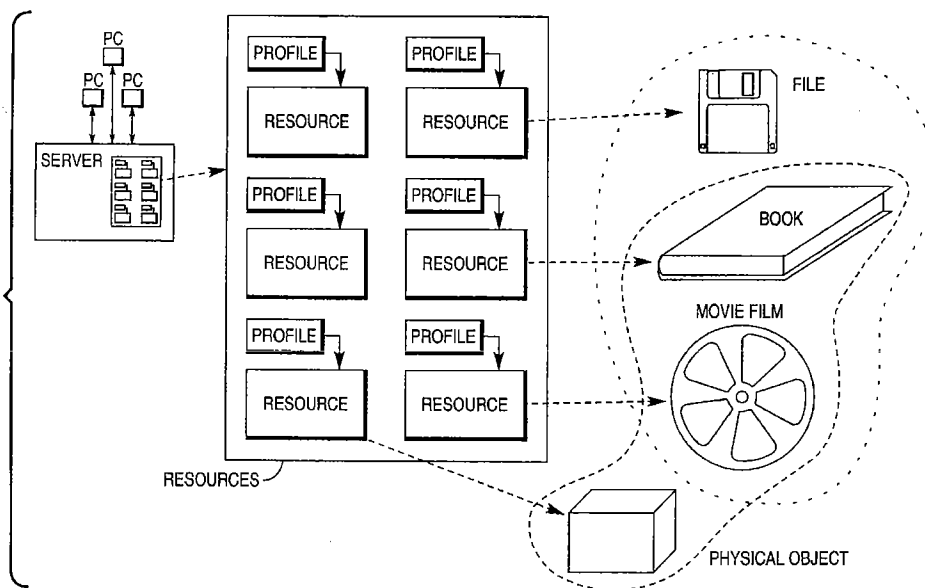
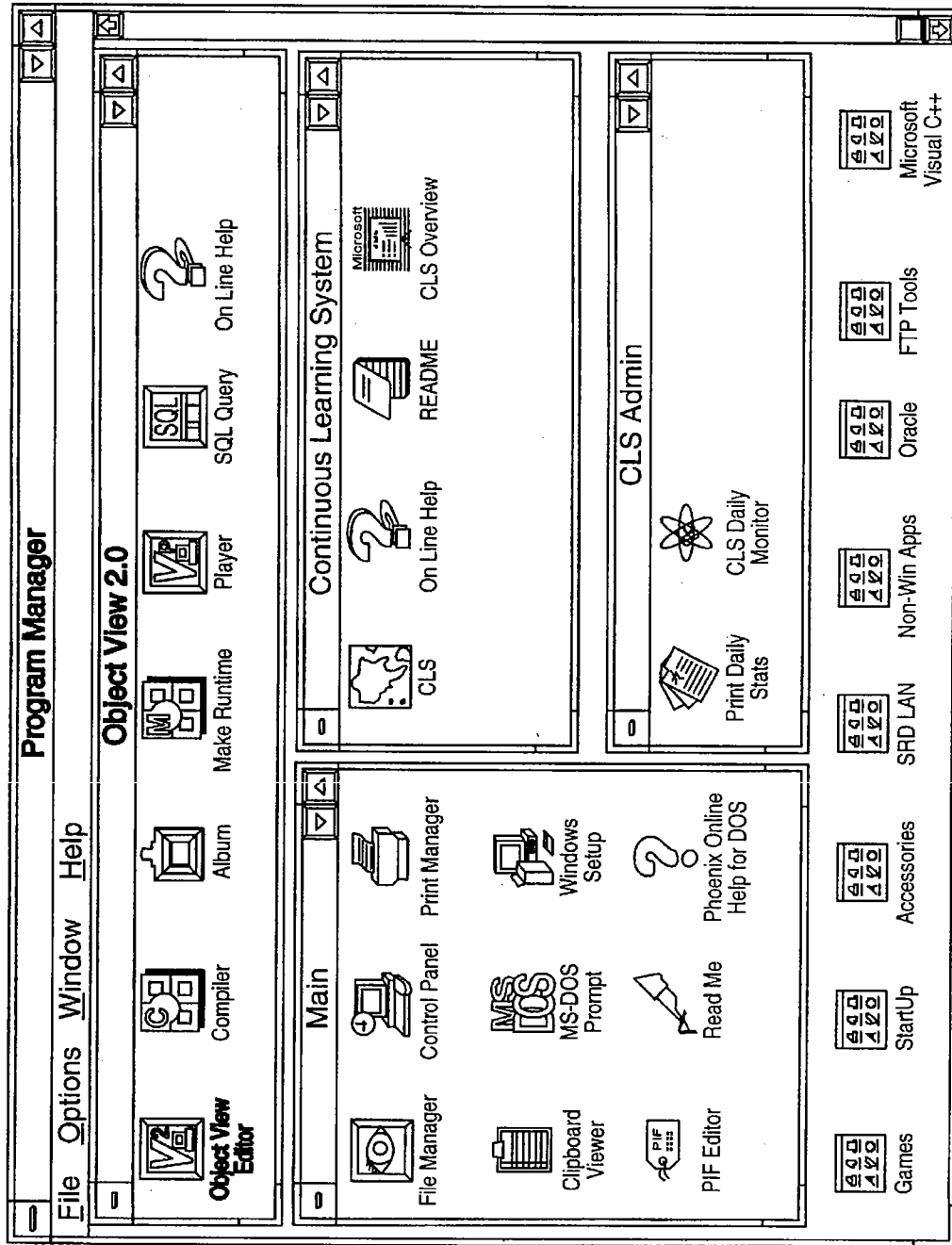


FIG. 1



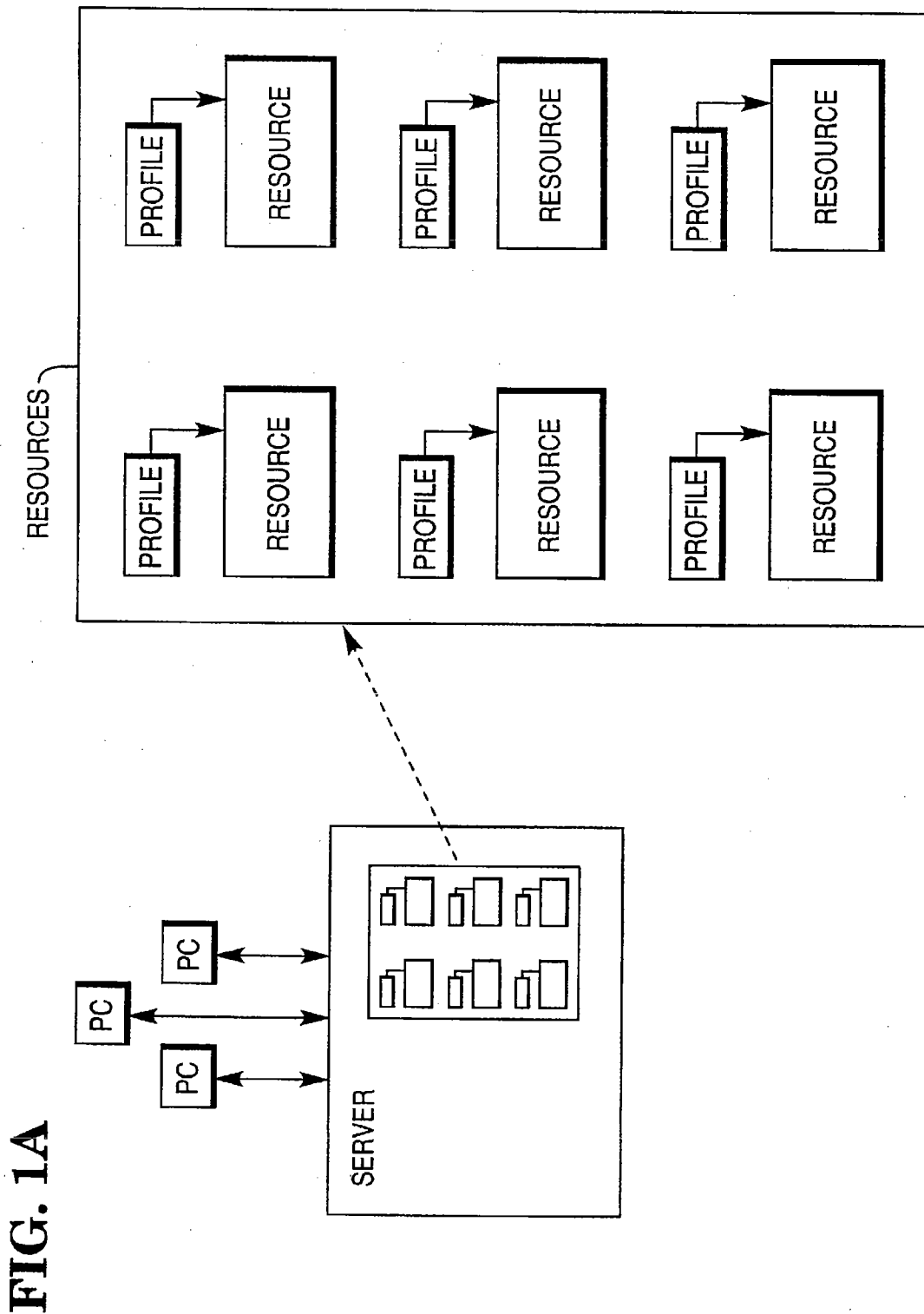
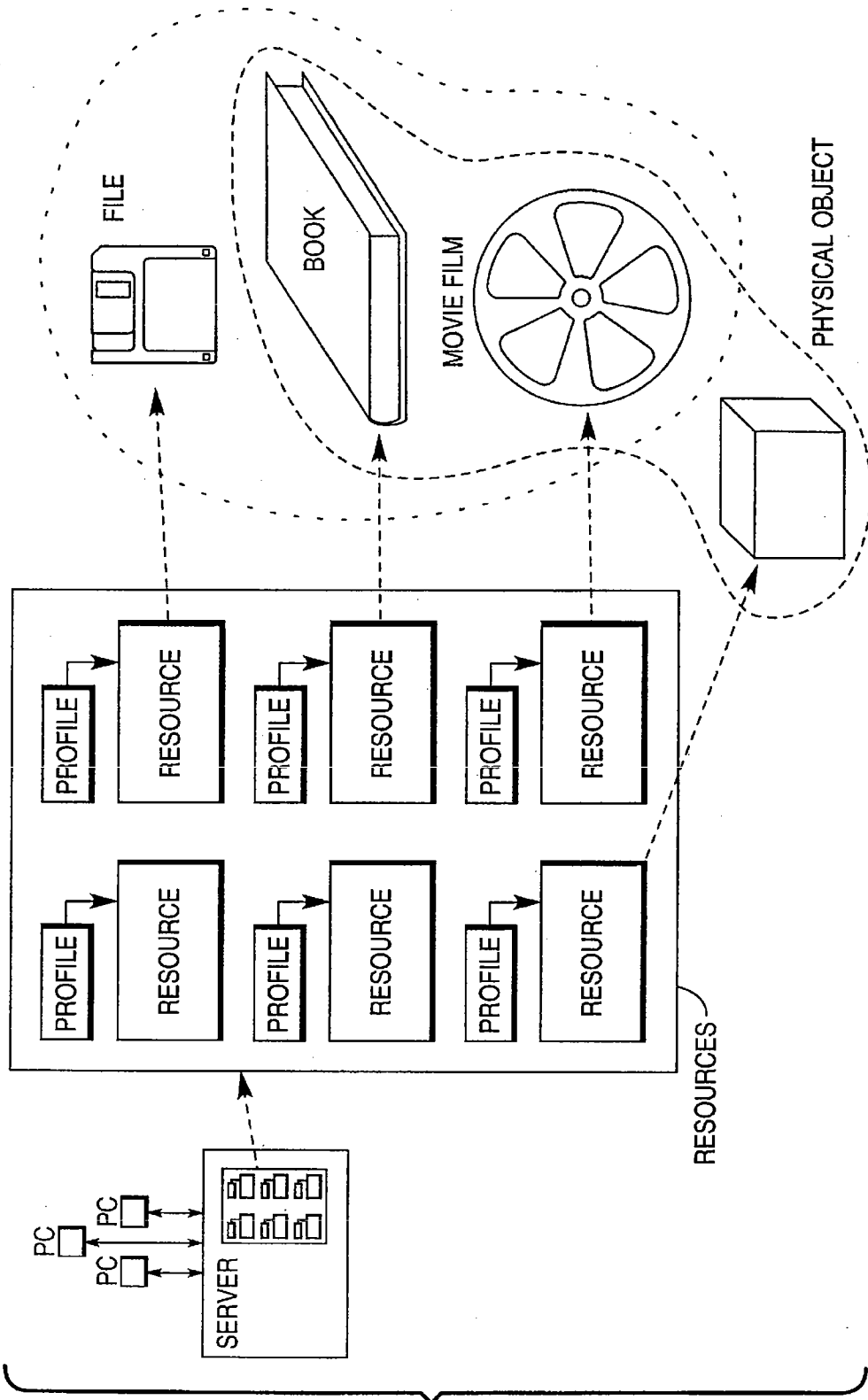


FIG. 1B



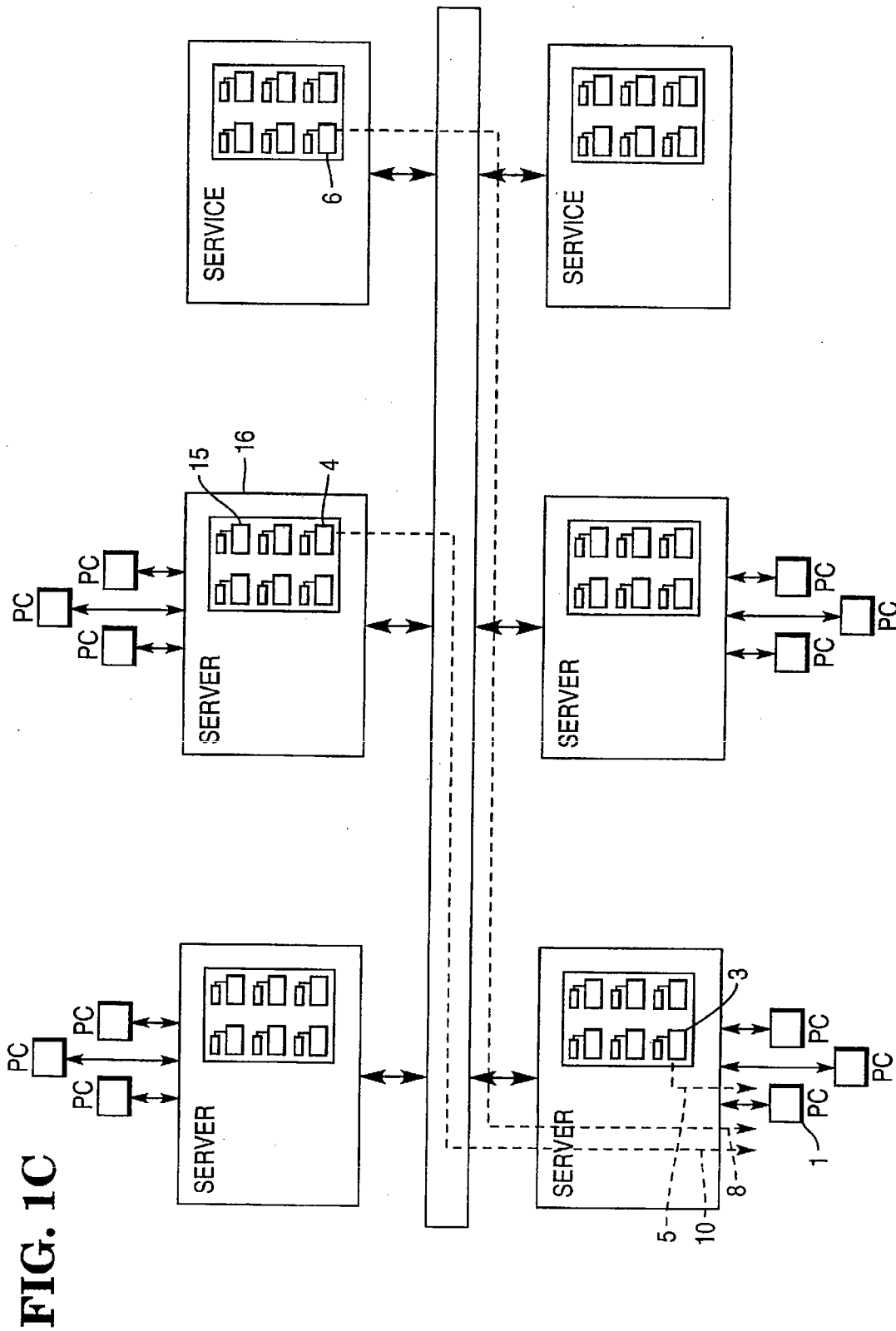
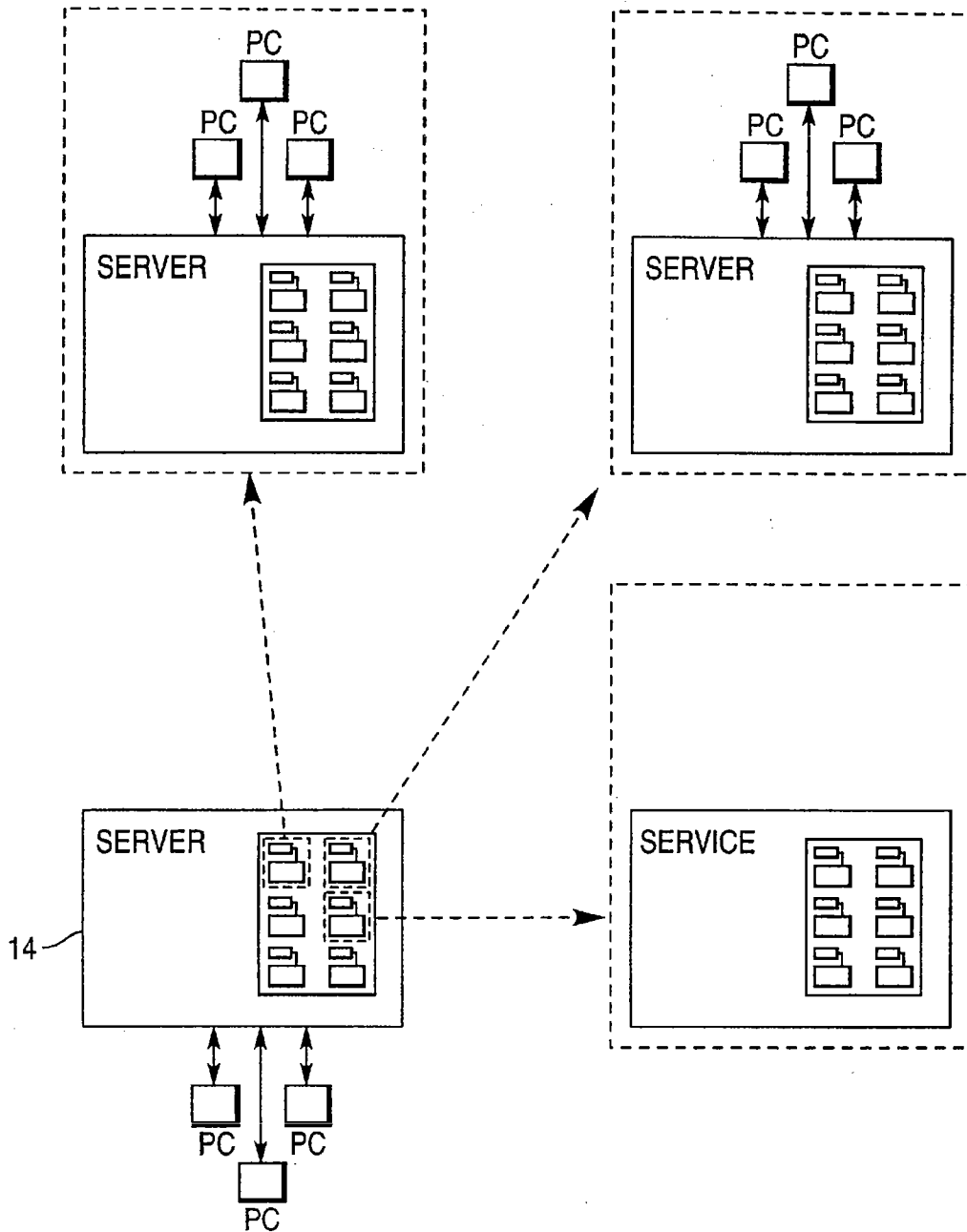


FIG. 1D



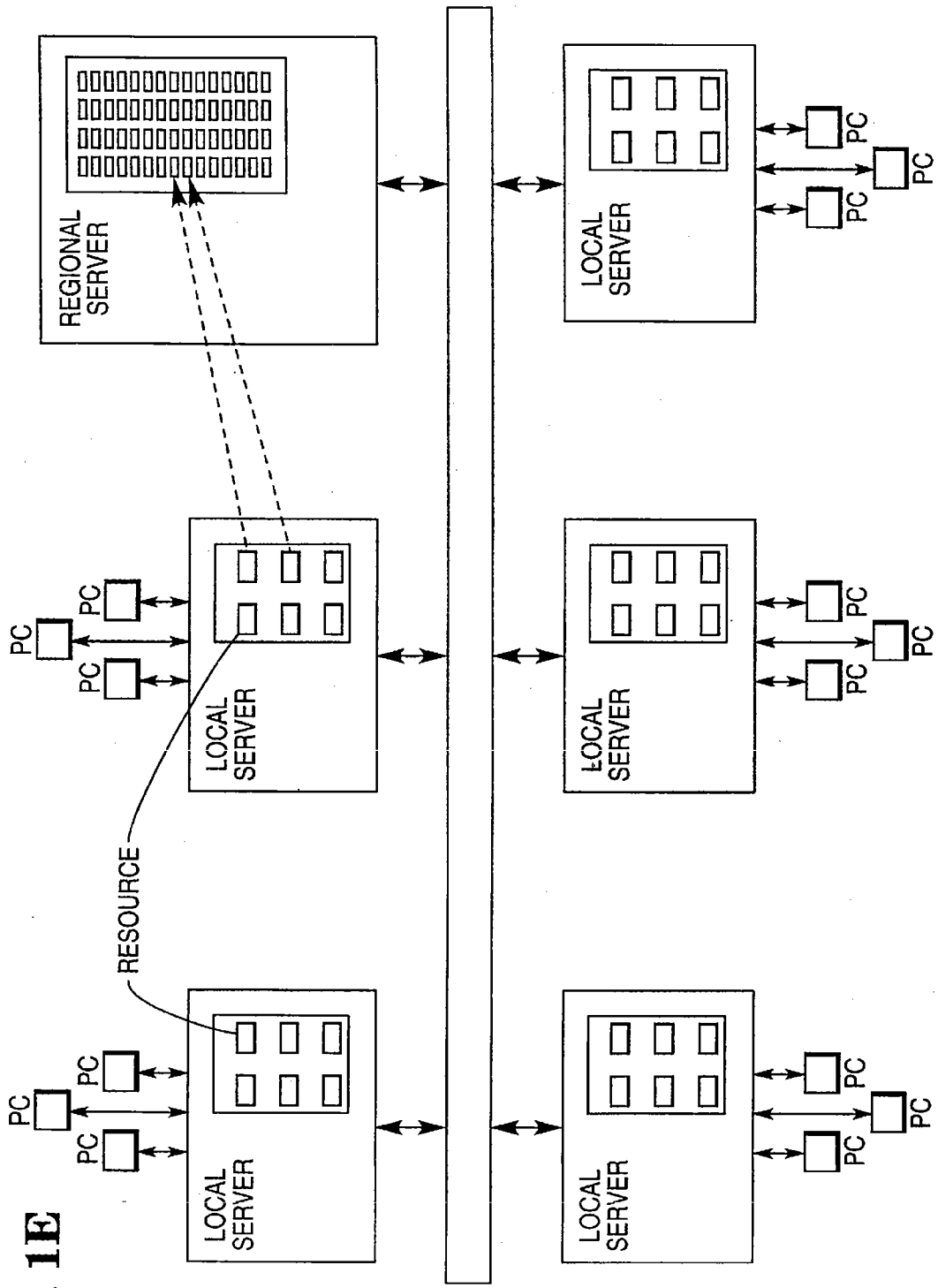


FIG. 1E

FIG. 2

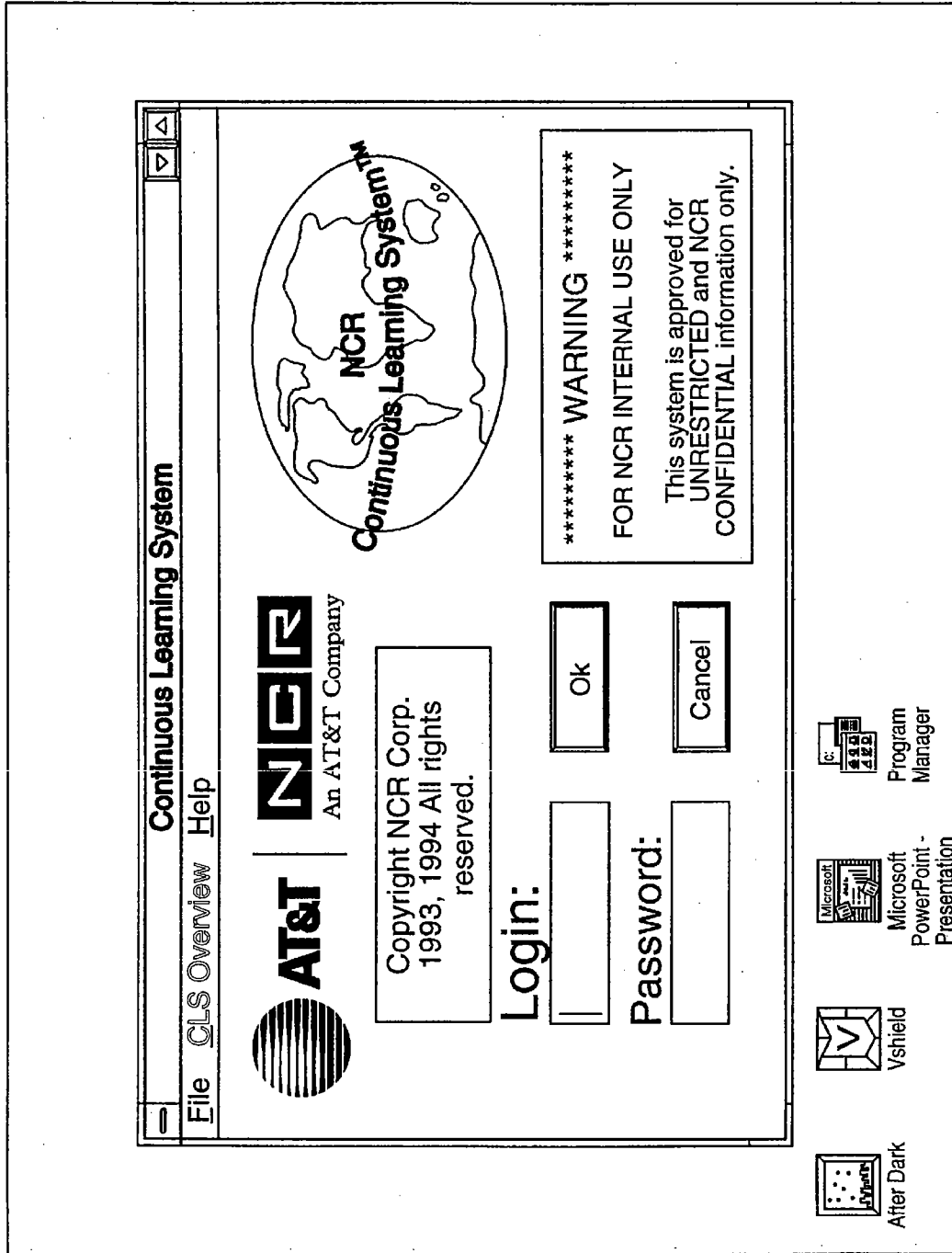


FIG. 3

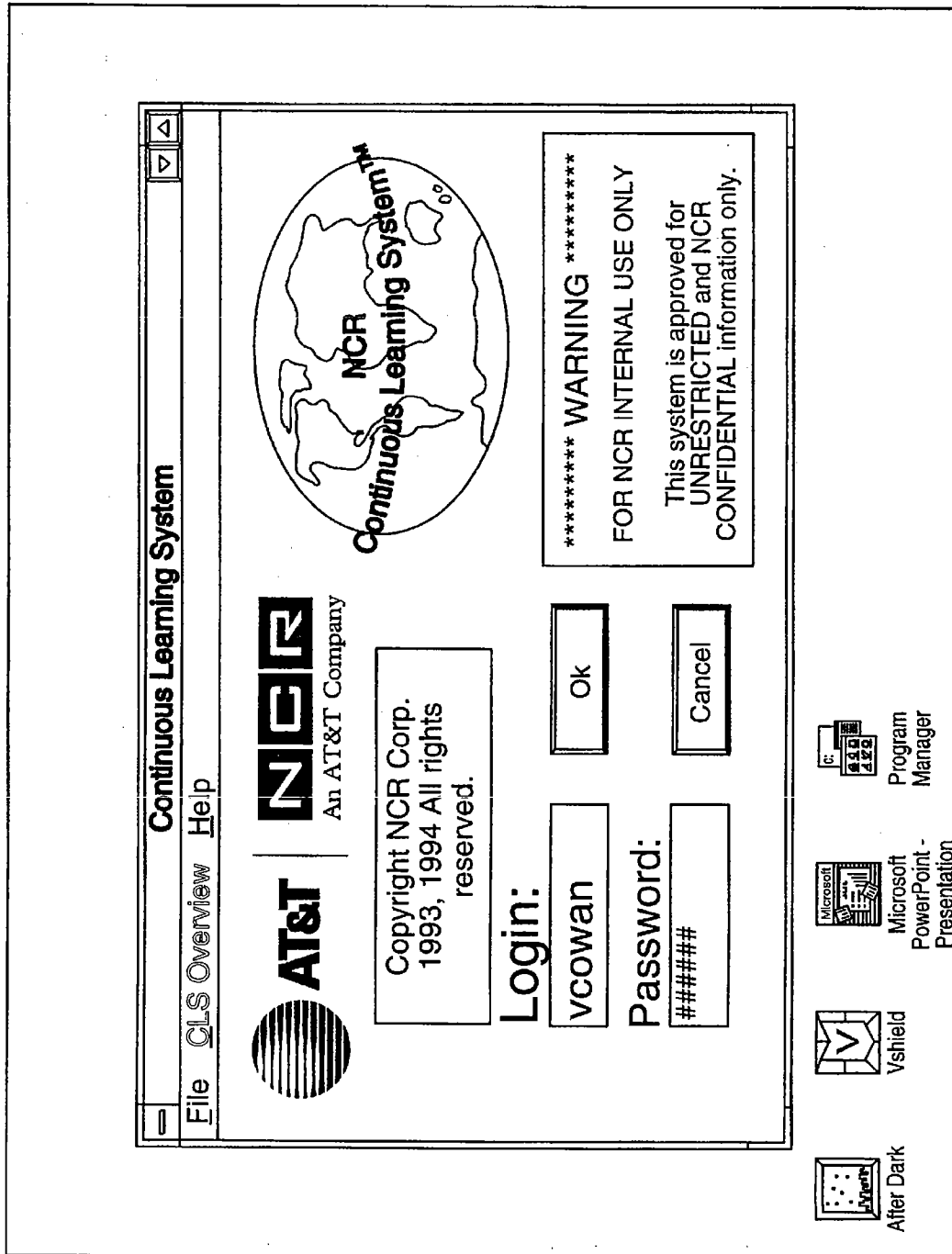


FIG. 4

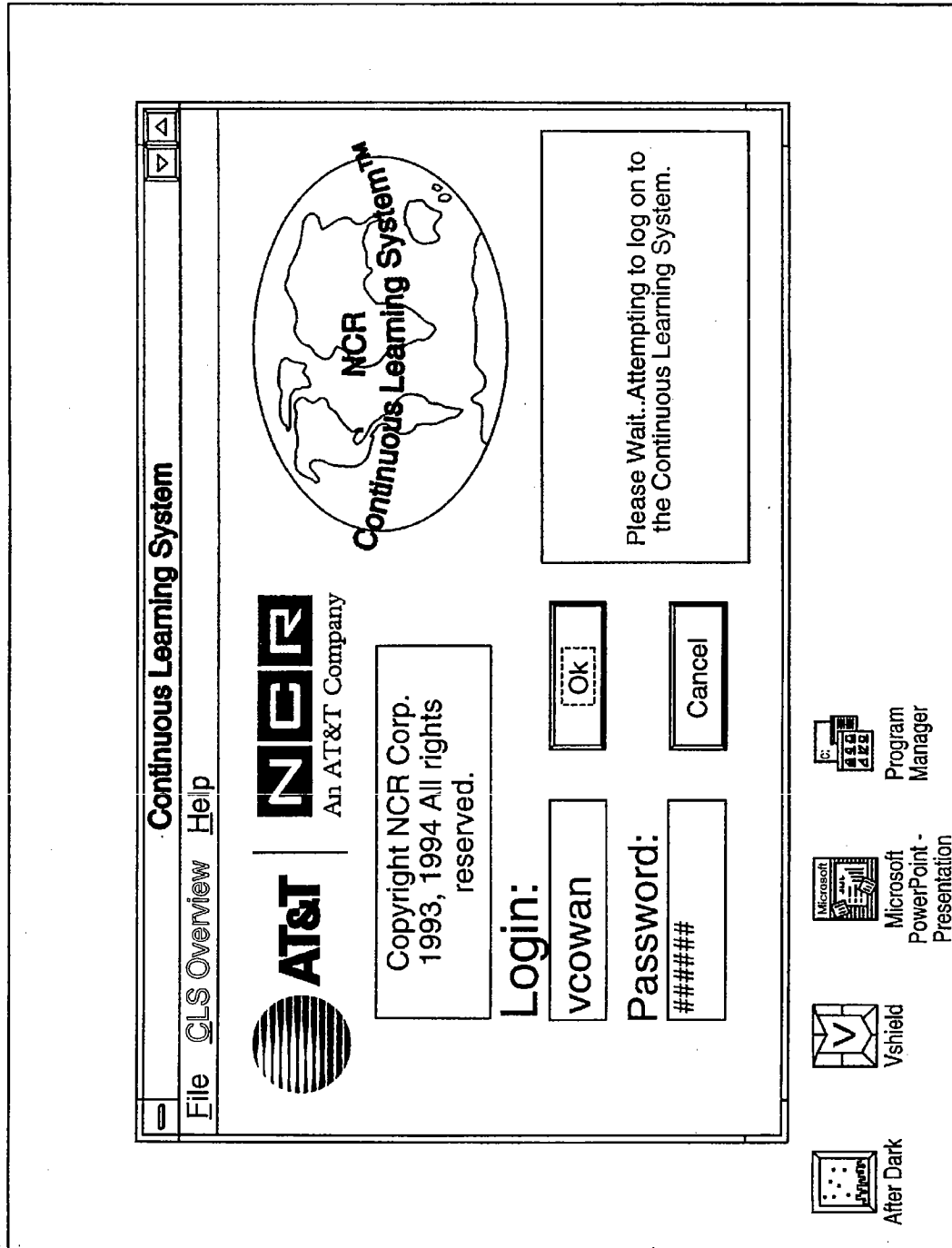


FIG. 5

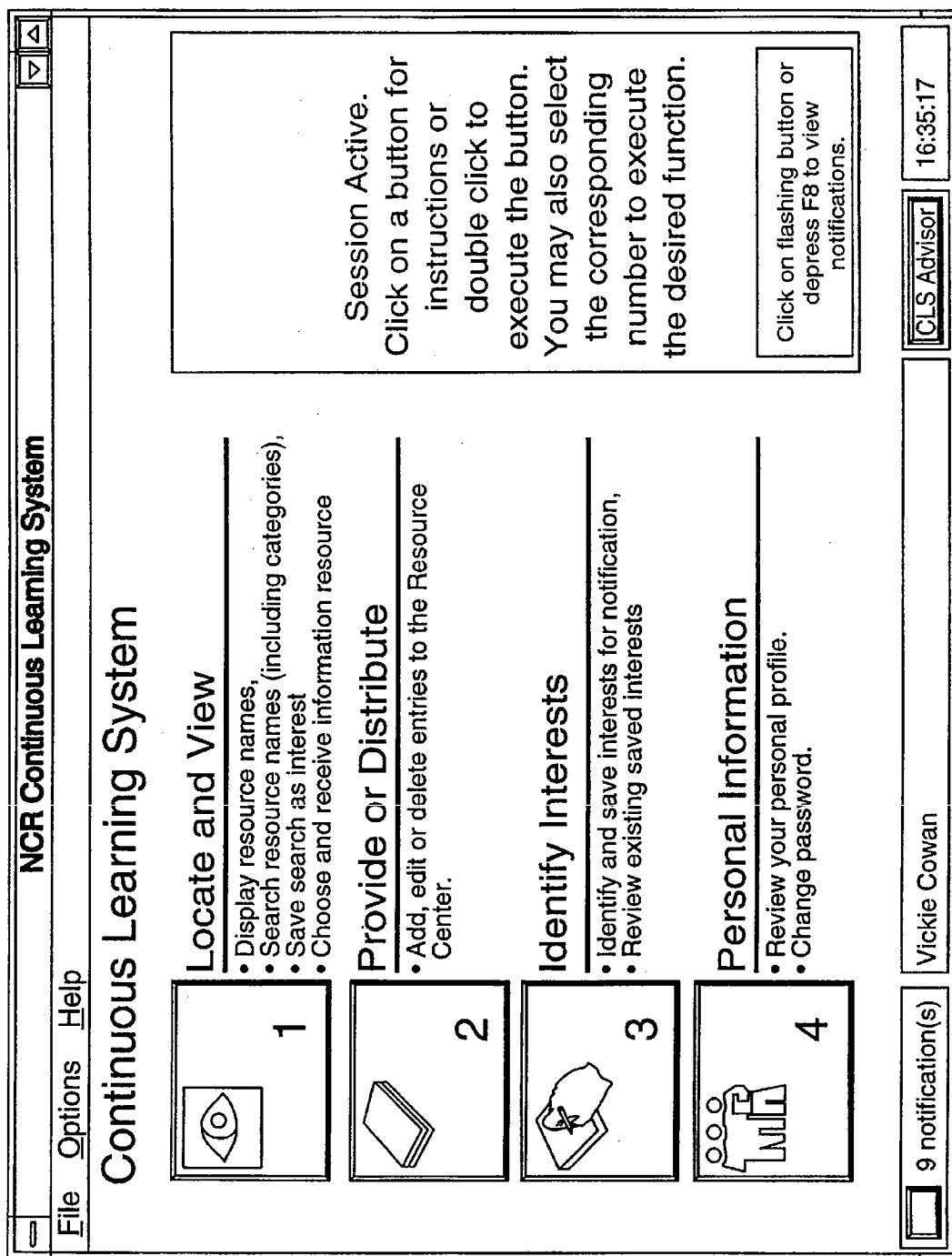


FIG. 6

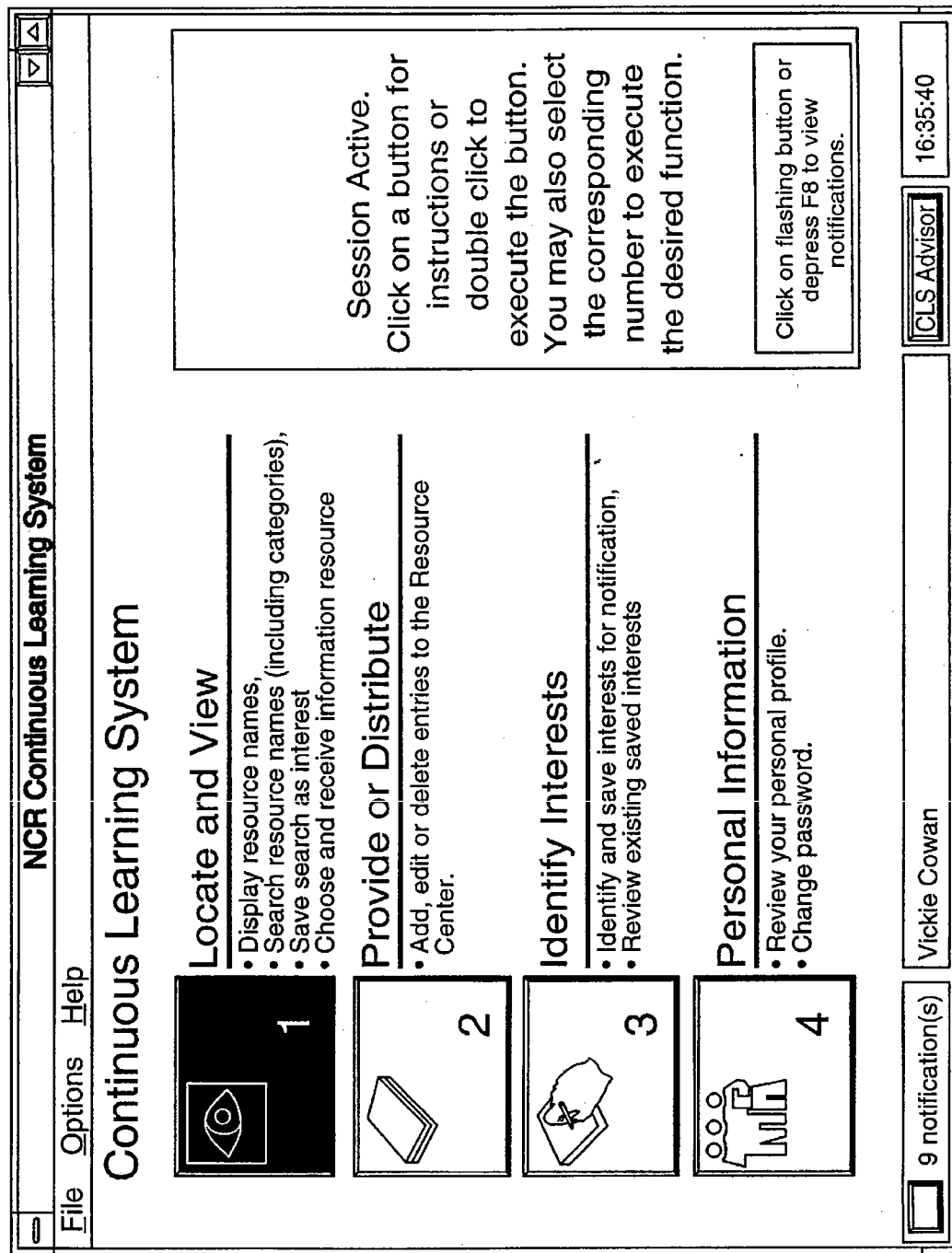


FIG. 7

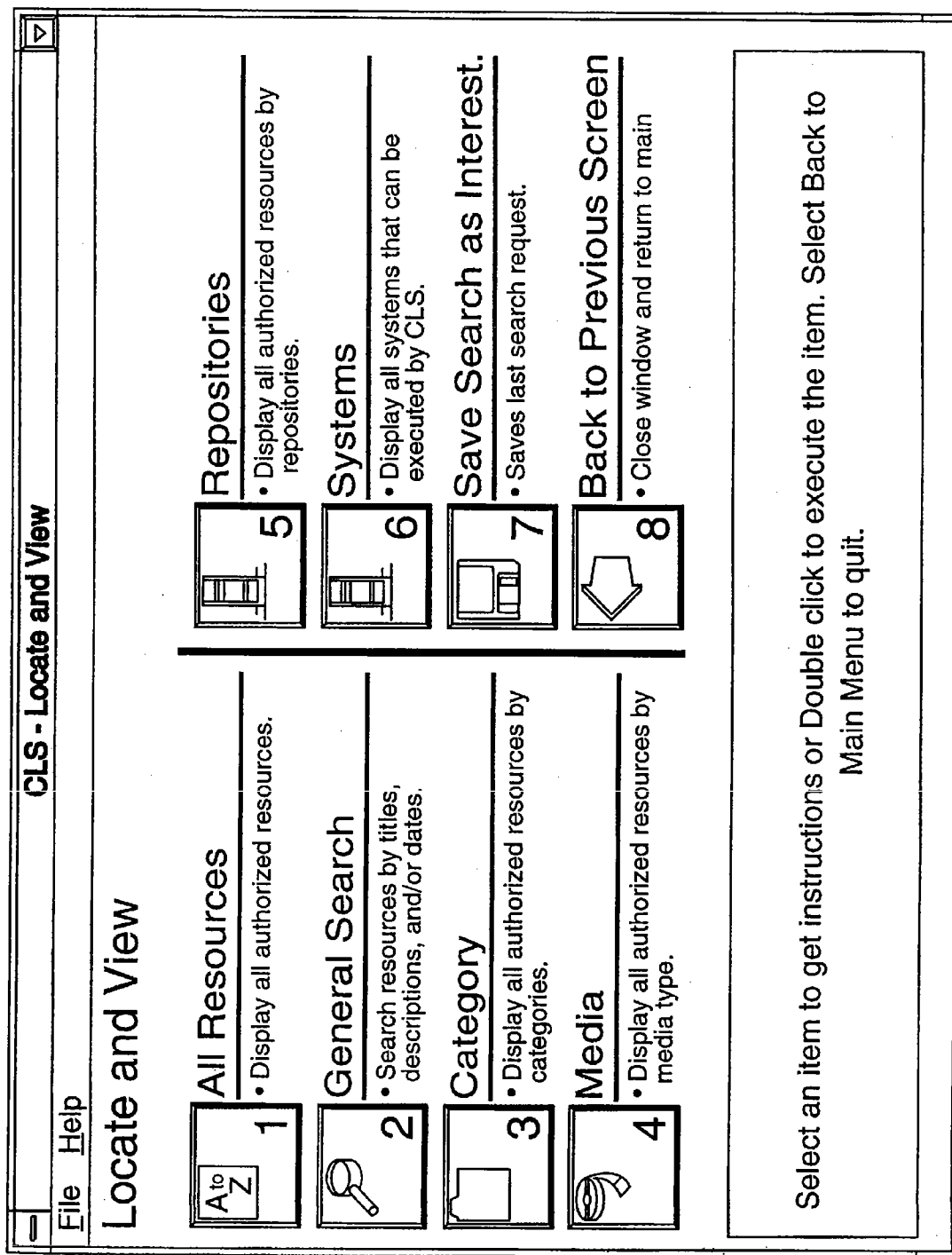
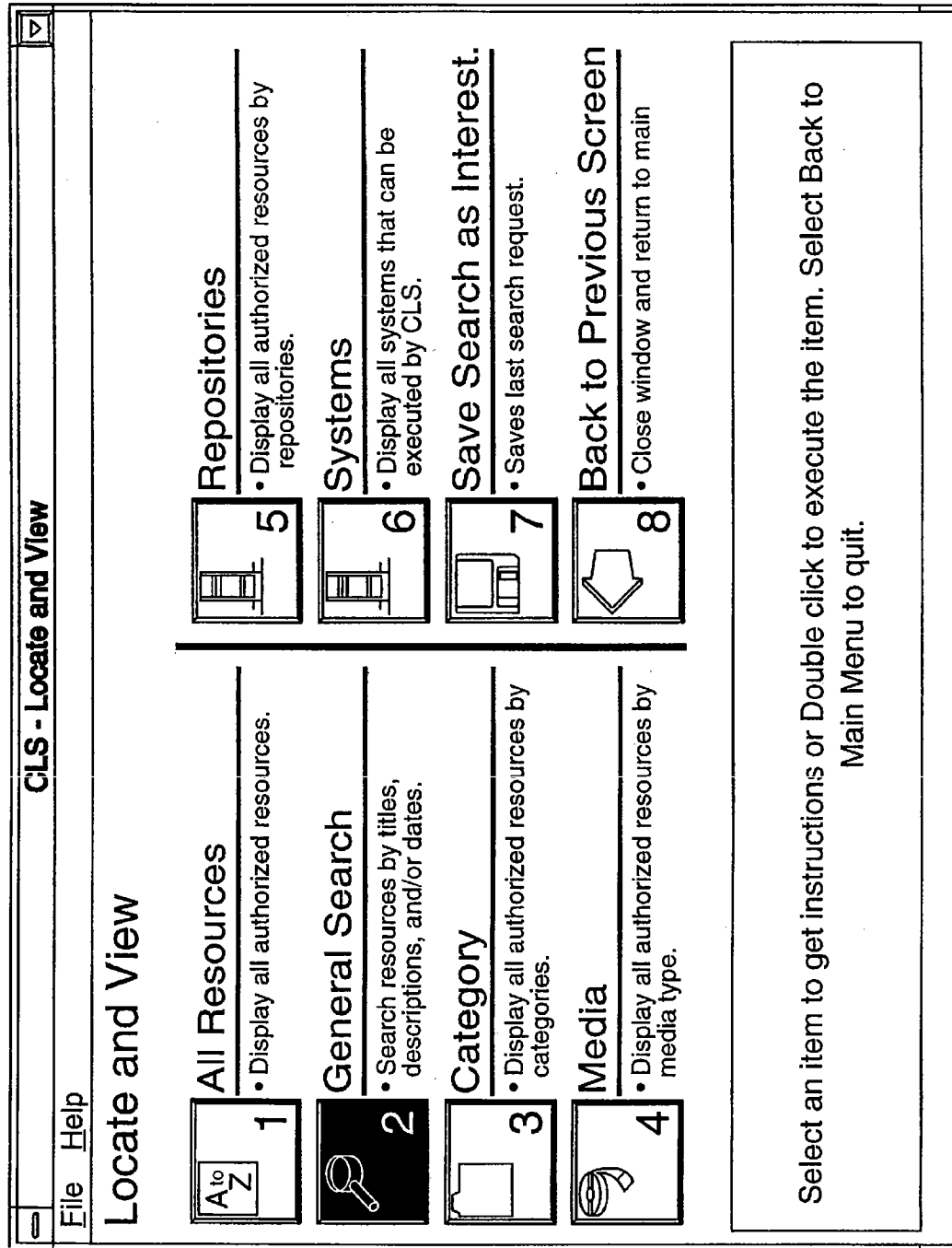


FIG. 8



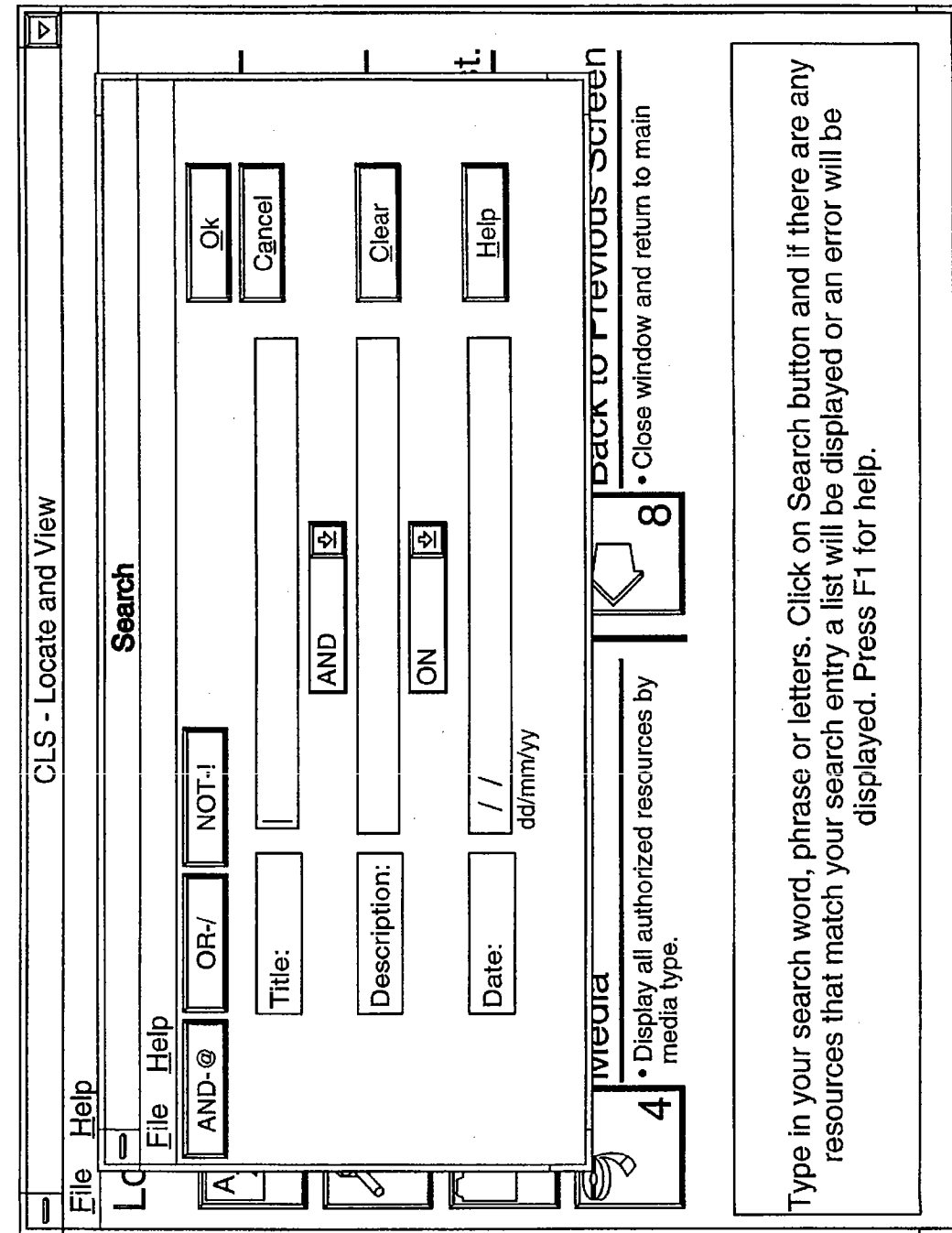


FIG. 9

Type in your search word, phrase or letters. Click on Search button and if there are any resources that match your search entry a list will be displayed or an error will be displayed. Press F1 for help.

FIG. 10

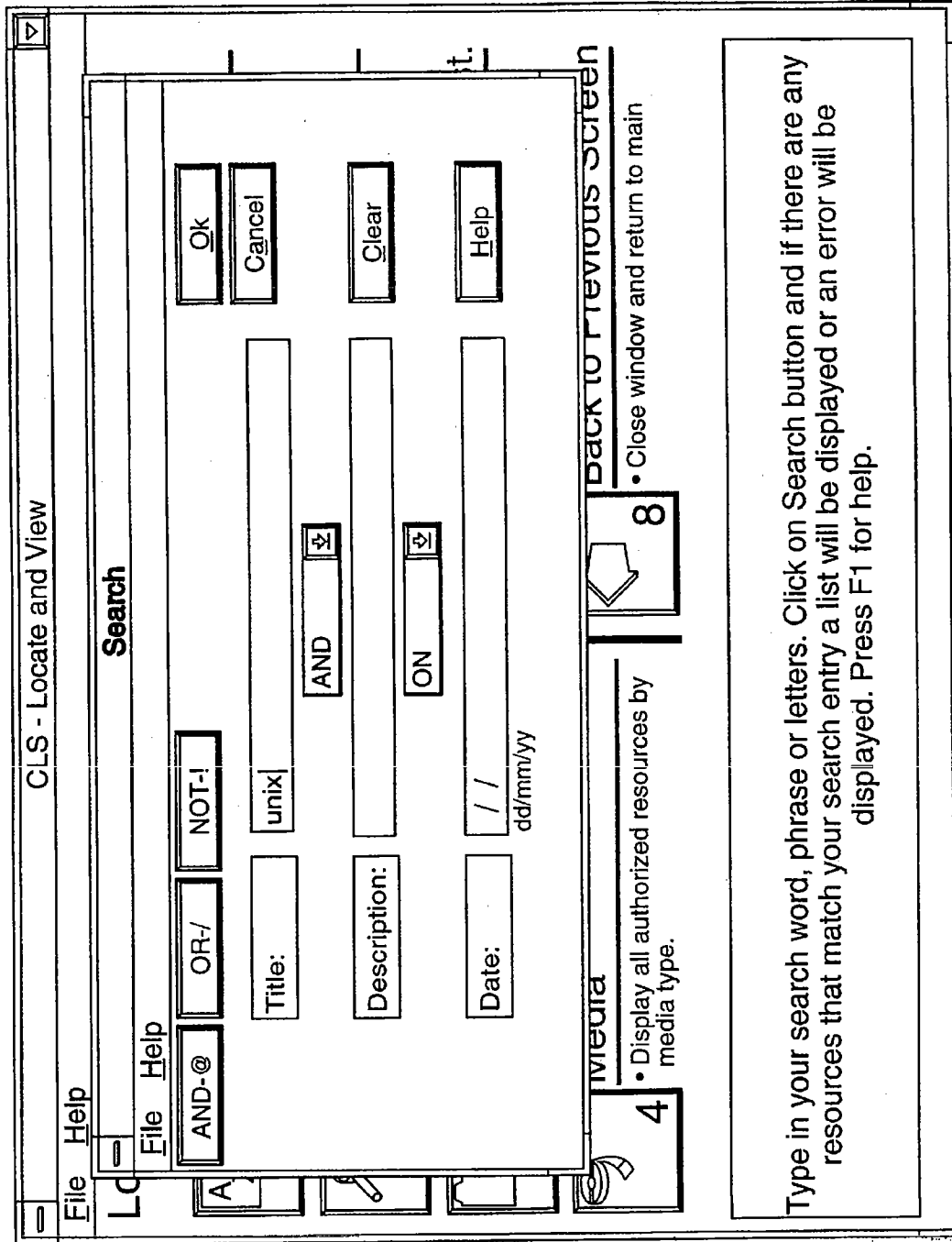


FIG. 11

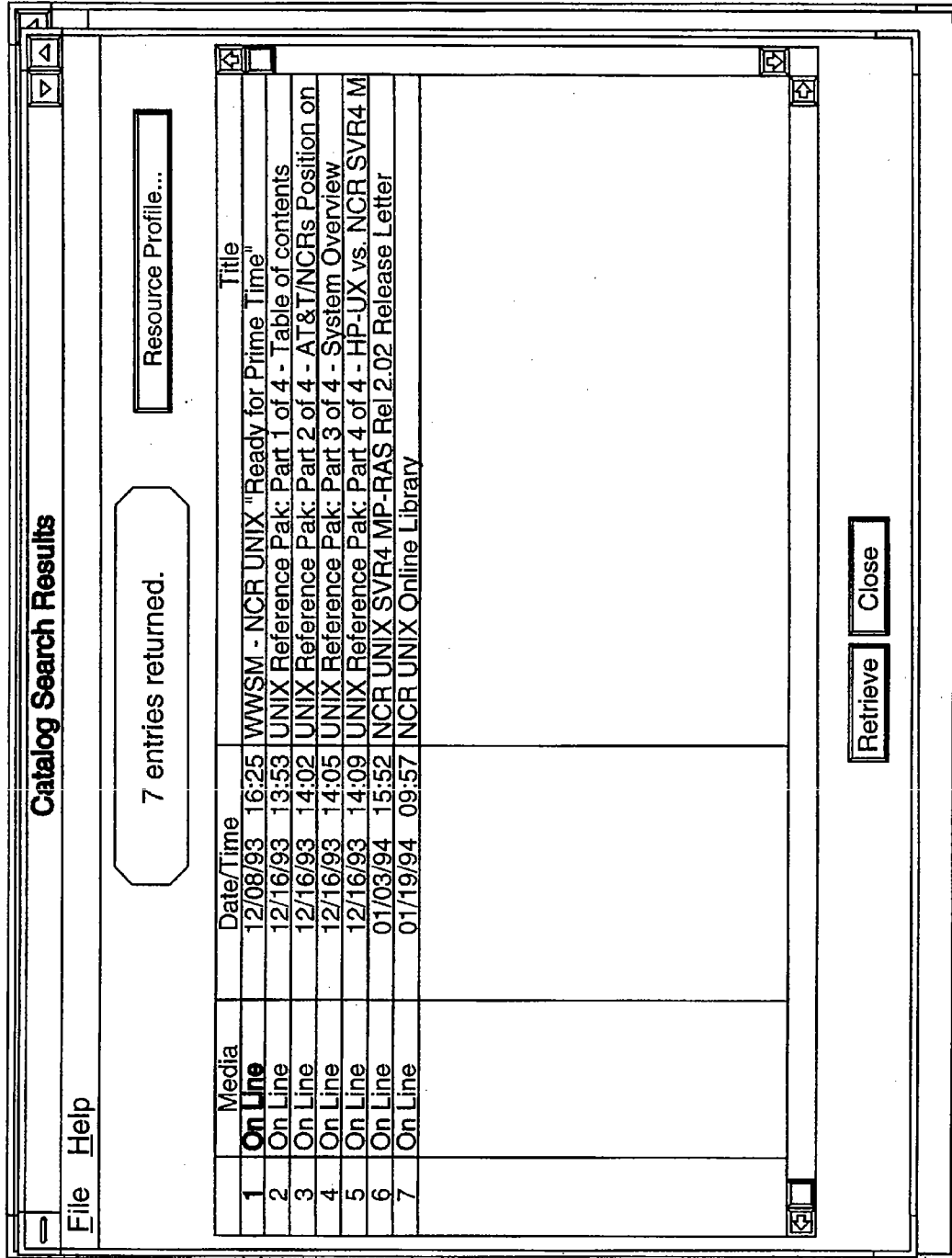
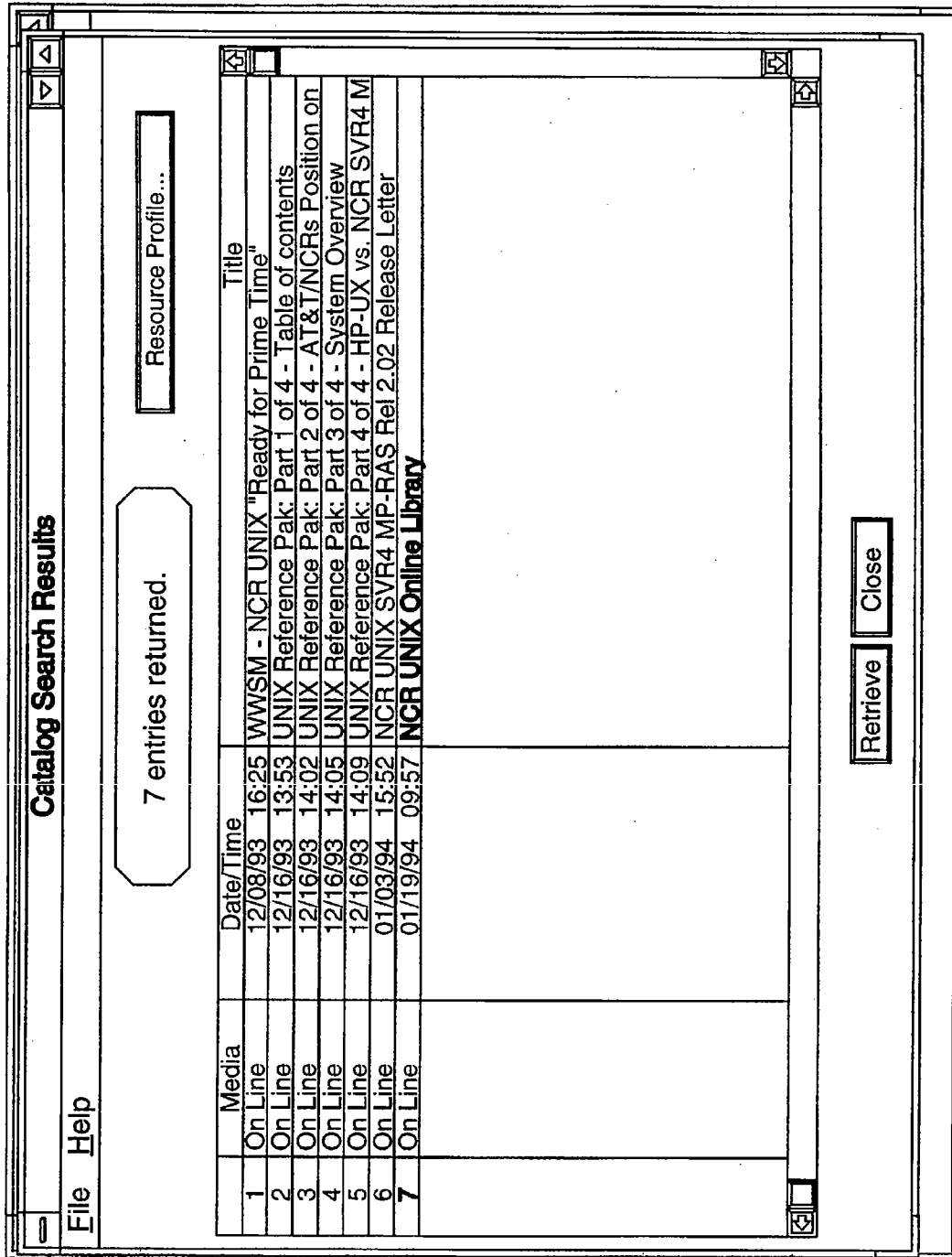


FIG. 12



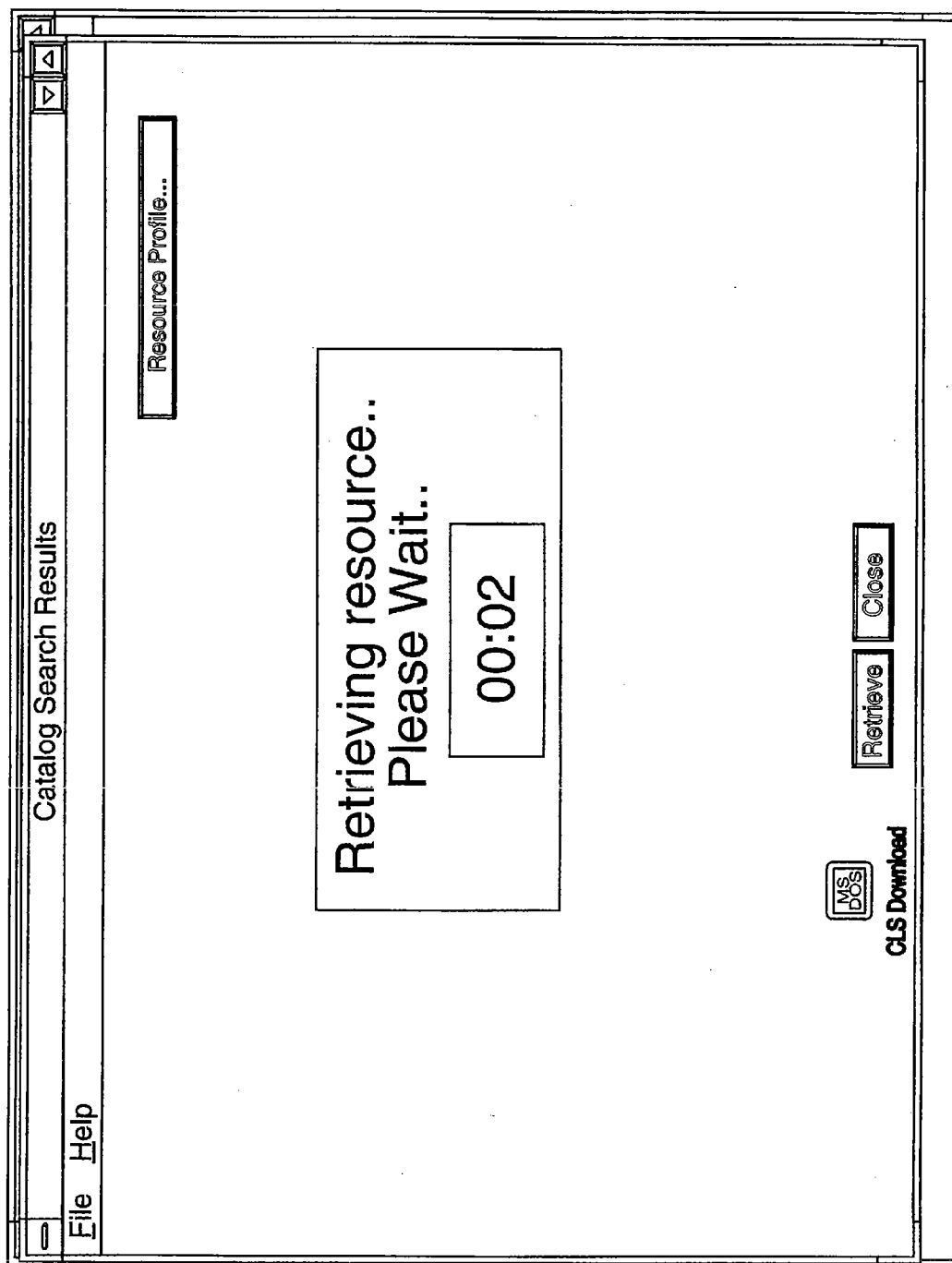


FIG. 13

FIG. 14

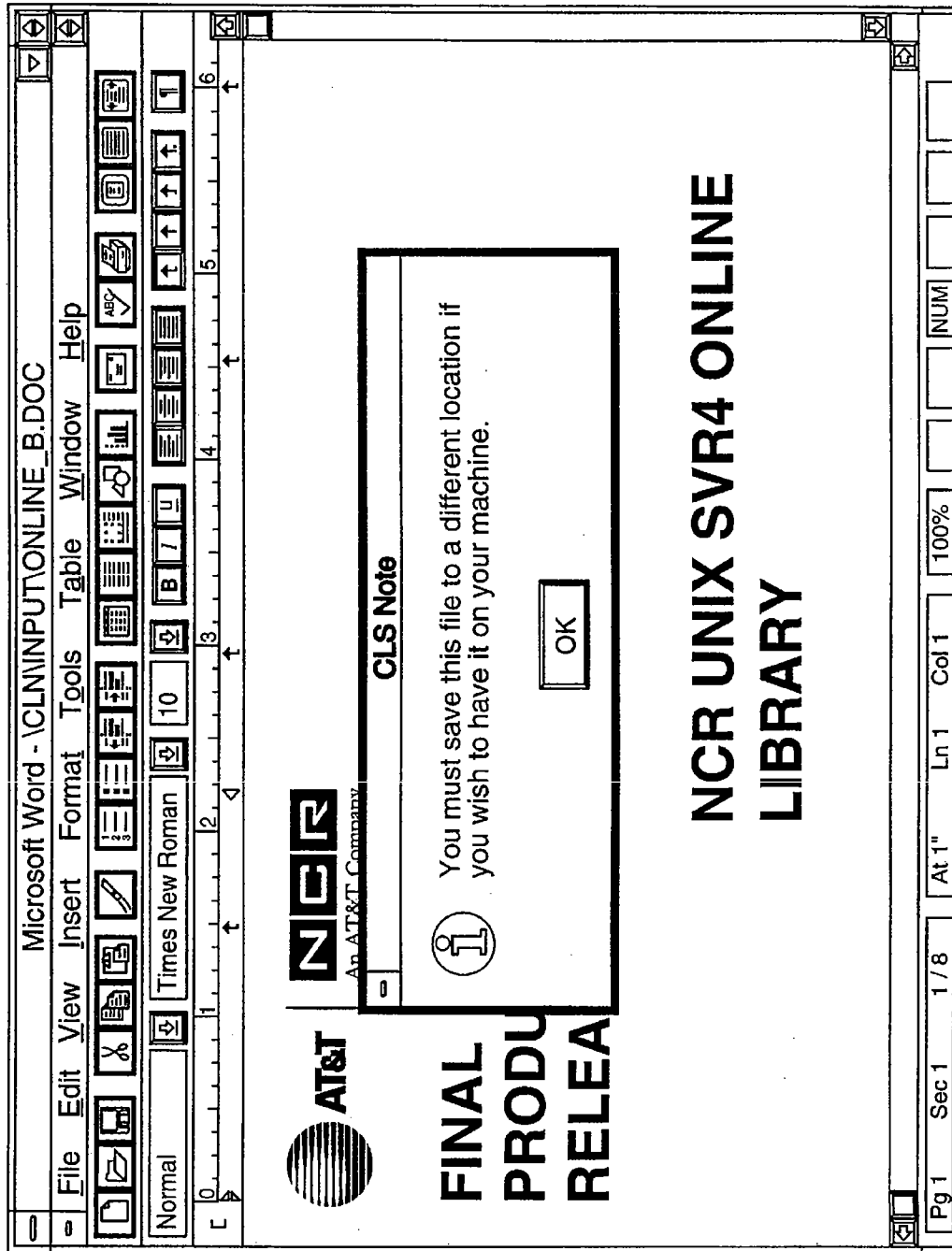


FIG. 15

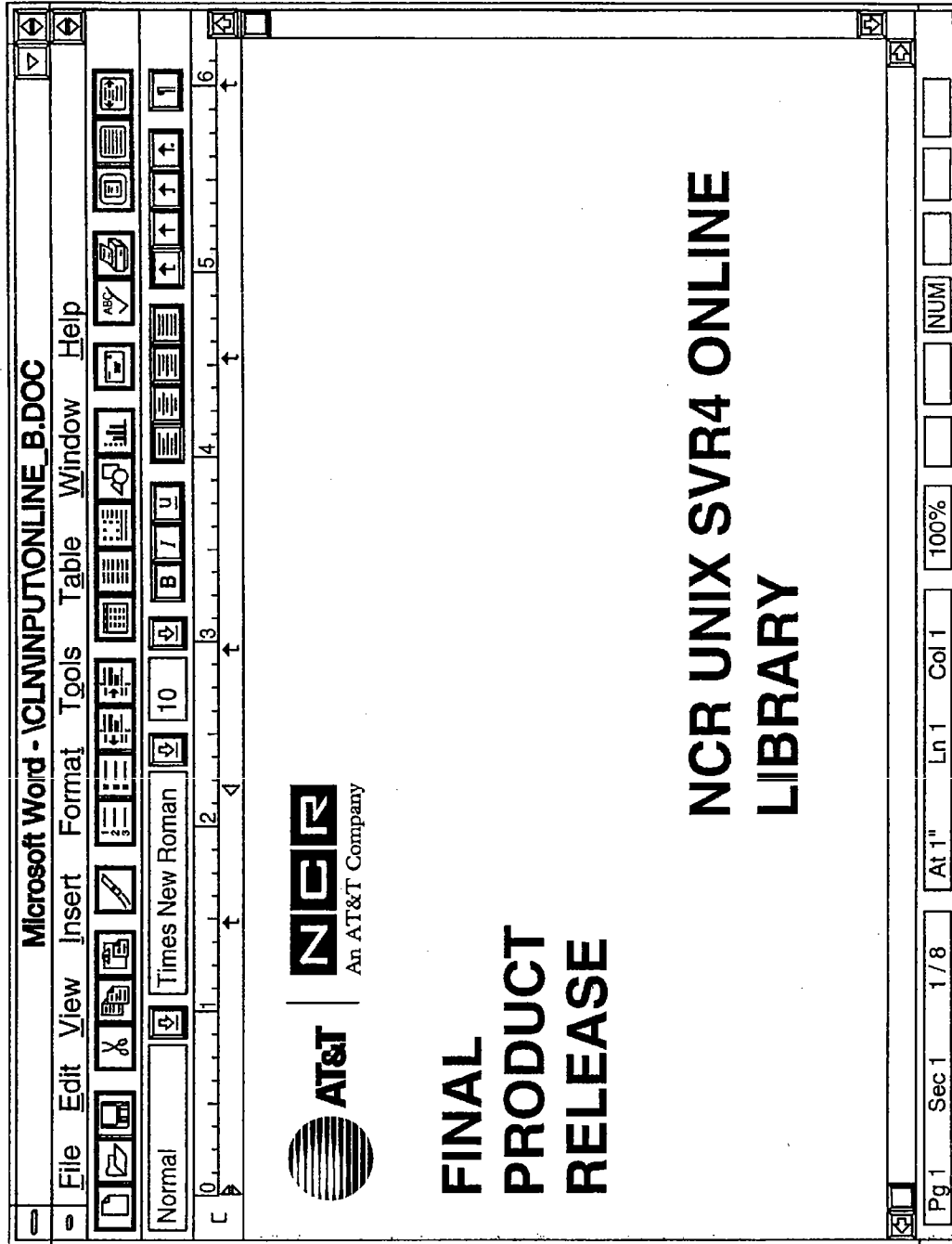
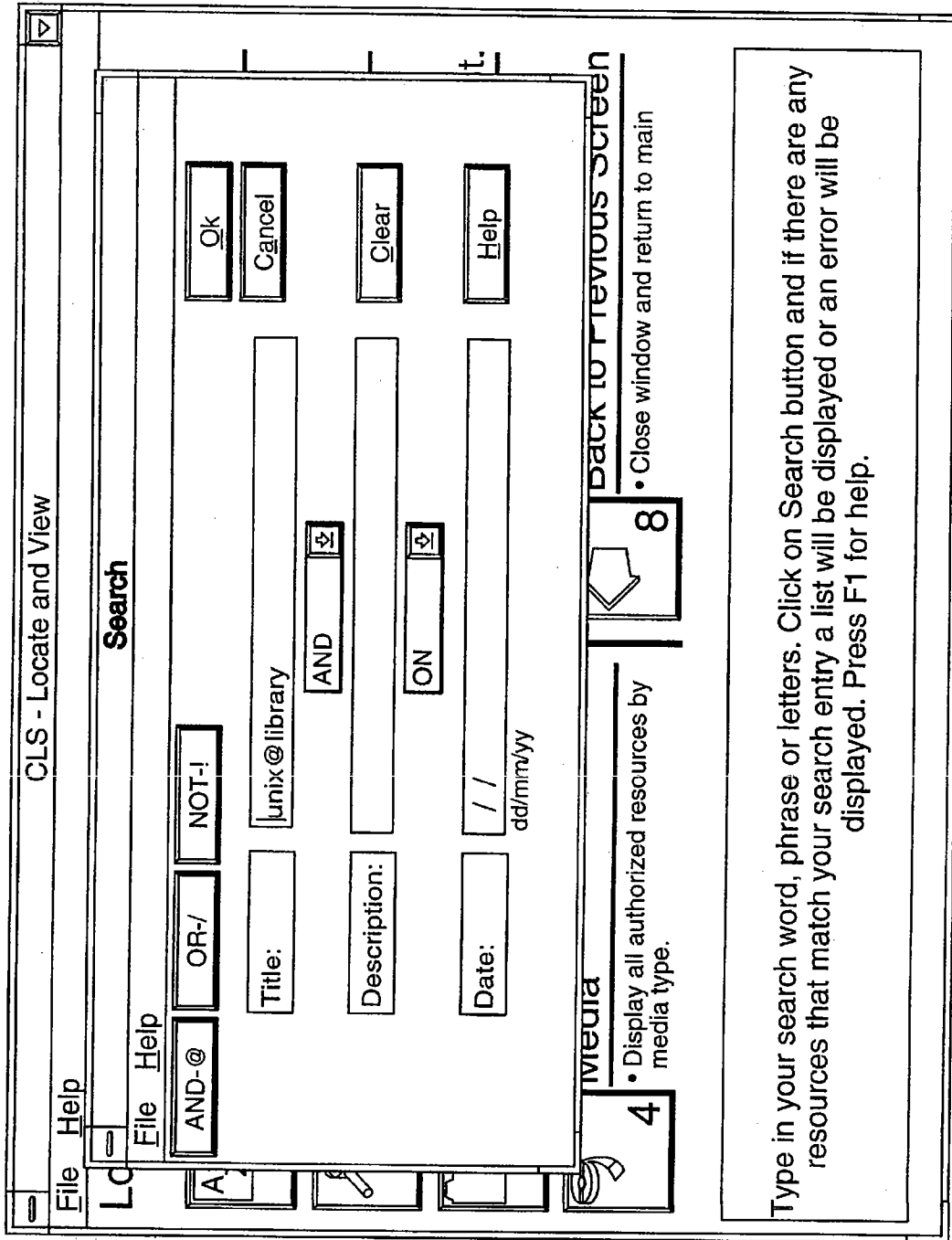


FIG. 16



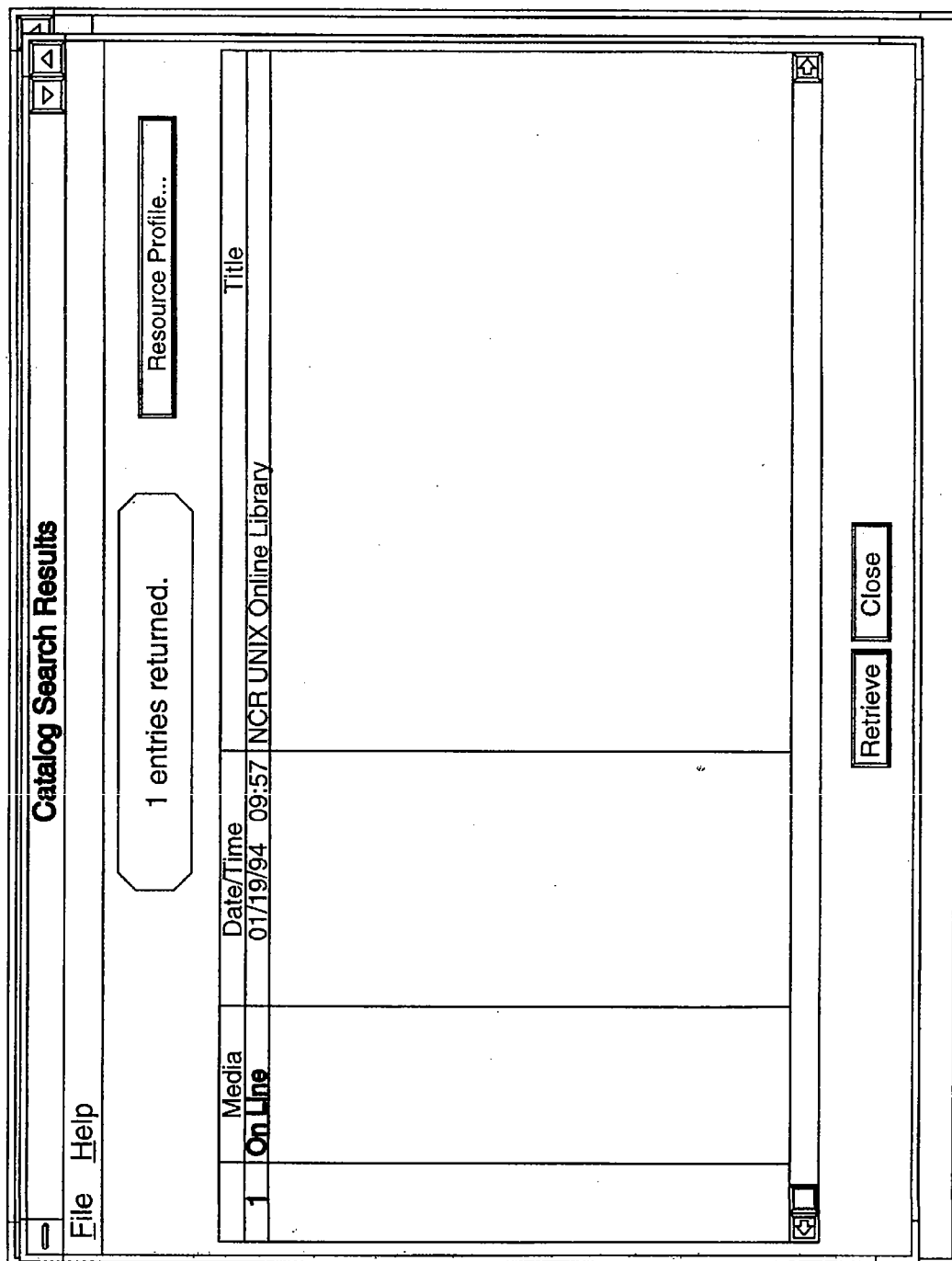


FIG. 17

FIG. 18

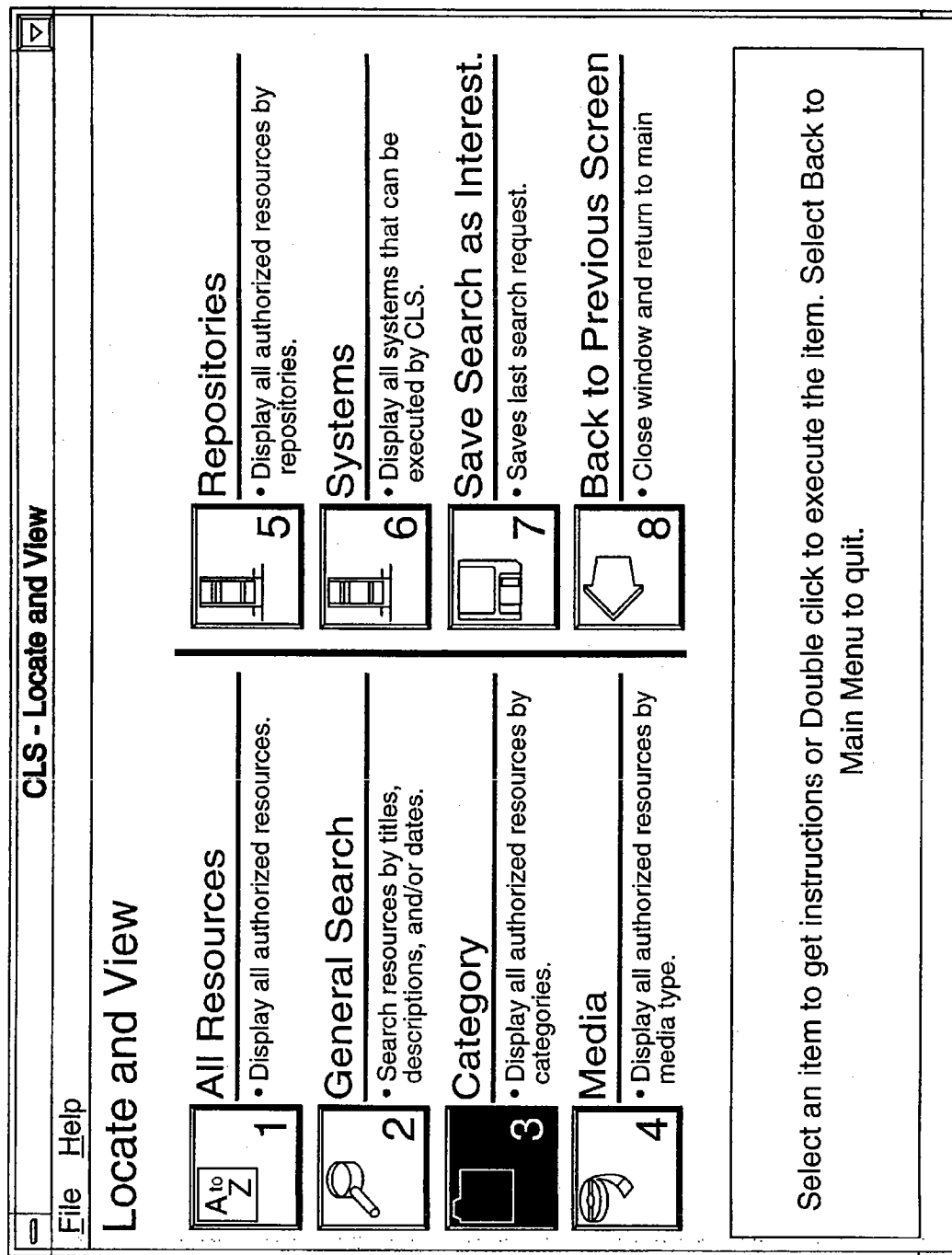
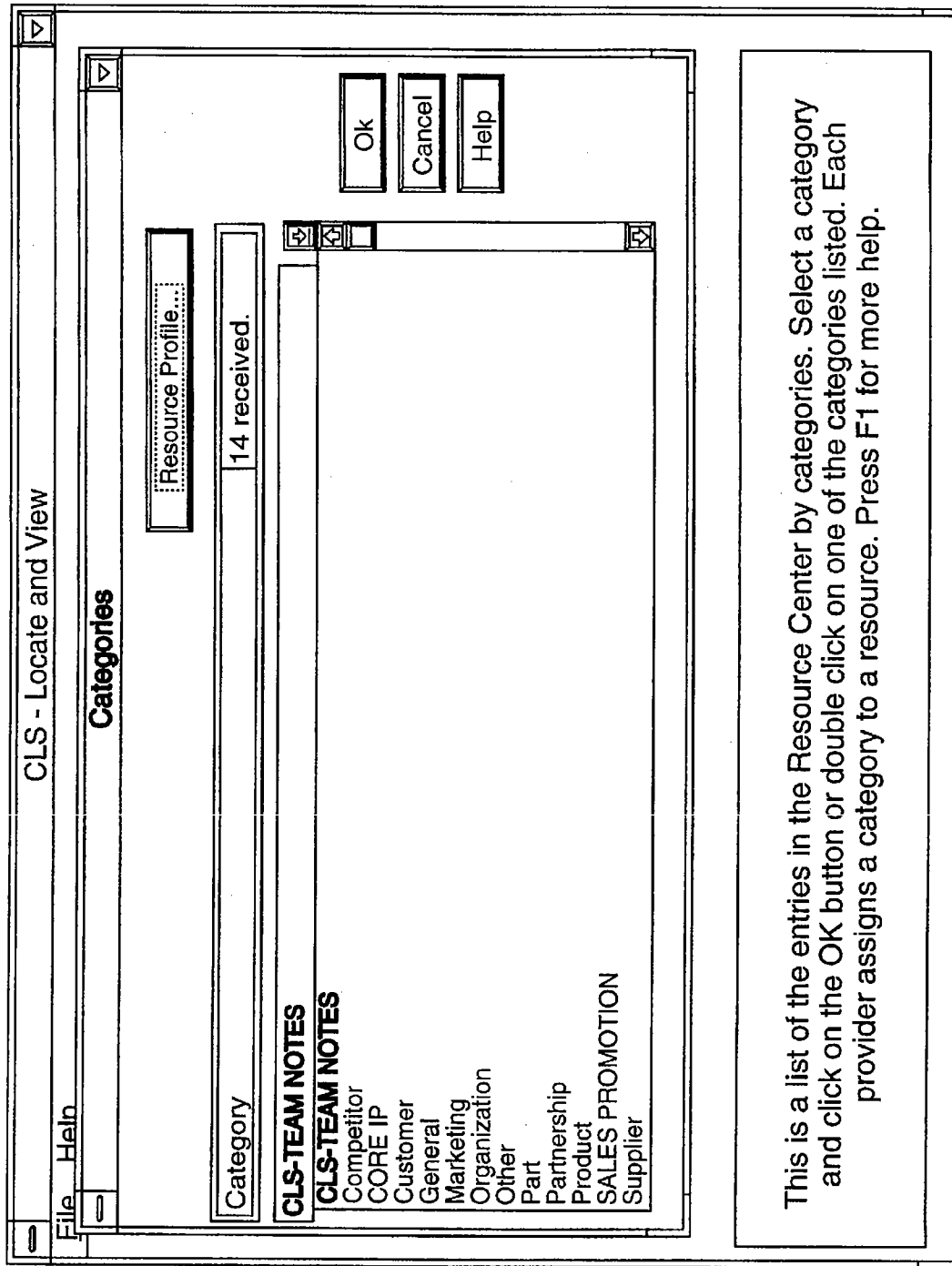
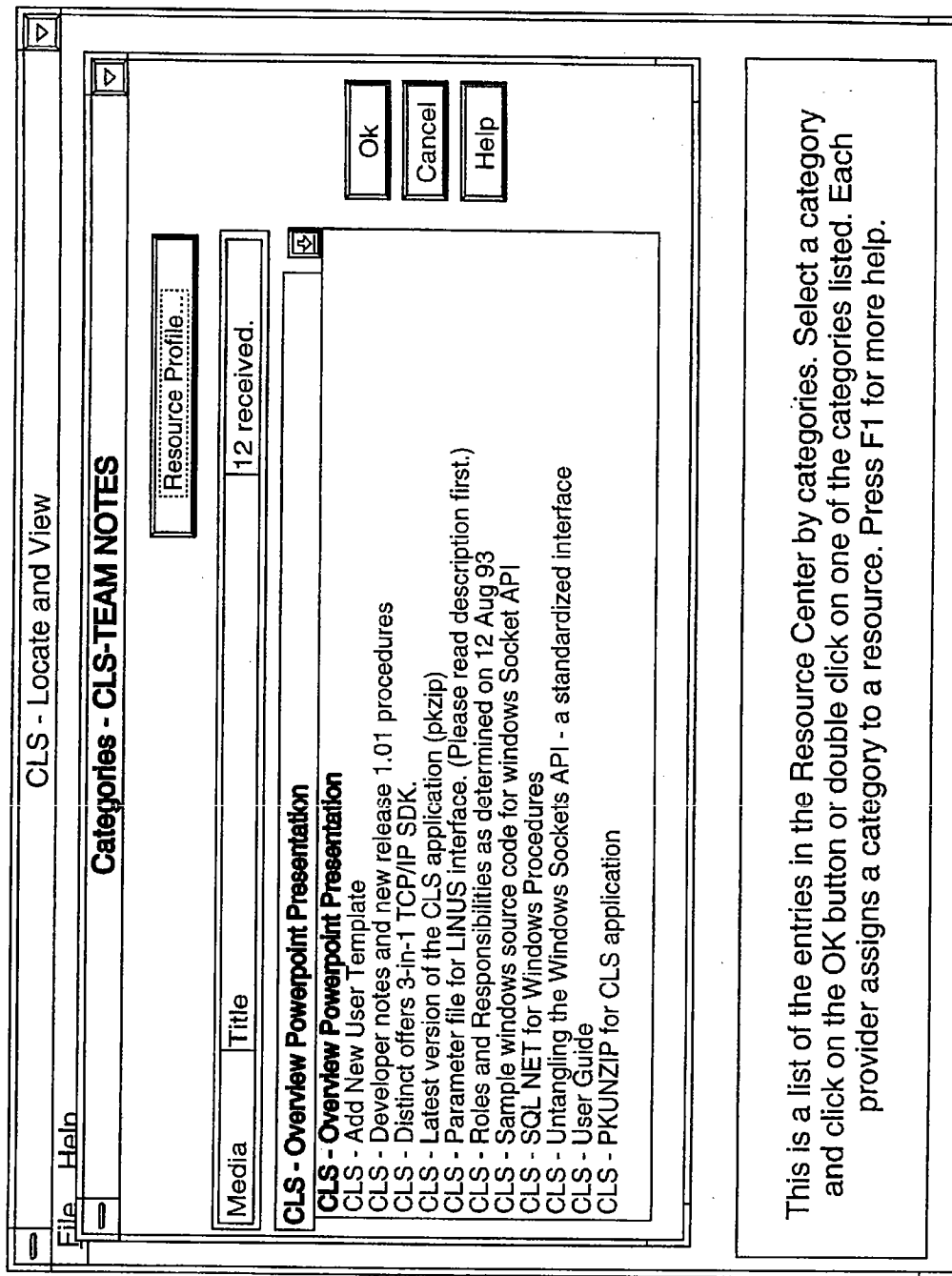


FIG. 19



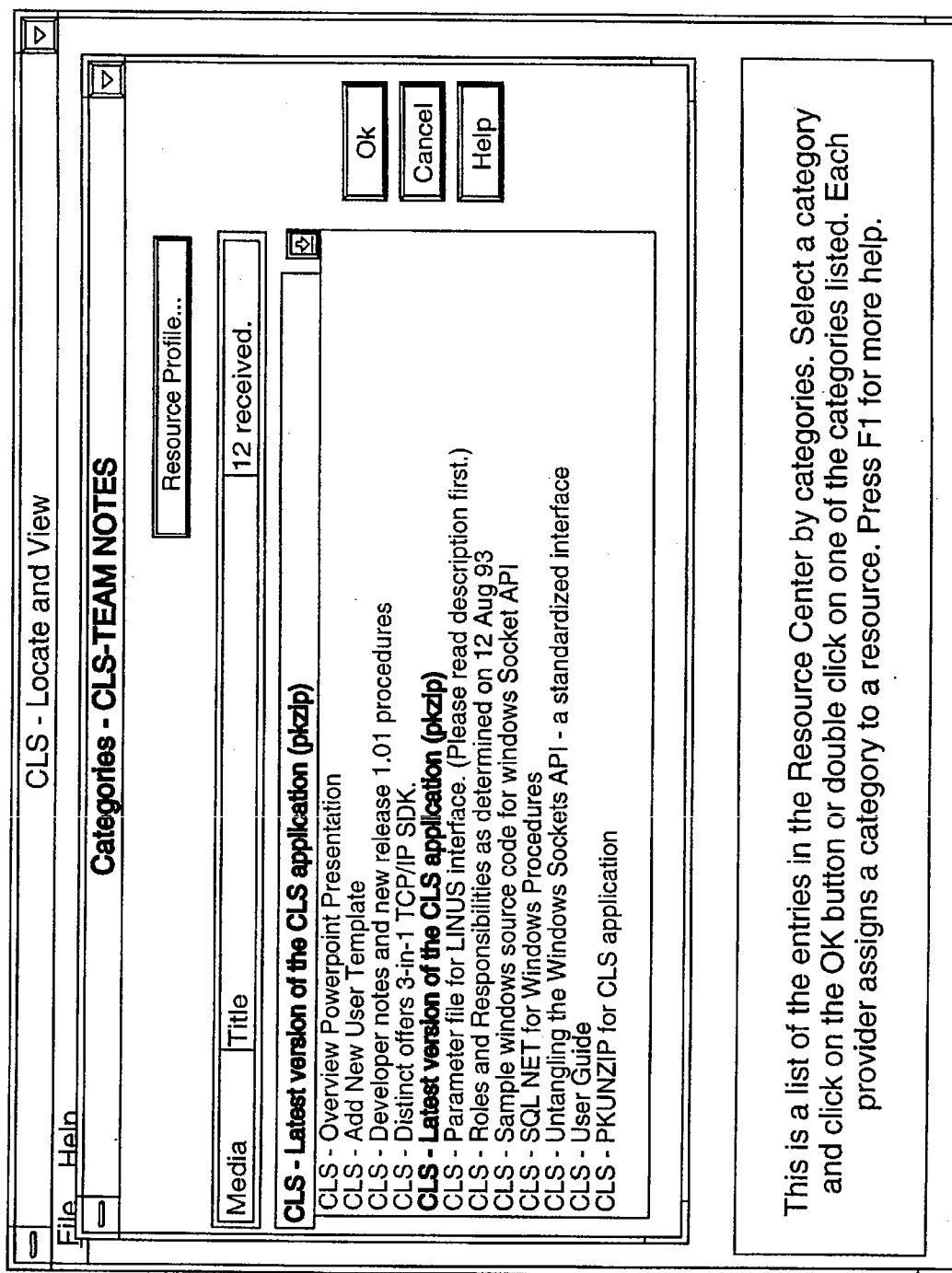
This is a list of the entries in the Resource Center by categories. Select a category and click on the OK button or double click on one of the categories listed. Each provider assigns a category to a resource. Press F1 for more help.

FIG. 20



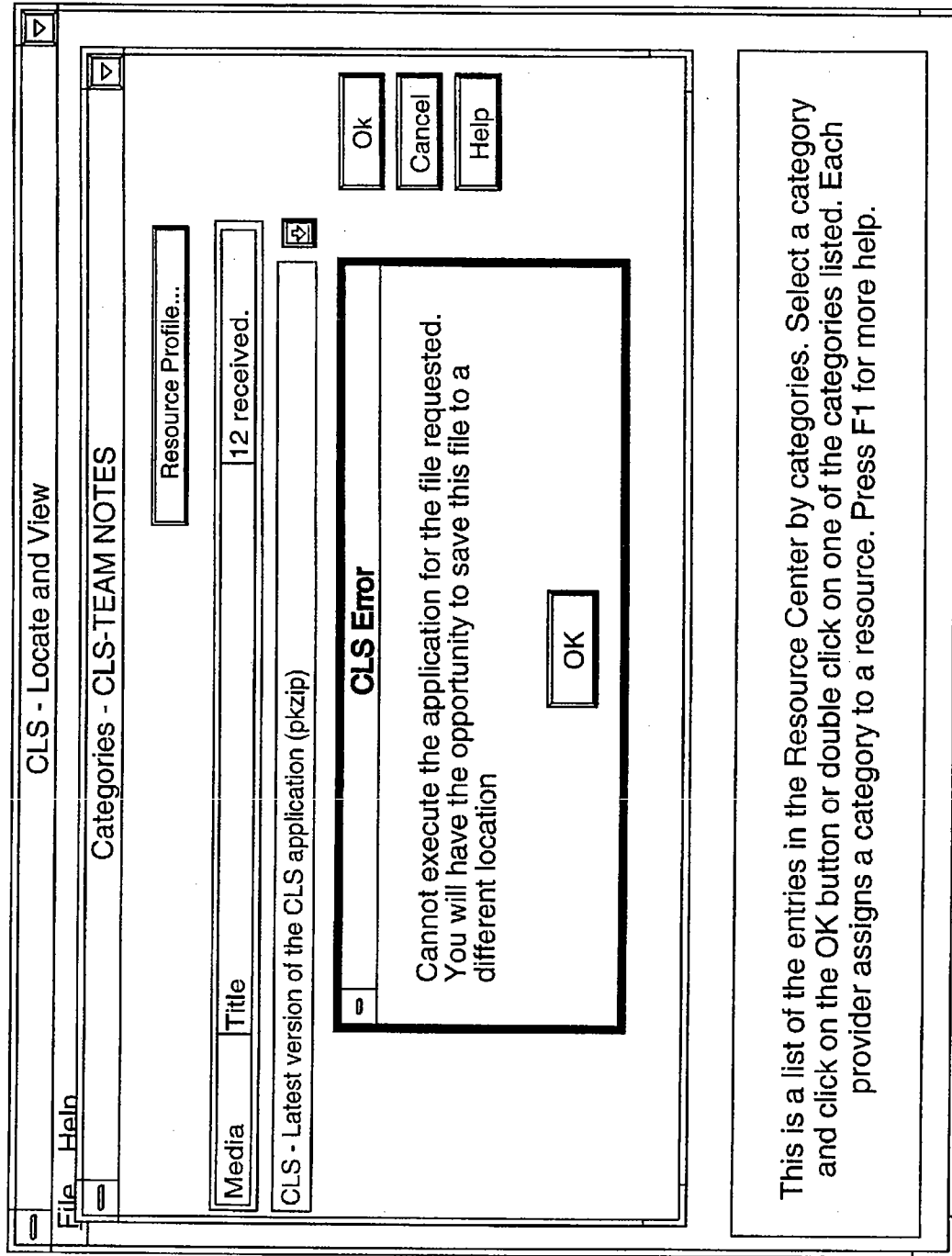
This is a list of the entries in the Resource Center by categories. Select a category and click on the OK button or double click on one of the categories listed. Each provider assigns a category to a resource. Press F1 for more help.

FIG. 21



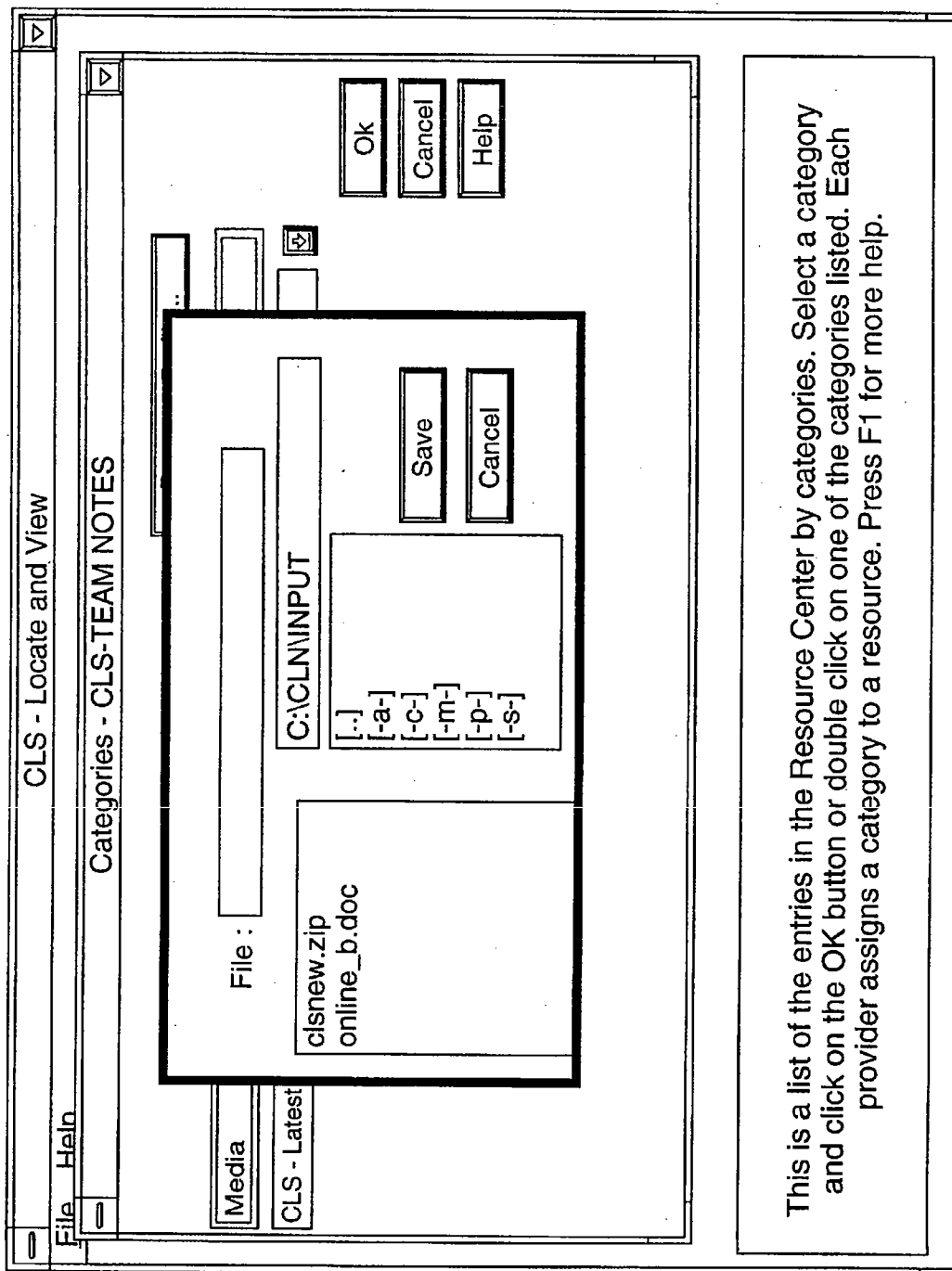
This is a list of the entries in the Resource Center by categories. Select a category and click on the OK button or double click on one of the categories listed. Each provider assigns a category to a resource. Press F1 for more help.

FIG. 22



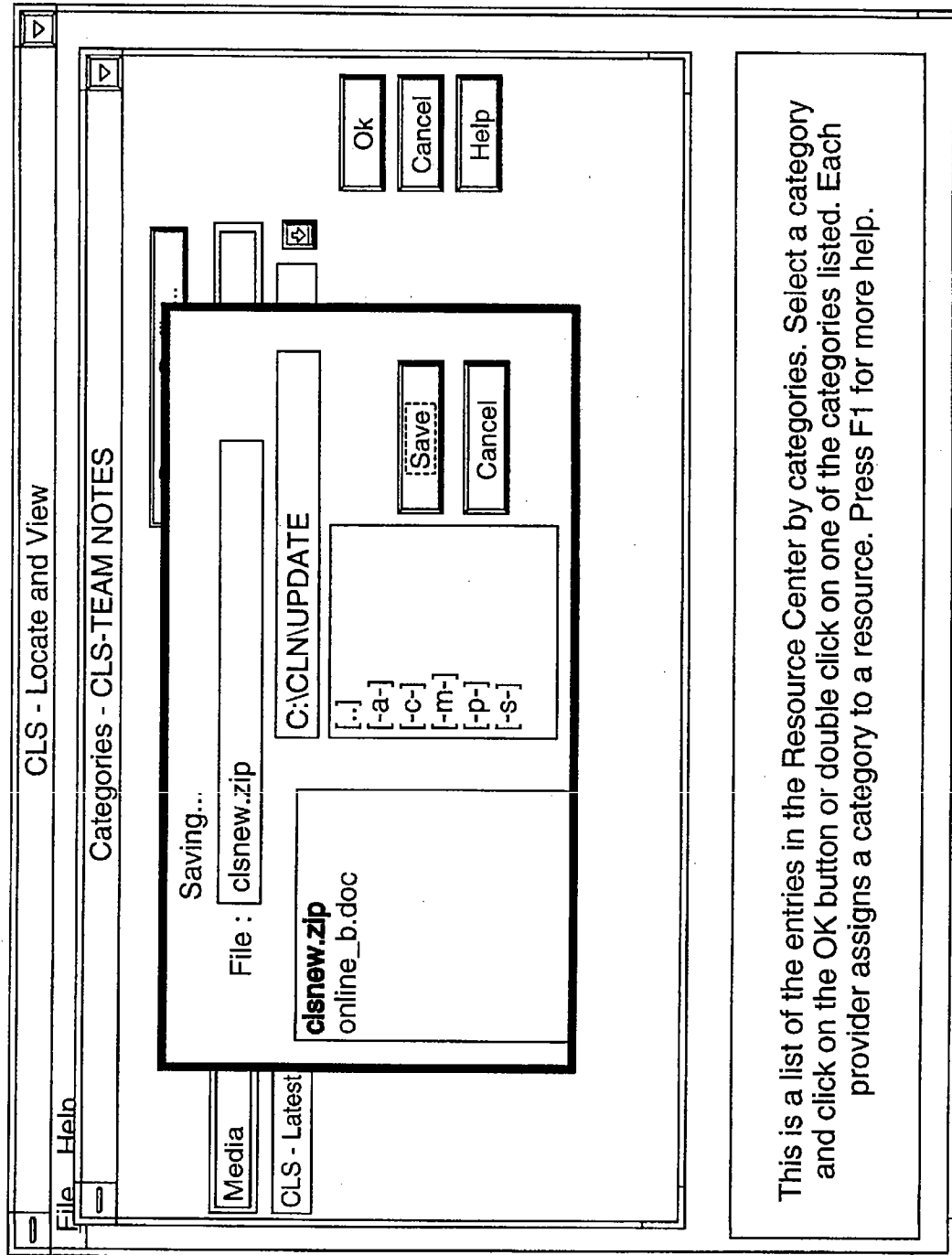
This is a list of the entries in the Resource Center by categories. Select a category and click on the OK button or double click on one of the categories listed. Each provider assigns a category to a resource. Press F1 for more help.

FIG. 23



This is a list of the entries in the Resource Center by categories. Select a category and click on the OK button or double click on one of the categories listed. Each provider assigns a category to a resource. Press F1 for more help.

FIG. 24



This is a list of the entries in the Resource Center by categories. Select a category and click on the OK button or double click on one of the categories listed. Each provider assigns a category to a resource. Press F1 for more help.

FIG. 25

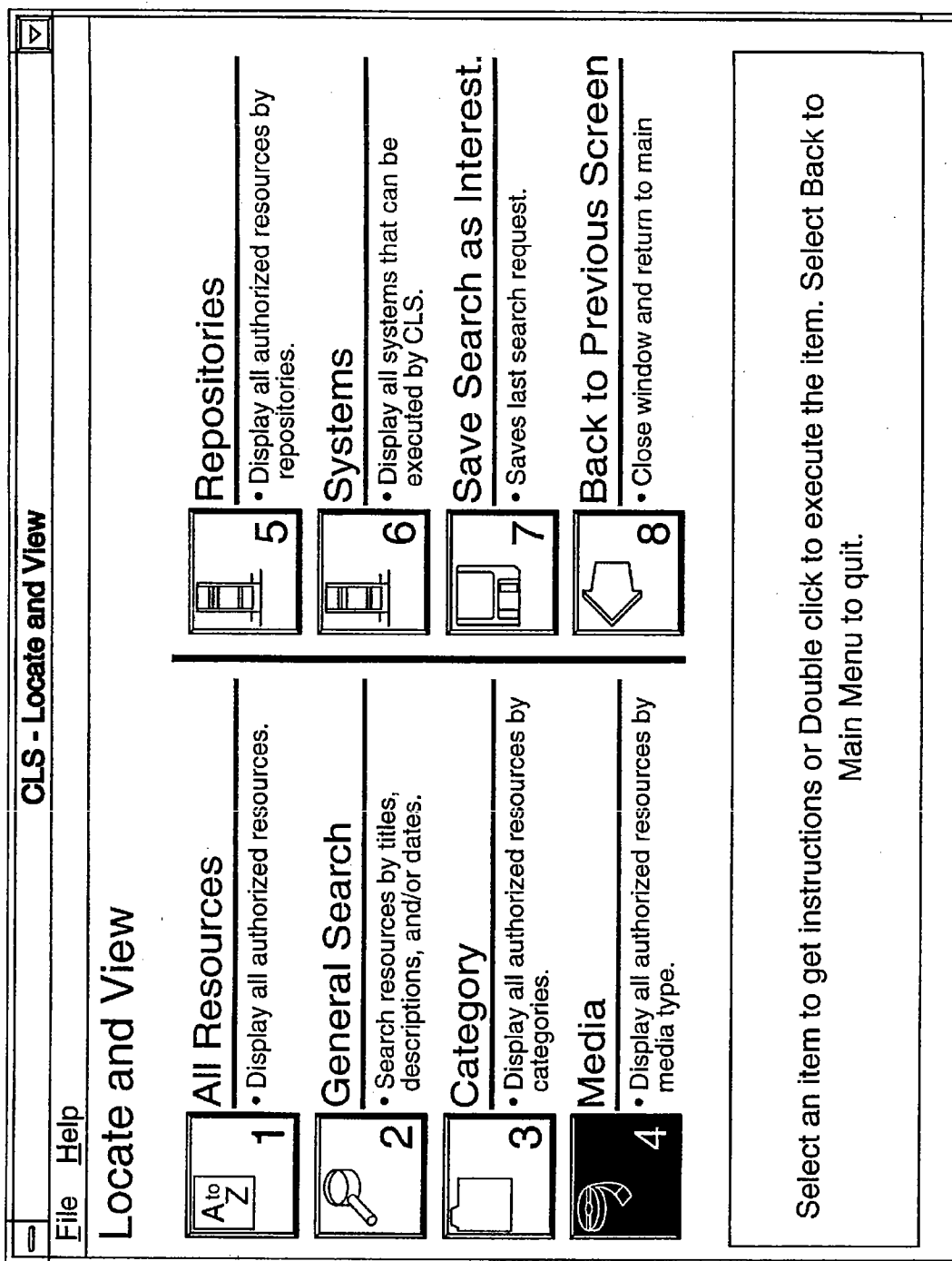
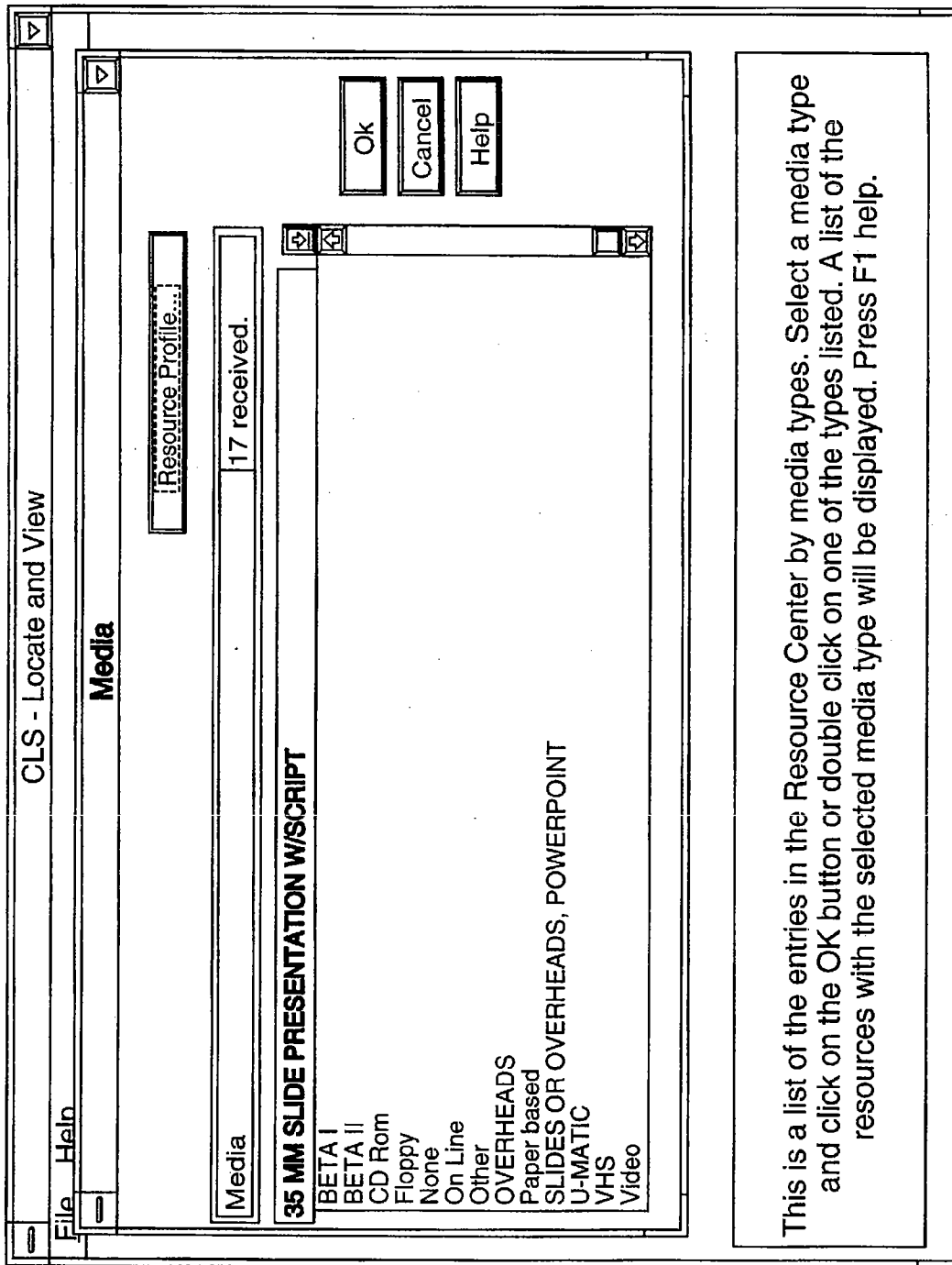
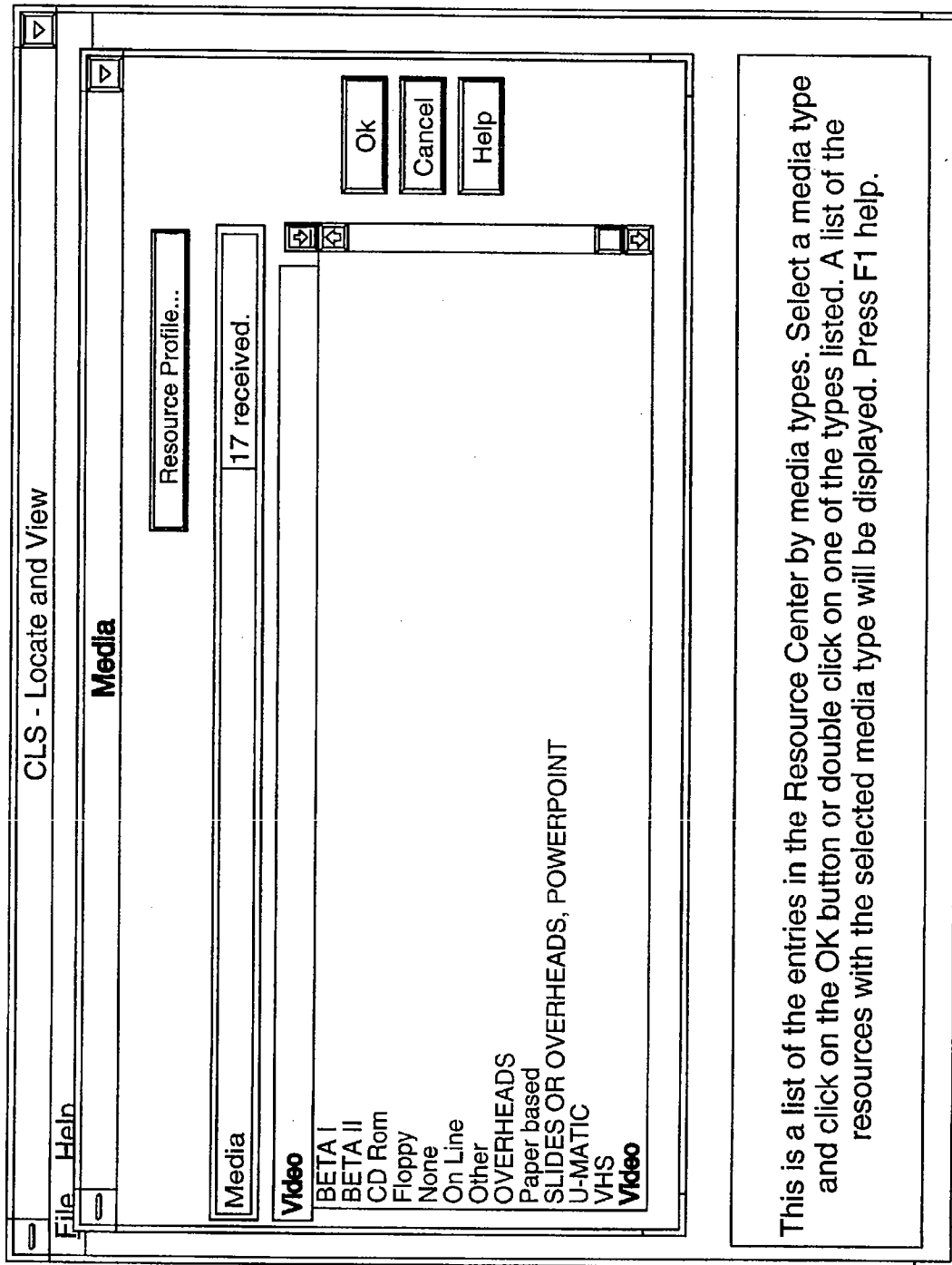


FIG. 26

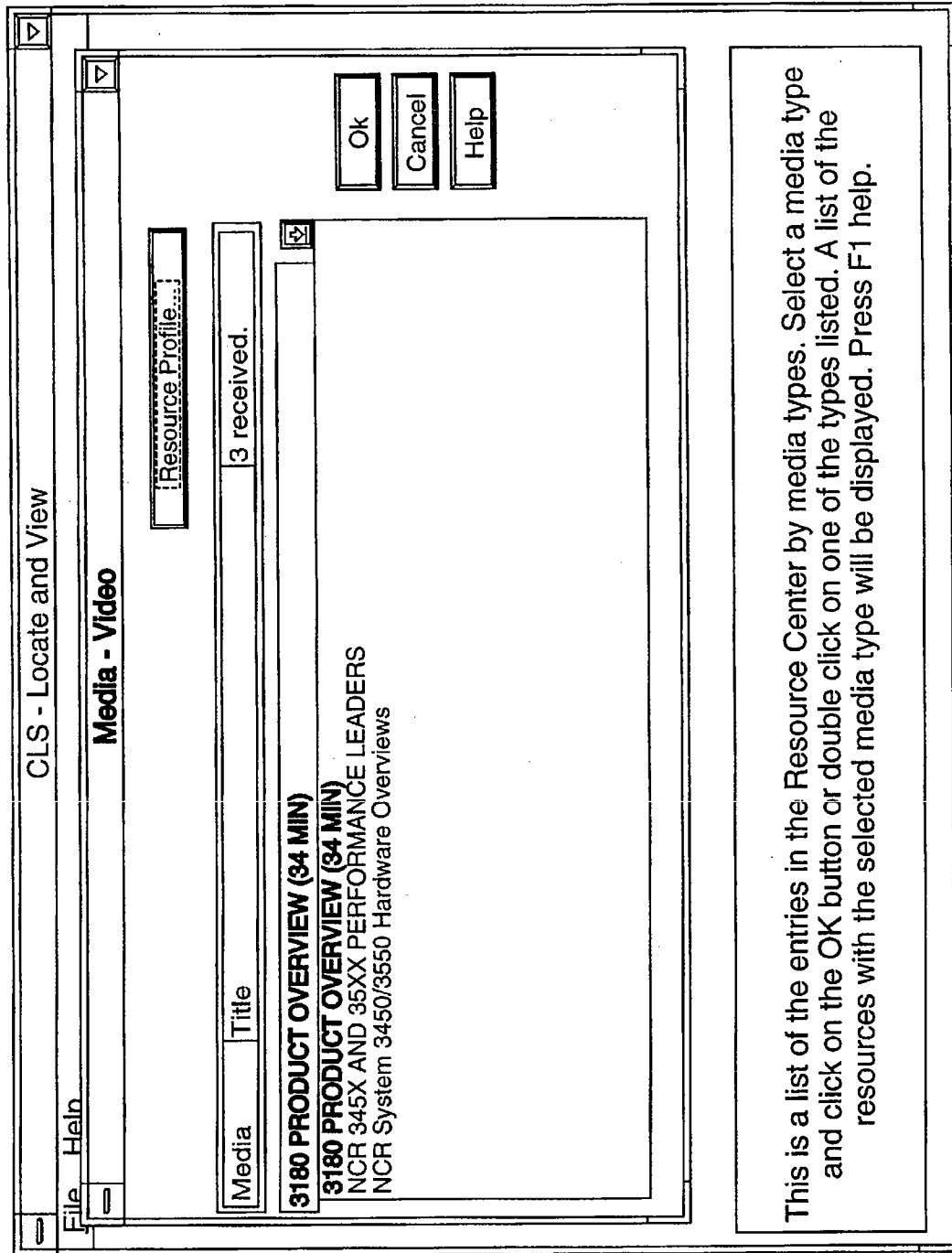




This is a list of the entries in the Resource Center by media types. Select a media type and click on the OK button or double click on one of the types listed. A list of the resources with the selected media type will be displayed. Press F1 help.

FIG. 27

FIG. 28



This is a list of the entries in the Resource Center by media types. Select a media type and click on the OK button or double click on one of the types listed. A list of the resources with the selected media type will be displayed. Press F1 help.

FIG. 29

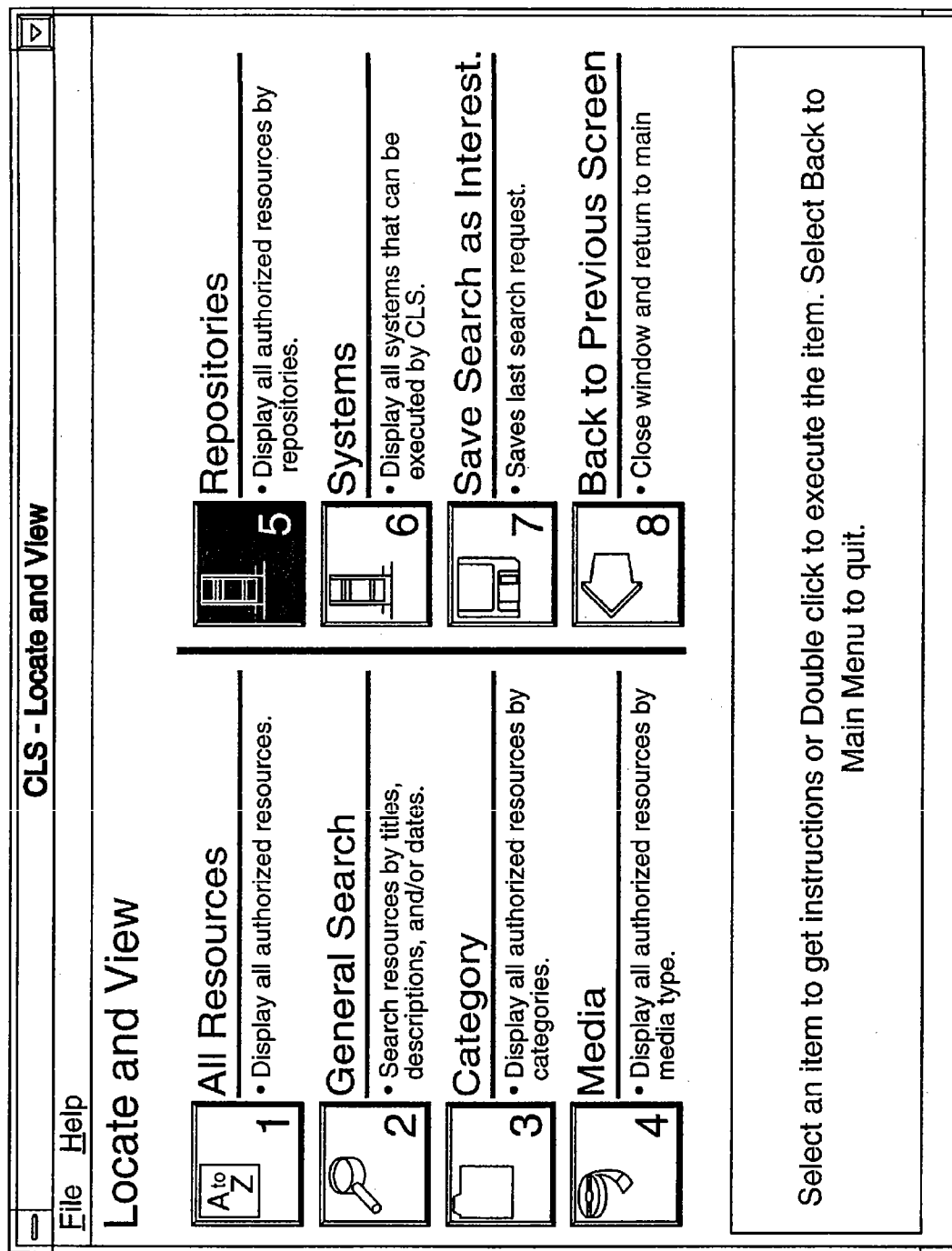


FIG. 30

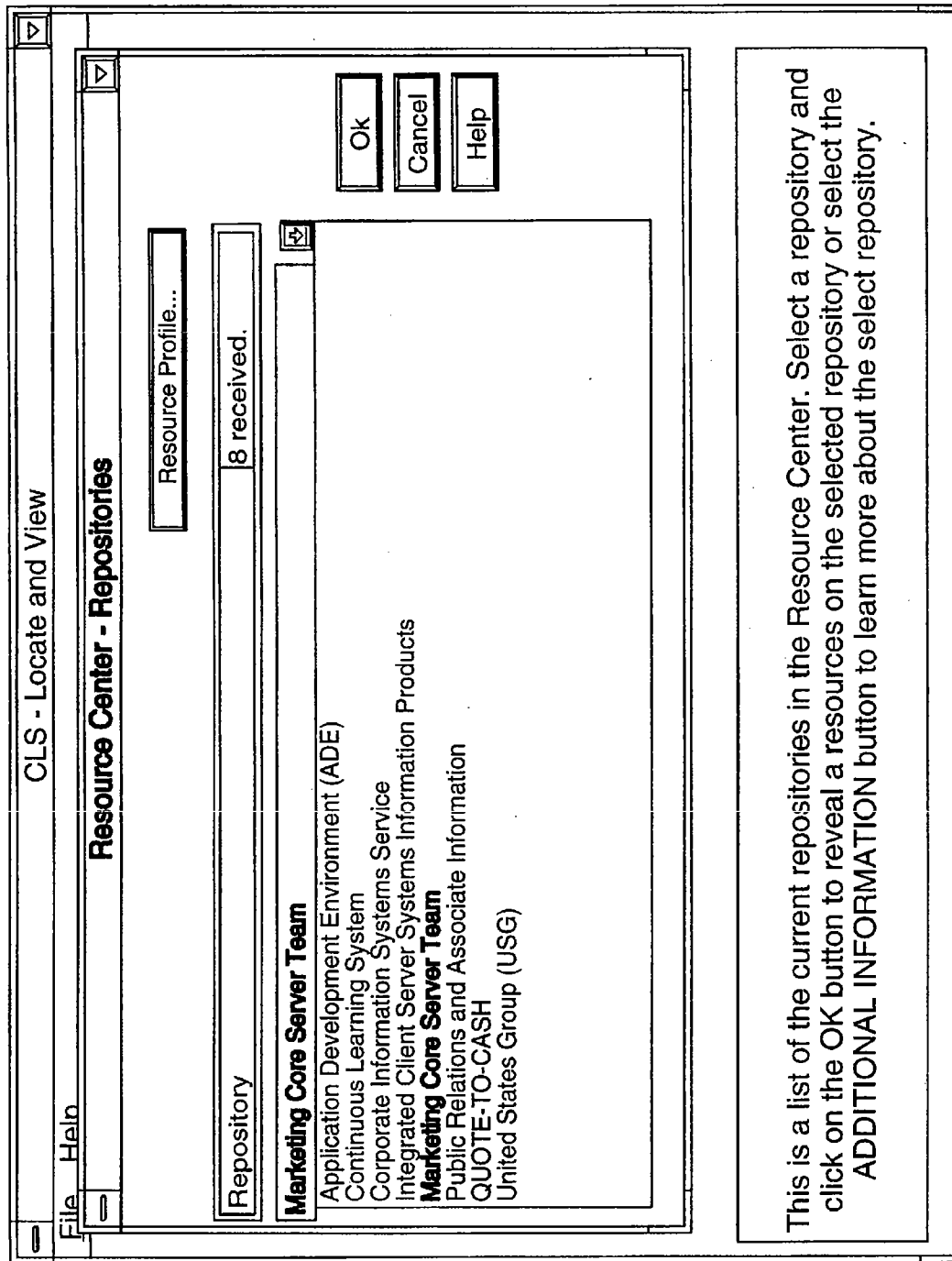
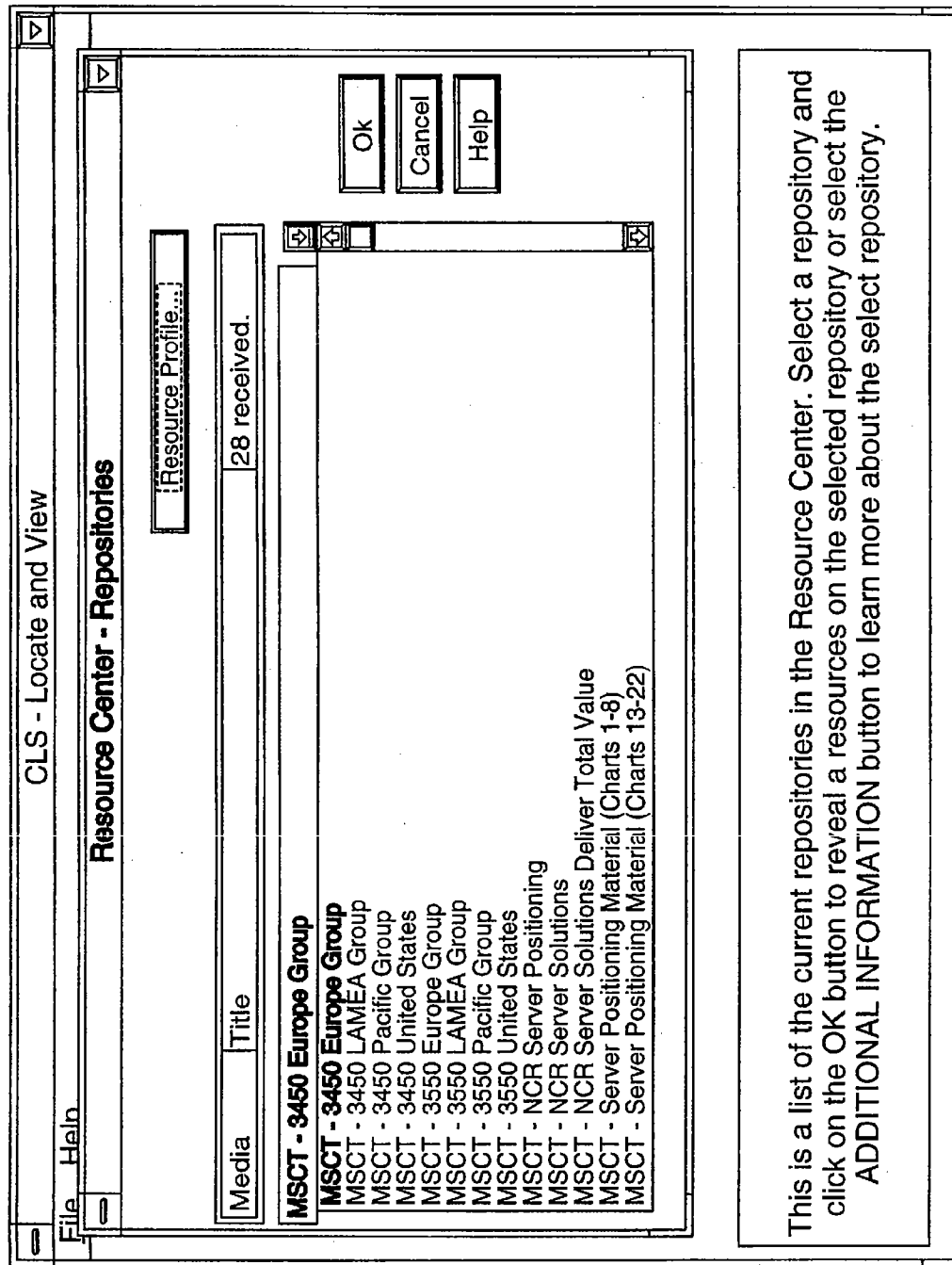


FIG. 31



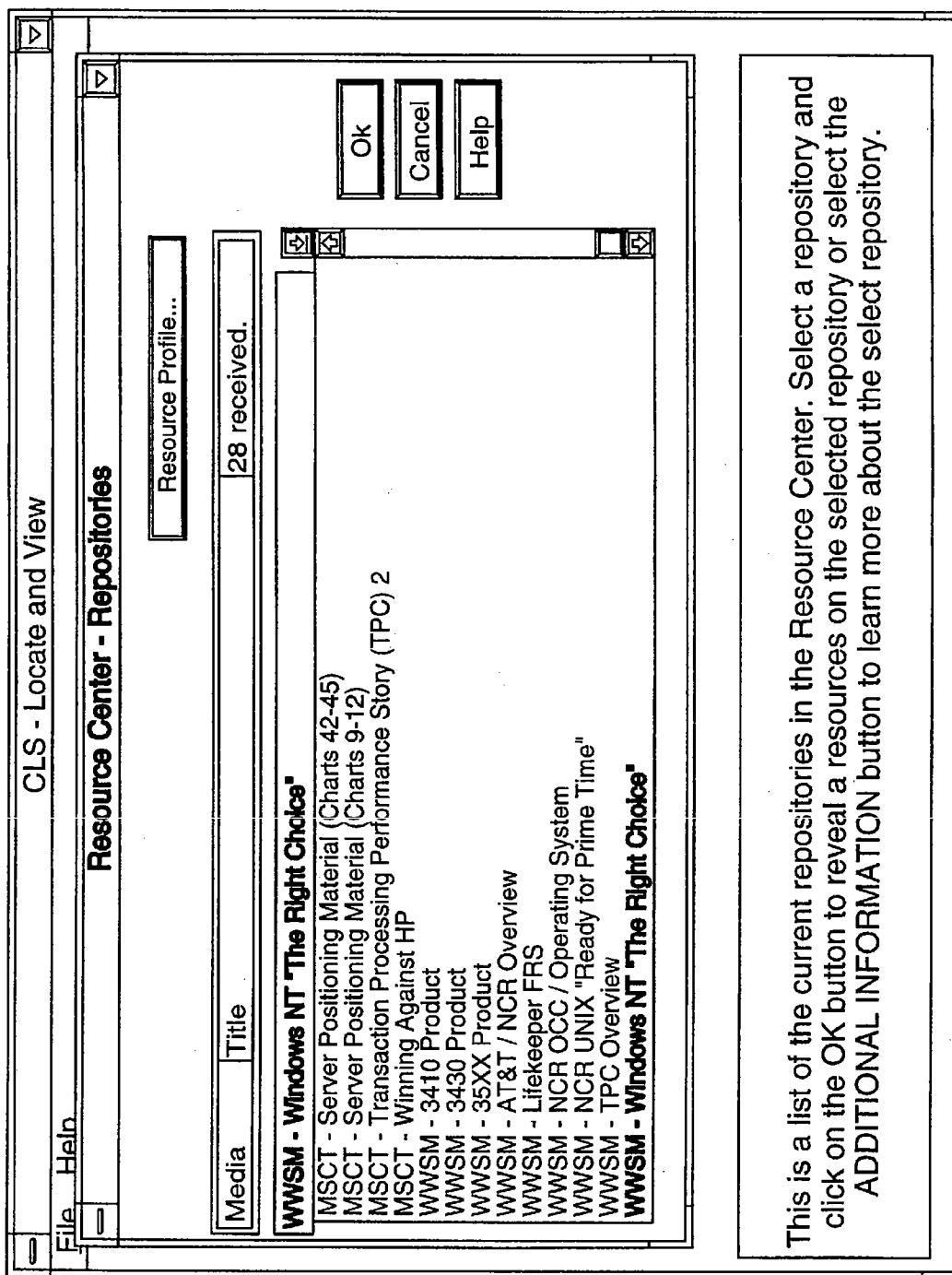


FIG. 32

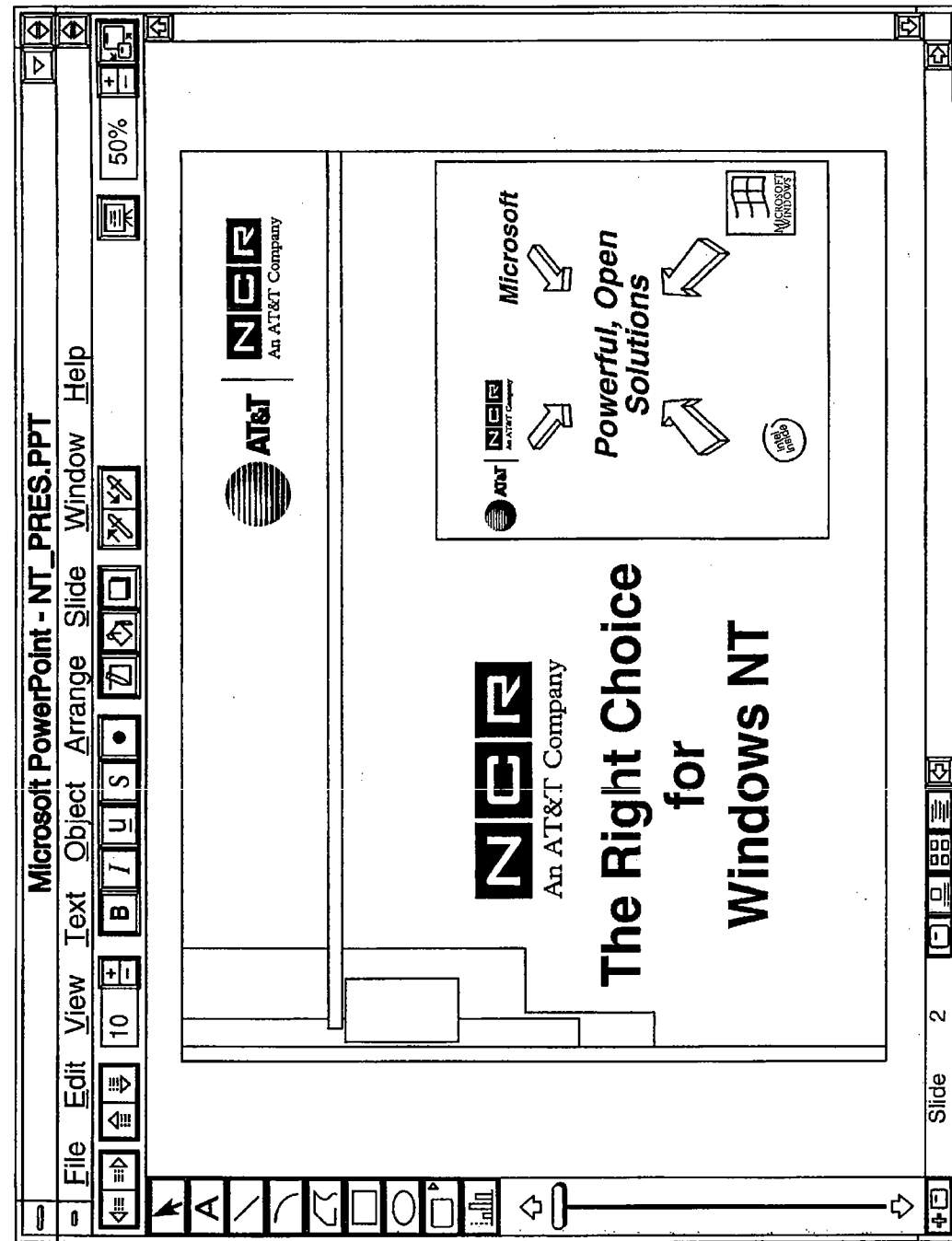


FIG. 33

FIG. 34

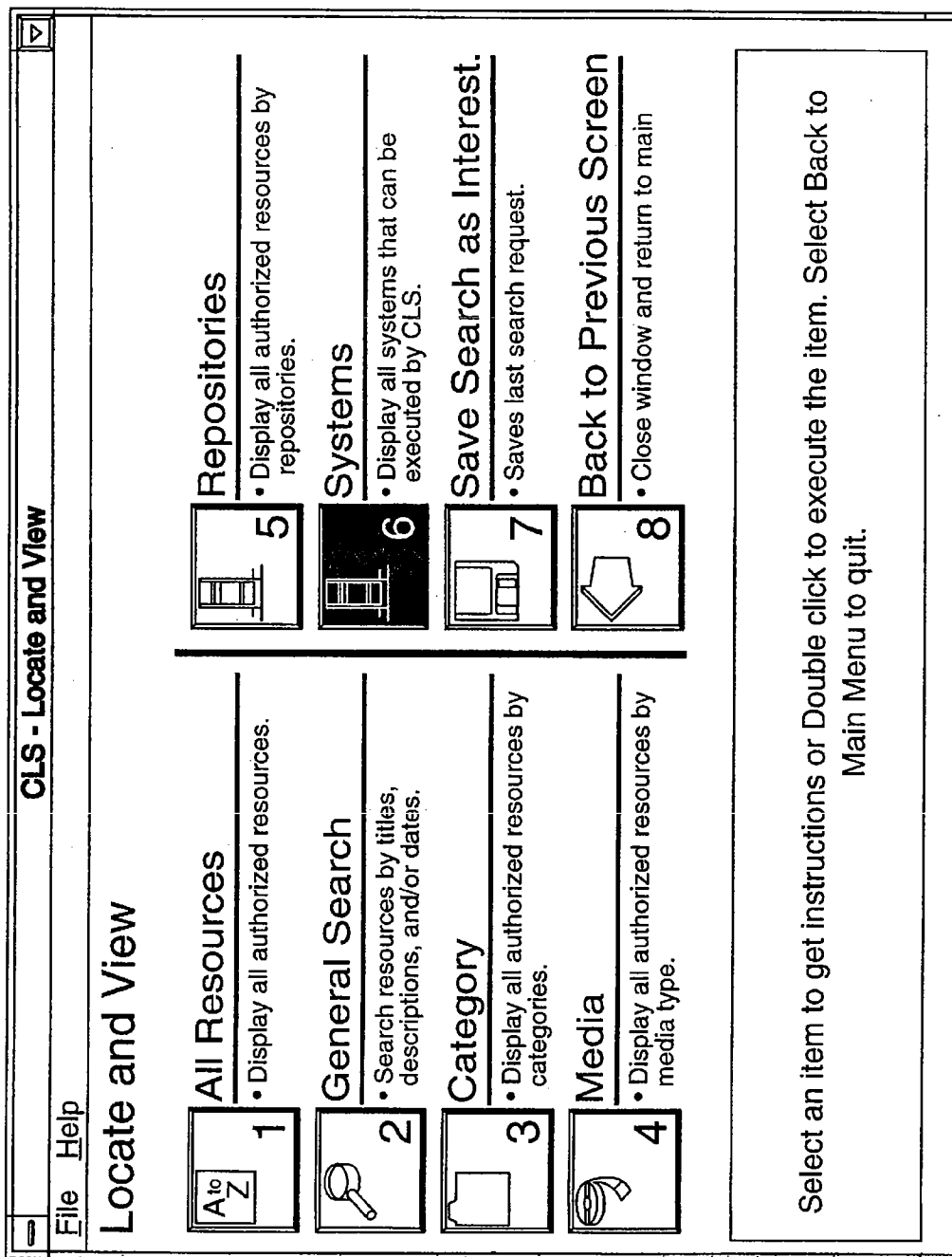
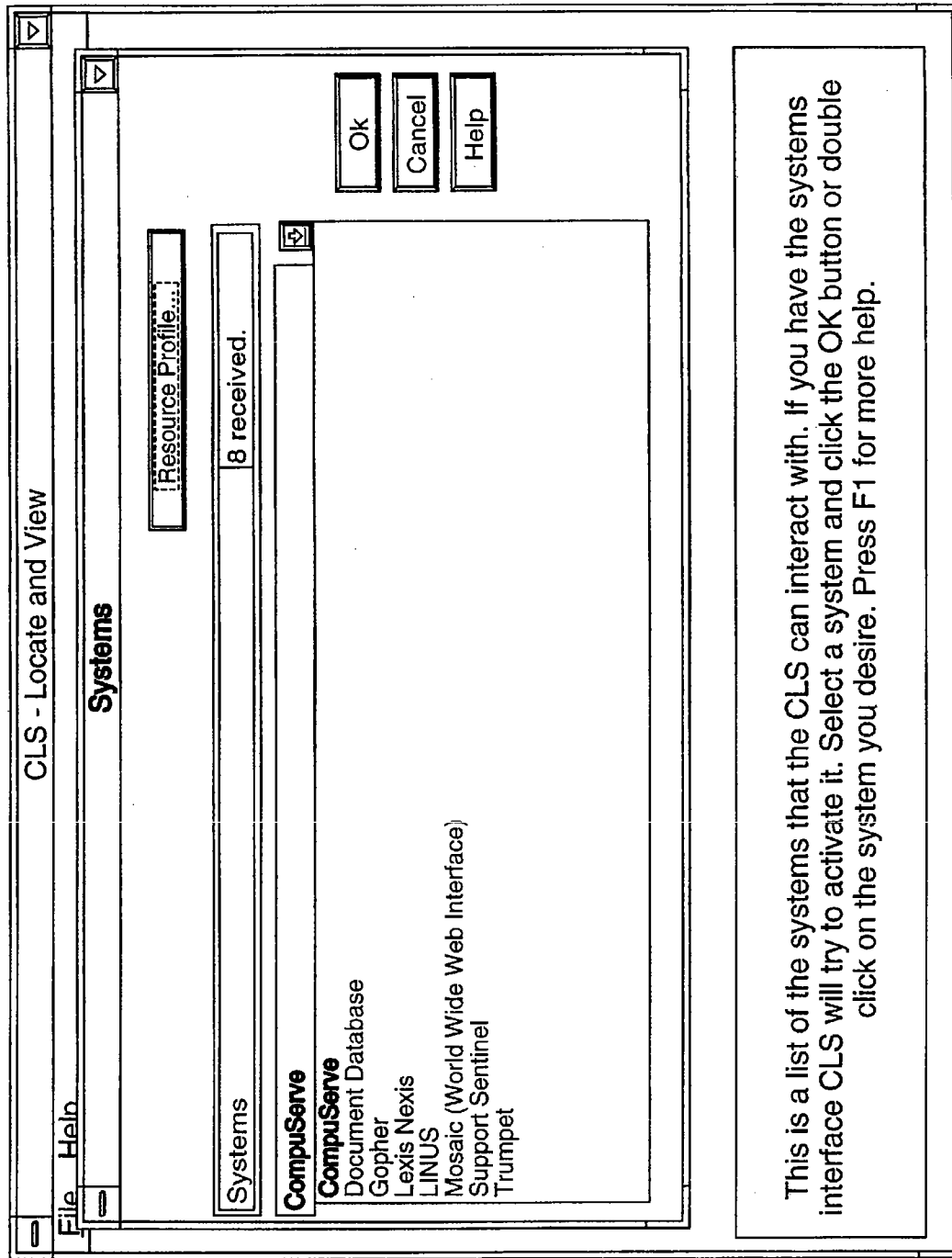


FIG. 35



This is a list of the systems that the CLS can interact with. If you have the systems interface CLS will try to activate it. Select a system and click the OK button or double click on the system you desire. Press F1 for more help.

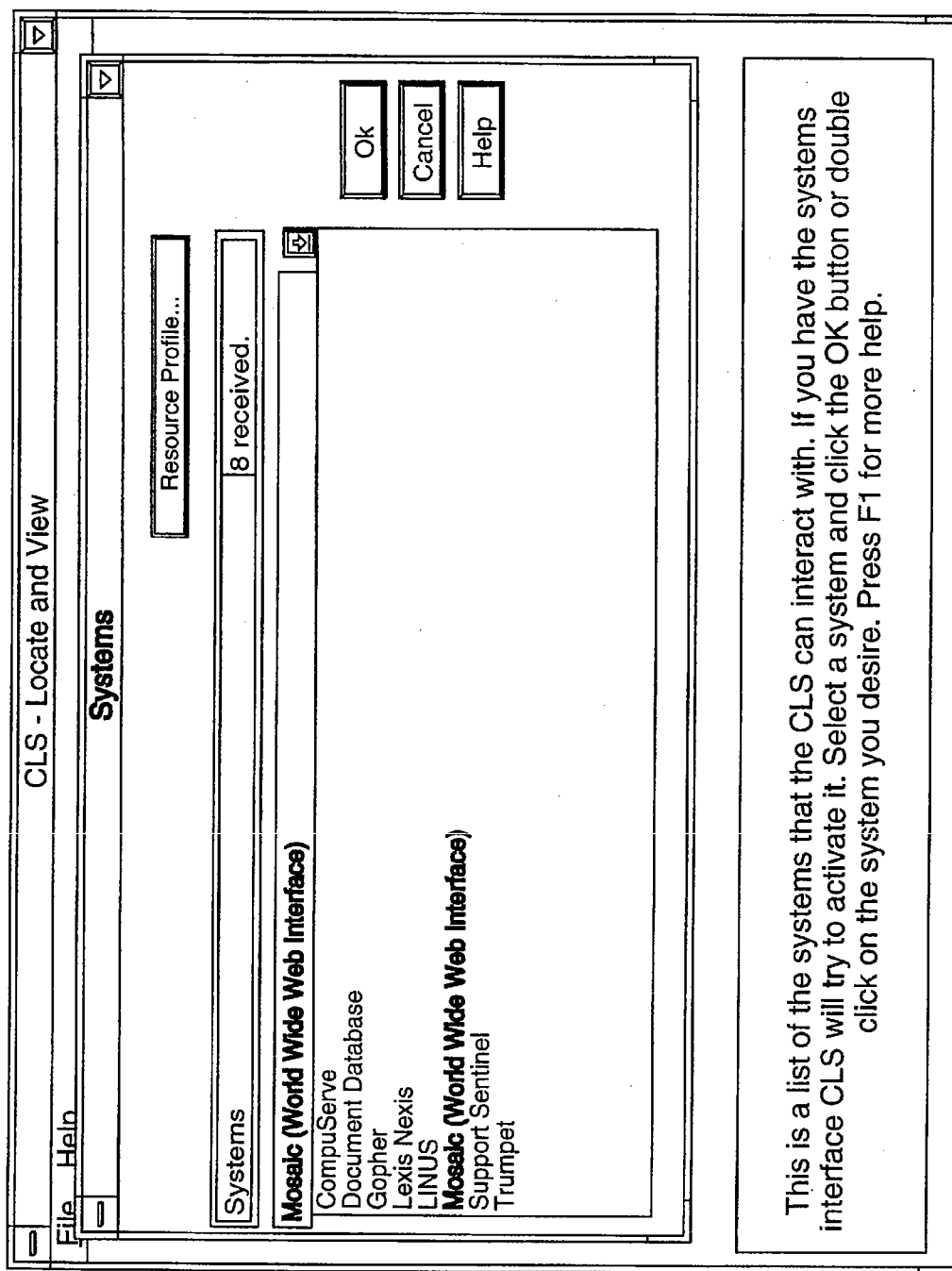


FIG. 36

FIG. 37

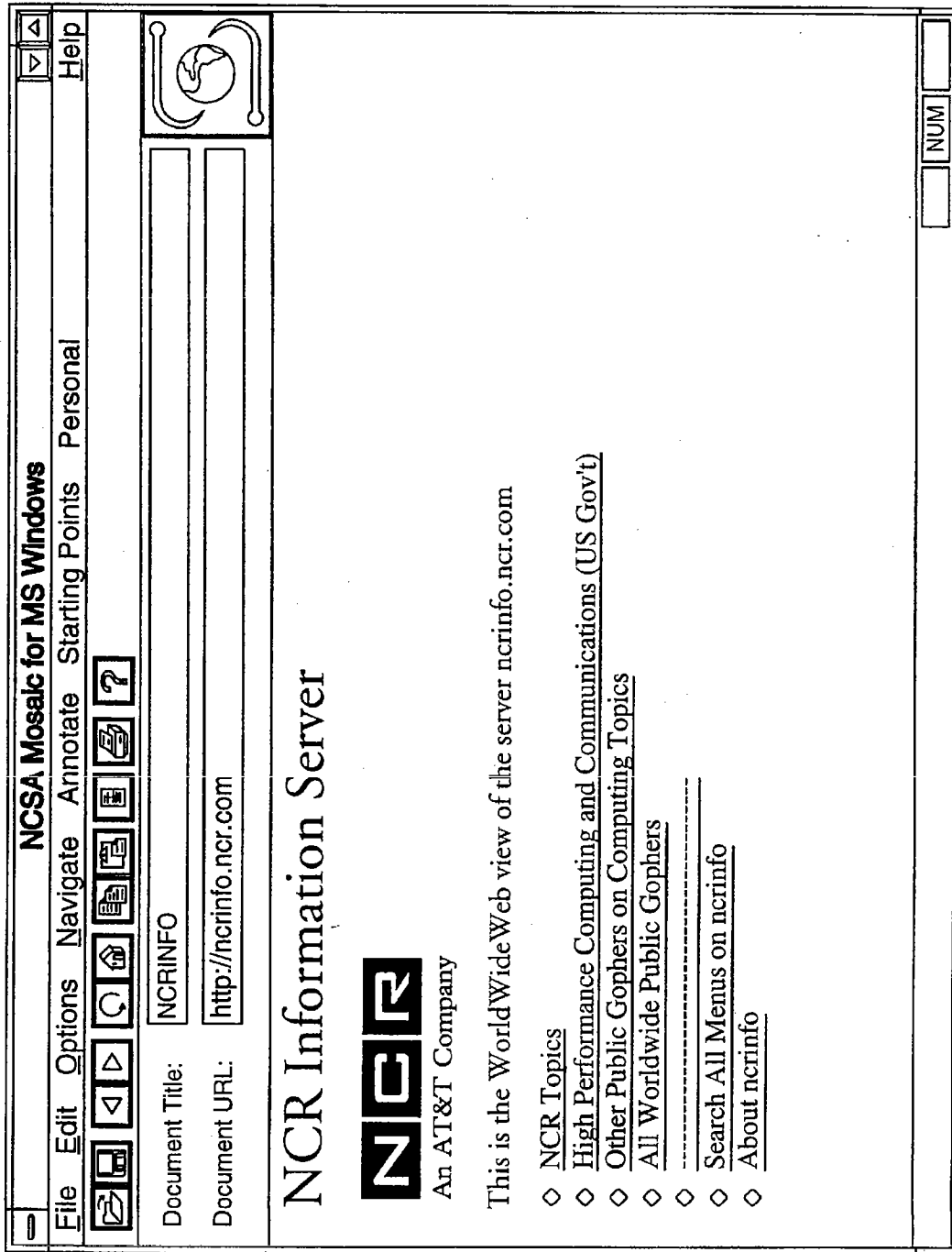


FIG. 38

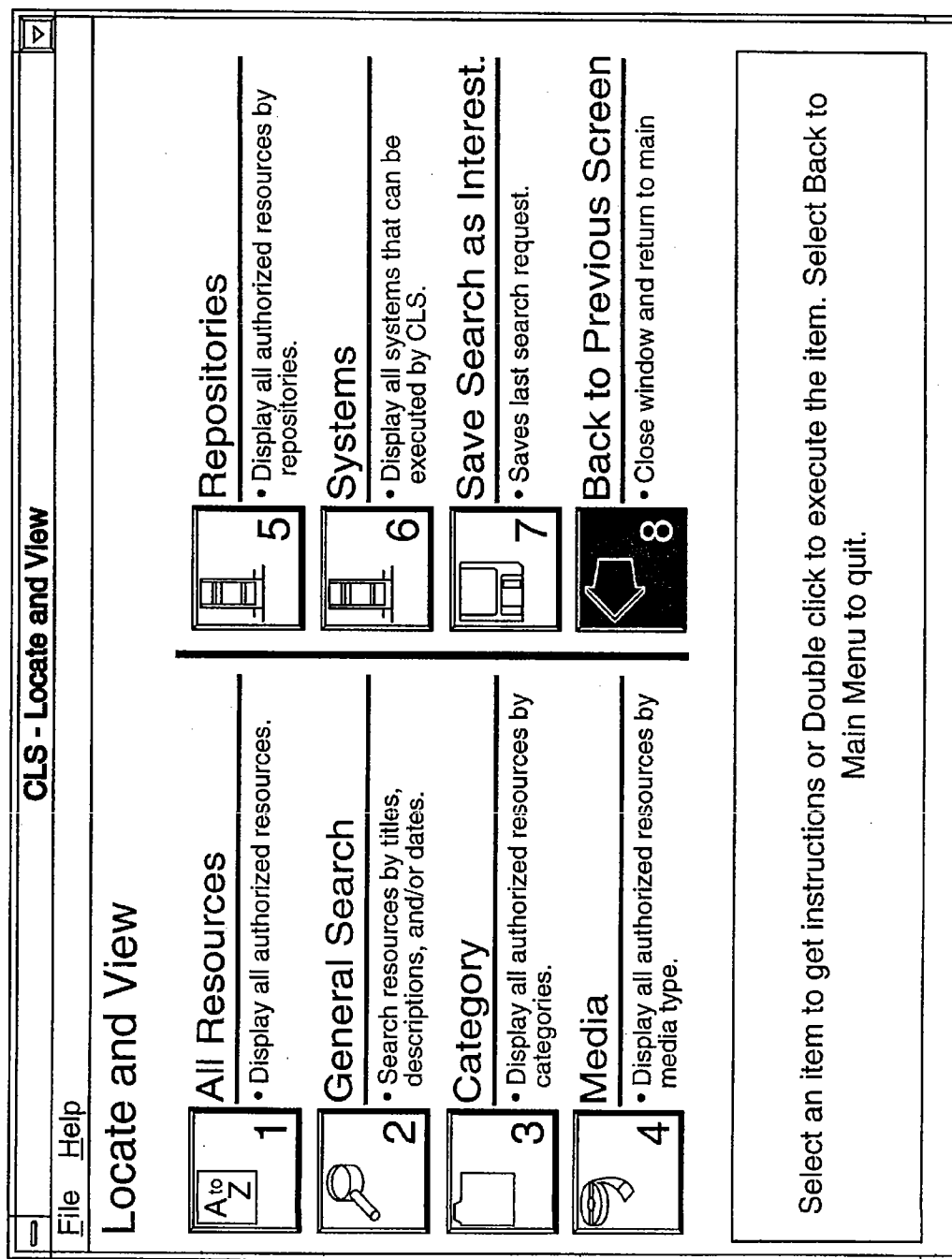


FIG. 39

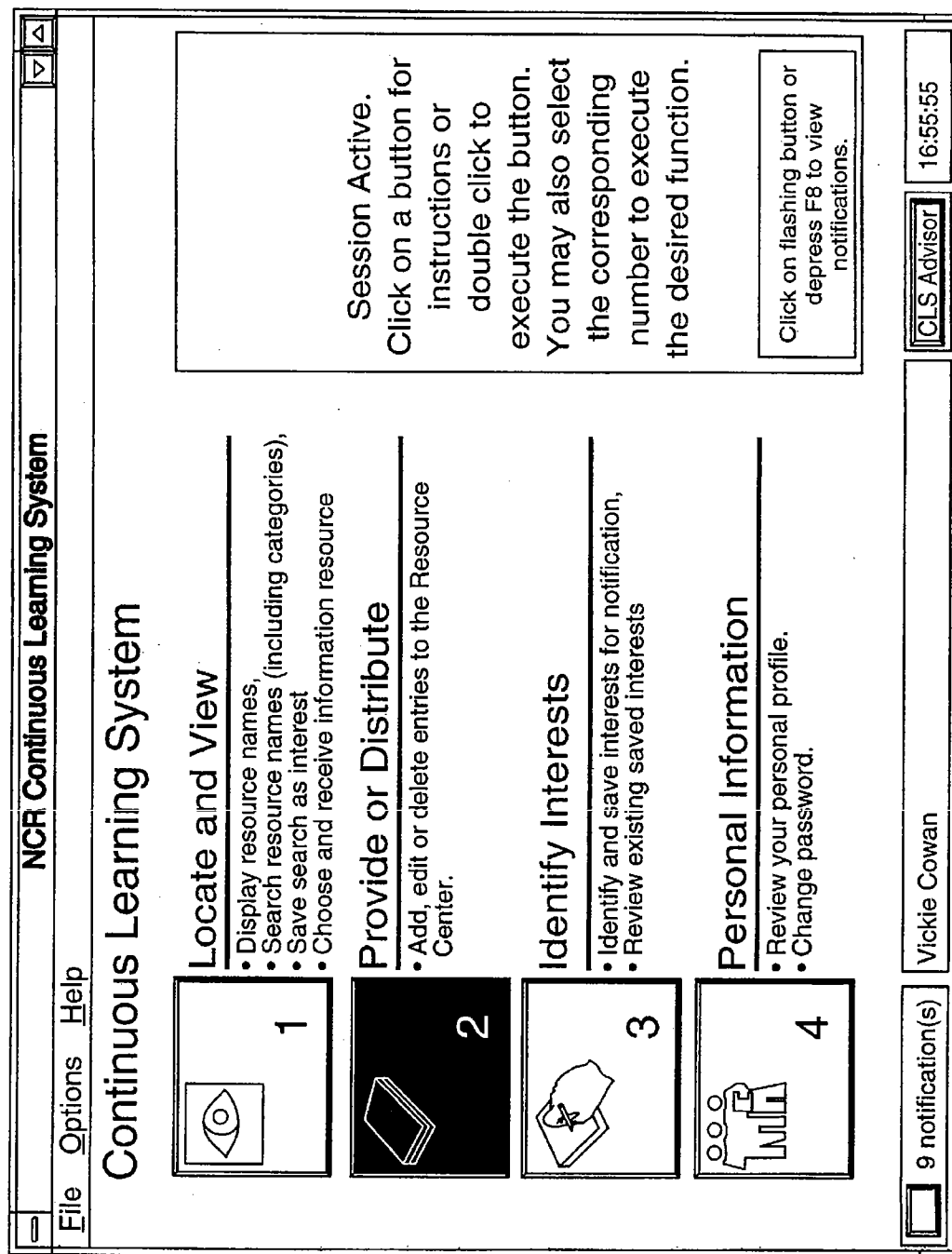


FIG. 40

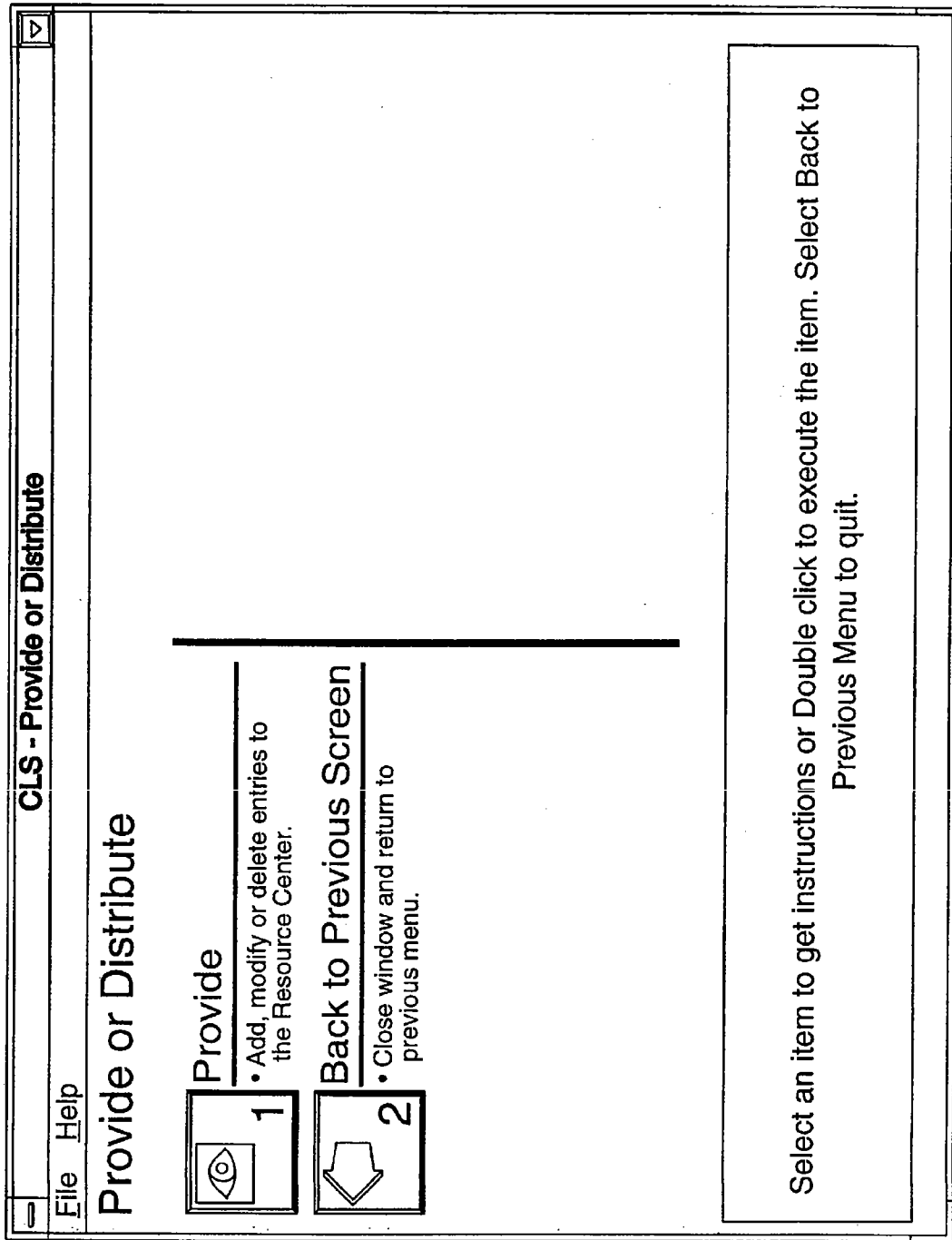


FIG. 41

The image shows a graphical user interface window titled "Resource Administration". At the top left, there is a menu bar with "File" and "Help" options. Below the menu bar, there are three checkboxes: "Public", "Organization", and "Team". The main area of the window contains several input fields and labels: "Resource Title:" followed by a text box; "Date Added:" followed by a date field showing "/ /"; "Product ID:" followed by a text box; "Cost:" followed by a text box; "Price:" followed by a text box; "Information Category:" followed by a dropdown menu; "Information Filename:" followed by a text box; "Repository:" followed by a text box; "Date Updated:" followed by a date field showing "/ /"; "Media:" followed by a dropdown menu; "Format:" followed by a dropdown menu; "Point of Contact:" followed by a dropdown menu; "Alternate Administrator:" followed by a dropdown menu; "Bitmap>>" followed by a button; "Resource Description:" followed by a large text area; and "Remarks" followed by a text box. At the bottom of the window, there is a button that says "Please select either New, Modify or Cancel." On the right side of the window, there are several buttons: "OK", "Cancel", "New", "Modify", "Delete", "Clear All", and "Help".

FIG. 42

File Help
Resource Administration

Public
 IPD only
 Team

Resource Title:

Date Added: / /

Date Updated: / /

Product ID:

Cost:

Price:

Information Category:

Information Filename:

Repository:

Resource Description:

Remarks:

Media:

Format:

Point of Contact:

Alternate Administrator:

Bitmap>>

Please enter new data at this time and click on OK.

FIG. 43

File Help Resource Administration

Public
 IPD only
 Team

Resource Title: _____

Date Added: _____ Date Updated: / /

Product ID: _____ Media: _____

Cost: _____ Format: _____

Price: _____ Point of Contact: _____

Information Category: _____ Alternate Administrator: _____

Information Filename: _____ **Bitmap>>**

Repository: _____

Resource Description: _____

Remarks: _____

Product
 Supplier
 Technology
Other
 Partnership
 CORE IP
 CLS-TEAM NOTES

Please enter new data at this time and click on OK.

FIG. 44

Resource Administration

File Help

Public
 IPD only
 Team

Resource Title:

Date Added: / / Date Updated: / /

Product ID:

Cost:

Price:

Information Category:

Information Filename:

Repository:

Resource Description:

Remarks:

Please enter new data at this time and click on OK.

FIG. 45

Resource Administration

File Help

Public
 IPD only
 Team

Resource Title: _____


Date Added: _____ Date Updated: / / _____

Product ID: _____ Media: _____

Cost: _____ Format: _____

Price: _____ Point of Contact: _____

Information Category: _____ Alternate Administrator: _____

Information Filename: _____ 

Repository: _____

Resource Description: _____

Remarks _____

Ok Cancel New Modify Delete Clear All Help

Please enter new data at this time and click on OK.

FIG. 46

Resource Administration

File Help

Access Level: Public IPD only Team

Resource Title:

Date Added:

Product ID:

Cost:

Price:

Information Category:

Information Filename:

Repository:

Resource Description:

Remarks:

Please enter new data at this time and click on OK.

File size: 0

Current Directory: C:\CLN\UPDATE

Dir List:

- [-a-]
- [-c-]
- [-m-]
- [-p-]
- [-s-]
- [..]

File names:

- cat.ico
- catatoz.ico
- clnsign.obr
- clnsign1.obr
- cls.ini
- cishelp.hlp
- cisnew.zip
- clsxfr.bat
- clsxfr.pif

Buttons: Ok, Cancel, New, Modify, Delete, Clear All, Help

FIG. 47

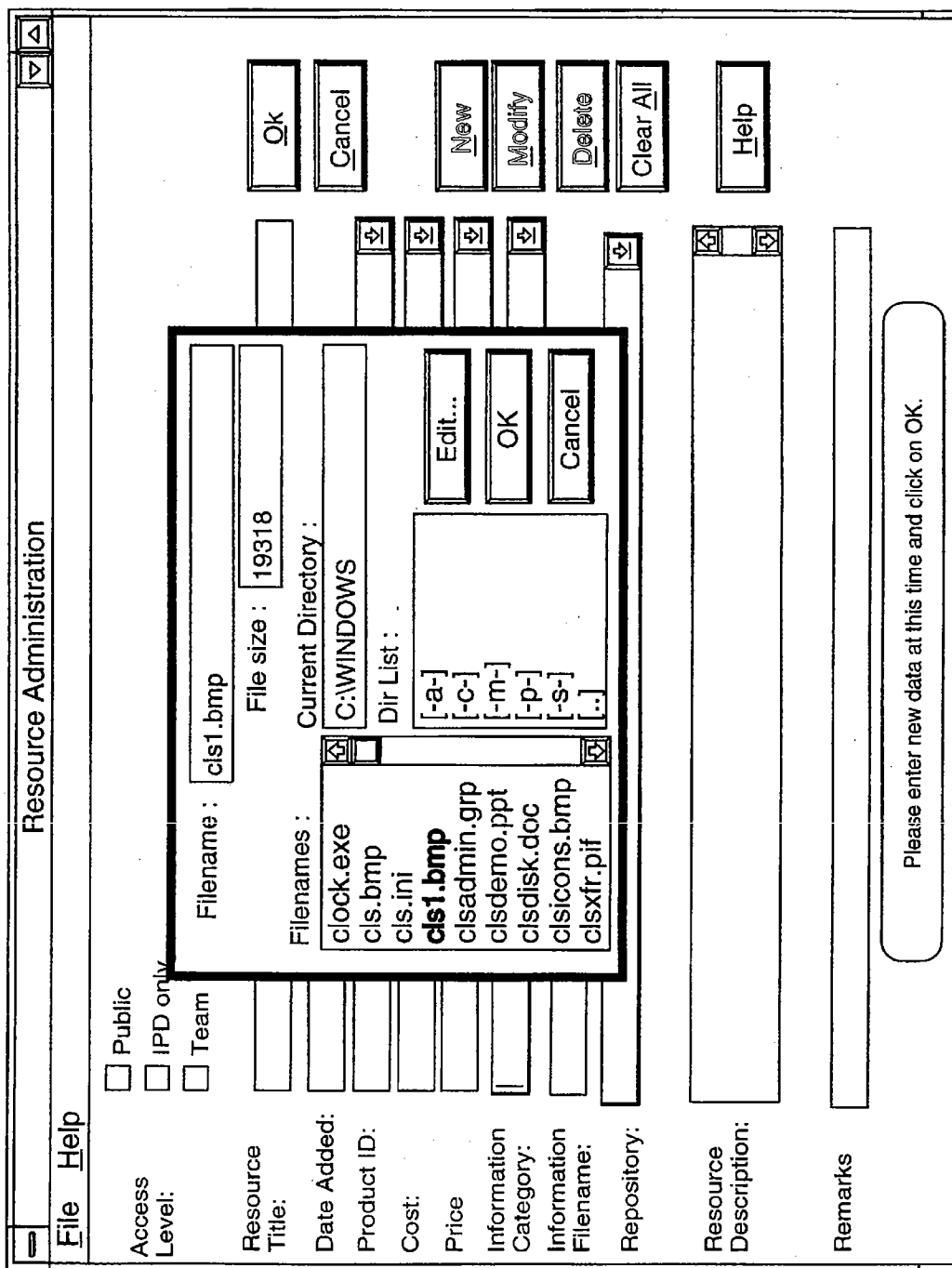


FIG. 48

Resource Administration
File Help

Access Level: Public IPD only Team

Resource Title:

Date Added: / / Date Updated: / /

Product ID:

Cost:

Price:

Information Category:

Information Filename:

Repository:

Resource Description:

Remarks:

Media:

Format:

Point of Contact:

Alternate Administrator:

Bitmap>>:

Please enter new data at this time and click on OK.

FIG. 49

Resource Administration

File Help

Access Level: Public IPD only Team

Resource Title:

Date Added: / / Date Updated: / /

Product ID:

Cost:

Price:

Information Category:

Information Filename:

Repository:

Resource Description:

Remarks:

Media:

Format:

Point of Contact:

Alternate Administrator:

Buttons:

Message: **CLS - TEST RESOURCE FOR TRAINING was successfully added to the CLS database.**