

United States District Court
For the Northern District of California

1
2
3
4
5
6
7
8
9
10
11
12
13
14
15
16
17
18
19
20
21
22
23
24
25
26
27
28

IN THE UNITED STATES DISTRICT COURT
FOR THE NORTHERN DISTRICT OF CALIFORNIA

CLAUDE BRYANT, et al.,
Plaintiffs,

No. C 08-1190 SI
Related Case: No. C 08-1184 SI

v.

**ORDER TO SHOW CAUSE WHY
ORGANIZATIONAL CHART SHOULD
NOT BE FILED WITHOUT SEAL**

SERVICE CORPORATION
INTERNATIONAL, et al.,
Defendants.

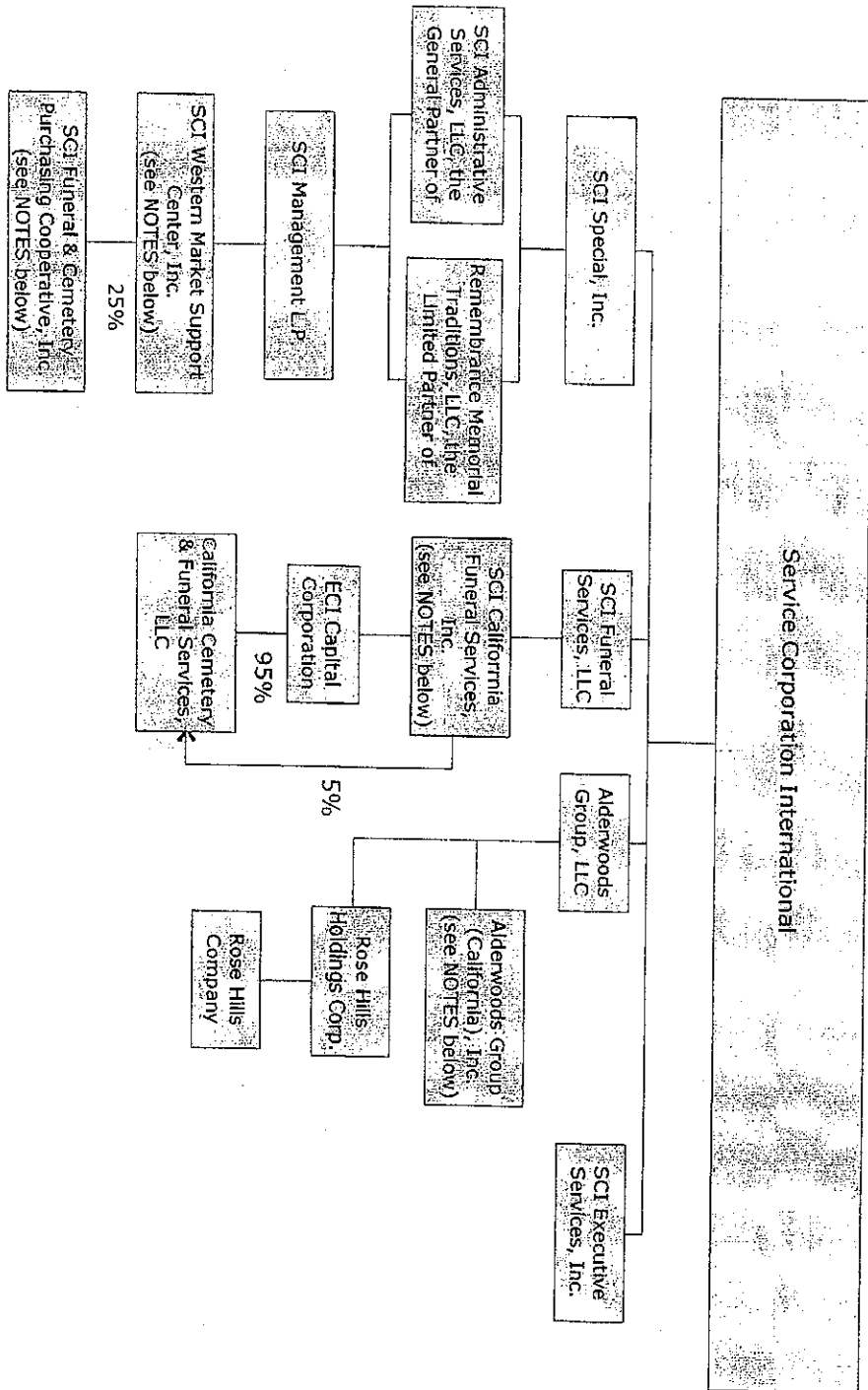
After the May 29, 2009 hearing on defendants' motion to dismiss for lack of personal jurisdiction, defense counsel provided five charts to assist the Court in understanding the corporate structure of defendant Service Corporation International. Counsel explained in a letter dated June 4 that four of the charts (bates numbered SCI (BRY) 00411-14) have been produced to plaintiffs in discovery and that counsel prepared the fifth chart (which does not have a bates number) for the Court after the May 29 hearing. Defense counsel request that if the fifth chart is made part of the record in this case, it be filed under seal. The Court finds that the fifth chart should be included in the record. It is not evident to the Court, however, why it should be filed under seal. **Defense counsel shall file a declaration within five days of the filing of this order explaining why this document should not be filed in the public record.** If defense counsel opts not to file a declaration, the Court shall direct the clerk to file and docket the fifth chart on the public docket.

IT IS SO ORDERED.

Dated: July 27, 2009

Susan Illston

SUSAN ILLSTON
United States District Judge



NOTES:

- SCI Funeral & Cemetery Purchasing Cooperative, Inc. provides administrative and consulting services to SCI Western Market Support Center, Inc. through a Management Services Agreement
- SCI Western Market Support Center, Inc. provides administrative and consulting services to SCI California Funeral Services, Inc. and Alderwoods Group (California), Inc. through a Management Services Agreement.