

# Exhibit B

Registered No.

RR79527271016

Date Stamp

To Be Completed By Post Office	Reg. Fee \$	11.75	Return \$	2.35
	Handling Charge \$	0.00	Receipt	2.35
	Postage \$	8.12	Restricted \$	0.00
			Delivery	
Received by <i>Darcy Carroll</i>				



Domestic insurance up to \$25,000 is included in the fee. International indemnity is limited. (See Reverse).

Customer Must Declare Full Value \$ 0.00

With Postal Insurance  
 Without Postal Insurance

To Be Completed By Customer  
(Please Print)  
All Entries Must Be in Ballpoint or Typed

FROM	Attn: <i>K. Trevisan</i>
	Ref #: <i>38914-509</i>
	WILSON, SONSINI, GOODRICH & ROSATI
	601 California Avenue Palo Alto, California 94304
TO	<i>JL4 Web Solutions</i>
	<i>37 Tarhata St, Urduja Village</i>
	<i>Novaishe, Caloccan City PHILIPPINES</i>

PS Form 3806,  
June 2002

Receipt for Registered Mail

Copy 1 - Customer  
(See Information on Reverse)

For delivery information, visit our website at [www.usps.com](http://www.usps.com)®

[English](#)

[Customer Service](#)

[USPS Mobile](#)

[Register / Sign In](#)



[Search USPS.com or Track Packages](#)

[Quick Tools](#)

[Ship a Package](#)

[Send Mail](#)

[Manage Your Mail](#)

[Shop](#)

[Business Solutions](#)

## Track & Confirm

You entered: RR795278710US

**Status: Processed Through Sort Facility**

Your item was processed through our facility on April 13, 2012 at 7:56 pm. The item is currently in transit to the destination. Additional information for this item is stored in files offline.

You may request that the additional information be retrieved from the archives, and that we send you an e-mail when this retrieval is complete. Requests to retrieve additional information are generally processed within four hours. This information will remain online for 30 days.

I would like to receive notification on this request

[Restore](#)

### Find Another Item

What's your label (or receipt) number?

[Find](#)

#### LEGAL

- [Privacy Policy >](#)
- [Terms of Use >](#)
- [FOIA >](#)
- [No FEAR Act EEO Data >](#)

#### ON USPS.COM

- [Government Services >](#)
- [Buy Stamps & Shop >](#)
- [Print a Label with Postage >](#)
- [Customer Service >](#)
- [Site Index >](#)

#### ON ABOUT.USPS.COM

- [About USPS Home >](#)
- [Newsroom >](#)
- [Mail Service Updates >](#)
- [Forms & Publications >](#)
- [Careers >](#)

#### OTHER USPS SITES

- [Business Customer Gateway >](#)
- [Postal Inspectors >](#)
- [Inspector General >](#)
- [Postal Explorer >](#)

Copyright© 2012 USPS. All Rights Reserved.

Registered No. **RR795 278737 45**

Date Stamp

To Be Completed By Post Office	Reg. Fee \$	11.75	
	Handling Charge	\$	
	Postage \$	11.75	
	Received by	\$0.00	
			\$2.35

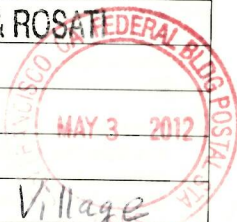
0045

09  
Domestic Insurance up to \$25,000 is included in the fee. International indemnity is limited. (See Reverse).

Customer Must Declare Full Value \$ 17.72  With Postal Insurance  Without Postal Insurance

To Be Completed By Customer (Please Print) All Entries Must Be in Ballpoint or Typed

FROM	Attn: <u>K. Trevisan</u>
	Ref.#: <u>38914-509</u>
	<u>WILSON, SONSINI, GOODRICH &amp; ROSATI</u>
	<u>601 California Avenue</u>
	<u>Palo Alto, California 94304</u>
TO	<u>JL4 Web Solutions</u>
	<u>37 Tarhata St, Urduja Village</u>
	<u>Novaiche, Calocan City, PHILIPPINES</u>



PS Form 3806, PH ~~Registered Mail~~ Registered Mail June 2002 Copy 1 - Customer (See Information on Reverse)

For delivery information, visit our website at [www.usps.com](http://www.usps.com)®

[English](#)

[Customer Service](#)

[USPS Mobile](#)

[Register / Sign In](#)



[Search USPS.com or Track Packages](#)

[Quick Tools](#)

[Ship a Package](#)

[Send Mail](#)

[Manage Your Mail](#)

[Shop](#)

[Business Solutions](#)

# Track & Confirm

[GET EMAIL UPDATES](#)   [PRINT DETAILS](#)

YOUR LABEL NUMBER	SERVICE	STATUS OF YOUR ITEM	DATE & TIME	LOCATION	FEATURES
RR795278737US	First-Class Mail International	Processed Through Sort Facility	May 07, 2012, 4:26 pm	ISC SAN FRANCISCO (USPS)	Registered Mail™ Return Receipt
		Arrived at Sort Facility	May 07, 2012, 4:22 pm	ISC SAN FRANCISCO (USPS)	
		Processed Through Sort Facility	May 07, 2012, 4:16 pm	ISC SAN FRANCISCO (USPS)	
		Arrived at Sort Facility	May 06, 2012, 10:12 pm	ISC SAN FRANCISCO (USPS)	
		Depart USPS Sort Facility	May 03, 2012	SAN FRANCISCO, CA 94188	
		Processed at USPS Origin Sort Facility	May 03, 2012, 3:38 pm	SAN FRANCISCO, CA 94188	
		Acceptance	May 03, 2012, 9:58 am	SAN FRANCISCO, CA 94102	

### Check on Another Item

What's your label (or receipt) number?

#### LEGAL

- [Privacy Policy](#) ›
- [Terms of Use](#) ›
- [FOIA](#) ›
- [No FEAR Act EEO Data](#) ›

#### ON USPS.COM

- [Government Services](#) ›
- [Buy Stamps & Shop](#) ›
- [Print a Label with Postage](#) ›
- [Customer Service](#) ›
- [Site Index](#) ›

#### ON ABOUT.USPS.COM

- [About USPS Home](#) ›
- [Newsroom](#) ›
- [Mail Service Updates](#) ›
- [Forms & Publications](#) ›
- [Careers](#) ›

#### OTHER USPS SITES

- [Business Customer Gateway](#) ›
- [Postal Inspectors](#) ›
- [Inspector General](#) ›
- [Postal Explorer](#) ›

Copyright© 2012 USPS. All Rights Reserved.