

EXHIBIT 13

Samsung Galaxy Tab 10.1 Take-Apart

iPad PD - 5/24/2011

Key Features

Enclosure Type	Molded plastic back and sides, glass screen, Magnesium Chassis
Display Details	1280 x 8000 WXGA 10.1" 1080p PLS
Dimensions	256.2 x 172.9 x 8.6 mm
Weight	595g
Battery	3.7V Li-ion, 25.90Wh / 7000 mAh
Storage Size	16/32 GB
Physical I/O	proprietary connector similar to Apple 30-pin
Wireless	802.11 a/b/g/n with dual antennas
Camera Details	3MP Rear / 2MP Front
Feedback	Linear Vibe Motor

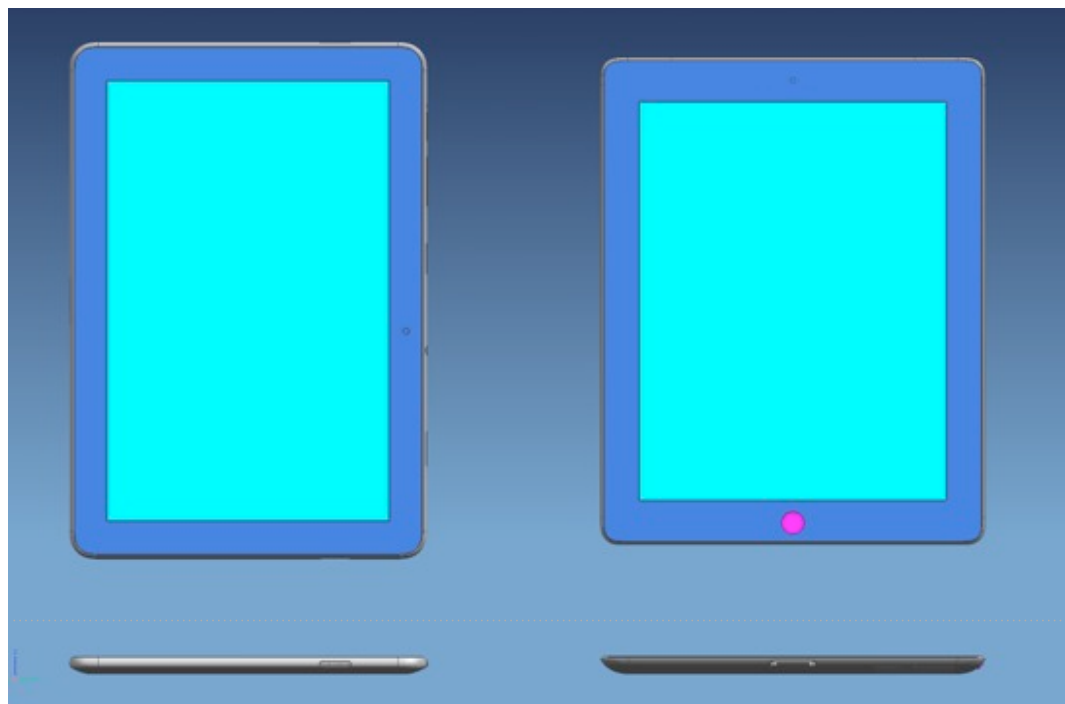


2/11/2012

iPod PD - Apple Confidential

Saturday, February 11, 2012

Samsung Galaxy Tab 10.1 vs iPad 2 Spec Comparison



Samsung Galaxy 10.1

256.2 x 172.9 x 8.6mm

595 g

10.1"

1280 x 800

16/32 GB

7000 mAh

4G (HSPA+)

802.11 a/b/g/n

K93/4/5

241.2 x 185.7 x 8.8mm

601 - 613g

9.7"

1024 x 768

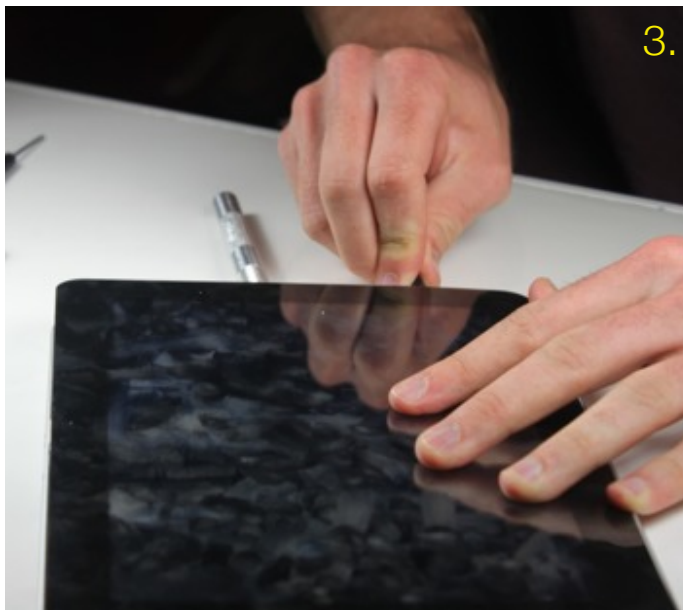
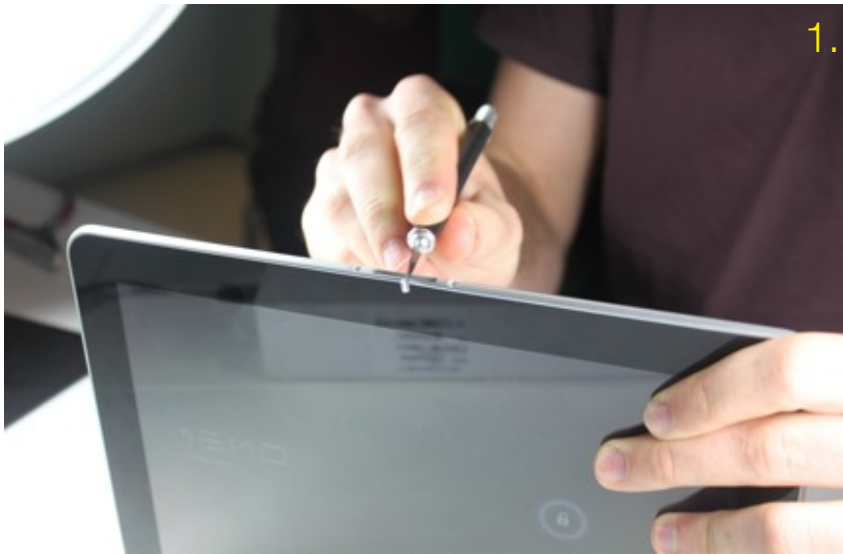
16/32/64 GB

6570 mAh

3G

802.11a/b/g/n

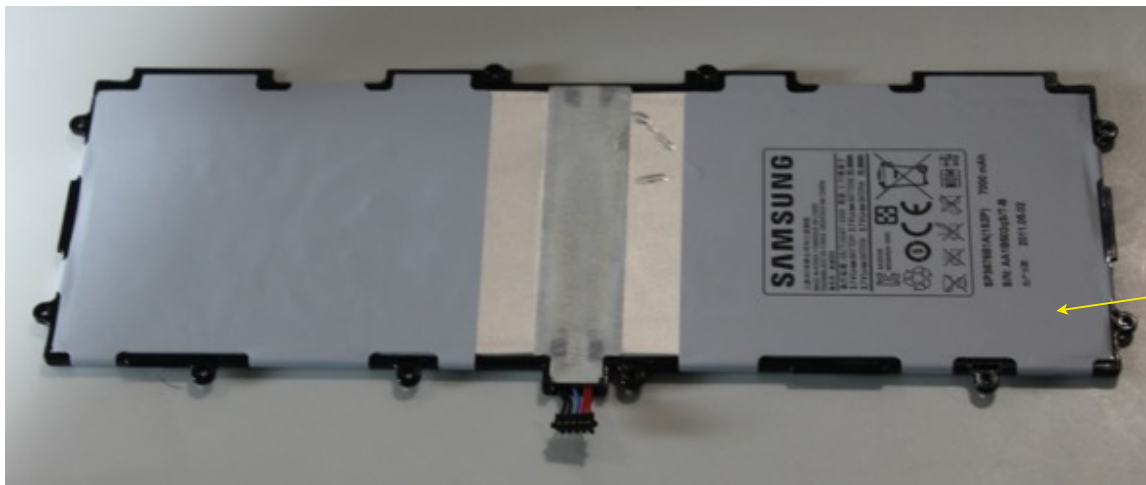
Product Disassembly



1. Silver caps are glued to screw tops.
2. Two screws secure cover to chassis.
3. Cover unsnaps from chassis.
4. Cover can now be removed.

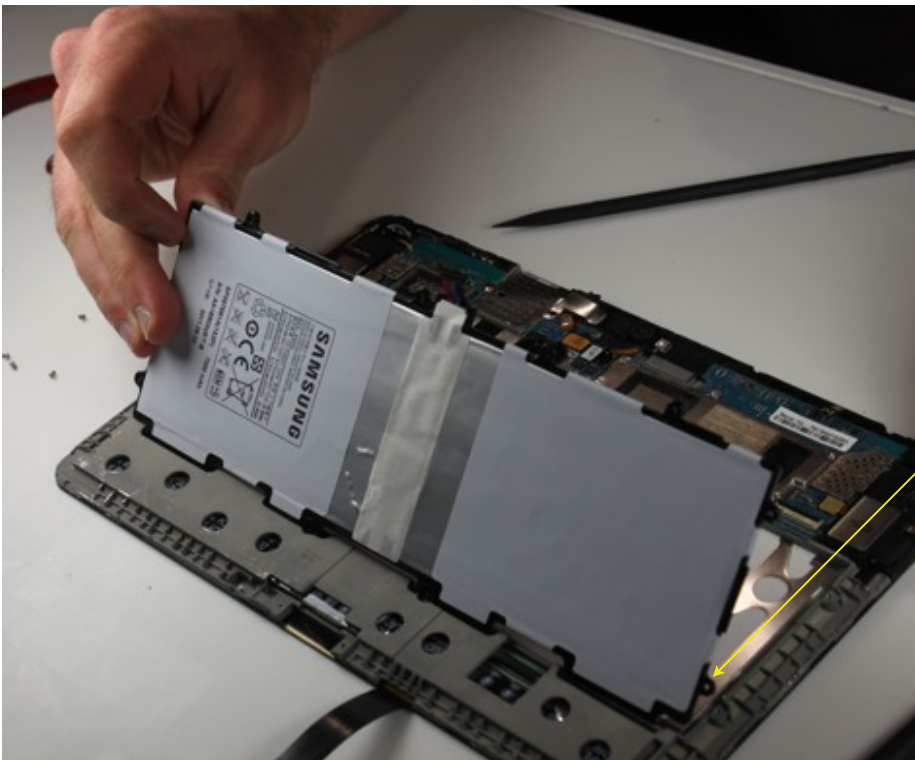


Battery Removal



Battery is taped to a plastic carrier.

Label cells, BMU, 6pin connector



The plastic carrier is screwed to the chassis.

Number of screws, interesting things about their position?

2/11/2012

iPhone PD - Apple Confidential

Saturday, February 11, 2012

Galaxy tab critical z-stack

Flex (0.10)

Plastic Back (1.1)

Battery holder (3.45)

Total Thickness: 8.6mm

Show DG as 0.2mm, list total air gap
of 0.3mm, flip 180deg so that glass is
on top.

M-chassis (0.19)

Reflector (0.18)

Film 2 (0.07)

Film 3 (0.05)

BEF (0.15)

Light Guide (0.79)

Polarizer (0.20)

TFT (0.25)

CF (0.25)

Polarizer (0.20)

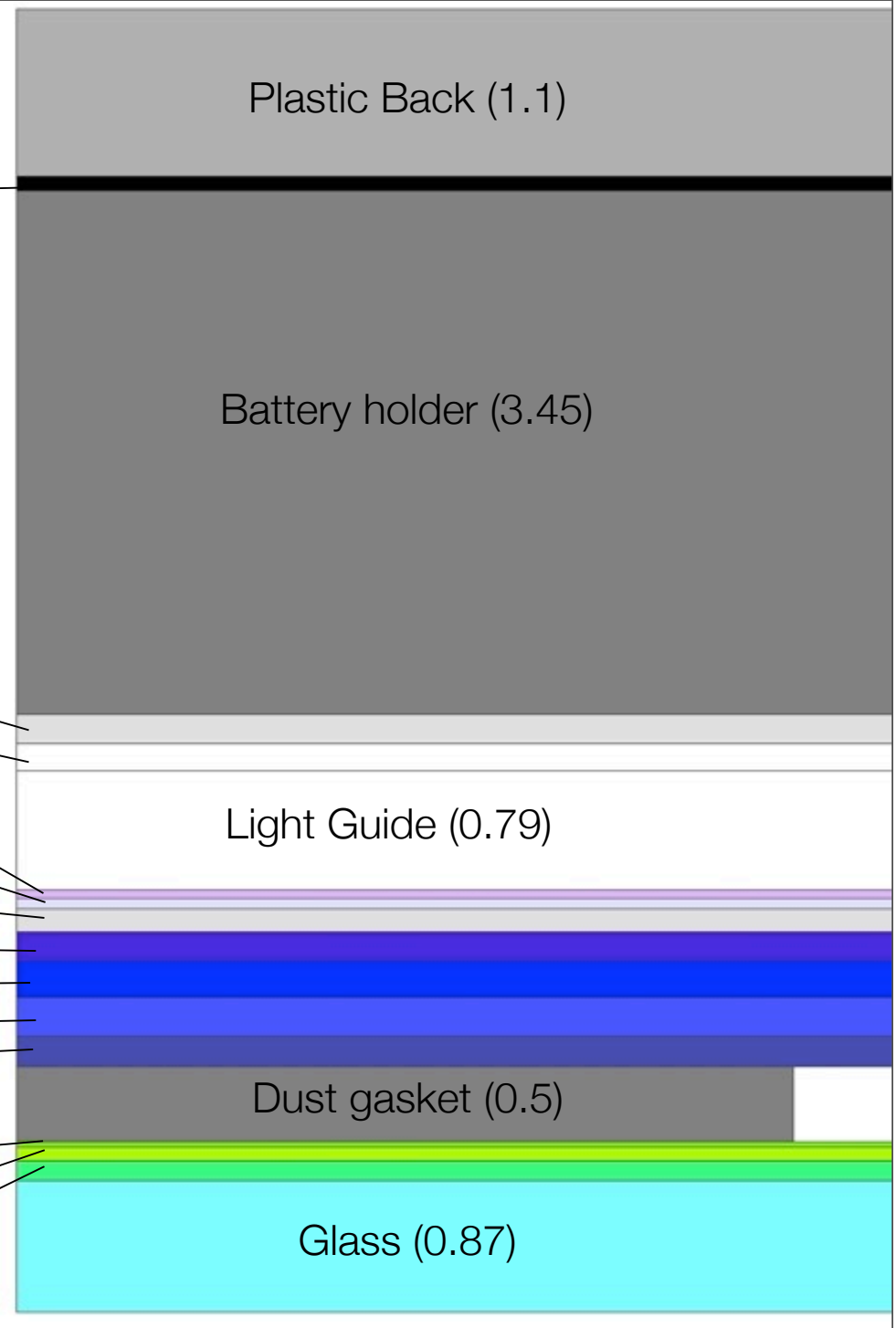
Dust gasket (0.5)

AR Layer (0.03)

Ditto Layer 2 (0.09)

Ditto Layer 1 (0.13)

Glass (0.87)



Saturday, February 11, 2012

K93 vs Galaxy Tab critical stack

Ask Raff for K94 critical stack

Comparison of LCD stackup to K93

K93 battery specs vs Galaxy Tab battery specs

	Galaxy Tab	K9x
Thickness	3.5	2.83
Length	78.3	115
Width	232.1	197.5
Capacity	7000	6570

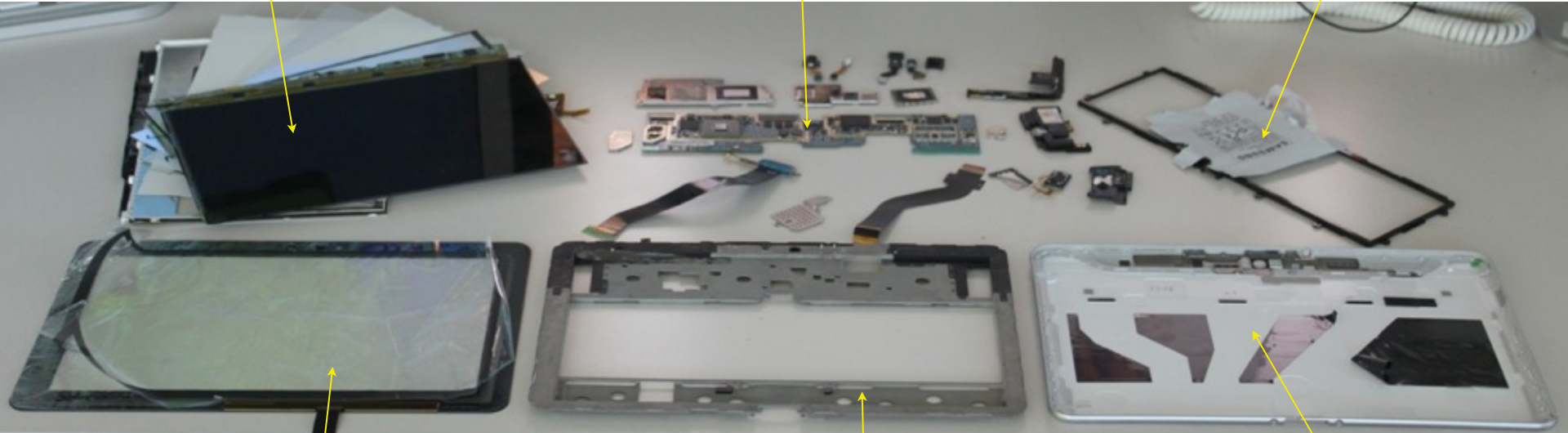
add pictures of batteries

Galaxy Tab 10.1 | Component Overview

LCD

MLB

Battery Module

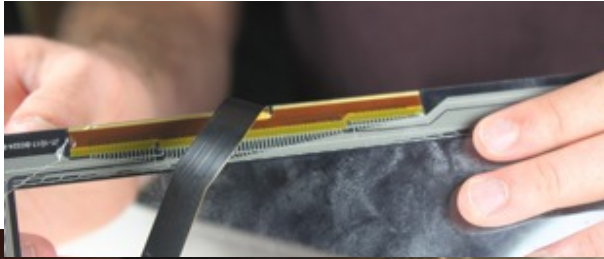


Glass, Grape, AR Film

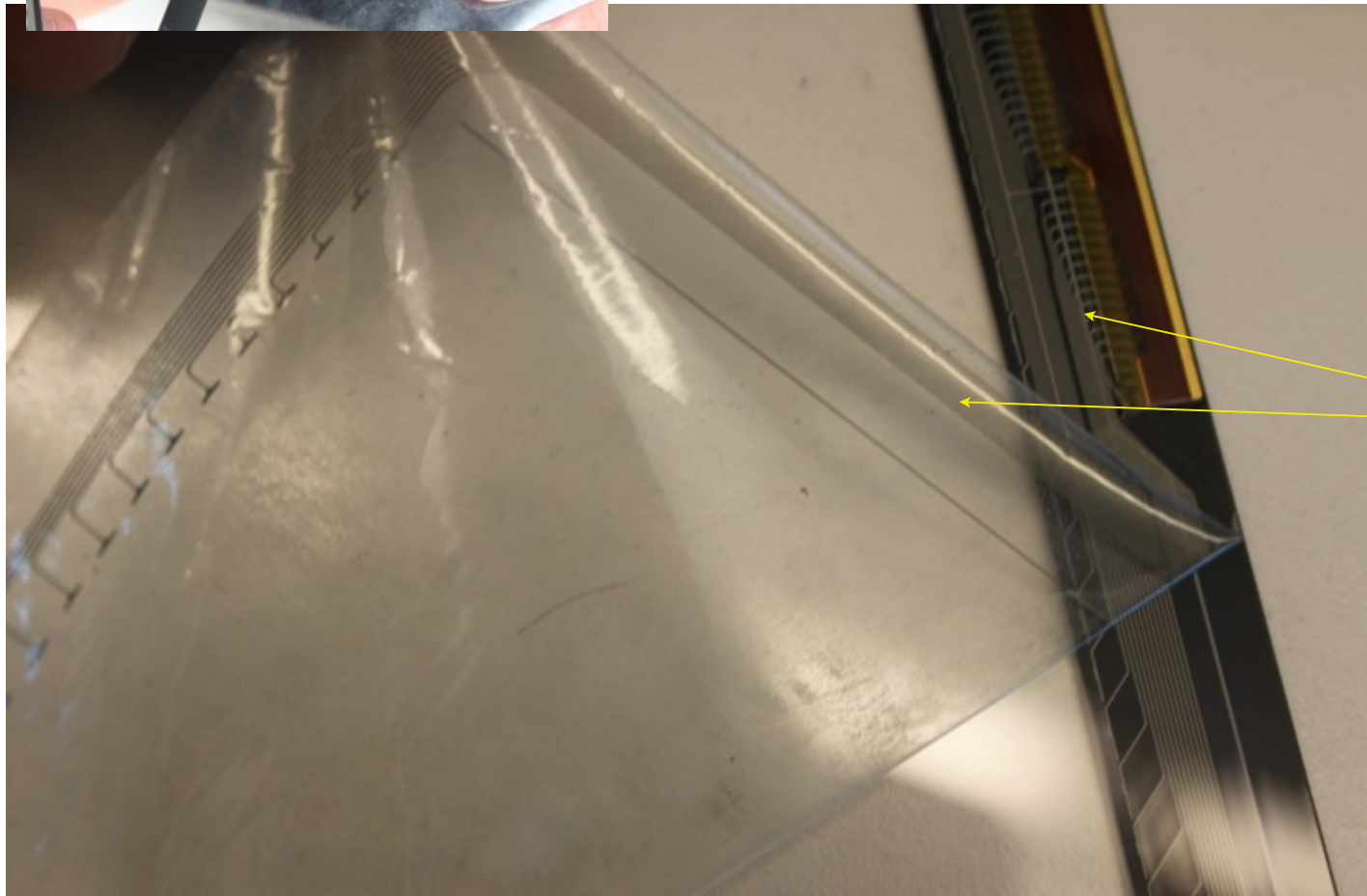
Mag Chassis

Back Cover

Interesting Features- Two Layer Plastic Ditto



One layer has X-axis sensing, the other has Y-axis sensing.



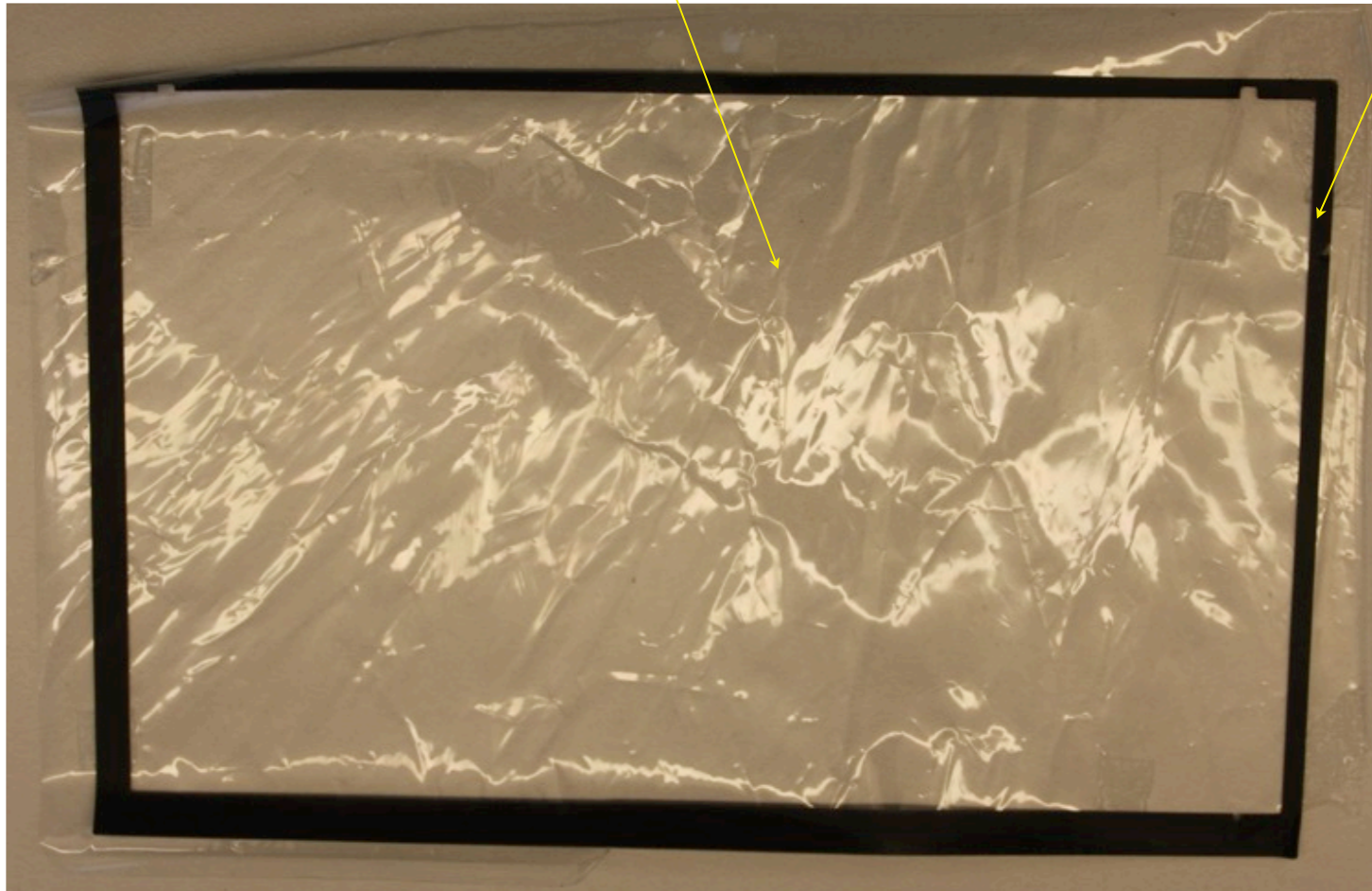
Ditto thickness?

Traces from both layers extend into flex

0.03mm AR Film, One piece Dust Gasket

Although thin, this layer is surprisingly strong

Single piece dust gasket

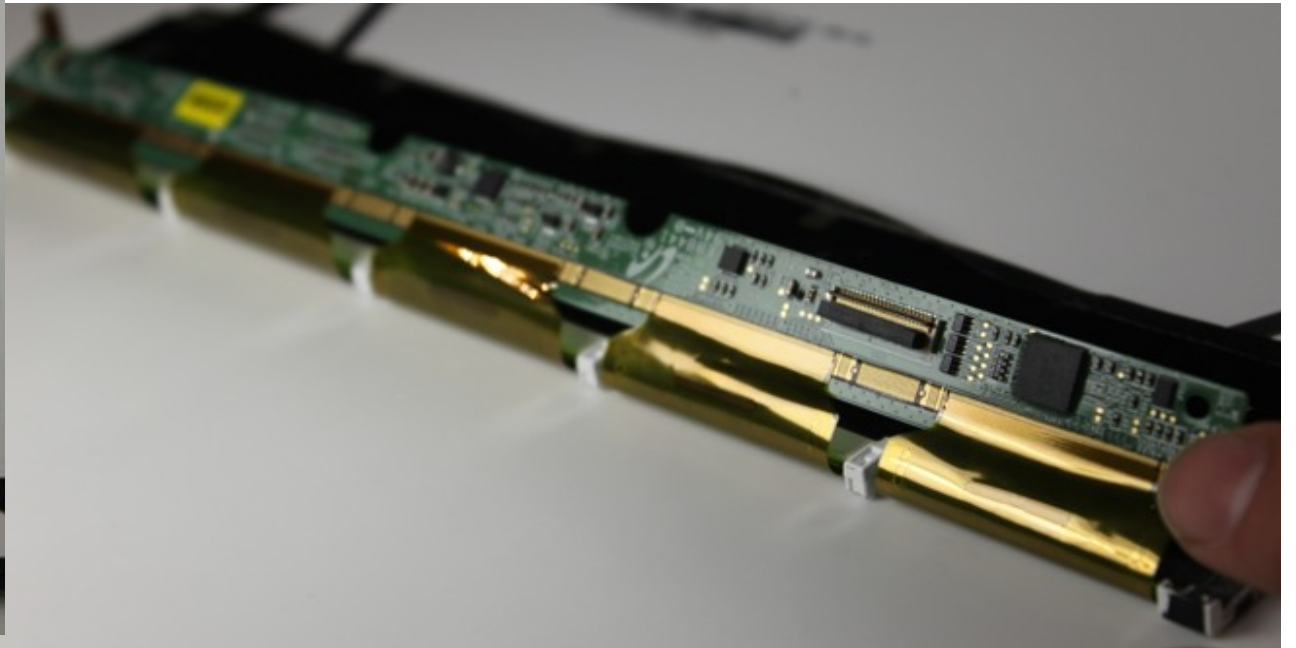
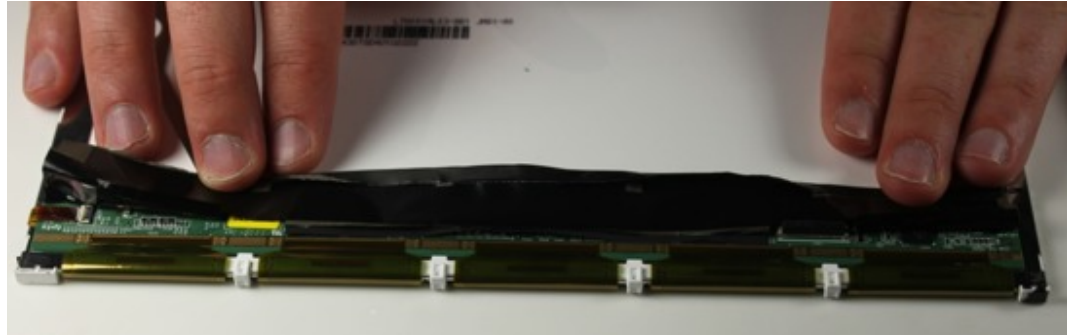
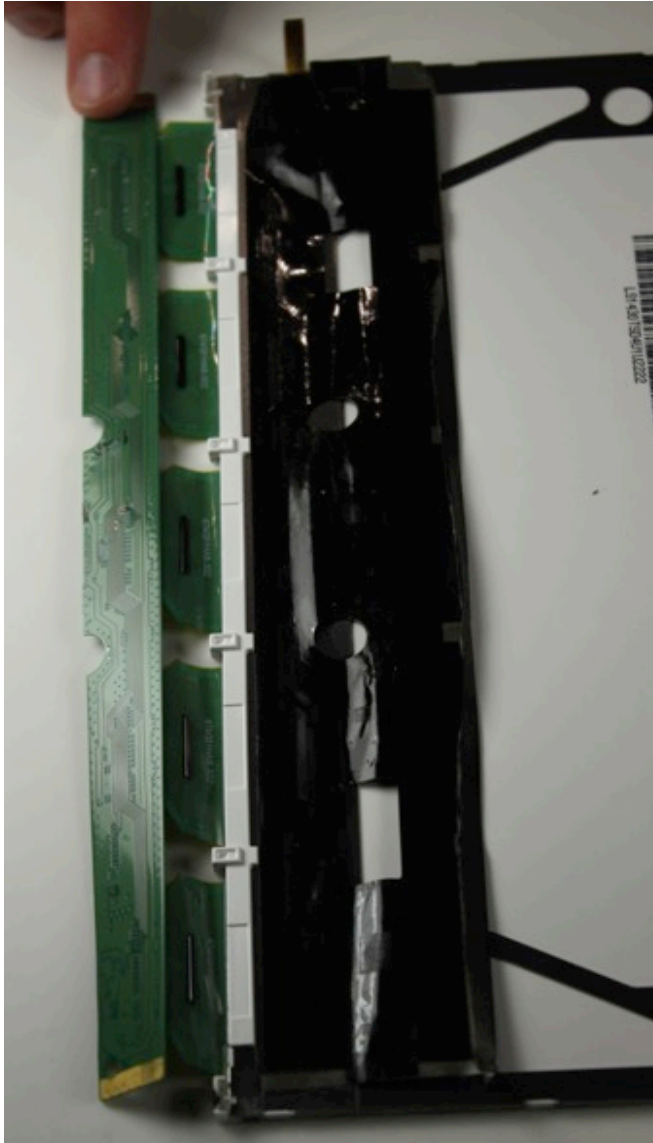


thickness?

How far is the DG
from the active area?

Board on flex, similar to desktops

Comments needed from Derek



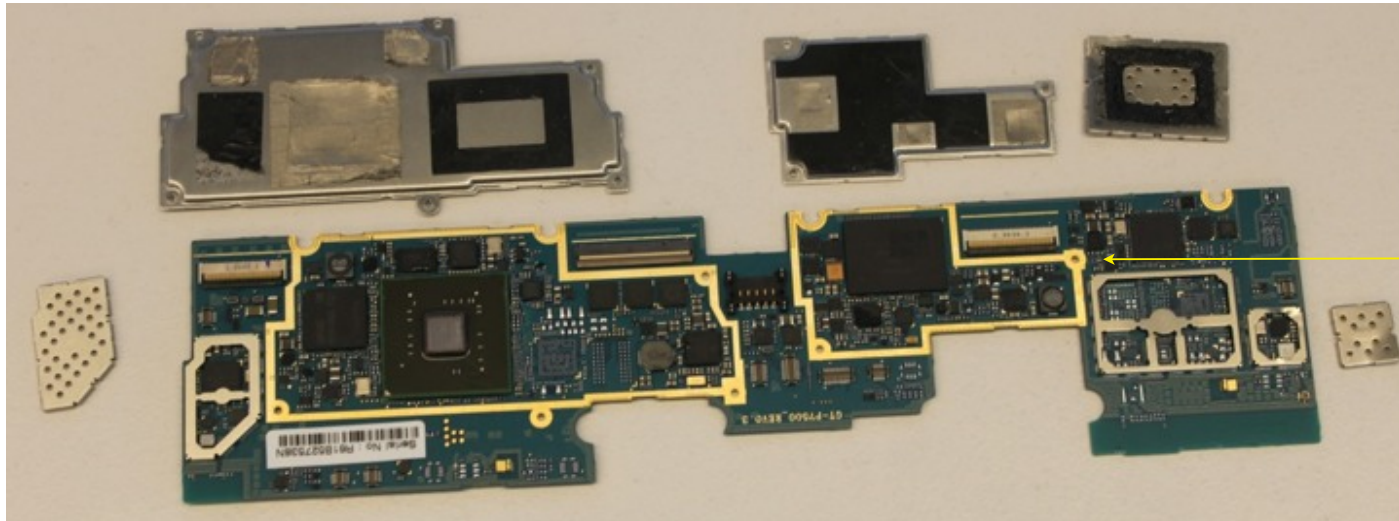
2/11/2012

iPod PD - Apple Confidential

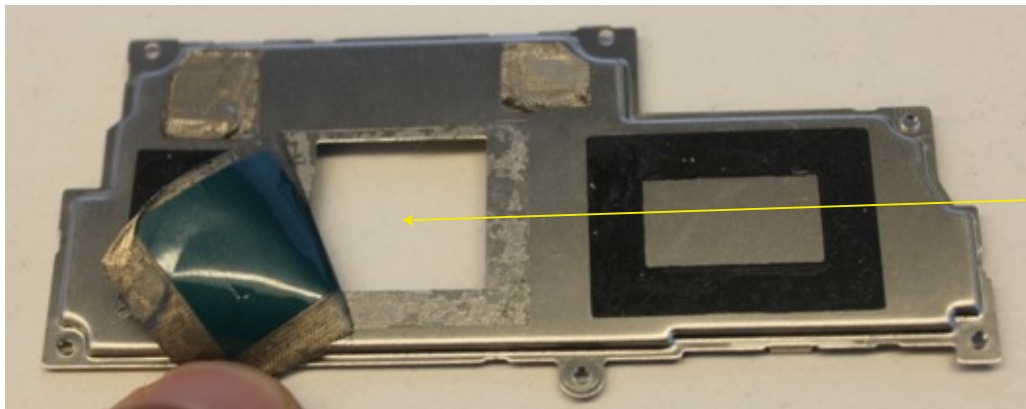
Saturday, February 11, 2012

Screw down cans with conductive tape

Comments needed from Alex



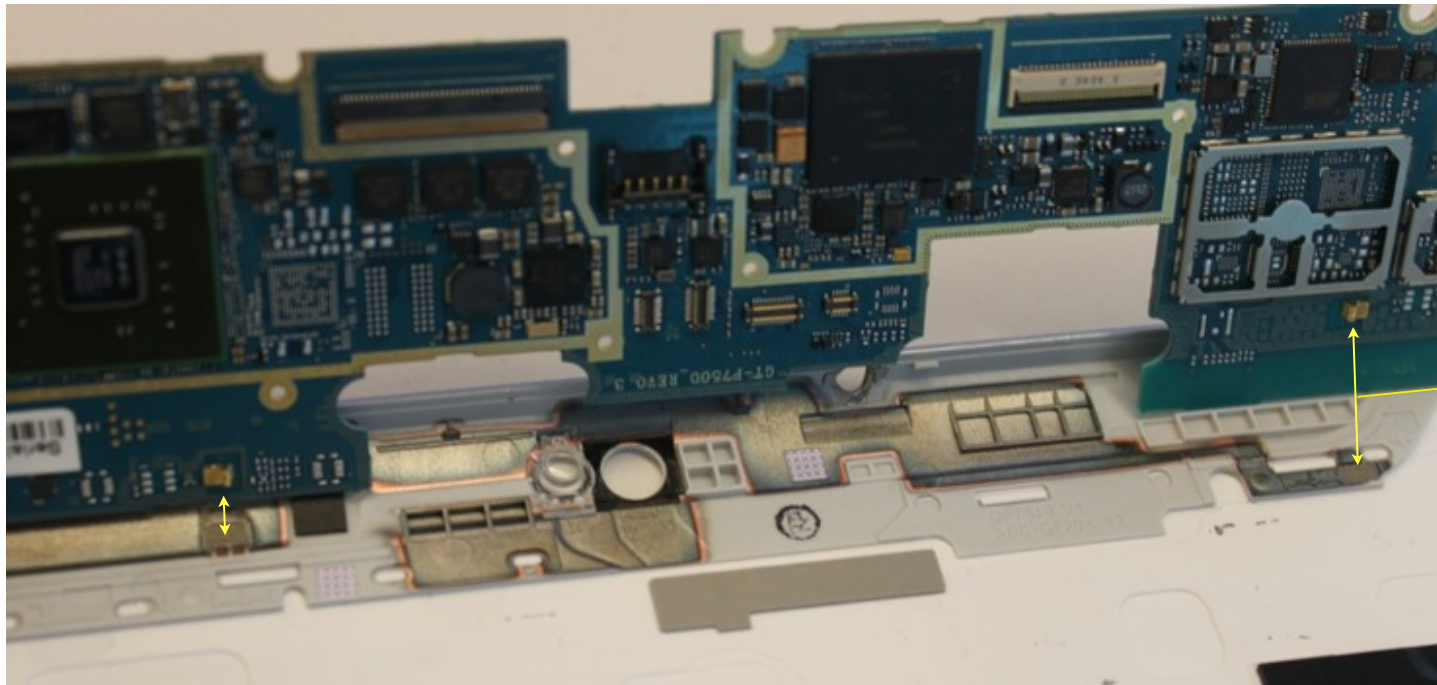
Cans screw to MLB, no fence required.



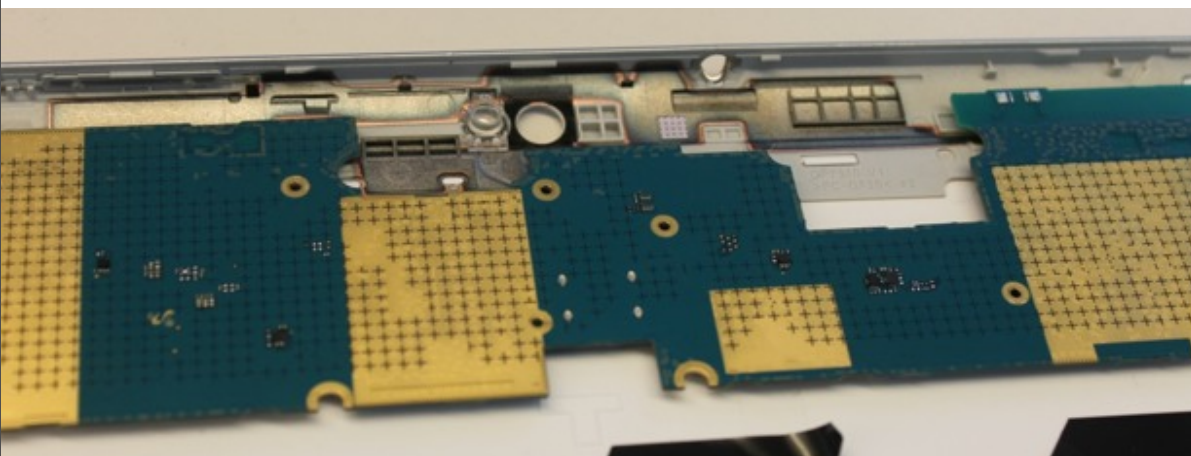
Conductive tape blocks EMI, peels away for rework

Antenna integrated with cover

Comments needed from Erik



push pins form connection with metallized portion of cover, used as an antenna



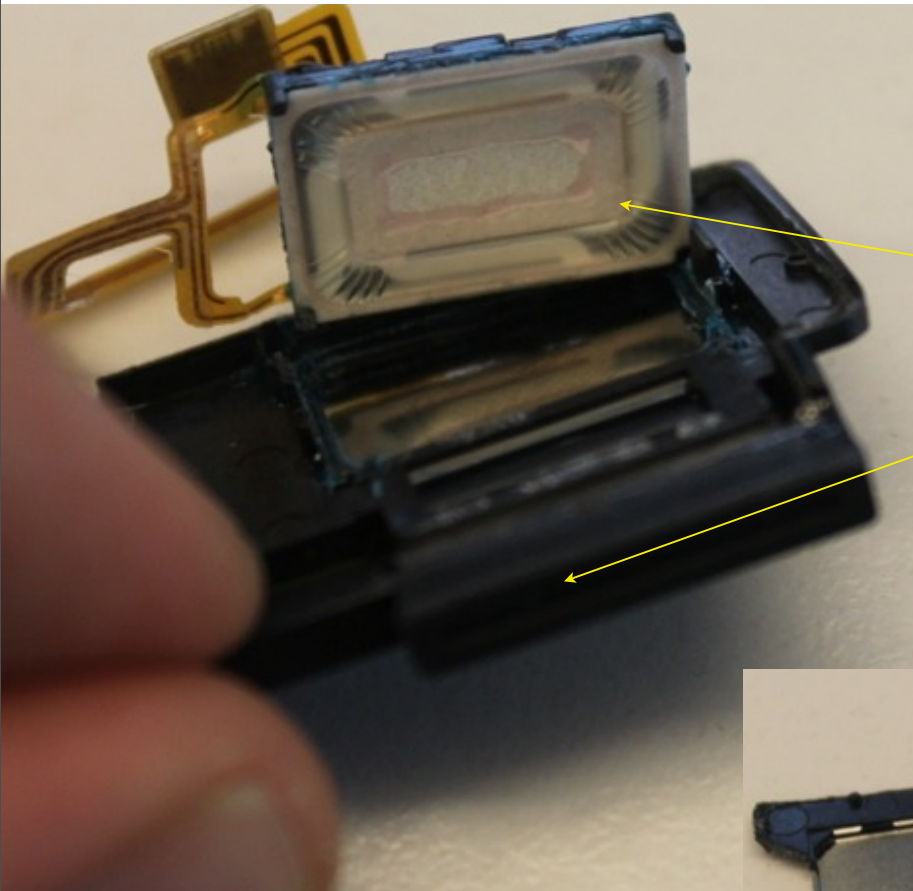
2/11/2012

iPod PD - Apple Confidential

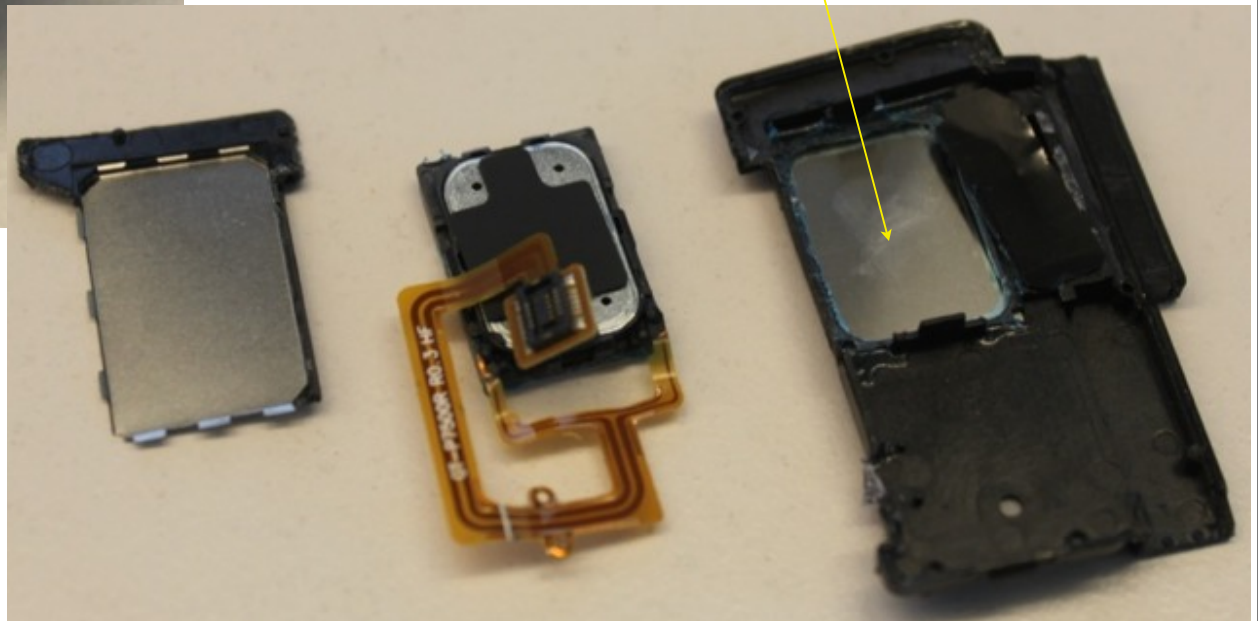
Saturday, February 11, 2012

Compact speaker geometry

Comments needed from Alex



Compact speakers project sound directly at metal plate, sound port is perpendicular to speaker orientation.



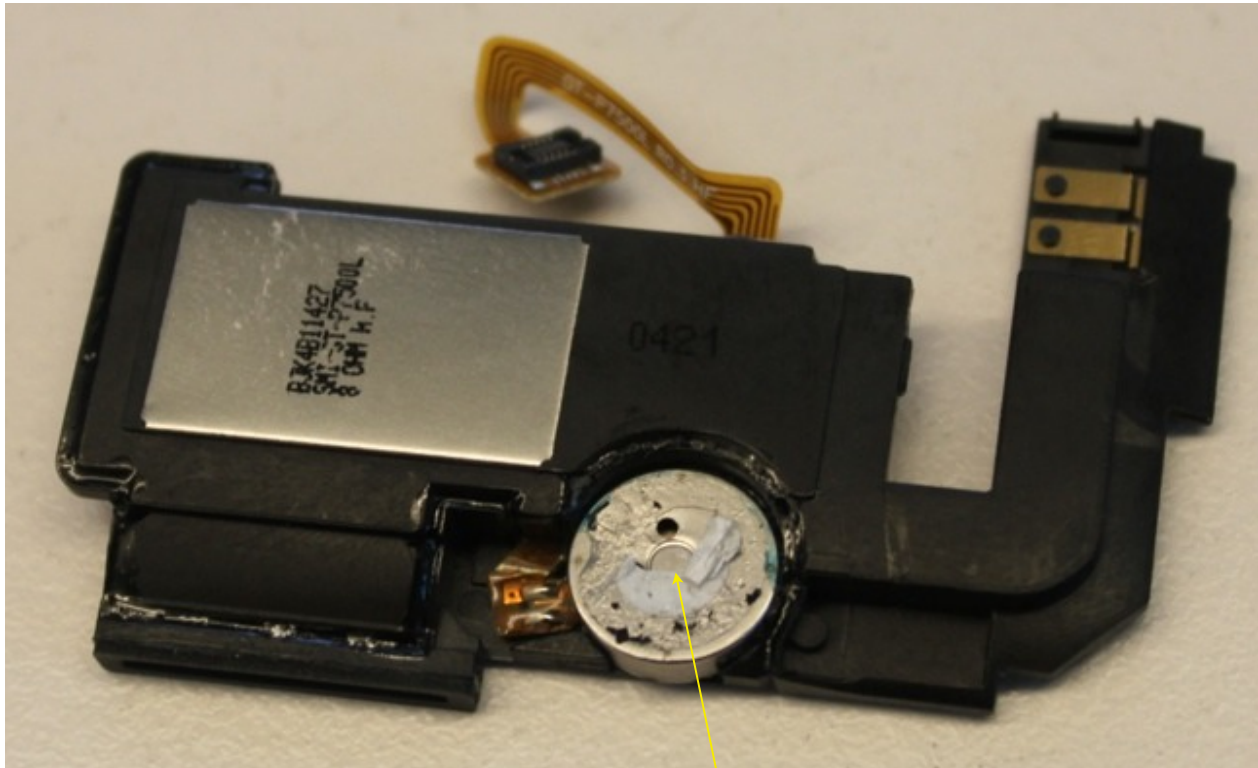
2/11/2012

iPod PD - Apple Confidential

Saturday, February 11, 2012

Linear actuator mounted on speaker

Comments needed from Steve



Linear actuator integrated
with speaker housing

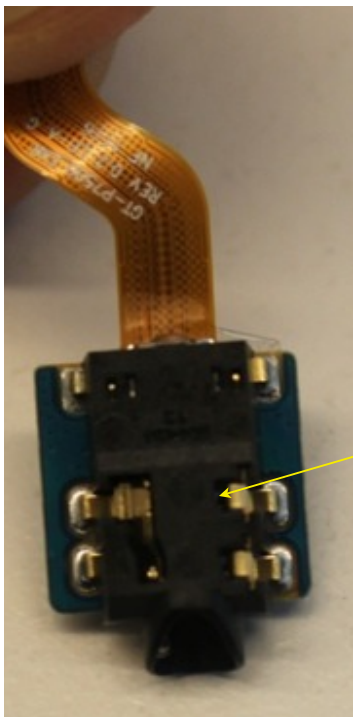
2/11/2012

iPod PD - Apple Confidential

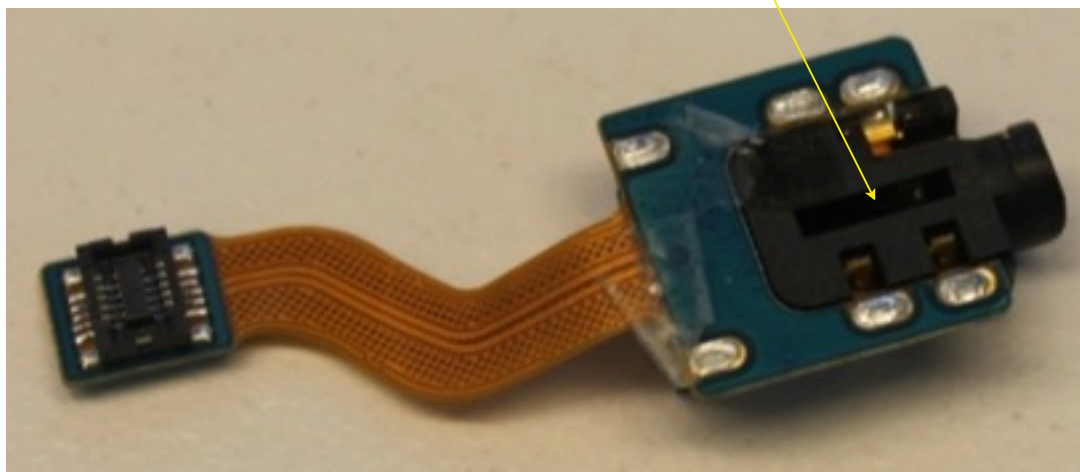
Saturday, February 11, 2012

Unsealed 3.5mm Audio Jack

Comments needed from Raff



Holes in audio jack
would permit fluid
entry to product



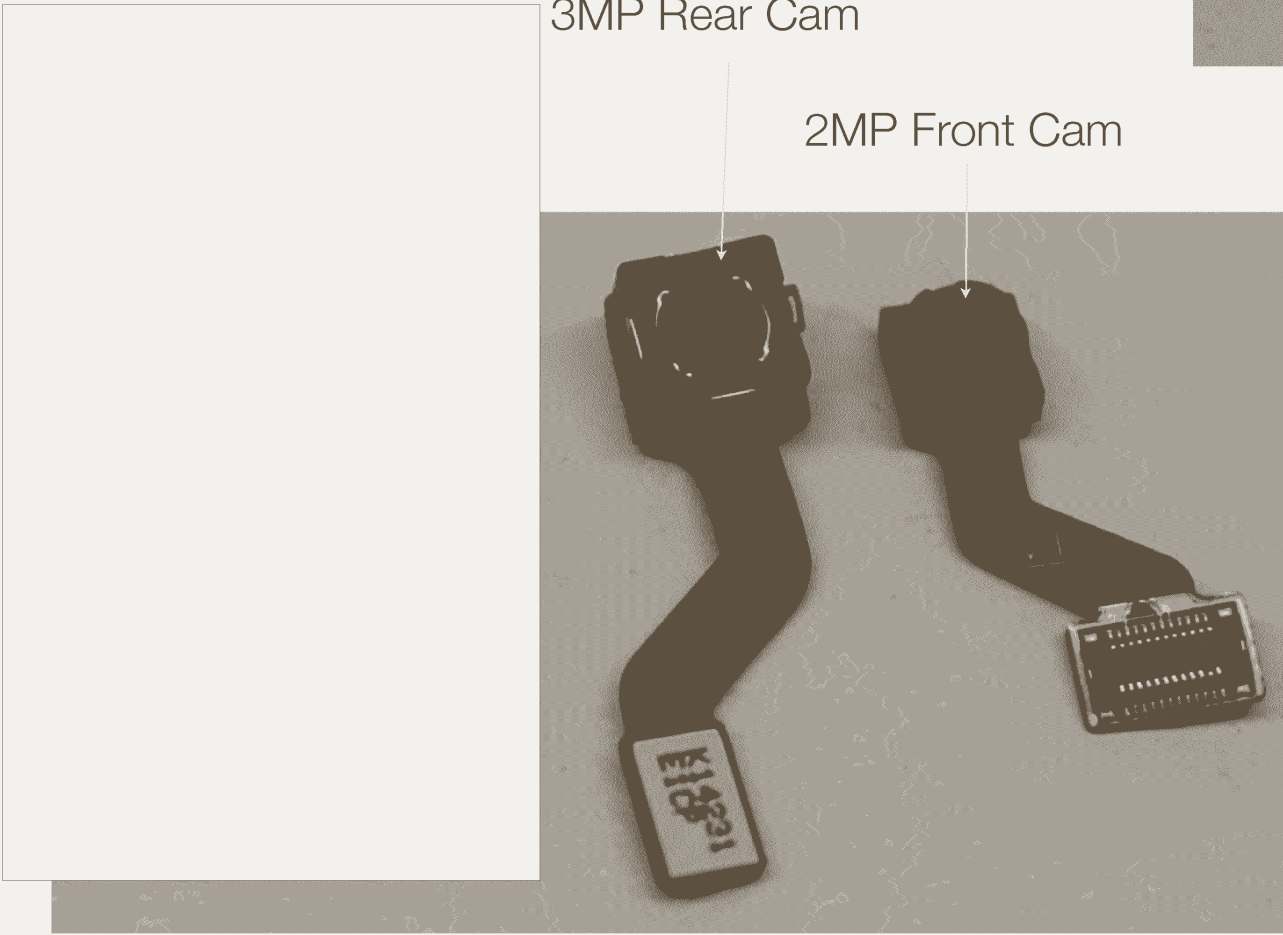
2/11/2012

iPod PD - Apple Confidential

Saturday, February 11, 2012

Camera LED Flash on Flex

Comments needed from Conor



LED Flash
on flex

Tape on cover for flatness

Comments needed from Steve



Tape around flexes helps to keep the thin plastic cover flat.

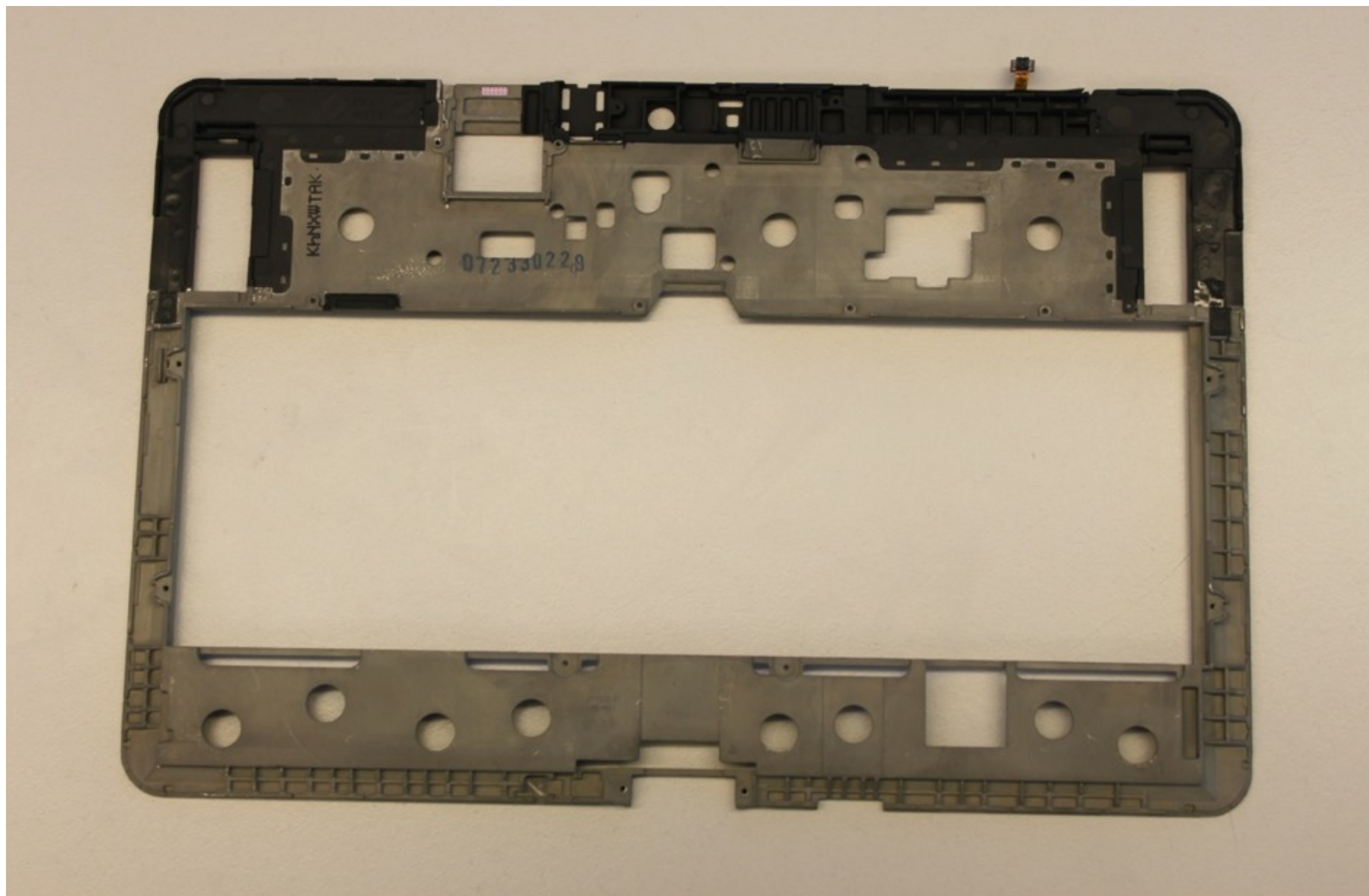
2/11/2012

iPod PD - Apple Confidential

Saturday, February 11, 2012

Chassis has plastic antenna window

Comments needed from Kevin



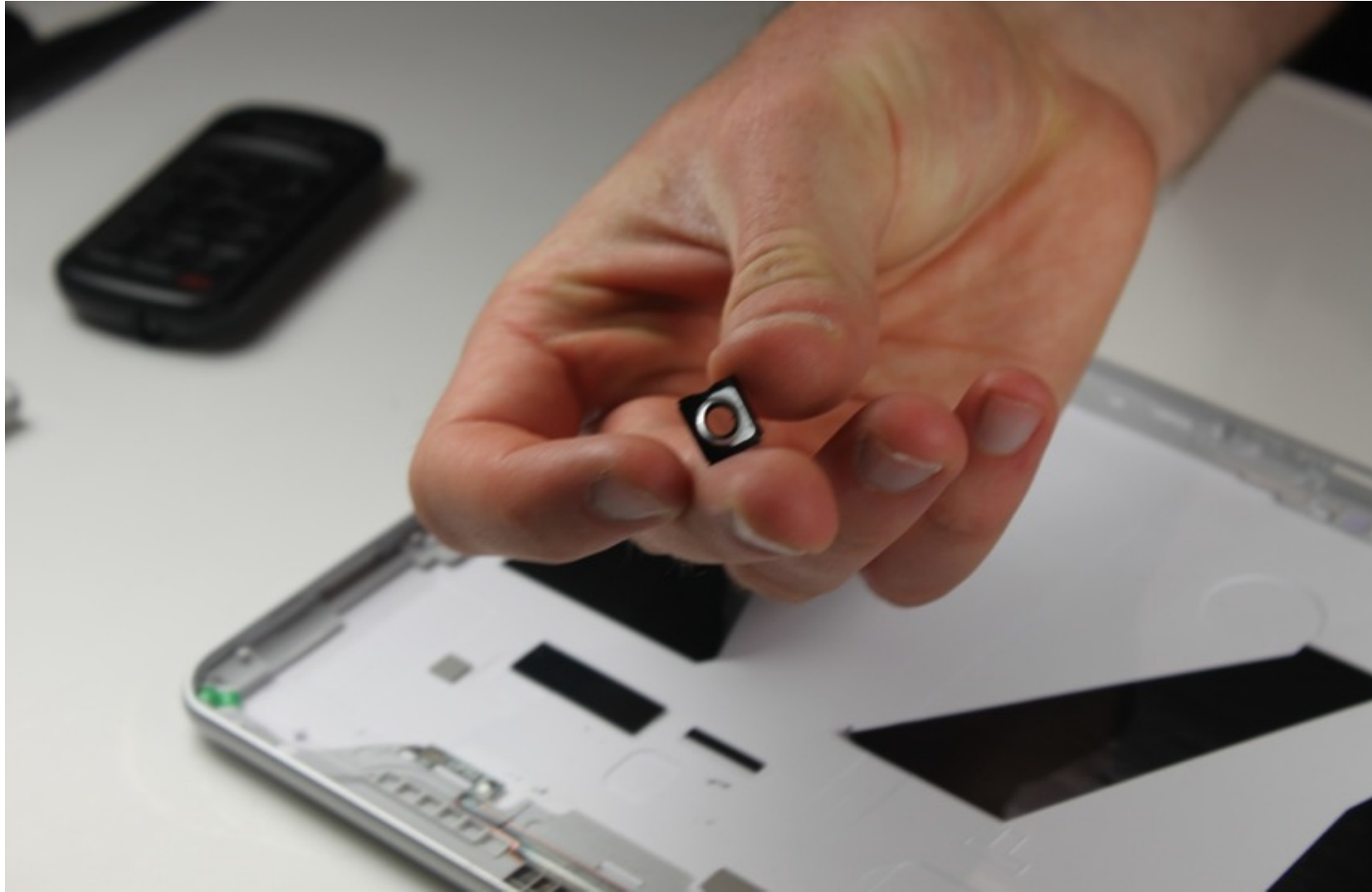
2/11/2012

iPod PD - Apple Confidential

Saturday, February 11, 2012

Folded metal camera bezel

Comments needed from Conor



2/11/2012

iPod PD - Apple Confidential

Saturday, February 11, 2012