

EXHIBIT 12



i n v e n t

User's Guide

hp iPAQ Pocket PC
h1900 series

Models: h1930, h1935, h1937, h1940,
h1945

(Not all models are available in all regions)

Document Part Number: 337112-001

May 2003

© 2003 Hewlett-Packard Company
© 2003 Hewlett-Packard Development Company, L.P.

HP, Hewlett Packard, and the Hewlett-Packard logo are trademarks of Hewlett-Packard Company in the U.S. and other countries.

iPAQ is a trademark of Hewlett-Packard Development Company, L.P. in the U.S. and other countries.

Microsoft, Windows, the Windows logo, Outlook, and ActiveSync are trademarks of Microsoft Corporation in the U.S. and other countries.

hp iPAQ Pocket PC is Powered by Microsoft® Windows®.



SD Logo is a trademark of Secure Digital.

Bluetooth™ is a trademark owned by the Bluetooth SIG, Inc.
Samsung™ is a trademark of Samsung Electronics, Inc.

All other product names mentioned herein may be trademarks of their respective companies.

Hewlett-Packard Company shall not be liable for technical or editorial errors or omissions contained herein or for incidental or consequential damages in connection with the furnishing, performance, or use of this material. The information in this document is provided “as is” without warranty of any kind, including, but not limited to, the implied warranties of merchantability and fitness for a particular purpose, and is subject to change without notice. The warranties for HP products are set forth in the express limited warranty statements accompanying such products. Nothing herein should be construed as constituting an additional warranty.

This document contains proprietary information that is protected by copyright. No part of this document may be photocopied, reproduced, or translated to another language without the prior written consent of Hewlett-Packard Company.



WARNING: Text set off in this manner indicates that failure to follow directions could result in bodily harm or loss of life.



CAUTION: Text set off in this manner indicates that failure to follow directions could result in damage to equipment or loss of information.

User's Guide
hp iPAQ Pocket PC h1900 series
First Edition (May 2003)
Document Part Number: 337112-001

Contents

1 Getting to Know Your iPAQ Pocket PC

Using the Stylus	1-5
Setting the Date and Time	1-6
Setting the Time for Home and Locations You Are Visiting	1-6
Setting the Date	1-7
Entering Owner Information	1-7
Resetting the Unit.	1-8
Performing a Normal Reset	1-8
Performing a Full Reset	1-9
Aligning the Screen	1-10
Routine Care.	1-10

2 Using ActiveSync

Connecting to a Computer	2-2
Synchronizing with Your Computer	2-2
Changing Synchronization Settings.	2-4
Copying Files	2-5
Installing Programs	2-6
Backing up and Restoring	2-6
Synchronizing Links	2-7
Sending and Receiving E-mail.	2-7
Requesting Meetings	2-7

3 Managing the Battery

Installing the Battery	3-1
----------------------------------	-----

Removing the Battery 3–5
Charging the Battery 3–6
Preserving Battery Time 3–7
 Changing the Backlight Settings 3–7
 Manually Monitoring the Battery 3–8

4 Learning the Basics

Using the Today Screen 4–1
 Navigation Bar and Command Bar 4–2
 Status Icons 4–3
 Pop-Up Menus 4–4
 Creating information 4–5
 Customizing the Today Screen 4–6
Using Programs 4–8
 Opening Programs 4–8
 Minimizing Programs 4–8
 Closing Programs 4–9
 Installing Programs 4–10
 Using iPAQ Image Viewer 4–10
 Backing Up Information 4–17
 Using iPAQ File Store Folder 4–18

5 Learning Input Methods

Changing Word Suggestion Options 5–2
Using the On-Screen Keyboard 5–4
Writing with the Stylus and the Letter Recognizer 5–5
Writing with the Stylus and Microsoft Transcriber 5–7
Writing with the Stylus and Block Recognizer 5–8
Drawing and Writing on the Screen 5–9
 Converting Writing to Text 5–9

6 Expansion Cards

Installing an Expansion Card 6–2
Removing a Secure Digital (SD) Expansion Card 6–3

Viewing the Content of Memory Cards 6–4

7 Connecting to the Internet

Connecting to a Private Network 7–2
 Synchronizing Links 7–2
 Entering an Internet Address 7–3
 Using a Favorites List 7–4

8 Using Bluetooth

Getting Acquainted with Bluetooth 8–2
 Understanding Terms 8–3
 Supported Services 8–4
 Working with Bluetooth Settings 8–5
 Opening Bluetooth Settings 8–5
 Setting Accessibility Properties 8–6
 Enabling Bluetooth Services 8–9
 Setting a Shared Folder 8–11
 Understanding Profiles 8–12
 Working with Bluetooth Manager 8–15
 Opening Bluetooth Manager 8–16
 Locating and Selecting a Device 8–16
 Connecting to Other Devices 8–18
 Identifying the Communications Port 8–18
 Establishing an ActiveSync Connection 8–19
 Establishing a Serial Connection 8–20
 Dial-Up Networking 8–20
 Join a Personal Area Network 8–22
 Establishing a Cell Phone Partnership 8–22
 Working with Files 8–22
 Creating a File Transfer Connection 8–23
 Sending Files 8–23
 Creating a Folder on a Remote Device 8–23
 Receiving a File from a Remote Device 8–24
 Deleting a File from a Remote Device 8–24

Using Business Card Exchange	8–24
Setting Up Your Business Card Information	8–25
Opening a Connection	8–27
Viewing Connection Status	8–27
Closing a Connection	8–28
Viewing Connection Information	8–28
Working with Connections	8–28

9 Troubleshooting

Common Problems	9–1
ActiveSync	9–4
Bluetooth	9–6
Expansion Cards	9–7

A Regulatory Notices

Federal Communications Commission Notice	A–1
Declaration of Conformity for products marked with the FCC logo—United States only	A–2
Canadian Notice	A–3
Avis Canadien	A–3
Japanese Notice	A–3
European Union Notice	A–4
Battery Warning	A–5
Equipment Warning	A–5
Airline Travel Notice	A–6
Wireless Notices	A–6
U.S. Regulatory Wireless Notice	A–6
Canadian Regulatory Wireless Notice	A–6
Japanese Regulatory Wireless Notice	A–7
Brazilian Regulatory Wireless Notice	A–7

B Specifications

System Specifications	B–1
Physical Specifications	B–2

Operating Environment B-2

Index




Getting to Know Your iPAQ Pocket PC

Congratulations on purchasing an HP iPAQ Pocket PC h1900 Series. Use this guide to find out about setting up your Pocket PC and to learn about how it works.

The software programs described below are preinstalled on your iPAQ Pocket PC. These preinstalled programs are not deleted if your Pocket PC loses power.

You can find detailed information for using these programs in the Help files on your iPAQ Pocket PC. To access these Help files, from the **Start** menu, tap **Help** and select a program.

In addition, Microsoft Pocket PC Basics provides instructions on operating the Pocket PC. To locate Pocket PC Basics, go to the **Today** screen and tap **Start > Help**.

hp iPAQ Software	Functions
iPAQ Backup	Back up your data to protect it from loss due to hardware failure, battery power failure, or accidental deletion.  Trial version on CD for h1930 series. Full version pre-installed for h1940 series.
iPAQ Image Viewer	Display individual images and run slide shows. Also display images from a digital camera SD storage card.  Full version on CD for h1930 series. Full version pre-installed for h1940 series.
Self-Test	Run a basic diagnostic test on the device..
Asset Viewer	List detailed information about your system configuration.
Bluetooth (available on h1940, h1945 only)	Allow short-range wireless communications technology capable of exchanging information up to a distance of about 30 feet (10 meters).
hp Mobile Print Center	Enable printing.  On CD for all models.

**Microsoft Pocket PC
Software**

Functions

ActiveSync	Synchronize the information between your Pocket PC and personal computer so you have the latest information in both locations. Be sure you install ActiveSync on both your Pocket PC and personal computer.
Calculator	Perform calculations and convert currency.
Calendar	Schedule appointments, meetings, and other events, and set an alarm to remind you of the appointments. Appointments for the day are displayed on the Today screen.
Connections	Connect your Pocket PC to the Internet and intranet to browse Web sites, send and receive e-mail, and synchronize information using ActiveSync.
Contacts	Keep an updated list of friends and colleagues to e-mail and telephone.
Inbox	Receive and send Internet e-mail messages in Inbox. You must have an e-mail address provided by your Internet Service Provider (ISP) or employer to send and receive e-mail.
Notes	Create handwritten or typed notes, drawings, and recordings.
Pocket Excel	Create and edit workbooks or view and edit Excel workbooks created on your personal computer.
Pocket Internet Explorer	Browse the Internet and download pages through synchronization or by connecting to the Internet.

**Microsoft Pocket PC
Software**

Functions

Pocket Word

Create new documents or view and edit Word documents created on your personal computer.

Settings

Obtain quick instructions for setting the backlight, clock, contrast, memory, power, regional settings, **Today** screen, password, sounds and notifications, etc.

Tasks

Keep track of your to-do list.

Terminal Services Client

Use programs available on your personal computer from your Pocket PC.

Windows Media Player
9 Series

Play digital audio and video files in Windows Media or MP3 format on your device.

Using the Stylus

Your iPAQ Pocket PC comes with a stylus that you should use to tap or write on your screen.



CAUTION: To prevent damage to your iPAQ Pocket PC screen, never use any device other than the stylus that comes with the Pocket PC or an approved replacement to tap or write on the screen. If you lose or break your stylus, you can order extras at www.hp.com/products/pocketpc/options.

You can perform three basic actions using the stylus:

Tap—Lightly touch the screen to select or open an item. Lift the stylus after you tap an item. Tapping is equivalent to clicking an item with the mouse on your personal computer.

Drag—Place the point of the stylus on the screen and drag an item across the screen without lifting the stylus until you have completed the selection. Dragging is equivalent to dragging with the left mouse button pressed on your personal computer.

Tap and hold—Hold the stylus pointer on an item for a short time until a menu displays. Tapping and holding is equivalent to right-clicking your personal computer mouse button. When you tap and hold, a circle of red dots appears around the stylus to indicate that the menu will soon pop up.

Setting the Date and Time

When you turn on your iPAQ Pocket PC for the first time, you are requested to select your time zone. After setting the time zone, you still need to set the time and date on your unit. All three settings are located in the Clock Settings screen and can be set at the same time.



By default, the time on the iPAQ Pocket PC is synchronized with your personal computer each time the two devices connect using ActiveSync.

Setting the Time for Home and Locations You Are Visiting

1. From the **Start** menu, tap **Settings > System tab > Clock** icon.

SHORTCUT: From the **Today** screen, tap the **Clock** icon to set the time.

2. Tap either **Home** or **Visiting**.
3. Tap the **time-zone** down arrow, and select the appropriate time zone.
4. Tap the hour, minutes, or seconds, and use the up and down arrows to adjust the time.

SHORTCUT: You can also adjust the time by moving the hands of the clock with the stylus.

5. Tap **AM** or **PM**.
6. Tap **OK**.
7. Tap **Yes** to save the time.

Setting the Date

1. From the **Start** menu, tap **Settings** > **System** tab > **Clock** icon.

SHORTCUT: From the **Today** screen, tap the **Clock** icon to set the date.

2. Tap the down arrow by the date.
3. Tap the left or right arrow to select a month and year.
4. Tap a day.
5. Tap **OK**.
6. Tap **Yes** to save the date settings.

You need to reset your time zone, time, and date if:

- The location time (Home or Visiting) needs to be changed.
- All power to the iPAQ Pocket PC is lost, which removes all saved settings.
- You perform a full reset of your iPAQ Pocket PC.

SHORTCUT: From the **Today** screen, tap the **Clock** icon to set the time zone, time, and date.

Entering Owner Information

You can personalize your iPAQ Pocket PC by entering owner information. To enter owner information:

1. From the **Today** screen, tap **Tap here to set owner information**.

SHORTCUT: Tap **Start** > **Settings** > **Owner Information**

2. Tap in the **Name** field. A keyboard appears at the bottom of the screen. Tap on the characters to enter your name.

3. Tap the **Tab** key on the keyboard to move the cursor to the next field.
4. Continue entering whatever information you want to include.
5. To display owner information at startup, tap in the **Show information when device is turned on** checkbox.
6. Tap on the **Notes** tab to enter any notes.
7. Tap **OK** to save the information and return to the **Today** screen.

Resetting the Unit

Performing a Normal Reset

A normal reset is sometimes referred to as a “soft reset.” A normal reset stops all running applications, but does not erase any programs or saved data.



CAUTION: Be sure to save any **unsaved** data before performing a normal reset since normal reset erases all **unsaved** data.

To perform a normal reset:

1. Locate the **Reset** button on the side of your iPAQ Pocket PC.
2. Use the stylus to lightly press the **Reset** button for two seconds. The Pocket PC restarts in approximately five seconds and displays the **Today** screen.

Performing a Full Reset

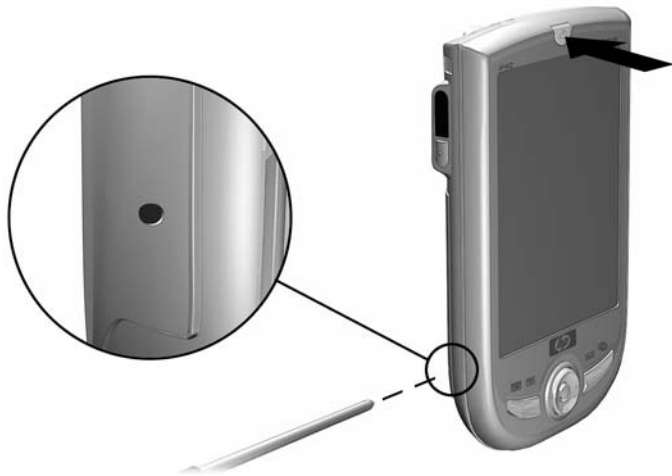
A full reset is sometimes referred to as a “hard reset.” Perform a full reset when you want to clear all settings, programs, and data from RAM.



CAUTION: If you perform a full reset, your iPAQ Pocket PC returns to its default settings and loses all information that is not recorded in iPAQ File Storage.

To perform a full reset:

1. Press and hold the **Power** button.



2. Press the **Reset** button on the side of the iPAQ Pocket PC with the Stylus.
3. Hold both buttons until the Pocket PC resets. A progress graph displays on the lower portion of the screen.
4. Release the **Power** button and remove the stylus. The Pocket PC powers on.

Aligning the Screen

When the iPAQ Pocket PC is turned on for the first time, you are guided through a screen alignment process. You must realign your screen if:

- The Pocket PC does not respond accurately to your taps.
- You perform a full reset of your Pocket PC.

To realign the iPAQ Pocket PC screen:

1. From the **Start** menu, tap **Settings > System** tab > **Screen** icon.
2. Tap the **Align Screen** button.



To use an alternate path to the same destination without tapping on the screen, push down and hold the 5-Way Navigation button, and press Application Button 1 (Calendar).

3. Tap the cross-hair object at each location. Be precise when tapping the cross-hair object.
4. Tap **OK**.

Routine Care

To keep your iPAQ Pocket PC in good condition and working properly, follow these guidelines:

- Keep your Pocket PC away from excessive moisture and temperature extremes.
- Do not expose your Pocket PC to liquids or precipitation.
- Do not place anything on top of your Pocket PC to prevent damage to the screen..
- Clean your Pocket PC by wiping the screen and the exterior with a soft, damp cloth lightly moistened only with water.

- Avoid exposing your Pocket PC to direct sunlight or strong ultraviolet light for extended periods of time.
- Avoid scratching the surface of the screen and banging it against hard objects.
- Use only the stylus that comes with your Pocket PC or an approved replacement on the screen to prevent scratching it.



CAUTION: To reduce the risk of electrical shock or damage to the internal components, do not spray liquid directly on the screen or allow excess liquid to drip inside your iPAQ Pocket PC. Using soap or other cleaning products on the screen may discolor the finish and damage it.

Using ActiveSync

You can use Microsoft ActiveSync to:

- Synchronize information between your iPAQ Pocket PC and your personal computer or server so that you have the latest information in all locations.
- Change synchronization settings and the synchronization schedule.
- Copy files between your device and personal computer.
- Install applications on your iPAQ Pocket PC.
- Back up and restore device information.
- Synchronize links.
- Send and receive e-mail.
- Request meetings.

Connecting to a Computer

Connect your iPAQ Pocket PC to your personal computer using Microsoft ActiveSync and the USB Synchronization Cable, a wireless infrared connection, or Bluetooth. For more information on using ActiveSync with Bluetooth, refer to Chapter 8, “Using Bluetooth.”



When using Microsoft ActiveSync to synchronize e-mail on your personal computer with your iPAQ Pocket PC, you must have Microsoft Outlook 98 or later installed on your personal computer. If you do not have Outlook, install the Microsoft Outlook 2002 software from the CD. Microsoft Outlook Express will **not** work with the iPAQ Pocket PC and ActiveSync.

Synchronizing with Your Computer



CAUTION: For synchronization to work properly, install Microsoft ActiveSync on your personal computer **before** you connect your iPAQ Pocket PC to your computer.

During ActiveSync installation, you can:

- Create partnerships that enable you to synchronize information with multiple computers.
- Select information to be synchronized with your iPAQ Pocket PC (for example, Contacts, Calendar, Inbox, Tasks, Favorites, Files, Notes, and AvantGo).



When you synchronize files, you can drag and drop the selected files from your personal computer to the synchronized folder on your iPAQ Pocket PC. If you named your device “PC1” when you created your partnership, then the synchronized folder is named “PC1.” When you synchronize, the files move to your iPAQ Pocket PC.

To install Microsoft ActiveSync on your personal computer:

1. Insert the Companion CD into the CD tray or slot on your personal computer.
2. Select the link to install Microsoft ActiveSync.
3. Follow the instructions in the installation wizard. For more help, click the ActiveSync **Help** button during installation.

The information you select automatically synchronizes when your installation is complete.

4. After installing ActiveSync on your personal computer, connect the iPAQ Pocket PC to the personal computer using the USB Synchronization Cable.

Using the Serial Infrared (IR) Connection

As an alternative to using the USB Synchronization Cable, you can synchronize your iPAQ Pocket PC and your personal computer using an infrared connection if you have an infrared port or an infrared USB adapter installed on your computer. The infrared connection option works only on computers that have Microsoft Windows 98SE, Me, 2000, or XP operating systems installed.

To set up an infrared connection to a computer:

1. Synchronize your iPAQ Pocket PC with your computer using the USB Synchronization Cable.
2. Follow your computer manufacturer's instructions to install and set up an infrared port.
3. Remove the cable from the iPAQ Pocket PC and line up the infrared port with the computer infrared port so they are unobstructed and within 12 inches (30.5 cm) of each other.
4. Initiate a connection by tapping **Start > ActiveSync > Tools > Connect via IR**. Synchronization begins on your device.
5. To disconnect, move the devices away from each other or tap **X** in the upper right of the screen to turn off.

Changing Synchronization Settings

You can modify your synchronization settings for Microsoft ActiveSync to:

- Change when your iPAQ Pocket PC synchronizes with your personal computer or server.
- Change the type of connection from your iPAQ Pocket PC to your computer (for example, serial, USB, infrared connections).
- Select the files and information to synchronize with your computer.
- Select the files and information you do not want to synchronize with your computer (for example, e-mail attachments).
- Determine how conflicts between information on your iPAQ Pocket PC and information on your computer are handled.

To change synchronization settings:

1. From the **Start** menu on your personal computer, click **Programs > Microsoft ActiveSync > Tools > Options.**
 - a. On the **Sync Options** tab, select the files and information to synchronize with your personal computer.
 - b. On the **Schedule** tab, select when your iPAQ Pocket PC synchronizes with your personal computer.
 - c. On the **Rules** tab, determine how conflicts between information on your iPAQ Pocket PC and information on your personal computer are handled.
2. Tap **OK** when you are finished.
3. From the **File** menu, click **Connection Settings**. Select the type of connection to be allowed between the iPAQ Pocket PC and the personal computer.

Copying Files

You can copy files to and from your personal computer using **Explore** in ActiveSync and Windows Explorer.

To copy files:

1. From the **Start** menu on your personal computer, click **Programs > Microsoft ActiveSync.**
2. Click **Explore.**
3. Double-click the **My Pocket PC** icon.
4. On your personal computer, right-click the **Start** menu, and select **Explore.**

5. Locate the file to be moved.
6. Drag and drop your files between your iPAQ Pocket PC and your computer. ActiveSync converts the files so that they can be used by the Pocket Office applications, if necessary.



Move your files directly into My Documents on your iPAQ Pocket PC (or into a folder inside My Documents), so the applications on your iPAQ Pocket PC can locate them.

Installing Programs

To install programs on your iPAQ Pocket PC from your personal computer using ActiveSync:

1. Connect your iPAQ Pocket PC to your personal computer using the USB Synchronization Cable.
2. Follow the instructions provided with the program and by the installation wizard.
3. Check the screen of your iPAQ Pocket PC to see if any further steps are necessary to complete the program installation.

Backing up and Restoring

To help reduce the chance of losing information, you should back up information to your computer regularly. For more information on backing up and restoring information using Microsoft ActiveSync, refer to “Backing up your Files” in Chapter 4.

Synchronizing Links

You can synchronize links to Web sites from your **Favorites** list on your computer to view them offline with Pocket Internet Explorer.

1. From the **Start** menu on your computer, click **Programs** and double-click the **Internet Explorer** icon.
2. Click **Favorites** to see the list of links to your favorite Web sites.
3. To save a Web site link to Mobile Favorites, open the Web site, and click **Create Mobile Favorite**.

If you select “Favorites” as an information type to be synchronized, ActiveSync copies your mobile favorite to your Pocket PC the next time you synchronize.

4. Follow the instructions in Synchronize information to manually synchronize your favorite links.

Sending and Receiving E-mail

You can send and receive e-mail messages by synchronizing your iPAQ Pocket PC with your personal computer using ActiveSync. If you are using ActiveSync to send and receive e-mail messages, the name of the folder you are using is displayed at the bottom of the screen. For more information on sending and receiving e-mail using ActiveSync, from the **Start** menu, tap **Help > Inbox**.

Requesting Meetings

You can schedule a meeting and send a meeting request through ActiveSync. For more information, from the **Start** menu, tap **Help > Calendar**.

Managing the Battery

Installing the Battery

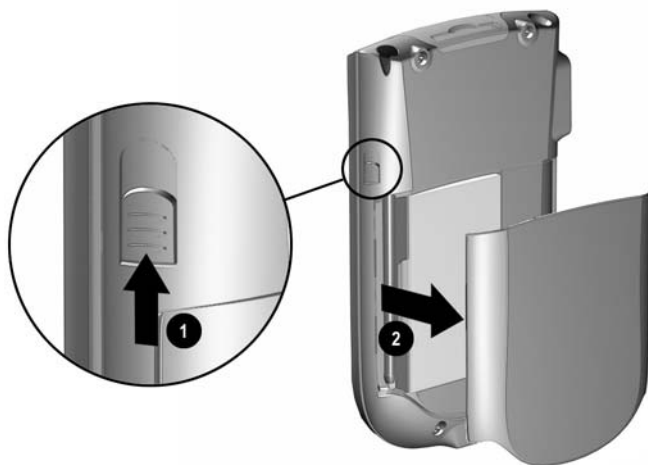
The Pocket PC has a small internal backup battery that allows you to change the main battery without losing RAM data (user-installed programs and data) as long as it is replaced immediately.

It is recommended that you fully charge the iPAQ Pocket PC battery **before** setting up the unit, and recharge regularly. Your Pocket PC uses some power to maintain files in RAM and the clock. While working at your desk, keep the Pocket PC and Charger Adapter connected through the USB Synchronization Cable. When you travel, it is recommended that you carry the AC Adapter, Charger Adapter plug, or an optional spare battery with you.

Your iPAQ Pocket PC is shipped with the battery partially charged.

To install the removable/rechargeable battery:

1. Locate the battery.
2. On the back of the iPAQ Pocket PC, slide the Cover Release latch up **1** and pull the cover away from the unit **2**.



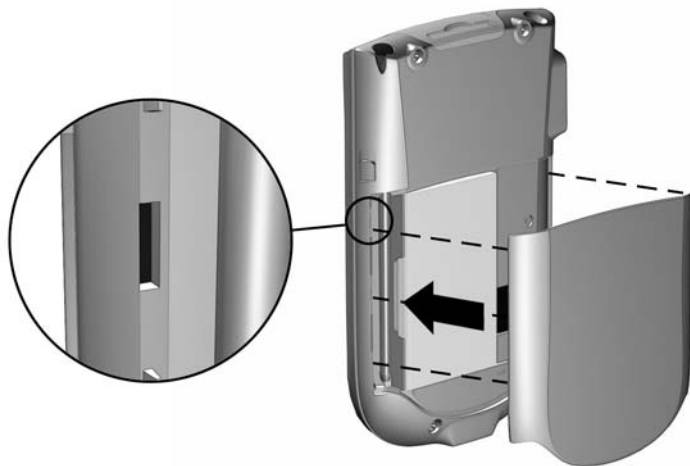
3. Insert the battery into the battery slot on the right side of the Pocket PC **1**, and push the left side of the battery into place **2** with the connectors lined up on the lower right.





Ensure the large battery label is visible when the battery is installed.



4. Replace the cover by matching the tabs on the cover to the latches on the iPAQ Pocket PC, and snap into place.



 **CAUTION:** The cover must be tightly latched in place for the iPAQ Pocket PC to operate.

 If the battery is not fully charged, you must connect the AC Adapter to the Pocket PC to fully charge it before continuing. It takes about four hours to fully charge the battery.

Removing the Battery

To remove the battery from the iPAQ Pocket PC, lift the left side of the battery and pull it out.



CAUTION: Because most of the applications and data you install on your iPAQ Pocket PC are held in memory (RAM), you need to reinstall them if the battery completely discharges or if the battery is removed from the unit for extended periods of time.

You do not need to reinstall applications and data installed in the iPAQ File Store folder (not available on all models) because they are saved in nonvolatile memory.

Charging the Battery

The standard AC Adapter works in any household outlet. You can also purchase one that works in your vehicle's cigarette lighter or a 12-volt power outlet.



CAUTION: Use only HP recommended AC adapters.

To charge the iPAQ Pocket PC using the AC Adapter:

1. Plug the AC Adapter into an electrical outlet.
2. Insert the AC Adapter plug into the charging adapter.
3. Insert the charging adapter into the bottom of the iPAQ Pocket PC.



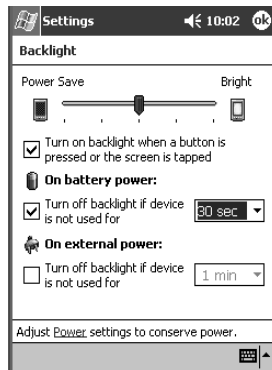
4. When the power indicator on the top of the iPAQ Pocket PC turns solid amber, the unit is fully charged and you can disconnect the AC Adapter. The approximate time to fully charge a unit is four hours.

Preserving Battery Time

Changing the Backlight Settings

To change the backlight settings in order to conserve more battery power:

1. From the **Start** menu, tap **Settings** > **System** tab > **Backlight**.
2. Select the following backlight settings:
 - Battery Power
 - External Power
 - Brightness



Manually Monitoring the Battery

To manually monitor the battery power:

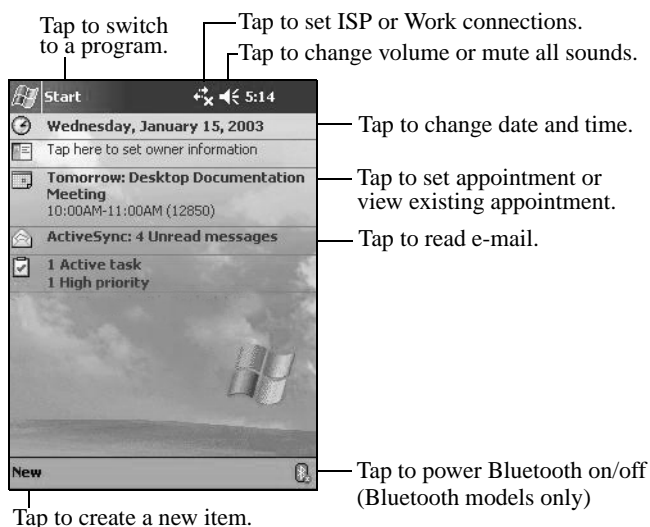
1. From the **Start** menu, tap **Settings** > **System** tab > **Power** icon.
2. Tap **OK**.

Learning the Basics

Using the Today Screen

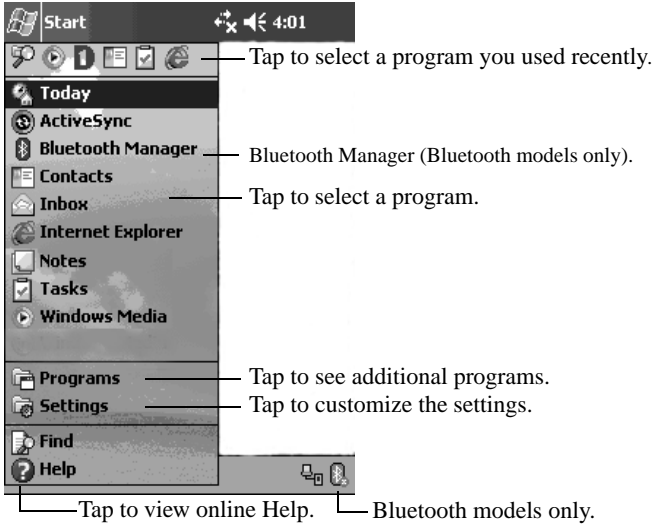
When you first turn on your iPAQ Pocket PC, the **Today** screen displays. You can also display it by tapping **Start**, and **Today**. Use the **Today** screen to view:

- Owner information
- Upcoming appointments
- Unread and unsent messages
- Tasks that need to be completed

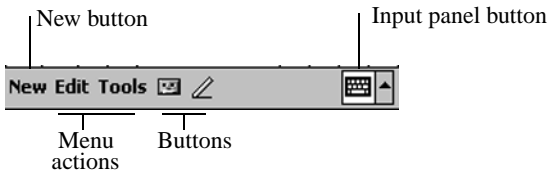


Navigation Bar and Command Bar

The Navigation bar is located at the top of the screen. It displays the active program and current time, and allows you to close screens. Use the **Start** menu to select a program.



Within each program, use the Command bar located at the bottom of the screen to perform tasks. Tap **New** to create a new item in the current program.



Status Icons

You may see the following status icons displayed on the Navigation bar or Command bar. Tap the icon on the screen to view more information related to the item.



Active connection to personal computer.



Inactive connection to personal computer.



Microsoft ActiveSync is synchronizing.



Speaker is on.



Speaker is off.



iPAQ Pocket PC is connected with the USB Synchronization Cable. This icon appears only when there is an active connection.

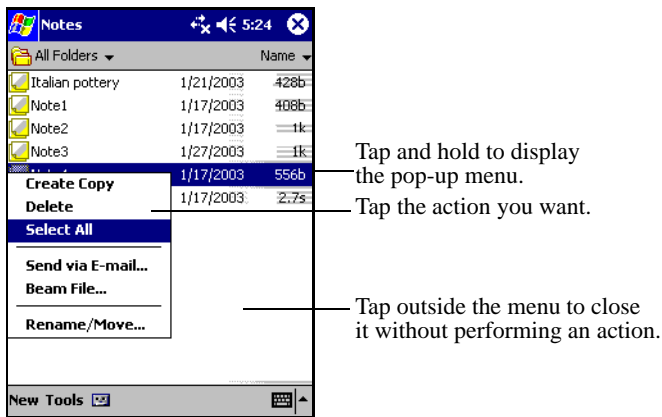


Bluetooth power-on/off icon (Bluetooth models only). When the Bluetooth icon is blue, Bluetooth is active. When the Bluetooth icon is grayed with a red X, Bluetooth is inactive.

Pop-Up Menus

Pop-up menus allow you to quickly perform an action. Use the pop-up menu to cut, copy, rename, and delete an item, also send an e-mail or send a file to another device.

To access a pop-up menu, **tap and hold** the stylus on the item on which you want to perform the action. When the menu appears, tap the desired action, or tap anywhere outside the menu to close it without performing an action.

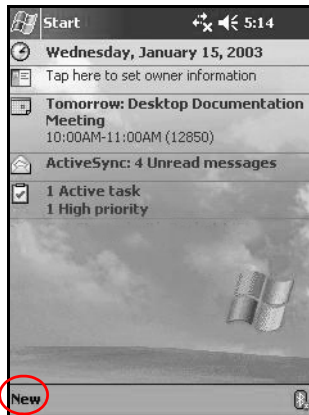


Creating information

From the **Today** screen, you can create new information, including:

- Appointments
- Contacts
- Messages
- Excel Workbook
- Notes
- Tasks
- Word documents


1. Tap , or from the **Start** menu, tap **Today** > **New**.

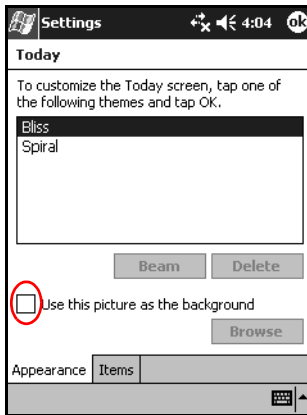


2. Tap an option to create a new item.
3. Tap **OK** after you finish creating a new item.

Customizing the Today Screen

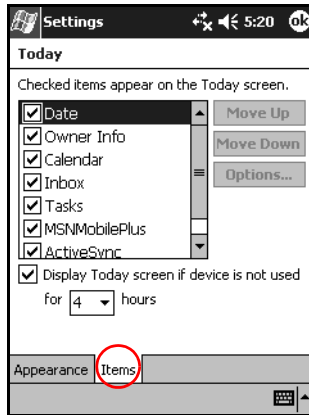
From the **Settings Today** screen, you can:

- Add a picture as the background.
 - Select the information you see.
 - Set the order of the information.
 - Set when to see the **Today** screen.
1. Tap , or from the **Start** menu, tap **Settings > Today**.
 2. Select **Use this picture as the background** checkbox.



3. Tap **Browse** to select a picture from File Explorer.

4. Tap the **Items** tab to select or reorder the information on the **Today** screen.



5. Tap an item to highlight it.
6. Tap **Move Up** or **Move Down** to change the order of items on the **Today** screen.



You cannot change the placement of the **Date** on the **Today** screen.

7. Tap the down arrow associated with **Display Today screen if device is not used for...hours** checkbox to determine how many hours must pass before the **Today** screen displays.
8. Tap **OK**.

Using Programs

Opening Programs

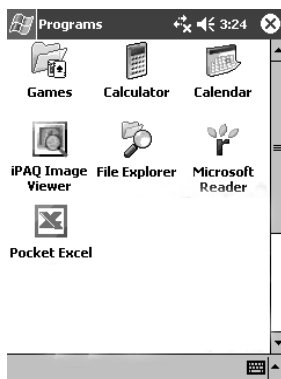
Open any program on your iPAQ Pocket PC from the **Start** menu.



You can also open a program by assigning it to a button.

To open a program:

1. Tap **Start > Programs**.
2. Tap the desired program title or logo. (Your screen may differ by model.)



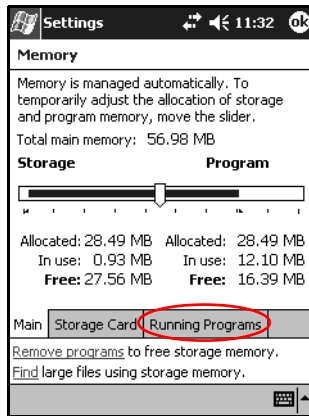
Minimizing Programs

To minimize an open program, tap the **X** at the top right of the screen.

Closing Programs

Programs automatically close based on available memory. However, if your iPAQ Pocket PC is running slowly, you can close programs manually.

1. From the **Start** menu, tap **Settings** > **System** tab > **Memory**.
2. Tap **Running Programs**. (Your screen may differ by model.)



3. Tap **Stop All** or select a particular program and tap **Stop**.



To bring a currently running program to the foreground, tap **Activate**.

Installing Programs

Install programs on your iPAQ Pocket PC from your:

- Personal computer by using Microsoft ActiveSync.
- iPAQ Pocket PC if the program file has a .cab extension.
- iPAQ Pocket PC or your computer by copying an program file that has an .exe or .cef extension.

When installing programs, look for the correct version for your iPAQ model and Microsoft PPC 2003 Pro.

- Follow the instructions provided with the program and by the installation wizard to install programs from your personal computer.
- Tap the program file in File Explorer on your iPAQ Pocket PC and follow the instructions on the installation wizard to install programs on your Pocket PC.

Using iPAQ Image Viewer

Using the Image Viewer, you can:

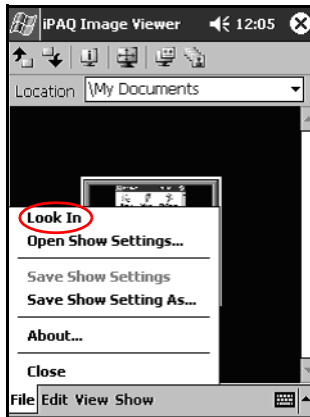
- Create a slide show of images.
- Sort and rotate images.
- Adjust the timing between images in a show.
- Set a variety of transition effects.
- View images with .bmp, .jpg, and .gif file extensions.
- Handle large files and resize photo images to screen size.



The iPAQ Pocket PC h1940 Series includes the iPAQ Image Viewer preloaded in ROM. The iPAQ Pocket PC h1930 Series requires that this application be loaded from a personal computer with a CD ROM drive.

Locating an Image

1. From the **Start** menu, tap **Programs > iPAQ Image Viewer**.
2. Tap the **File** tab and tap **Look In**.



3. Select a file and tap **OK**.

Viewing Image Information

You can view the image size and type, date taken and modified, color, and file size of an image.

To view image information:

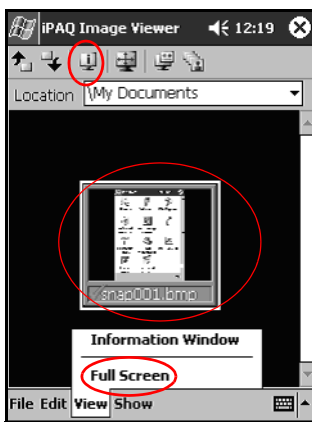
1. Locate an image and tap it to select it.
2. Tap **View > Information Window**.

Changing the View

By default, the Image Viewer opens displaying the images in the **Thumbnail View**.

You can change the view to full screen by:

- Double-tapping a thumbnail.
- Tapping **View > Full Screen**.
- Tapping the **View Full Screen** icon.



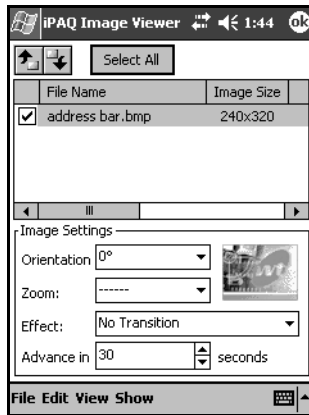
Creating a Slide Show

You can put images together to create a slide show and control display options such as:

- Orientation
- Zoom
- Image Quality
- Transition Effect
- Timing

To create a slide show:

1. From the **Start** menu, tap **Programs > iPAQ Image Viewer**.
2. Tap **Show > Set up Show... .**
3. Select images for the show and modify any image settings.



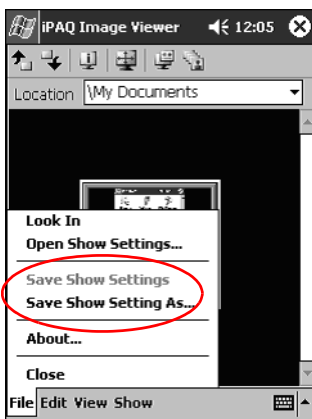
To change settings for all images in the show, tap the **Select All** button.

4. Tap **OK**.

Saving a Slide Show

To save a slide show:

1. From the **Start** menu, tap **Programs** > **iPAQ Image Viewer**.
2. Create a slide show.
3. Tap **File** and **Save Show Settings** or **Save Show Settings As...**

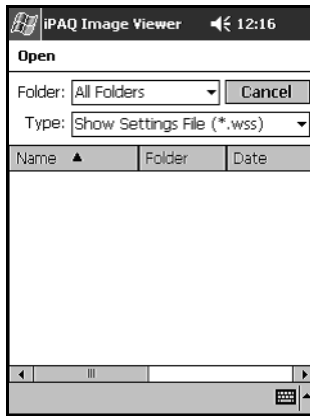


4. Enter a name and the location where you want to save the settings.
5. Tap **OK**.

Opening a Slide Show

To open a slide show:

1. From the **Start** menu, tap **Programs** > **iPAQ Image Viewer**.
2. Tap **File**, > **Open Show Settings...** .
3. Select a show setting.



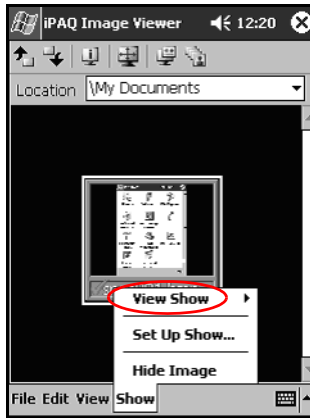
Sorting Image Files

To sort image files:

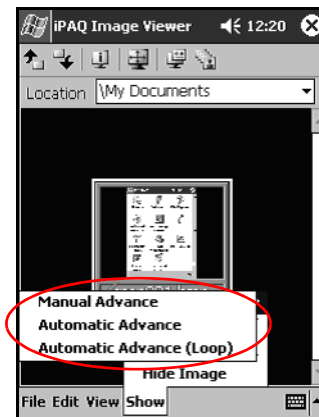
1. From the **Start** menu, tap **Programs** > **iPAQ Image Viewer**.
2. Tap **Edit** > **Sort Images**.
3. Select sort order. You can sort by ascending or descending **Name**, **Type**, **Size**, or **Date**.

Viewing a Slide Show

1. From the **Start** menu, tap **Programs > iPAQ Image Viewer**.
2. Create or open an existing slide show.
3. Tap the **Show** tab and **View Show**.



4. Select a method for advancing the images in the show:
Manual Advance, **Automatic Advance**, or **Automatic Advance (Loop)**.



Backing Up Information

Use iPAQ Backup or Microsoft ActiveSync Backup to back up and restore information on your iPAQ Pocket PC. To help reduce the chance of losing information you should back up information on a regular schedule.



iPAQ Backup is installed in ROM on the iPAQ Pocket PC h1940 Series and a trial version is contained on CD for the h1930 Series. You must install ActiveSync on your personal computer before using ActiveSync Backup.


Backup/Restore using iPAQ Backup

iPAQ Backup saves your data in a backup file. You may designate a file name and a location for the file to be saved. iPAQ Backup backs up only to a memory card or the iPAQ File Store folder (not available on all models). Close all programs on your iPAQ Pocket PC before backing up or restoring your information.



CAUTION: Restoring your information replaces the current information on your iPAQ Pocket PC with the information saved in your backup.

To backup/restore using iPAQ Backup:

1. Tap  , or from the **Start** menu, tap **Programs > iPAQ Backup**.
2. Tap the **Backup** tab or the **Restore** tab.
3. Select the files and folders to be backed up or restored.
4. Select file location for backed-up data.
5. Set backup or restore options.
6. Press the **Backup** or **Restore** button, and press the **Start** button on the next screen.

Backup/Restore Using ActiveSync

Close all programs on your iPAQ Pocket PC before backing up or restoring your information.



CAUTION: Restoring your information replaces the current information on your iPAQ Pocket PC with the information saved in your backup.

To backup/restore using ActiveSync:

1. Be sure the iPAQ Pocket PC is connected to your personal computer.
2. From your personal computer, open Microsoft ActiveSync. From the **Start** menu, click **Programs > Microsoft ActiveSync**.
3. From the **Tools** menu, click **Backup/Restore**.
4. Click the **Backup** or **Restore** tab, and select your options.
5. Click **Backup Now** or **Restore Now**.

Using iPAQ File Store Folder

You can install programs and save files to the iPAQ File Store folder, which is accessed from File Explorer on your iPAQ Pocket PC.

Programs and files stored in iPAQ File Store (not available on all models) are held in ROM and are saved if you perform a full reset of your iPAQ Pocket PC or if the battery discharges completely.

To save to iPAQ File Store:

1. Copy the files to be saved to the iPAQ File Store folder.
2. From the **Start** menu, tap **Programs > File Explorer > My Device > iPAQ File Store**.
3. Paste the selected files.



Before saving files to the iPAQ File Store folder, it is a good idea to determine how much memory is available in the folder. To view the amount of memory, from the **Start** menu, tap **Settings > System > Memory > Storage Card** tab.

Learning Input Methods



CAUTION: To avoid damaging your iPAQ Pocket PC screen, always use a stylus. **Never** use a pen or any type of metal pointer on the screen.

To input information to your Pocket PC, you can tap the keyboard or write with the Letter Recognizer, Microsoft Transcriber, or Block Recognizer in any application. You can use the stylus to draw and write on the screen in the Notes application and from any **Notes** tab in the Calendar, Contacts, and Tasks applications.

Changing Word Suggestion Options

As you type or write, the Pocket PC suggests words for you in a box above the keyboard, Letter Recognizer, or Block Recognizer, but not in the Transcriber.

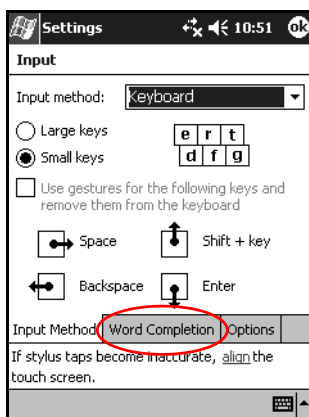
You determine:

- If words are suggested.
- The number of letters you enter before a word is suggested.
- The number of words that are suggested per entry.

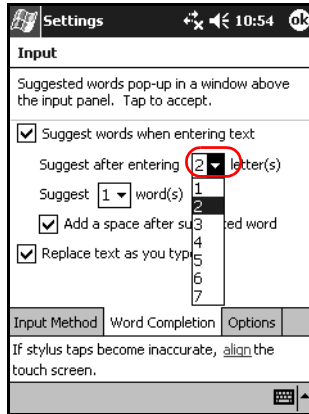
If you do not want any words suggested, remove the checkmark by tapping the checkbox next to **Suggest Words When Entering Text**.

To change settings for word suggestions:

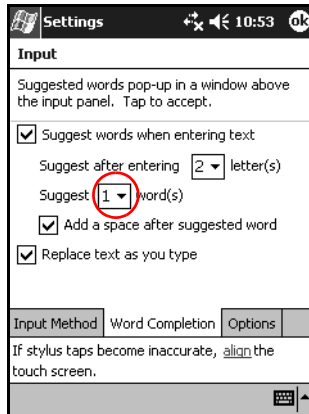
1. From the **Start** menu, tap **Settings > Input**.
2. Tap the **Word Completion** tab.



3. Tap the down arrow associated with letters and select the number of letters you want to type before a word is suggested.



4. Tap the down arrow associated with words and select the number of words you want suggested.

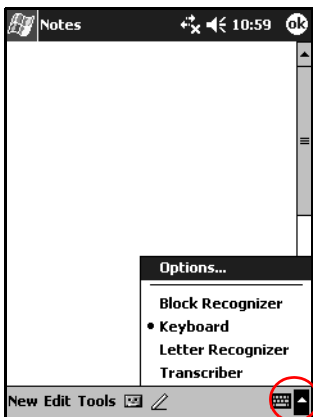


5. Tap **OK**.

Using the On-Screen Keyboard

Use the stylus to tap letters, numbers, and symbols on the on-screen keyboard to enter typed text directly onto the screen.

1. From any application, tap the up arrow next to the **Input Panel** icon.



The Transcriber option is not available on all models.

2. Tap **Keyboard** to display a keyboard on the screen.
-



To see symbols, tap the **123** or **Shift** key.

3. Tap a letter, symbol, or number to enter information.
4. Tap **OK**.

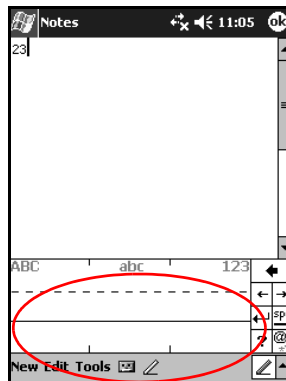
Writing with the Stylus and the Letter Recognizer

Use the stylus and Letter Recognizer to write letters, numbers, and symbols on the screen. Create words and sentences by writing in uppercase (ABC), lowercase (abc), and symbols (123) as instructed here.

To write with the stylus and Letter Recognizer:

1. From any application, tap the up arrow next to the **Input Panel** icon.
2. Tap **Letter Recognizer**.
3. Write a letter or symbol between the dashed line and baseline.
 - a. To display in uppercase, write a letter between the hatch marks labeled **ABC**.
 - b. To display in lowercase, write a letter between the hatch marks labeled **abc**.
 - c. Write a number or draw a symbol between the hatch marks labeled **123**.

What you write will be converted to text.





A question mark within an program indicates a **Help** file.



For the Letter Recognizer to work effectively, write characters between the dashed line and baseline.

- If you are writing a letter like “p,” write the top portion within the dashed line and baseline, and the tail portion below the baseline.
 - If you writing a letter like “b,” write the bottom portion within the dashed line and baseline, and the top portion above the dashed line.
-

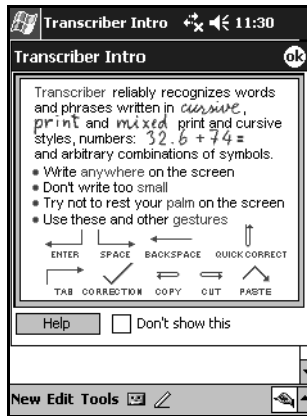
Writing with the Stylus and Microsoft Transcriber



Microsoft Transcriber is not available on all models.

Use the stylus and Microsoft Transcriber to write words, letters, numbers, and symbols anywhere on the screen.

1. From any application, tap the up arrow next to the **Input Panel** icon.
2. Tap **Transcriber** to display the **Transcriber Intro** screen.



3. Tap **OK**.
4. Tap **New** at the bottom of the screen.
5. Begin writing on the screen. What you write will be converted to text.



To “teach” Transcriber your style of writing, tap on the “*a*” icon at the bottom of the screen to display the **Letter Shapes** screen and follow the instructions.

Writing with the Stylus and Block Recognizer

Write letters, numbers, and symbols using the stylus and Block Recognizer. Create words and sentences by writing letters and numbers in specific areas.

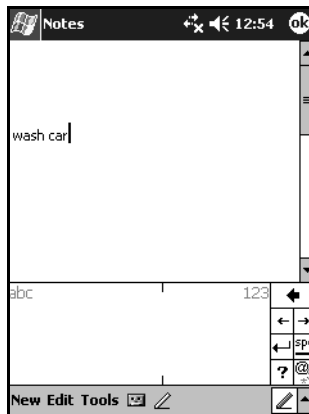
1. From any application, tap the up arrow next to the **Input Panel** button.
2. Tap **Block Recognizer**.



For online Help, tap the **?**

3. Write a word, letter, or symbol between the hatch marks.
 - a. To type text, write a letter between the hatch marks labeled “abc.”
 - b. To type numbers or symbols, write a number or symbol between the hatch marks labeled “123.”

What you write will be converted to text.



Drawing and Writing on the Screen

Use the stylus as a pen to draw and write on the screen in the Notes program or from the **Notes** tab in Calendar, Contacts, or Tasks.

1. From the **Start** menu, tap **Notes > New**.
2. Draw and write on the screen.
3. Tap the **Pen** icon.
4. Tap **OK**.

Converting Writing to Text

You can convert your writing to text when you write with the stylus in the Notes program or from the Notes tab in:

- Calendar
- Contacts
- Tasks

To convert writing to text:

1. From the **Start** menu, tap **Notes**.



Otherwise, tap the **Notes** tab in Calendar, Contacts, or Tasks.

2. Tap a note to open it.
3. Tap **Tools**.
4. Tap **Recognize**.



To convert a particular word or phrase, highlight it before you tap **Recognize**. If a word is not recognized, it will not be converted.

5. Tap **OK**.

Expansion Cards

You can expand the memory and connectivity of your iPAQ Pocket PC. Use optional expansion cards for:

- Connecting wirelessly or connecting by using a cable to the Internet or to a network
- Adding functionality such as a digital camera
- Expanding the memory of your iPAQ Pocket PC
- Viewing the content of memory cards



Expansion cards must be purchased separately and are not included with your iPAQ Pocket PC.

To locate information about expansion cards, visit the following HP Web site:

www.hp.com/products/pocketpc/options

Installing an Expansion Card

To install a Secure Digital (SD) card into an expansion slot on the iPAQ Pocket PC:

1. Locate the slot on the top of the iPAQ Pocket PC.
2. Remove the protective plastic card.
3. Insert the expansion card into the expansion slot and push the connection edge of the card firmly into the expansion slot.



4. To prevent power loss, remove any expansion cards from the SDIO expansion slot before turning off the iPAQ Pocket PC. Leaving in the expansion card can drain the unit.



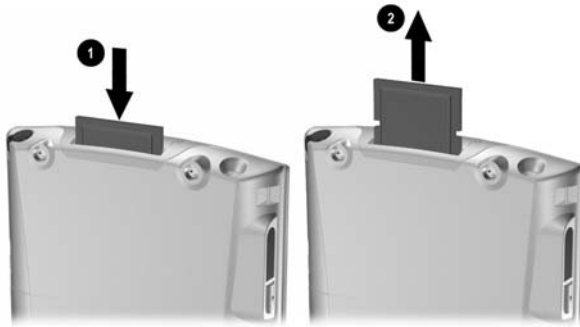
If your expansion card is not recognized, follow the card manufacturer's instructions to install it.



For more detailed help, from the **Start** menu, tap **Help** > **Connections**.

Removing a Secure Digital (SD) Expansion Card

1. Close all applications that are using the expansion card.
2. Remove a card from the Secure Digital expansion slot by **slightly pushing down on the card ①** to unlock it.



3. When the card disengages and pops up ②, pull it from the expansion slot.



CAUTION: SD cards must first be unlocked before removal.

Viewing the Content of Memory Cards

Use File Explorer to view the files that are located on your optional Secure Digital card.

1. From the **Start** menu, tap **Programs > File Explorer**.
2. Tap the root directory of **My Device**, and select the Storage Card folder (SDIO) to see a list of files and folders.

Connecting to the Internet

Use your iPAQ Pocket PC to connect to the Internet or your Work network.

To send and receive e-mail with Inbox and to view Web sites with Pocket Internet Explorer, you must set up a remote connection with devices such as a Secure Digital Input/Output (SDIO) modem card, ethernet card, or a wireless 802.11x card. Another option is to use a Bluetooth-enabled device such as a phone or LAN Access point.



Use of dial-up and wireless Internet, e-mail, corporate networks, and other wireless communications, such as Bluetooth-enabled devices, may require separately purchased additional hardware and other compatible equipment, in addition to a standard Wireless LAN (WLAN) infrastructure and a separately purchased service contract. Check with your service provider for availability and coverage in your area. Not all Web content may be available. Some Web content may require installation of additional software.



For more information on this subject, refer to the Help file on your iPAQ Pocket PC by tapping **Start > Help > Connections**.

Connecting to a Private Network

1. Before you start, be sure to have your server phone number, user name, and password. This information can be obtained from your network administrator.
2. Tap **Start** > **Settings** > **Connections** tab > **Connections** icon.
3. In **My Work Network**, set up a new modem connection, new VPN Server connection, or proxy server connection.
4. Start the connection by inserting the necessary modem card into the iPAQ Pocket PC, and start using Pocket Internet Explorer. Your device automatically begins connecting.

Synchronizing Links

You can synchronize links to Web sites from your **Favorites** list on your personal computer to view them offline with Pocket Internet Explorer.

1. From the **Start** menu on your personal computer, click the **Internet Explorer** icon.
2. Click **Favorites** on the toolbar to see the list of links to your favorite Web sites.
3. To save a Web site link to Mobile Favorites, open the Web site, and then click **Create Mobile Favorite**.

If you select “Favorites” as an information type to be synchronized, ActiveSync copies your mobile favorite to your iPAQ Pocket PC the next time you synchronize.

4. Follow the instructions in Synchronize information to manually synchronize your favorite links.

Entering an Internet Address

With Pocket Internet Explorer and a connection to the Internet, you can view Web sites on your iPAQ Pocket PC by typing an address or Universal Resource Locator (URL) in the **Address bar**.



Web sites that use HTML 4.0, DHTML, animated GIF images, and Java applets may not work correctly in Pocket Internet Explorer without additional software.

To enter an Internet address (URL) on your iPAQ Pocket PC:

1. From the **Start** menu, tap **Internet Explorer > Address Bar**.



If the Address Bar is not visible, tap the **View** tab > **Address Bar** to turn it on.

2. Enter the Internet address (URL) in the **Address bar**.



3. Tap the **Go** icon.

Using a Favorites List

With Pocket Internet Explorer and a connection to the Internet, you can view Web sites on your iPAQ Pocket PC by selecting one from your **Favorites** list.

To select a Web site from your **Favorites** list:

1. From the **Start** menu, tap **Internet Explorer**.
2. Tap the **Favorites** icon and the Web site you want to view.

Using Bluetooth

Some models of the iPAQ Pocket PC come with built-in Bluetooth technology that allows short-range connections and provides fast, reliable, and secure wireless communication.



To see if your Pocket PC has built-in Bluetooth technology, tap **Start > Settings** and tap the **Asset Viewer** icon.

With Bluetooth powered on, you can send information or perform the following tasks wirelessly between two Bluetooth devices, within a range of approximately 10 meters (30 feet):

- Exchange contacts, calendar items, and tasks
- Send or exchange business cards
- Transfer files
- Synchronize with a computer through an ActiveSync connection
- Partner with a Bluetooth-enabled cell phone and use as a wireless modem
- Connect to other Bluetooth devices (Virtual COM port)
- Connect to Bluetooth wireless local area networks (WLANs)
- Print to a Bluetooth printer
- Create a personal area network (PAN) to chat, play games, etc.



Use of dial-up and wireless Internet, e-mail, corporate networks, and other wireless communications, such as Bluetooth-enabled devices, may require separately purchased additional hardware and other compatible equipment, in addition to a standard Wireless LAN (WLAN) infrastructure and a separately purchased service contract. Check with your service provider for availability and coverage in your area. Not all Web content may be available. Some Web content may require installation of additional software.

Getting Acquainted with Bluetooth

Before you start using Bluetooth to establish wireless connections, take a few minutes and familiarize yourself with:

- Terms used in this chapter
- Supported Services
- Bluetooth Settings
- Bluetooth Manager



For more detailed help, refer to the Help files installed on your iPAQ Pocket PC. From the **Start** menu, tap **Help > Bluetooth**.

Understanding Terms

The following Bluetooth terms are used throughout this chapter.

The Term...	Means...
Authentication	Verification of a numeric passkey before a connection or activity can be completed.
Authorization	Approval of a connection or activity before it can be completed.
Bluetooth neighborhood or device group	Collection of Bluetooth devices.
Bonding (Paired devices)	Create a trusted connection between your device and another. After a bond is created, the two devices become paired. A paired device does not require authentication or authorization.
Device address	Unique electronic address of a Bluetooth device.
Device discovery	Location and recognition of another Bluetooth device.
Device name	Name that a Bluetooth device provides when discovered by another device.
Encryption	Method of protecting data.
Link key	Code used to securely pair devices.
Passkey	Code you enter to authenticate connections or activities requested by other devices.
Personal Information Manager (PIM)	Collection of programs used to manage daily business tasks (for example, Contacts, Calendar, and Tasks).
Profiles	Collection of Bluetooth settings.
Service discovery	Determination of which programs you have in common with other devices.

Supported Services

The functions that Bluetooth supports are called services. You can communicate only with Bluetooth devices that support at least one of the following services:

- BPP (Basic Printer profile)
- DUN (Dial-up Networking profile)
- FAX
- FTP (File Transfer profile)
- GAP (Generic Access profile)
- HCRP (Hard Cable Replacement profile)
- LAP (LAN Access profile)
- OBEX (Object Exchange profile)
- OPP (Object Push profile)
- PAN (Personal Area Network profile)
- SPP (Serial Port profile)
- ActiveSync (Uses SPP to connect to ActiveSync on computer)

Working with Bluetooth Settings

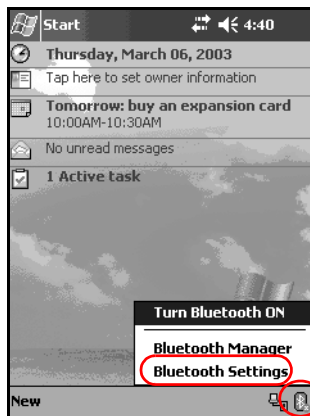
From the tabs in **Bluetooth Settings**, you can:

- Turn Bluetooth on and off
- Enter or change your iPAQ Pocket PC Bluetooth name
- Set your connection preferences
- Enable Bluetooth services
- Specify security settings
- Define settings for sharing and connecting
- Select a user profile
- View software and port information

Use the arrows to the right to scroll through the tabs.

Opening Bluetooth Settings

1. From the **Today** screen, tap the **Bluetooth** icon.
2. From the pop-up menu, tap **Bluetooth Settings**.



Turning On Bluetooth

To turn on Bluetooth from Bluetooth Settings:

1. From the **Today** screen, tap the **Bluetooth** icon.
2. From the pop-up menu, tap **Bluetooth Settings**.
3. Tap the **Turn on** button to enable.

SHORTCUTS: There are two shortcuts for turning on Bluetooth.

- From the Bluetooth pop-up menu, tap **Turn Bluetooth ON**.
- From the **Today** screen, tap **Start > Bluetooth Manager** to automatically turn on Bluetooth.

When Bluetooth is turned on, the **Bluetooth** icon turns blue and the left LED on the iPAQ Pocket PC blinks blue. To preserve battery power, it is recommended that you turn on Bluetooth only when using it.

Tap the **Turn off** button to disable. When Bluetooth is turned off, the Bluetooth icon is grayed with a red X, and no incoming or outgoing connections are possible

Setting Accessibility Properties

You can enter or change accessibility properties to define how your iPAQ Pocket PC interacts with other Bluetooth devices.

Entering a Device Name

The device name is what other devices see when they locate your device.

To enter a device name:

1. From the **Today** screen, tap the **Bluetooth** icon > **Bluetooth Settings** > **Accessibility** tab.
2. Highlight the name in the **Name** field and enter your new name.
3. Tap **OK** to save your changes.

Allowing Connections

You can determine if all devices or only paired devices can connect to your iPAQ Pocket PC.

Allowing All Devices to Connect

1. From the **Today** screen, tap the **Bluetooth** icon > **Bluetooth Settings** > **Accessibility** tab.
2. Select **Allow other devices to connect**, and **All devices**.
3. Tap **OK**.



CAUTION: This allows any device, even those unknown to you, to connect to your iPAQ Pocket PC. After they are connected, security settings for specific services apply as specified in the Bluetooth Settings.

Allowing Paired Devices to Connect

Paired devices share and exchange an internally generated Link Key before connecting. The Link Key is derived from a unique Bluetooth device address, a random number, and a user-defined password.

This feature allows only devices that you trust to connect to your iPAQ Pocket PC.

To allow paired devices to connect:

1. From the **Today** screen, tap the **Bluetooth** icon > **Bluetooth Settings** > **Accessibility** tab.
2. Select **Allow other devices to connect**, and **Paired devices only**.
3. Tap **OK**.

Allowing Others to Locate Your Device

You can allow other devices to search and locate your iPAQ Pocket PC.



If another remote device has your device's address, that device may be able to locate and connect to you even though you did not select for your device to be discovered.

To allow others to locate your device:

1. From the **Today** screen, tap the **Bluetooth** icon > **Bluetooth Settings** > **Accessibility** tab.
2. Select **Other devices can discover me**.
3. Tap **OK** to save the changes.

Enabling Bluetooth Services

You can select to enable certain services:

- Automatically when Bluetooth is activated
- When you permit the connection
- When a passkey or link key is correctly entered

You can use any of these security options when transferring files, creating a serial port connection, exchanging business card information, configuring dial-up networking, and joining a personal network.

Automatically Enabling Services

You can allow devices to connect without any authorization so that any time Bluetooth is on it is ready for connections.

To automatically enable services:

1. From the **Today** screen, tap the **Bluetooth** icon > **Bluetooth Settings**.
2. Tap the tab for the service you want to enable: **File Transfer, Information Exchange, Serial Port, Dial-up Networking, or Personal Network Server**.
3. Select **Enable service**.
4. Ensure there are no check marks in the **Authorization required** or **Authentication (Passkey) required** checkboxes.
5. Tap **OK**.

Requiring Authorization to Access Services

If you elect to require authorization to access services, you must authorize each connection. Then, your iPAQ Pocket PC will always ask you if the connection should be permitted.

To require authorization to access services:

1. From the **Today** screen, tap the **Bluetooth** icon > **Bluetooth Settings**.
2. Tap the tab for the service you want to enable: **File Transfer, Information Exchange, Serial Port, Dial-up Networking, or Personal Network Server**.
3. Select **Authorization required**.
4. Tap **OK**.

Secure Connections using a Passkey or Bond

To establish a secure connection with another device, you can use the passkey feature or an established bond. You can also add data encryption to this type of security.

A passkey is a code you enter to authenticate connections requested by other devices. The passkey must be known and used by both parties or the connection will not be allowed.

To require a passkey or bond:

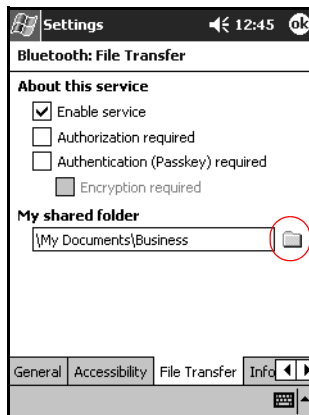
1. From the **Today** screen, tap the **Bluetooth** icon > **Bluetooth Settings**.
2. Tap the tab for the service you want to enable: **File Transfer, Information Exchange, Serial Port, Dial-up Networking, or Personal Network Server**.
3. Select **Authentication (Passkey) required**.
4. Select **Encryption Required** if you want to require all data exchanged between the devices to be encrypted.
5. Tap **OK**.

Setting a Shared Folder

You can determine the folder that other devices access when they connect to your iPAQ Pocket PC.

To select a shared folder:

1. From the **Today** screen, tap the **Bluetooth** icon > **Bluetooth Settings**.
2. Tap the **File Transfer** tab.
3. Tap the **Folder** icon and locate a desired file folder.



4. Tap **OK**.

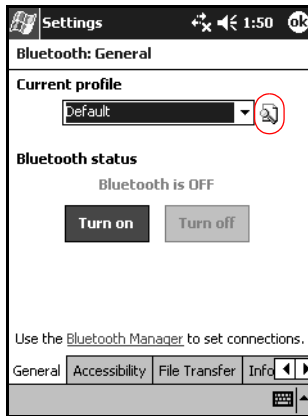
Understanding Profiles

Use profiles to quickly enable selected personal settings in multiple environments.

Creating a Profile

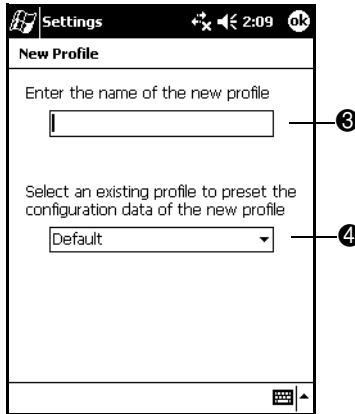
To create a profile:

1. From the **Today** screen, tap the **Bluetooth** icon > **Bluetooth Settings** > **General** tab > **Profile** icon.



2. Tap the **New** button.

3. Enter a descriptive name.
4. Select an existing profile to use as a template.



5. Tap **OK**.

Activating a Profile

When a new profile is created, you will need to activate it.

To activate a profile after creating it:

1. From the **Today** screen, tap the **Bluetooth** icon > **Bluetooth Settings**.
2. From the **General** tab, select it from the **Current Profile** down arrow list.
3. Tap **OK**.

Saving Bluetooth Configuration Settings in a Profile

To save the iPAQ Pocket PC Bluetooth configuration settings to any profile:



Bluetooth must be turned **on** for changes to be saved.

1. From the **Today** screen, tap the **Bluetooth** icon > **Bluetooth Settings**.
2. From the **General** tab, tap the **Profile** icon.
3. Select a profile from the **Add/Delete Profiles** list or create a new one.
4. Tap **OK**.
5. Set up your iPAQ Pocket PC. You should specify the desired connection, sharing, and security settings in all **Bluetooth Settings** tabs.
6. Tap **OK** to close the **Bluetooth Settings**. The changes are automatically saved.

Renaming a Profile

1. From the **Today** screen, tap the **Bluetooth** icon > **Bluetooth Settings**.
2. From the **General** tab, tap the **Profile** icon.
3. Select a profile from the **Add/Delete Profiles** list.
4. Tap the **Rename** button.
5. Enter a new descriptive name.
6. Tap **Enter**.
7. Tap **OK**.

Deleting a Profile

1. From the **Today** screen, tap the **Bluetooth** icon > **Bluetooth Settings**.
2. From the **General** tab, tap the **Profile** icon.
3. Select a profile from the **Add/Delete Profiles** list.
4. Tap the **Delete** button.
5. Tap **Yes** to confirm you want to delete the profile.
6. Tap **OK**.

Working with Bluetooth Manager

Use Bluetooth Manager to:

- Establish connections
- Display shortcuts
- Exchange business cards
- Control the on-screen display

Opening Bluetooth Manager

From the **Today** screen, tap **Start > Bluetooth Manager**.

The first screen that displays is **My Shortcuts**.



Bluetooth Manager can also be accessed from the **Today** screen by tapping **the Bluetooth** icon, and from the pop-up menu, tap **Bluetooth Manager**.



Opening Bluetooth Manager automatically turns on Bluetooth.

Locating and Selecting a Device

Several tasks require you to locate a device and connect to it.

When you are required to locate a device, the Bluetooth browser assists by searching for your desired function that supports other Bluetooth devices.

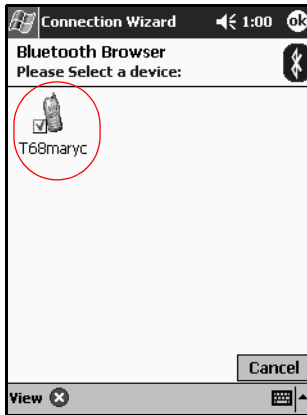
Pairing Devices

You can pair devices so they must exchange a computer generated security key prior to each connection. The security key is also called a “Link Key.” It is generated from a unique Bluetooth device address, a random number, and a user-defined password.

After two devices are paired, they have a trusted relationship with each other that can be verified using a link key. No additional input is needed from the user. Therefore, connections and activities can be performed between the paired devices without constant authorization from the user.

To pair devices:

1. From the **Today** screen, tap **Start > Bluetooth Manager**.
2. Tap **Tools**, and tap **Paired devices**.
3. Tap **Add**.
4. Tap the **Lookup**  icon.
5. Tap a device.



6. Enter a password in the **Passkey** field.
7. Tap **OK**.
8. Enter the same passkey into the other device.



Some devices, such as mobile phones, need to be placed in a mode to accept a bond from another device. Refer to that device's user instructions for more information.

Unpairing Devices

You can remove a paired relationship between devices.

1. From the **Today** screen, tap **Start** > **Bluetooth Manager**.
2. Tap **Tools**, and **Paired devices**.
3. Tap a device name.
4. Tap **Remove**.
5. Tap **Yes** to remove the pairing.

Connecting to Other Devices

Use ActiveSync, serial and dial-up connections to communicate with other Bluetooth devices. Establish a partnership with a cell phone and set up the Bluetooth services it offers.

Identifying the Communications Port

You can identify the virtual COM ports used to create a **serial port** connection. You may need to identify these COM ports for activities such as printing.

Use the inbound COM port when other devices initiate a serial connection. Use the outbound COM port when you initiate a serial connection to another device.

To identify the communications port:

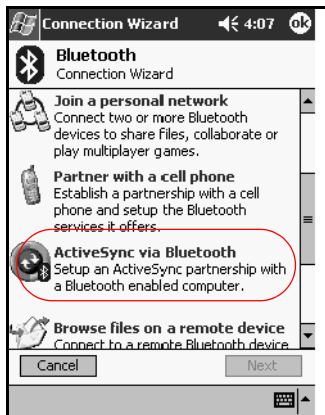
1. From the **Today** screen, tap the **Bluetooth** icon > **Bluetooth Settings**.
2. Tab over to the **Serial Port** tab and tap it.
3. Note the names of your inbound and outbound COM ports.
4. Tap **OK**.

Establishing an ActiveSync Connection

You can set up an ActiveSync partnership with a Bluetooth-enabled computer.

To establish an ActiveSync connection:

1. From the **Today** screen, tap **Start** > **Bluetooth Manager**.
2. Tap **New**, and **Connect**.
3. Tap **ActiveSync via Bluetooth**, and tap **Next**.



4. Follow the connection wizard instructions.

Establishing a Serial Connection

Use the wireless Bluetooth serial port connection just as you would a physical serial cable connection. You must configure the application that will use the connection to the correct serial port.

To establish a serial connection:

1. From the **Today** screen, tap **Start > Bluetooth Manager**.
2. Tap **New**, and **Connect**.
3. Tap **Explore a Bluetooth device**, and tap **Next**.
4. Follow the connection wizard instructions.

Dial-Up Networking

When you use dial-up networking (DUN), the remote device providing the dial-up networking service and the remote computer to which you are connecting must both have telephone access.

Devices that can provide dial-up networking include Bluetooth:

- Mobile phones
- Desktop computers
- Modems

Using Dial-Up Networking

To connect to a device that provides modem access:

1. From the **Today** screen, tap **Start > Bluetooth Manager**.
2. Tap **New** and **Connect**.
3. Tap **Connect to the Internet**, and tap **Next**.
4. Follow the connection wizard instructions.



After you create the dial-up networking shortcut with a device, tap and hold the shortcut icon in the **My Shortcuts** tab of the **Bluetooth Manager**, and tap **Connect**.

5. Tap **New Connection**.

6. Tap **OK**.

7. Enter a name in the **Connection Name** field.

8. Enter a phone number. You must sometimes enter the country code and area code, depending on where you are calling.

9. Tap **OK** to begin dialing.



Some mobile phones require a bond between devices (see the section “Pairing Devices”).

To connect to the Internet and use Pocket Internet Explorer, you must first connect to a Bluetooth phone from Bluetooth Manager. To make this connection the default dial-up connection for Pocket Internet Explorer:

1. From the **Today** screen, tap **Start > Settings > Connections** tab.

2. Tap the **Connections** icon > **Advanced** tab.

3. Tap **Select Networks**.

4. Enable **Bluetooth Settings** from the dropdown list.



The Bluetooth modem connection you created can be viewed only from the Bluetooth Settings on the Connections Task page.

Join a Personal Area Network

Connect two or more Bluetooth devices to share files, collaborate or play multiplayer games.

To establish a Personal Area Network connection:

1. From the **Today** screen, tap **Start** > **Bluetooth Manager**.
2. Tap **New**, and tap **Connect**.
3. Tap **Join a personal network**, and tap **Next**.
4. Follow the Connection Wizard instructions.

Establishing a Cell Phone Partnership

You can establish a partnership with a cell phone, and set up the Bluetooth services it offers.

To establish a cell phone partnership:

1. From the **Today** screen, tap **Start** > **Bluetooth Manager**.
2. Tap **New**, and tap **Connect**.
3. Tap **Partner with a cell phone**, and tap **Next**.
4. Follow the connection wizard instructions.

Working with Files

You can exchange information with a connected device and use the Bluetooth File Explorer to:

- Navigate through the directories.
- View files and folders.
- Create new folders.
- Send and receive files from a remote device.
- Delete and rename files on a remote device.

Creating a File Transfer Connection

1. From the **Today** screen, tap **Start** > **Bluetooth Manager**.
2. Tap **New**, and **Connect**.
3. Tap **Browse files on a remote device**, and tap **Next**.
4. Follow the connection wizard instructions.

Sending Files

1. Tap and hold a file transfer shortcut icon, and tap **Connect**.
2. Tap **File**, and Tap **Send a File...**
3. Locate a file to send.
4. Tap the file to send it.
5. Tap **OK**.

Creating a Folder on a Remote Device

1. Tap and hold a file transfer shortcut icon, and tap **Connect**.
2. Navigate to the location you want for the new folder.
3. Tap **File**, and **Create a folder**.
4. Enter a folder name while **New Folder** is selected, and tap **Enter**.
5. Tap **OK**.

Receiving a File from a Remote Device

1. Tap and hold a file transfer shortcut icon, and tap **Connect**.
2. Navigate to the file location on the remote device.
3. Tap the file.
4. Tap **File**, and tap **Get**.
5. Tap **OK**.

Deleting a File from a Remote Device

1. Tap and hold a file transfer shortcut icon, and tap **Connect**.
2. Navigate to the file location on the remote device.
3. Tap the file.
4. Tap **File**, and tap **Delete**.
5. Tap **Yes** to verify you want to delete the selected file.
6. Tap **OK**.

Using Business Card Exchange

Using the business card exchange, you can:

- Set up your own business card
- Send a business card to one or more devices
- Request a business card from one or more devices
- Exchange business cards with one or more devices

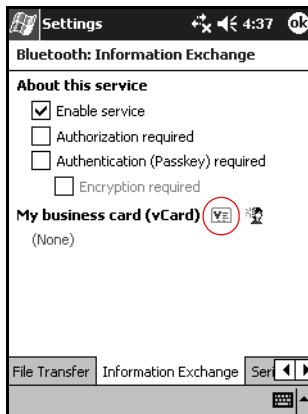
You must establish a default contact name to send or exchange business card information.

You must first specify your default business card on the **Information Exchange** tab in **Bluetooth Settings**. This name becomes the default for business card transfers.

Setting Up Your Business Card Information

To set up your business card information:

1. Create a contact in the **Contacts** program that includes your name, title, and other relevant information.
2. From the **Today** screen, tap the **Bluetooth** icon > **Bluetooth Settings**.
3. Tap the **Information Exchange** tab.
4. Tap the **My business card (vCard)** icon.



5. Choose your contact from the list.
6. Tap **OK**.

Sending Business Cards

1. From the **Today** screen, tap **Start > Bluetooth Manager**.
2. Tap the **Business card** icon.



You can also open the business card exchange by tapping **Tools, Business Card Exchange** in the **Bluetooth Manager**.

3. Tap the **Send** icon.
4. Tap the device where you want to send your business card.
5. Tap **OK**.

Requesting Business Cards

1. From the **Today** screen, tap **Start > Bluetooth Manager**.
2. Tap the **Business card** icon.
3. Tap the **Request** icon.
4. Tap the device from which you want to request a business card.
5. Tap **OK**.

Exchanging Business Cards

You can exchange business card information with another device. If available, the device's information will be sent directly into your **Contacts** list in **Pocket Outlook**.

To exchange business cards:

1. From the **Today** screen, tap **Start** > **Bluetooth Manager**.
2. Tap the **Business card** icon.
3. Tap the **Exchange** icon.
4. Tap the device with which you want to exchange your business card.
5. Tap **OK**.

Opening a Connection

1. From the **Today** screen, tap **Start** > **Bluetooth Manager**.
2. Tap and hold the icon or list name, and tap **Connect**.
3. Tap **OK**.

Viewing Connection Status

You can view:

- Connection's name
- Device's name
- Connection status
- Length of connection
- Signal strength

To view the connection status:

1. From the **Today** screen, tap **Start > Bluetooth Manager**.
2. Tap and hold an active connection icon or list name, and tap **Status**.
3. Tap **OK**.

Closing a Connection

1. From the **Today** screen, tap **Start > Bluetooth Manager**.
2. Tap and hold the connection icon or list name.
3. Tap **Disconnect** from the menu.
4. Tap **OK**.

Viewing Connection Information

1. From the **Today** screen, tap **Start > Bluetooth Manager**.
2. Tap and hold the connection icon or list name.
3. Tap **Properties** from the menu.
4. Tap **OK**.

Working with Connections

You can create shortcuts to open and view status information for all connections.

Creating a Shortcut

Creating a shortcut to one or more services does not establish a connection. It only places a shortcut to that service on the **Shortcut** tab of the **Bluetooth Manager**.

To create a shortcut:

1. From the **Today** screen, tap **Start > Bluetooth Manager**.
2. Tap **New**, and **Connect**.
3. Select a type of service, and tap **Next**.
4. Follow the connection wizard instructions.



Paired devices are designated by a checkmark.

Deleting a Shortcut

1. From the **Today** screen, tap **Start > Bluetooth Manager**.
2. Tap and hold the connection icon or list name to be deleted.
3. Tap **Delete** from the menu.
4. Tap **Yes** to verify the selected shortcut should be deleted.
5. Tap **OK**.

Viewing Shortcuts

You can view shortcuts as icons or in a list format.

1. From the **Today** screen, tap **Start > Bluetooth Manager**.
2. Tap **View**.
3. Tap **List** or **Icon**.
4. Tap **OK**.

Troubleshooting

Common Problems

Use the following suggestions to troubleshoot problems with the iPAQ Pocket PC.

Problem	Solution
I cannot see anything on the screen.	<ul style="list-style-type: none">• Be sure the iPAQ Pocket PC is powered on.• Be sure the iPAQ Pocket PC is connected to the AC Adapter and the USB Synchronization Cable.• Reset the device by using the stylus to lightly press the reset button on the back of the unit.
I cannot keep my battery charged.	<ul style="list-style-type: none">• Always keep the iPAQ Pocket PC connected to the AC adapter when you are not using it.• In the backlight settings, adjust the bar to a lower level to conserve the more battery power.
The backlight keeps turning off.	<ul style="list-style-type: none">• In Backlight Settings, increase the amount of time the backlight stays on if not in use.• Select the option to turn on the backlight when you touch the screen or push a button

Problem	Solution
I want to travel with my iPAQ Pocket PC.	<ul style="list-style-type: none">• Back up your information.• Take a copy of your backup with you on an SD memory card.• Disconnect all external devices.• Take the AC Adapter and Charger Adapter with you.• Keep your iPAQ Pocket PC in a protective case and keep it in your carry-on luggage.
I want to travel internationally with my iPAQ Pocket PC.	Be sure you have the modem, cable, and plug adapter appropriate for the country you are visiting.
I want to ship my iPAQ Pocket PC to a repair facility.	<ol style="list-style-type: none">1. Back up your information.2. Disconnect all external devices.3. Remove the battery, but include it in your shipment.4. Pack your iPAQ Pocket PC and all external devices in protective packaging. Include any additional documentation or items as instructed by Customer Support.
I cannot connect to a network.	<ul style="list-style-type: none">• Be sure you have added the necessary server information.• Be sure the network you are attempting to connect to is not busy.• Be sure the proper drivers for your card are installed.• Be sure your user name and password are correct.• Tap Start > Settings > Connections tab > Connections and check your connection settings.• Be sure the hardware you are using with your iPAQ Pocket PC is properly configured and operational.

Problem	Solution
When I try to open the Inbox, I receive an error or the application hangs.	Limit the number of e-mail services you create.
I get an error when I try to record a note in Calendar or in Tasks.	Try using a more compressed recording format in Calendar or Tasks (8,000 Hz, Mono, [.7 KB/s] is the most compressed format available).
I want to see the current date.	<ol style="list-style-type: none"> 1. From the Start menu, tap Calendar. 2. Tap the Go-to-Today icon to see today's date.
I cannot see all my appointments.	Be sure the appointment you created is in the selected category.
I cannot find the document or workbook I saved.	Pocket Word and Excel recognize and display documents in only one folder below My Documents. For example, if you created another folder in the Personal folder in My Documents, the documents in that folder will not show.
My device is always asking me for a password.	Tap Start > Settings > Personal tab > Password to be sure the password settings are configured as you wish.
I cannot find files sent to me by another device.	Check My Documents, which is the default save location used to receive files.

ActiveSync

For more information on Microsoft ActiveSync, refer to Chapter 2, “Using ActiveSync.”

Problem	Solution
I cannot connect to my computer using the USB Synchronization Cable.	<ul style="list-style-type: none">• Be sure you have installed Microsoft ActiveSync 3.7 or higher on your host computer before connecting your iPAQ Pocket PC to it.• Be sure your iPAQ Pocket PC is connected to the USB Synchronization Cable, and that the sync cable is connected to your computer.• Be sure you are running Microsoft Windows 98SE, Me, 2000, or XP and that you have installed Microsoft ActiveSync 3.7 or a later version on your computer.
I connected my iPAQ Pocket PC before installing Microsoft ActiveSync.	<ol style="list-style-type: none">1. Disconnect the USB Synchronization Cable from your computer.2. If you have Windows 98SE, Me, 2000, or XP, uninstall the USB record.3. Install Microsoft ActiveSync 3.7 or higher.4. Reconnect the iPAQ Pocket PC USB Synchronization Cable.
Microsoft ActiveSync cannot locate my iPAQ Pocket PC when I synchronize.	<ul style="list-style-type: none">• Be sure the device is on.• Be sure all cables are securely connected.• Remove your iPAQ Pocket PC from the USB Synchronization Cable, power on the unit by pressing the Power button, and connect it back to the USB Synchronization Cable.• Reset the device by using the stylus to lightly press the Reset button on the back of the unit.• Check Connection Settings in ActiveSync on your personal computer to ensure the communications port you are using is active.

Problem	Solution
I cannot open e-mail in the Inbox after I restore using Microsoft ActiveSync.	Use Microsoft ActiveSync to synchronize your iPAQ Pocket PC with your personal computer. For more information, refer to the "Synchronizing with Your Computer" section in Chapter 2.
I tried to synchronize a workbook and the file is unresolved in Microsoft ActiveSync.	Pocket Excel does not support all Excel formatting; therefore, Microsoft ActiveSync cannot synchronize the file.

Bluetooth

For more information on Bluetooth (h1940 models only), refer to Chapter 8, “Using Bluetooth.”

Problem	Solution
I cannot discover another device.	<ul style="list-style-type: none">• Move closer to the device.• Be sure the Bluetooth radio is turned on.• Be sure you have not limited your ability to see devices.• Be sure the device you are attempting to connect to is on and allows access to being discovered by other devices.
I can see other devices, but I cannot connect or exchange data with them.	<ul style="list-style-type: none">• Move closer to the device.• Be sure the Bluetooth radio is turned on.• Be sure the other device has not restricted your access.
Other devices cannot find or connect to my device.	<ul style="list-style-type: none">• Move closer to the device.• Be sure the Bluetooth radio is turned on.• Be sure you have not restricted other devices from finding yours.• Check your Bluetooth settings to ensure you have allowed your device to be discovered and others to connect.
Other devices do not receive my correct business card information.	<ul style="list-style-type: none">• Be sure you have correctly set up your business card information in Bluetooth Settings.• Check Bluetooth Settings to be sure you have not restricted this function.

Expansion Cards

For more information on expansion cards, refer to Chapter 6, “Using Expansion Cards.”

Problem	Solution
I cannot get my iPAQ Pocket PC to recognize the expansion card.	Be sure you have firmly pushed the expansion card down into the iPAQ Pocket PC. Make sure third party SDIO drivers are installed.
I cannot insert my card.	<ul style="list-style-type: none"> • Be sure you are not inserting the card at an angle. • Be sure you insert the connection area first.
I cannot remove my SDIO card.	Push the SDIO card in to release the locking mechanism. The card will pop out slightly and can and be easily removed.
My iPAQ Pocket PC cannot recognize my card.	<ul style="list-style-type: none"> • Reset the device by using the stylus to lightly press the Reset button on the side of the unit. • Be sure you loaded any drivers that came with the purchased expansion card.

Regulatory Notices

Federal Communications Commission Notice

This equipment has been tested and found to comply with the limits for a Class B digital device, pursuant to Part 15 of the FCC Rules. These limits are designed to provide reasonable protection against harmful interference in a residential installation. This equipment generates, uses, and can radiate radio frequency energy and, if not installed and used in accordance with the instructions, may cause harmful interference to radio communications. However, there is no guarantee that interference will not occur in a particular installation. If this equipment does cause harmful interference to radio or television reception, which can be determined by turning the equipment off and on, the user is encouraged to try to correct the interference by one or more of the following measures:

- Reorient or relocate the receiving antenna
- Increase the separation between the equipment and receiver
- Connect the equipment into an outlet on a circuit different from that to which the receiver is connected
- Consult the dealer or an experienced radio or television technician for help

Modifications

The FCC requires the user to be notified that any changes or modifications made to this device that are not expressly approved by Hewlett-Packard Company may void the authority to operate the equipment.

Cables

Connections to this device must be made with shielded cables with metallic RFI/EMI connector hoods in order to maintain compliance with FCC Rules and Regulations.

Declaration of Conformity for products marked with the FCC logo—United States only

This device complies with Part 15 of the FCC Rules. Operation is subject to the following two conditions: (1) this device may not cause harmful interference, and (2) this device must accept any interference received, including interference that may cause undesired operation.

For questions regarding your product, contact:

Hewlett-Packard Company
P. O. Box 692000, Mail Stop 530113
Houston, Texas 77269-2000

Or, call 1-800-652-6672

For questions regarding this FCC declaration, contact:

Hewlett-Packard Company
P. O. Box 692000, Mail Stop 510101
Houston, Texas 77269-2000

Or, call (281) 514-3333

To identify this product, refer to the Part, Series, or Model number found on the product.

Canadian Notice

This Class B digital apparatus meets all requirements of the Canadian Interference-Causing Equipment Regulations.

Avis Canadien

Cet appareil numérique de la classe B respecte toutes les exigences du Règlement sur le matériel brouilleur du Canada.

Japanese Notice

この装置は、情報処理装置等電波障害自主規制協議会（VCCI）の基準に基づくクラスB情報技術装置です。この装置は、家庭環境で使用することを目的としていますが、この装置がラジオやテレビジョン受信機に近接して使用されると、受信障害を引き起こすことがあります。

取扱説明書に従って正しい取り扱いをして下さい。

European Union Notice



Products bearing the CE marking comply with the R&TTE Directive (1999/5/EC), EMC Directive (89/336/EEC), and the Low Voltage Directive (73/23/EEC) issued by the Commission of the European Community.

Compliance with these directives implies conformity to the following European Norms (in parentheses are the equivalent international standards and regulations):

- EN 55022 (CISPR 22)—Electromagnetic Interference
- EN 55024 (IEC61000-4-2, 3, 4, 5, 6, 8, 11)—
Electromagnetic Immunity
- EN61000-3-2 (IEC61000-3-2)—Power Line Harmonics
- EN61000-3-3 (IEC61000-3-3)—Power Line Flicker
- EN 60950 (IEC 60950)—Product Safety
- ETS 300 328—Technical requirements for radio equipment
- ETS 300 826 or EN 301 489-17—General EMC
requirements for radio equipment

This product may be used in all EU and EFTA countries.

Battery Warning



WARNING: This computer contains a lithium ion rechargeable battery pack. To reduce the risk of fire or burns, do not disassemble, crush, puncture, short external contacts, or dispose of in fire or water.



CAUTION: Danger of explosion if battery is incorrectly replaced. Replace only with the same or equivalent type recommended by the manufacturer. Dispose of used batteries according to the manufacturer's instructions.



Because of the type of battery used in your h1930 and h1940 Series, follow local regulations regarding the safe disposal of the battery. Your vendor can advise you on local regulations, and/or the existence of any battery disposal programs in operation.

Equipment Warning



WARNING: To reduce the risk of personal injury, electrical shock, fire or damage to the equipment:

- Plug the AC adapter into a grounded (earthed) electrical outlet that is easily accessible at all times.
 - Disconnect power from the equipment by unplugging the AC adapter from the electrical outlet or unplugging the Synchronization cable from the host computer.
 - Do not place anything on the AC adapter cord or any of the other cables. Arrange them so that no one may accidentally step on or trip over them.
 - Do not pull on a cord or cable. When unplugging from the electrical outlet, grasp the cord by the plug or, in the case of the AC adapter, grasp the AC adapter and pull out from the electrical outlet.
 - Do not use converter kits sold for appliances to power the iPAQ h1930 and h1940 Series.
-

Airline Travel Notice

Use of electronic equipment aboard commercial aircraft is at the discretion of the airline.

Wireless Notices

In some situations or environments, the use of wireless devices may be restricted. Such restrictions may apply aboard airplanes, in hospitals, near explosives, in hazardous locations, etc.

If you are uncertain of the policy that applies to the use of this device, please ask for authorization to use it prior to turning it on.

U.S. Regulatory Wireless Notice

This product emits radio frequency energy, but the radiated output power of this device is far below the FCC radio frequency exposure limits. Nevertheless, the device should be used in such a manner that the potential for human contact with the antenna during normal operation is minimized.

Canadian Regulatory Wireless Notice

Operation is subject to the following two conditions: (1) this device may not cause interference, and (2) this device must accept any interference, including interference that may cause undesired operation of the device.

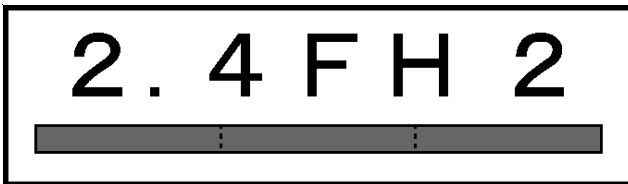
The term “IC:” before the certification/registration number only signifies that the Industry Canada technical specifications were met.

Japanese Regulatory Wireless Notice

この機器の使用周波数帯では、電子レンジ等の産業・科学・医療用機器のほか工場の製造ライン等で使用されている移動体識別用の構内無線局（免許を要する無線局）及び特定小電力無線局（免許を要しない無線局）が運用されています。

- 1 この機器を使用する前に、近くで移動体識別用の構内無線局及び特定小電力無線局が運用されていないことを確認して下さい。
- 2 万一、この機器から移動体識別用の構内無線局に対して電波干渉の事例が発生した場合には、速やかに使用周波数を変更するか又は電波の発射を停止した上、下記連絡先にご連絡頂き、混信回避のための処置等（例えば、パーティションの設置など）についてご相談して下さい。
- 3 その他、この機器から移動体識別用の特定小電力無線局に対して電波干渉の事例が発生した場合など何かお困りのことが起きたときは、次の連絡先へお問い合わせ下さい。

連絡先：日本ヒューレット・パッカド株式会社 TEL：0120-014121



Brazilian Regulatory Wireless Notice

Este equipamento opera em caráter secundário, isto é, não tem direito a proteção contra interferência prejudicial, mesmo de estações do mesmo tipo, e não pode causar interferência a sistemas operando em caráter primário.

Specifications

System Specifications



Not all models described are available in all regions.

System Feature	Description
Processor	h1940 Models: Samsung S3C2410 266 MHz h1930 Models: Samsung S3C2410 203 MHz
RAM (Random Access Memory)	64 MB SDRAM (56 MB main memory) h1935 Models (56 MB main memory) h1930, h1937, h1940, h1945 Models (56 MB main memory)
iPAQ File Store (nonvolatile memory)	h1940, h1945 Models: 14 MB Storage (not available in Korean, Japanese, Traditional Chinese, and Simplified Chinese versions)
SD I/O slot	SD memory and SDIO card support
Display	3.5 inch transfective color TFT, 240 x 320 pixels, 64K-color support.
LED Backlight	Multi-level brightness adjustment
Audio	Microphone, speaker, 2.5 mm stereo audio jack, MP3 stereo through audio jack
Infrared (IrDA)	IrDA, data transfer up to 115.2 Kb per second

System Feature	Description
Bluetooth (h1940, h1945 only)	Class II device; typical 10 meters (30 feet) range
Indicators	3-mode alarm notification: Flashing green LED, tone, pop-up message Charging: flashing amber LED Charged: solid amber LED Bluetooth active: flashing blue LED
Battery	Removable/rechargeable 900mAh Lithium ion battery with internal backup battery to maintain data during main battery replacement.

Physical Specifications

hp iPAQ h1930 and h1940 Series

	US	Metric
Length	4.46 in	113.3 mm
Width	2.75 in	69.8 mm
Depth	0.50 in	12.8 mm
Weight	4.37 oz	124 g

Operating Environment

Environment

		US	Metric
Temperature	Operating	32° to 104° F	0° to 40° C
	Nonoperating	-4° to 140° F	-20° to 60° C
Relative Humidity	Operating	up to 80%	up to 80%
	Nonoperating	up to 80%	up to 80%
Maximum Altitude	Operating	0-15,000 ft	0-4572 m
	Nonoperating	0-15,000 ft	0-4572 m

Index

A

- AC Adapter 3–4
- ActiveSync 1–3, 4–17
 - backing up 2–6
 - backing up/restoring 4–18
 - connecting 2–2
 - Explore 2–5
 - installing 2–3
 - restoring 2–6
 - troubleshooting 9–4
 - uses 2–1
- aligning the screen 1–10
- applications
 - closing 4–9
 - installing 2–6, 4–10
 - opening 4–8
- Asset Viewer 1–2

B

- backing up files 4–17
 - ActiveSync 2–6, 4–18
 - iPAQ Backup 4–17
- backlight settings 3–7, 9–1
- backup battery 3–1
- basics
 - learning the 4–1
- battery
 - backlight settings 3–7
 - backup 3–1
 - charging 3–6
 - installing 3–1
 - monitoring manually 3–8
 - preserving battery time 3–7
 - recharging 3–1
 - removing 3–5
 - spare 3–1
 - specifications B–2
 - troubleshooting 9–1
- Block Recognizer 5–1, 5–8
- Bluetooth 1–2, 2–2
 - ActiveSync connection 8–19
 - creating shortcuts 8–28
 - dial-up networking 8–20
 - pairing devices 8–6, 8–8
 - properties 8–6
 - sending files 8–23
 - settings 8–5
 - shared folder 8–11
 - specifications B–2
 - supported services 8–4
 - terms 8–3
 - troubleshooting 9–6
 - turning on 8–5, 8–6
 - using 8–1
- Bluetooth Manager 8–15
- business card

exchanging information 8–27

C

care and maintenance 1–10
cell phone partnership 8–22
Charger Adapter plug 3–1
Command bar 4–2
CompactFlash (CF) expansion
 card 6–2
connecting
 to a computer 2–2
 to the Internet 7–1
 to your work network 7–1
connecting to a network 9–2
connecting to other devices 8–18
Connection Settings 2–5
converting writing to text 5–9
cradle 2–2, 2–3, 3–1

D

data
 backing up 1–2
 stored in RAM 3–1
date
 set 1–7
dial-up networking 8–20
digital files 1–4
drawing on screen 5–9

E

e-mail
 sending and receiving 2–7
 synchronizing 2–2
expansion cards
 CompactFlash (CF) 6–2
 memory card 6–4
 Secure Digital (SDIO) 6–2

troubleshooting 9–7
 using 6–1

F

Favorites list 7–4
full reset 1–9, 1–10

H

hard reset 1–9
Help
 accessing 1–1

I

icons 4–3
infrared 2–2, 2–3
 specifications B–1
input methods
 Block Recognizer 5–1
 keyboard 5–1
 Letter Recognizer 5–1
 Microsoft Transcriber 5–1
installing
 applications 4–10
installing ActiveSync 2–3
installing applications 2–6
installing the battery 3–1
Internet
 connecting 7–1
Internet address 7–3
iPAQ
 Backup 1–2, 4–17
 File Store 4–18
 Image Viewer 1–2
 creating a slide show 4–12

K

keyboard 5–1

L

Letter Recognizer 5-1, 5-5
Link Key 8-8
linking to Web sites 2-7, 7-2

M

maintenance 1-10
memory
 RAM 3-1, 3-5, B-1
 ROM 3-5, B-1
memory cards 9-2
 view content 6-4
Microsoft
 ActiveSync 1-3, 2-1
 Calculator 1-3
 Calendar 1-3
 Connections 1-3
 Contacts 1-3
 Inbox 1-3, 2-7
 Notes 1-3
 Pocket Excel 1-3, 9-3, 9-5
 Pocket Internet Explorer 1-3,
 2-7
 Pocket PC Basics 1-1
 Pocket Word 1-4, 9-3
 Settings 1-4
 Tasks 1-4
 Terminal Services Client 1-4
 Transcriber 5-1, 5-7
 Windows Media Player 9
 Series 1-4
Mobile Favorites 2-7
monitoring the battery 3-8
MP3 1-4

N

Navigation bar 4-2

network, connecting 7-1
normal reset 1-8

O

on-screen keyboard 5-4
options
 spare battery 3-1
owner information 1-7

P

pairing devices 8-16
 settings 8-8
passwords 9-3
pop-up menus 4-4
power indicator 3-6
private network, connecting to 7-2
problems
 troubleshooting 9-1

R

RAM 3-1, 3-5
 specifications B-1
receiving e-mail 2-7
removing the battery 3-5
reset
 full 1-9, 1-10
 normal 1-8
Reset button 1-8, 1-9
restoring files
 ActiveSync 2-6, 4-18
 iPAQ Backup 4-17
ROM 3-5
 specifications B-1
routine care 1-10

S

screen
 aligning 1-10

- drawing and writing on the 5–9
- Self-Test 1–2
- sending e-mail 2–7
- set
 - date 1–7
 - time, home location 1–6
 - time, visiting location 1–6
- shipping the iPAQ Pocket PC 9–2
- slide show 4–12
- soft reset 1–8
- spare battery 3–1
- specifications B–1
- status icons 4–3
- stylus 1–5
 - drag 1–5
 - tap 1–5
 - tap and hold 1–5
 - writing with the 5–5, 5–7, 5–8
- synchronization cradle 2–2, 2–3, 3–1
- synchronizing 1–3
 - changing settings 2–4
 - e-mail 2–2
 - links to Web sites 2–7, 7–2
 - with your computer 2–2

T

- time
 - set for home location 1–6
 - set for visiting location 1–6
- Today screen 1–3, 1–4, 1–7, 4–1
 - creating new information 4–5
 - customizing 4–6
 - using 4–1
- Transcriber 5–7
- traveling with the iPAQ Pocket PC 9–2
- troubleshooting 9–1
 - ActiveSync problems 9–4
 - battery problems 9–1
 - Bluetooth problems 9–6
 - expansion card problems 9–7

U

- USB Synchronization
 - Cradle/Charger 2–2, 2–3, 3–1

W

- Web sites
 - synchronizing links 2–7, 7–2
- Windows Media 1–4
- wireless connection 2–2, 2–3
- writing on screen 5–9

