

EXHIBIT F



US006765591B2

(12) **United States Patent**
Poisson et al.

(10) **Patent No.:** **US 6,765,591 B2**
(45) **Date of Patent:** ***Jul. 20, 2004**

(54) **MANAGING A VIRTUAL PRIVATE NETWORK**

(75) Inventors: **Matthew W. Poisson**, Manchester, NH (US); **Melissa L. Desroches**, Kingston, NH (US); **James M. Milillo**, Manchester, NH (US)

(73) Assignee: **Nortel Networks Limited**, St. Laurent (CA)

(*) Notice: This patent issued on a continued prosecution application filed under 37 CFR 1.53(d), and is subject to the twenty year patent term provisions of 35 U.S.C. 154(a)(2).

Subject to any disclaimer, the term of this patent is extended or adjusted under 35 U.S.C. 154(b) by 0 days.

(21) Appl. No.: **09/285,424**

(22) Filed: **Apr. 2, 1999**

(65) **Prior Publication Data**

US 2003/0030662 A1 Feb. 13, 2003

(51) **Int. Cl.**⁷ **G06F 3/00**

(52) **U.S. Cl.** **345/735; 345/734; 345/733; 345/853**

(58) **Field of Search** **345/735, 734, 345/733, 736, 769, 764, 810, 853, 969, 841, 854, 855, 771, 835; 709/203, 224, 223, 220, 221**

(56) **References Cited**

U.S. PATENT DOCUMENTS

5,751,967 A 5/1998 Raab et al.
5,802,286 A 9/1998 Dere et al.
5,825,891 A 10/1998 Levesque et al.
5,862,339 A 1/1999 Bonnaure et al.
5,864,604 A * 1/1999 Moen et al. 379/114.2
5,864,666 A 1/1999 Shrader 713/201

5,926,463 A 7/1999 Ahearn et al.
5,963,913 A 10/1999 Henneuse et al.
5,966,128 A 10/1999 Savage et al.
5,978,848 A 11/1999 Maddalozzo et al.
5,987,135 A 11/1999 Johnson et al.
5,987,513 A 11/1999 Prithviraj et al. 709/223
6,041,166 A 3/2000 Hart et al.
6,041,347 A 3/2000 Harsham et al. 709/220
6,046,742 A * 4/2000 Chari 345/734
6,061,334 A 5/2000 Berlovitch et al. 370/255
6,075,776 A 6/2000 Tanimoto et al. 370/254

(List continued on next page.)

FOREIGN PATENT DOCUMENTS

EP 0 838 930 A2 4/1998
WO WO 97/50210 12/1997

OTHER PUBLICATIONS

Rooney, Sean, et al., "The Tempest: A Framework for Safe, Resource-Assured, Programmable Networks," IEEE Communications Magazine, Oct. 1998, pp. 42-53.

Kositpaiboon, Rungroj, et al., "Customer Network Management for B-ISDN/ATM Services," Communications, 1993. ICC 1993 Geneva, Technical Program, Conference Record, IEEE International Conference.

Configuring and Maintaining Networks with Optivity NET Configurator 2.0 Manual, Bay Networks, Oct. 1998.

New Oak Communications Extranet Access Switch Administrator's Guide Manual, Dec. 1997.

Primary Examiner—John Cabeca

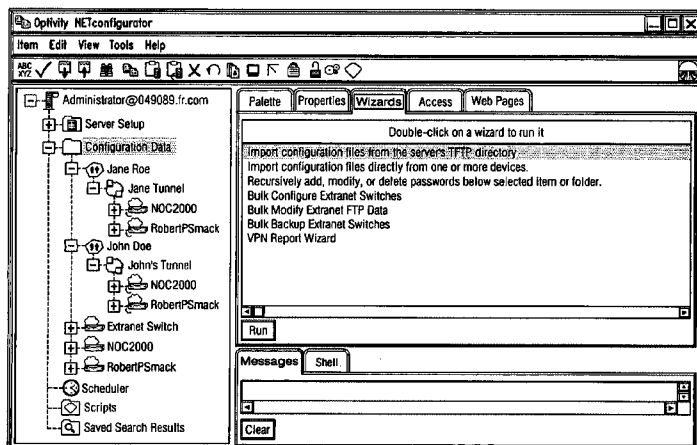
Assistant Examiner—Kieu D. Vu

(74) *Attorney, Agent, or Firm*—Kevin L. Smith

(57) **ABSTRACT**

Managing a virtual private network includes providing a graphical user interface for displaying one or more virtual private network subscribers and one or more computers offering virtual private network functions. The graphical user interface is programmed to display tunnels associated with either the subscribers and/or the computers offering virtual private network functions based on user input.

10 Claims, 36 Drawing Sheets



U.S. PATENT DOCUMENTS

6,079,020	A	*	6/2000	Liu	713/201	6,243,815	B1	6/2001	Antur et al.	
6,085,238	A		7/2000	Yuasa et al.	709/223	6,256,739	B1	7/2001	Skopp et al.	
6,085,243	A		7/2000	Fletcher et al.	709/224	6,259,448	B1	* 7/2001	McNally et al.	345/733
6,092,113	A	*	7/2000	Maeshima	709/230	6,272,537	B1	* 8/2001	Kekic et al.	709/223
6,092,200	A		7/2000	Muniyappa et al.		6,282,175	B1	8/2001	Steele et al.	370/254
6,115,736	A		9/2000	Devarakonda et al.	709/202	6,286,050	B1	9/2001	Pullen et al.	709/229
6,148,337	A		11/2000	Estberg et al.	709/224	6,304,909	B1	10/2001	Mullaly et al.	
6,188,691	B1		2/2001	Barkai et al.	370/390	6,308,206	B1	10/2001	Singh	709/223
6,205,488	B1		3/2001	Casey et al.	709/238	6,330,562	B1	12/2001	Boden et al.	
6,209,031	B1		3/2001	Casey et al.		6,369,840	B1	4/2002	Barnett et al.	
6,219,699	B1		4/2001	McCloghrie et al.	709/221	6,374,293	B1	4/2002	Dev et al.	709/220
6,223,218	B1		4/2001	Iijima et al.	709/221	6,374,296	B1	4/2002	Lim et al.	709/225
6,226,751	B1		5/2001	Arrow et al.	713/201	6,408,336	B1	6/2002	Schneider et al.	
6,233,618	B1		5/2001	Shannon		6,526,442	B1	2/2003	Stupek, Jr. et al.	

* cited by examiner

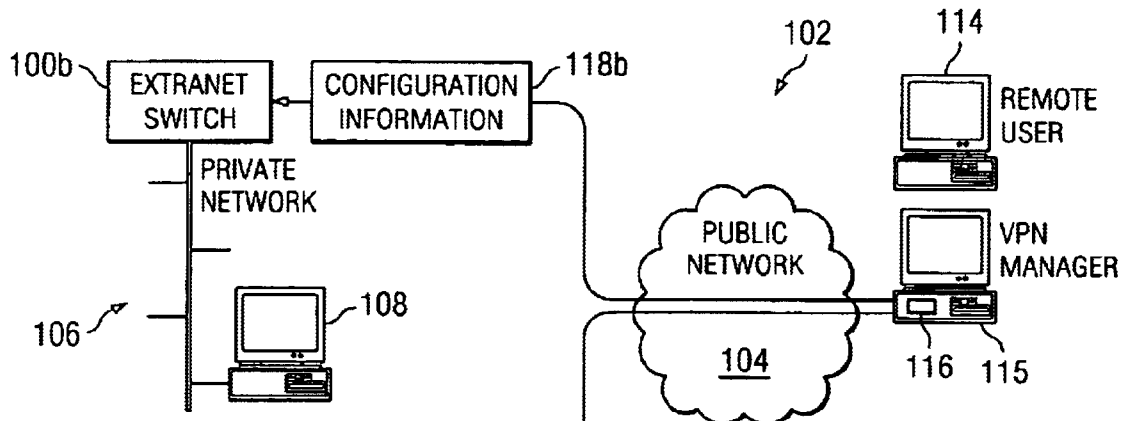


FIG. 1

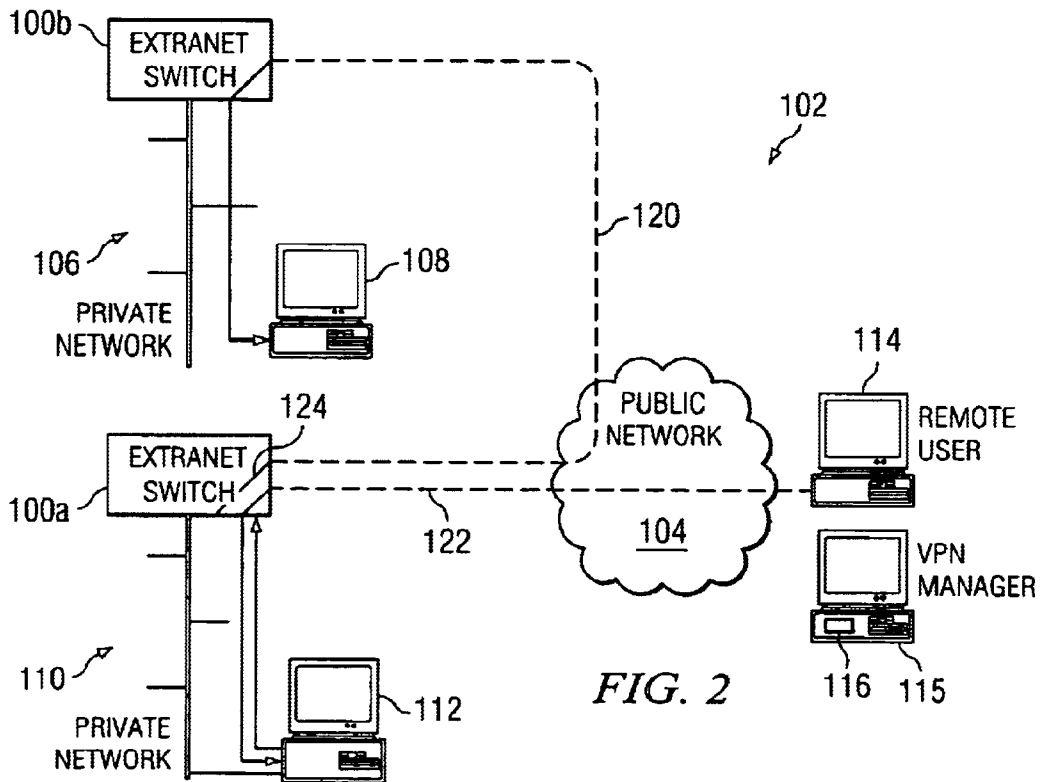


FIG. 2

FIG. 3

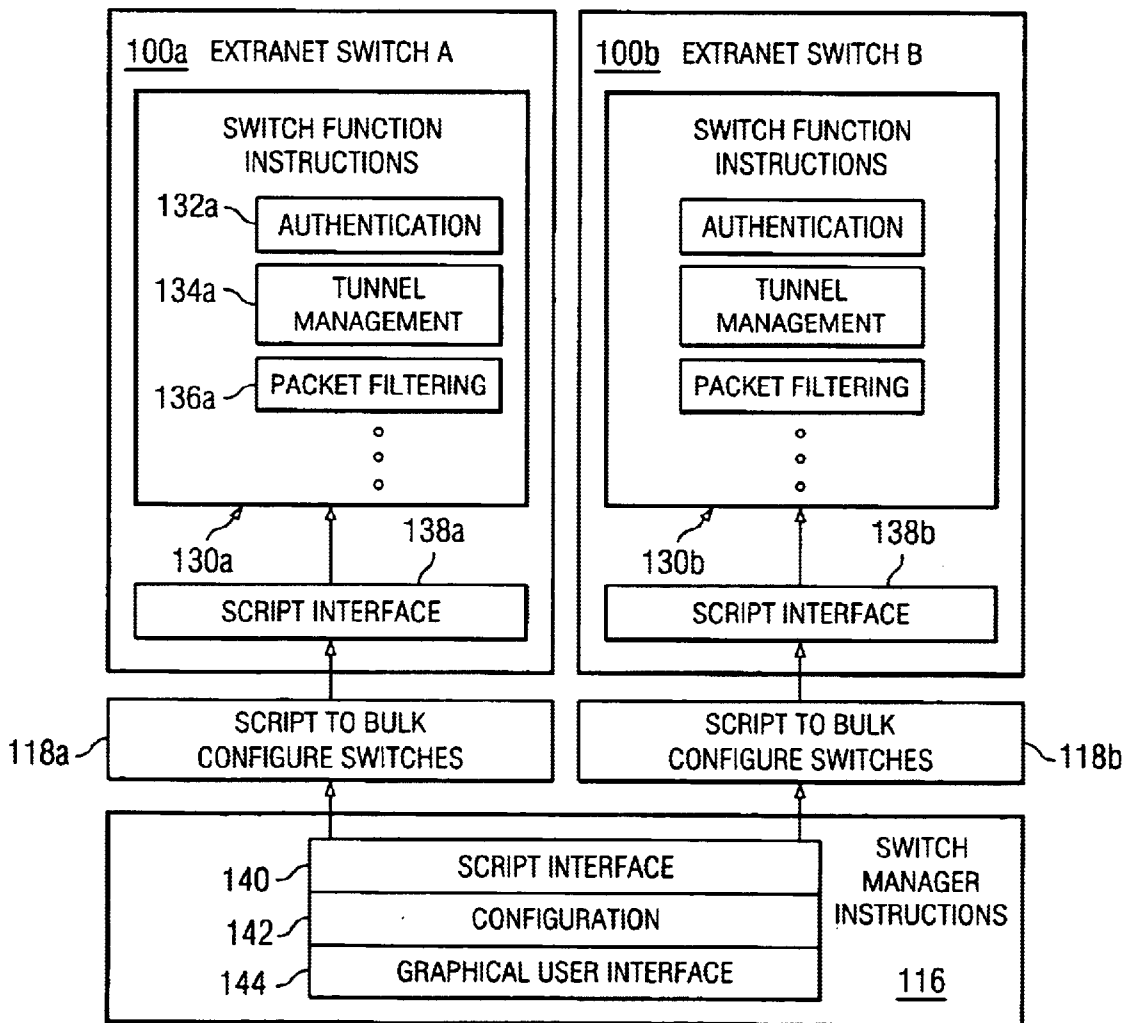
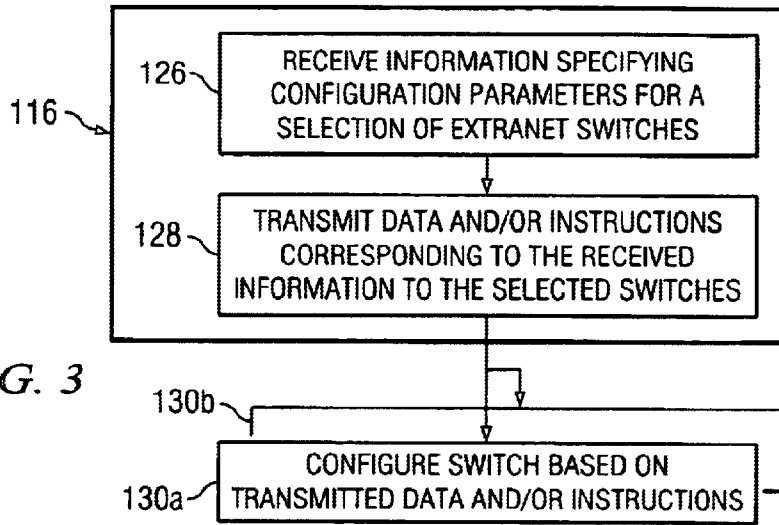


FIG. 4

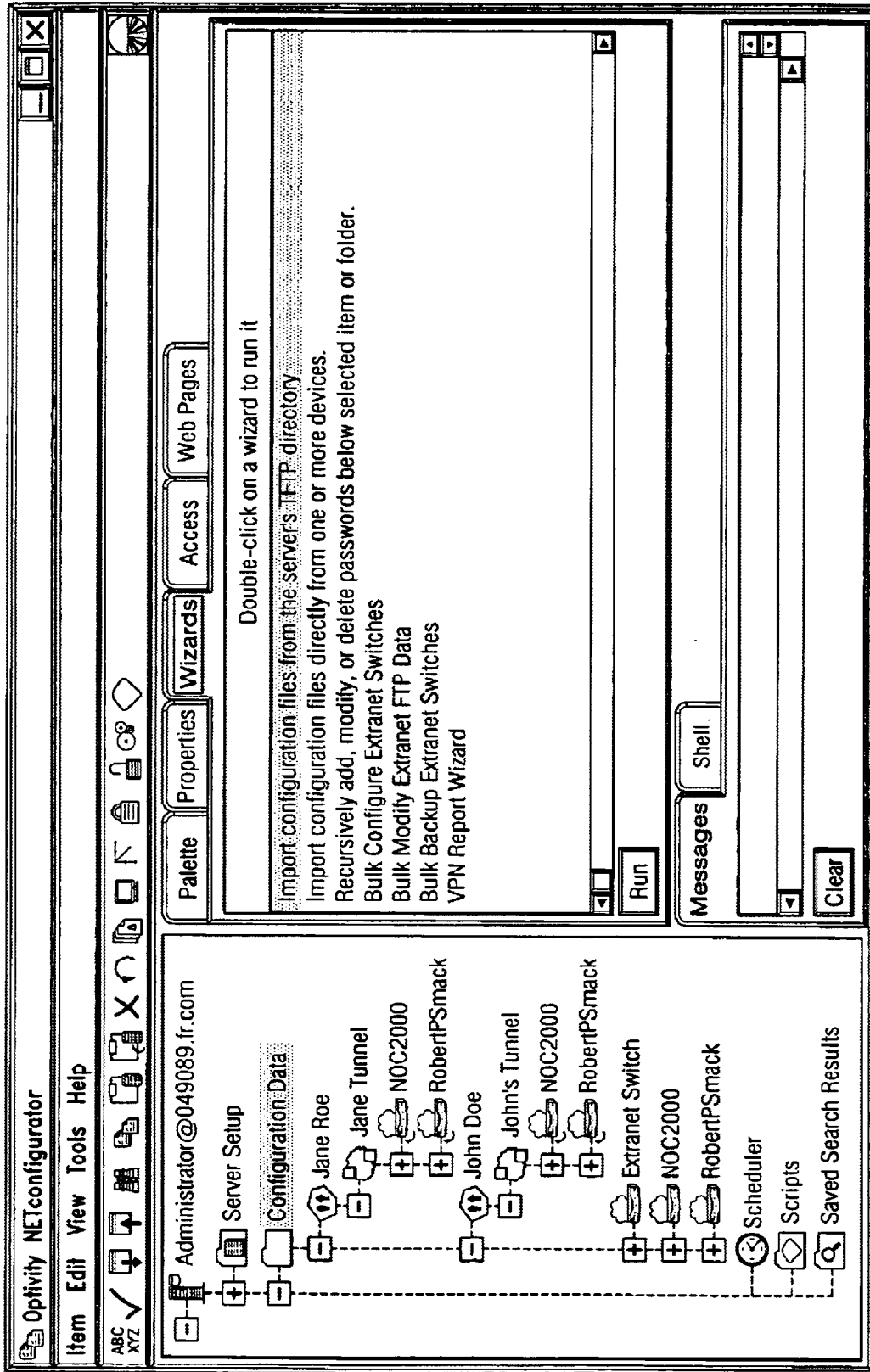


FIG. 5

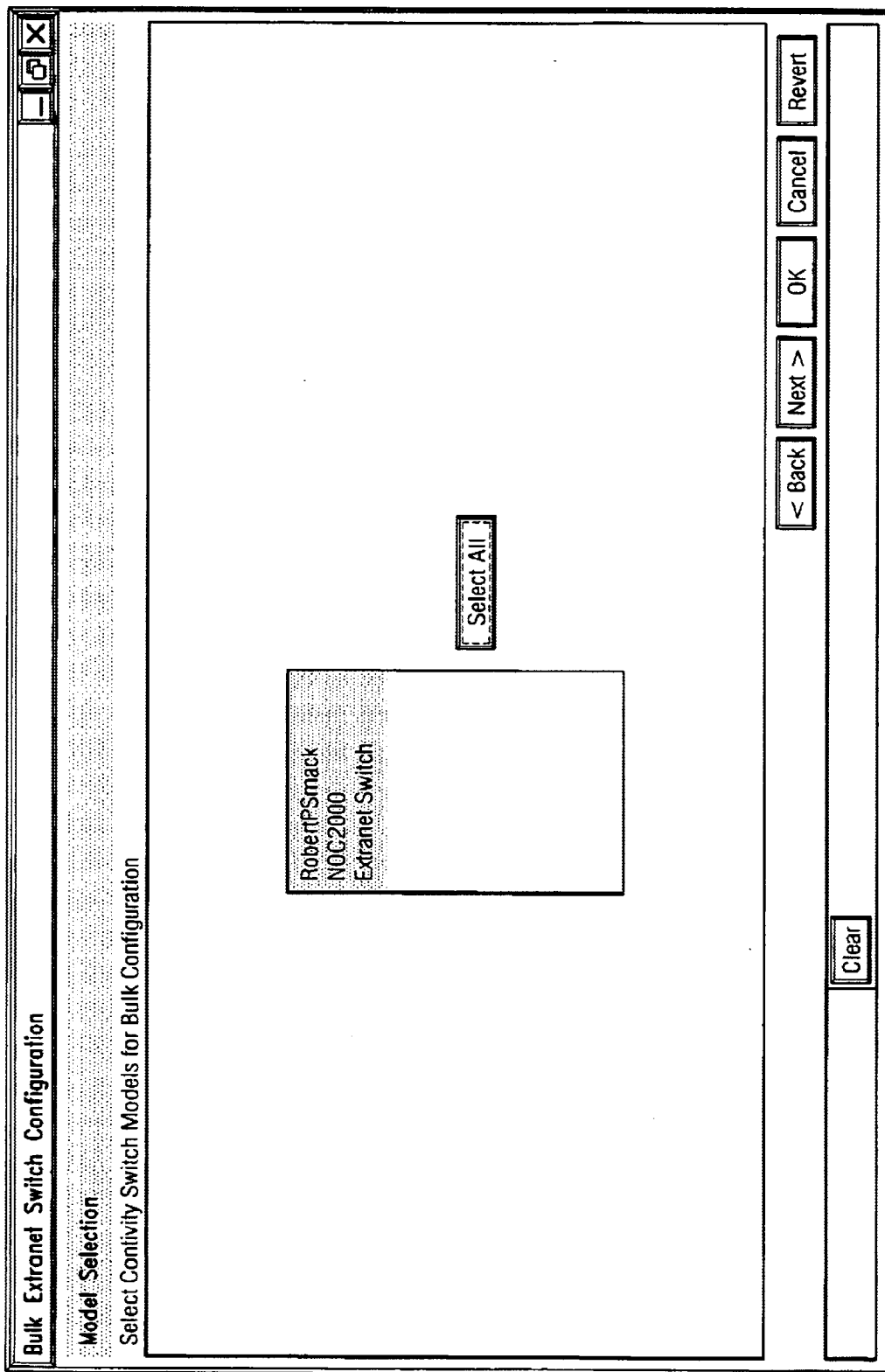


FIG. 6

Bulk Extranet Switch Configuration

Administrator
Administrator settings of the Extranet Switch model type

User ID
Password
Idle Timeout

< Back Next > OK Cancel Revert

Clear

FIG. 7

The image shows a graphical user interface window titled "Bulk Extranet Switch Configuration". The window has a standard Windows-style title bar with minimize, maximize, and close buttons. Below the title bar, the text "DNS Configuration" is displayed, followed by "DNS settings of the Extranet Switch model type". The main area of the window contains four vertically stacked text labels, each followed by an empty rectangular input field:

- DNS Domain Name
- Primary DNS Server
- Secondary DNS Server
- Tertiary DNS Server

At the bottom of the window, there is a horizontal bar containing a "Clear" button. On the right side of the window, there is a vertical stack of buttons: "< Back", "Next >", "OK", "Cancel", and "Revert".

FIG. 8

Bulk Extranet Switch Configuration

Service

Service settings of the Extranet Switch model type

<input type="checkbox"/> IP Sec	<input type="checkbox"/> Private	<input type="checkbox"/> Public
<input type="checkbox"/> PPTP	<input type="checkbox"/> Private	<input type="checkbox"/> Public
<input type="checkbox"/> L2TP & L2F	<input type="checkbox"/> Private	<input type="checkbox"/> Public
<input type="checkbox"/> HTTP	<input type="checkbox"/> Private	
<input type="checkbox"/> SNMP	<input type="checkbox"/> Private	
<input type="checkbox"/> FTP	<input type="checkbox"/> Private	
<input type="checkbox"/> TELNET	<input type="checkbox"/> Private	
<input type="checkbox"/> Allow End User to End User		
<input type="checkbox"/> Allow End User to Branch Office		
<input type="checkbox"/> Allow Branch Office to Branch Office		

FIG. 9

Bulk Extranet Switch Configuration

SNMP Traps

SNMP Trap settings of the SNMP model type

Enable	Host Name	Description	Community Name
<input type="checkbox"/>	<input type="text"/>	Trap on health warnings	<input type="text"/>
<input type="checkbox"/>	<input type="text"/>	Trap on health alerts	<input type="text"/>
<input type="checkbox"/>	<input type="text"/>	Generate periodic heartbeat	<input type="text"/>
<input type="checkbox"/>		Trap on hardware warnings and alerts	<input type="text"/>
<input type="checkbox"/>		Trap on intrusions	<input type="text"/>
<input type="checkbox"/>		Trap on failed login attempts	<input type="text"/>
<input type="checkbox"/>		Generate power up trap	<input type="text"/>

Interval (hh:mm:ss)

Navigation: < Back, Next >, OK, Cancel, Revert

Clear

FIG. 10

Bulk Extranet Switch Configuration

Radius Accounting
Radius Accounting settings of the Extranet Switch model type

Enable Radius Accounting

Enable Internal Radius Accounting

Session Update Interval (hh:mm:ss)

Enable External Radius Accounting

Host Name

Port

Secret

Clear

< Back Next > OK Cancel Revert

FIG. 11

Bulk Extranet Switch Configuration

Radius Authentication

Radius Authentication settings of the Contivity Switch model type

Enable Radius Authentication

Remove Suffix from User ID

Enable AXENT Authentication

Enable SecurID Authentication

Enable MS-CHAP Authentication

Enable CHAP Authentication

Enable PAP Authentication

Enable Primary Server

Primary Host Name

Primary Port

Primary Secret

Enable Alternate 1 Server

Alternate 1 Host Name

Alternate 1 Port

Alternate 1 Secret

Enable Alternate 2 Server

Alternate 2 Host Name

Alternate 2 Port

FIG. 12

Bulk Extranet Switch Configuration

External: LDAP

External LDAP Server settings of the Conivity Switch model type

Enable External LDAP Server

Base DN	<input type="text"/>
Remove Suffix From UI	<input type="checkbox"/>
Delimiter	<input type="text"/>
Master Host Name	<input type="text"/>
Master Connection	<input type="text"/> PORT <input type="text"/>
Master Port	<input type="text"/>
Master Bind DN	<input type="text"/>
Master Password	<input type="text"/>
Slave 1 Host Name	<input type="text"/>
Slave 1 Connection	<input type="text"/> PORT <input type="text"/>
Slave 1 Port	<input type="text"/>
Slave 1 Bind DN	<input type="text"/>
Slave 1 Password	<input type="text"/>
Slave 2 Host Name	<input type="text"/>
Slave 2 Connection	<input type="text"/> PORT <input type="text"/>
Slave 2 Port	<input type="text"/>

FIG. 13

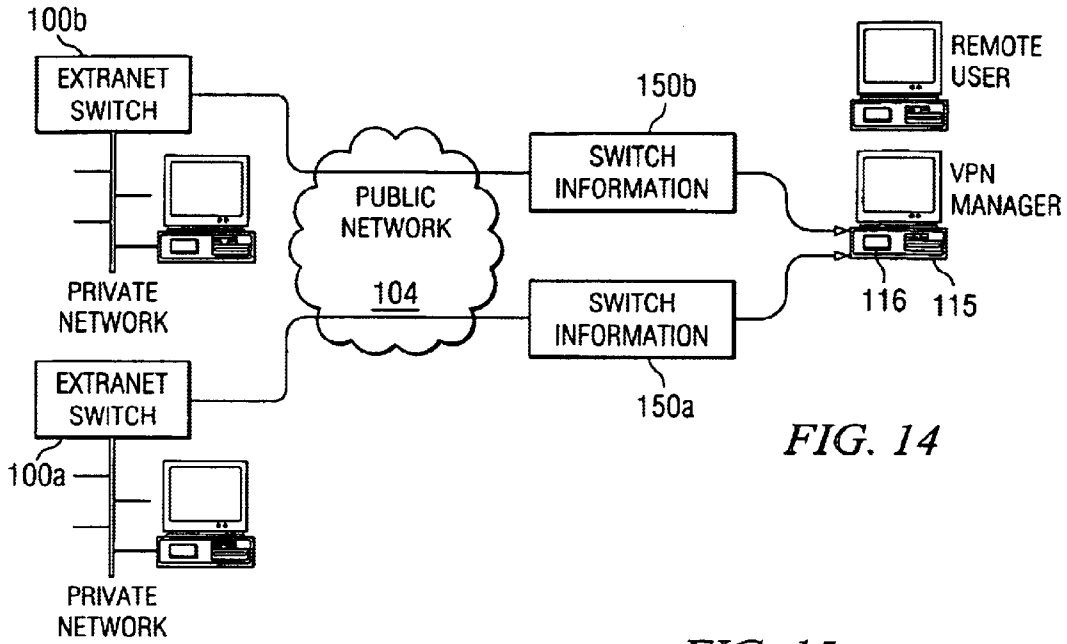


FIG. 14

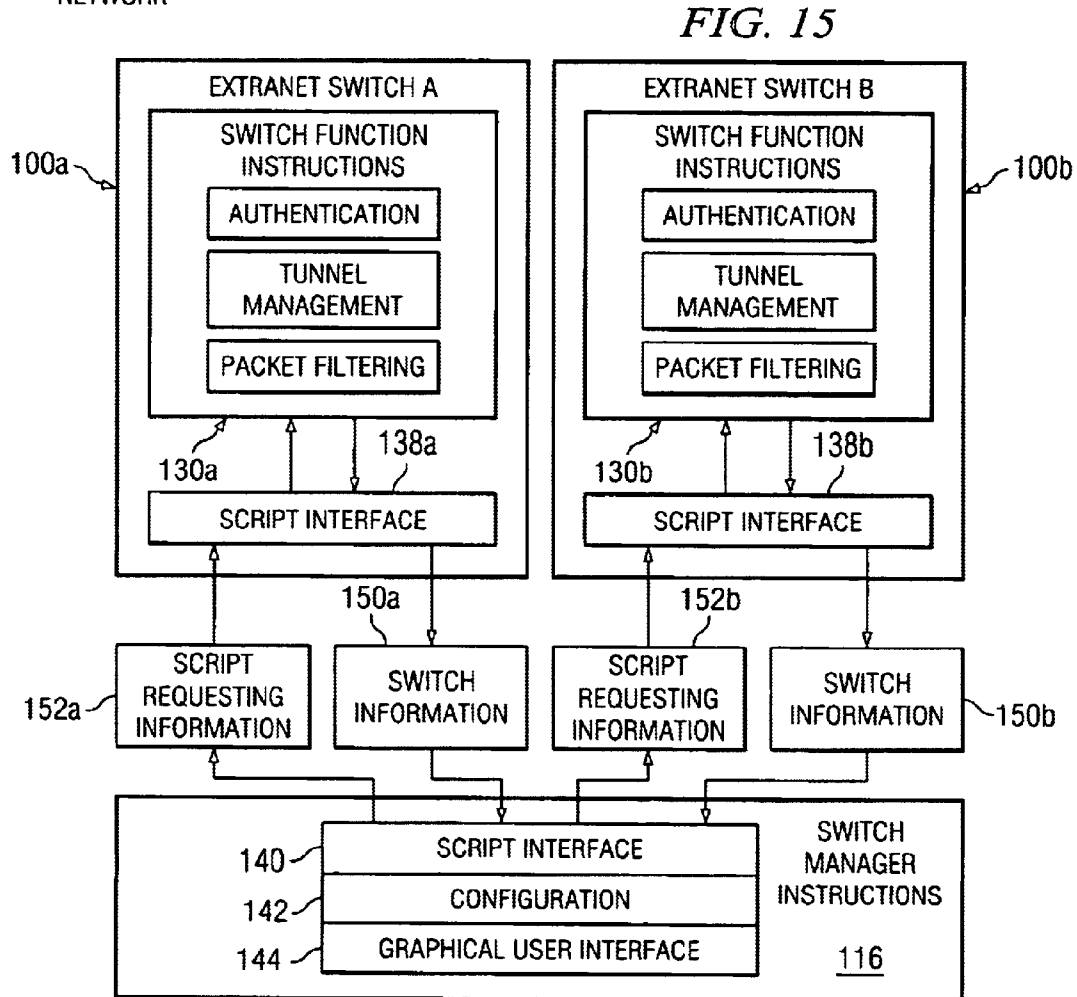


FIG. 15

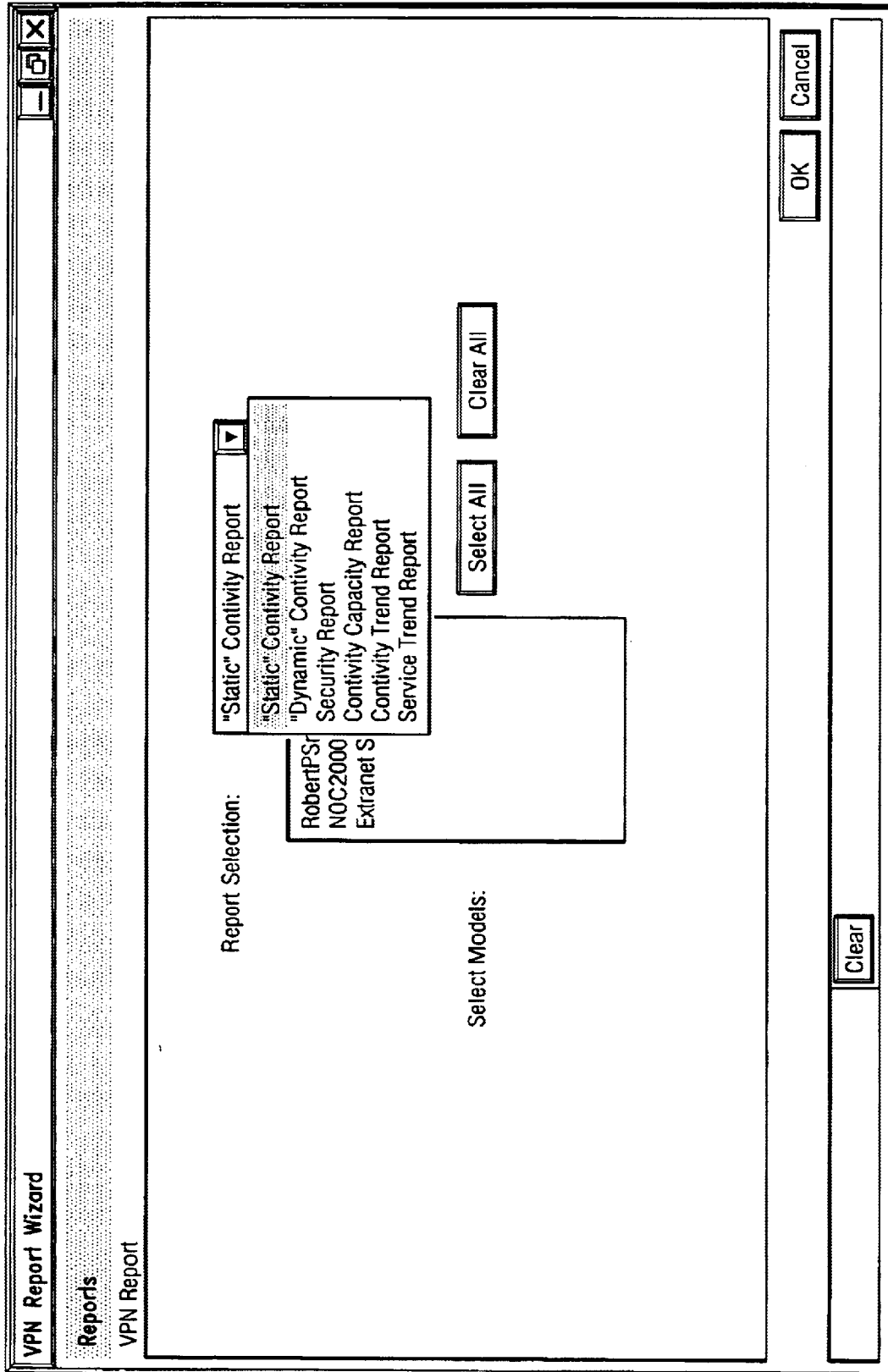


FIG. 16

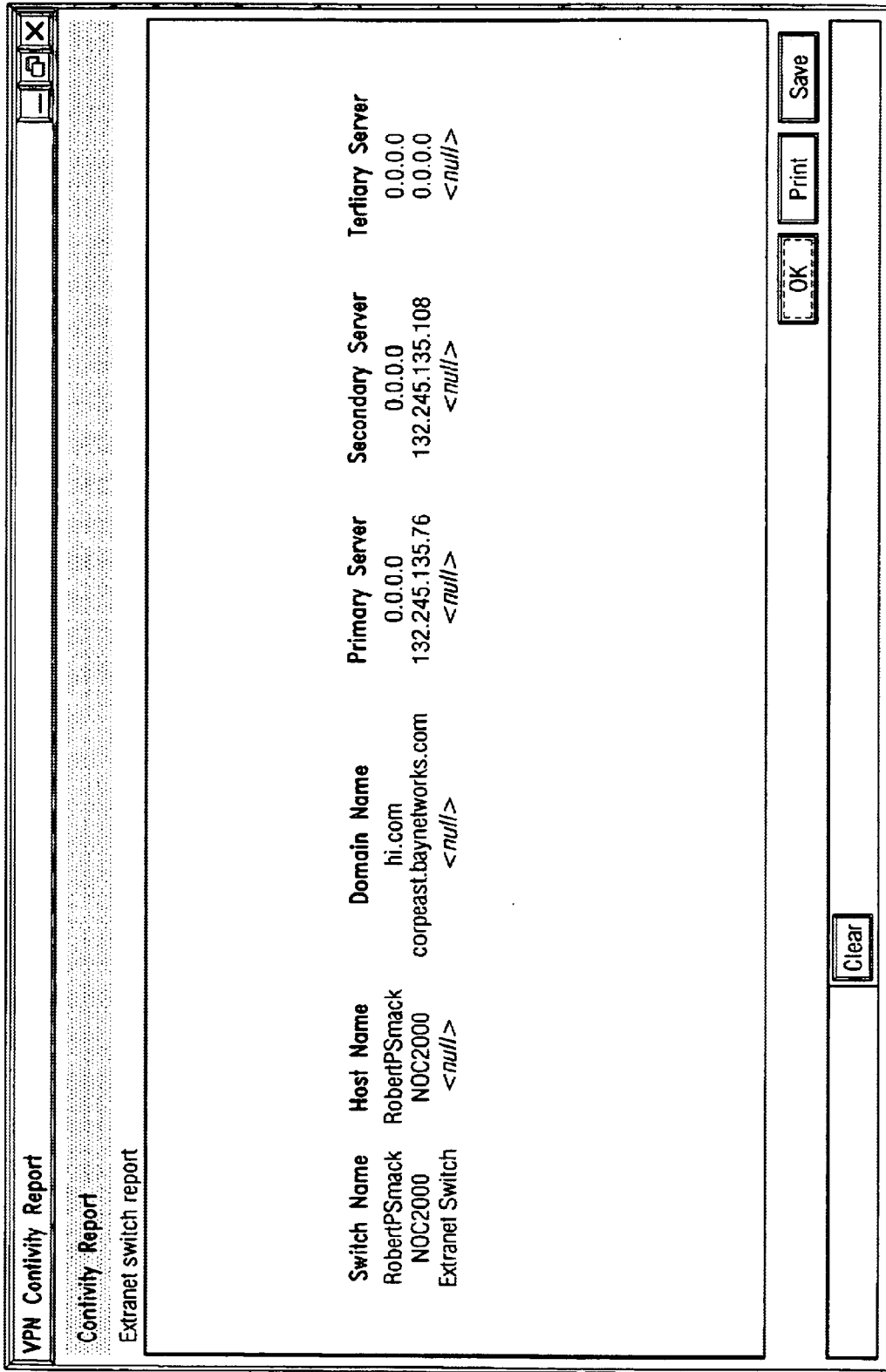


FIG. 17

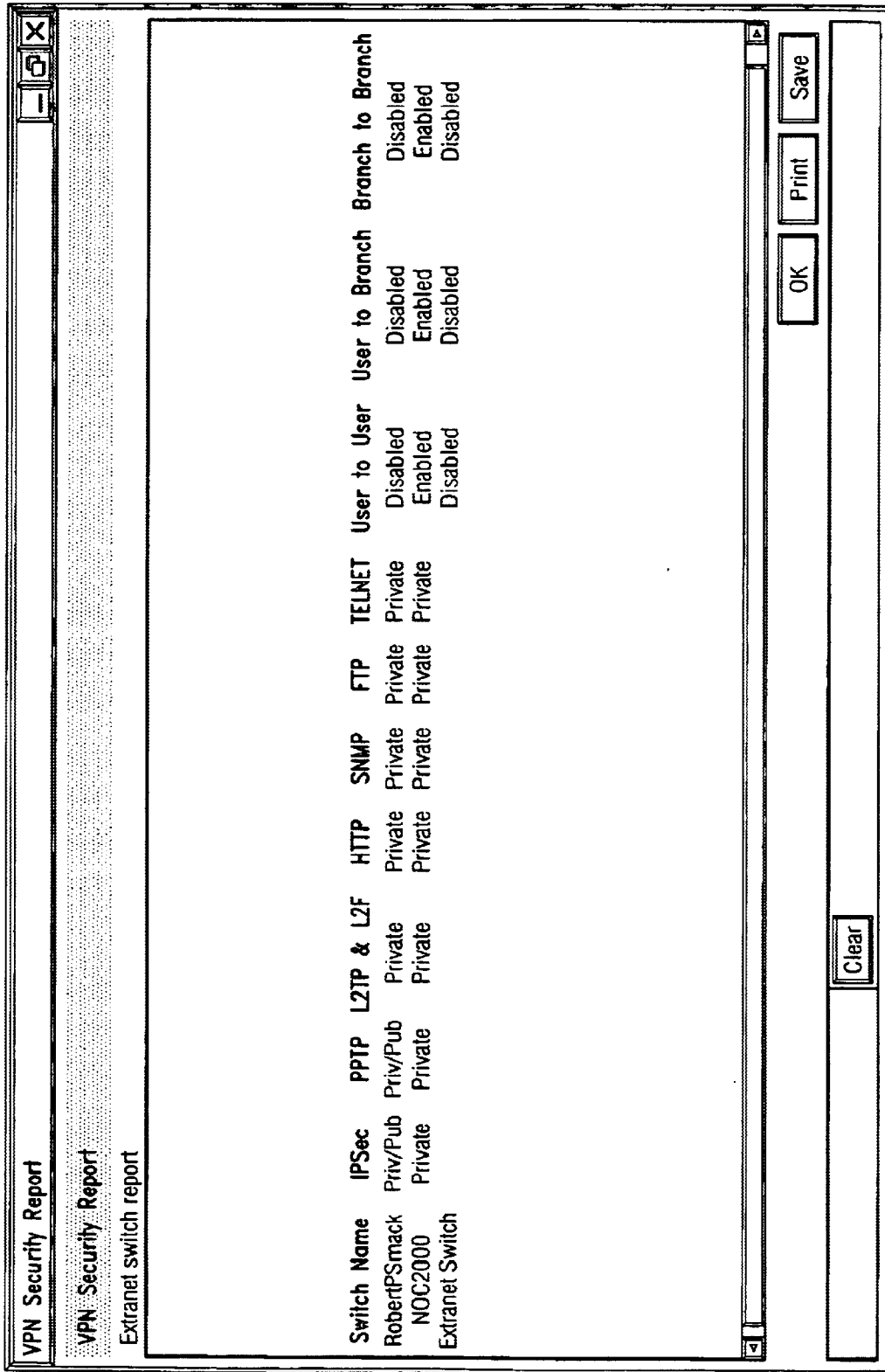


FIG. 18

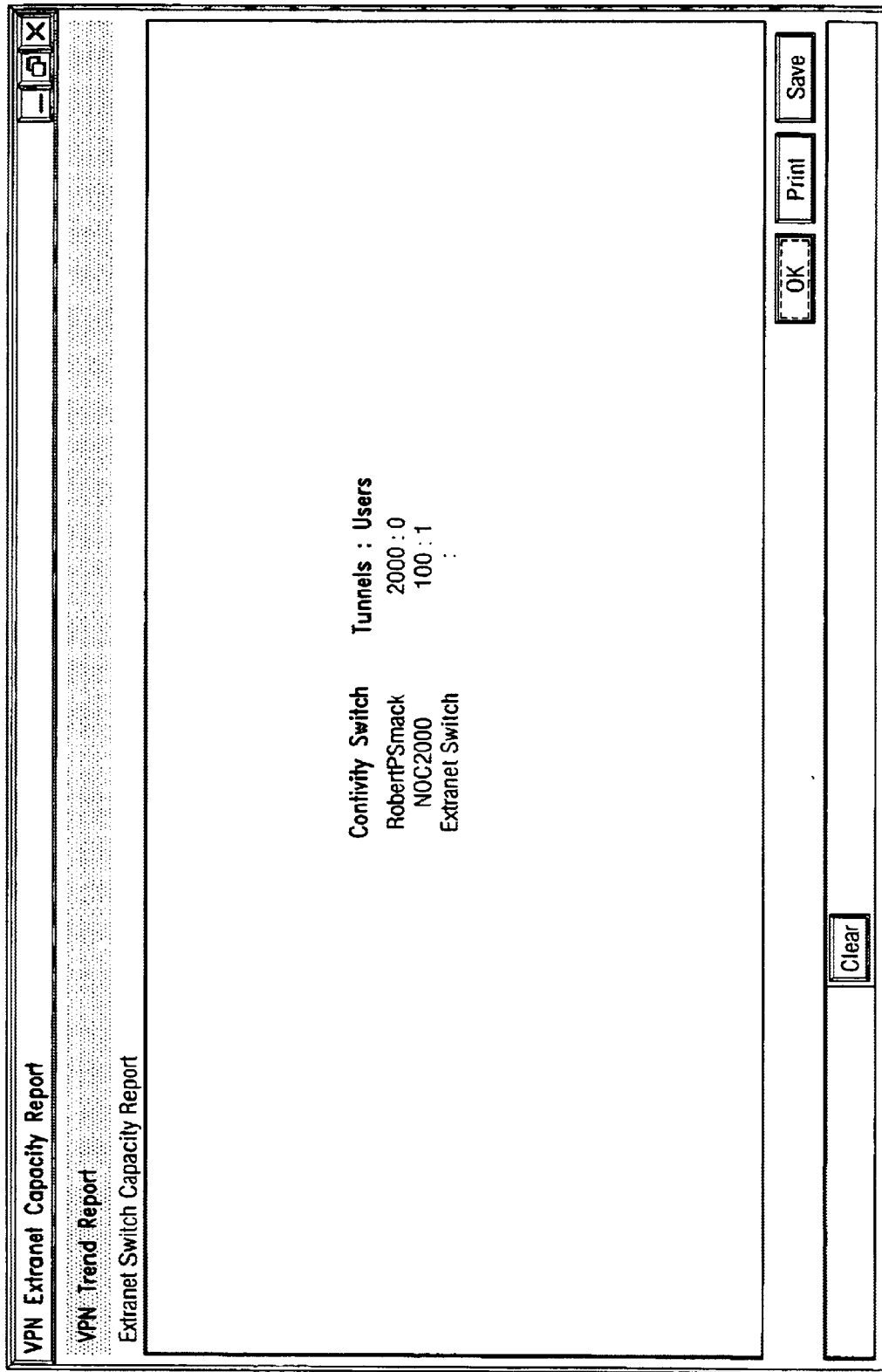


FIG. 19

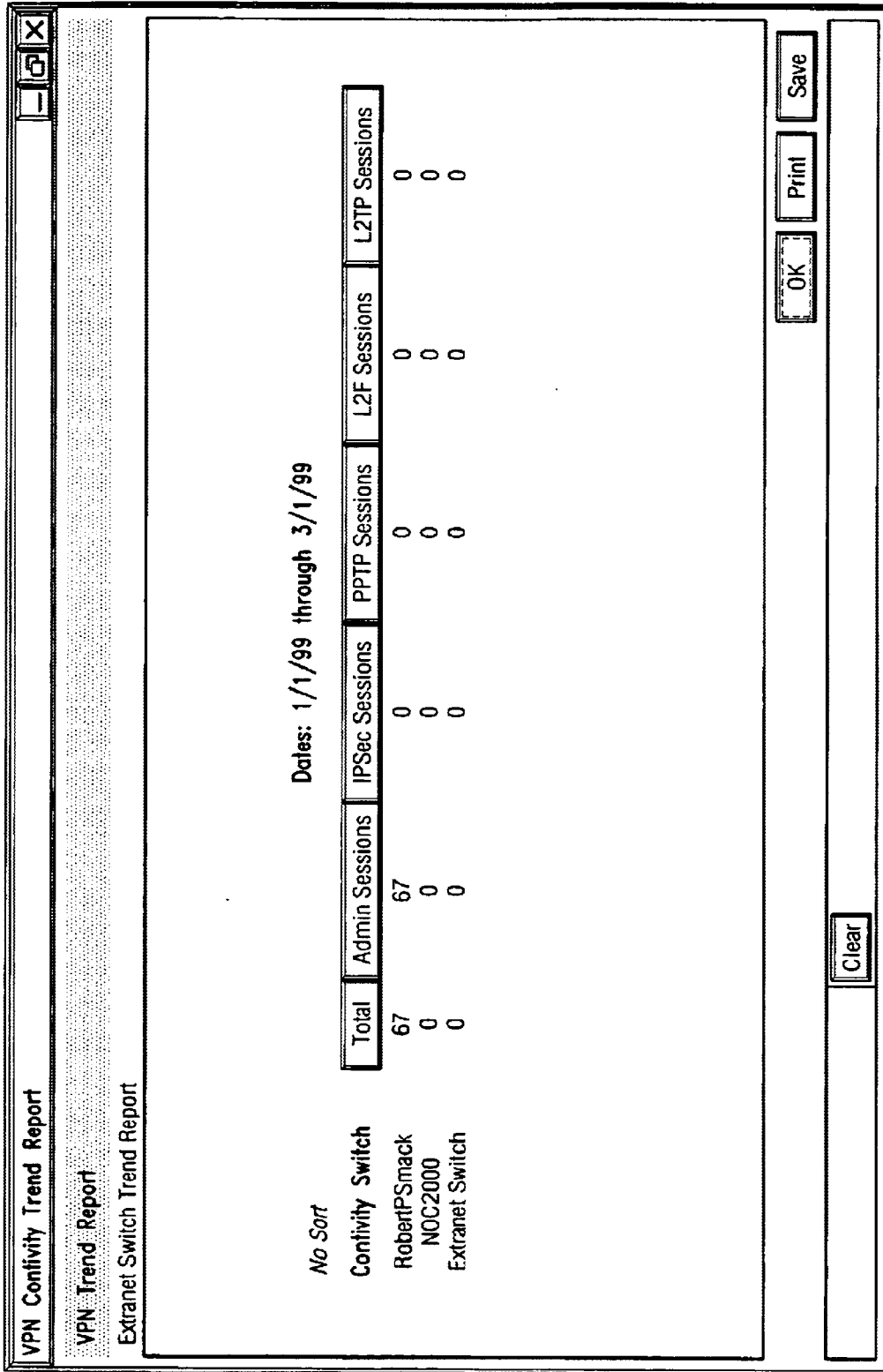


FIG. 20

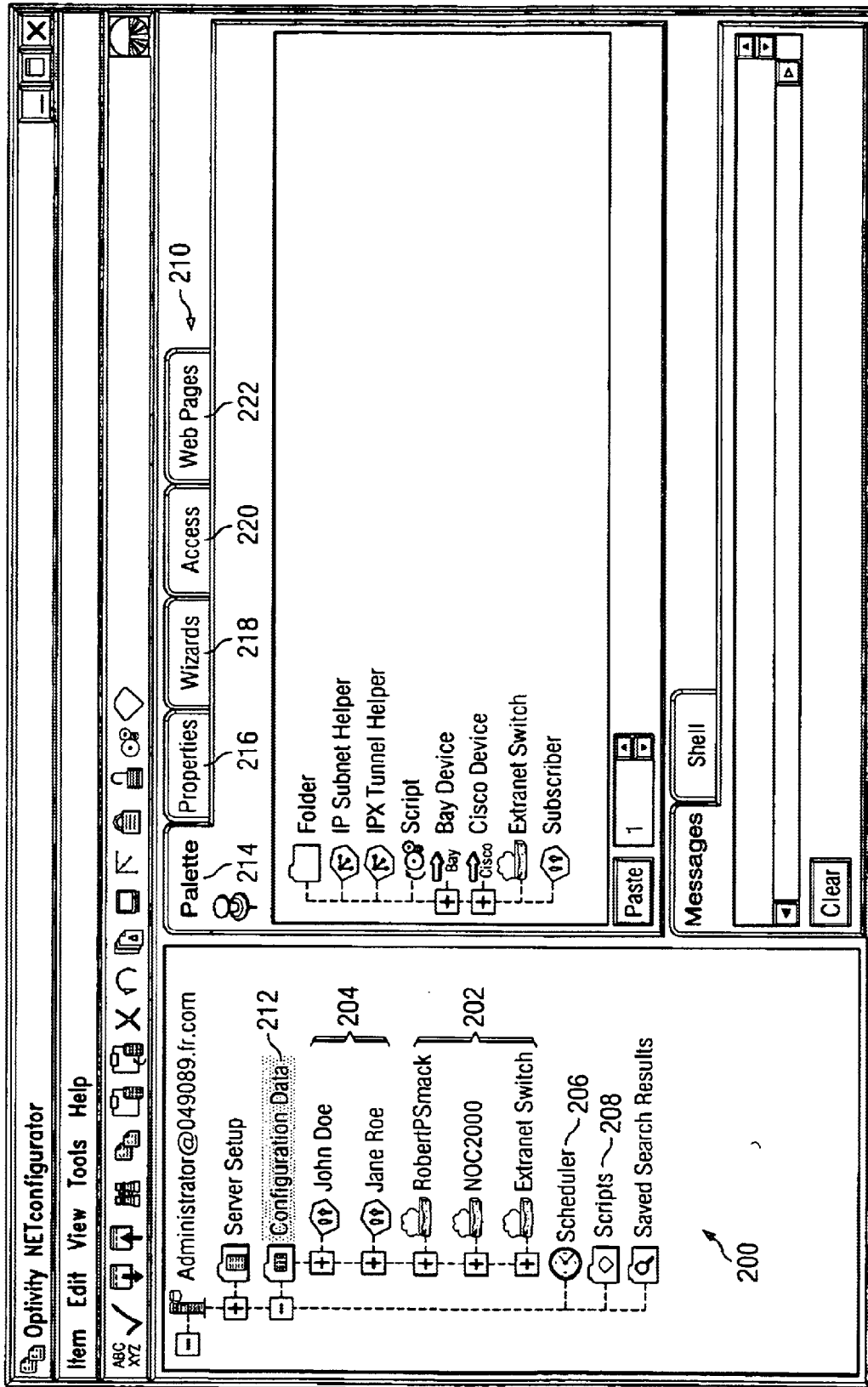


FIG. 21

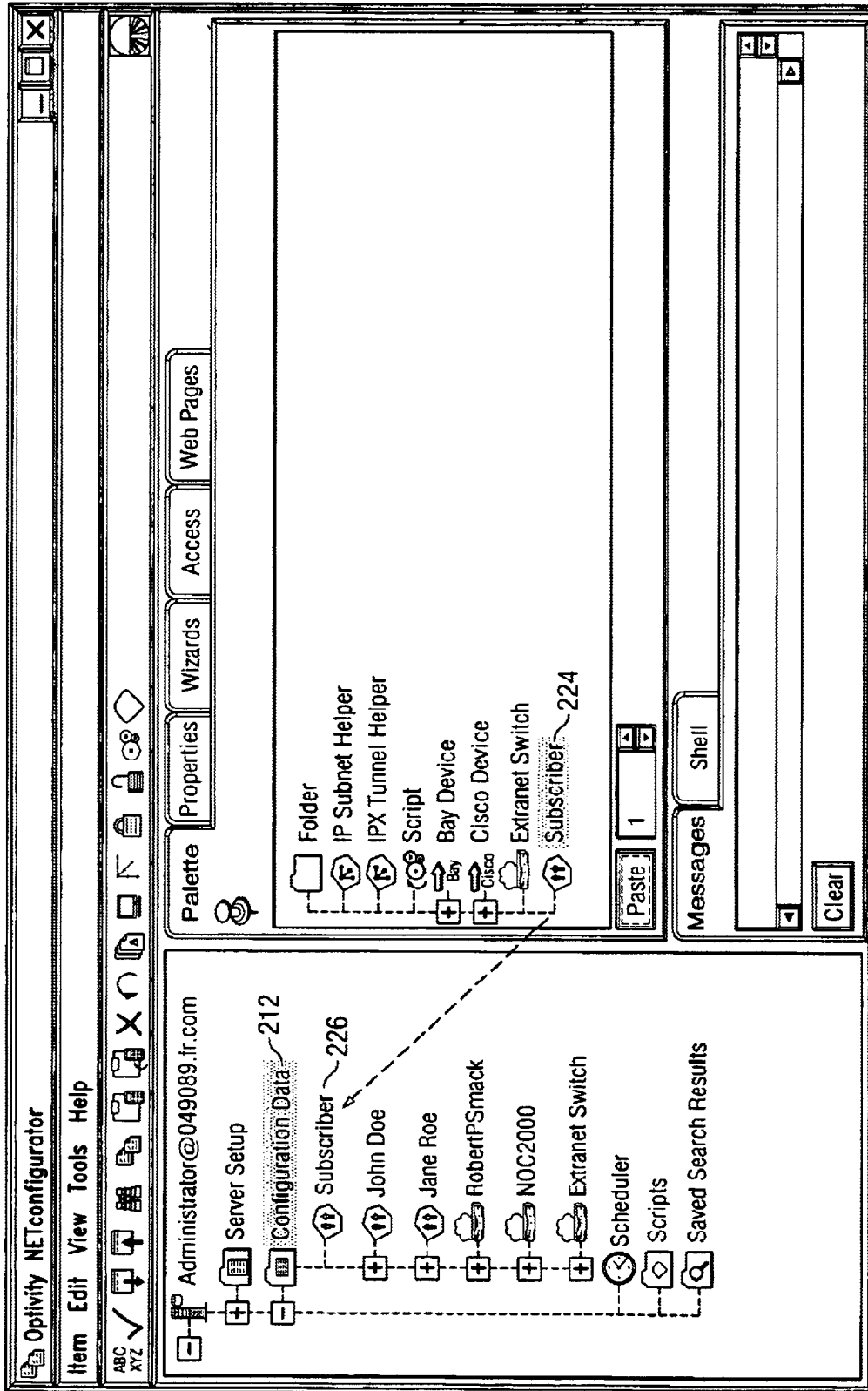


FIG. 22

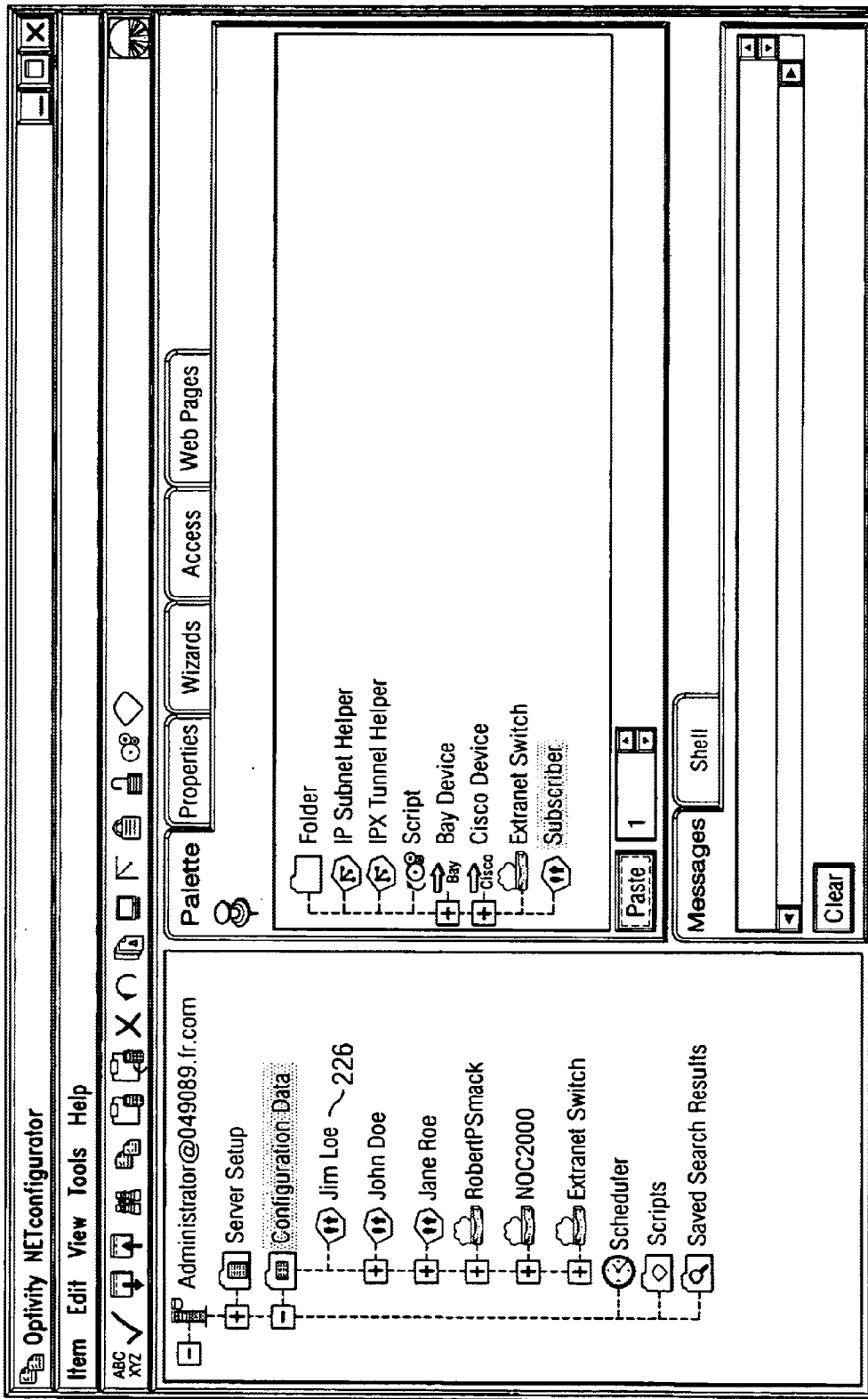


FIG. 23

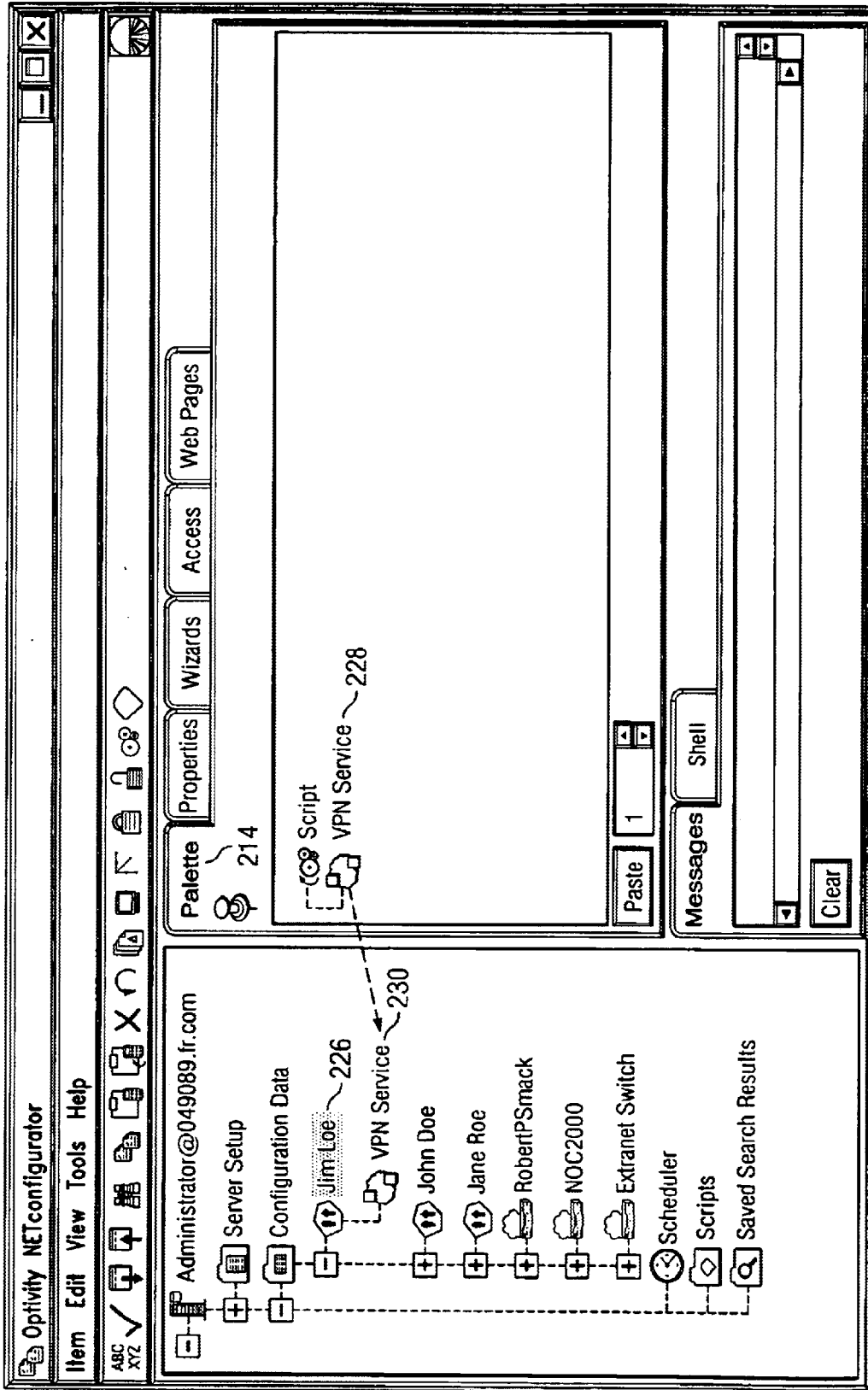


FIG. 24

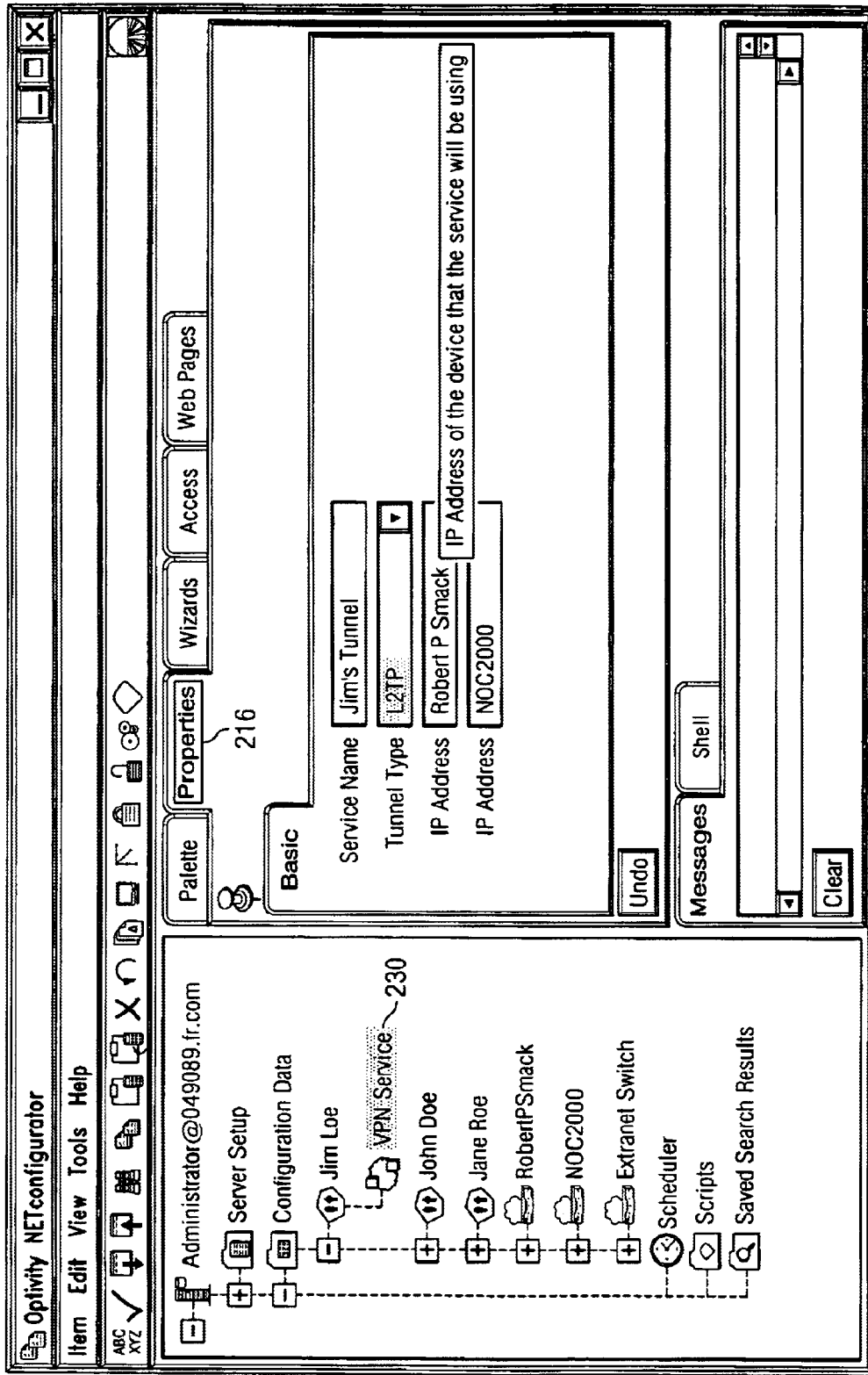


FIG. 25

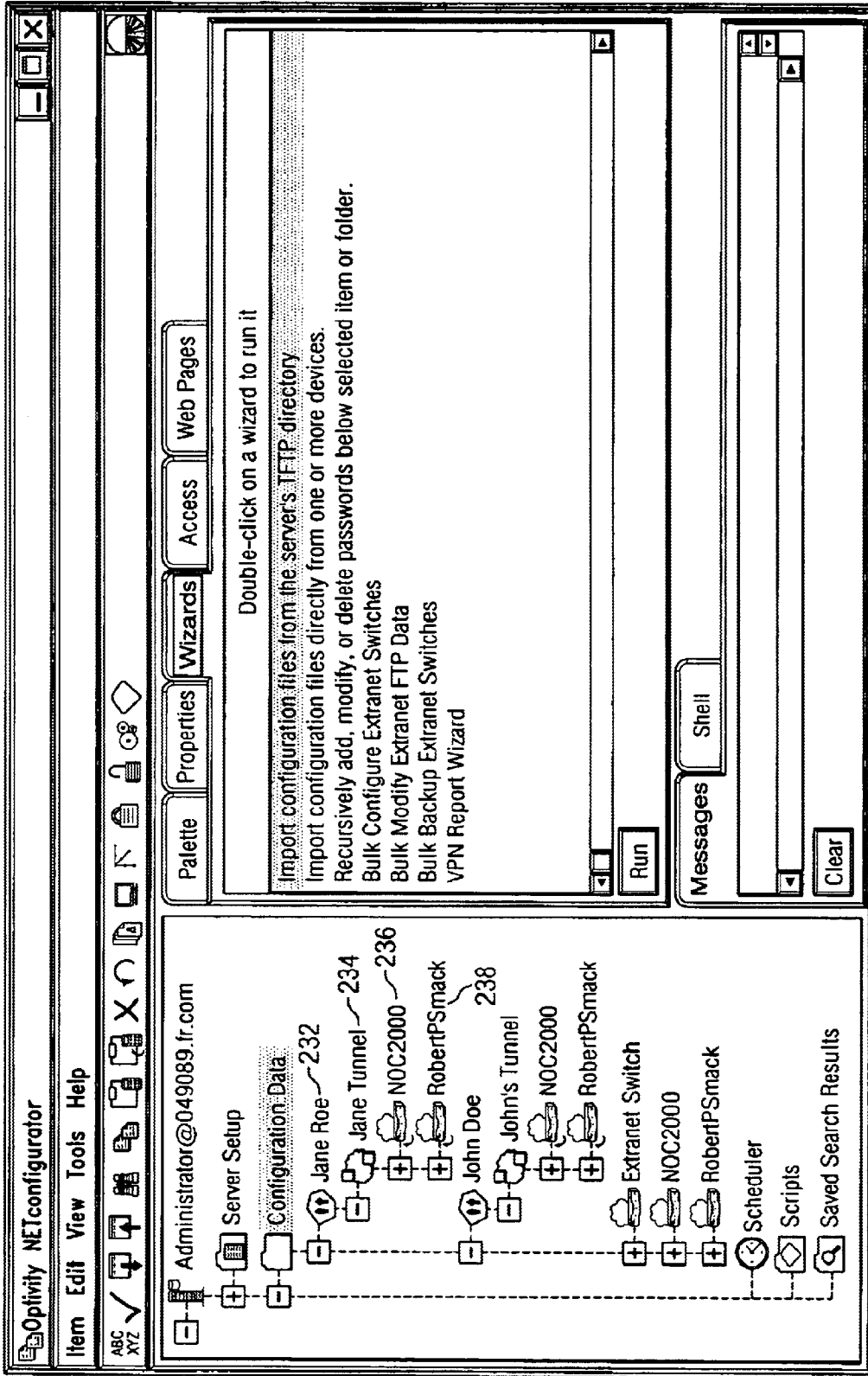


FIG. 26

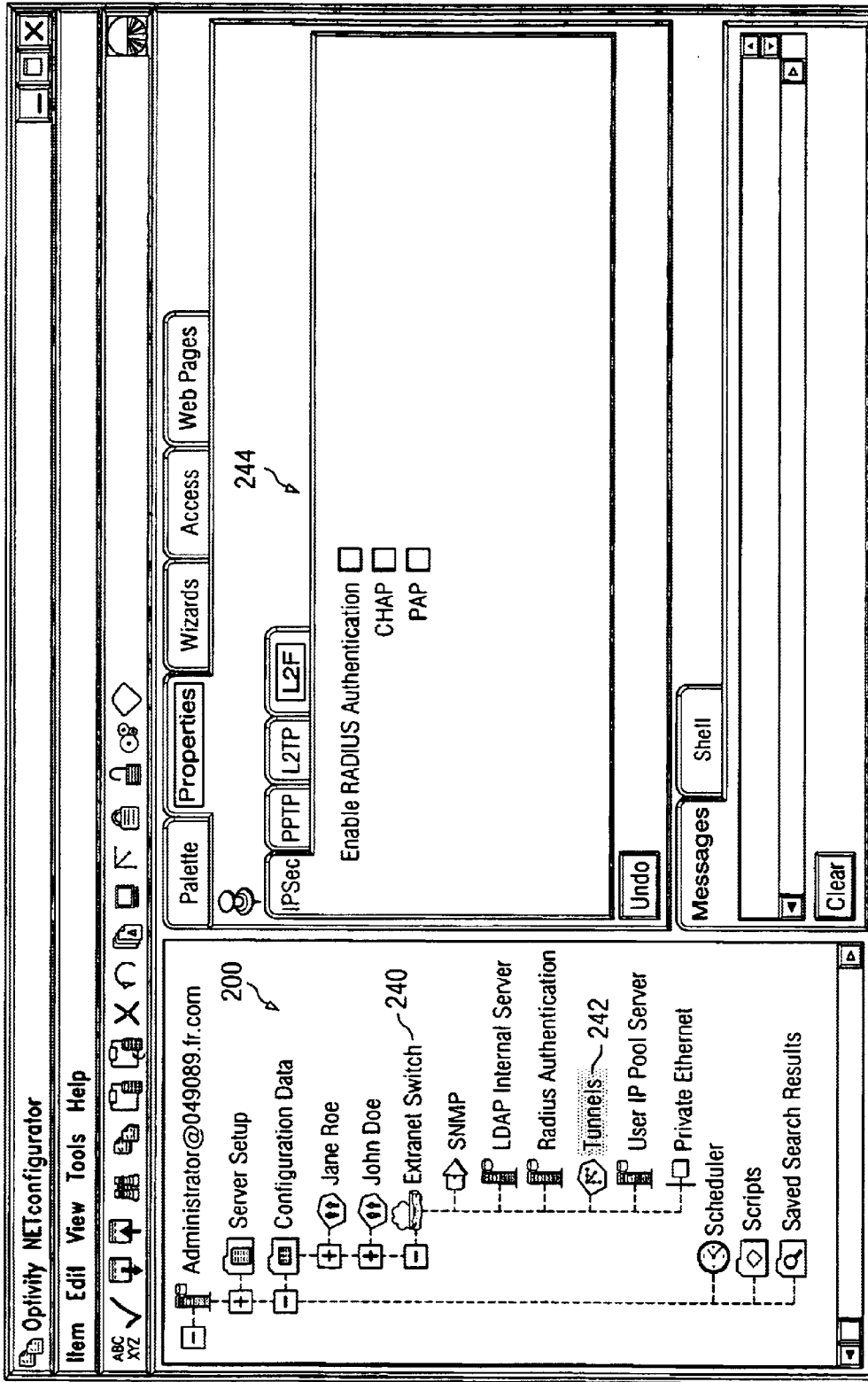


FIG. 27

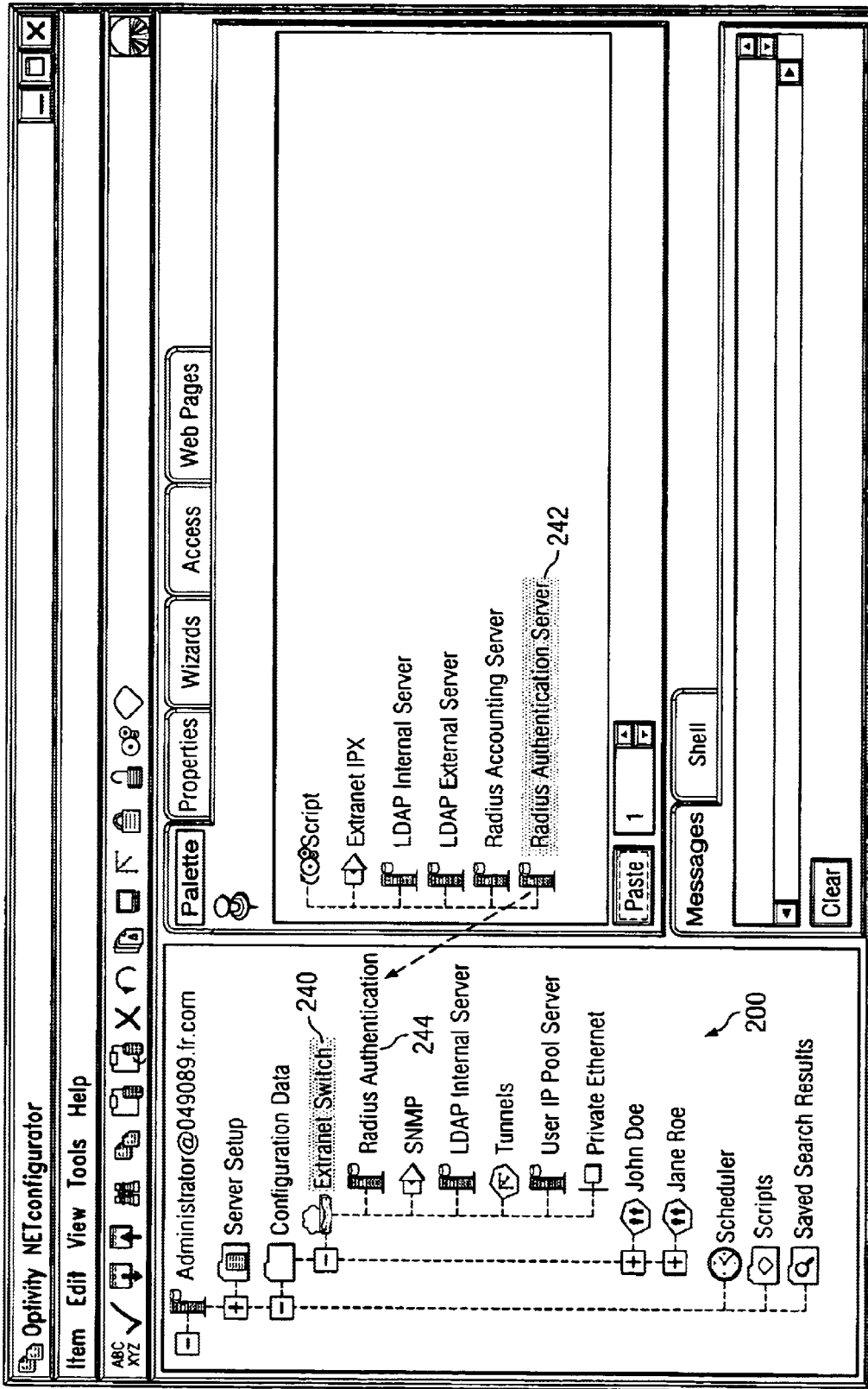


FIG. 28

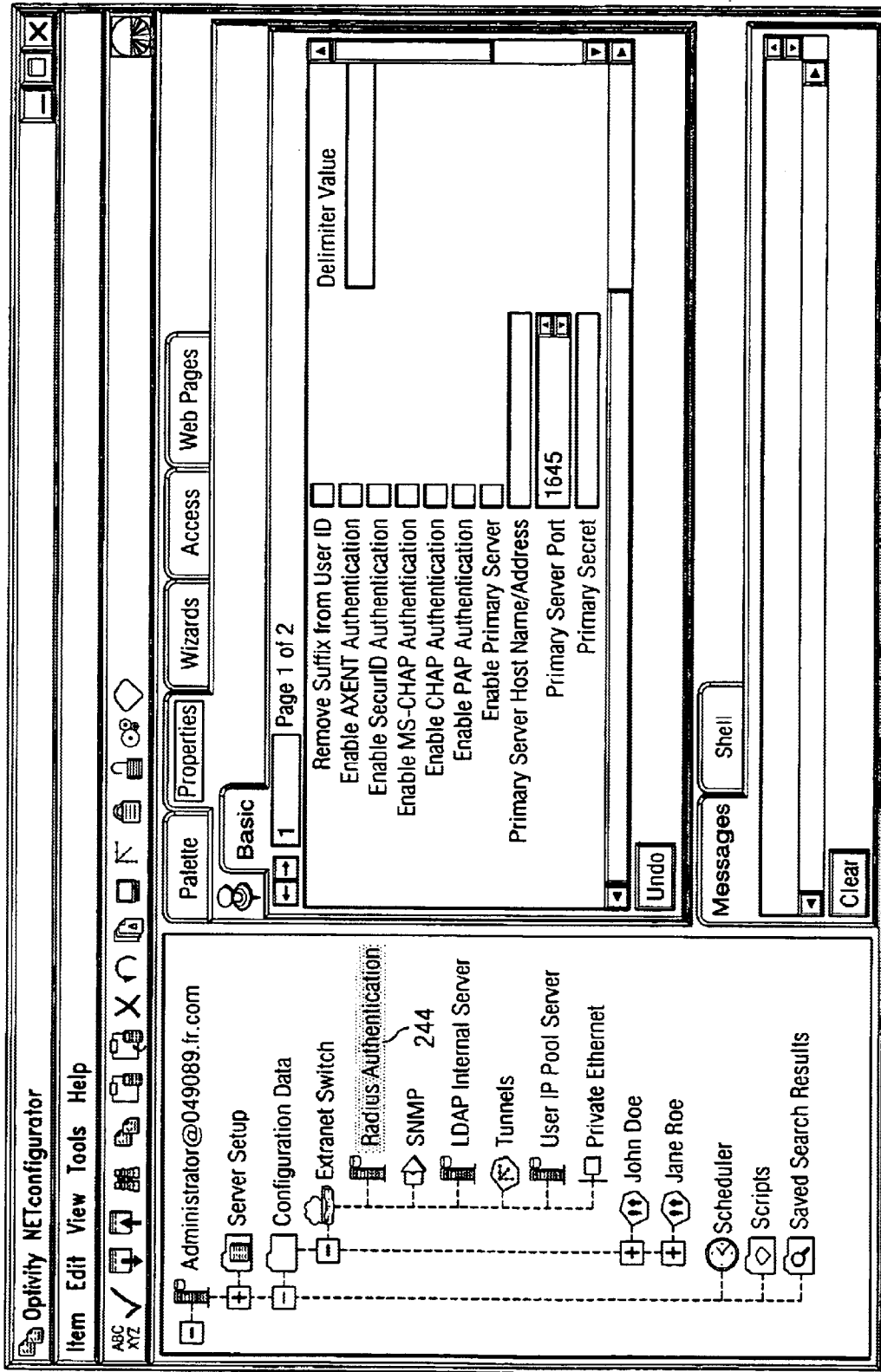


FIG. 29

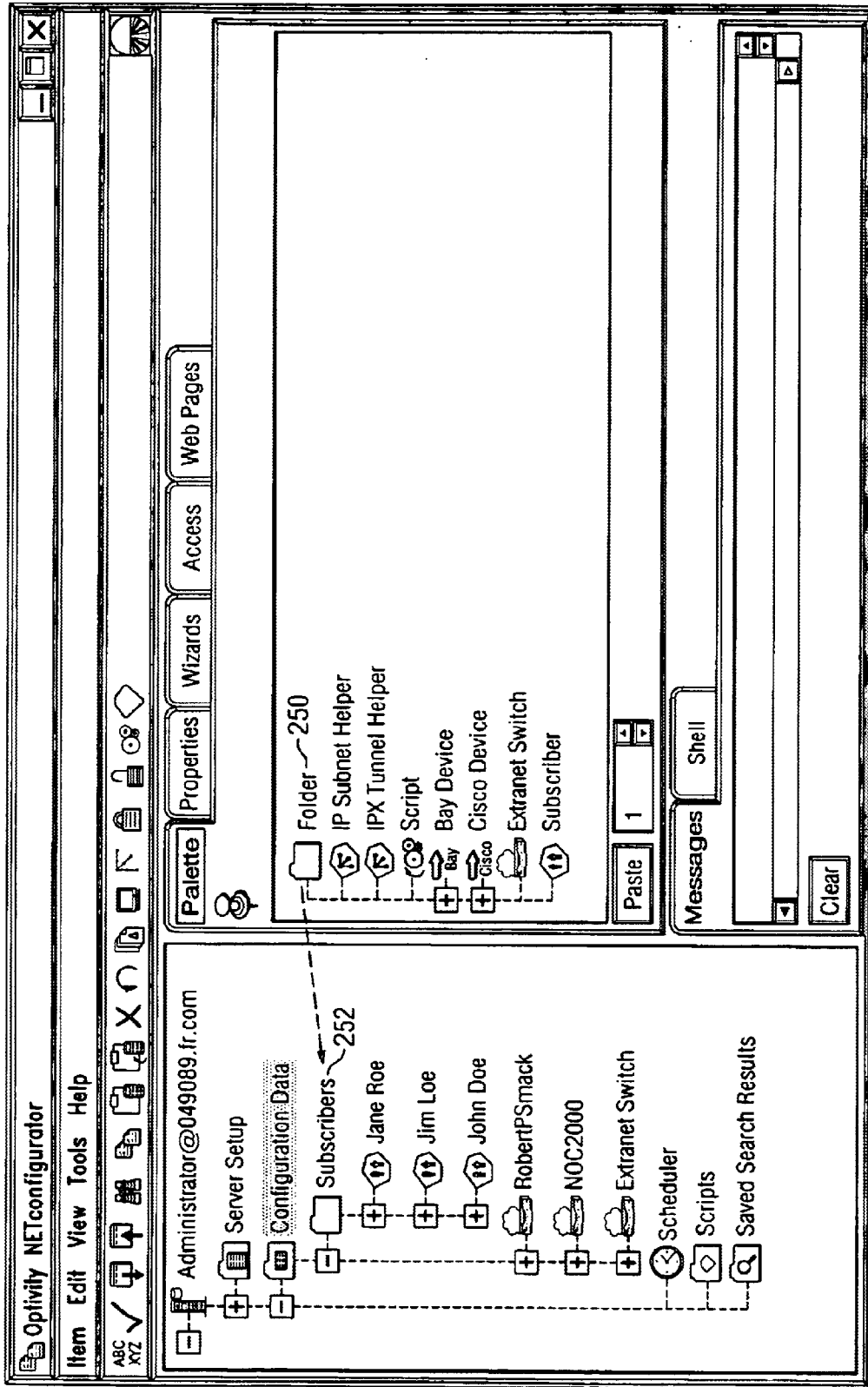


FIG. 30

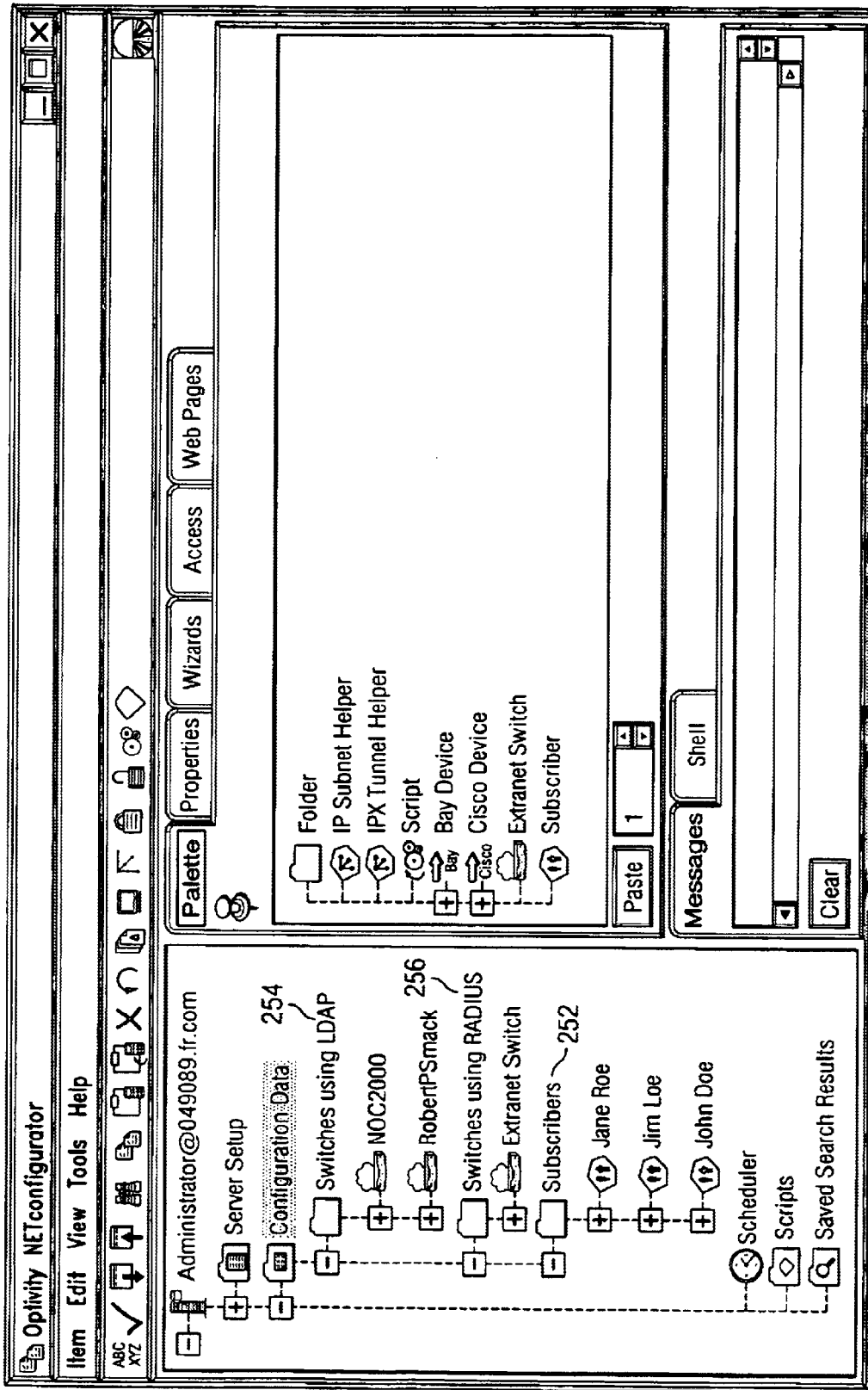


FIG. 31

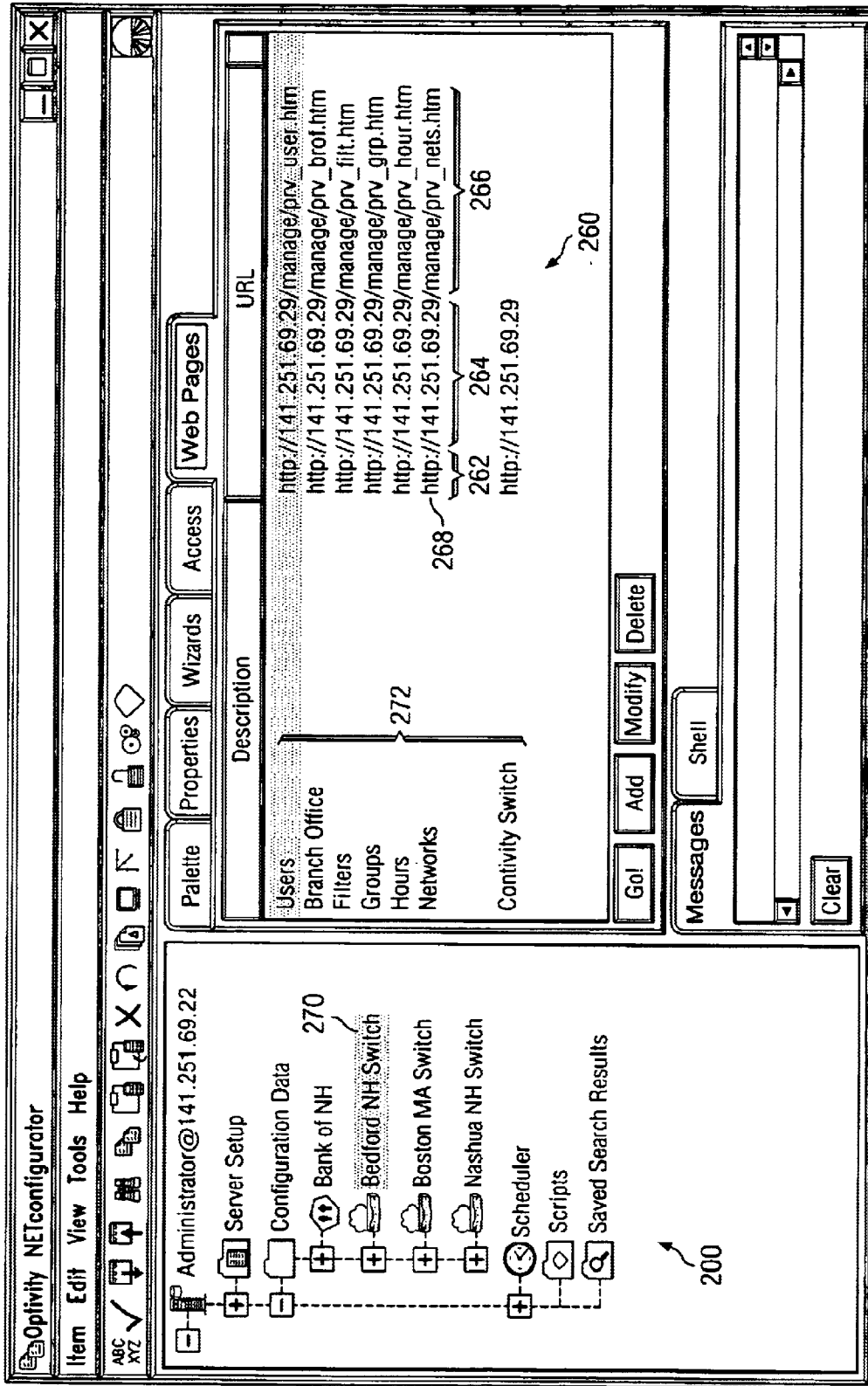


FIG. 32

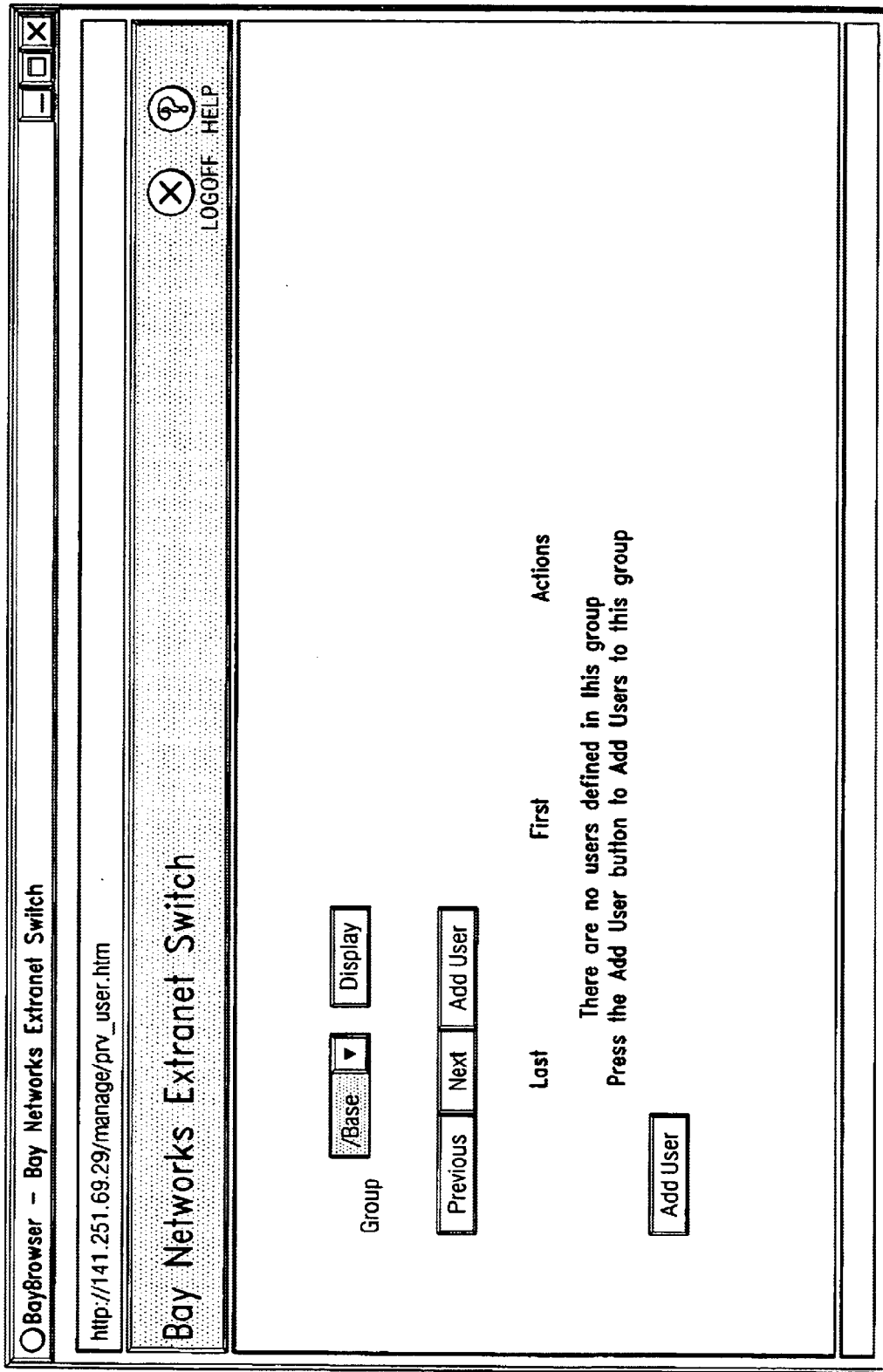


FIG. 33

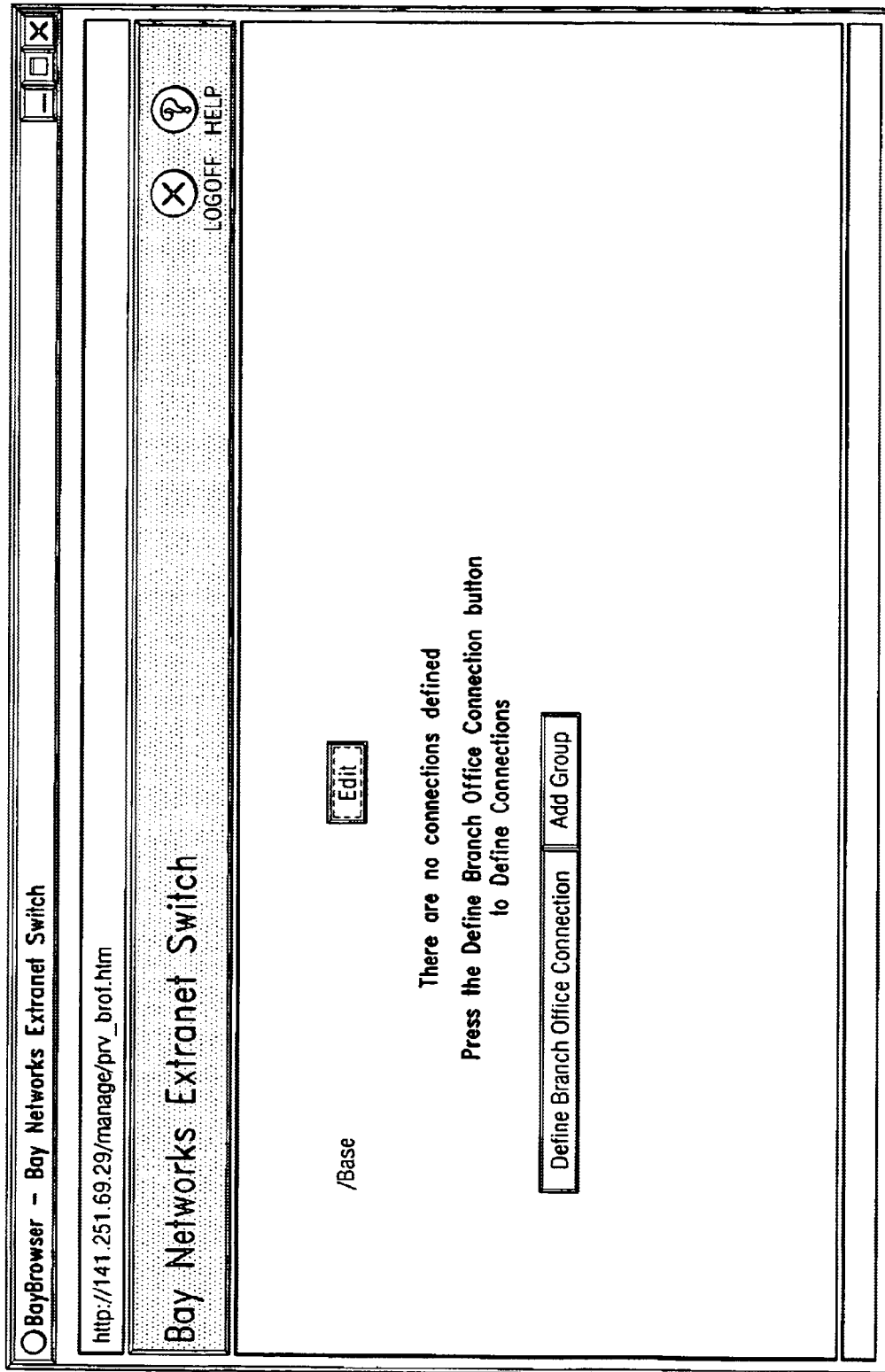


FIG. 34

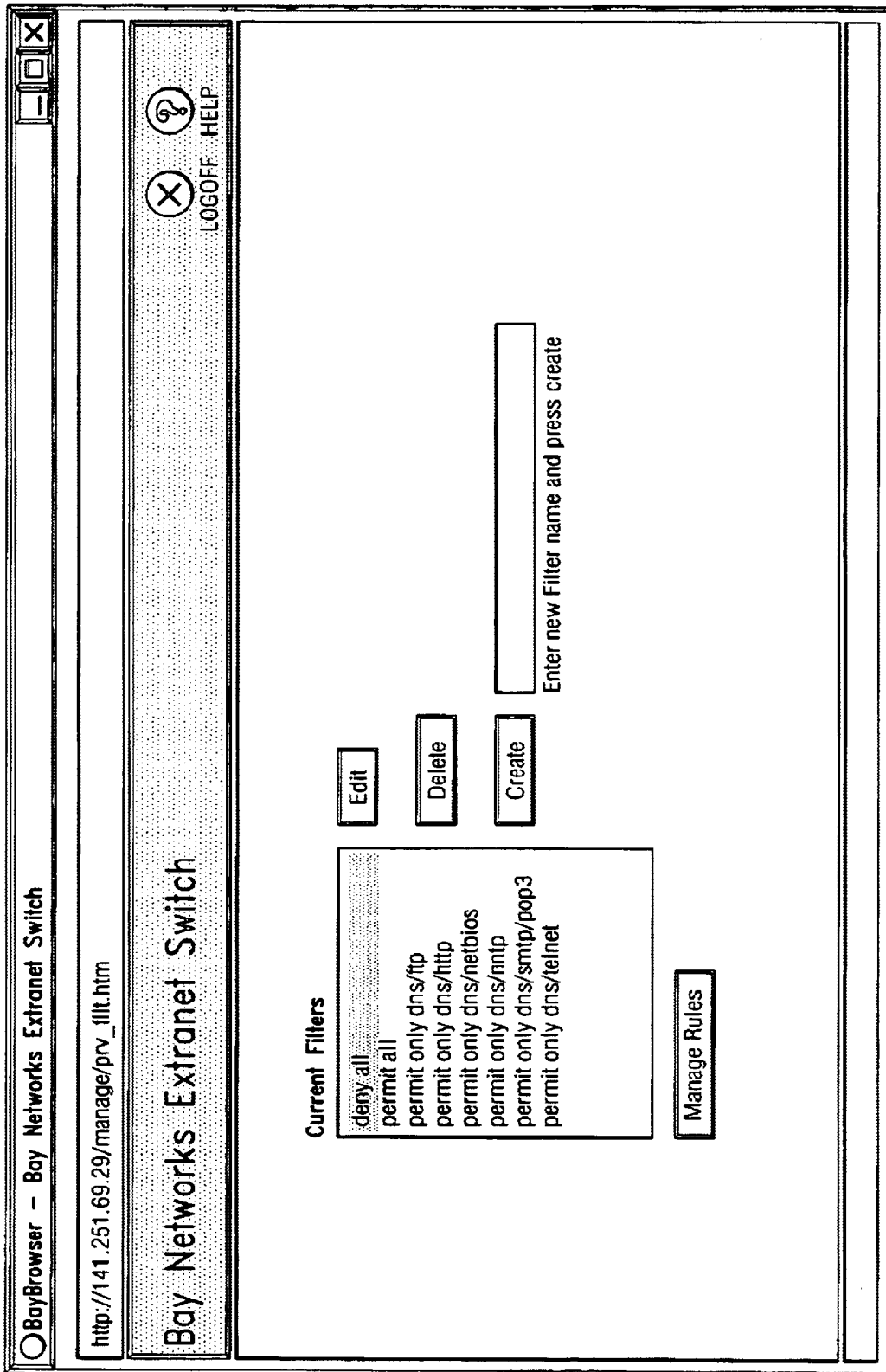


FIG. 35

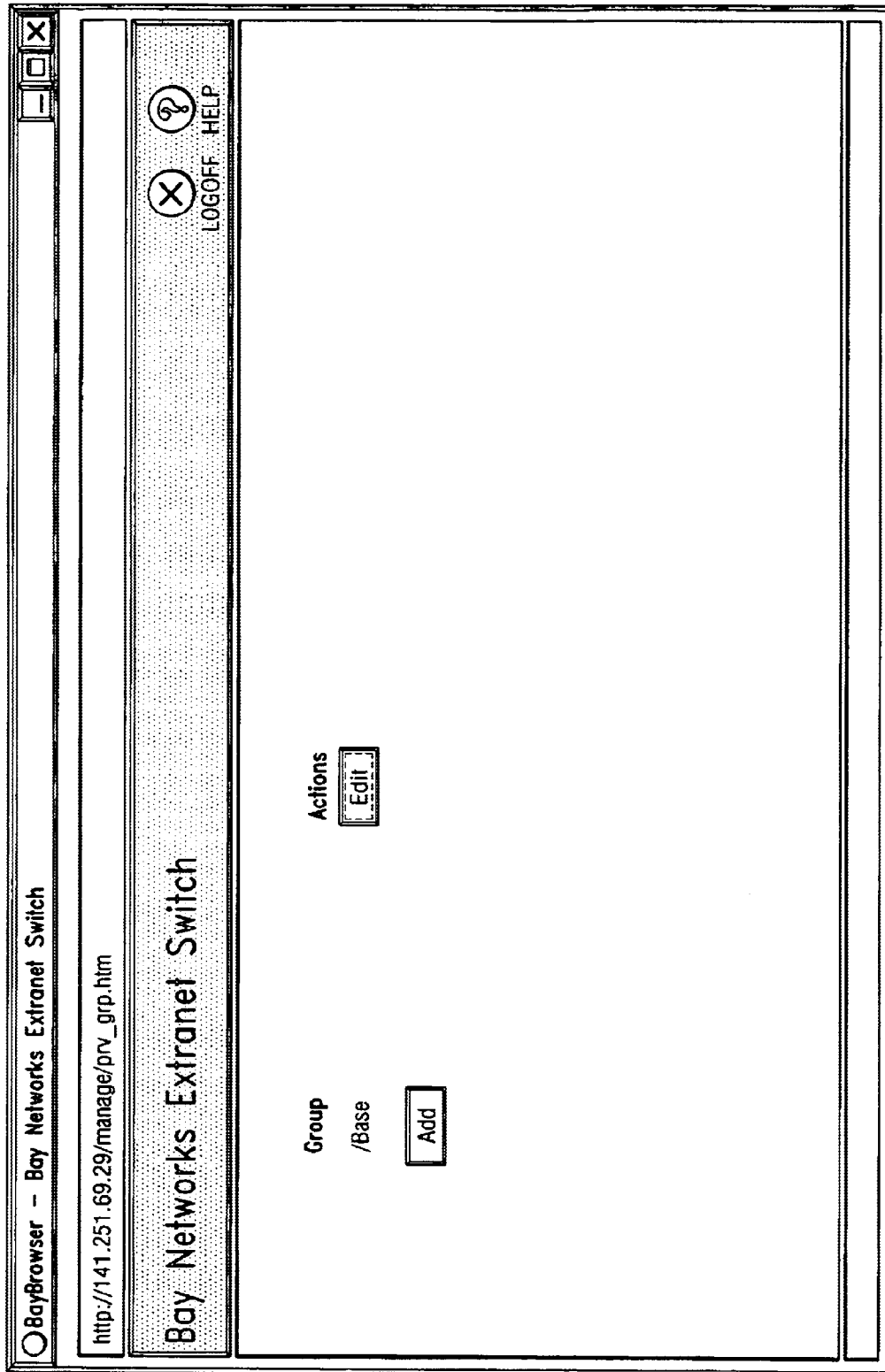


FIG. 36

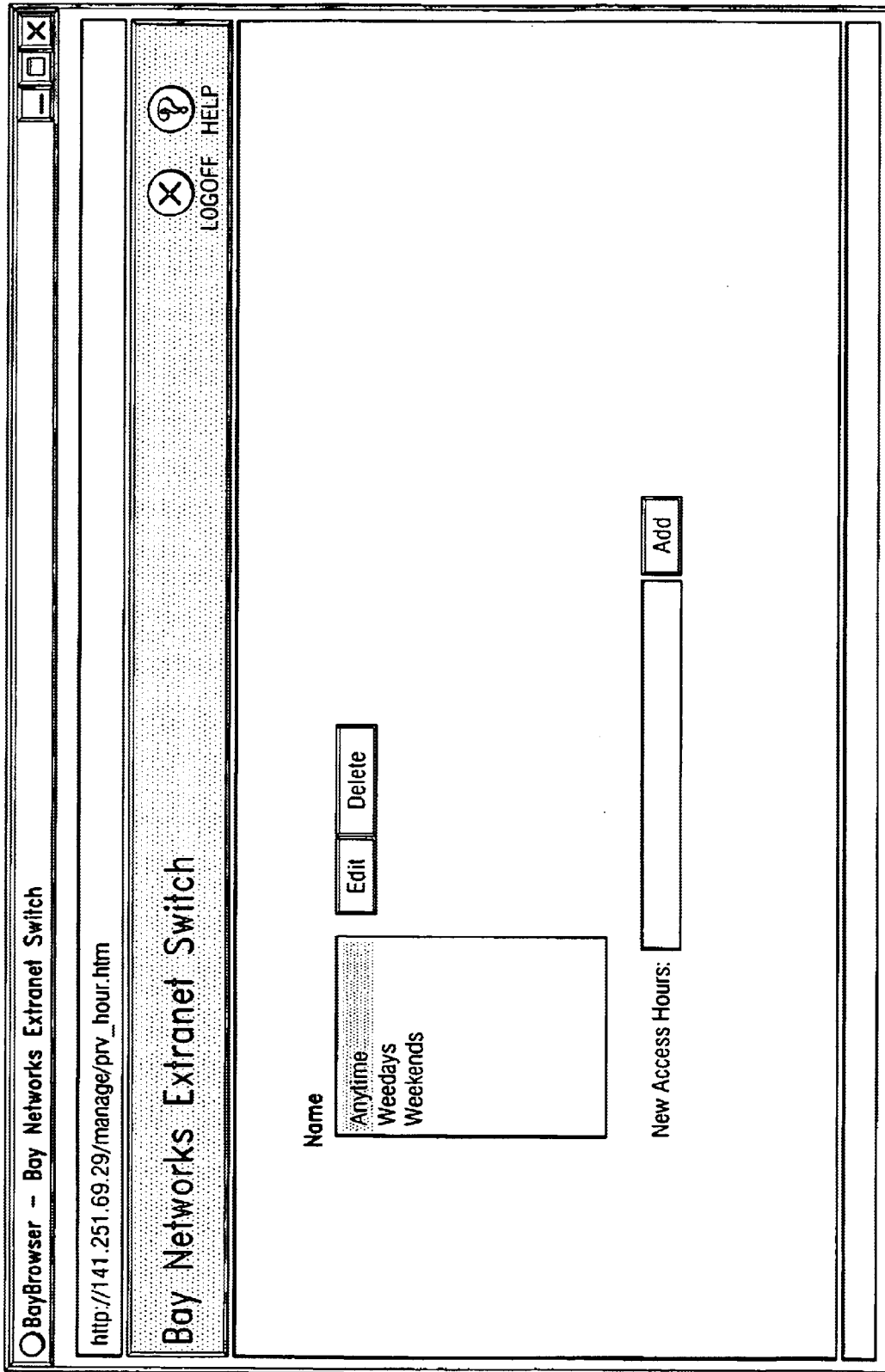


FIG. 37

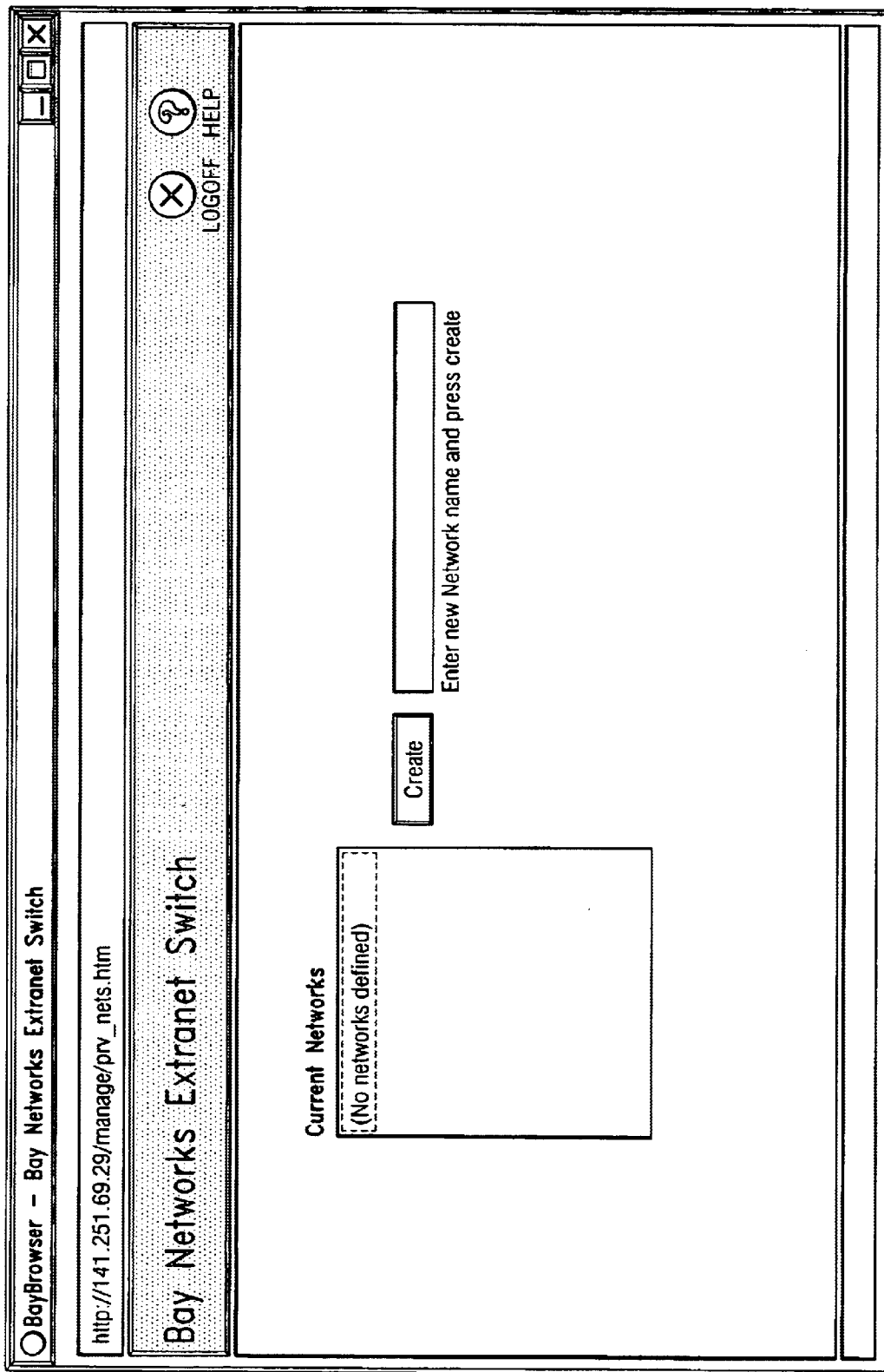


FIG. 38

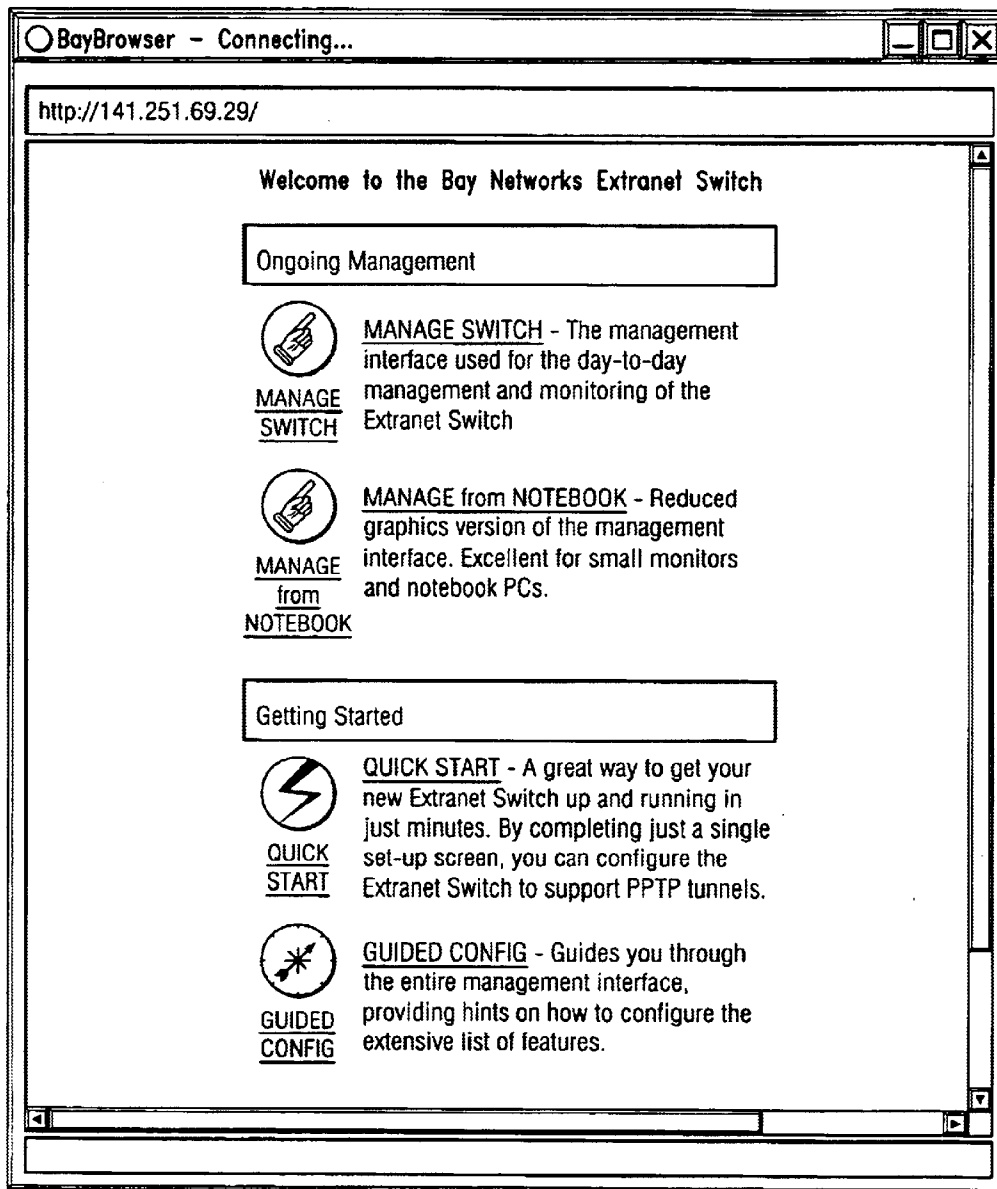


FIG. 39

MANAGING A VIRTUAL PRIVATE NETWORK

REFERENCE TO RELATED APPLICATIONS

This application relates to the following United States Patent Applications: U.S. Ser. No. 09/285,133, entitled "Bulk Configuring a Virtual Private Network", filed Apr. 2, 1999, U.S. Ser. No. 09/285,558, entitled "Links for Configuring a Virtual Private Network", filed Apr. 2, 1999; and U.S. Ser. No. 09/285,550, entitled "Monitoring a Virtual Private Network", filed Apr. 2, 1999.

BACKGROUND

This invention relates particularly to managing a virtual private network.

LANs (Local Area Networks), Intranets, and other private networks interconnect user computers, file servers, e-mail servers, databases, and other resources. Typically, organizations want to offer remote access to private network resources to traveling employees, employees working at home, and branch offices without compromising the security of the private network.

Virtual private networks (a.k.a. Extranets) securely stitch together remote private networks and remote computers using a public network such as the Internet as a communication medium. Each private network can connect to the public network via an extranet switch such as the Contivity™ Extranet switch offered by Nortel™ Networks. Extranet switches provide a variety of virtual private network functions such as network packet tunneling and authentication.

For configuring the functions provided by the switch, Contivity™ switches offer a web-server and web-pages programmed to configure the different virtual private network functions in response to administrator interaction with the web-pages. By using a browser to navigate to each virtual private network switch, one after another, the administrator can configure the tunneling, authentication, packet filtering, and other functions provided by the switch. Management functions provided by the Contivity™ switches are described in greater detail in the New Oak™ Communications Extranet Access Switch Administrator's Guide.

SUMMARY OF THE INVENTION

In general, in one aspect, the invention features a method of managing a virtual private network includes providing a graphical user interface for displaying one or more virtual private network subscribers and one or more computers offering virtual private network functions. The graphical user interface is programmed to display tunnels associated with either the subscribers and/or the computers offering virtual private network functions based on user input.

Embodiments may include one or more of the following features. The computers offering virtual private network functions comprise extranet switches. The virtual private network functions can include tunneling and/or authentication. Displaying subscribers and computers may include displaying a hierarchical tree that includes the subscribers and the computers.

In general, in another aspect, the invention features a graphical user interface for use in managing a virtual private network. The graphical user interface includes a display of virtual private network elements, the different elements being selectable by a user, a collection of palettes that provide virtual private network sub-elements associated

with the virtual private network elements, and a collection of properties dialogs that collect information associated with virtual private network elements and/or sub-elements. The palette and/or properties dialog displayed being controlled by user selection of an element.

Embodiments may include one or more of the following features. The display of virtual private network elements can be a hierarchical tree. The hierarchical tree can display virtual private network sub-elements associated with displayed virtual private network elements. The virtual private network elements comprise subscribers and/or computers (e.g., extranet switches) offering virtual private network functions. The sub-elements can include SNMP properties and/or authentication techniques. The graphical user interface may permit an administrator to modify a virtual private network element listed in the hierarchical tree by dragging and dropping a virtual private network sub-element from a displayed palette.

In general, in another aspect, the invention features a graphical user interface for use in managing a virtual private network. The graphical user interface includes a hierarchical tree that includes different extranet switches, the different extranet switches being selectable by a user, a collection of palettes that provide groupings of extranet switch attributes, and a collection of properties dialogs that collect information associated with the extranet switch attributes, the properties dialog and/or the palette being displayed can be controlled by user selection of an element.

Advantages may include one or more of the following. The graphical user interface enables an administrator to quickly view and/or modify attributes of the extranet switches in a virtual private network. The palette and properties dialogs provide administrators with an intuitive method for configuring different functions provided by the extranet switches. The graphical user interface also enables an administrator to view virtual private network information from different perspectives. For example, from a perspective of services provided to different subscribers or from a perspective of services provided by particular extranet switches.

Other advantages of the invention will become apparent in view of the following description, including the figures, and the claims.

BRIEF DESCRIPTION OF THE DRAWINGS

FIG. 1 is a diagram illustrating bulk configuration of multiple extranet switches.

FIG. 2 is a diagram of tunnels provided by configured extranet switches.

FIG. 3 is a flow-chart of a process for bulk configuring multiple extranet switches.

FIG. 4 is a diagram of a switch manager exporting configuration information to multiple extranet switches.

FIGS. 5-13 are screenshots of a wizard that guides an administrator through a bulk configuration process

FIG. 14 is a diagram illustrating importing information from multiple extranet switches.

FIG. 15 is a diagram of a switch manager importing information from an extranet switch.

FIGS. 16-20 are screenshots of extranet switch reports.

FIGS. 21-31 are screenshots of a graphical user interface that enables an administrator to manage extranet switches in a virtual private network.

FIG. 32 is a screenshot of a menu of links to web-pages offered by an extranet switch.

FIGS. 33–39 are screenshots of web-pages offered by an extranet switch.

DESCRIPTION OF THE PREFERRED EMBODIMENTS

Introduction

An extranet switch manager provides administrators with a tool that centralizes management of different extranet switches in a virtual private network. The manager can bulk configure multiple extranet switches, prepare reports describing the extranet switches, provide convenient access to individual switch configuration mechanisms, and provide an intuitive representation of virtual private network elements. The manager offers these capabilities to an administrator via an easy to use graphical user interface (GUI). After an administrator enters IP (Internet Protocol) addresses of extranet switches in a virtual private network, the switch manager can quickly import and export data to both view the current configuration and activity of the switches and quickly alter the configuration of one or more switches.

Bulk Configuration of Multiple Extranet Switches

As shown in FIG. 1, a virtual private network 102 can include private networks 106, 110 and/or remote computers 114 that communicate over a public network 104. Each private network 106, 110 can connect to the public network 104 via an extranet switch 100a, 100b such as a Contivity™ Extranet Switch offered by Nortel Networks. As shown, each extranet switch 100a, 100b has a private interface that communicates with a private network 106, 110 and a public interface that communicates with the public network 104. Extranet switches 100a, 100b handle virtual private network functions such as network packet tunneling and authentication. The extranet switches 100a, 100b can also enforce packet filtering rules, enforce hours of access, and perform other functions that maintain a secure virtual private network. Many of these functions may be included in a firewall or router. Hence, we use the term “extranet switch” to generically refer to a system providing these functions. As shown in FIG. 1, switch manager instructions 116 reside on a remote computer, however, the instructions 116 could reside on any computer able to communicate with the extranet switches 100a, 100b.

Each switch 100a, 100b can provide different tunneling protocols (e.g., PPTP (Point-to-Point Tunneling Protocol), L2F (Layer 2 Forwarding), L2TP (Layer 2 Tunnel Protocol), and IPsec (IP Secure)), different encryption schemes, different authentication mechanisms (e.g., internal or external LDAP (Lightweight Directory Access Protocol) and RADIUS (Remote Authentication Dial-In User Service)), and different packet filtering schemes (e.g., filtering based on the direction of communication, the source and/or destination of a packet, and/or the type of TCP (Transfer Control Protocol) connection established). As shown in FIG. 1, switch manager instructions 116 enable an administrator to quickly configure multiple switches 100a, 100b to share a set of common characteristics (e.g., the same authentication scheme and the same tunneling protocols) by transmitting the same configuration information 118a, 118b to each switch 100a, 100b.

Referring to FIG. 2, after being configured, the virtual private network 102 permits secure communication between private networks 106, 110. For example, a computer 112 on a first private network 110 can securely send network packets to a computer 108 on a second private network 106 by tunneling 120 through the public network 104. An extranet switch 100a receiving a packet prior to transmission over the public network 104 can provide a tunnel 120 by

encrypting and/or encapsulating the network packet. Encryption encodes packet contents to prevent computers on the public network from reading the original contents. Encapsulation generates a new packet addressed to the extranet switch 100b at the end of the tunnel 120 and includes the original packet as the contents of the new packet. By analogy, encapsulation is like placing a mail envelope in a bigger envelope with a different mail address. Encapsulation prevents computers on the public network 104 from identifying the addresses of private network 106, 110 resources.

When the extranet switch 100b at the end of the tunnel 120 receives a packet, the extranet switch 100b can decrypt and de-encapsulate the packet for delivery to its destination 108. The second extranet switch 100b can also authenticate information received from the first extranet switch 100b to make sure a would be intruder is not masquerading as a member of the virtual private network 102.

As shown, a switch 100a can also provide tunnels for remote user 114 connected to the public network 104. For example, an employee can access private network 110 resources by connecting to an ISP (Internet Service Provider) and establishing a tunnel 122 with an extranet switch 100a. Again, the extranet switch 100a can authenticate the identity of the remote user 114 to prevent unauthorized access to the private network 110.

The extranet switch 100a can also connect tunnels. For example, if so configured, the switch could connect 124 tunnels 120 and 122 to enable the remote user 114 to also access resources on private network 106 via tunnels 122 and 120.

Referring to FIG. 3, switch manager instructions 116 receive 126 information specifying the configuration of multiple extranet switches. The bulk configuration information can be specified by a user, provided by a program that automatically configures switches, or copied from configuration information of a previously configured switch. After receiving 126 the configuration information, the switch manager instructions 116 transmit 128 data and/or instructions corresponding to the received configuration information to the extranet switches. Each extranet switch processes 130a, 130b the transmitted information to change its configuration in accordance with the transmitted information.

Referring to FIG. 4, an extranet switch 100a, 100b includes software and/or firmware instructions 130a, 130b that handle switch functions. Such functions can include authentication 132a tunnel management 134a, packet filtering 136a, etc. Each switch 100a, 100b can also include a script interface 138a that processes script commands. For example, a script command of “call omSET sing (“trustedFTPenabled” “ENABLED”)” configures the switch to allow processing of FTP (File Transfer Protocol) requests from trusted computers.

In one implementation, switch manager instructions 116 include instructions for a graphical user interface 144 (GUI), a script interface 140, and configuration 142 instructions that model the extranet switches and coordinate the exchange of information between the GUI 144 and the script interface 140. When a user specifies bulk configuration information via the GUI 144, the script interface 140 produces a script 118a, 118b that includes script commands for configuring the switches in accordance with the user specified information. Appendix A includes a sample configuring script. In the implementation described above, the switch manager 116 can export the configuration information 118a, 118b to extranet switches by transmitting the information 118a, 118b to a pre-determined switch directory via FTP (File Transfer

Protocol). The script interface **138a**, **138b** on the switches **100a**, **100b** detect and process the script upon its arrival.

The exporting technique described above is merely illustrative and a wide variety of other techniques could be used to coordinate communication between a computer executing switch manager instructions **116** and the different extranet switches **100a**, **100b**. For example, the communication need not use FTP nor need the information take the form of a script.

Referring to FIG. 5, the GUI provides a wizard (e.g., Bulk Configure Extranet Switches) that enables an administrator to bulk configure multiple extranet switches by interacting with a preprogrammed series of dialogs. The dialogs query an administrator for different sets of switch characteristics. The preprogrammed set of dialogs reduces the chances an administrator will forget to configure a particular set of switch characteristics.

Referring to FIG. 6, after invoking the bulk configuration wizard, an administrator can select one or more extranet switches to bulk configure. The manager will transmit configuration information only to the selected switches.

Referring to FIG. 7, the wizard permits an administrator to configure the selected switches to provide an account to a particular administrator. Since a single administrator may be in charge of all the switches in a virtual private network, establishment of an identical administrator account on the different switches enables the administrator to quickly login to the different switches using the same id and password.

Referring to FIG. 8, each switch may be individually configured to have a unique hostname (e.g., "NOC2000"). An administrator can bulk configure different switches to have the same DNS (domain name service) domain such as "myVPN.com". By defining a common domain for multiple switches, an administrator can thereafter refer to a particular switch by combining the domain name and the hostname (e.g., "myVPN.com/NOC2000"). Primary and backup DNS servers can translate the domain and hostname to a particular IP (Internet Protocol) address. Thus, by specifying a common domain, the administrator can identify a switch by a memorable text entry instead of a more cryptic IP address (e.g., "255.255.68.28").

Referring to FIG. 9, an administrator can configure the services offered by the switches. For example, the administrator can enable or disable different tunnel protocols (e.g., IPSec, PPTP, LT2P, and L2F). The GUI also gives the administrator the ability to enable or disable tunneling sessions initiated from within the private network served by a switch and tunneling sessions initiated from a source outside the private network (e.g., "public" tunnels).

The administrator can also enable or disable different communication protocols such as HTTP (HyperText Transfer Protocol), SNMP (Simple Network Management Protocol), FTP (File Transfer Protocol), and TELNET. Additionally, the manager gives the administrator the ability to control the types of communication allowed. For example, an administrator can enable or disable tunnels between two extranet switches (e.g., branch to branch communication), between two users tunneling to the same switch (e.g., end user to end user), and between a user and a branch office tunneling to the same switch.

Referring to FIG. 10, an administrator can bulk configure the SNMP traps reported by the switches and the host computers that will receive notification of the traps. SNMP traps allow an administrator to react to events that need attention or that might lead to problems. The switches allow the scripting of SNMP alerts so that a combination of system variables can signal an SNMP trap. The GUI permits the

administrator to not only enable or disable different types of traps, but also to provide the interval between execution of the SNMP scripts.

Referring to FIG. 11, an administrator can also configure RADIUS accounting performed by each selected switch. RADIUS is a distributed security system that uses an authentication server to verify dial-up connection attributes and authenticate connections. RADIUS accounting logs sessions with records containing detailed connection statistics. The administrator can enable and disable RADIUS accounting, configure the switches to use internal or external RADIUS servers, and specify how frequently RADIUS records are stored. By configuring the switches in a virtual private network to use the same RADIUS accounting methods, switch usage and access can be easily compared between the different switches.

Referring to FIG. 12, if enabled, an administrator can bulk configure the type of RADIUS authentication performed by the switches. For example, as shown, the switches can offer AXENT (AXENT OmniGuard/Defender), SecurID (Security Dynamics SecurID), MS-CHAP (Microsoft Challenge Handshake Authentication Protocol encrypted), CHAP (Challenge Handshake Authentication Protocol), and/or PAP (Password Authentication Protocol) authentication.

The administrator can also define a primary RADIUS server and one or more alternate servers. The primary server receives all RADIUS authentication inquiries unless it is out of service. In the event that the Primary Server is unreachable, the Switch will query the alternate RADIUS servers. By bulk configuring the servers used to provide RADIUS authentication, administrators can quickly route all RADIUS authentication requests to the same collection of RADIUS servers.

Referring to FIG. 13, switches may use LDAP authentication in addition to or in lieu of RADIUS authentication. An external LDAP Server such as the Netscape Directory Server can store remote access profiles. The switch queries the LDAP Server for access profile information when a user attempts to establish a tunnel connection. The Master LDAP Server is the primary server to process queries. Should the Master server become unavailable, the switch attempts to initiate a connection with the Slave servers. Bulk configuring different switches to use the same LDAP servers both eases the burden of switch management on the administrator and reduces the likelihood the administrator will inadvertently specify a different LDAP hierarchy on different switches.

After completing the bulk configuration wizard, the manager stores the specified configuration information, but does not transmit the information until the administrator specifically exports the configuration data. This provides administrators with a safeguard against accidentally bulk configuring the switches with unintended characteristics.

Reporting Capabilities

Referring to FIG. 14, in addition to configuring multiple extranet switches **100a**, **100b**, switch manager instructions **116** can also produce reports describing the extranet switches **100a**, **100b** in a virtual private network **102**. As shown, the extranet switches **100a**, **100b** can transmit configuration, capacity, and activity information for inclusion in a report.

Referring to FIG. 15, switch manager instructions **116** can transmit a script **152a**, **152b** that includes script commands requesting current switch **100a**, **100b** information. For example, a script command of "call omGET using ("security.trustedFTPenabled")" requests information

describing whether an extranet switch **100a**, **100b** is currently configured to accept FTP (File Transfer Protocol) requests from a trusted computer. Appendix B includes a sample script requesting information from a Contivity™ switch.

The switch **100a**, **100b** script interface **138a**, **138b** processes the script commands **128** and produces a file **150a**, **150b** including the requested information. The script interface **138a**, **138b** on the switch **100a**, **100b** can store the file in a pre-determined directory. The switch manager instructions **116** can then use FTP to retrieve the information **150a**, **150b**.

Again, a wide variety of other techniques could enable the switches **100a**, **100b** to communicate with the switch manager instructions **116**. Additionally, instead of the request-response model described above, the switches **100a**, **100b** could schedule periodic execution of a script and/or periodic transmission of the switch information **150a**, **150b**.

Referring to FIG. 16, the switch manager GUI can provide a menu of different reports that can be produced for selected extranet switches. The manager prepares the report by analyzing and/or including data imported from the different extranet switches.

Referring to FIG. 17, a first report can display different static attributes of the selected switches such as DNS details.

Referring to FIG. 18, a security report displays the security configurations of the selected switches such as the enabling/disabling of different tunneling and communication protocols. The security report can also list changes made to the selected switch configurations when such changes occurred (not shown). The report can also include information summarizing failed access attempts to the switches (not shown). This report enables an administrator to quickly view the different security configurations and any troublesome security statistics.

Referring to FIG. 19, a capacity report shows the current total capacity of tunnels that selected switches can provide and the total number of subscribers and/or users configured to use the switch. This report provides a simple but useful gauge of tunnel capacity. Based on the capacity report, an administrator can decide whether to add more subscribers to an available tunnel pool or to increase the size of tunnel pool, for example, by upgrading or adding an extranet switch.

Referring to FIG. 20, a trending report displays the number of tunnels for each tunnel technology provided by the different extranet switches over a user-specified amount of time. The report allows subscribers to select any number of currently defined switches or services.

Custom Views

Referring to FIG. 21, the switch manager GUI eases administration of a virtual private network extranet switches by collecting information about the entire network in a single display. As shown, the switch manager GUI displays configuration information imported from one or more extranet switches (e.g., via the import mechanism described in conjunction with FIG. 15). The GUI uses a split screen display that includes a navigation pane **200** listing different virtual private network switches **202**, subscribers **204**, and other information such as periodic scheduling **206** of management functions and scripts **208** that can perform these functions. As shown, the listing uses a hierarchical tree to display the virtual private network elements (e.g., an extranet switch). Each element can be the parent of one more sub-elements. An administrator can view a listed element in more detail by expanding the tree (e.g., clicking on the “-” or “+” next to an element). The tree display enables an

administrator to quickly find, add, remove, and configure different virtual private network extranet switches.

As shown, the display also provides a tabbed dialog control **210** that provides more information and management options for a virtual private network element currently selected in the navigation pane **200** (e.g., “Configuration Data” **212**). The control **210** includes dialogs for adding new elements to the tree from a palette **214**, for viewing and altering properties **216** of a selected element, for a list of wizards **218** that perform tasks frequently used with a selected element or sub-element, and a list of network links **222** that enable an administrator to manually configure an individual extranet switch. By providing management options corresponding to an element selected in the navigation pane **200**, the GUI presents only a relevant subset of a wide variety of different management features at a given moment.

Referring to FIGS. 22–26, the GUI enables an administrator to quickly view and modify the configuration of any particular switch in the virtual private network from within a single application. For example, as shown, an administrator can quickly add a new subscriber **226** to the virtual private network. Briefly, a subscriber is any entity that uses a virtual private network service (e.g., a tunnel protocol). For example, service providers typically use the same extranet switch to provide virtual private network services to different organizations. In this case, each organization could be considered a subscriber. Subscribers can also be individual users.

As shown in FIG. 22, after selecting the “Configuration Data” element **212**, a palette tab presents different elements sub-elements that can be added to the selected virtual private network element **212**. A new subscriber **226** can be added by dragging-and-dropping the subscriber **224** palette selection onto the “Configuration Data” element **212**. As shown in FIG. 23, the administrator can rename the new subscriber **226**. As shown in FIG. 24, by selecting the new subscriber **226**, selecting the “palette” tab **214**, and dragging a “VPN Service” **228** (e.g., a tunnel) from the palette onto the new subscriber **226**, the administrator can also configure a switch or switches to offer a particular tunneling protocol.

As shown in FIG. 25, the administrator can name the tunnel, define the tunneling technology used by the tunnel (e.g., L2TP), and enter the tunnel starting and ending points which, as shown, are extranet switches.

As shown in FIG. 26, after configuring different subscribers and switches, the GUI provides an administrator with a variety of different methods of looking at a virtual private network. For example, as shown, by expanding a subscriber **232** an administrator can quickly see shortcuts to the extranet switches **236**, **238** offering tunnels for subscriber use. Alternatively, as shown in FIG. 27, the administrator can view the tunneling technologies offered by a particular switch **240** by using the navigation pane **200** to select the switch’s tunnel element **242**. The properties dialog **244** displays the configuration of the different tunneling technologies.

The different presentations of the data (e.g., subscriber based and switch based) described above enable the administrator to both ensure that subscribers are adequately served and that individual switches are configured as desired.

Referring to FIGS. 28–29, the process described above (i.e., selecting an element from the tree and using the tabbed dialog to view and modify the element’s characteristics) can be used to configure a variety of virtual private network characteristics. For example, by selecting a switch **240** from the navigation pane **200**, the administrator can view and

modify the switch's **240** characteristics. As shown in FIG. **28**, an administrator can add RADIUS Authentication **244** to a switch **240** by dragging-and-dropping the RADIUS Authentication Server palette selection **242** onto the selected-switch **240**. As shown in FIG. **29**, the administrator can then set different RADIUS authentication settings for the switch **244**. An administrator can use a similar technique to add and/or configure SNMP (Simple Network Management Protocol) settings, switch interfaces to private and/or public networks, Ethernet settings, IPX (Internetwork Packet Exchange) settings, and other extranet switch features displayed in the switch palette. Appendix C includes screenshots of the different palette elements and their properties that can be used to configure an extranet switch.

The alterations to the switches, for example, adding RADIUS authentication to a switch, while immediately represented to the administrator, is not exported until explicitly requested by the administrator. Again, this gives the administrator a chance to avoid unintended modifications.

Referring to FIGS. **30–31**, beyond viewing and modifying switch characteristics, an administrator can use the GUI to organize information for easy access and identification of different elements. For example, as shown in FIG. **30**, an administrator can drag a folder **250** from the palette onto an element. The administrator can rename the dragged folder **252** (e.g., to "Subscribers") and drag-and-drop different subscribers into the folder **252**. As shown in FIG. **31**, a similar technique enables an administrator to organize different switches into different groupings such as switches using LDAP **254** for authentication and switches using RADIUS **256**.

Integrated Access to a Switch's Configuration Mechanisms

As previously described, an extranet switch such as the Contivity™ switch can include a web-server and different network pages (e.g., HTML (HyperText Markup Language) documents) that enable an administrator to individually configure an extranet switch. By navigating to a switch web-server, an administrator can view and/or modify a switch's configuration.

Referring to FIG. **32**, the GUI can present a menu **260** of network links (e.g., link **268**) to web-pages offered by a selected extranet switch **270**. As shown, the menu **260** includes a description of the link **272** and a corresponding URL (Universal Resource Locator) identifying a web-page offered by a switch. As shown, the URL includes designation of a communication protocol (e.g., HTTP (HyperText Transfer Protocol) **262**, an IP address **264**, and the location of a particular page at the specified IP address **268**. When a user selects a link from the menu **260**, the switch manager can transmit an HTTP request for the selected URL. Alternately, the switch manager can instantiate or call a network browser and pass the selected URL. The GUI prepares each URL in the menu **260** by prepending a switch's IP address **264** to a predefined set of web-page locations **266**.

By providing the link menu in conjunction with the navigation pane **200**, administrators can quickly access a desired page on any particular switch and can also quickly access the same page (e.g., the users page) on a variety of different switches, one after another. Additionally, the menu **260** obviates the need to remember the different extranet switch URLs or expend the time needed to navigate through any menu provided by the switch itself which necessitates potentially long waits for information to be transmitted to the switch manager.

As shown, the web-pages include pages that control how a switch handles users (FIG. **33**), branch offices (FIG. **34**), packet filters (FIG. **35**), groups of users (FIG. **36**), access

hours (FIG. **37**), and other information such as a menu that tailors a web-based configuration session (FIG. **39**). Descriptions of the functions of these different web-pages is described in the New Oak Communications Extranet Access Switch Administrators Guide, pages 82–138 of which are incorporated by reference herein.

Other Embodiments

The embodiments described above should not be considered limiting. For example, one of skill in the art could quickly construct a switch manager that perform the functions described above using different GUI controls or a different arrangement of GUI controls.

Additionally, the techniques described here are not limited to any particular hardware or software configuration; they may find applicability in any computing or processing environment. The techniques may be implemented in hardware or software, or a combination of the two. Preferably, the techniques are implemented in computer programs executing on programmable computers that each include a processor, a storage medium readable by the processor (including volatile and non-volatile memory and/or storage elements), at least one input device, and one or more output devices. Program code is applied to data entered using the input device to perform the functions described and to generate output information. The output information is applied to one or more output devices.

Each program is preferably implemented in a high level procedural or object oriented programming language to communicate with a computer system. However, the programs can be implemented in assembly or machine language, if desired. In any case, the language may be a compiled or interpreted language.

Each such computer program is preferable stored on a storage medium or device (e.g., CD-ROM, hard disk or magnetic diskette) that is readable by a general or special purpose programmable computer for configuring and operating the computer when the storage medium or device is read by the computer to perform the procedures described in this document. The system may also be considered to be implemented as a computer-readable storage medium, configured with a computer program, where the storage medium so configured causes a computer to operate in a specific and predefined manner.

Other embodiments are within the scope of the following claims.

What is claimed is:

1. A graphical user interface for use in managing a virtual private network, the graphical user interface comprising:

a display of virtual private network elements, the different elements being selectable by a user;

a collection of palettes that provide virtual private network sub-elements associated with the virtual private network elements, the palette displayed being controlled by user selection of an element;

a collection of properties dialogs that receive user input configuring the virtual private network elements and/or sub-elements, the properties dialog displayed being controlled by user selection of an element from the display of virtual private network elements; and

a wizard that enables the user to configure one or more of the virtual private network elements by interacting with a preprogrammed series of dialogs which query the user for different sets of virtual private network element characteristics.

11

- 2. The graphical user interface of claim 1, wherein the display of virtual private network elements comprises a hierarchical tree the displays both virtual private network elements and associated virtual private network sub-elements.
- 3. The graphical user interface of claim 1, wherein the virtual private network elements comprise subscribers.
- 4. The graphical user interface of claim 1, wherein the virtual private network elements comprise computers offering virtual private network functions.
- 5. The graphical user interface of claim 4, wherein the computers comprise extranet switches.
- 6. The graphical user interface of claim 4, wherein the sub-elements comprise SNMP properties.
- 7. The graphical user interface of claim 4, wherein the sub-elements comprise an authentication technique.
- 8. The graphical user interface of claim 1, wherein the sub-elements comprise tunnels.
- 9. The graphical user interface of claim 1, further comprising modifying a virtual private network element listed in the hierarchical tree by dragging and dropping a virtual private network element from a displayed palette.

12

- 10. A graphical user interface for use in managing a virtual private network, the graphical user interface comprising:
 - a hierarchical tree that includes different extranet switches, the different extranet switches being selectable by a user;
 - a collection of palettes that provide groupings of extranet switch attributes, the palette displayed being controlled by user selection of an extranet switch;
 - a collection of properties dialogs that collect information associated with the extranet switch attributes, the properties dialog displayed being controlled by user selection of an element; and
 - a wizard that enables the user to configure one or more of the virtual private network elements by interacting with a preprogrammed series of dialogs which query the user for different sets of virtual private network element characteristics.

* * * * *

UNITED STATES PATENT AND TRADEMARK OFFICE
CERTIFICATE OF CORRECTION

PATENT NO. : 6,765,591 B2
DATED : July 20, 2004
INVENTOR(S) : Matthew W. Poisson, Melissa L. Desroches and James M. Milillo

Page 1 of 1

It is certified that error appears in the above-identified patent and that said Letters Patent is hereby corrected as shown below:

Column 4,

Line 17, delete "would be" and insert -- would-be --.


Column 4, line 63 through Column 5, line 2,

Delete the following sentences:

"Appendix A includes a sample configuring script. In the implementation above, the switch manager 116 can export the configuration information 118a, 118b to extranet switches by transmitting the information 118a, 118b to a pre-determined switch directory via FTP (File Transfer Protocol). The script interface 138a, 138b on the switches 100a, 100b detect and process the script upon its arrival."

Signed and Sealed this

Twenty-eighth Day of February, 2006

A handwritten signature in black ink on a light gray dotted background. The signature reads "Jon W. Dudas" in a cursive style.

JON W. DUDAS

Director of the United States Patent and Trademark Office