

Exhibit 5



US008537757B2

(12) **United States Patent**
Arviv et al.

(10) **Patent No.:** **US 8,537,757 B2**
(45) **Date of Patent:** **Sep. 17, 2013**

(54) **ADAPTIVE CALL ADMISSION CONTROL
FOR USE IN A WIRELESS
COMMUNICATION SYSTEM**

(58) **Field of Classification Search**

None

See application file for complete search history.

(75) Inventors: **Eli Arviv**, Modiin (IL); **Brian Spinar**,
Poway, CA (US); **Kenneth L.**
Stanwood, Cardiff by the Sea, CA (US);
David Gazelle, La Jolla, CA (US); **Ofer**
Zimmerman, Modiin (IL); **Penny**
Efraim, Kfar Sava (IL); **Yair Bourlas**,
San Diego, CA (US); **Sheldon L.**
Gilbert, San Diego, CA (US)

(56) **References Cited**

U.S. PATENT DOCUMENTS

3,949,404 A 4/1976 Fletcher et al.
4,495,619 A 1/1985 Acampora

(Continued)

FOREIGN PATENT DOCUMENTS

EP 0507384 B1 10/1992
EP 0845916 B1 6/1998

(Continued)

OTHER PUBLICATIONS

"Asynchronous Transfer Mode (ATM) Technical Overview", 2nd
Edition, Prentice Hall, Oct. 1995, Chapter 3, pp. 21-25.

(Continued)

Primary Examiner — Kevin C Harper

(74) *Attorney, Agent, or Firm* — Procopio, Cory, Hargreaves
& Savitch LLP

(73) Assignee: **Wi-Lan, Inc.**, Ottawa (CA)

(*) Notice: Subject to any disclaimer, the term of this
patent is extended or adjusted under 35
U.S.C. 154(b) by 0 days.

(21) Appl. No.: **13/487,013**

(22) Filed: **Jun. 1, 2012**
(Under 37 CFR 1.47)

(65) **Prior Publication Data**

US 2013/0064097 A1 Mar. 14, 2013

Related U.S. Application Data

(60) Continuation of application No. 12/414,363, filed on
Mar. 30, 2009, now Pat. No. 8,213,359, which is a
continuation of application No. 11/693,546, filed on
Mar. 29, 2007, now Pat. No. 7,529,204, which is a
continuation of application No. 11/350,464, filed on
Feb. 8, 2006, now Pat. No. 7,289,467, which is a
division of application No. 10/032,044, filed on Dec.
21, 2001, now Pat. No. 7,023,798.

(60) Provisional application No. 60/258,428, filed on Dec.
27, 2000.

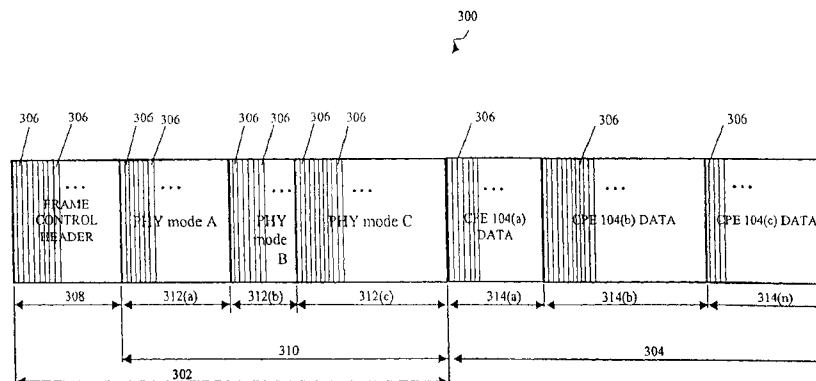
(51) **Int. Cl.**
H04W 4/00 (2009.01)

(52) **U.S. Cl.**
USPC **370/328; 370/465**

(57) **ABSTRACT**

The invention relates to communication systems and to sys-
tems and methods for implementing adaptive call admission
control (CAC) in such systems. Adaptive call admission con-
trol can determine what CPE to base station calls (connec-
tions) are allowed at any given time. CAC, coupled with
precedence, can further determine what connections are sus-
pended if less bandwidth is available than is currently com-
mitted. Multiple techniques are disclosed to select connec-
tions for suspension. These techniques include suspending
enough connections through the affected CPE until there is
enough bandwidth to meet the remaining commitment, ran-
domly (or in a round robin fashion) choosing connection to
suspend from the entire set of connection, and using prece-
dence priority levels.

24 Claims, 6 Drawing Sheets



(56)

References Cited**U.S. PATENT DOCUMENTS**

| | | | | |
|--------------|------|---------|-----------------------|---------|
| 5,130,983 | A | 7/1992 | Heffner, III | |
| 5,297,144 | A | 3/1994 | Gilbert et al. | |
| 5,420,851 | A | 5/1995 | Seshadri et al. | |
| 5,444,698 | A | 8/1995 | Kito | |
| 5,471,645 | A | 11/1995 | Felix | |
| 5,511,082 | A | 4/1996 | How et al. | |
| 5,615,212 | A | 3/1997 | Ruszczak et al. | |
| 5,638,371 | A | 6/1997 | Raychaudhuri et al. | |
| 5,638,374 | A | 6/1997 | Heath | |
| 5,675,573 | A | 10/1997 | Karol et al. | |
| 5,751,708 | A | 5/1998 | Eng et al. | |
| 5,768,254 | A | 6/1998 | Papadopoulos et al. | |
| 5,828,695 | A | 10/1998 | Webb | |
| 5,857,147 | A | 1/1999 | Gardner et al. | |
| 5,859,619 | A | 1/1999 | Wu et al. | |
| 5,890,055 | A | 3/1999 | Chu et al. | |
| 6,006,069 | A | 12/1999 | Langston | |
| 6,016,311 | A | 1/2000 | Gilbert et al. | |
| 6,016,313 | A | 1/2000 | Foster, Jr. et al. | |
| 6,038,455 | A | 3/2000 | Gardner et al. | |
| 6,094,421 | A | 7/2000 | Scott | |
| 6,112,080 | A | 8/2000 | Anderson et al. | |
| 6,141,317 | A | 10/2000 | Marchok et al. | |
| 6,519,462 | B1 | 2/2003 | Lu et al. | |
| 6,636,500 | B2 | 10/2003 | Krishnamoorthy et al. | |
| 7,023,798 | B2 | 4/2006 | Bourlas et al. | |
| 7,050,407 | B1 | 5/2006 | Frazer et al. | |
| 7,289,467 | B2 | 10/2007 | Bourlas et al. | |
| 7,379,441 | B2 * | 5/2008 | Stanwood et al. | 370/337 |
| 2001/0028678 | A1 * | 10/2001 | Kato et al. | 375/222 |
| 2002/0061006 | A1 | 5/2002 | Soliman | |
| 2002/0086707 | A1 * | 7/2002 | Struhsaker et al. | 455/561 |

FOREIGN PATENT DOCUMENTS

| | | | |
|----|---------|----|---------|
| EP | 0891060 | A3 | 1/1999 |
| WO | 9222162 | A1 | 12/1992 |
| WO | 9909779 | A1 | 2/1999 |
| WO | 9953700 | A1 | 10/1999 |
| WO | 0049824 | A1 | 8/2000 |

OTHER PUBLICATIONS

C.E Shannon "A Mathematical Theory of Communication", Bell System Technical Journal, pp. 379-423 (Part I), 623-656 (Part II), Jul. 1948.

H.C. Papadopoulos et al., Reduction of Mixed Co-channel Interference in Microcellular STDD Systems, Vehicular Technology Conference, 1995 IEEE 45th, vol. 2, pp. 759-763.

L.H. Charles Lee, "Convolutional Coding, Fundamentals and Applications", Artech House, Inc., 1997, p. 11-51.

Lin et al., "Error Control Coding, fundamentals and Applications", Prentice-Hall Computer Applications in Electrical Engineering Series., 1993, pp. 315-349.

Redl et al., "An Introduction to GSM", Artech House, Inc., 1995; pp. 84, 85 and 95.

Sampei et al., "Adaptive Modulation/TDMA Scheme for Personal Multi-Media Communication Systems", Proceedings of the Global Telecommunications Conference, U.S., New York, IEEE, Nov. 28, 1994, pp. 989-993.

Ue et al., "Symbol Rate and Modulation Level Controlled Adaptive Modulation/TDMA/TDD for Personal Communication Systems", Proceedings of the Vehicular Technology Conference, U.S. New York, IEEE, vol. Conf. 45, Jul. 25, 1995, pp. 306-310.

Ulm et al., "Data-Over-Cable Interface Specifications, Radio Frequency Interface Specification", Hewlett Packard Interim Specification, Doc. Control No. SP-RFII01-970321, published Mar. 21, 1997 by MCNS Holdings, L.P., Section 6, pp. 43-85.

Wolf et al., "On the Weight Distribution of Linear Block Codes Formed From Convolutional Codes", IEEE, IEEE Transactions on Communications, vol. 44:9, Sep. 1996.

U.S. District Court, Northern District of California, "Amended Complaint for Declaratory Judgment Demand for Jury Trial" filed Sep. 30, 2008 in Case No. 5:08-cv-4555.

J.M. Torrence, L. Hanzo, "Upper Bound Performance of Adaptive Modulation in a Slow Rayleigh Fading Channel," IEEE Electronics Letters, vol. 32, p. 718, Apr. 1996.

J. Pons and J. Dunlop, "Bit Error Rate Characterisation and Modeling for GSM", IEEE 1998, pp. 3722-3727.

P. Bender et al., "CDMA/HDR: A Bandwidth Efficient High Speed Wireless Data Service for Nomadic Users", Communications Magazine, IEEE, vol. 38, No. 7, Jul. 2000, pp. 70-77.

P. Jain, "On the Impact of Channel and Channel Quality Estimation on Adaptive Modulation", Dec. 2002.

J.B. Andersen et al., "Prediction of Future Fading Based on Past Measurements", Vehicular Technology Conference, VTC 99, vol. 1, pp. 151-155.

G. Narlikar et al., "Designing Multihop Wireless Backhand Networks with Delay Guarantees", Bell Labs, 2005.

* cited by examiner

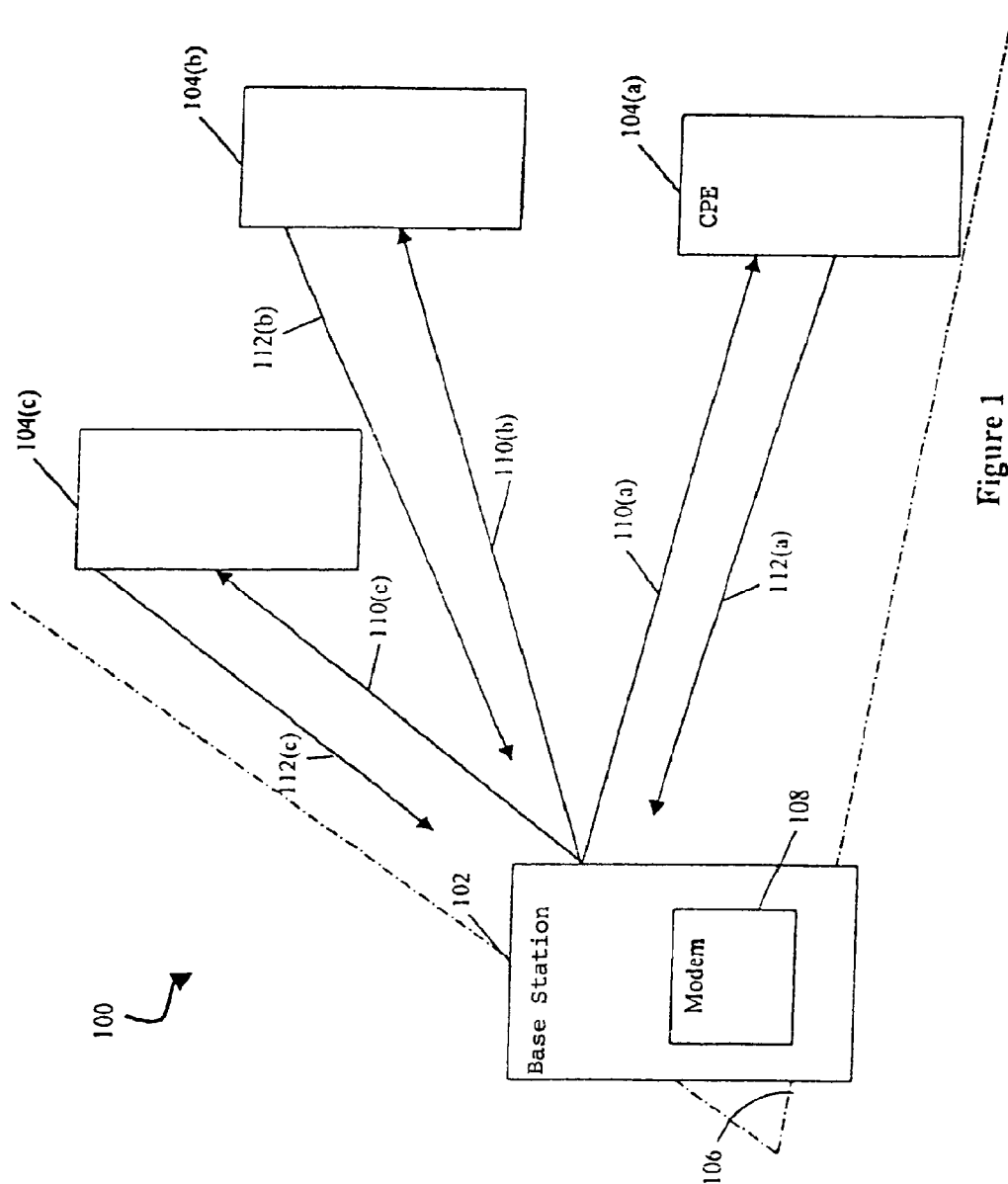


Figure 1

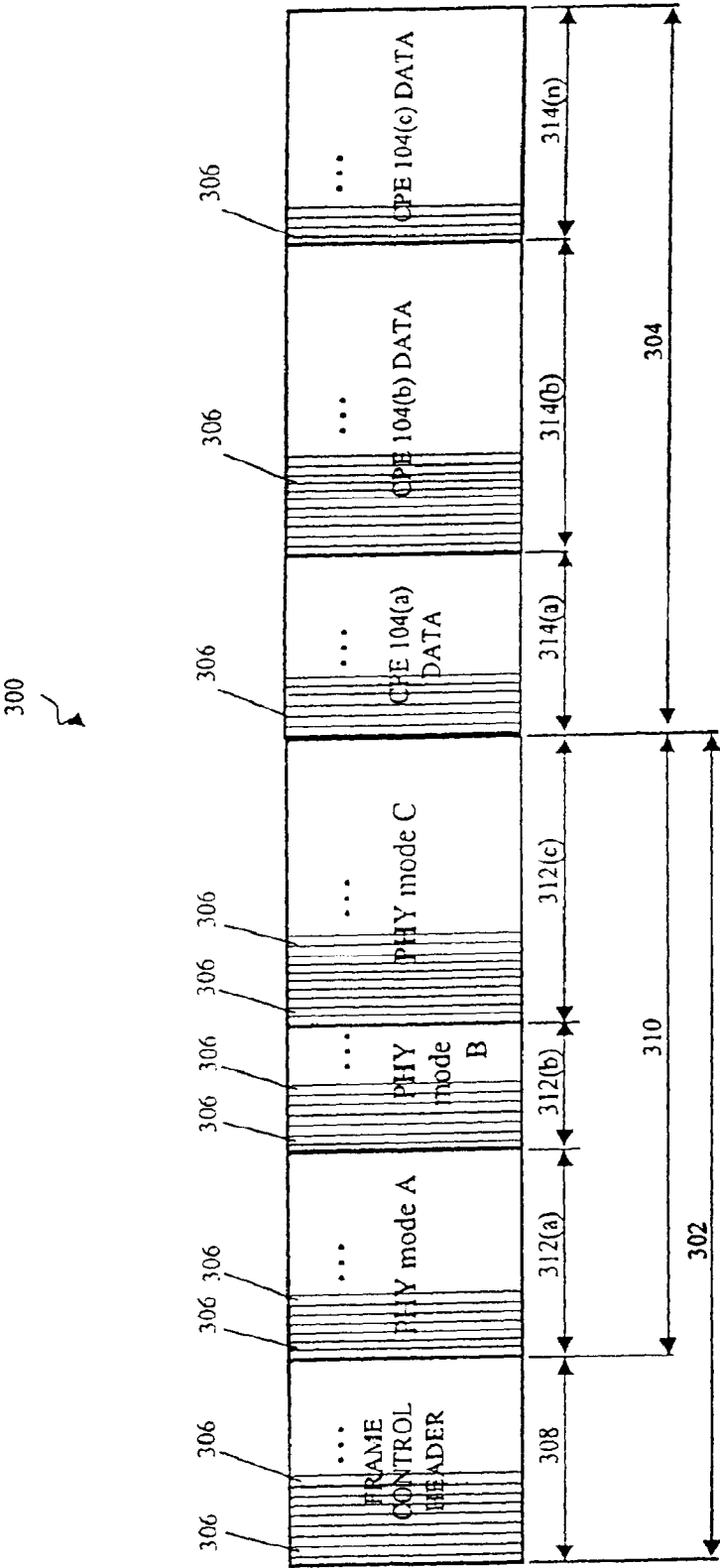


FIGURE 2

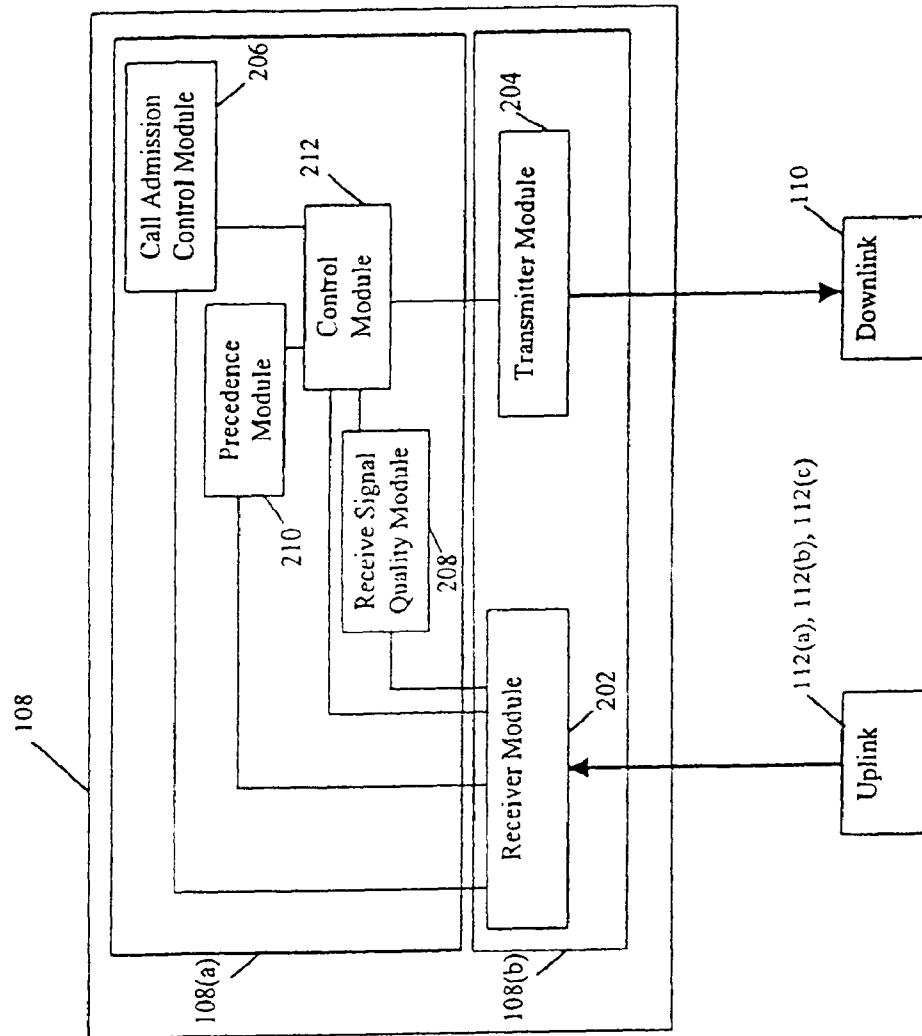


Figure 3

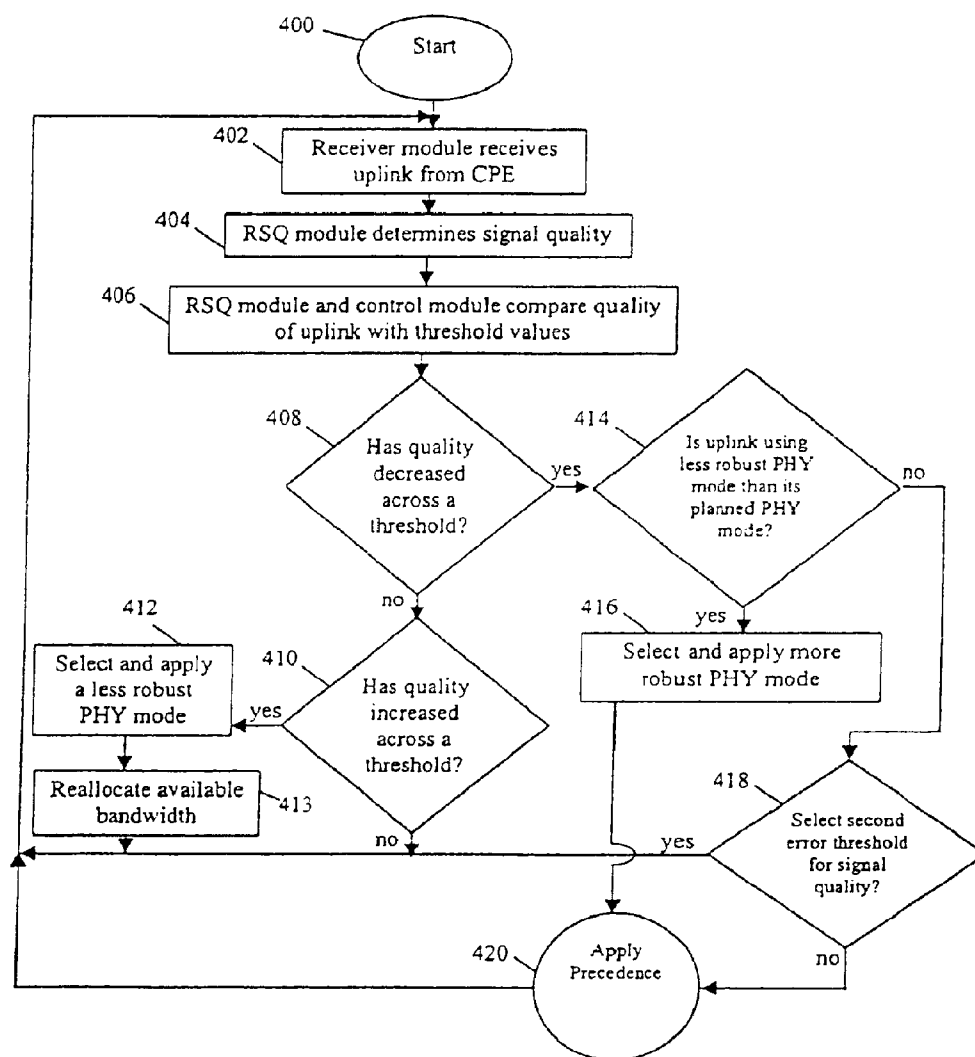


FIGURE 4

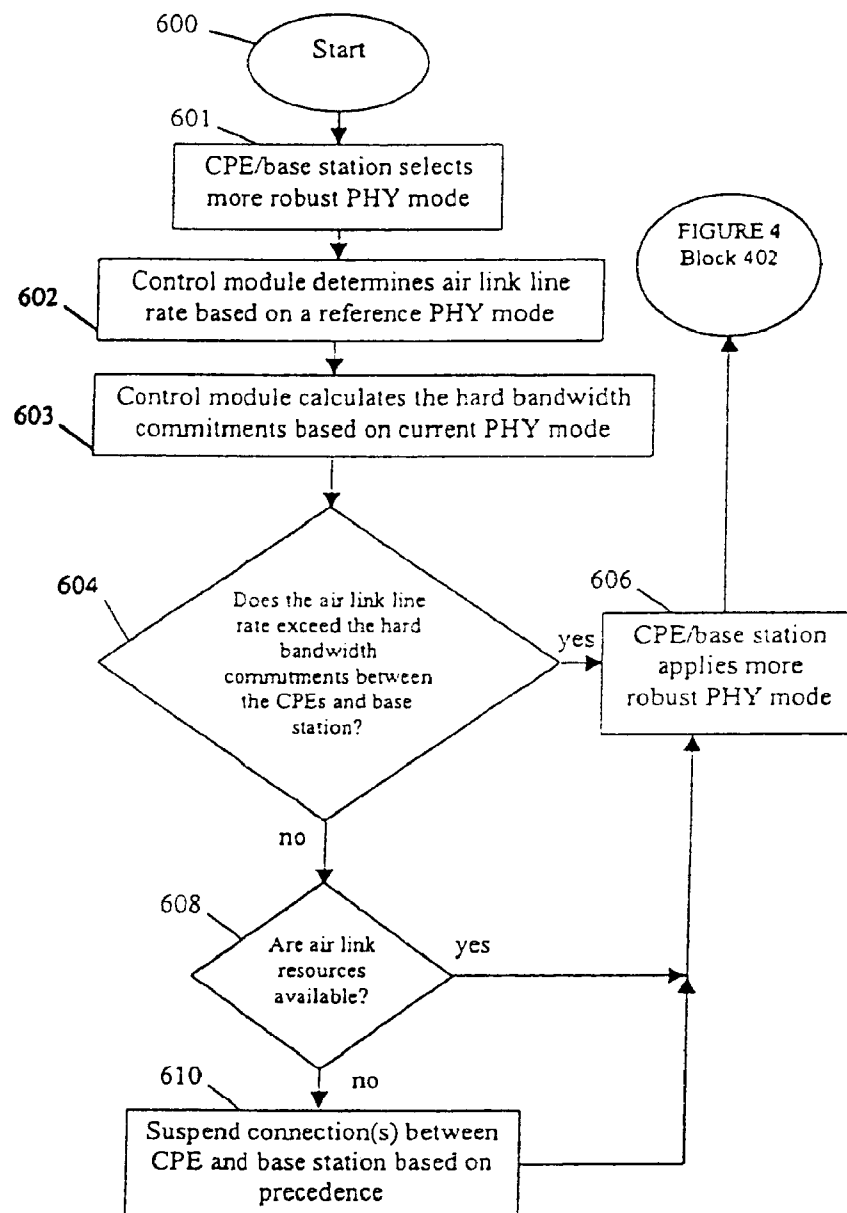
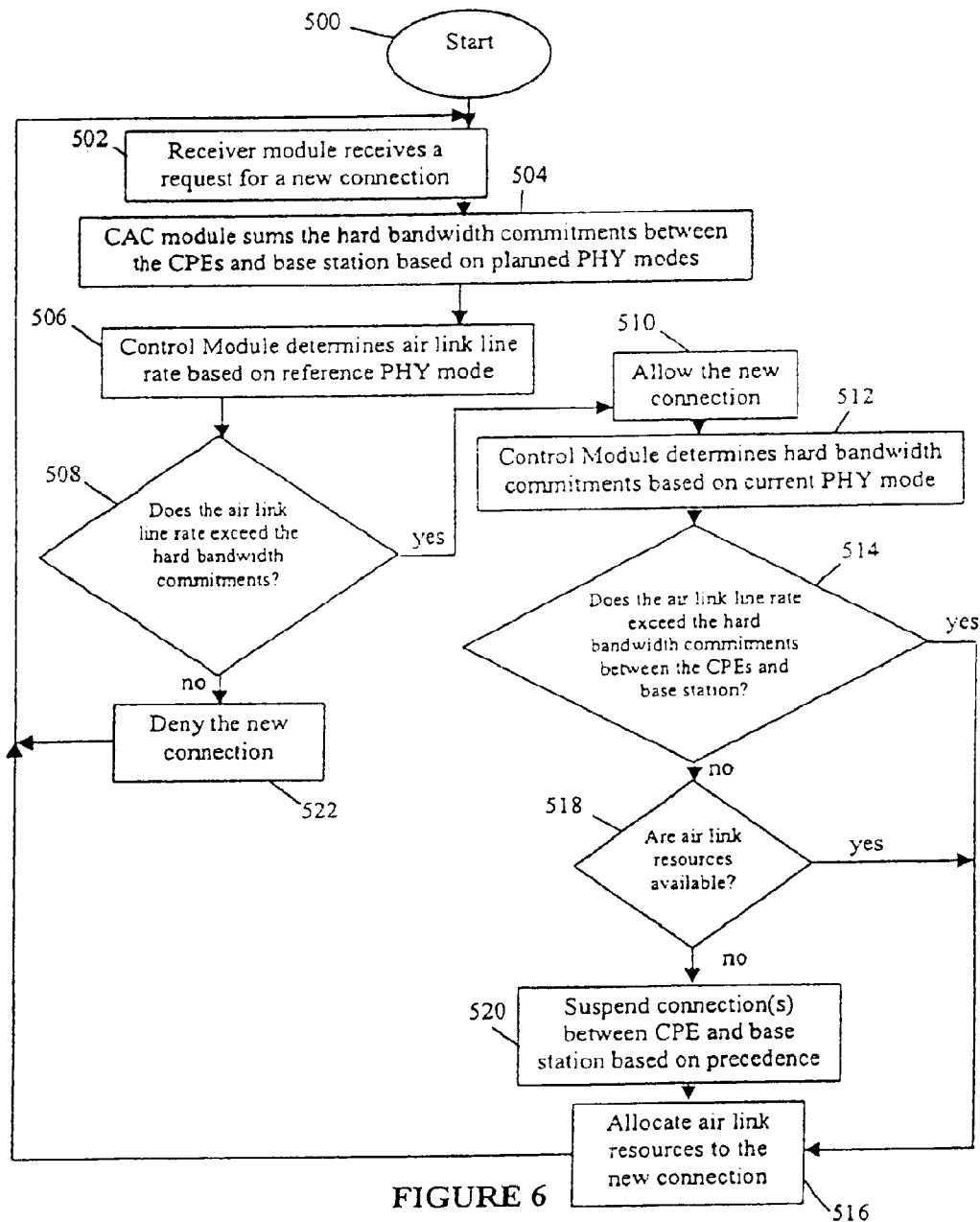


FIGURE 5



1

ADAPTIVE CALL ADMISSION CONTROL FOR USE IN A WIRELESS COMMUNICATION SYSTEM

RELATED APPLICATIONS

This application is a continuation of U.S. application Ser. No. 12/414,363, filed Mar. 30, 2009, which is a continuation of U.S. application Ser. No. 11/693,546, filed Mar. 29, 2007, now U.S. Pat. No. 7,529,204, which is a continuation of U.S. application Ser. No. 11/350,464, filed Feb. 8, 2006, now U.S. Pat. No. 7,289,467, which is a divisional of U.S. application Ser. No. 10/032,044, filed Dec. 21, 2001, now U.S. Pat. No. 7,023,798, which claims priority to U.S. provisional patent application Ser. No. 60/258,428, filed Dec. 27, 2000, all entitled ADAPTIVE CALL ADMISSION CONTROL FOR USE IN A COMMUNICATION SYSTEM, all of which are incorporated herewith in their entirety by reference.

BACKGROUND OF THE INVENTION

1. Field of the Invention

The present invention relates to communication systems and to a system and method for implementing adaptive call admission control in such systems.

2. Description of the Related Art

A wireless communication system facilitates two-way communication between a plurality of subscriber units (fixed and portable) and a fixed network infrastructure. Exemplary communication systems include mobile cellular telephone systems, personal communication systems ("PCS"), and cordless telephones. An objective of these wireless communication systems is to provide communication channels on demand between the subscriber units and their respective base stations in order to connect a subscriber unit end user with the fixed network infrastructure (usually a wire-line system). In the wireless systems having multiple access schemes, a time "frame" is used as the basic information transmission unit. Each frame is sub-divided into a plurality of time slots. Subscriber units typically communicate with their respective base station using a "duplexing" scheme thus allowing for the exchange of information in both directions of the connection.

Transmissions from the base station to the subscriber units are commonly referred to as "downlink" transmissions. Transmissions from the subscriber units to the base station are commonly referred to as "uplink" transmissions. Depending upon the design criteria of a given system, wireless communication systems have typically used either time division duplexing ("TDD") or frequency division duplexing ("FDD") methods to facilitate the exchange of information between the base station and the subscriber units.

SUMMARY OF THE INVENTION

The systems and methods have several features, no single one of which is solely responsible for its desirable attributes. Without limiting the scope as expressed by the claims which follow, its more prominent features will now be discussed briefly. After considering this discussion, and particularly after reading the section entitled "Detailed Description" one will understand how the features of the system and methods provide several advantages over traditional communication systems.

One aspect is a communication system that is configured to control the admission of new connections and the suspension of existing connections between a base station and customer

2

premise equipments (CPEs), wherein the base station and the CPEs are each configured to increase or decrease the robustness of their transmission modulation technique by adapting their PHY mode. The system comprises a first CPE having a first modem configured to modulate data in a communication link using a first current PHY mode and a first planned PHY mode, a second CPE having a second modem configured to modulate data in a communication link using a second current PHY mode and a second planned PHY mode, and a base station having a third modem configured to transmit and receive data to and from the first and second CPEs. The system further comprises a call admission control (CAC) module configured to determine whether to allow a new connection between the first CPE and the base station or between the second CPE and the base station based on a comparison of a total air link line rate between the first and second CPEs and the base station, wherein the total air link line rate is based on a reference PHY mode, with a bandwidth commitment value between the base station and the first and second CPEs, wherein the bandwidth commitment is based on the first and second planned PHY modes.

Another aspect is a method for controlling the admission of connections in a wireless communication system between a base station and associated CPEs, including a requesting CPE. The method comprises receiving a request for a new connection from a requesting CPE, summing the hard bandwidth commitments between a base station and associated CPEs, including the new connection and existing connections, based on a planned PHY mode for each connection, and determining an air link line rate between the base station and the associated CPEs based on a reference PHY mode. The method further includes if the air link line rate exceeds the hard bandwidth commitments, accepting the new connection and determining a second hard bandwidth commitments for the existing connections between the base station and the associated CPEs based on a current PHY mode for each connection, else denying the new connection. The method still further includes if the air link line rate exceeds the second hard bandwidth commitments, allocating air link resources to the new connection, else determining whether additional air link resources are available, and if additional air link resources are available, allocating the air link resources to the new connection, else suspending at least one of the existing connections between the base station and the associated CPEs.

BRIEF DESCRIPTION OF THE DRAWINGS

FIG. 1 is a simplified block diagram of a wireless communication system including a base station and one or more CPEs.

FIG. 2 is an illustration of the structure of a Time Division Duplex ("TDD") frame.

FIG. 3 is a block diagram of a modem.

FIG. 4 is a flowchart illustrating the process of adaptively adjusting a PHY mode for an uplink connection between the base station and a CPE.

FIG. 5 is a flowchart illustrating the process of precedence being applied to existing connections between the CPE and the base station.

FIG. 6 is a flowchart illustrating the process of call admission control to a new connection between a CPE and the base station.

DETAILED DESCRIPTION

The following detailed description is directed to certain specific embodiments of the invention. However, the inven-

tion can be embodied in a multitude of different systems and methods. In this description, reference is made to the drawings wherein like parts are designated with like numerals throughout.

In connection with the following description many of the components of the various systems, some of which are referred to as a "module," can be implemented as software, firmware or a hardware component configured to perform one or more functions or processes. Hardware components can include, for example, a Field Programmable Gate Array (FPGA) or Application-Specific Integrated Circuit (ASIC). Such components or modules may reside on the addressable storage medium and configured to execute on one or more processors. Thus, a module may include, by way of example, components, such as software components, object-oriented software components, class components and task components, processes, functions, attributes, procedures, subroutines, segments of program code, drivers, firmware, microcode, circuitry, data, databases, data structures, tables, arrays, and variables. The functionality provided for in the components and modules may be combined into fewer components and modules or further separated into additional components and modules. Additionally, the components and modules may advantageously be implemented to execute on one or more computers.

FIG. 1 is a block diagram of an exemplary wireless communication system 100. Alternatively, the methods and systems herein disclosed can be implemented in wired communication systems (not shown). One exemplary broadband wireless communication system is described in U.S. Pat. No. 6,016,311, by Gilbert et al., issued Jan. 18, 2000, entitled "Adaptive Time Division Duplexing Method and Apparatus for Dynamic Bandwidth Allocation within a Wireless Communication System," hereby incorporated by reference. The system 100 includes a base station 102 and at least one customer premise equipment. The system depicted in FIG. 1 shows three CPEs 104(a)-(c). More or fewer CPEs can be used. The CPEs and the base station receive and transmit data along wireless communication links 110(a)-(c), 112(a)-(c).

FIG. 1 does not show buildings or other physical obstructions (such as trees or hills, for example), that may cause channel interference between data from communication links 110, 112. The CPEs 104 and the base station 102 communicate by transmitting their data as radio frequency signals. The term channel refers to a band or range of radio frequencies of sufficient width for communication. For example, the range of frequencies from 26.500 GHz to 26.525 GHz would provide a 25 MHz wide channel. Although the following discussion uses the example of a system that transmits information within the Local Multi-Point Distribution Services (LMDS) band at frequencies of approximately 28 GHz, the invention is not so limited. Information can be transmitted at various frequencies and ranges including, for example, 10 GHz to 66 GHz using Quadrature Amplitude Modulation (QAM) symbols. The systems and methods described herein can also be used in a Multichannel Multi-point Distribution Service (MMDS) which operates below 10 GHz. In the MMDS, Orthogonal Frequency Division Multiplexing (OFDM) symbols may be transmitted between the base station and CPEs as an alternative to single carrier QAM modulation. In such a system, the methods and systems are applied to one or more of the OFDM subchannels.

Referring again to FIG. 1, the communication links 110(a), 110(b), 110(c) are referred to as downlinks (i.e., from the base station 102 to the CPE's 104) and can operate on a point (base station)-to-multi-point (CPE's) basis. Transmissions to and from the base station 102 can be directional in nature, and thus

limited to a particular transmission sector 106 of the base station 102. Within a given sector 106, CPEs 104(a), 104(b), 104(c) receive the same transmission along their respective downlinks 110(a), 110(b), 110(c). To distinguish between data intended for a specific CPE, the CPEs can monitor control information in their respective downlink 110(a), 110(b), 110(c) and typically retain only the data intended for them. In communication systems that have multiple sectors, the base station 102 can include a sectored active antenna array (not shown) which is capable of simultaneously transmitting to multiple sectors. In one embodiment of the system 100, the active antenna array transmits to four independent sectors.

The communication links 112(a), 112(b), 112(c) are referred to as an uplink (i.e., from the CPEs 104 to the base station 102) and can operate on a point-to-point basis. Thus, in FIG. 1, each CPE 104(a), 104(b), 104(c) originates its own uplink 112(a), 112(b), 112(c). Communication with the base station 102 is bi-directional and can be multiplexed on the basis of Time Division Duplexing (TDD). For a TDD transmission from, for example, CPE 104(a), CPE 104(a) would send its data along communication link 112(a) to the base station 102 during a preassigned time slot in a transmission frame. The specific frame structures of the uplink and downlink will be discussed further below.

Alternatively, the system can employ Frequency Division Duplexing (FDD). In such an FDD system, duplexing of transmissions between the base station and the CPEs is performed in the frequency domain. Different sets of frequencies are allocated for uplink and downlink transmissions. The systems and methods described herein can be used in such an FDD system.

Each CPE 104 is further coupled to a plurality of end users that may include both residential and business customers. Each customer can have one or more connections between the CPE and the base station. Consequently, each end user connection can have different and varying usage and bandwidth requirements. Each CPE 104(a)-(c) may service several hundred or more end users, but at least one end user will be assigned to transmit and receive data via at least one connection through each CPE 104.

The data transmitted along the communication links 110, 112 is in analog form, and thus a modem 108 is used to modulate the digital data prior to transmission. FIG. 1 illustrates the modem 108 being located at the base station 102, however, a similar or identical modem 108 may be used at the other end of the downlinks 110(a), 110(b), 110(c) to demodulate the received analog data. Thus, the modems 108 in the base station and each CPE are used for uplinking data from the CPEs to the base station and for downlinking data from the base station to the CPEs.

The base station and CPEs can use adaptive modulation and forward error correction (FEC) schemes to communicate. Adaptive modulation, or adaptable modulation density, includes varying the bit per symbol rate modulation scheme, or modulation robustness, of downlinks and uplinks transmitted between CPEs and the base station. Examples of such modulation schemes include quadrature amplitude modulation-4 (QAM-4), QAM-16, QAM-64, and QAM-256. If QAM-4 is used, each resulting symbol represents two bits. If QAM-64 is used, each resulting symbol represents six bits. Adaptive FEC includes varying the amount of error correction data that is transmitted in the downlink and/or uplink. Channel characteristics, for example the modulation and FEC, for the downlink and/or uplink can be varied independently. For ease of explanation, the phrase "PHY mode" is

used to indicate characteristics of a communication channel or link, including for example, modulation scheme and/or an FEC.

The PHY mode(s) planned for use in the sector **106** is normally determined as a function of the geographical relationship between the base station **102** and the CPEs, the rain region, and the implementation or modem complexity of the CPEs. Examples of rain regions include rain regions A-Q. Recommendations for modeling the rain region's effect on signal propagation can be found in Rec. ITU-R PN.837.1. Thus, a planned PHY mode may be different for the CPEs depending on the capabilities and transmission quality of each CPE **104** and base station **102** pair. For ease of explanation, the phrase "planned PHY mode" is used to indicate the planned PHY mode for a CPE **104** and base station **102** pair as described above.

Better environmental conditions, e.g., less distance, between some CPEs (such as CPE **104(c)** for example) and the base station **102** may permit the use of a less robust PHY mode by such CPEs as compared to a PHY mode used by CPEs located farther from the base station. For example, if CPE **104(c)** is capable of receiving QAM-64 data coupled with achieving adequate transmission quality between CPE **104(c)** and the base station **102**, all data transmitted between the CPE and the base station can be modulated using QAM-64. In the same system CPEs **104(a)**, **104(b)**, which, for example, are only capable of receiving QAM-4 data, will only transmit and receive QAM-4 data. By using different or variable PHY modes for different CPEs associated with a single base station, the communication system **100** as a whole increases its bandwidth utilization.

The transmission quality between the base station **102** and a CPE **104** may not only vary between each CPE and base station pair as described above, but may also vary over time, or between the uplink and downlink transmissions of a single pair (i.e. asymmetrical transmissions). For example, in FIG. 1, the transmission quality may significantly decrease during a rain or snow storm. When the link quality is decreased, there is an increased chance that transmitted data along communication links **110(a)**, **110(b)**, **110(c)**, **112(a)**, **112(b)**, **112(c)** may be unrecognizable or lost to the receiving base station or CPE. To accommodate these time variations in link quality, the communication system **100** can dynamically adjust or "adapt" the PHY mode for each base station **102** and CPE **104**. In such an adaptive system, the bandwidth utilization of the communication system **100** further increases.

FIG. 2 represents a time division duplexing ("TDD") frame and multi-frame structure for use in communication system **100**. Frame **300** includes a downlink subframe **302** and an uplink subframe **304**. The downlink subframe **302** is used by the base station **102** to transmit information to the CPEs **104(a)-(c)**. In any given downlink subframe **302**, all, some, or none of the transmitted information is intended for a specific CPE **104**. The base station **102** may transmit the downlink subframe **302** prior to receiving the uplink subframe **304**. The uplink subframe **304** is used by the CPEs **104(a)-(c)** to transmit information to the base station **102**.

Subframes **302**, **304** are subdivided into a plurality of physical layer slots (PS) **306**. Each PS **306** correlates with a duration of time. In FIG. 2, each subframe **302**, **304** can be one-half millisecond in duration and include 400 PS for a total of 800 PS per frame **300**. Alternatively, subframes having longer or shorter durations and with more or fewer PSs can be used. Additionally, the size of the subframes can be asymmetrical and can be varied over time.

Each downlink subframe **302** can include a frame control header **308** and downlink data **310**. The frame control header

308 includes information for the CPEs to synchronize with the base station **102**. The frame control header **308** can include control information indicating where a PHY mode change occurs in the downlink. The frame control header **308** can also include a map of a subsequent uplink subframe **304**. This map allocates the PSs **306** in the uplink subframe **304** between the different CPEs. The frame control header **308** can further include a map of attributes of the downlink data **310**. For example, attributes may include, but are not limited to, the locations of the PSs **306** in the subframe **302** that are intended for each individual CPE.

The downlink data **310** is transmitted using a pre-defined PHY mode or a sequence of PHY modes with three PHY modes A, B, and C depicted in FIG. 2 as an example. Individual or groups of PSs **306** in the downlink subframe **302** are assigned to data intended for specific CPEs **104**. For example, the base station **102** could assign PSs in one, some, or all of the PHY modes A, B, and C for transmitting data to CPE **104(a)**. In FIG. 2, the data is divided into three PHY modes, where PHY mode A (**312(a)**) is the most robust modulation (i.e. least prone to transmission errors caused by signal interference) and while PHY mode C (**312(c)**) is the least robust (i.e. most prone to transmission errors caused by signal interference). In between these PHY modes is PHY mode B (**312(b)**). Additional PHY modes can also be used.

Still referring to FIG. 2, the uplink subframe **304** comprises uplink data **314(a)-(n)**. The uplink subframe **304** is used by the CPEs **104(a)-(c)** to transmit information to the base station **102**. The subframe **304** is subdivided into a plurality of PSs **306**. Each CPE **104(a)-(c)** transmits its information during its allocated PS **306** or range of PSs **306**. The PSs **306** allocated for each CPE can be grouped into a contiguous block of a plurality of data blocks **314(a)-(n)**. The CPEs use data blocks **314(a)-(n)** to transmit the uplink subframe **304**. The range of PSs **306** allocated to each block in the plurality of data blocks **314(a)-(n)** can be selected by the base station **102**. The data transmitted in each data block **314(a)-(n)** is modulated by the transmitting CPE. For example, CPE **104(a)** modulates and transmits uplink data block **314(a)**. The same or different PHY modes can be used for each data block **314(a)-(n)**. The data blocks **314(a)-(n)** can also be grouped by PHY mode.

During its data block, the CPE transmits with a PHY mode that is selected based on measured channel parameters from its prior transmission(s). Similarly, the base station can select a downlink PHY mode for a communication link based on measured channel parameters from its prior transmission(s). The process for selecting a PHY mode will be explained in more detail below. The measured channel parameters can be included in the uplink subframe **304** for transmission by the CPEs to the base station or can be included in the downlink subframe **302** for transmission by the base station to the CPE. Once received, the base station or CPE can utilize the channel parameters to determine if the PHY mode of the downlink subframe **302** or the uplink subframe **304** should be changed.

Each CPE **104** can receive all downlink transmissions that are modulated using its current PHY mode or are modulated using a more robust PHY mode than its current PHY mode. The frame control header **308** is typically modulated using the most robust PHY mode to ensure that all CPEs **104(a)-(c)** may receive it. Because each CPE receives the frame control header, each CPE **104** is initially synchronized with the downlink subframe **302** at the beginning of the frame **300**. The downlink subframe can be sorted by robustness, which allows each CPE to maintain synchronization during the subsequent portion of the downlink that could include data for that CPE.

FIG. 3 is a block diagram of a modem 108 which can be used to modulate/demodulate data in the wireless communication system 100 described above. The modem 108 is used to control the number and quality of existing and new connections between the CPEs and base station. Modems 108 are used by the base station 102 and CPEs 104 to modulate and demodulate data. For ease of description, the modem 108 will now be described with reference to the base station 102.

The modem 108 can include a control section 108(a) and a modem section 108(b). The modem section 108(b) includes a receiver module 202 and a transmitter module 204. The control section 108(a) includes a call admission control (CAC) module 206, a Receive Signal Quality (RSQ) module 208, a precedence module 210, and a control module 212. Alternatively, the functionality provided for by the control section 108(a) can be separate from the modem 108. Further, the control section 108(a) components and modules may be combined into fewer components and modules or further separated into additional components and modules within the base station 102 and/or CPE 104.

At a base station 102, the transmitter module 204 converts digital data to an appropriately modulated analog signal communicated as a downlink 110, using for example, QAM modulation and FEC. The analog signal may also be up converted to a carrier frequency prior to transmission. The receiver module 202 at the base station 102 demodulates an uplink 112(a), 112(b), 112(c) and converts it back to digital form. When configured as a CPE 104(a), the transmitter module 204 converts digital data to an appropriately modulated analog signal communicated as an uplink 112, using for example, QAM modulation and FEC. The analog signal may also be up converted to a carrier frequency prior to transmission. The receiver module 202 at the CPE 104 demodulates a downlink 110 and converts it back to digital form.

The wireless communication system 100 can provide "bandwidth-on-demand" to the CPEs. Thus, the uplink can include bandwidth requests for new and existing connections from end users. The CPEs request bandwidth allocations from their respective base station 102 based upon the type and quality of service requested by the end users served by the CPE. A CPE or base station can continue an existing connection or allow a new connection depending on, for example, a user's defined quality of service, bandwidth needs, and transmission quality. Thus, each end user potentially uses a different broadband service having different bandwidth and latency requirements. Moreover, each user can select a portion(s) of their bandwidth to have variable priority levels, or precedence.

To this end, the type and quality of service available to the end users are variable and selectable. The amount of bandwidth dedicated to a given service can be determined by the information rate and the quality of service required by that service (and also taking into account bandwidth availability and other system parameters as will be described below). For example, T1-type continuous data services typically require a great deal of bandwidth having well controlled delivery latency. Until terminated, these services require constant bandwidth allocation for each downlink subframe 302 and uplink subframe 304 in a frame 300 (see FIG. 2). In contrast, certain types of data services such as Internet Protocol data services ("TCP/IP") are bursty, often idle (which at any one instant may require zero bandwidth), and are relatively insensitive to delay variations when active.

Referring again to FIG. 3, the Receive Signal Quality (RSQ) module 208 interfaces with the receiver module 202 and the control module 212. The RSQ module 208 is configured to monitor signal quality of the received uplink signal. In

a communication system that adapts PHY modes, the selection of a PHY mode can be based on channel parameters monitored/measured by the RSQ module 208. These channel parameters can include the signal to noise ratio (SNR) of the modulated data at the receiver module 202 at the base station 102. A bit error rate (BER), at the base station 102 or CPE 104, can also be used in selecting the PHY mode. For example, when the received signal drops below a threshold value for a SNR, a more robust PHY mode can be selected by the modem 108 for the connection. Signal quality can be measured over a period of time by the RSQ module 208, and, in response to changes in the signal quality, the control module 212 determines if the PHY mode for the transmitting CPE should be changed. The control module 212 at the base station 102 interfaces with the transmitter module 204 to control the PHY mode for the modem 108. Further, the control module 212, via the transmitter module 204, can alert the transmitting CPE to change its PHY mode. Measuring signal quality over time helps avoid cyclic changes in the PHY mode due to transient changes in the communication link's quality.

The RSQ module at the CPE can measure signal quality for a signal that is transmitted by the base station 102 and received by the CPE. The CPE can alert the base station to change the base station's transmitting PHY mode. In one embodiment, only the modem 108 at the base station 102 includes the control module 212. In this embodiment, each CPE measures its own signal quality and transmits its value within its uplink 112 to the base station 102. The control module 212 is then able to monitor the signal quality of the signal received by the CPEs to determine if the downlink 110 PHY modes should be changed.

The call admission control (CAC) module 206 determines what CPE to base station connections are allowed at any given time. For example, the receiver module 202 can receive a request for a new connection between the CPE and base station in the uplink 112. The CAC module determines whether to grant that request. This determination can be based on intrinsic factors relating to the new connection as well as communication system level factors. Examples of intrinsic factors are a quality of service and a type of service requested by the end user for the new connection. The extrinsic factors are external to the new connection. The extrinsic factors can include the type and quality of service for the existing connections, whether available bandwidth is allocated to the requesting CPE, the available bandwidth in the communication link, and the portion of the frame that is allocated for the uplink and downlink. An example of a type and quality of service that can be evaluated by the CAC module 206 are hard bandwidth commitments.

The CAC module 206 can be configured to determine whether there will be enough bandwidth to support all of the connections between the CPEs 104 and the base station 102. For example, the CAC module 206 can determine whether there will be enough bandwidth for hard bandwidth commitments between the base station and CPEs. These hard bandwidth commitments can include, for example, constant bit rate (CBR) connections, the minimum cell rate (MCR) portion of a guaranteed frame rate (GFR) connections, and some function of sustainable cell rate (SCR) for variable bit rate (VBR) and variable bit rate real-time (VBR-rt) connections. Alternatively, hard bandwidth commitments could be the bandwidth measured, rather than calculated, that is necessary to provide the quality of service (QoS) desired for the connection. For ease of explanation, the following description uses hard bandwidth commitments as an exemplary type of connection. However, the systems and methods disclosed herein are not so limited and can be applied to any type of

connection. Further, the systems and methods can be applied to one or more types of connections.

The CAC module 206 determines whether there is enough bandwidth to allow the new connection. This can be determined by summing the hard bandwidth commitments for each connection on each CPE 104(a), 104(b), 104(c) (see FIG. 1). Thus, each CPE will have a hard bandwidth commitment for its existing connections. All of the hard bandwidth commitments from the CPEs can then be summed to get the total hard bandwidth commitments for all of the existing connections through base station 102. The control module 212 can perform these calculations. The CAC module 206 compares the total hard bandwidth commitments to an air link line rate. The air link line rate is the amount of bandwidth available between the CPEs and base station. If the air link line rate exceeds the total hard bandwidth commitments, the new connection is allowed. If the total hard bandwidth commitments meet or exceed the air link line rate, the CAC module 206 denies the new connection.

In the communication system described above, each connection between the CPE 104 and base station 102 will have a planned PHY mode. The planned PHY mode is used by the CAC module 206 in determining whether to allow the new connection. As will be explained below, the calculation of the total hard bandwidth commitments for any given sector 106 (see FIG. 1) presents additional difficulties for communication systems 100 which adapt PHY modes.

In communication systems 100 that adapt, or vary, their PHY modes, the available bandwidth necessary for existing connections can vary. Since each PHY mode used by the base station 102 and/or CPE 104 for its communication link 110 (a)-(c), 112(a)-(c) is adaptive, the robustness of each communication link can vary (see FIG. 1). As the robustness varies, the bandwidth allocated for an existing connection or new connection will also vary.

In such communication systems, connections are allowed to be modulated with PHY modes that are more or less robust than the planned PHY mode. Each end user connection can dynamically select its current PHY mode. This current PHY mode can be different than the planned PHY mode that was planned for the connection. If a connection is modulated using a more robust PHY mode than the planned PHY mode, the connection will exceed its allocated bandwidth.

In an embodiment of a communication system 100 that adapts PHY modes, the CAC module 206 allows new connections with reference to a minimum air link line rate. The minimum air link line rate is a measure of bandwidth that would be required if all of the existing connections between the CPEs and base station were modulated using a least efficient PHY mode regardless of whether the least efficient PHY mode is actually used. The least efficient PHY mode can include, for example, QAM-4 modulation with a maximum amount of FEC overhead bits. This method ensures that during adverse weather conditions each CPE will be able to select its least efficient PHY mode and transmit its data within its assigned bandwidth without losing its connection with the base station. In this embodiment, the CAC module 206 will deny a new connection if the new connection will cause the CPE to exceed its minimum air link line rate. The CAC module 206 can determine whether to allow or deny a new connection in conjunction with the control module 212. During spells of good weather, the CPE can select a less robust PHY mode for its current PHY mode. By selecting a less robust PHY mode, additional bandwidth between the CPE and base station would be freed up. However, the communication system 100 is constrained from taking advantage of the

freed up bandwidth when the decision to allow new connections is based upon the minimum air link line rate.

In another embodiment of the communication system 100 that adapts PHY modes, the CAC module 206 allows the CPE to take advantage of the freed up bandwidth. The CAC module 206 limits new connections based on a comparison of the bandwidth required for the connection if it is modulated using the CPE's planned PHY mode with the available bandwidth. The available bandwidth is determined by summing the CPE's hard bandwidth commitments that would be used by the existing connections if those connections were modulated using the planned PHY mode of the CPE. If the available bandwidth is equal to or exceeds the bandwidth required for the new connection, the CAC module 206 will allow the connection. However, if the CPE operates using a less robust PHY mode than its preferred PHY mode, there is the potential that data through the CPE will be lost.

In the presence of adaptive PHY modes and to take advantage of the CPE's planned PHY mode, the bit rate associated with each connection's PHY mode is compared. Connections at different PHY modes (modulation and FEC) effectively have different bit rates, or air link line rates, and thus are not directly compared. One method for comparing these bit rates is to normalize the PHY modes associated with each connection.

Equation 1, below, can be used to normalize the bandwidth used for connections through an individual CPE.

$$W_{CPEi} = \sum_{i=1}^n ER * \text{mod} \quad \text{Equation 1}$$

Where W_{CPEi} is a normalized value or weight for the entire bandwidth used by an individual CPE. W_{CPEi} is proportional to the equivalent bandwidth of its connections and the current modulation associated with each connection. Er is the number of bits per unit time that are transmitted by the CPE for a connection. Each connection is modulated using an associated PHY mode. The term mod is the inverse of the associated PHY mode efficiency that is used to modulate the connection. The bit/symbol rate for QAM-64 is 6, for QAM-16 is 4, and for QAM-4 is 2. For example, if during a first connection between CPE 104(a) and the base station 102, 10,000 bits/s were transmitted using QAM-4, and during a second connection between CPE 104(a) and the base station, 18,000 bits/s were transmitted using QAM-64, Equation 1 would be:

$$W_{CPE104(a)} = (10,000 \text{ bits/s} * 1/2 \text{ symbol/bit}) + (18,000 \text{ bits/s} * 1/6 \text{ symbol/bit}) = 8,000 \text{ bits/s}.$$

The 8,000 bits/s for CPE 104(a) is then added to $W_{CPE104(b)}$ and $W_{CPE104(c)}$ to determine a total normalized bandwidth for the CPEs in sector 106.

Normalization is used to determine the effective hard bandwidth commitment usage through the modem 108. The CAC module 206 interfaces with the control module 212 to compare the different PHY modes for the existing connections and the new connection with the available bandwidth between the base station 102 and CPEs 104. In this embodiment, the control module 212 is configured to normalize each CPE's air link line rate. Once the control module 212 has determined the normalized value for each CPE's committed bandwidth requirements, the CAC module 206 can sum and compare them against a common air link line rate.

Equation 2, below, can be used by the CAC module 206 to determine the total bandwidth used, i.e. $W_{Link} - W$, by all of the CPEs in the sector.

$$W_{Link} = \sum_{i=1}^n W_{CPEi}$$

Equation 2

Where W_{CPEi} is a normalized value or weight for the entire bandwidth used by an individual CPE in the sector.

For example, with PHY modes of QAM-4, QAM-16, and QAM-64, each using the same FEC, QAM-4 requires 3 times the air link resources, or bandwidth, of QAM-64 and QAM-16 requires 1.5 times the air link resources of QAM-64. In this example, the control module 212 can normalize to QAM-64. Thus, CPEs operating at QAM-64 would have their hard bandwidth commitments multiplied by a weight of 1, CPE's operating at QAM-16 would have their hard bandwidth commitments multiplied by a weight of 1.5, and CPE's operating at QAM-4 would have their hard bandwidth commitments multiplied by a weight of 3. The CAC module 206 then sums these hard bandwidth commitments and compares the total against a line rate of a communication link operating entirely at the selected normalized PHY mode, QAM-64 with the single FEC. Alternatively, the control module 212 normalizes to QAM-4 by applying weights of $\frac{1}{3}$ to QAM-64, $\frac{1}{2}$ to QAM-16, and 1 to QAM-4. The selection of QAM-64 and QAM-4, each with a single FEC, for use as a normalization PHY mode are only examples. Any PHY mode could be used to define the air link line rate for normalizing the connections between the CPEs and base station.

Still referring to FIG. 3, the precedence module 210 will now be described. The precedence module 210 interfaces with the receiver module 202 and the control module 212 to apply a priority, or precedence, to one or more connections when less bandwidth is available than required to meet the hard bandwidth commitments. This can occur when the CAC module 206 is configured as described above to limit new connections based on planned PHY modes of the CPEs but some or all of the CPEs are operating at a more robust (less efficient) current PHY mode. The precedence module 210 determines which connection(s) are to be suspended. However, before connections are suspended, the base station 102 can re-allocate bandwidth, that is not intended for hard bandwidth commitments, among the CPEs to increase the available bandwidth for hard bandwidth commitments. Alternatively or in addition to, in TDD systems, the base station 102 can adjust the portion of a downlink subframe 302 and of an uplink subframe 304 in the frame 300 (see FIG. 2) to increase the available bandwidth for a CPE that requires additional bandwidth due to a change in the current PHY mode or the addition of a connection. However, if additional bandwidth is not available, the precedence module 210 selects which connections from among the CPEs are suspended.

Bandwidth problems can arise when one or more CPEs are using more robust PHY modes than their planned PHY modes for their connections. For example, if communication system 100 was designed for 99.99% availability, a comparison would be made between a CPE's geographical proximity to the base station and the communication system's rain region. Based on this comparison, a planned PHY mode is selected for that CPE that allows it to operate at that planned PHY mode or a less robust PHY mode the entire year except for approximately 53 minutes. If a CPE exceeds a SNR or BER threshold and transmits its uplink using a more robust PHY mode than its planned PHY mode, it will require additional bandwidth for these 53 minutes. At least two things can occur during this 53 minutes depending on whether additional air link resources in the communication system 100 are avail-

able. Should additional bandwidth be needed when only a few existing connections, between the base station 102 and CPEs 104 in sector 106, select a more robust PHY mode, the base station 102 may be able to reallocate the available bandwidth.

Thus, if the communication system is sufficiently under subscribed, the CPE 104 can use the additional air link resources it requires when using a more robust PHY mode than its planned PHY mode during the 53 minutes. If many existing connections between the base station and CPEs are subject to similar adverse environmental conditions, the base station 102 may be unable to accommodate the CPEs' bandwidth requests. When the air link resources aren't available, the precedence module 210 selects which of the existing connections from the CPEs 104 (a)-(c) to suspend.

The precedence module 210 interfaces with the control module 212 to compare the bit rates for the existing connections through each CPE based on each CPE's current PHY mode. While the CAC module 206 compares the planned PHY modes of the CPEs to determine whether a new connection is allowed, the precedence module 210 compares the current PHY modes to the selected reference air link line rate to determine if a suspension should occur. The control module 212 is configured to compare the current PHY modes of the CPEs. As explained above, one method for comparing the PHY modes is normalization. Once normalized, the precedence module 210 determines if additional bandwidth between the CPEs and base station is available. If additional bandwidth is available, the precedence module 210 can determine a margin value. If additional bandwidth is not available, the precedence module 210 selects which connections are going to be suspended.

The precedence module 210 can be configured to suspend enough connections through the CPE that is requesting additional bandwidth until there is enough bandwidth to meet the remaining demand. The amount of outage during the year for the connections through the affected CPE 104 is planned based on the availability and rain region as discussed above. CPEs 104 located at greater distances from the base station 102 or having limited visibility of the base station would more likely be subject to the application of precedence. In this embodiment, CPE's are penalized by their geographic proximity to the base station 102. For example, the same CPEs, those that are barely able to meet their availability numbers at their planned PHY modes, would be the first to have their hard bandwidth connections with the base station 102 suspended. These CPEs may receive the full brunt of the planned 53 minutes per year outage. In contrast, other CPEs (in particular, those barely unable to meet the availability number at the next less robust PHY mode) would have plenty of bandwidth because connections through the geographically challenged CPE's would be suspended before they need to drop to a more robust PHY mode and request additional bandwidth.

Alternatively, the precedence module 210 can also randomly select connections for suspension or select them in a round robin fashion. The precedence module 210 chooses connection to suspend from the entire set of connections that have hard bandwidth commitments through the CPEs in the sector 106. The CPEs subject to potential suspension include CPEs that may still be operating at their planned PHY mode. In this embodiment, the communication system 100 as a whole, and each individual connection still meets its availability numbers since the planned outage is evenly shared. For example, if a rain fade caused the base station 102 and CPEs to lose half of their bandwidth, each connection from among all of the CPEs would, on average, see only 26 minutes outage per year rather than 53 minutes. Thus, the precedence aspect of adaptive CAC can allow you to increase system availability

(26 minutes outage vs 53 minutes outage) or capacity. For example, operating a CPE **104** at a less robust PHY mode than would typically be planned for the CPE increases the system's capacity. The communication system can rely on adaptive CAC coupled with precedence to distribute the outage among all of the CPEs. This achieves the planned 53 minutes outage, but with increased modulation efficiency for the CPE operating at the less robust PHY mode.

Further, the precedence module **210** can use levels in conjunction with the random selection method discussed above when selecting which connections to suspend. In this embodiment, each connection between the CPEs **104(a)-(c)** and base station **102** is assigned a precedence level. Alternatively, each CPE is assigned a precedence level for its connections. For example, there are five levels, one through five, with precedence level one being assigned to the most important connections and precedence level five being assigned to the least important connections. The random selection of connections for suspension is applied as discussed above with reference to the second embodiment. However, instead of applying the method of the second embodiment to all connections simultaneously, the precedence module **210** applies it based on each connection's assigned precedence level. Continuing with the example above, the random selection would be initially applied to connections assigned to precedence level five. If and when the precedence level five connections are exhausted, the precedence module **210** applies the random selection process to connections assigned to precedence level four and so on until there is adequate bandwidth available for the remaining connections that have hard bandwidth commitments. Thus, individual connections can be selected to have their uplink or downlink transmissions suspended in favor of other connections.

Further, the precedence module **210** can allow connections to continue to operate with their current PHY mode even when a first SNR or BER threshold is exceeded. Instead, a second threshold is implemented to maintain the connection at the same PHY mode. However, the error rate associated with the connection may increase.

FIG. **4** is a flowchart illustrating the process of adaptively adjusting a PHY mode for a connection between the base station **102** and a CPE. This process can be implemented by a modem **108** at a base station. Alternatively, this process is performed by a modem **108** at the CPE. A specific CPE **104** can change its uplink PHY mode independent of that CPE's downlink PHY mode. The specific CPE's PHY mode can also be independent of the uplink PHY modes used by other CPEs **104** within the same sector **106**. Because the base station **102** must synchronize with each individual CPE **104** that uplinks data, the uplink quality may be different than the downlink quality with a specific CPE **104**. The base station **102** can perform the process of adaptively adjusting the uplink PHY mode used by a specific CPE **104**. As such, a similar process may be completed for each CPE **104** within the sector **106** in order to adaptively adjust each CPEs **104** uplink modulation.

The following description describes a process for adaptively adjusting a PHY mode for an uplink from a CPE to a base station. The same process is used for adaptively adjusting a PHY mode for a downlink from the base station to the CPE.

In particular, flow begins in start block **400**. Flow moves to a block **402** where a receiver module **202** at a base station **102** receives an uplink from a CPE **104**. Flow proceeds to block **404**, where the quality of the channel parameters for the uplink **112** is determined by a receive signal quality (RSQ) module **208**. The quality may be a function of the state of the transmission medium (e.g. air, foggy air, wet air, smoky air,

etc.) and the ability of both the transmitting and receiving components (e.g. CPE **104** and base station **102**) to respectively transmit and receive data. The base station **102** can determine the quality of each uplink **112(a)-(c)**. Alternatively, the base station **102** periodically transmits channel parameter measurements, which are indicative of the quality of a CPE's uplink **112**, to that CPE **104**. The CPE **104** then uses these channel parameter measurements to determine the quality of its uplink. These channel parameter measurements can include a SNR and/or a BER measurement of the uplink **112(a)-(c)**. For example, base station **102** can determine the quality of uplink **112(c)** based on a measurement by its RSQ module **208** (see FIG. **3**). A single SNR measurement or a series of several SNR measurements taken during a frame **300** (see FIG. **2**) or during multiple frames may be used to determine the uplink quality. The control module **212** can analyze multiple measurements to determine an uplink's quality.

Continuing to block **406**, the base station **102** or CPE **104** compares the calculated uplink quality with a current PHY mode threshold. The current PHY mode threshold can include an upper threshold and a lower threshold at which the PHY mode is changed. For example, if CPE **104(a)** is currently uplinking data to base station **102** using PHY mode B, the PHY mode will change when the uplink quality exceeds an upper threshold or goes below a lower threshold.

Next at decision block **408**, the CPE determines whether the uplink quality has decreased and crossed a PHY mode lower threshold according to the comparison made in block **406**. Continuing with the example above, if the PHY mode lower threshold associated with PHY mode B has not been crossed, flow proceeds to decision block **410** where the system determines whether the uplink quality has crossed an upper PHY mode threshold associated with PHY mode B. If the current modulation upper threshold has been exceeded, flow continues to block **412** where the PHY mode is changed to a less robust, denser modulation. For example, PHY mode C is selected for CPE **104(a)**. The base station **102** can send a request to the CPE **104** indicating a desired uplink PHY mode change. Alternatively, the base station **102** transmits an uplink map to all CPEs **104** in the downlink subframe **302** (see FIG. **2**) indicating which CPEs have been allotted uplink PS's and the PS's associated PHY modes. The base station **102** indicates to an individual CPE **104** that the PHY mode has been changed by allotting uplink subframe **304** PSs to that CPE that use a less robust PHY mode. For example, if the uplink PHY mode for CPE **104(a)** is to be changed from PHY mode B to PHY mode C, the base station **102** assigns uplink subframe PS's which are to be modulated using PHY mode C. This uplink assignment serves as an indicator to the CPE that its uplink PHY mode has been change. Flow continues to a block **413** where the system can reallocate the newly available bandwidth. For example, the newly available bandwidth can be allocated for new or existing hard bandwidth commitments, new connections, or connections that had been previously suspended. Flow then returns to block **402** as described above.

Returning to decision block **410**, if the current PHY mode upper threshold has not been exceeded, flow continues to block **402** as described above.

Returning to decision block **408**, if the PHY mode lower threshold has been crossed, flow proceeds to a decision block **414** where the system determines whether the connections, between the CPE and base station that have a hard bandwidth commitment, are using a less robust PHY mode than the planned PHY mode for the connections. If the connection(s) is using a less robust PHY mode than its planned PHY mode, the process proceeds to block **416** where a more robust PHY

15

mode is selected for the connection(s). If the base station determines whether the uplink quality has crossed a threshold, the base station **102** can send a request to the CPE **104** indicating a desired uplink PHY mode change. Alternatively, the base station **102** can transmit an uplink map to all CPEs **104** in the downlink subframe **302** indicating which CPEs have been allotted uplink PS's along with the PS's associated PHY modes. This allows the base station **102** to indicate to an individual CPE **104** that the PHY mode has been changed by allotting uplink subframe **304** PSs to that CPE that uses a more robust PHY mode. For example, if the uplink PHY mode for CPE **104(a)** is to be changed from PHY mode B to PHY mode A, the base station **102** assigns uplink subframe PS's which are to be modulated using PHY mode A. This uplink assignment serves as an indicator to CPE **104(a)** that its uplink PHY mode has been changed. Flow then continues to block **420** where a precedence module **210** (see FIG. 3) determines whether connections between the base station and the CPEs are to be suspended. Precedence will be explained with reference to FIG. 5. Flow then continues to block **402** as described above.

Returning to decision block **414**, if the connection's current PHY mode is at least as robust as its planned PHY mode, the process continues to decision block **418** where the control module **212** can replace the lower threshold associated with the current PHY mode of the connection that has the hard bandwidth commitment with a second lower threshold. The process continues to block **402** as described above except that at block **406** the RSQ module **208** and the control module **212** use the second lower threshold to compare with the measured signal quality of the connection.

Returning to decision block **418**, if the control module does not select the second lower threshold, the process moves to a block **420**, as described above, where the precedence module **210** (see FIG. 3) determines whether connections between the base station and the CPEs are to be suspended. Precedence will be explained with reference to FIG. 5. Once precedence has been applied, the process returns to state **402** as described above.

FIG. 5 is a flowchart illustrating the process of applying precedence to existing connections between the CPEs **104** and the base station that have hard bandwidth commitments. This process can be implemented by a modem **108** at a base station. Alternatively, this process is performed by a modem **108** at the CPE. Flow begins in start block **600**. Flow moves to block **601** where a more robust PHY mode is selected for the existing connection. Flow proceeds to block **602** where the control module **212** determines an air link line rate based on a reference PHY mode. Flow moves to block **603** where the control module calculates the hard bandwidth commitments for the existing connections between the base station **102** and CPEs **104** based on the current PHY mode for each connection. Flow moves to a decision block **604** where the precedence module **210** determines whether the air link line rate determined at block **602** exceeds the hard bandwidth commitments between the CPEs and base station. If the air link line rate exceeds the hard bandwidth commitments, the process continues to a block **606** where the more robust PHY mode selected in block **601** is applied for the existing connection. Flow then returns to block **402** of FIG. 4 where the base station **102** receives the next uplink from a CPE **104**.

Returning to decision block **604**, if the air link line rate does not exceed the hard bandwidth commitments, flow proceeds to a decision block **608** where the precedence module **210** determines whether additional air link resources are available. These additional air link resources can include available bandwidth in the uplink subframe **302** and available

16

bandwidth in the downlink subframe **304** (see FIG. 2). If additional air link resources are available, flow proceeds to block **606** where the more robust PHY mode is applied for the existing connection. Flow then returns to block **402** of FIG. 4 where the base station **102** receives the next uplink from a CPE **104**.

Returning to decision block **608**, if additional air link resources are not available, flow moves to a block **610** where the precedence module **210** suspends existing connections between the base station **102** and the CPEs **104**. As described above, the precedence module **210** can, for example, suspend connections only between the base station and the affected CPE, randomly suspend connections between the base station and all of the CPEs in a sector **106**, or suspend connections between the base station and all of the CPEs in the sector in a round-robin fashion. Further, the precedence module **210** can randomly suspend connections between the base station and the CPEs that have a lower precedence priority than other connections. Alternatively, the precedence module **210** can suspend the connections that have a lower precedence priority in a round-robin fashion. The process moves to block **606** as described above where the more robust PHY mode is applied for the existing connection. The process then returns to block **402** of FIG. 4 where the base station **102** receives the next uplink from a CPE **104**.

FIG. 6 is a flowchart illustrating the process of call admission control for a new connection between a CPE and the base station. This process can be implemented at a base station. Alternatively, this process is performed at the CPE. Flow begins in start block **500**. Flow proceeds to block **502** where the base station receiver module receives a request for a new connection. The process continues to block **504** where the CAC module **206** sums the hard bandwidth commitments between the CPEs and base station based on the planned modulations of the CPEs. Next, at a block **506**, the control module **212** determines an air link line rate for the existing connections between the base station and CPEs based on the reference PHY mode. Flow moves to a decision block **508** where the CAC module **206** determines whether the air link line rate determined at block **506** exceeds the hard bandwidth commitments determined at block **504**. If the air link line rate exceeds the hard bandwidth commitments, the process continues to a block **510** where the CAC module **206** allows the new connection. However, air link resources are not initially allocated to the connection since the connection has been allowed based on the planned PHY modes of the CPEs and base station. The CPEs and base station could be operated at a more robust PHY mode than their planned PHY mode.

Flow proceeds to block **512** where the control module **212** determines the hard bandwidth commitments for the existing connections between the base station **102** and CPEs **104** based on the current PHY mode for each connection. Flow moves to a decision block **514** where the precedence module **210** determines whether the air link line rate determined at block **506** exceeds the hard bandwidth commitments between the CPEs and base station determined at block **512**. If the air link line rate exceeds the hard bandwidth commitments, the process continues to a block **516** where the base station allocates air link resources to the new connection. Flow then returns to block **502** where the base station **102** receives a request for a new connection.

Returning to decision block **514**, if the air link line rate does not exceed the hard bandwidth commitments, flow proceeds to a decision block **518** where the precedence module **210** determines whether additional air link resources are available. These additional air link resources can include available bandwidth in the uplink subframe **302** and available

17

bandwidth in the downlink subframe 304 (see FIG. 2). If additional air link resources are available, flow proceeds to block 516 where the base station allocates air link resources to the new connection. Flow then returns to block 502 where the base station 102 receives a request for a new connection.

Returning to decision block 518, if additional air link resources are not available, flow moves to a block 520 where the precedence module 210 suspends existing connections between the base station 102 and the CPEs 104. As described above, the precedence module 210 can, for example, suspend connections only between the base station and the affected CPE, randomly suspend connections between the base station and all of the CPEs in a sector 106, or suspend connections between the base station and all of the CPEs in the sector in a round-robin fashion. Alternatively, the new connection is accepted into a suspended state since the precedence module 210 has already determined which of the other connections are to be suspended. Further, the precedence module 210 can randomly suspend connections between the base station and the CPEs that have a lower precedence priority than other connections. Alternatively, the precedence module 210 can suspend the connections that have a lower precedence priority in a round-robin fashion. The process moves to block 516 where the base station allocates air link resources to the new connection. Flow then returns to block 502 where the base station 102 awaits a request for a new connection.

Returning to decision block 508, if the air link line rate does not exceed the hard bandwidth commitments, flow proceeds to a block 522 where the CAC module 206 denies the new connection. The process then returns to block 502 to await the next request for a new connection.

The foregoing description details certain embodiments of the invention. It will be appreciated, however, that no matter how detailed the foregoing appears in text, the invention can be practiced in many ways. As is also stated above, it should be noted that the use of particular terminology when describing certain features or aspects of the embodiments should not be taken to imply that the terminology is being re-defined herein to be restricted to including any specific characteristics of the features or aspects of the embodiment with which that terminology is associated. The scope of the embodiments should therefore be construed in accordance with the appended claims and any equivalents thereof.

What is claimed is:

1. A subscriber station for a wireless communication system comprising:

a modem section configured to receive downlink data from a base station on a downlink link and to transmit uplink data to the base station on an uplink link shared with other subscribers stations;

a receive signal quality module configured to monitor a downlink (DL) quality parameter for the downlink data providing a parameter value; and

a control section configured to:

determine a preferred downlink physical (PHY) mode for the downlink data among a plurality of PHY modes of different degrees of robustness, the preferred downlink PHY mode being defined between a first and a second threshold for the parameter value;

instruct the modem section to transmit to the base station an indication of the preferred downlink PHY mode;

identify in a DL sub-frame map received from the base station, a current downlink PHY mode selected for the subscriber station based on the preferred downlink PHY mode and the bandwidth available to the subscriber station on the downlink link; and

18

instruct the modem section to receive the downlink data based on the current downlink PHY mode,

wherein the downlink PHY mode specifies a modulation format and a forward error correction technique used for transmission of downlink data.

2. A subscriber station as claimed in claim 1, wherein the current downlink PHY mode is different from the preferred downlink PHY mode.

3. A subscriber station as in claim 1, wherein the DL quality parameter is the signal to noise ratio (SNR).

4. A subscriber station as in claim 3, wherein a less robust preferred downlink PHY mode is selected by the subscriber station if the SNR value is above the first and the second threshold.

5. A subscriber station as in claim 1, wherein the DL quality parameter is the bit error rate (BER).

6. A subscriber station as in claim 5, wherein a less robust preferred downlink PHY mode is selected by the subscriber station if the BER value is under the second and the first threshold.

7. A subscriber station as claimed in claim 1, wherein the control section further selects the downlink PHY mode based on the subscriber station capabilities.

8. A subscriber station as claimed in claim 1, wherein the control module is further configured to:

identify in an UL sub-frame map received from the base station, a current uplink PHY mode selected for the subscriber station based on a UL quality parameter for the uplink data and the bandwidth available to the subscriber station on the uplink link; and

instruct the modem section to transmit the uplink data using the uplink PHY mode.

9. A subscriber station as claimed in claim 1, further comprising a precedence module that interfaces with the modem module and the control module to apply a priority to one or more uplink connections established at the subscriber station when less uplink bandwidth is available for the subscriber station on the uplink link than required to serve all uplink connections.

10. A subscriber station as claimed in claim 9, wherein the control module is configured to limit establishment of a new uplink connection based on the uplink bandwidth allocated to the subscriber station and a planned uplink PHY mode.

11. A subscriber station as claimed in claim 10, wherein the control module is configured to suspend an uplink connection based on the bandwidth allocated to the subscriber station and the priority of all uplink connections served by the subscriber station.

12. A method of communication in a wireless communication system, comprising:

receiving at a subscriber station downlink data from a base station on a downlink link and transmitting uplink data to the base station on an uplink link shared with other subscribers stations;

monitoring a quality parameter for the downlink data and providing a parameter value;

determining a preferred downlink physical (PHY) mode for the downlink data among a plurality of PHY modes of different degrees of robustness, the preferred PHY mode being defined between a first and a second threshold for the parameter value;

transmitting to the base station an indication of the preferred PHY mode;

identifying in a DL sub-frame map received from the base station, a current downlink PHY mode selected for the subscriber station based on the preferred downlink PHY

19

mode and the bandwidth available to the subscriber station on the downlink link; and receiving the downlink data having the current downlink PHY mode,

wherein the downlink PHY mode specifies a modulation format and a forward error correction technique used for transmission of downlink data.

13. A method as claimed in claim 12, wherein the quality parameter is the signal to noise ratio (SNR), and wherein a more robust preferred downlink PHY mode is provided by the subscriber station if the SNR value is under the first and the second threshold.

14. A method as claimed in claim 12, wherein the quality parameter is the bit error rate (BER).

15. A method as claimed in claim 14, wherein a more robust preferred downlink PHY mode is selected by the subscriber station if the BER value is above the second and the first threshold.

16. A method of communication in a wireless communication system, comprising:

receiving at a subscriber station downlink data from a base station on a downlink link and transmitting uplink data to the base station on an uplink link shared with other subscribers stations;

monitoring a parameter for the downlink data and providing a parameter value;

transmitting to the base station the parameter value for enabling the base station to establish a current downlink PHY mode for the subscriber station based on a first and a second threshold for the parameter value and the downlink resources available to the subscriber station on the down-link; and

identifying in a DL sub-frame map received from the base station, the current downlink PHY mode; and

receiving the downlink data having the current downlink PHY mode,

wherein the downlink PHY mode specifies a modulation format and a forward error correction technique used for transmission of downlink data.

17. A method as claimed in claim 16, wherein the parameter value is one of a BER value and a SNR value.

18. A method as claimed in claim 16, further comprising establishing a current uplink PHY mode for transmission of uplink data, wherein the uplink PHY mode specifies a modulation format and a forward error correction technique used for transmission of uplink data.

20

19. A method as claimed in claim 18, wherein the current uplink and downlink PHY modes can be adapted independently based on one or more parameters for the uplink and respectively downlink data.

20. A method as claimed in claim 18, wherein the step of establishing a current uplink PHY mode comprises:

receiving from the base station an indication of the quality of the uplink data and determining if the quality of uplink data is between a first and a second thresholds;

selecting a less robust UL PHY mode than the current UL PHY mode if the quality of uplink data increased over the first and second threshold; and

selecting a more robust UL PHY mode than the current UL PHY mode if the quality of uplink data is decreased under the first and second threshold.

21. A method as claimed in claim 18, wherein the step of establishing a current uplink PHY mode further comprises maintaining the current UL PHY mode if the quality of the uplink data between the first and second thresholds.

22. A method as claimed in claim 20, further comprising, when a more robust UL PHY mode is selected:

determining the amount of UL bandwidth available to the subscriber station using a reference PHY mode for the subscriber station;

calculating a hard bandwidth commitment for all UL connections currently established on the CPE, based on the current PHY mode; and

transmitting the uplink data using the more robust PHY mode if the amount of UL bandwidth available to the subscriber station exceeds the hard bandwidth commitment.

23. A method as claimed in claim 22, further comprising, if the amount of UL bandwidth available to the subscriber station is less than the hard bandwidth commitment for the CPE, re-select a less robust uplink PHY mode whenever additional bandwidth is allocated to the subscriber station from the base station; and

suspend a connection established on the subscriber station if additional bandwidth is not available to the subscriber station.

24. A method as claimed in claim 20, further comprising, wherein the bandwidth resulting from using a more robust UL PHY mode is reallocated to other CPEs or connection for UL transmission.

* * * * *