

# **EXHIBIT C**

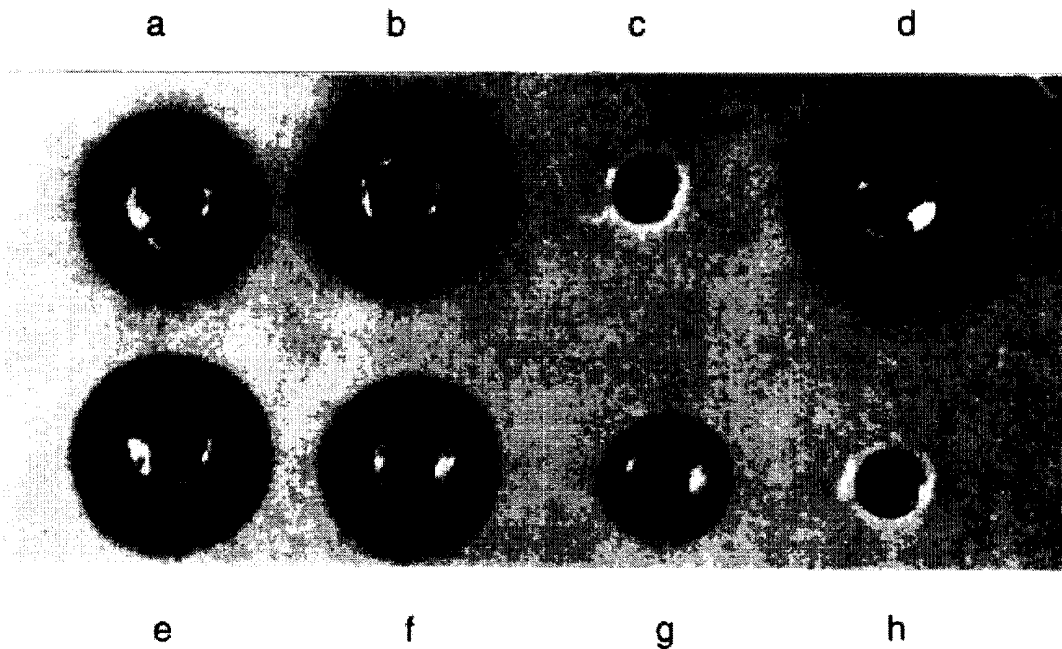
## **Part 2 of 2**

**U.S. Patent**

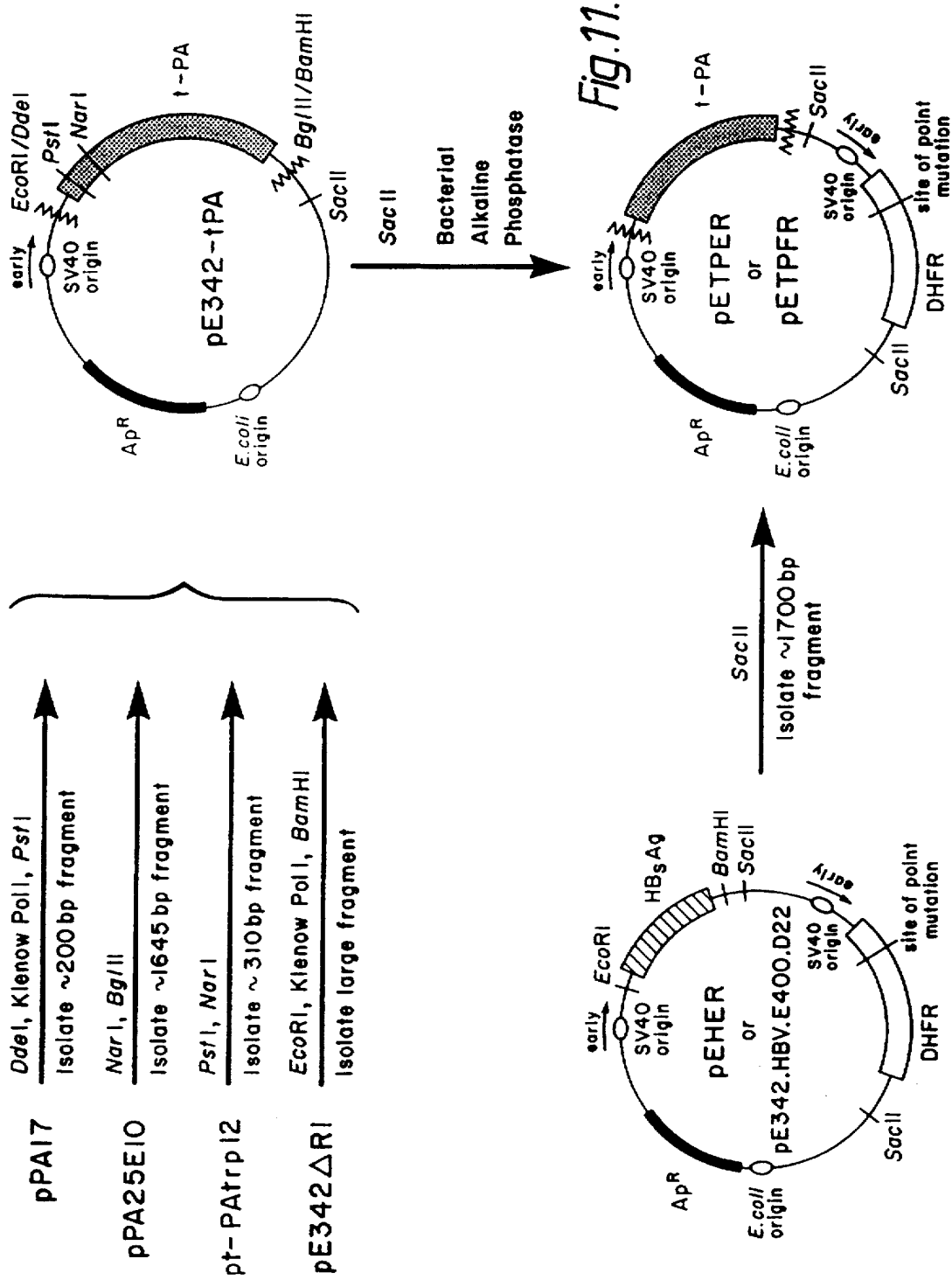
May 19, 1998

Sheet 12 of 14

**5,753,486**



*Fig. 10.*



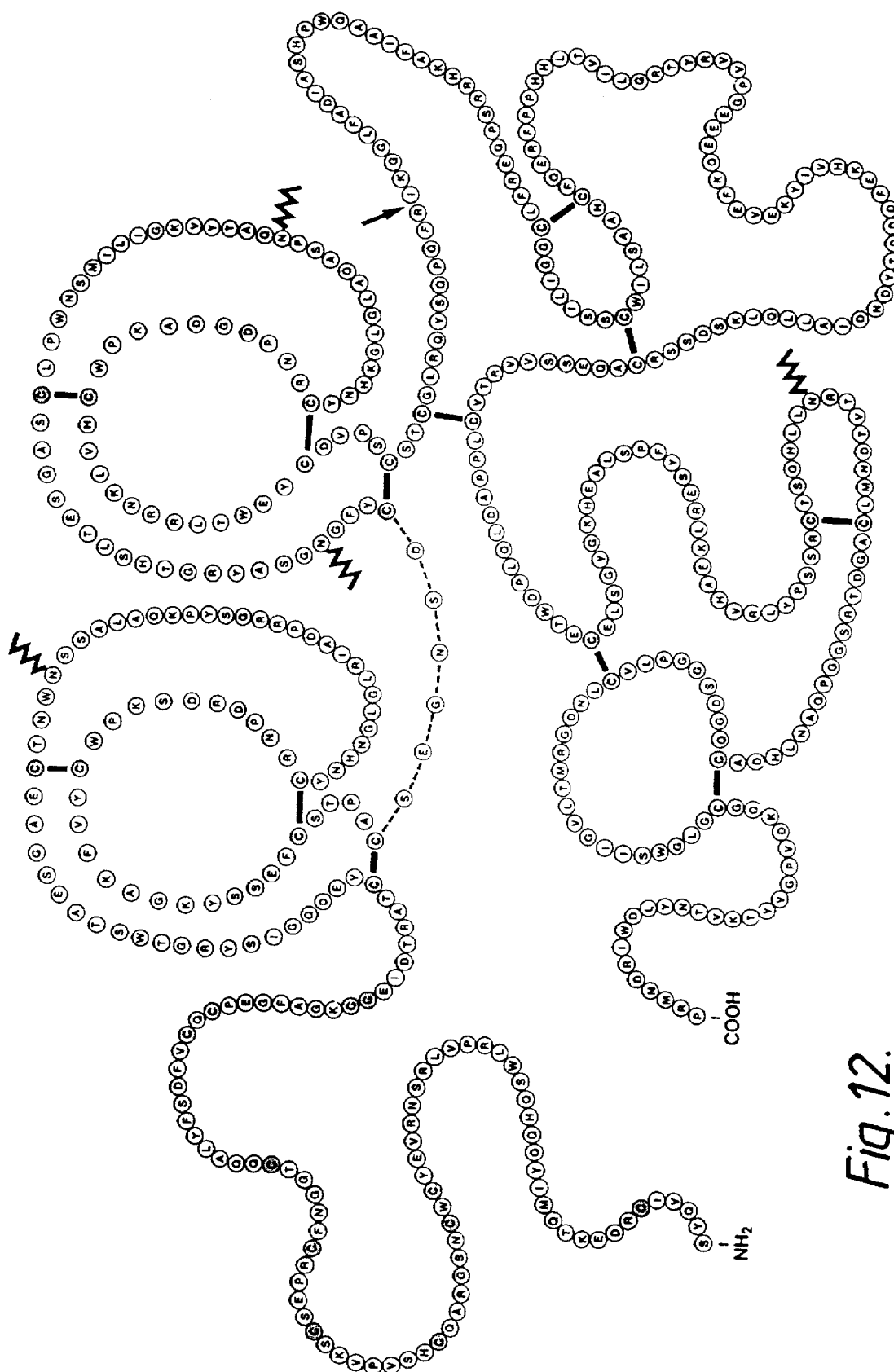


Fig. 12.

5,753,486

1

## HUMAN TISSUE PLASMINOGEN ACTIVATOR

This is a continuation of application Ser. No. 08/264,134 filed 21 Jun. 1994, U.S. Pat. No. 5,587,159, which is a continuation of application Ser. No. 08/109,698 filed 20 Aug. 1993, now abandoned, which is a continuation of application Ser. No. 07/911,021 filed 9 Jul. 1992, abandoned, which is a continuation of application Ser. No. 07/489,855 filed 2 Mar. 1990, now U.S. Pat. No. 5,185,259, which is a continuation of application Ser. No. 07/012,694, filed 9 Feb. 1987, now abandoned, which is a divisional of application Ser. No. 06/483,052 filed 7 Apr. 1983, now U.S. Pat. No. 4,766,075, which is a continuation-in-part of application Ser. No. 06/398,003, filed 14 Jul. 1982, now abandoned, and of application Ser. No. 06/374,860, filed 5 May 1982, now abandoned.

### FIELD OF THE INVENTION

The present invention relates to human plasminogen activator, corresponding to that found in human serum and/or tissues, and to novel forms and compositions thereof and particularly to the means and methods for its production to homogeneity in therapeutically significant quantities.

The present invention arises in part from the discovery of the DNA sequence and deduced amino acid sequence of human plasminogen activator. This discovery enabled the production of human plasminogen activator via the application of recombinant DNA technology, in turn, enabling the production of sufficient quality and quantity of material to initiate and conduct animal and clinical testing as prerequisites to market approval, unimpeded by the restrictions necessarily inherent in the isolation methods hitherto employed involving production and extraction from existing cell culture. This invention is directed to these associated embodiments in all respects.

The publications and other materials hereof used to illuminate the background of the invention, and in particular cases, to provide additional details concerning its practice are incorporated herein by reference, and for convenience, are numerically referenced in the following text and respectively grouped in the appended bibliography.

### BACKGROUND OF THE INVENTION

#### A. Human Tissue Plasminogen Activator

The fibrinolytic system is in a dynamic equilibrium with the coagulation system, maintaining an intact, patent vascular bed. The coagulation system deposits fibrin as a matrix serving to restore a hemostatic condition. The fibrinolytic system removes the fibrin network after the hemostatic condition is achieved. The fibrinolytic process is brought about by the proteolytic enzyme plasmin that is generated from a plasma protein precursor plasminogen. Plasminogen is converted to plasmin through activation by an activator.

Currently, two activators are commercially available, streptokinase and urokinase. Both are indicated for the treatment of acute vascular diseases such as myocardial infarct, stroke, pulmonary embolism, deep vein thrombosis, peripheral arterial occlusion and other venous thromboses. Collectively, these diseases account for major health hazards and risks.

The underlying etiological basis for these diseases points to either a partial, or in severe cases, total occlusion of a blood vessel by a blood clot—thrombus or thromboembolus. Traditional anticoagulant therapy, as with heparin and

2

coumarin, does nothing to directly enhance dissolution of thrombi or thromboemboli. The thrombolytic agents referred to earlier, streptokinase and urokinase, have enjoyed practical and effective use. However, each has severe limitations. Neither has a high affinity for fibrin; consequently, both activate circulating and fibrin-bound plasminogen relatively indiscriminately. The plasmin formed in circulating blood is neutralized rather quickly and lost for useful thrombolysis. Residual plasmin will degrade several clotting factor proteins, for example, fibrinogen, Factor V and Factor VIII, causing a hemorrhagic potential. In addition, streptokinase is strongly antigenic and patients with high antibody titers respond inefficiently to treatment and cannot remain on continuous treatment. Urokinase therapy is expensive, owing to its involved isolation from human urine or tissue culture, and it, therefore, is not generally accepted in clinical practice. Urokinase has been the subject of numerous investigations—See, for example, references 1–6.

So-called plasminogen activators have been isolated from various human tissue, e.g., uterine tissue, blood, serum—see generally references 7–11 and from cell culture (reference 94). Compositions thereof have also been described—see references 12, 13. See also references 14–18. The plasminogen activators derived from these sources have been classified into two major groups: urokinase-type plasminogen activators (u-PA) and tissue-type plasminogen activators (t-PA) based on differences in their immunological properties. (The abbreviations t-PA and u-PA are those proposed at the XXVIII Meeting of the International Committee on Thrombosis and Hemostasis, Bergamo, Italy, 27 Jul. 1982.)

Recently, a human melanoma line has been identified which secretes t-PA. Characterization of this melanoma plasminogen activator has shown it to be indistinguishable both immunologically and in amino acid composition from the plasminogen activator isolated from normal human tissue (Reference 19, 88).

The product was isolated in relatively pure form, characterized and found to be a highly active fibrinolytic agent (20).

Several studies (eg. References 95 to 98) which used t-PA purified from the melanoma cell line have demonstrated its higher affinity for fibrin, compared with urokinase type plasminogen activators. More intensive investigation of human t-PA as a potential thrombolytic agent has, however, been hampered by its extremely low concentration in blood, tissue extracts, vessel perfusates and cell cultures.

It was perceived that the application of recombinant DNA and associated technologies would be a most effective way of providing the requisite large quantities of high quality human tissue-type plasminogen activator (earlier referred to as human plasminogen activator), essentially free of other human protein. Such materials would probably exhibit bioactivity admitting of their use clinically in the treatment of various cardiovascular conditions or diseases.

#### B. Recombinant DNA Technology

Recombinant DNA technology has reached the age of some sophistication. Molecular biologists are able to recombine various DNA sequences with some facility, creating new DNA entities capable of producing copious amounts of exogenous protein product in transformed microbes and cell cultures. The general means and methods are in hand for the in vitro ligation of various blunt ended or "sticky" ended fragments of DNA, producing potent expression vehicles useful in transforming particular organisms, thus directing their efficient synthesis of desired exogenous product.

5,753,486

3

However, on an individual product basis, the pathway remains somewhat tortuous and the science has not advanced to a stage where regular predictions of success can be made. Indeed, those who portend successful results without the underlying experimental basis, do so with considerable risk of inoperability.

DNA recombination of the essential elements, i.e., an origin of replication, one or more phenotypic selection characteristics, an expression promoter, heterologous gene insert and remaining vector, generally is performed outside the host cell. The resulting recombinant replicable expression vehicle, or plasmid, is introduced into cells by transformation and large quantities of the recombinant vehicle obtained by growing the transformant. Where the gene is properly inserted with reference to portions which govern the transcription and translation of the encoded DNA message, the resulting expression vehicle is useful to actually produce the polypeptide sequence for which the inserted gene codes, a process referred to as expression. The resulting product may be obtained by lysing, if necessary, the host cell, in microbial systems, and recovering the product by appropriate purification from other proteins.

In practice, through the use of recombinant DNA technology, one can express entirely heterologous polypeptides—so-called direct expression—or alternatively may express a heterologous polypeptide fused to a portion of the amino acid sequence of a homologous polypeptide. In the latter cases, the intended bioactive product is sometimes rendered bioinactive within the fused, homologous/heterologous polypeptide until it is cleaved in an extracellular environment. See references (21) and (22).

Similarly, the art of cell or tissue cultures for studying genetics and cell physiology is well established. Means and methods are in hand for maintaining permanent cell lines, prepared by successive serial transfers from isolate normal cells. For use in research, such cell lines are maintained on a solid support in liquid medium, or by growth in suspension containing support nutrients. Scale-up for large preparations seems to pose only mechanical problems. For further background, attention is directed to references (23) and (24).

Likewise, protein biochemistry is a useful, indeed necessary, adjunct in biotechnology. Cells producing the desired protein also produce hundreds of other proteins, endogenous products of the cell's metabolism. These contaminating proteins, as well as other compounds, if not removed from the desired protein, could prove toxic if administered to an animal or human in the course of therapeutic treatment with desired protein. Hence, the techniques of protein biochemistry come to bear, allowing the design of separation procedures suitable for the particular system under consideration and providing a homogeneous product safe for intended use. Protein biochemistry also proves the identity of the desired product, characterizing it and ensuring that the cells have produced it faithfully with no alterations or mutations. This branch of science is also involved in the design of bioassays, stability studies and other procedures necessary to apply before successful clinical studies and marketing can take place.

#### SUMMARY OF THE INVENTION

The present invention is based upon the discovery that recombinant DNA technology can be used successfully to produce human tissue plasminogen activator (t-PA), preferably in direct form, and in amounts sufficient to initiate and conduct animal and clinical testing as prerequisites to market approval. The product human t-PA is suitable for use, in

4

all of its forms, in the prophylactic or therapeutic treatment of human beings for various cardiovascular conditions or diseases. Accordingly, the present invention, in one important aspect, is directed to methods of treating vascular disorders in human subjects using t-PA and to suitable pharmaceutical compositions thereof.

The present invention further comprises essentially pure human tissue plasminogen activator. The product produced by genetically engineered microorganisms or cell culture systems provides an opportunity to produce human tissue plasminogen activator in a much more efficient manner than has been possible, enabling hitherto elusive commercial exploitation. In addition, depending upon the host cell, the human tissue plasminogen activator hereof may contain associated glycosylation to a greater or lesser extent compared with native material. In any event, the t-PA will be free of the contaminants normally associated with it in its non-recombinant cellular environment.

The present invention is also directed to replicable DNA expression vehicles harboring gene sequences encoding human tissue plasminogen activator in expressible form, to microorganism strains or cell cultures transformed with them and to microbial or cell cultures of such transformed strains or cultures, capable of producing human tissue plasminogen activator. In still further aspects, the present invention is directed to various processes useful for preparing said gene sequences, DNA expression vehicles, microorganism strains and cell cultures, and specific embodiments thereof. Still further, this invention is directed to the preparation of fermentation cultures of said microorganisms and cell cultures.

#### BRIEF DESCRIPTION OF THE DRAWINGS

FIG. 1 shows a 10% sodium dodecylsulfate polyacrylamide gel electrophoresis (SDS PAGE) of  $^{35}$ S-methionine labelled proteins precipitable with anti t-PA IgG secreted from melanoma cells with and without protease inhibitor.

FIG. 2 shows electrophoresis of the immunoprecipitated translation products of mRNA fractions derived from melanoma cells.

FIG. 3 shows the hybridization pattern of 96 bacterial colonies transformed with cDNA using the pool of  $^{32}$ P labeled 14-mer as probe prepared based on a 5 amino acid sequence of human t-PA.

FIG. 4 is a restriction endonuclease map of the full length human t-PA cDNA.

FIGS. 5a, 5b, and 5c show the nucleotide sequence and deduced amino acid sequence of the full length human t-PA cDNA.

FIG. 6 is a schematic of the construction of the expression plasmid p $\Delta$ RIPA<sup>o</sup>.

FIG. 7 shows the results of a fibrin plate assay for fibrinolytic activity of *E. coli* cells transformed with p $\Delta$ RIPA<sup>o</sup>.

FIG. 8 is an HPLC trace of peptides from human t-PA trypsin digest.

FIG. 9 shows the construction of a plasmid coding for the direct expression of mature human t-PA in *E. coli*.

FIG. 10 shows the results of a fibrin plate assay for fibrinolytic activity of the human t-PA produced by transformed *E. coli*.

FIG. 11 shows the construction of DHFR (mutant or wild type)/t-PA encoding plasmids suitable for transforming into mammalian tissue culture cells.

FIG. 12 is a schematic diagram of human tissue plasminogen activator as prepared by the method exemplified in E.1 herein.

5,753,486

5

## DETAILED DESCRIPTION

## A. Definitions

As used herein, "human tissue plasminogen activator" or "human t-PA" or "t-PA" denotes human extrinsic (tissue-type) plasminogen activator, produced by microbial or cell culture systems, in bioactive forms comprising a protease portion and corresponding to those tissue plasminogen activators otherwise native to human tissue. The human tissue plasminogen activator protein produced herein has been defined by means of determined DNA gene and deductive amino acid sequencing. It will be understood that natural allelic variations exist and occur from individual to individual. These variations may be demonstrated by (an) amino acid difference(s) in the overall sequence or by deletions, substitutions, insertions, inversions or additions of (an) amino acid(s) in said sequence. In addition, the location of and degree of glycosylation will depend on the nature of the host cellular environment.

The potential exists, in the use of recombinant DNA technology, for the preparation of various human tissue plasminogen activator derivatives, variously modified by resultant single or multiple amino acid substitutions, deletions, additions or replacements, for example, by means of site directed mutagenesis of the underlying DNA. Included would be the preparation of derivatives retaining the essential kringle region and serine protease region characteristic generally of the human tissue plasminogen activator described specifically herein, but otherwise modified as described above. All such allelic variations and modifications resulting in derivatives of human tissue plasminogen activator are included within the scope of this invention, as well as other related human extrinsic (tissue-type) plasminogen activators, similar physically and biologically, so long as the essential, characteristic human tissue plasminogen activator activity remains unaffected in kind.

Human tissue plasminogen activator is prepared 1) having methionine as its first amino acid (present by virtue of the ATG start signal codon insertion in front of the structural gene) or 2) where the methionine is intra- or extracellularly cleaved, having its normally first amino acid, or 3) together with either its signal polypeptide or a conjugated protein other than the conventional signal polypeptide, the signal polypeptide or conjugate being specifically cleavable in an intra- or extracellular environment (See reference 21), or 4) by direct expression in mature form without the necessity of cleaving away any extraneous, superfluous polypeptide. The latter is particularly important where a given host may not, or not efficiently, remove a signal peptide where the expression vehicle is designed to express the tissue plasminogen activator together with its signal peptide. In any event, the thus produced human t-PA, in its various forms, is recovered and purified to a level fitting it for use in the treatment of various vascular conditions or diseases.

Furthermore, t-PA has forms which include both the single chain (1-chain) protein and the 2-chain protein. The latter is proteolytically derived from the 1-chain compound. It is theorized that the 2-chain protein is associated with produced fibrin and that proteolytic conversion from 1- to 2-chain material occurs at the locus of the conversion of plasminogen to plasmin. The present invention provides for the administration of the 1-chain protein for in vivo conversion as just described or for the administration of 2-chain protein, which has also been shown to be active. The 2-chain protein can be prepared by in vitro proteolytic conversion after the 1-chain material is produced. A so-called "kringle" area is positioned upstream from the serine protease portion

6

and is believed to play an important function in binding the tissue plasminogen activator hereof to a fibrin matrix; hence, the observed specific activity of the present tissue plasminogen activator toward tangible, extant thrombi. The tissue plasminogen activator hereof is produced containing the enzymatically active portion corresponding to native material and the term human tissue plasminogen activator defines products comprising such portion alone or together with additional amino acid sequences up to the full length molecule.

To summarize in the present invention, human t-PA thus has a functional definition; it is capable of catalyzing the conversion of plasminogen to plasmin, binds to fibrin, and is classified as a t-PA based on immunological properties as set forth hereinabove. "Essentially pure form" when used to describe the state of human t-PA produced by the invention means free of protein or other materials normally associated with human t-PA when produced by non-recombinant cells, i.e. in its "native" environment. "DHFR protein" refers to a protein which is capable of the activity associated with dihydrofolate reductase (DHFR) and which, therefore, is required to be produced by cells which are capable of survival on medium deficient in hypoxanthine, glycine, and thymidine (-HGT medium). In general, cells lacking DHFR protein are incapable of growing on this medium, cells which contain DHFR protein are successful in doing so. "Cells sensitive to MTX" refers to cells which are incapable of growing on media which contain the DHFR inhibitor methotrexate (MTX). Thus, "cells sensitive to MTX" are cells which, unless genetically altered or otherwise supplemented, will fail to grow under ambient and medium conditions suitable for the cell type when the MTX concentration is 0.2 µg/ml or more. Some cells, such as bacteria, fail to exhibit MTX sensitivity due to their failure to permit MTX inside their cell boundaries, even though they contain DHFR which would otherwise be sensitive to this drug. In general, cells which contain, as their DHFR protein, wild type DHFR will be sensitive to methotrexate if they are permeable or capable of uptake with respect to MTX.

"Wild type DHFR" refers to dihydrofolate reductase as is ordinarily found in the particular organism in question. Wild type DHFR is generally sensitive in vitro to low concentrations of methotrexate.

"DHFR protein with low binding affinity for MTX" has a functional definition. This is a DHFR protein which, when generated within cells, will permit the growth of MTX sensitive cells in a medium containing 0.2 µg/ml or more of MTX. It is recognized that such a functional definition depends on the facility with which the organism produces the "DHFR protein with low binding affinity for MTX" as well as upon the protein itself. However, as used in the context of this invention, such a balance between these two mechanisms should not be troublesome. The invention operates with respect to conferring the capability of surviving these levels of MTX, and it is not consequential whether the ability to do so is impacted by increased expression in addition to the innate nature of the DHFR produced. A convenient DHFR protein which fits this definition is disclosed in U.S. application Ser. No. 459,151, filed Jan. 19, 1983, incorporated herein by reference.

"Expression vector" includes vectors which are capable of expressing DNA sequences contained therein, where such sequences are operably linked to other sequences capable of effecting their expression. It is implied, although not always explicitly stated, that these expression vectors must be replicable in the host organisms either as episomes or as an integral part of the chromosomal DNA. Clearly a lack of

5,753,486

7

replicability would render them effectively inoperable. In sum, "expression vector" is given a functional definition, and any DNA sequence which is capable of effecting expression of a specified DNA code disposed therein is included in this term as it is applied to the specified sequence. In general, expression vectors of utility in recombinant DNA techniques are often in the form of "plasmids" which refer to circular double stranded DNA loops which, in their vector form are not bound to the chromosome. In the present specification, "plasmid" and "vector" are used interchangeably as the plasmid is the most commonly used form of vector. However, the invention is intended to include such other forms of expression vectors which serve equivalent functions and which become known in the art subsequently hereto.

"Recombinant host cells" refers to cells which have been transformed with vectors constructed using recombinant DNA techniques. As defined herein, t-PA is produced in the amounts achieved by virtue of this transformation, rather than in such lesser amounts, or, more commonly, in such less than detectable amounts, as might be produced by the untransformed host. t-PA produced by such cells can be referred to as "recombinant t-PA".

#### B. Host Cell Cultures and Vectors

The vectors and methods disclosed herein are suitable for use in host cells over a wide range of prokaryotic and eukaryotic organisms.

In general, of course, prokaryotes are preferred for cloning of DNA sequences in constructing the vectors useful in the invention. For example, *E. coli* K12 strain 294 (ATCC No. 31446) is particularly useful. Other microbial strains which may be used include *E. coli* strains such as *E. coli* B, and *E. coli*.X1776 (ATCC No. 31537). These examples are, of course, intended to be illustrative rather than limiting.

Prokaryotes may also be used for expression. The aforementioned strains, as well as *E. coli* W3110 (F<sup>-</sup>λ<sup>-</sup>, prototrophic, ATCC No. 27325), bacilli such as *Bacillus subtilis*, and other enterobacteriaceae such as *Salmonella typhimurium* or *Serratia marcescens*, and various pseudomonas species may be used.

In general, plasmid vectors containing replicon and control sequences which are derived from species compatible with the host cell are used in connection with these hosts. The vector ordinarily carries a replication site, as well as marking sequences which are capable of providing phenotypic selection in transformed cells. For example, *E. coli* is typically transformed using pBR 322, a plasmid derived from an *E. coli* species (Bolivar, et al., *Gene* 2: 95 (1977)). pBR322 contains genes for ampicillin and tetracycline resistance and thus provides easy means for identifying transformed cells. The pBR322 plasmid, or other microbial plasmid must also contain, or be modified to contain, promoters which can be used by the microbial organism for expression of its own proteins. Those promoters most commonly used in recombinant DNA construction include the β-lactamase (penicillinase) and lactose promoter systems (Chang et al. *Nature*, 275: 617 (1978); Itakura, et al. *Science*, 198: 1056 (1977); (Goeddel, et al *Nature* 281: 544 (1979)) and a tryptophan (trp) promoter system (Goeddel, et al. *Nucleic Acids Res.*, 8: 4057 (1980); EPO Appl Publ No. 0036776). While these are the most commonly used, other microbial promoters have been discovered and utilized, and details concerning their nucleotide sequences have been published, enabling a skilled worker to ligate them functionally with plasmid vectors (Siebenlist, et al. *Cell* 20: 269 (1980)).

In addition to prokaryotes, eukaryotic microbes, such as yeast cultures may also be used. *Saccharomyces cerevisiae*,

8

or common baker's yeast is the most commonly used among eukaryotic microorganisms, although a number of other strains are commonly available. For expression in *Saccharomyces*, the plasmid YRp7, for example, (Stinchcomb, et al. *Nature*, 282: 39 (1979); Kingsman et al. *Gene*, 7: 141 (1979); Tschemper, et al. *Gene*, 10: 157 (1980)) is commonly used. This plasmid already contains the trp1 gene which provides a selection marker for a mutant strain of yeast lacking the ability to grow in tryptophan, for example ATCC No. 44076 or PEP4-1 (Jones, *Genetics*, 85: 12 (1977)). The presence of the trp1 lesion as a characteristic of the yeast host cell genome then provides an effective environment for detecting transformation by growth in the absence of tryptophan.

Suitable promoting sequences in yeast vectors include the promoters for 3-phosphoglycerate kinase (Hitzeman, et al., *J. Biol. Chem.*, 255: (2073 (1980)) or other glycolytic enzymes (Hess, et al. *J. Adv. Enzyme Reg.*, 7: 149 (1968); Holland, et al. *Biochemistry*, 17: 4900 (1978)), such as enolase, glyceraldehyde-3-phosphate dehydrogenase, hexokinase, pyruvate decarboxylase, phosphofructokinase, glucose-6-phosphate isomerase, 3-phosphoglycerate mutase, pyruvate kinase, triosephosphate isomerase, phosphoglucose isomerase, and glucokinase. In constructing suitable expression plasmids, the termination sequences associated with these genes are also ligated into the expression vector 3' of the sequence desired to be expressed to provide polyadenylation of the mRNA and termination. Other promoters, which have the additional advantage of transcription controlled by growth conditions are the promoter regions for alcohol dehydrogenase 2, isocytochrome C, acid phosphatase, degradative enzymes associated with nitrogen metabolism, and the aforementioned glyceraldehyde-3-phosphate dehydrogenase, and enzymes responsible for maltose and galactose utilization (Holland, *ibid.*). Any plasmid vector containing yeast-compatible promoter, origin of replication and termination sequences is suitable.

In addition to microorganisms, cultures of cells derived from multicellular organisms may also be used as hosts. In principle, any such cell culture is workable, whether from vertebrate or invertebrate culture. However interest has been greatest in vertebrate cells, and propagation of vertebrate cells in culture (tissue culture) has become a routine procedure in recent years [*Tissue Culture*, Academic Press, Kruse and Patterson, editors (1973)]. Examples of such useful host cell lines are VERO and HeLa cells, Chinese hamster ovary (CHO) cell lines, and W138, BHK, COS-7 and MDCK cell lines. Expression vectors for such cells ordinarily include (if necessary) an origin of replication, a promoter located in front of the gene to be expressed, along with any necessary ribosome binding sites, RNA splice sites, polyadenylation site, and transcriptional terminator sequences.

For use in mammalian cells, the control functions on the expression vectors are often provided by viral material. For example, commonly used promoters are derived from polyoma, Adenovirus 2, and most frequently Simian Virus 40 (SV40). The early and late promoters of SV40 virus are particularly useful because both are obtained easily from the virus as a fragment which also contains the SV40 viral origin of replication (Fiers, et al. *Nature*, 273: 113 (1978) incorporated herein by reference. Smaller or larger SV40 fragments may also be used, provided there is included the approximately 250 bp sequence extending from the Hind III site toward the Bgl I site located in the viral origin of replication. Further, it is also possible, and often desirable, to utilize promoter or control sequences normally associated



5,753,486

9

with the desired gene sequence, provided such control sequences are compatible with the host cell systems. An origin of replication may be provided either by construction of the vector to include an exogenous origin, such as may be derived from SV40 or other viral (e.g. Polyoma, Adeno, VSV, BPV, etc.) source, or may be provided by the host cell chromosomal replication mechanism. If the vector is integrated into the host cell chromosome, the latter is often sufficient.

In selecting a preferred host cell for transfection by the vectors of the invention which comprise DNA sequences encoding both t-PA and DHFR protein, it is appropriate to select the host according to the type of DHFR- protein employed. If wild type DHFR protein is employed, it is preferable to select a host cell which is deficient in DHFR, thus permitting the use of the DHFR coding sequence as a marker for successful transfection in selective medium which lacks hypoxanthine, glycine, and thymidine. An appropriate host cell in this case is the Chinese hamster ovary (CHO) cell line deficient in DHFR activity, prepared and propagated as described by Urlaub and Chasin, *Proc. Natl. Acad. Sci. (U.S.A.)* 77: 4216 (1980), incorporated herein by reference.

On the other hand, if DHFR protein with low binding affinity for MTX is used as the controlling sequence, it is not necessary to use DHFR resistant cells. Because the mutant DHFR is deficient to methotrexate, MTX containing media can be used as a means of selection provided that the host cells are themselves methotrexate sensitive. Most eukaryotic cells which are capable of absorbing MTX appear to be methotrexate sensitive. One such useful cell line is a CHO line, CHO-K1 ATCC No. CCL 61.

Examples which are set forth hereinbelow describe use of *E. coli* using the lac and trp promoter system and use of CHO cells as host cells, and expression vectors which include the SV40 origin of replication as a promoter. However, to be used well within the skill of the art to use analogous techniques to construct expression vectors for expression of desired protein sequences in alternative prokaryotic or eukaryotic host cell cultures.

Satisfactory amounts of human t-PA are produced by cell cultures, however, later refinements using a secondary coding sequence serve to enhance production levels even further. The secondary coding sequence serve to enhance production levels even further. The secondary coding sequence comprises dihydrofolate reductase (DHFR) which is affected by an externally controlled parameter, such as methotrexate, thus permitting control of expression by control of the methotrexate (MTX) concentration.

#### C. Methods Employed

If cells without formidable cell membrane barriers are used as host cells, transfection is carried out by the calcium phosphate precipitation method as described by Graham and Van der Eb, *Virology*, 52: 456 (1973). However, other methods for introducing DNA into cells such as by nuclear injection or by protoplast fusion may also be used.

If prokaryotic cells or cells which contain substantial cell wall constructions are used, the preferred method of transfection is calcium treatment using calcium chloride as described by Cohen, F. N. et al *Proc. Natl. Acad. Sci. (U.S.A.)*, 69: 2110 (1972).

Construction of suitable vectors containing the desired coding and control sequences employ standard ligation techniques. Isolated plasmids or DNA fragments are cleaved, tailored, and religated in the form desired to form the plasmids required.

Cleavage is performed by treating with restriction enzyme (or enzymes) in suitable buffer. In general, about 1 µg

10

plasmid or DNA fragments is used with about 1 unit of enzyme in about 20 µl of buffer solution. (Appropriate buffers and substrate amounts for particular restriction enzymes are specified by the manufacturer.) Incubation times of about 1 hour at 37° C. are workable. After incubations, protein is removed by extraction with phenol and chloroform, and the nucleic acid is recovered from the aqueous fraction by precipitation with ethanol.

If blunt ends are required, the preparation is treated for 15 minutes at 15° C. with 10 units of Polymerase I (Klenow), phenol-chloroform extracted, and ethanol precipitated.

Size separation of the cleaved fragments is performed using 6 percent polyacrylamide gel described by Goeddel, D., et al. *Nucleic Acids Res.*, 8: 4057 (1980) incorporated herein by reference.

For ligation approximately equimolar amounts of the desired components, suitably end tailored to provide correct matching are treated with about 10 units T4 DNA ligase per 0.5 µg DNA. (When cleaved vectors are used as components, it may be useful to prevent religation of the cleaved vector by pretreatment with bacterial alkaline phosphatase.)

For analysis to confirm correct sequences in plasmids constructed, the ligation mixtures are used to transform *E. coli* K12 strain 294 (ATCC 31446), and successful transformants selected by ampicillin or tetracycline resistance where appropriate. Plasmids from the transformants are prepared, analyzed by restriction and/or sequenced by the method of Messing, et al. *Nucleic Acids Res.*, 9: 309 (1981) or by the method of Maxam, et al. *Methods in Enzymology*, 65:499 (1980).

Amplification of DHFR protein coding sequences is effected by growing host cell cultures in the presence of approximately 20-500,000 nM concentrations of methotrexate, a competitive inhibitor of DHFR activity. The effective range of concentration is highly dependent, of course, upon the nature of the DHFR gene, protein and the characteristics of the host. Clearly, generally defined upper and lower limits cannot be ascertained. Suitable concentrations of other folic acid analogs or other compounds which inhibit DHFR could also be used. MTX itself is, however, convenient, readily available and effective.

#### D. General Description of Preferred Embodiments

Human tissue plasminogen activator was obtained according to the following protocol:

1. Human melanoma cells actively producing tissue plasminogen activator were cultured to confluency.
2. Cell pellets from such cell cultures were extracted in the presence of ribonuclease inhibitors to isolate all cytoplasmic RNA.
3. An oligo-dT column isolated the total messenger RNA (mRNA) in polyadenylated form. This mRNA was size fractionated using acid-urea agarose gel electrophoresis.
4. The gel fraction containing tissue plasminogen activator specific RNA was identified in the following manner: The RNA from each of the gel fractions was translated in a rabbit reticulocyte lysate in vitro system supplemented with dog pancreas microsomes. The resulting translation products were then immunoprecipitated with human tissue plasminogen activator specific IgG antibody.
5. The appropriate RNA (21 to 24S) was converted to corresponding single stranded complementary DNA (cDNA) from which was produced double stranded cDNA. After poly-dC tailing, it was inserted into a

5,753,486

11

vector, such as a plasmid bearing one or more phenotypic markers.

6. The thus prepared vectors were used to transform bacterial cells providing a cloned cDNA library. A pool of radiolabeled synthetic deoxy oligonucleotides complementary to codons for known amino acid sequences in t-PA, such as, for example the pool of 8 14-mers,



(complementary to sequences coding for the known—see infra—amino acid sequence: tryptophan—glutamic acid—tyrosine—cysteine—aspartic acid (W-E-Y-C-D) was prepared and used to probe the colony library.

7. From the positive cDNA clones plasmid DNA was isolated and sequenced.
8. The sequenced DNA encoding t-PA was then tailored in vitro for insertion into an appropriate expression vehicle which was used to transform an appropriate host cell, which was, in turn, permitted to grow in a culture and to produce the desired human tissue plasminogen activator.
9. Human tissue plasminogen activator thus produced has ca. 251 amino acids in its enzymatic serine protease portion and a “kringle” containing sequence upstream therefrom which is presently believed to be responsible for fibrin binding. The mature protein plus its signal presequence, totals 562 amino acids.

The foregoing procedure, in itself, is successful in producing pure t-PA. Methods of the invention employing an additional coding sequence sensitive to methotrexate permit the production in host cell cultures of antigenically active t-PA protein in amounts greater than 0.1 pg per cell per day. With suitable application of amplifying conditions, amounts greater than 20 pg per cell per day can be obtained. Stated in alternate terms, gene expression levels resulting in production of more than  $9 \times 10^{-6}$  Plough units, per cell per day or, with suitable amplification, more than  $18 \times 10^{-4}$  Plough units of per cell per day t-PA activity are achieved.

Advantage is taken in this aspect of the invention of methotrexate as a drug which, while normally fatal to cells capable of its uptake, permits cells to grow in the presence of controlled levels of MTX by amplification of the gene coding for the DHFR coding sequence (Schimke, Robert T. et al. *Science*, 202: 1051 (1978); Biedler, J. L. et al. *Cancer Res.* 32: 153 (1972); Chang, S. E., et al. *Cell*, 7: 391 (1976)).

Of importance to this aspect of the invention is the showing that amplification of the gene for DHFR may cause amplification of associated sequences which code for other proteins. This appears to be the case when the associated protein is hepatitis B surface antigen (HBsAg) (Christman, J. et al. *Proc. Natl. Acad. Sci.*, 79: 1815 (1982)); the *E. coli* protein XGPRT (Ringold, Gordon, et al. *J. Molec. and Appl. Gen.*, 1: 165 (1981)); and an endogenous sequence from a DHFR/SV40 plasmid combination (Kaufman, R. F. et al. *J. Molec. Biol.*, 159: 601 (1982)).

Other mechanisms for conferring methotrexate resistance include diminution of the binding affinity of the DHFR protein, so that it is less susceptible to methotrexate (Flintoff, W. F. et al. *Somat. Cell Genet.*, 2: 245 (1976)) but in this instance, amplification appears to occur as well.

It would appear that the genes both for wild type DHFR and for DHFR which is resistant to MTX by virtue of its own decreased binding capacity are amplified by the presence of

12

MTX. Hence, in principle, this aspect of the invention herein concerns using the impact of DHFR sequence amplification on associated protein coding sequences to provide a control mechanism which permits enhanced expression levels of t-PA sequences in the presence of MTX, or by virtue of prior treatment of transformed cells with MTX.

#### E. Examples

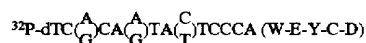
The following examples are intended to illustrate but not to limit the invention. In the examples here an *E. coli* host culture and a CHO cell line suitable for the type of DHFR protein coding sequence to be introduced were employed as host cell cultures. However, other eukaryotic and prokaryotic cells are suitable for the method of the invention as well. E.1 Expression of the Human t-PA Gene in *E. coli*

##### E.1.A Figure Legends

FIG. 1 is an autoradiogram of a 10 percent SDS PAGE displaying the immunoprecipitated [<sup>35</sup>S]-methionine labeled protein(s) secreted from human melanoma cells during a 3 hour pulse in vivo, in the presence (lane b) or absence (lane a) of the protease inhibitor aprotinin. After immunoprecipitation with tissue plasminogen activator specific IgG, three bands were observed (lane a) having molecular weights of approximately 65,000, 63,000 and 35,000. In the presence of the protease inhibitor, however, no 35,000 molecular weight species is observed. No products are immunoprecipitated when preimmune serum is used (lane c). The migrations and molecular weights of <sup>14</sup>C-labelled protein standards are shown to the left of lane a.

FIG. 2 depicts the gel electrophoresis of the immunoprecipitated translation products of RNA fractions isolated from an acid urea agarose gel. A major band was observed in fraction numbers 7 and 8 after translation in the presence of dog pancreas microsomes followed by immune precipitation with tissue plasminogen activator specific IgG. This band has a molecular weight of approximately 63,000 daltons. The size of the mRNA migrating in fractions 7 and 8 is approximately 21 to 24S. The positions of ribosomal RNA markers which were determined after electrophoresis on the RNA urea gel and visualized by ethidium bromide staining are labeled above the appropriate gel lanes.

FIG. 3 displays the hybridization pattern of 96 colonies with



probe. 96 individual transformants were grown in a micro-titer plate, replica plated and grown on a nitrocellulose membrane. The colonies were then lysed, bacterial DNA fixed and the filters were hybridized with the <sup>32</sup>P-14-mer (W-E-Y-C-D) probes. The filters were washed to remove nonhybridized probe and exposed to X-ray film. This autoradiogram is representative of the patterns obtained with 48 individual filters (4600 independent colonies). An example of a positive tissue plasminogen activator cDNA clone on filter number 25 is labelled as E10 (arrow).

FIG. 4 is a restriction endonuclease map of the full length human tissue plasminogen activator cDNA. The number and size of fragments produced by restriction endonuclease cleavage was estimated by electrophoresis through 6 percent acrylamide gels. Positions of sites were confirmed by nucleic acid sequence (presented in FIG. 5). The coding region of the largest open reading frame is boxed and the hatched region represents the putative signal peptide sequence, while the stippled region represents the putative mature tissue plasminogen activator sequence (527 amino acids). The 5' end of the mRNA is to the left while the 3' end is to the right.

5,753,486

## 13

FIGS. 5A, 5B, and 5C illustrate the nucleotide sequence and deduced amino acid sequence of the full length human tissue plasminogen activator cDNA. The 35 amino acids (-35 to -1) preceding the mature sequence is depicted as an uninterrupted sequence. It is believed that this 35-amino acid sequence is comprised of a hydrophilic "pro" sequence, preceding serine (+1) of the mature protein, of about 12 to 15 amino acids, in turn preceded by a "conventional" hydrophobic signal (extending 5' to -35). This type of pre-pro structure on secreted proteins has been described previously, e.g. with preproalbumin. Assuming this theory, all of the secreted tissue plasminogen activator molecules will start with the serine (+1) as the amino-terminus. A second theory is that the hydrophilic sequence could be involved with the function of tissue plasminogen activator in a manner analogous to that observed with plasminogen where a peptide of 10,000 daltons can be cleaved from the amino terminal portion of native plasminogen (Glu-plasminogen, named for the amino terminal residue), resulting in a smaller molecule, with a new amino terminus, designated Lys-plasminogen. Lys-plasminogen is more easily activated to plasmin, and also has a greater affinity for fibrin than Glu plasminogen. Plasmin has been shown to catalyze the conversion of Glu- to Lys-plasminogen. This type of control mechanism results in a "positive feedback" mechanism. The first amounts of plasmin formed, beside degrading fibrin, also result in the generation of plasminogen molecules which are more easily activated, and also bind tighter to their substrate, than native plasminogen. The result is a faster degradation of fibrin. The hydrophilic peptide of tissue plasminogen activator could be involved in a similar mechanism, its cleavage resulting in modified binding of the enzyme to fibrin. In any event the 35 amino acid sequence is considered a presequence of the mature protein.

FIG. 6 is a schematic diagram of the construction of a tissue plasminogen activator expression plasmid pARIPA°. The starting plasmid pPA25E10 was first digested with PstI to isolate a 376 bp. fragment that was then digested as shown in the figure.

FIG. 7 shows the result of a fibrin plate assay for fibrinolytic activity of the expression product obtained via pARIPA° in transformed cells.

FIG. 8 is an HPLC trace of peptides from tissue plasminogen activator (hereof) trypsin digest (Absorbance at 210 nm). The arrow identifies the peak corresponding to the peptide used to design the nucleotide probe used with the colony library. The peptide represented by this peak was found to have the entire sequence: L-T-W-E-Y-C-D-V-P-S-C-S-T-C-G-L. The other major peaks likewise were sequenced and found to confirm the correct amino sequence of human tissue plasminogen activator. The peptide one letter code referring to amino acid designations is as follows:

Asp	D	Aspartic acid	Ile	I	Isoleucine
Thr	T	Threonine	Leu	L	Leucine
Ser	S	Serine	Tyr	Y	Tyrosine
Glu	E	Glutamic acid	Phe	F	Phenylalanine
Pro	P	Proline	His	H	Histidine
Gly	G	Glycine	Lys	K	Lysine
Ala	A	Alanine	Arg	R	Arginine
Cys	C	Cysteine	Trp	W	Tryptophan
Val	V	Valine	Gln	Q	Glutamine
Met	M	Methionine	Asn	N	Asparagine

FIG. 9 depicts the construction of a plasmid coding for the direct expression of mature human tissue plasminogen activator in *E. coli*. 50 µg of plasmid pPA17 was digested with

## 14

Sau3AI, HincII and HhaI and electrophoresed on a 6 percent polyacrylamide gel. Approximately 0.5 µg of the 55 bp Sau3AI-HhaI fragment was recovered. Similarly, approximately 3 µg of the 263 bp HhaI-NarI fragment was purified from 80 µg of clone pPA25E10 by first isolating a 300 bp PstI-NarI fragment and then digesting this fragment with HhaI. All digests were performed at 37° C. for 1 hour and the reaction products resolved and electroeluted from 6 percent polyacrylamide gels. The two indicated deoxyoligonucleotides 5' AATTCATGTCCTTATCAAGT (I) and 5' GAT-CACCTTGATAAGACATG (II) were synthesized by the solid phase phosphotriester method (51). 100 pmole of oligonucleotide II was phosphorylated in a 30 µl reaction mixture containing 60 mM Tris (pH 8), 10 mM MgCl<sub>2</sub>, 15 mM β-mercaptoethanol and 50 µCi [<sup>32</sup>P]ATP (Amersham 5,000 Ci mmol<sup>-1</sup>) 12 units of T4 polynucleotide kinase were added and the reaction allowed to proceed at 37° for 15 min. One µl of 10 mM ATP and 12 units of T4 kinase were then added and the reaction allowed to proceed for an additional 30 min. After phenol/CHCl<sub>3</sub> extraction, the phosphorylated oligomer II and the 5' hydroxyl oligomer I were combined with 0.5 µg of the eluted 55 bp Sau3AI-HhaI fragment and 2 µg of the 263 bp HhaI-NarI fragment and ethanol precipitated. These fragments were ligated at room temperature for 4 hours in 60 µl of 20 mM Tris-HCl (pH 7.5), 10 mM MgCl<sub>2</sub>, 10 mM dithiothreitol, 0.5 mM ATP and 1000 units of T4 DNA ligase. The mixture was digested for 1 hour with 48 units of NarI, 20 units of EcoRI and 40 units of BglII (to eliminate polymerization through ligation of cohesive Sau3AI termini) and electrophoresed on a 6 percent gel. The 338 bp product (approximately 0.1 µg) was recovered by electroelution. The remainder of the t-PA coding sequences (amino acids 111-528) were isolated on a 1645 bp fragment by digesting plasmid pPA25E10 with NarI and BIII. The plasmid pLeIFAtpr103 is a derivative of the plasmid pLeIFA25 (52) in which the EcoRI site distal to the LeIF A gene has been removed (53). Three µg of pLeIFAtpr103 were digested with 20 units of EcoRI and 20 units of BqIII for 90 min. at 37° C., electrophoresed on a 6 percent polyacrylamide gel and the large (-4,200 bp) vector fragment was recovered by electroelution. For the final construction, 80 ng of EcoRI-BglII pLeIFAtpr103 was ligated with 100 ng of the 1645 bp NarI-BglII fragment and 20 ng of the 338 bp EcoRI-NarI fragment for 10 hours at room temperature. This ligation mixture was used to transform *E. coli* K-12 Strain 294. Plasmid DNA was prepared from 38 of these transformants and digested with EcoRI. Ten of these plasmids contained the desired 600 bp and 472 bp EcoRI fragments. DNA sequence analysis verified that one of these plasmids (pt-PAtpr12) had the desired nucleotide sequence at the junctions between the trp promoter, synthetic DNA and cDNA.

FIG. 10 shows the result of a fibrin plate assay for fibrinolytic activity of a tissue plasminogen activator expression -product hereof. An overnight culture of *E. coli* W3110 (ATCC 27325) containing a t-PA expression vector in Luria broth containing 5 µg ml<sup>-1</sup> tetracycline was diluted 1:100 in M9 medium containing 0.2 percent glucose, 0.5 percent casamino acids and 5 µg ml<sup>-1</sup> tetracycline. The cells were grown at 37° C. to an A<sub>550</sub> of 0.2 and indole acrylic acid was added to a final concentration of 20 µg/ml. Samples were collected by centrifugation at A<sub>550</sub>=0.5-0.6 (-2×10<sup>8</sup> cells ml<sup>-1</sup>) and immediately frozen. The cell pellets were suspended in 6M guanidine hydrochloride at 5×10<sup>8</sup> cells/ml, sonicated for 10 sec, incubated at 24° for 30 min and then dialyzed for 4 hrs against 25 mM Tris-HCl pH 8.0, 250 mM NaCl, 0.25 mM EDTA and 0.01 percent Tween 80. After

5,753,486

15

dialysis the samples were centrifuged at 13,000×g for 2 min and 10 µl of the supernatants analyzed for tissue plasminogen activator activity. Following the procedure of Granelli-Piperno and Reich (87), the plate was incubated for 3.5 hours at 37° C. and lysis zones measured.

Plasmin produces a clear lysis zone in the fibrin plate and the area of this zone can be correlated to the amount of tissue plasminogen activator in the sample.

#### E.1.B Source of Tissue Plasminogen Activator mRNA

Human melanoma cells (Bowes melanoma cell line, ATCC accession number CRL 9607) were used. The melanoma cells were cultured to confluent monolayers in 100 ml Earles Minimal Essential Media supplemented with sodium bicarbonate (0.12 percent final concentration), 2mM glutamine and 10 percent heat-inactivated fetal calf serum. To confirm that the melanoma cells were actively producing human tissue plasminogen activator, human melanoma cells were cultured to confluency in a 24 well microtiter dish. Either in the presence or absence of 0.33 µM the protease inhibitor aprotinin, the cells were washed once with phosphate buffered saline and 0.3 ml of serum free methionine free medium was added. 75 µCi of [<sup>35</sup>S]-methionine was added and the cells were labeled at 37° for 3 hours. At the end of the 3 hour labelling period the media was removed from the cells and treated with either tissue plasminogen activator specific IgG or pre-immune serum for immunoprecipitation (54). The immunoprecipitated products were displayed by electrophoresis on a 10 percent SDS-acrylamide gel. The slab gel was fixed, dried and subjected to fluorography.

#### E.1.C Messenger RNA Isolation and Size Fractionation

Total RNA from melanoma cell cultures was extracted essentially as reported by Ward et al. (55). Cells were pelleted by centrifugation and then resuspended in 10 mM NaCl, 10 mM Tris-HCl pH 7.5, 1.5 mM MgCl<sub>2</sub>. Cells were lysed by the addition of NP-40 (1 percent final concentration), and nuclei were pelleted by centrifugation. The supernatant contained the total RNA which was further purified by multiple phenol and chloroform extractions. The aqueous phase was made 0.2M in NaCl and then total RNA was precipitated by the addition of two volumes of ethanol. Oligo-dT cellulose chromatography was utilized to purify mRNA from the total RNA preparations (54). Typical yields from 10 grams of cultured melanoma cells were 5 to 10 milligrams of total RNA and 50–200 micrograms of Poly(A)<sup>+</sup> plus mRNA.

Fractionation of PolyA<sup>+</sup> mRNA (200 µg) (56) was performed by electrophoresis through urea-agarose gels. The slab agarose gel (57, 58) was composed of 1.75 percent agarose, 0.025M sodium citrate, pH 3.8 and 6M urea. Electrophoresis was performed for 7 hours at 25 milliamps and 4° C. The gel was then fractionated with a razor blade. The individual slices were melted at 70° and extracted twice with phenol and once with chloroform. Fractions were then ethanol precipitated and subsequently assayed by in vitro translation in a rabbit reticulocyte lysate system. Bethesda Research Lab. (59,60), supplemented with dog pancreas microsomes as follows: Translations were performed using 25 µCi of [<sup>35</sup>S] methionine and 500 nanograms of each gel slice RNA in a final volume of 30 µl containing 25 mM HEPES, 48.3 mM potassium chloride, 10 mM creatine phosphate, 19 amino acids at 50 mM each, 1.1 mM magnesium chloride 16.6 mM EDTA, 0.16 mM dithiothreitol 8.3 mM hemin, 16.6 µg/ml creatine kinase, 0.33 mM calcium chloride, 0.66 mM EGTA, 23.3 mM sodium chloride.

Incubations were carried out at 30° C. for 90 minutes. Dog pancreas microsomal membranes prepared from rough

16

microsomes using EDTA for removal of the ribosomes (61) were treated with nuclease as described (62) and were present in the translation mixture at a final concentration of 7 A<sub>260</sub> units/ml. Translation products or immunoprecipitated translation products were analyzed by electrophoresis on 10 percent polyacrylamide gels in sodium dodecyl sulfate as previously described (63). The unstained slab gels were fixed, dried and subjected to fluorography (64).

The resulting translation products from each gel fraction were immunoprecipitated with rabbit anti-human tissue plasminogen activator specific IgG. One major immunoprecipitated polypeptide band was observed in the translation of RNA fraction numbers 7 and 8 (migration of 21 to 24S) having a molecular weight of approximately 63,000 daltons. This band was not observed when preimmune IgG was used for immunoprecipitation which suggested these polypeptides were tissue plasminogen activator specific.

#### E.1.D Preparation of a Colony Library Containing Tissue Plasminogen Activator Sequences

Five µg of gel fractionated mRNA (gel slice 7 mRNA) was used for the preparation of double stranded cDNA by standard procedures (52,65,66). The cDNA was size fractionated on a 6 percent polyacrylamide gel. The cDNA greater than 350 base pairs in length (125 ng) was electroeluted. 30 ng of cDNA was extended with deoxy(C) residues using terminal deoxynucleotidyl transferase (67) and annealed with 300 ng of the plasmid pBR322 (68) which had been similarly tailed with deoxy(G) residues at the Pst I site (67). The annealed mixture was then transformed into *E. coli* K12 strain 294 (ATCC No. 31446). Approximately 4,600 transformants were obtained.

#### E.1.E Preparation of DNA Probe

Purified human tissue plasminogen activator was obtained according to the procedure of disclosed references (19, 20).

The molecule was scanned in order to locate regions best suited for making synthetic probes, as follows:

To make the proteins susceptible to digestion by trypsin it was reduced and carboxymethylated. A 2 mg sample of tissue plasminogen activator was first dialyzed against 0.01 percent Tween 80 over night at room temperature. The lyophilized protein was then dissolved in 12 ml of 0.56M Tris-HCl buffer (pH 8.6), 8 molar in urea and 5 mM EDTA. The disulfide bonds were reduced by the addition of 0.1 ml of β-mercaptoethanol. This reaction was carried out under nitrogen for 2 hours at 45° C. The reduced disulfides were alkylated to the carboxymethyl derivative by the addition of 1.0 ml of 1.4M iodoacetic acid in 1N NaOH. After 20 min at room temperature the reaction was stopped by dialysis against 0.01 percent Tween 80 for 18 hours at room temperature and lyophilized.

The resulting lyophilized carboxymethylated protein was redissolved in 3 ml of 0.1M sodium phosphate buffer (pH 7.5). Trypsin (TPCK) was added (1 to S0 ratio) and digested at 37° C. Aliquots (0.1 ml) were taken at 3 hours, 6 hours, and 12 hr. A second addition of trypsin was made at 12 hr. The reaction was stopped after 24 hr by freezing the sample until it could be injected on the HPLC. The progress of the digestion was determined by SDS gels on the aliquots. All gels were blank except for a faint band on the 3 hour aliquot. This indicated that the 24 hour digestion was complete and no large peptides remained.

A sample (ca. 0.5 ml) was injected into a high resolution Altex C-8 ultrasphere 5µ column with two runs. A gradient of acetonitrile was made gradual (1 percent to 5 percent in 5 min, 5 percent to 35 percent in 100 min, 35–50 percent in 30 min). In one of the two preparative runs, the eluant was monitored at two wavelengths (210 nm and 280 nm). The

5,753,486

17

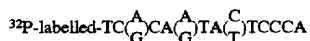
ratio of the two wavelength absorptions was used to indicate the tryptophan containing peptides.

The peptide peaks most likely to contain tryptophan, or that were believed useful for other reasons, were sequenced first. This enabled the determination of the sequence around most of the tryptophans. After sequencing about 25 of the best possible peptide peaks, all the sequence data that could be aligned was pooled to obtain a preliminary model of the primary structure of tissue plasminogen activator. From this data and model, several possible probes were located.

#### E.1.F Identification of Bacterial Clones Containing Tissue Plasminogen Activator cDNA Sequences

The colonies were individually inoculated into wells of microtiter plates containing LB (93)+5 µg/ml tetracycline and stored at -20° C. after addition of DMSO to 7 percent. Two copies of the colony library were grown up on nitrocellulose filters and the DNA from each colony fixed to the filter by the Grunstein Hogness procedure (69).

The



probe was prepared (from the synthetic oligomer) (W-E-Y-C-D) -14-mer pool as described above. Filters containing 4,600 transformants were prehybridized for 2 hours at room temperature in 50 mM sodium phosphate pH 6.8, 5×SSC (80), 150 µg/ml sonicated salmon sperm DNA, 5×Denhardt's solution (85) 10 percent formamide and then hybridized with 50×10<sup>6</sup> counts per minute-of the labelled probe in the same solution. After an overnight incubation at room temperature, the filters were washed 3 times at room temperature in 6×SSC, 0.1 percent SDS for 30 minutes, once in 2×SSC and then exposed to Kodak XR-5 x-ray film with Dupont Lightning Plus intensifying screens for 16 hours.

Plasmid DNA was isolated by a rapid method (71) from all colonies showing a positive hybridization reaction. The cDNA inserts from these clones were then sequenced after subcloning fragments into the M13 vector mp 7 (73) and by the Maxam Gilbert chemical procedure (74). FIG. 3 displays filter number 25 showing the hybridization pattern of a positive tissue plasminogen activator clone. The cDNA insert in clone 25E10 was demonstrated to be the DNA coding for tissue plasminogen activator by comparing its amino acid sequence with peptide sequence (See Supra) obtained from purified tissue plasminogen activator and by its expression product produced in *E. coli* as described in more detail infra. The cDNA insert of clone 25E10 (plasmid pPA25E10) was 2304 base pairs in length with the longest open reading frame encoding a protein of 508 amino acids (MW of 56,756) and containing 772 bp 3' untranslated region. This cDNA clone lacked the N-terminal coding sequences.

Bacterial clone *E. coli* (pPA25E10), as well as a sample of plasmid pPA25E10, have been deposited with the American Type Culture Collection and accorded accession numbers 67587 and 40401, respectively.

#### E.1.G Direct Expression of a Human Tissue Plasminogen Activator Clone in *E. coli*

With reference to FIG. 6, 50 µg of pPA25E10 (supra) were digested with Pst I and the 376 bp fragment isolated by electrophoresis on a 6 percent polyacrylamide gel. Approximately 3 µg of this fragment was isolated from the gel by electroeluting, digested with 30 units of Dde I for 1 hr at 37° phenol and chloroform extracted, and ethanol precipitated. The resulting Dde I sticky ends were extended to blunt ends by adding 5 units of DNA polymerase I (Klenow fragment)

18

and 0.1 mM each of dATP, dCTP, dGTP, dTTP to the reaction mixture and incubating at 4° for 8 hours. After extraction with phenol and chloroform, the DNA was digested with 15 units of Nar I for 2 hours and the reaction mixture electrophoresed on a 6 percent polyacrylamide gel. Approximately 0.5 µg of the desired 125 bp blunt end Nar I fragment was recovered. This fragment codes for amino acids number 69 through 110 of the mature full length tissue plasminogen activator protein.

For isolation of the 1645 bp Nar I-Bgl II fragment, 30 µg of pPA25E10 were digested with 30 units of Nar I and 35 units of Bgl II for 2 hours at 37 and the reaction mixture electrophoresed on a 6 percent polyacrylamide gel. Approximately 6 µg of the desired 1645 bp Nar I-Bgl II fragment were recovered.

The plasmid pdeltaRISRC is a derivative of the plasmid pSRCex16 (79) in which the Eco RI sites proximal to the trp promoter and distal to the SRC gene have been removed by repair with DNA polymerase I (28), and the self-complementary oligodeoxynucleotide AATTATGAATTCAT (synthesized by the phosphotriester method (75) was inserted into the remaining Eco RI site immediately adjacent to the Xba I site. 20 µg of pdeltaRISRC were digested to completion with Eco RI, phenol and chloroform extracted, and ethanol precipitated. The plasmid was then digested with 100 units of nuclease S1 at 16° C. for 30 minutes in 25 mM sodium acetate (pH 4.6), 1 mM ZnCl<sub>2</sub> and 0.3M NaCl to create a blunt end with the sequence ATG. After phenol and chloroform extraction and ethanol precipitation, the DNA was digested with Bam HI, electrophoresed on a 6 percent polyacrylamide gel, and the large (4,300 bp) vector fragment recovered by electroelution.

The expression plasmid was assembled by ligating together 0.2 µg of vector, 0.06 µg of the 125 bp blunt end—Nar I fragment and 0.6 µg of the 1645 bp Nar I-Bgl II fragment with 10 units of T4 DNA ligase for 7 hours at room temperature and used to transform *E. coli* strain 294 (ATCC No. 31446) to ampicillin resistance. Plasmid DNA was prepared from 26 of the colonies and digested with Xba I and Eco RI. Twelve of these plasmids contained the desired 415 bp Xba I-Eco RI and 472 bp Eco RI-fragments. DNA sequence analysis verified that several of these plasmids had an ATG initiation codon correctly placed at the start of amino acid number 69 (serine). One of these plasmids, pARIPA<sup>o</sup> was tested and produced the desired tissue plasminogen activator (FIG. 7).

Bacterial clone *E. coli* (pARIPA<sup>o</sup>), as well as a sample of plasmid pARIPA<sup>o</sup>, have been deposited with the American Type Culture Collection and accorded accession numbers 67585 and 40400, respectively.

#### E.1.H Full Length Tissue Plasminogen Activator cDNA

##### a.) Preparation of a Colony Library Containing N-terminal Tissue Plasminogen Activator Sequences

0.4 µg of the synthetic oligonucleotide 5' TTCTGAGCA-CAGGGCG 3' was used for priming 7.5 µg of gel fraction number 8 mRNA (supra) to prepare double stranded cDNA by standard procedures (65, 66). The cDNA was size fractionated on a 6 percent polyacrylamide gel. A size fraction greater than 300 base pairs (36 ng) was electroeluted. 5 ng cDNA was extended with deoxy(C) residues using terminal deoxycytidyl transferase (67) and annealed with 50 ng of the plasmid pBR322 (68) which had been similarly tailed with deoxy(G) residues at the Pst I site (67). The annealed mixture was then transformed into *E. coli* K12 strain 294. Approximately 1,500 transformants were obtained.

##### b.) Southern Hybridization of Human Genomic DNA

Since the cDNA priming reaction had been done using a synthetic fragment that hybridized 13 base pairs from the

5,753,486

19

N-terminal of clone pPA25E10, no convenient restriction fragment was available in this 29 base pair region (which includes the 16-mer sequence) for screening the cDNA clones. Therefore, it was necessary to isolate a human tissue plasminogen activator genomic clone in order to identify any primer extended cDNA clones containing N-terminal tissue plasminogen activator coding sequences.

The first step in this process involved establishing the fact that only a single homologous tissue plasminogen activator gene is present in human genomic DNA. To determine this, a Southern hybridization was performed. In this procedure (77), 5  $\mu$ g of high molecular weight human lymphocyte DNA (prepared as in 80) was digested to completion with various restriction endonucleases, electrophoresed on 1.0 percent agarose gels (81) and blotted to a nitrocellulose filter (77). A  $^{32}$ P-labelled DNA probe was prepared (76) from the 5' end of the cDNA insert of pPA25E10 (a 230 bp Hpa II-Rsa I fragment) and hybridized (82) with the nitrocellulose filter. 35 $\times 10^6$  counts per minute of the probe were hybridized for 40 hours and then washed as described (82). Two endonuclease digestion patterns provide only a single hybridizing DNA fragment: Bgl II (5.7 Kbp) and Pvu II (4.2 Kbp). Two hybridizing DNA fragments were observed with Hinc II (5.1 Kbp and 4.3 Kbp). Taken together, these data suggest the presence of only a single tissue plasminogen activator gene in the human genome, and that this gene contains at least one intervening sequence.

c). Screening of the Human  $\lambda$  Phage Library for Tissue Plasminogen Activator Genes.

The strategy used to identify  $\lambda$  phage recombinants carrying tissue plasminogen activator genes consisted in detecting nucleotide homology with a radioactive probe prepared from the tissue plasminogen activator clone pPA25E10. One million recombinant  $\lambda$  phage were plated out on DP 50 Sup F at a density of 10,000 pfu/15 cm plate, and nitrocellulose filter replicas were prepared for each plate by the method of Benton and Davis (78). A  $^{32}$ P-labelled DNA probe was prepared by standard procedures (83) from a 230 base pair Hpa II-Rsa I fragment located 34 base pairs from the 5' end of the plasmid pPA25E10. Each nitrocellulose filter was prehybridized at 42 $^{\circ}$  for 2 hours in 50 mM sodium phosphate (pH 6.5), 5 $\times$ SSC (77), 0.05 mg/ml sonicated salmon sperm DNA, 5 $\times$ Denhardt's solution (84), 50 percent formamide and then hybridized with 50 $\times 10^6$  counts per minute of the labelled probe in the same solution containing 10 percent sodium dextran sulfate (85). After an overnight incubation at 42 $^{\circ}$  C., the filters were washed 4 times at 50 $^{\circ}$  in 0.2 $\times$ SSC, 0.1 percent SDS for 30 minutes, once in 2 $\times$ SSC at room temperature and then exposed to Kodak XR-5 X-ray film with Dupont Cronex intensifying screens overnight. A total of 19 clones were obtained which hybridized with the probe. Phage DNA was prepared as previously described (86) from 6 recombinants.  $\lambda$  Clone C was selected for preparation of a Pvu II fragment for colony screening. 30  $\mu$ g of DNA was digested with Pvu II for 1 hour at 37 $^{\circ}$ , and electrophoresed on 1.0 percent agarose gels. A 4.2 Kilobase pair fragment previously shown to contain tissue plasminogen activator sequences was electrocloned and purified. A  $^{32}$ P-labelled probe was prepared by standard procedures (83) for colony hybridizations as described infra.

d.) Screening of Colony Library for 5' Tissue Plasminogen Activator Sequences.

The colonies were transferred from plates and grown on nitrocellulose filters and the DNA from each colony fixed to the filter by the Grunstein—Hogness procedure (69). A  $^{32}$ P-labelled probe was made by calf-thymus priming (83) a 4.2 kilobase pair Pvu II fragment from an isolated tissue

20

plasminogen activator  $\lambda$  genomic clone. Filters containing the 1,500 transformants were hybridized with 112 $\times 10^6$  cpm of  $^{32}$ P-genomic Pvu II fragment. Hybridization was for 16 hours using conditions described by Fritsch et. al (82). Filters were extensively washed and then exposed to Kodak XR-5 X-ray film with Dupont Lightning-Plus intensifying screens for 16–48 hours. Eighteen colonies clearly hybridized with the genomic probe. Plasmid DNA was isolated from each of these colonies and was bound to nitrocellulose filters and hybridized with the  $^{32}$ P-labelled synthetic oligonucleotide (16-mer) used for the original priming reaction. Of the 18 clones, seven hybridized with the kinased 16-mer. Upon sequence analysis after subcloning fragments into the m13 vector mp $^7$  (73), one clone (pPA17) was shown to contain the correct 5'N terminal region of tissue plasminogen activator, a signal leader sequence and an 84 bp 5' untranslated region. From the two clones pPA25E10 and pPA17 the complete nucleotide sequence FIG. 5 and restriction pattern (FIG. 4) of a full length tissue plasminogen activator clone were determined.

Bacterial clone *E. coli* (PPA17), as well as a sample of plasmid pPA17, have been deposited with the American Type Culture Collection and accorded accession numbers 67586 and 40402, respectively.

The native tissue plasminogen activator molecule has the potential to be stabilized by 17 disulfide bridges based on homology with other serine proteases. There are four potential N-glycosylation sites, three located in the "kringle" regions at asn $_{117}$ , asna $_{184}$ , asn $_{284}$  and one potential site in the light chain region, at ash $_{448}$ . Variations in the structure of the oligosaccharide ligands may be responsible for the different molecular forms (65,000 and 63,000 mol. wt. species).

E.1. I Direct Expression of Full Length Tissue Plasminogen Activator cDNA Clone in *E. coli*

A reconstruction of the entire coding sequence was possible employing the common HhaI restriction endonuclease site shared by both partial clones pPA17 and pPA25E10. A 55 bp Sau3AI-HhaI restriction fragment corresponding to amino acids 5–23 was isolated from the plasmid pPA17. The Sau3AI restriction site was located at codon four of the presumed mature coding sequence and was used to remove the signal peptide coding region. A 263 bp HhaI-NarI fragment (coding for amino acids 24–110) was also isolated from plasmid pPA25E10. Two synthetic deoxyoligonucleotides were designed which restore the codons for amino acids 1–4, incorporate an ATG translation initiation codon and create an EcoRI cohesive terminus. These three fragments were then ligated together to form a 338 bp fragment coding for amino acids 1–110. This fragment and a 1645 bp NarI-BglII fragment from pPA25E10 were then ligated between the EcoRI and BglII sites of the plasmid pLeIFAtrp103 (53) to give the expression plasmid pt-PATrp12. The cloned t-PA gene is transcribed under the control of a 300 bp fragment of the *E. coli* trp operon which contains the trp promoter, operator, and the Shine-Dalgarno sequence of the trp leader peptide but lacks the leader peptide ATG initiation codon (52).

A sample of plasmid pt-PATrp12 has been deposited with the American Type Culture Collection and accorded accession number 40404.

E.1.J Sequence Analysis

Sequence analysis was based on the Edman degradation. (83b) The sample was introduced into the cup of the Beckman 890B or 890C spinning cup sequencer. Polybrene<sup>TM</sup> (poly N,N,N $^1$ N $^1$ -tetramethyl-N-trimethylenhexamethylene diammonium diacetate) was used as a carrier in the cup. (63C) The sequencer was

5,753,486

21

modified with a cold trap and some program changes to reduce background peaks. The reagents were Beckman's sequence grade 0.1 molar Quadrol buffer, phenylisothiocyanate, and heptafluorobutyric acid.

The collected Edman cycles were manually converted to 2-anilino-5-thiazolinone derivatives. The 1-chlorobutane was dried under nitrogen. Then 1.0N HCl in water was added to the 2-anilino-5-thiazolinone and heated to 70° C. for 10 min to convert it into the 3-phenyl-2-thiohydantoin (PTH derivative). The PTH-amino-acid residue was then dissolved in 50 percent acetonitrile and water and injected into a reverse-phase high-pressure liquid chromatograph. Each PTH-amino acid was then identified by comparison to the retention times of a standard mixture of PTH-amino acids that was introduced into the conversion vial and treated the same way as a cycle from the sequencer.

#### E.1.K. Assays for Detection of Expression of Tissue Plasminogen Activator

##### 1. Direct Assay of Plasmin Formation

###### a. Theory

A sensitive assay for tissue plasminogen activator can be obtained by monitoring the tissue plasminogen activator catalyzed conversion of plasminogen to plasmin. Plasmin is an enzyme for which there are chromogenic substrate assays. These assays are based on the proteolytic cleavage of a tripeptide from a chromophoric group. The rate of cleavage is directly related to both the specificity and the concentration of the protease being tested. The basis of the assay is the determination of the amount of plasmin formed following incubation of the tissue plasminogen activator containing solution with a solution of plasminogen. The greater the amount of activator, the greater the amount of plasmin formed. Plasmin is measured by monitoring its cleavage of the chromogenic substrate S2251 (purchased from Kabi Group, Inc., Greenwich, Conn.).

###### b. Procedure

An aliquot of the sample is mixed with 0.10 ml of 0.7 mgs/ml plasminogen (in 0.05M Tris<sup>o</sup>HCl, pH 7.4, containing, 0.012M NaCl) and the volume adjusted to 0.15 ml. The mixture is incubated at 37° C. for 10 minutes. 0.35 ml of S2251 (1.0 mM solution in above buffer) is added, and the reaction continued for 30 minutes at 37° C. Glacial acetic acid (25  $\mu$ L) is added to terminate the reaction. The samples are centrifuged and the absorbance at 405 nm is measured. Quantitation of the amount of activity is obtained by comparison with a standard urokinase solution. Activity was recorded in Plough units, wherein 90,000 Plough units is equal to the activity exhibited by 1 mg of purified tissue plasminogen activator.

##### 2. Indirect Assay of Plasmin Formation

###### a. Theory

A sensitive assay for tissue plasminogen activator activity has been developed (87). The assay is based on determination of plasmin formation by measuring the extent of plasmin digestion of fibrin in an agar plate containing fibrin and plasminogen. Plasmin produces a clear lysis zone in the fibrin plate. The area of this lysis zone can be correlated to the amount of tissue plasminogen activator in the sample.

###### b. Procedure

Following the procedure of Granelli-Piperno and Reich (87), the plates were incubated 3.5 hours at 37° C. and lysis zones measured. Quantitation was obtained by comparison to a standard urokinase solution.

#### E.1.L. Detection of Tissue Plasminogen Activator Activity

##### 1. Bacterial Growth and Sample Preparation.

A colony of *E. coli* containing the plasmid (pARIPA<sup>o</sup>) was inoculated into a test tube containing 5 mL of LB growth

22

media containing 20  $\mu$ g/ml ampicillin. The cells were grown overnight at 37° C. An aliquot of this culture was diluted 1:100 into 300 ml of M9 media containing 20  $\mu$ g/ml ampicillin. The cells were grown in a shaker flask at 37° C. for four hours, with a resulting absorbance at 550 nm of 0.419. The tryptophan analog indole acrylic acid was added to a concentration of 30  $\mu$ g/ml. The cells were incubated 90 minutes, with a resulting absorbance at 550 nm of 0.628. The cells were harvested by centrifugation and resuspended in 0.8 ml of 0.01M Tris, pH 8.0, containing 0.01M EDTA. The resulting suspension was stirred rapidly at room temperature for 18 hours. The sample was centrifuged and the supernatant assayed for tissue plasminogen activator activity.

##### 2. Activity Detection.

Table 1 show the results of the activation of plasminogen by *E. coli* extracts when assayed. An activity is generated which is dependent on the presence of plasminogen. This activity is not affected by pre-immune serum of a rabbit but is markedly inhibited by antiserum which was raised against purified melanoma cell derived tissue plasminogen activator (88). This demonstrates that the *E. coli* extracts are producing a plasminogen activating activity which is inhibited by antibodies against the tissue plasminogen activator.

FIG. 7 shows the result of a fibrin plate assay for fibrinolytic activity. A standard amount of urokinase was added to the center row in concentrations, from left to right, of 0.24, 0.14, 0.10, 0.05 and 0.02 Plough Units. The bottom row is samples of natural tissue plasminogen activator, with the same amount of enzyme in each well. The wells contain, from left to right, tissue plasminogen activator, anti-plasminogen activator plus pre-immune serum, and tissue plasminogen activator plus tissue plasminogen activator antibodies. The wells in the top row each contain 8  $\mu$ l of the recombinant tissue plasminogen activator *E. coli* extracts. The first well is the extract alone, the second well has preimmune serum added, and the third well has the tissue plasminogen activator antibodies added. It is obvious that the preimmune serum does not affect natural or recombinant tissue plasminogen activator, and that tissue plasminogen activator antibodies inhibit the activity of natural as well as the *E. coli* extracts. Based on the urokinase standards, the extracts contain slightly less than 2.5 Plough units per ml. This compares favorably with the value obtained in Table 1 of 1.3 Plough units per ml.

Table 1 sets forth the results of assays performed as described above in E.1.K.1.b.:

TABLE 1

Plasminogen Activation by <i>E. coli</i> Extracts of Cultures Containing pARIPA			
Sample	A <sup>405</sup>	Percent Activity <sup>1</sup>	Calculated Plough Units/mL
Extract (with no plasminogen)	0.043	(0)	—
Extract	0.451	(100)	1.3
Extract plus preimmune serum	0.477	106	—
Extract plus anti t-PA antibodies	0.079	9	—

<sup>1</sup>Percent activity calculated by subtracting the blank (0.043) from the values obtained and dividing by the value obtained from the extract.

FIG. 10 represents the results of a fibrin plate assay performed with extracts from 10 L fermentation cultures of *E. coli* containing a tissue plasminogen activator expressing plasmid. The fibrinolytic activity of the tissue plasminogen activator containing extract is represented in FIG. 10 by Well

5,753,486

23

A. This fibrinolytic activity is inhibited by anti t-PA IgG (Well C) but not by preimmune IgG (Well B) or anti urokinase IgG (Well D) and no activity is seen from an extract prepared from cells containing as a control the leukocyte interferon plasmid pLeIFAtpr103 (Well H).

#### E.2 Production of tPA Using DHFR Protein with a Low Binding Affinity for MTX

##### E.2.A Vector Construction

The sequence encoding human tissue plasminogen activator (t-PA) is inserted into an expression plasmid containing a mutant DHFR with low binding affinity for MTX, described in copending application U.S. Ser. No. 459,151, filed Jan. 19, 1983 and now abandoned, corresponding to European Patent Application Publ. No. 73,656, and incorporated herein by reference, by the following procedure (see FIG. 11):

Three fragments from overlapping t-PA plasmids, pPA25E10, and pPA17, and the pt-PATp12 (supra) were prepared as follows: Plasmid pPA17 was digested with Dde I, filled in using Klenow DNA polymerase I, and subcut with Pst I; the approximately 200 bp fragment containing 5' terminal t-PA sequence thus generated was isolated. The second t-PA fragment was obtained by digesting pt-PATp12 with Pst I and Nar I and isolating the approximately 310 bp fragment. The third t-PA fragment was obtained by digesting pPA25E10 with Nar I and Bgl II and isolating the approximately 1645 bp fragment which contains, in addition to much of the t-PA coding region, some 3' non-translated sequences.

Plasmid pE342 which expresses HBV surface antigen (also referred to as pHBS348-E) has been described by Levinson et al. patent application Ser. No. 326,980, filed Dec. 3, 1981, now abandoned in favor of continuing application Ser. No. 603,529 filed Apr. 24, 1984, now U.S. Pat. No. 4,741,901, and corresponding to European Patent Application Publ. No. 73,656, and which is incorporated herein by reference. (Briefly, the origin of the Simian virus SV40 was isolated by digesting SV40 DNA with HindIII, and converting the HindIII ends to EcoRI ends by the addition of a converter (AGCTGAATTC). This DNA was cut with PvuII, and RI linkers added. Following digestion with EcoRI, the 348 base-pair fragment spanning the origin was isolated by polyacrylamide gel electrophoresis and electroelution, and cloned in pBR322. Expression plasmid pHBS348-E was constructed by cloning the 1986 base-pair fragment resulting from EcoRI and BglII digestion of HBV (*Animal Virus Genetics*, (Ch. 5) Acad. Press, New York (1980)) (which spans the gene encoding HBsAg) into the plasmid pML (Lusky et al., *Nature*, 293: 79 (1981) at the EcoRI and BamHI sites. (pML is a derivative of pBR322 which has a deletion eliminating sequences which are inhibitory to plasmid replication in monkey cells). The resulting plasmid (pRI-Bgl) was then linearized with EcoRI, and the 348 base-pair fragment representing the SV40 origin region was introduced into the EcoRI site of pRI-Bgl. The origin fragment can insert in either orientation. Since this fragment encodes both the early and late SV40 promoters in addition to the origin of replication, HBV genes could be expressed under the control of either promoter depending on this orientation (pHBS348-E representing HBs expressed under control of the early promoter). pE342 is modified by partially digesting with Eco RI, filling in the cleaved site using Klenow DNA polymerase I, and ligating the plasmid back together, thus removing the Eco RI site preceding the SV40 origin in pE342. The resulting plasmid, designated pE342ΔRI, is digested with Eco RI, filled in using Klenow DNA polymerase I, and subcut with Bam HI. After electro-

24

phoresing on acrylamide gel, the approximately 3500 bp fragment is electroeluted, phenol-chloroform extracted, and ethanol precipitated as above.

The thus prepared p342E 3500 bp vector, and above described t-PA fragments comprising approximately 2160 bp were ligated together using standard techniques. A plasmid containing the three t-PA encoding fragments in the proper orientation was isolated, characterized, and designated pE342-t-PA. This plasmid was digested with Sac II and treated with bacterial alkaline phosphatase (BRL). To provide the DHFR sequence (along with control sequences for its expression) an approximately 1700 bp fragment was generated by SacII digestion of pEHER. (pEHER is a plasmid expressing mutant DHFR described in U.S. Ser. No. 459,151 (supra). This fragment was ligated into the pE342-t-PA plasmid to create pETPAER400, a plasmid which is analogous to pEHER except that the HBsAg coding region has been replaced by the cDNA sequences from t-PA.

E.2.B Expression and Amplification of the t-PA Sequence pETPAER400 (pETPER) was transfected into both dhfr<sup>-</sup> CHO-DUX B11 cells and DHFR<sup>+</sup> CHO-K1 (ATCC CCL61) cells by the method of Graham and Van der Eb (supra). Transformed dhfr<sup>-</sup> cells were selected by growth in glycine, hypoxanthine and thymidine deficient medium. Transformed DHFR<sup>+</sup> cells were selected by growth in  $\geq 100$  nM MTX. Colonies which arose on the appropriate selection medium were isolated using cloning rings and propagated in the same medium to several generations.

For amplification cells from the colonies are split into media containing  $5 \times 10^4$ ,  $10^5$ ,  $2.5 \times 10^5$ ,  $5 \times 10^5$ , and  $10^6$  nM MTX and passaged several times. Cells are plated at very low ( $10^2$ – $10^3$  cells/plate) cell densities in 10 cm dishes and the resulting colonies are isolated.

##### E.2.C Assay Methods

Expression of t-PA in the transfected amplified colonies may conveniently be assayed by the methods similar to those set forth in E.1.K.1.b (supra).

Coamplification of DHFR and t-PA sequences is assayed by isolating DNA from confluent monolayers of amplified colonies as follows: Confluent monolayers in 150 mm plates are washed with 50 ml sterile PBS and lysed by the addition of 5 ml of 0.1 percent SDS, 0.4M CaCl<sub>2</sub>, 0.1M EDTA, pH 8. After 5–10 minutes, the mixture is removed, phenol extracted, chloroform extracted, and ethanol precipitated. The DNA is resuspended in 1 ml (per 150 mm plate) 10 mM Tris-HCl pH 8, 1 mM EDTA (TE), RNase added to 0.1 mg/ml, and the solution incubated 30 minutes at 37°. SDS is then added to 0.1 percent and pronase (Sigma) is added to 0.5 mg/ml. After 3–16 hours incubation at 37°, the solution is again phenol extracted, chloroform extracted, and ethanol precipitated. The DNA pellet is resuspended in 0.5 ml water and digested with restriction enzymes. Approximately 5–10 µg of digested DNA is electrophoresed in an agarose gel [1 percent agarose in Tris—acetate buffer (40 mM Tris, 1 mM EDTA, made to pH 8.2 with acetic acid)]; Crouse, et al. *J. Biol. Chem.*, 257: 7887 (1982)). After bromphenol blue dye had migrated 2/3 of the way down the gel, the gel is removed and stained with ethidium bromide. After visualizing the DNA with ultraviolet light, the DNA is transferred from the gel to nitrocellulose filters according to the procedure of Southern (*J. Mol. Biol.* 98: 503. (1975)). The filters are then hybridized with a nick translated probe made from the 1700 bp SacII fragment of pEHER (prepared and hybridized as described above), or from the approximately 1970 bp Bgl II fragment of pETPER.

E.3 Production of t-PA in Conjunction with Wild Type DHFR Protein



5,753,486

25

## E.3.A. Vector Construction

In a manner analogous to that used in the construction of pETPER, plasmid pETPFR was constructed containing the DNA sequence encoding wild type DHFR. The construction was as described in Example E.2. A except that in place of plasmid pEHER as a source for the DHFR protein gene sequence, the plasmid pE342.HBV.E400.D22 described in copending Genentech Docket No. 100/92, U.S. Ser. No. 459,152, filed 19 Jan. 1983, now U.S. Pat. No. 4,713,339, corresponding to European Patent Application Publ. No. 117,058, incorporated herein by reference, was substituted. The plasmid pE342.HBV.E400.D22 is the same as pEHER except for a single base pair difference between wild type and mutant DHFR. Thus the resulting plasmid pETPFR is analogous in every way to pETPER except that the DNA sequence encoding for wild type DHFR is substituted for that of the mutant.

A sample of plasmid pETPFR has been deposited with the American Type Culture Collection and accorded accession number 40403.

## E.3.B Expression of t-PA sequence

pETPFR was used to transfect DHFR deficient CHO cells (Urlaub and Chasin (*supra*)) using the calcium phosphate precipitation method of Graham and Van der Eb. Twenty-one colonies which arose on the selective medium (-HGT) were assayed by detection of plasmin formation as assessed by the digestion of fibrin in an agar plate containing fibrin and plasminogen, described by Granelli-Piperno, et al. *J. Exp. Med.*, 148: 223 (1978).

Four of the most strongly positive clones were then assayed quantitatively for plasmin formation on a per cell basis according to the method set forth in E.1.K.1.b.

Upon such quantitative determination it was found that the four clones tested exhibited the same or comparable t-PA secretion into the medium, determined as units/cell/day. Subclones were prepared by transferring inocula from two of the clones into separate plates containing -HGT medium. Two of the resulting subclones, 18B and 1 were used for further analysis.

## E.3.C Amplification and t-PA Production Levels

The above subclones were plated at  $2 \times 10^5$  cells per 100 mm plates in 50 nM MTX to promote amplification. Those cells which survived, when assayed as described above, gave, in all cases, about 10 times the unamplified amount of tissue plasminogen activator activity. Two of these clones were chosen for further study and were named 1-15 and 18B-9.

Subclone 1-15 was further amplified by seeding  $2 \times 10^5$  cells in 100 mm plates containing 500 nM MTX. Assay of the cells thus amplified yielded a further increase (of about 3 fold) in t-PA production; when assayed quantitatively by the method of C.I.C. levels were in the range of  $7 \times 10^{-4}$  units/cell/day. A portion of these amplified cells was then transferred and maintained in the presence of 10,000 nM MTX. Subclones of 1-15, and 18B-9 were further tested after being maintained for approximately 1-2 months at the conditions specified in Table 3.

TABLE 3

Cell Line	Growth Conditions	ng t-PA/cell/day*
1-15 <sub>500</sub>	500 nM MTX	$28.5 \times 10^{-3}$
1-15 <sub>500</sub>	500 nM MTX	$26.0 \times 10^{-3}$
1-15 <sub>500</sub>	(-HGT medium, no MTX)	$8.3 \times 10^{-3}$
1-15 <sub>500</sub>	(-HGT medium, no MTX)	$18.0 \times 10^{-3}$
1-15 <sub>10,000</sub>	10 $\mu$ M MTX	$29.3 \times 10^{-3}$

26

TABLE 3-continued

Cell Line	Growth Conditions	ng t-PA/cell/day*
1-15 <sub>10,000</sub>	10 $\mu$ M MTX	$49.0 \times 10^{-3}$
18B-9	50 nM MTX	$14.3 \times 10^{-3}$
18B-9	50 nM MTX	$14.4 \times 10^{-3}$
18B-9	(-HGT medium, no MTX)	$14.3 \times 10^{-3}$
18B-9	(-HGT medium, no MTX)	$14.4 \times 10^{-3}$
1	(-HGT medium, no MTX)	$1.0 \times 10^{-3}$
1	(-HGT medium, no MTX)	$0.7 \times 10^{-3}$

\*t-PA in the culture medium was assayed quantitatively in a radioimmunoassay as follows: Purified t-PA and purified iodinated tracer t-PA derived from melanoma cells were diluted serially to include concentration of 12.5 to 400 ng/ml in a buffer containing phosphate buffered saline, pH 7.3, 0.5 percent bovine serum albumin, 0.01 percent Tween 80, and 0.02 percent NaN<sub>3</sub>. Appropriate dilutions of medium samples to be assayed were added to the radioactively labelled tracer proteins. The antigens were allowed to incubate overnight at room temperature in the presence of a 1:10,000 dilution of the IgG fraction of a rabbit anti-t-PA antiserum. Antibody-antigen complex was precipitated by adsorption to goat anti-rabbit IgG Immuno beads (BioRad) for two hours at room temperature. The beads were cleared by the addition of saline diluent followed by centrifugation for ten minutes at  $2000 \times g$  at 4° Celsius. Supernatants were discarded and the radioactivity in the precipitates was monitored. Concentrations were assigned by comparison with the reference standard.

The cell lines are as follows: Cell line "1" is an unamplified clone from the original set of four. "1-15<sub>500</sub>" is an amplified subclone of cell line "1" which was amplified initially in 50 nM MTX to give 1-15 and then transferred for further amplification into 500 nM MTX. 1-5<sub>10,000</sub> is subclone of 1-15<sub>500</sub> which has been further amplified in the presence of 10,000 nM MTX. Cell line 18B-9 is a subclone of one of the original four detected which had been amplified on 50 nM MTX.

A sample of CHO cell line 1-15<sub>500</sub> has been deposited with the American Type Culture Collection and accorded accession number CRL 9606.

All of the amplified cells show increased levels of t-PA production over that exhibited by the unamplified cell culture. Even the unamplified culture produces amounts of t-PA greater than 0.5 pg/cell/day; amplification results in levels approaching 50 pg/cell/day.

## F. Pharmaceutical Compositions

The compounds of the present invention can be formulated according to known methods to prepare pharmaceutically useful compositions, whereby the human tissue plasminogen activator product hereof is combined in admixture with a pharmaceutically acceptable carrier vehicle. Suitable vehicles and their formulation, inclusive of other human proteins, e.g. human serum albumin, are described for example in Remington's *Pharmaceutical Sciences* by E. W. Martin, which is hereby incorporated by reference. Such compositions will contain an effective amount of the protein hereof together with a suitable amount of vehicle in order to prepare pharmaceutically acceptable compositions suitable for effective administration to the host.

For example, the human tissue plasminogen activator hereof may be parenterally administered to subjects suffering from cardiovascular diseases or conditions. Dosage and dose rate may parallel that currently in use in clinical investigations of other cardiovascular, thrombolytic agents, e.g., about 440 IU/kg. body weight as an intravenous priming dose followed by a continuous intravenous infusion at about 440 IU/kg./hr. for 12 hours, in patients suffering from pulmonary embolism.

As one example of an appropriate dosage form for essentially homogeneous human tissue plasminogen activator in parenteral form applicable herein, a vial containing 25000 IU tissue plasminogen activator activity, 25 mg. mannitol

5,753,486

27

and 45 mg. NaCl, may be reconstituted with 5 ml. sterile water for injection and mixed with a suitable volume of 0.9 percent Sodium Chloride Injection or 5 percent Dextrose Injection for intravenous administration. ps G. Detailed Description of Recombinant Human t-PA

The structure of the particular embodiment of human t-PA prepared in the examples herein has been studied in some detail, both by elucidation of the gene coding sequence and by protein biochemistry techniques. The current understanding of the protein structure is illustrated in FIG. 12.

It has also previously been demonstrated by Collen and coworkers (88) that two chain human t-PA is formed by proteolytic cleavage of the single chain molecule into two polypeptides connected by disulfide bonding. The present work permits the conclusion that the heavy chain (30882 mol. wt.) is derived from the NH<sub>2</sub> terminal part and the light chain (28126 mol. wt.) comprises the COOH-terminal region. N-terminal sequencing of the two chain molecule suggests that the two chain form is generated by cleavage of a single arginyl-isoleucine bond (FIG. 12; arrow depicted).

The primary structure of a portion of the heavy chain region of human t-PA (FIG. 12) reveals a high degree of sequence homology with the "kringle" regions of plasminogen (89) and prothrombin (40, 41). "Kringles" region refers to a characteristic triple disulfide structure originally discovered in the "pro"-fragment of prothrombin, first described in detail by Magnusson et al. (91, 92). From the primary sequence of t-PA, two so-called "kringle" regions, of 82 amino acids each, that share a high degree of homology with the 5 "kringle" regions of plasminogen are apparent. The remaining N-terminal 91 amino acids share little homology to the conventional "kringle" region. One can speculate however that this region may also assume a structure containing multiple disulfide bonds as 11 additional cysteine residues are found here.

The catalytic site of the light chain of human t-PA, the so-called serine protease region, as in other serine enzymes, is most likely formed by the histidine<sub>322</sub>, aspartic<sub>371</sub> and serine<sub>478</sub> residues. Furthermore, the amino acid sequences surrounding these residues are very homologous to corresponding parts of other serine proteases such as trypsin, prothrombin and plasminogen.

Notwithstanding that reference has been made to particular preferred embodiments, it will be understood that the present invention is not to be construed as limited to such, rather to the lawful scope of the appended claims.

#### Bibliography

1. U.S. Pat. No. 3,355,361.
2. U.S. Pat. No. 3,926,727.
3. U.S. Pat. No. 4,029,767.
4. U.S. Pat. No. 4,258,030.
5. U.S. Pat. No. 4,271,150.
6. European Patent Application Publ. No. 0037687.
7. Rijken, D. C., "Plasminogen Activator from Human Tissue." Krips Repro Meppel, 1980.
8. U.S. Pat. No. 3,555,000.
9. U.S. Pat. No. 3,998,947.
10. U.S. Pat. No. 4,245,051.
11. European Patent Application Publ. No. 0023860.
12. U.S. Pat. No. 4,083,961.
13. U.S. Pat. No. 4,177,262.
14. U.S. Pat. No. 3,082,612.
15. Wallen, P., *Proc. Serono Symp.* 9, 91 (1977).
16. Thorsen, S., et al., *Thrombos. Diathes. haemorrh.* 28, 65 (1972).
17. Collen, *Thrombos. Haemostas.* 43, 77 (1980).

28

18. Wiman et al., *Nature* 272, 549 (1978).
19. European Patent Application Publ. No. 0041766.
20. Weimar, W., et al., *The Lancet* Vol. II, No. 8254, p. 1018 (1981).
21. British Patent Application Publ. No. 2007676A.
22. Wetzel, *American Scientist* 68, 664 (1980).
23. *Microbiology*, 2d Ed., Harper and Row Publications, Inc., Hagerstown, Md. (1973), esp. pp. 1122 et seq.
24. *Scientific American* 245, 106 (1981).
25. British Patent Application Publ. No. 2055382A.
26. German Offenlegungsschrift 2644432.
27. Chang et al., *Nature* 275, 617 (1978).
28. Itakura et al., *Science* 198, 1056 (1979).
29. Goeddel et al., *Nucleic Acids Research* 8, 4057 (1980).
30. European Patent Application Publ. No. 0036776.
31. Siebenlist et al., *Cell* 20, 269 (1980).
32. Stinchcomb et al., *Nature* 282, 39 (1979).
33. Kingsman et al., *Gene* 7, 141 (1979).
34. Tschumper et al., *Gene* 10, 157 (1980).
35. Mortimer et al., *Microbiological Reviews* 44, 519 (1980).
36. Miozzari et al., *Journal of Bacteriology* 134, 48 (1978).
37. Jones, *Genetics* 85, 23 (1977).
38. Hitzeman, et al., *J. Biol. Chem.* 255, 12073 (1980).
39. Hess et al., *J. Adv. Enzyme Regul.* 7, 149 (1968).
40. Holland et al., *Biochemistry* 17, 4900 (1978).
41. Bostian et al., *Proc. Natl. Acad. Sci. (USA)* 77, 4504 (1980).
42. *The Molecular Biology of Yeast* (Aug. 11-18, 1981), Cold Spring Harbor Laboratory, Cold Spring Harbor, N.Y.
43. Chambon, *Ann. Rev. Biochemistry*, 44, 613 (1975).
44. *Tissue Culture*, Academic Press, Kruse and Patterson eds. (1973).
45. Gluzman, *Cell* 23, 175 (1981).
46. Bolivar et al., *Gene* 2, 95 (1977).
47. Lusky et al., *Nature* 293, 79 (1981).
48. Gluzman et al., Cold Spring Harbor Symp. Quant. Biol. 44, 293 (1980).
49. Fiers et al., *Nature* 273, 113 (1978).
50. Reddy et al., *Science* 200, 494 (1978).
51. Crea et al., *Nucleic Acids Research* 8, 2331 (1980).
52. Goeddel et al., *Nature* 287, 411 (1980).
53. Gray et al., *Nature* 295, 503 (1982).
54. Oppermann et al., *Virology* 108, 47 (1981).
55. Ward et al., *J. Virol.* 9, 61 (1972).
56. Aviv et al., *Proc. Natl. Acad. Sci. (USA)* 69, 1408 (1972).
57. Lehrach et al., *Biochemistry* 16, 4743 (1977).
58. Lynch et al., *Virology* 98, 251 (1979).
59. Lodish, *Ann. Rev. of Biochem.* 45, 40 (1976).
60. Pelham et al., *Eur. J. Biochem.* 43, 247 (1974).
61. Blobel, et al., *J. Cell Biology* 67, 852 (1975).
62. Shields et al., *J. Biol. Chemistry* 253, 3753 (1978).
63. Laemmli, *Nature* 227, 680 (1970).
64. Bonner et al., *Eur. J. Biochem.* 46, 83 (1974).
65. Goeddel et al., *Nature* 281, 544 (1979).
66. Wickens et al., *J. Biol. Chem.* 253, 2483 (1978).
67. Chang et al., *Nature* 275, 617 (1978).
68. Bolivar et al., *Gene* 2, 95 (1977).
69. Grunstein et al., *Proc. Natl. Acad. Sci. U.S.A.* 72, 3961 (1975).
70. Hanahan et al., *Gene* 10, 63 (1980).
71. Birnboim et al., *Nucleic Acids Res.* 7, 1513 (1979).
72. Smith, *Methods Enzymol.* 65, 499 (1980).
73. Messing et al., *Nucleic Acids Res.* 9, 309 (1981).
74. Maxam et al., *Methods in Enzymol.* 65, 499 (1980).
75. Crea et al., *Proc. Natl. Acad. Sci.* 75, 5765 (1978).
76. Lawn et al., *Cell* 15, 1157 (1978).

5,753,486

29

77. Southern. *J. Mol. Biol.* 98. 503 (1975).  
 78. Benton et al., *Science* 196, 180 (1977).  
 79. McGrath and Levinson, *Nature* 295, 423 (1982).  
 80. Blin et al., *Nucleic Acid Res.* 3, 2303 (1976).  
 81. Lawn et al., *Science* 212, 1159 (1981).  
 82. Fritsch et al., *Cell* 19, 959 (1980).  
 83. Taylor et al., *Biochim. Biophys. Acta* 442, 324 (1976).  
 83b. Edman et al., *European J. Biochem.* 1, 80 (1967).  
 84. Denhardt, *Biochem. Biophys. Res. Comm.* 23, 641 (1966).  
 85. Wahl et al., *Proc. Natl. Acad. Sci. (USA)* 76, 3683 (1979).  
 86. Davis et al., *Advanced Bacterial Genetics*, Cold Spring Harbor Laboratory, New York (1980).  
 87. Granelli-Piperno et al., *J. Exp. Med.* 148, 223 (1978).  
 88. Rijken et al., *J. Biol. Chem.* 256, 7035 (1981).  
 89. Sottrup-Jensen et al., *Progress in Chemical Fibrinolysis and Thrombolysis*, Vol. 3, Raven Press, New York p. 191 (1978).  
 90. Sottrup-Jensen et al., *Proc. Natl. Acad. Sci. (USA)* 72, 2577 (1975).  
 91. Magnussen et al., *Proteolysis and Physiological Regulation*, Ribbons et al., Eds., Academic Press, New York, p. 203 (1976).  
 92. Magnussen et al., *Proteases and Biological Control*, 25 Cold Spring Harbor Laboratory, New York, p. 123 (1975).

30

93. Miller. *Experiments in Molecular Genetics*, p. 431-3. Cold Spring Harbor Lab., Cold Spring Harbor, N.Y. (1972).  
 94. Reich, E., *Proteases and Biological Control*, (Ibid) p. 333-341.  
 95. Matsuo, O., et al., *Throm. Haemostasis* 45 225 (1981).  
 96. Koringe, C., et al., *Throm. Haemostasis* 46 561, 662 (1981).  
 97. Hoylaerts, M., et al., *J. Biol. Chem.* 257 2912 (1982).  
 98. Koringe, C., et al., *Thromb. Haemostasis* 46 685 (1981).

We claim:

1. Human tissue plasminogen activator as produced by recombinant expression of DNA encoding said tissue plasminogen activator in transformed Chinese Hamster Ovary (CHO) cells.  
 2. Human tissue plasminogen activator according to claim 1 having the amino acid sequence 1 to 527 set forth in FIGS. 5A, 5B and 5C hereof.  
 3. A composition comprising a therapeutically effective amount of human tissue plasminogen activator according to claim 1 in admixture with a pharmaceutically acceptable carrier.

\* \* \* \* \*