

**EXHIBIT 3**  
**PART 3 OF 3**

**APPENDIX A**

Do Not Print  
SSA

CNN Interactive

APPENDIX A

http://cnn.com/index.html

What's new in **Politics** today? [Click here](#)

**For All The**



VIDEO ON DEMAND AUDIO ON DEMAND CUSTOMIZE YOUR FEED

June 3, 1998 -- Updated 10:49 a.m. EDT (1449 GMT)

SUMMARY SEARCH CNN GO

- MAIN PAGE
- WORLD
  - US
  - US POLITICS
  - POLITICS
  - WEATHER
  - BUSINESS
  - SPORTS
  - TECH
  - ENTERTAINMENT
  - HEALTH
  - OPINION
  - INDEX



**60 dead, hundreds injured in high-speed German train crash**

At least 60 people were reported to have been killed and 200 others injured when a high-speed InterCity Express (ICE) passenger train struck a car that had crashed onto the tracks near the northern town of Cella Wednesday morning, officials at the scene said.

(FULL STORY)

**Gray Davis wins California Democratic gubernatorial primary**

**Lewinsky hires new lawyers**

**Police say Hartman's wife told friends about shooting**

**Deadly storms return to East**



**Shuttle TV antenna knocked out**  
Live: NASA-TV

APPENDIX: A

## CNN-MAIN PAGE

```

1 <html>
2 <head>
3 <title>CNN Interactive</title>
4 <script language="Javascript" src="/virtual/1998/code/cnn.js">
5 </script>
6 <link rel="stylesheet" href="/virtual/1998/code/cnn.css" type="text/css">
7 </head>
8 <body bgcolor="white" link="#3333cc" vlink="#777777"
9 onload="if(parent.frames.length!=0)top.location=http://cnn.com';">
10 <a name="top"></a>
11 <table width=600 cellpadding="0" cellspacing="0" border="0">
12 <tr><td colspan="3"><table border="0" width="600" cellspacing="0"
13 cellpadding="0"><tr><td width="120"><A
14 HREF="/event.ng/Type=click&RunID=11075&ProfileID=469&AdID=5902&GroupID=1&
15 FamilyID=328&TagValues=434.435.586.598.606.629.644.645&Redirect=http:%2F%2Ffallp
16 olitics.com" target="_top"></a></td><td
18 width="8" align=right><a href="/ads/e.market/"></a></td><td width="468"><A
21 HREF="/event.ng/Type=click&RunID=11294&ProfileID=34&AdID=6188&GroupID=15&
22 FamilyID=849&TagValues=249.434.435.586.594.598.606.629&Redirect=http:%2F%2Fww
23 w.pagenet.com%2F" target="_top"></a></td></tr></table><hr noshade width="600"
25 size="1" align="LEFT">
26 </td></tr><tr valign=top><td width="125">
27 <a href="/index.html"></a><br>
29 <!--TOP-LEVEL NAVIGATION-->
30 <table border="0" width="125" cellspacing="0" cellpadding="2" bgcolor="#CCCCCCFF">
31 <tr>
32 <td bgcolor="#333399"><b><font face="Helvetica, Arial,sans-serif"
34 size="1">&nbsp;<a href="/index.html"><font color="#FFFFFF">MAIN
35 PAGE</font></a></font></b></td>
36 </tr>
37 <tr>
38 <td><b><font face="Helvetica, Arial,sans-serif" size="1">&nbsp;<a
39 href="/WORLD/"><font color="#000000">WORLD</font></a></font></b></td>
40 </tr>
41 <tr>
42 <td><b><font face="Helvetica, Arial,sans-serif" size="1">&nbsp;<a href="/US/"><font

```

```

43 color="#000000">U.S.</font></a></font></b></td>
44 </tr>
45 <tr>
46 <td><b><font face="Helvetica, Arial,sans-serif" size="1">&nbsp;<a
47 href="/LOCAL/"><font color="#000000">U.S. LOCAL</font></a></font></b></td>
48 </tr>
49 <tr>
50 <td><b><font face="Helvetica, Arial,sans-serif" size="1">&nbsp;<a
51 href="/allpolitics/"><font color="#000000">POLITICS</font></a></font></b></td>
52 </tr>
53 <tr>
54 <td><b><font face="Helvetica, Arial,sans-serif" size="1">&nbsp;<a
55 href="/WEATHER/"><font color="#000000">WEATHER</font></a></font></b></td>
56 </tr>
57 <tr>
58 <td><b><font face="Helvetica, Arial,sans-serif" size="1">&nbsp;<a
59 href="/cnnfn/"><font color="#000000">BUSINESS</font></a></font></b></td>
60 </tr>
61 <tr>
62 <td><b><font face="Helvetica, Arial,sans-serif" size="1">&nbsp;<a
63 href="/cnnsi/"><font color="#000000">SPORTS</font></a></font></b></td>
64 </tr>
65 <tr>
66 <td><b><font face="Helvetica, Arial,sans-serif" size="1">&nbsp;<a
67 href="/TECH/"><font color="#000000">SCI-TECH</font></a></font></b></td>
68 </tr>
69 <tr>
70 <td><b><font face="Helvetica, Arial,sans-serif" size="1">&nbsp;<a
71 href="/SHOWBIZ/"><font
72 color="#000000">ENTERTAINMENT</font></a></font></b></td>
73 </tr>
74 <tr>
75 <td><b><font face="Helvetica, Arial,sans-serif" size="1">&nbsp;<a
76 href="/TRAVEL/"><font color="#000000">TRAVEL</font></a></font></b></td>
77 </tr>
78 <tr>
79 <td><b><font face="Helvetica, Arial,sans-serif" size="1">&nbsp;<a
80 href="/HEALTH/"><font color="#000000">HEALTH</font></a></font></b></td>
81 </tr>
82 <tr>
83 <td><b><font face="Helvetica, Arial,sans-serif" size="1">&nbsp;<a
84 href="/STYLE/"><font color="#000000">STYLE</font></a></font></b></td>
85 </tr>
86 <tr>
87 <td><b><font face="Helvetica, Arial,sans-serif" size="1">&nbsp;<a
88 href="/SPECIALS/"><font color="#000000">IN-DEPTH</font></a></font></b></td>

```

```
89 </tr>
90 <tr>
91 <td><hr size=1 noshade></td>
92 </tr>
93 <tr>
94 <td><font face="Helvetica, Arial,sans-serif" size="1">&nbsp;<a
95 href="http://cnn.com/CustomNews/"><font color="#000000">custom
96 news</font></a></font></td>
97 </tr>
98 <tr>
99 <td><font face="Helvetica, Arial,sans-serif" size="1">&nbsp;<a
100 href="/QUICKNEWS/"><font color="#000000">news summary</font></a></font></td>
101 </tr>
102 <tr>
103 <td><font face="Helvetica, Arial,sans-serif" size="1">&nbsp;<a
104 href="/almanac/daily/"><font color="#000000">daily almanac</font></a></font></td>
105 </tr>
106 <tr>
107 <td><font face="Helvetica, Arial,sans-serif" size="1">&nbsp;<a
108 href="/TRANSCRIPTS/"><font color="#000000">on-air
109 transcripts</font></a></font><br><br></td>
110 </tr>
111 </table>
112 <!--/TOP-LEVEL NAVIGATION -->
```

**APPENDIX B**

*Do not Print  
SM*

CNN - Weather

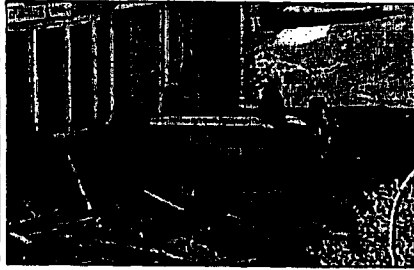
APPENDIX: B

http://cnn.com/WEATHER/



**CNN** interactive **weather** mainpage

- MAINPAGE
- World
- US
- US NEWS
- POLITICS
- WEATHER
- BUSINESS
- SPORTS
- SCIENCE
- ENTERTAINMENT
- TRAVEL
- HEALTH
- STYLE
- INDEPTH
- performance
- new technology
- entertainment
- online in print
- CNN WEB SITES



**Deadly storms return to East**

Rescue crews went house to house searching for victims Wednesday after powerful storms and possibly tornadoes slammed into the East Coast for the second time this week. At least two people were killed in Pennsylvania. There also was extensive damage in Maryland.

(FULL STORY)

**FOUR-DAY FORECASTS FOR 6,100 CITIES WORLDWIDE**

- u.s. cities**
- Atlanta
  - Boston
  - Chicago
  - Dallas
  - Denver
  - Houston
  - Los Angeles
  - Miami
  - Minneapolis
  - New York
  - Phoenix
  - Portland
  - San Francisco
  - Seattle
  - Washington

- world cities**
- Africa
  - Asia
  - Australia & New Zealand
  - Canada
  - Caribbean
  - Central America
  - Europe
  - Mexico
  - Middle East
  - South America

allpolitics **CNN**

SVENSKA EN ESPAÑOL em português

- MORE SERVICES**
- Video archive
  - audio archive
  - email alerts
  - desktop updates
  - podcasts
  - rss feeds

**DISCUSSION**

- mailing lists
- chat
- forums

**SITE GUIDES**

- help
- contact
- privacy

**Carolinas stormy; Texas gets heat wave**

Thunderstorms were lining up over the Carolinas and into the muggy Tennessee Valley early Wednesday as the southern Plains got ready for more blistering heat. Stormy weather was shaping up across the Pacific Northwest.

(FULL STORY)

**ALLERGY REPORT**

**SPECIALS**

- Hot air balloons
- Hot air balloons
- Hot air balloons

**STAY INFORMED DURING WEATHER EMERGENCIES**

Get the latest weather information from NOAA's National Weather Service

**Tornado victims get help**



**APPENDIX: B****CNN WEATHER**

```

1 <HTML>
2 <HEAD>
3 <TITLE>CNN - Weather</TITLE>
4 <LINK REL="stylesheet" HREF="/virtual/1998/code/cnn.css" TYPE="text/css">
5 <SCRIPT LANGUAGE="javascript" SRC="/virtual/weather/vector.js">
6 </SCRIPT>
7 </HEAD>
8 <BODY BGCOLOR="WHITE" TEXT="#000000" LINK="#3333CC"
9 VLINK="#666666">
10 <a name="top"></a>
11 <table width=600 cellpadding="0" cellspacing="0" border="0">
12 <tr valign="top"><td colspan="3">
13 <table border="0" width="600" cellspacing="0" cellpadding="0"><tr valign="TOP"><td
14 width="120"><A
15 HREF="/event.ng/Type=click&RunID=11075&ProfileID=469&AdID=5904&GroupID=1&
16 FamilyID=328&TagValues=434.435.586.598.606.629.644.645&Redirect=http:%2F%2Fcin
17 .com%2FSHOWBIZ" target="_top"></a></td><td width="8" align="right"><a
20 href="/ads/e.market/"></a></td><td width="468"><A
22 HREF="/event.ng/Type=click&RunID=9909&ProfileID=48&AdID=5942&GroupID=24&F
23 amilyID=328&TagValues=307.434.435.586.594.598.606.629&Redirect=http:%2F%2Fwww
24 .roughcut.com" target="_top"></a></td></tr></table>
27 <hr noshade width="600" size="1" align="LEFT">
28 </td></tr><tr valign=top><td width="125">
29 <a href="/index.html"></a><br>
31 <!--TOP-LEVEL NAVIGATION-->
32 <table border="0" width="125" cellspacing="0" cellpadding="2" bgcolor="#CCCCFF">
33 <tr>
34 <td><b><font face="Helvetica, Arial,sans-serif" size="1">&nbsp;<a
35 href="/index.html"><font color="#000000">MAIN PAGE</font></a></font></b></td>
36 </tr>
37 <tr>
38 <td><b><font face="Helvetica, Arial,sans-serif" size="1">&nbsp;<a
39 href="/WORLD/"><font color="#000000">WORLD</font></a></font></b></td>
40 </tr>
41 <tr>

```

```

42 <td><b><font face="Helvetica, Arial,sans-serif" size="1">&nbsp;<a href="/US/"><font
43 color="#000000">U.S.</font></a></font></b></td>
44 </tr>
45 <tr>
46 <td><b><font face="Helvetica, Arial,sans-serif" size="1">&nbsp;<a
47 href="/LOCAL/"><font color="#000000">U.S. LOCAL</font></a></font></b></td>
48 </tr>
49 <tr>
50 <td><b><font face="Helvetica, Arial,sans-serif" size="1">&nbsp;<a
51 href="/allpolitics/"><font color="#000000">POLITICS</font></a></font></b></td>
52 </tr>
53 <tr>
54 <td bgcolor="#333399"><b><font face="Helvetica, Arial,sans-serif"
56 size="1">&nbsp;<a href="/WEATHER/"><font
57 color="#FFFFFF">WEATHER</font></a></font></b></td>
58 </tr>
59 <tr>
60 <td bgcolor="#9999FF"><b><font face="Helvetica, Arial,sans-serif" size="1">&nbsp;<a
61 href="/WEATHER/images.html"><font color="#000000">weather
62 maps</font></a></font></b></td>
63 </tr>
64 <tr>
65 <td bgcolor="#9999FF"><b><font face="Helvetica, Arial,sans-serif" size="1">&nbsp;<a
66 href="/WEATHER/storm.center/"><font color="#000000">storm
67 center</font></a></font></b></td>
68 </tr>
69 <tr>
70 <td bgcolor="#9999FF"><b><font face="Helvetica, Arial,sans-serif" size="1">&nbsp;<a
71 href="/WEATHER/allergy/"><font color="#000000">allergy
72 report</font></a></font></b></td>
73 </tr>
74 <tr>
75 <td><b><font face="Helvetica, Arial,sans-serif" size="1">&nbsp;<a
76 href="/cnnfn/"><font color="#000000">BUSINESS</font></a></font></b></td>
77 </tr>
78 <tr>
79 <td><b><font face="Helvetica, Arial,sans-serif" size="1">&nbsp;<a
80 href="/cnnsi/"><font color="#000000">SPORTS</font></a></font></b></td>
81 </tr>
82 <tr>
83 <td><b><font face="Helvetica, Arial,sans-serif" size="1">&nbsp;<a
84 href="/TECH/"><font color="#000000">SCI-TECH</font></a></font></b></td>
85 </tr>
86 <tr>
87 <td><b><font face="Helvetica, Arial,sans-serif" size="1">&nbsp;<a

```

```

88 href="/SHOWBIZ/"><font
89 color="#000000">ENTERTAINMENT</font></a></font></b></td>
90 </tr>
91 <tr>
92 <td><b><font face="Helvetica, Arial,sans-serif" size="1">&nbsp;<a
93 href="/TRAVEL/"><font color="#000000">TRAVEL</font></a></font></b></td>
94 </tr>
95 <tr>
96 <td><b><font face="Helvetica, Arial,sans-serif" size="1">&nbsp;<a
97 href="/HEALTH/"><font color="#000000">HEALTH</font></a></font></b></td>
98 </tr>
99 <tr>
100 <td><b><font face="Helvetica, Arial,sans-serif" size="1">&nbsp;<a
101 href="/STYLE/"><font color="#000000">STYLE</font></a></font></b></td>
102 </tr>
103 <tr>
104 <td><b><font face="Helvetica, Arial,sans-serif" size="1">&nbsp;<a
105 href="/SPECIALS/"><font color="#000000">IN-DEPTH</font></a></font></b></td>
106 </tr>
107 <tr>
108 <td><hr size=1 noshade></td>
109 </tr>
110 <tr>
111 <td><font face="Helvetica, Arial,sans-serif" size="1">&nbsp;<a
112 href="http://cnn.com/CustomNews/"><font color="#000000">custom
113 news</font></a></font></td>
114 </tr>
115 <tr>
116 <td><font face="Helvetica, Arial,sans-serif" size="1">&nbsp;<a
117 href="/QUICKNEWS/"><font color="#000000">news summary</font></a></font></td>
118 </tr>
119 <tr>
120 <td><font face="Helvetica, Arial,sans-serif" size="1">&nbsp;<a
121 href="/almanac/daily/"><font color="#000000">daily almanac</font></a></font></td>
122 </tr>
123 <tr>
124 <td><font face="Helvetica, Arial,sans-serif" size="1">&nbsp;<a
125 href="/TRANSCRIPTS/"><font color="#000000">on-air
126 transcripts</font></a></font><br><br></td>
127 </tr>
128 </table>
129 <!--/TOP-LEVEL NAVIGATION -->

```

**APPENDIX C**

Do not Print  
SSW



AltaVista: Simple Query computer graphics

http://www.altavista.digital.com/c...&q=computer+graphics&search=Search

APPENDIX: C

Computer Graphics and Interactive Media Home Page. Welcome to the Computer Graphics and Interactive Media Page. We are a research group in Bellcore's...

Last modified 12-Mar-98 - page size 783 bytes - In English [Translate]

**8. 3D Animation Grafik Computer Graphics Web-Design Layout Film Video HTML Multim**

[URL: www.cmr-sc.com/]

Computergrafic Meinhard Ritter und SCARABAEUS COMPUTER GRAFIK André Dokmanov. Professionelle 2D/3D-Konstruktionen und Animationen für Film und Video...

Last modified 20-Feb-98 - page size 6K

**9. UCD Computer Graphics Lab Home Page**

[URL: muldoon.cpic.ucdavis.edu/]

UC Davis Visualization and Computer Graphics. People. Research. Publications. Notes. Gallery. Courses. Facilities. Join Us. Source Code....

Last modified 14-Mar-98 - page size 3K - In English [ Translate ]

**10. 6.837--Computer Graphics SGI locations**

[URL: graphics.lcs.mit.edu/6.837/96/sgis.html]

Current public SGI machines: 1-142 10 SGI's. 2-225 13 SGI's. 11-113 3 SGI's. 11-116 3 SGI's. 37-312 4 SGI's. 66-080 10 SGI's. W20-575 25 SGI's. Rotch...

Last modified 9-Sep-96 - page size 1K - In English [Translate]

Pages: [1](#) [2](#) [3](#) [4](#) [5](#) [6](#) [7](#) [8](#) [9](#) [10](#) [11](#) [12](#) [13](#) [14](#) [15](#) [16](#) [17](#) [18](#) [19](#) [20](#) [[>>](#)]

word count: computer: 24087421; graphics: 38023009

Search | Home | About | Privacy | Contact | Site Map | Terms of Service | Digital  
©1998 Digital Equipment Corporation | All rights reserved. | Privacy  
About Altavista | Search | Advanced Search | Advertise | Feedback

APPENDIX: C

## ALTA VISTA

Page 1 of .....

```

1 <html><head>
2 <title>AltaVista: Simple Query computer graphics</title>
3 </head><body bgcolor=#ffffff text=#000000 link=#000099 vlink=#663366 alink=#ff0000>
4 <MAP NAME="hdr">
5 <AREA SHAPE=RECT COORDS="378,33,420,51" HREF="/" ALT=Home>
6 <AREA SHAPE=RECT COORDS="424,33,456,52" HREF="/av/content/zones.html"
7 ALT=Zones>

159 <b>10. </b><a href="http://graphics.lcs.mit.edu/6.837/f96/sgis.html"><b>6.837--Computer
160 Graphics SGI locations</b></a><br>
161 <font face=arial size=-2>[<b>URL:</b>
162 graphics.lcs.mit.edu/6.837/f96/sgis.html]</font><br>
163 Current public SGI machines: 1-142 10 SGI's. 2-225 13 SGI's. 11-113 3 SGI's. 11-116 3
164 SGI's. 37-312 4 SGI's. 66-080 10 SGI's. W20-575 25 SGI's. Rotch...<br><font face=arial
165 size=-2>Last modified 9-Sep-96 - page size 1K - in English [ <a
166 href="http://babelfish.altavista.digital.com/cgi-bin/translate?urltext=http%3a%2f%2fgraphic
167 s%2elcs%2emit%2eedu%2f6%2e837%2ff96%2fsgis%2html&language=en">Translate</a>
168 ]</font><P>
169 </font><font face=arial size=-1>Pages: <b>1</b> <a
170 href="/cgi-bin/query?pg=q&q=computer+graphics&stq=10&c9k">2</a>
171 <a href="/cgi-bin/query?pg=q&q=computer+graphics&stq=20&c9k">3</a>
172 <a href="/cgi-bin/query?pg=q&q=computer+graphics&stq=30&c9k">4</a>
173 <a href="/cgi-bin/query?pg=q&q=computer+graphics&stq=40&c9k">5</a>
174 <a href="/cgi-bin/query?pg=q&q=computer+graphics&stq=50&c9k">6</a>
175 <a href="/cgi-bin/query?pg=q&q=computer+graphics&stq=60&c9k">7</a>
176 <a href="/cgi-bin/query?pg=q&q=computer+graphics&stq=70&c9k">8</a>
177 <a href="/cgi-bin/query?pg=q&q=computer+graphics&stq=80&c9k">9</a>
178 <a href="/cgi-bin/query?pg=q&q=computer+graphics&stq=90&c9k">10</a>
179 <a href="/cgi-bin/query?pg=q&q=computer+graphics&stq=100&c9k">11</a>
180 <a href="/cgi-bin/query?pg=q&q=computer+graphics&stq=110&c9k">12</a>
181 <a href="/cgi-bin/query?pg=q&q=computer+graphics&stq=120&c9k">13</a>
182 <a href="/cgi-bin/query?pg=q&q=computer+graphics&stq=130&c9k">14</a>
183 <a href="/cgi-bin/query?pg=q&q=computer+graphics&stq=140&c9k">15</a>
184 <a href="/cgi-bin/query?pg=q&q=computer+graphics&stq=150&c9k">16</a>
185 <a href="/cgi-bin/query?pg=q&q=computer+graphics&stq=160&c9k">17</a>
186 <a href="/cgi-bin/query?pg=q&q=computer+graphics&stq=170&c9k">18</a>
187 <a href="/cgi-bin/query?pg=q&q=computer+graphics&stq=180&c9k">19</a>
188 <a href="/cgi-bin/query?pg=q&q=computer+graphics&stq=190&c9k">20</a>
<a

```

**APPENDIX D**

*Do not print  
5/6/14*



AltaVista: Simple Query computer graphics

http://www.altavista.digital.com/c...g=q&q=computer+graphics&stq=80&c9k

APPENDIX: D

**AltaVista** A DIGITAL Internet Service Search Zones Services Help Feedback

Search the Web for documents in  Search  
Advanced  
Browse by  
AltaVista  
AltaVista  
Search

---

About **44,652,431** matches were found.

**81. F.V.C.C. - Printing, Copying, Graphics, Computer Services**  
 [URL: www.fv-chamber.com/biz/printgraph.html]  
 Printing, Copying, Graphics, Computer Services. Kinko's Bob Bowie & Kirk Hoover 18709 Brookhurst Street Fountain Valley, CA 92708 Phone: (714)...  
 Last modified 4-Dec-97 - page size 1K - in English [Translate]

**82. Computer Graphics**  
 [URL: the-duke.duq-duke.duq.edu/notes/week\_7/COMPAN\_G.htm]  
 Computer Graphics & Animation. Computer animation is the use of computers to create animations. There are a few different ways to make computer...  
 Last modified 18-Aug-96 - page size 3K - in English [Translate]

**83. Techimage - 3D Computer Graphics**  
 [URL: www.techimage.co.uk/noframes/houdini/L1\_14.html]  
 Expandable Foundation: Future specialised tools will fit into the Houdini foundation seamlessly. Techimage Ltd., 25 Lodersfield, Lechlade,...  
 Last modified 10-Apr-97 - page size 1K - in English [Translate]

**84. CS 790a -- Computer Graphics -- Class 26**  
 [URL: www.cs.unr.edu/~fredh/class/790a/class/class26.html]  
 CS 790a -- Computer Graphics -- Class 26. Question-Answer session. Senior Project Presentation. Mr. Bull. Last Modified: 2/14/97 fredh@cs.unr.edu  
 Last modified 21-Mar-97 - page size 369 bytes - in English [Translate]

**85. TIME INK - Computer Graphics Home Page**  
 [URL: timeink.com/default.html]  
 Viewing this page requires a browser capable of displaying frames.  
 Last modified 8-Dec-97 - page size 435 bytes - in English [Translate]

**86. SFTW301 - Computer Graphics**  
 [URL: www.umac.mo/ft/sftw301.html]  
 SFTW301 - Computer Graphics. Conceptual model for the interactive computer graphics programmer. Coordinate systems. Graphical input and output....  
 Last modified 24-Sep-97 - page size 800 bytes - in English [Translate]

**87. ARC 104. INTRODUCTION TO COMPUTER GRAPHICS**  
 [URL: www2.sunydutchess.edu/Credit/Courses/ARC104.html]  
 ARCHITECTURAL TECHNOLOGY. NOTE: The College reserves the right to retain certain selected works of students enrolled in its architectural design courses...  
 Last modified 4-Nov-97 - page size 1K - in English [Translate]


**88. Computer Graphics FAQ's**

**Amazon.com suggests**  
 Books of the Day  
 Titles about computer gra...

**Zones**  
 Entertainment  
 Finance  
 Health  
 Travel

**Services**  
 Free Email  
 Translation

**International**  
 Our Search Network  
 Search in Chinese  
 Search in Japanese  
 Search in Korean



AltaVista: Simple Query computer graphics

http://www.altavista.digital.com/c...g=q&q=computer+graphics&stq=80&c9k

APPENDIX: L

[URL: [www.bergen.org/AAST/ComputerAnimation/He...\\_Raytrace2.html](http://www.bergen.org/AAST/ComputerAnimation/He..._Raytrace2.html)]  
 Raytracing FAQ - Part 2. This is part 2 of the comp.graphics.rendering.raytra ing Frequently Asked Questions list. The latest version of the FAQ is...  
 Last modified 9-Dec-96 - page size 48K - in English [ [Translate](#) ]

**89. Bibliography on computer graphics and vision**  
 [URL: [wheat.uwaterloo.ca/bibliography/Graphics/Contrib.html](http://wheat.uwaterloo.ca/bibliography/Graphics/Contrib.html)]  
 Bibliography on computer graphics and vision. This bibliography is a part of the Computer Science Bibliography Collection.  
 Last modified 31-Mar-98 - page size 6K - in English [ [Translate](#) ]

**90. CSE328 FUNDAMENTALS OF COMPUTER GRAPHICS**  
 [URL: [www.cs.sunysb.edu/~theo/328/course.html](http://www.cs.sunysb.edu/~theo/328/course.html)]  
 CSE328: FUNDAMENTALS OF COMPUTER GRAPHICS. Monday, Friday 12:40-2:00pm Room Life Sciences 030 (it may change soon)  
 Instructor: T. Pavlidis,...  
 Last modified 31-Mar-98 - page size 5K - in English [ [Translate](#) ]

Pages: [[<<](#)] [1](#) [2](#) [3](#) [4](#) [5](#) [6](#) [7](#) [8](#) [9](#) [10](#) [11](#) [12](#) [13](#) [14](#) [15](#) [16](#) [17](#) [18](#) [19](#) [20](#) \_\_\_\_

word count: computer: 24087421; graphics: 38023009



**APPENDIX: D****ALTA VISTA**

Page 9 of.....

```

1 <html><head>
2 <title>AltaVista: Simple Query computer graphics</title>
3 </head><body bgcolor=#ffffff text=#000000 link=#000099 vlink=#663366 alink=#ff0000>
4 <MAP NAME="hdr">
5 <AREA SHAPE=RECT COORDS="378,33,420,51" HREF="/" ALT=Home>
6 <AREA SHAPE=RECT COORDS="424,33,456,52" HREF="/av/content/zones.html"
7 ALT=Zones>
8 <AREA SHAPE=RECT COORDS="462,33,507,52" HREF="/av/content/services.html"

174 CSE328: FUNDAMENTALS OF COMPUTER GRAPHICS. Monday, Friday
175 12:40-2:00pm Room Life Sciences 030 (it may change soon) Instructor: T.
176 Pavlidis,...<br><font face=arial size=-2>Last modified 31-Mar-98 - page size 5K - in
177 English [ <a
178 href="http://babelfish.altavista.digital.com/cgi-bin/translate?urltext=http%3a%2f%2fwww%
179 2ecs%2esunysb%2edu%2f%7etheo%2f328%2fcourse%2html&language=en">Translate</
180 a > ]</font><P>
181 </font><font face=arial size=-1>Pages: <a
182 href="/cgi-bin/query?pg=q&q=computer+graphics&stq=70&c9k">[<b>&lt;&lt;</b>]</a>
183 <a href="/cgi-bin/query?pg=q&q=computer+graphics&stq=0&c9k">1</a>
184 <a href="/cgi-bin/query?pg=q&q=computer+graphics&stq=10&c9k">2</a>
185 <a href="/cgi-bin/query?pg=q&q=computer+graphics&stq=20&c9k">3</a>
186 <a href="/cgi-bin/query?pg=q&q=computer+graphics&stq=30&c9k">4</a>
187 <a href="/cgi-bin/query?pg=q&q=computer+graphics&stq=40&c9k">5</a>
188 <a href="/cgi-bin/query?pg=q&q=computer+graphics&stq=50&c9k">6</a>
189 <a href="/cgi-bin/query?pg=q&q=computer+graphics&stq=60&c9k">7</a>
190 <a href="/cgi-bin/query?pg=q&q=computer+graphics&stq=70&c9k">8</a>
191 <b>9</b> <a
192 href="/cgi-bin/query?pg=q&q=computer+graphics&stq=90&c9k">10</a>
193 <a href="/cgi-bin/query?pg=q&q=computer+graphics&stq=100&c9k">11</a>
194 <a href="/cgi-bin/query?pg=q&q=computer+graphics&stq=110&c9k">12</a>
195 <a href="/cgi-bin/query?pg=q&q=computer+graphics&stq=120&c9k">13</a>
196 <a href="/cgi-bin/query?pg=q&q=computer+graphics&stq=130&c9k">14</a>
197 <a href="/cgi-bin/query?pg=q&q=computer+graphics&stq=140&c9k">15</a>
198 <a href="/cgi-bin/query?pg=q&q=computer+graphics&stq=150&c9k">16</a>
199 <a href="/cgi-bin/query?pg=q&q=computer+graphics&stq=160&c9k">17</a>
200 <a href="/cgi-bin/query?pg=q&q=computer+graphics&stq=170&c9k">18</a>
201 <a href="/cgi-bin/query?pg=q&q=computer+graphics&stq=180&c9k">19</a>
202 <a href="/cgi-bin/query?pg=q&q=computer+graphics&stq=190&c9k">20</a>
<a

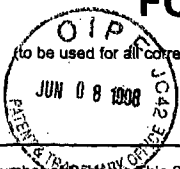
```

G02772

Please type a plus sign (+) inside this box:

Approved for use through 9/30/00. OMB 0851-0031  
 Patent and Trademark Office: U.S. DEPARTMENT OF COMMERCE

Under the Paperwork Reduction Act of 1995, no persons are required to respond to a collection of information unless it displays a valid OMB control number.

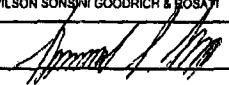
<h1>TRANSMITTAL FORM</h1> <p>(to be used for all correspondence after initial filing)</p> 	Application Number	08/727,085	
	Filing Date	October 8, 1996	
	First Named Inventor	Gilbert Borman	
	Group Art Unit	2772	
	Examiner Name	S. Hong	
Total Number of Pages in This Submission	32 36	Attorney Docket Number	18041.701

ENCLOSURES

<input checked="" type="checkbox"/> Fee Transmittal Form	Assignment Papers (for an Application)
<input checked="" type="checkbox"/> Fees Attached	Drawing(s)
<input checked="" type="checkbox"/> Amendment/Response	Licensing-related Papers
<input type="checkbox"/> After Final	Petition Routing Slip (PTO/SB/69) and Accompanying Petition
<input type="checkbox"/> Affidavits/declarations	To Convert a Provisional Application
<input checked="" type="checkbox"/> Extension of Time Request	Power of Attorney, Revocation, Change of Corresp. Address
<input type="checkbox"/> Express Abandonment Request	Terminal Disclaimer
<input type="checkbox"/> Information Disclosure Statement	Small Entity Statement
<input type="checkbox"/> Certified Copy of Priority Document(s)	Request for Refund
<input type="checkbox"/> Response to Missing Parts under 37 CFR 1.52 or 1.53	After Allowance Communication to Group
Remarks	Appendices A-D

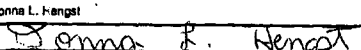
RECEIVED  
 JUN 11 AM 10:11  
 GROUP 2100

SIGNATURE OF APPLICANT, ATTORNEY, OR AGENT

Firm or individual Name	WILSON SONSINI GOODRICH & ROSATI	
Signature		Reg. No. 38,754
Date	June 4, 1998	

CERTIFICATE OF MAILING

I hereby certify that this correspondence is being deposited with the United States Postal Service as first class mail in an envelope addressed to:  
 Assistant Commissioner for Patents, Washington, D.C. 20231 on this date:

Typed or printed name	Donna L. Hengst
Signature	
Date	June 4, 1998

Burden Hour Statement: This form is estimated to take 0.2 hours to complete. Time will vary depending upon the needs of the individual case. Any comments on the amount of time you are required to complete this form should be sent to the Chief Information Officer, Patent and Trademark Office, Washington, DC 20231. DO NOT SEND FEES OR COMPLETED FORMS TO THIS ADDRESS. SEND TO: Assistant Commissioner for Patents, Washington, DC 20231.

PTO/SB/17 (12-97)

Approved for use through 9/30/00. OMB 0851-0032

Patent and Trademark Office: U.S. DEPARTMENT OF COMMERCE

Under the Paperwork Reduction Act of 1995, no persons are required to respond to a collection of information unless it displays a valid OMB control number.

<b>FEE TRANSMITTAL</b>		<b>Complete if Known</b>																																																																																																																																																																																													
Note: Effective October 1, 1997, OMB 0851-0032 Patent fees are subject to annual revision.		<b>Application Number</b>	08/727,085																																																																																																																																																																																												
		<b>Filing Date</b>	October 8, 1996																																																																																																																																																																																												
		<b>First Named Inventor</b>	Gilbert Boman																																																																																																																																																																																												
		<b>Group Art Unit</b>	2772																																																																																																																																																																																												
		<b>Examiner Name</b>	S. Hong																																																																																																																																																																																												
		<b>Attorney Docket Number</b>	18041.701																																																																																																																																																																																												
<b>TOTAL AMOUNT OF PAYMENT (\$)</b>		\$55.00																																																																																																																																																																																													
METHOD OF PAYMENT (check one)		FEE CALCULATION (continued)																																																																																																																																																																																													
<b>Deposit Account Number</b>	23-2415 ( Docket No. 18041.701)	<b>ADDITIONAL FEES</b> <table border="1" style="width:100%; border-collapse: collapse;"> <thead> <tr> <th>Large Entity Code</th> <th>Large Entity Fee (\$)</th> <th>Small Entity Code</th> <th>Small Entity Fee (\$)</th> <th>Fee Description</th> <th>Fee Paid</th> </tr> </thead> <tbody> <tr><td>105</td><td>130</td><td>205</td><td>65</td><td>Surcharge - late filing fee or oath</td><td></td></tr> <tr><td>127</td><td>50</td><td>227</td><td>25</td><td>Surcharge - late provisional filing fee or cover sheet</td><td></td></tr> <tr><td>139</td><td>130</td><td>139</td><td>130</td><td>Non-English specification</td><td></td></tr> <tr><td>147</td><td>2,520</td><td>147</td><td>2,520</td><td>For filing a request for reexamination</td><td></td></tr> <tr><td>112</td><td>920*</td><td>112</td><td>920*</td><td>Requesting publication of SIR prior to Examiner action</td><td></td></tr> <tr><td>113</td><td>1,840*</td><td>113</td><td>1,840*</td><td>Requesting publication of SIR after Examiner action</td><td></td></tr> <tr><td>115</td><td>110</td><td>215</td><td>55</td><td>Extension for reply within first month</td><td></td></tr> <tr><td>116</td><td>400</td><td>216</td><td>200</td><td>Extension for reply within second month</td><td></td></tr> <tr><td>117</td><td>950</td><td>217</td><td>475</td><td>Extension for reply within third month</td><td></td></tr> <tr><td>118</td><td>1,510</td><td>218</td><td>755</td><td>Extension for reply within fourth month</td><td></td></tr> <tr><td>128</td><td>2,060</td><td>228</td><td>1,030</td><td>Extension for reply within fifth month</td><td></td></tr> <tr><td>119</td><td>310</td><td>219</td><td>155</td><td>Notice of Appeal</td><td></td></tr> <tr><td>120</td><td>310</td><td>220</td><td>155</td><td>Filing a brief in support of an appeal</td><td></td></tr> <tr><td>121</td><td>270</td><td>221</td><td>135</td><td>Request for oral hearing</td><td></td></tr> <tr><td>138</td><td>1,510</td><td>138</td><td>1,510</td><td>Petition to institute a public use proceeding</td><td></td></tr> <tr><td>140</td><td>110</td><td>240</td><td>55</td><td>Petition to revive - unavoidable</td><td></td></tr> <tr><td>141</td><td>1,320</td><td>241</td><td>660</td><td>Petition to revive - unintentional</td><td></td></tr> <tr><td>142</td><td>1,320</td><td>242</td><td>660</td><td>Utility issue fee (or reissue)</td><td></td></tr> <tr><td>143</td><td>450</td><td>243</td><td>225</td><td>Design issue fee</td><td></td></tr> <tr><td>144</td><td>670</td><td>244</td><td>335</td><td>Plant issue fee</td><td></td></tr> <tr><td>122</td><td>130</td><td>122</td><td>130</td><td>Petitions to the Commissioner</td><td></td></tr> <tr><td>123</td><td>50</td><td>123</td><td>50</td><td>Petitions related to provisional applications</td><td></td></tr> <tr><td>126</td><td>240</td><td>126</td><td>240</td><td>Submission of Information Disclosure Stmt</td><td></td></tr> <tr><td>581</td><td>40</td><td>581</td><td>40</td><td>Recording each patent assignment per property (times number of properties)</td><td></td></tr> <tr><td>146</td><td>790</td><td>246</td><td>395</td><td>Filing a submission after final rejection (37 CFR 1.129(a))</td><td></td></tr> <tr><td>149</td><td>790</td><td>249</td><td>395</td><td>For each additional invention to be examined (37 CFR 1.129(b))</td><td></td></tr> <tr><td colspan="5">Other fee (specify)</td><td></td></tr> <tr><td colspan="5">Other fee (specify)</td><td></td></tr> <tr> <td colspan="5" style="text-align: right;"><b>* Reduced by Basic Filing Fee Paid</b></td> <td style="text-align: right;"><b>SUBTOTAL (3) (\$)</b></td> </tr> <tr> <td colspan="5"></td> <td style="text-align: right;">55.00</td> </tr> </tbody> </table>				Large Entity Code	Large Entity Fee (\$)	Small Entity Code	Small Entity Fee (\$)	Fee Description	Fee Paid	105	130	205	65	Surcharge - late filing fee or oath		127	50	227	25	Surcharge - late provisional filing fee or cover sheet		139	130	139	130	Non-English specification		147	2,520	147	2,520	For filing a request for reexamination		112	920*	112	920*	Requesting publication of SIR prior to Examiner action		113	1,840*	113	1,840*	Requesting publication of SIR after Examiner action		115	110	215	55	Extension for reply within first month		116	400	216	200	Extension for reply within second month		117	950	217	475	Extension for reply within third month		118	1,510	218	755	Extension for reply within fourth month		128	2,060	228	1,030	Extension for reply within fifth month		119	310	219	155	Notice of Appeal		120	310	220	155	Filing a brief in support of an appeal		121	270	221	135	Request for oral hearing		138	1,510	138	1,510	Petition to institute a public use proceeding		140	110	240	55	Petition to revive - unavoidable		141	1,320	241	660	Petition to revive - unintentional		142	1,320	242	660	Utility issue fee (or reissue)		143	450	243	225	Design issue fee		144	670	244	335	Plant issue fee		122	130	122	130	Petitions to the Commissioner		123	50	123	50	Petitions related to provisional applications		126	240	126	240	Submission of Information Disclosure Stmt		581	40	581	40	Recording each patent assignment per property (times number of properties)		146	790	246	395	Filing a submission after final rejection (37 CFR 1.129(a))		149	790	249	395	For each additional invention to be examined (37 CFR 1.129(b))		Other fee (specify)						Other fee (specify)						<b>* Reduced by Basic Filing Fee Paid</b>					<b>SUBTOTAL (3) (\$)</b>						55.00
Large Entity Code	Large Entity Fee (\$)					Small Entity Code	Small Entity Fee (\$)	Fee Description	Fee Paid																																																																																																																																																																																						
105	130	205	65	Surcharge - late filing fee or oath																																																																																																																																																																																											
127	50	227	25	Surcharge - late provisional filing fee or cover sheet																																																																																																																																																																																											
139	130	139	130	Non-English specification																																																																																																																																																																																											
147	2,520	147	2,520	For filing a request for reexamination																																																																																																																																																																																											
112	920*	112	920*	Requesting publication of SIR prior to Examiner action																																																																																																																																																																																											
113	1,840*	113	1,840*	Requesting publication of SIR after Examiner action																																																																																																																																																																																											
115	110	215	55	Extension for reply within first month																																																																																																																																																																																											
116	400	216	200	Extension for reply within second month																																																																																																																																																																																											
117	950	217	475	Extension for reply within third month																																																																																																																																																																																											
118	1,510	218	755	Extension for reply within fourth month																																																																																																																																																																																											
128	2,060	228	1,030	Extension for reply within fifth month																																																																																																																																																																																											
119	310	219	155	Notice of Appeal																																																																																																																																																																																											
120	310	220	155	Filing a brief in support of an appeal																																																																																																																																																																																											
121	270	221	135	Request for oral hearing																																																																																																																																																																																											
138	1,510	138	1,510	Petition to institute a public use proceeding																																																																																																																																																																																											
140	110	240	55	Petition to revive - unavoidable																																																																																																																																																																																											
141	1,320	241	660	Petition to revive - unintentional																																																																																																																																																																																											
142	1,320	242	660	Utility issue fee (or reissue)																																																																																																																																																																																											
143	450	243	225	Design issue fee																																																																																																																																																																																											
144	670	244	335	Plant issue fee																																																																																																																																																																																											
122	130	122	130	Petitions to the Commissioner																																																																																																																																																																																											
123	50	123	50	Petitions related to provisional applications																																																																																																																																																																																											
126	240	126	240	Submission of Information Disclosure Stmt																																																																																																																																																																																											
581	40	581	40	Recording each patent assignment per property (times number of properties)																																																																																																																																																																																											
146	790	246	395	Filing a submission after final rejection (37 CFR 1.129(a))																																																																																																																																																																																											
149	790	249	395	For each additional invention to be examined (37 CFR 1.129(b))																																																																																																																																																																																											
Other fee (specify)																																																																																																																																																																																															
Other fee (specify)																																																																																																																																																																																															
<b>* Reduced by Basic Filing Fee Paid</b>					<b>SUBTOTAL (3) (\$)</b>																																																																																																																																																																																										
					55.00																																																																																																																																																																																										
<b>Deposit Account Name</b>	Wilson Sonsini Goodrich & Rosati	<table border="1" style="width:100%; border-collapse: collapse;"> <thead> <tr> <th>Large Entity Code</th> <th>Large Entity Fee (\$)</th> <th>Small Entity Code</th> <th>Small Entity Fee (\$)</th> <th>Fee Description</th> <th>Fee Paid</th> </tr> </thead> <tbody> <tr><td>101</td><td>790</td><td>201</td><td>395</td><td>Utility filing fee</td><td></td></tr> <tr><td>106</td><td>330</td><td>206</td><td>165</td><td>Design filing fee</td><td></td></tr> <tr><td>107</td><td>540</td><td>207</td><td>270</td><td>Plant filing fee</td><td></td></tr> <tr><td>108</td><td>790</td><td>208</td><td>395</td><td>Reissue filing fee</td><td></td></tr> <tr><td>114</td><td>150</td><td>214</td><td>75</td><td>Provisional filing fee</td><td></td></tr> <tr> <td colspan="5" style="text-align: right;"><b>SUBTOTAL (1) (\$)</b></td> <td></td> </tr> </tbody> </table>				Large Entity Code	Large Entity Fee (\$)	Small Entity Code	Small Entity Fee (\$)	Fee Description	Fee Paid	101	790	201	395	Utility filing fee		106	330	206	165	Design filing fee		107	540	207	270	Plant filing fee		108	790	208	395	Reissue filing fee		114	150	214	75	Provisional filing fee		<b>SUBTOTAL (1) (\$)</b>																																																																																																																																																					
Large Entity Code	Large Entity Fee (\$)					Small Entity Code	Small Entity Fee (\$)	Fee Description	Fee Paid																																																																																																																																																																																						
101	790	201	395	Utility filing fee																																																																																																																																																																																											
106	330	206	165	Design filing fee																																																																																																																																																																																											
107	540	207	270	Plant filing fee																																																																																																																																																																																											
108	790	208	395	Reissue filing fee																																																																																																																																																																																											
114	150	214	75	Provisional filing fee																																																																																																																																																																																											
<b>SUBTOTAL (1) (\$)</b>																																																																																																																																																																																															
<input checked="" type="checkbox"/> Charge Any Additional Fee Required Under 37 CFR 1.18 and 1.17	<input type="checkbox"/> Charge the Issue Fee Set in 37 CFR 1.18 at the Mailing of the Notice of Allowance																																																																																																																																																																																														
<input type="checkbox"/> Payment Enclosed:																																																																																																																																																																																															
<input type="checkbox"/> Check		<input type="checkbox"/> Money Order																																																																																																																																																																																													
		<input type="checkbox"/> Other																																																																																																																																																																																													
FEE CALCULATION																																																																																																																																																																																															
<b>1. FILING FEE</b>																																																																																																																																																																																															
<table border="1" style="width:100%; border-collapse: collapse;"> <thead> <tr> <th>Large Entity Code</th> <th>Large Entity Fee (\$)</th> <th>Small Entity Code</th> <th>Small Entity Fee (\$)</th> <th>Fee Description</th> <th>Fee Paid</th> </tr> </thead> <tbody> <tr><td>101</td><td>790</td><td>201</td><td>395</td><td>Utility filing fee</td><td></td></tr> <tr><td>106</td><td>330</td><td>206</td><td>165</td><td>Design filing fee</td><td></td></tr> <tr><td>107</td><td>540</td><td>207</td><td>270</td><td>Plant filing fee</td><td></td></tr> <tr><td>108</td><td>790</td><td>208</td><td>395</td><td>Reissue filing fee</td><td></td></tr> <tr><td>114</td><td>150</td><td>214</td><td>75</td><td>Provisional filing fee</td><td></td></tr> <tr> <td colspan="5" style="text-align: right;"><b>SUBTOTAL (1) (\$)</b></td> <td></td> </tr> </tbody> </table>						Large Entity Code	Large Entity Fee (\$)	Small Entity Code	Small Entity Fee (\$)	Fee Description	Fee Paid	101	790	201	395	Utility filing fee		106	330	206	165	Design filing fee		107	540	207	270	Plant filing fee		108	790	208	395	Reissue filing fee		114	150	214	75	Provisional filing fee		<b>SUBTOTAL (1) (\$)</b>																																																																																																																																																					
Large Entity Code	Large Entity Fee (\$)	Small Entity Code	Small Entity Fee (\$)	Fee Description	Fee Paid																																																																																																																																																																																										
101	790	201	395	Utility filing fee																																																																																																																																																																																											
106	330	206	165	Design filing fee																																																																																																																																																																																											
107	540	207	270	Plant filing fee																																																																																																																																																																																											
108	790	208	395	Reissue filing fee																																																																																																																																																																																											
114	150	214	75	Provisional filing fee																																																																																																																																																																																											
<b>SUBTOTAL (1) (\$)</b>																																																																																																																																																																																															
<b>2. CLAIMS</b>																																																																																																																																																																																															
<table border="1" style="width:100%; border-collapse: collapse;"> <thead> <tr> <th>Large Entity Code</th> <th>Large Entity Fee (\$)</th> <th>Small Entity Code</th> <th>Small Entity Fee (\$)</th> <th>Fee Description</th> <th>Fee Paid</th> </tr> </thead> <tbody> <tr><td>103</td><td>22</td><td>203</td><td>11</td><td>Claims in excess of 20</td><td></td></tr> <tr><td>102</td><td>82</td><td>202</td><td>41</td><td>Independent claims in excess of 3</td><td></td></tr> <tr><td>104</td><td>270</td><td>204</td><td>135</td><td>Multiple dependent claim</td><td></td></tr> <tr><td>109</td><td>82</td><td>209</td><td>41</td><td>Reissue independent claims over original patent</td><td></td></tr> <tr><td>110</td><td>22</td><td>210</td><td>11</td><td>Reissue claims in excess of 20 and over original patent</td><td></td></tr> <tr> <td colspan="5" style="text-align: right;"><b>SUBTOTAL (2) (\$)</b></td> <td></td> </tr> </tbody> </table>						Large Entity Code	Large Entity Fee (\$)	Small Entity Code	Small Entity Fee (\$)	Fee Description	Fee Paid	103	22	203	11	Claims in excess of 20		102	82	202	41	Independent claims in excess of 3		104	270	204	135	Multiple dependent claim		109	82	209	41	Reissue independent claims over original patent		110	22	210	11	Reissue claims in excess of 20 and over original patent		<b>SUBTOTAL (2) (\$)</b>																																																																																																																																																					
Large Entity Code	Large Entity Fee (\$)	Small Entity Code	Small Entity Fee (\$)	Fee Description	Fee Paid																																																																																																																																																																																										
103	22	203	11	Claims in excess of 20																																																																																																																																																																																											
102	82	202	41	Independent claims in excess of 3																																																																																																																																																																																											
104	270	204	135	Multiple dependent claim																																																																																																																																																																																											
109	82	209	41	Reissue independent claims over original patent																																																																																																																																																																																											
110	22	210	11	Reissue claims in excess of 20 and over original patent																																																																																																																																																																																											
<b>SUBTOTAL (2) (\$)</b>																																																																																																																																																																																															
<table border="1" style="width:100%; border-collapse: collapse;"> <thead> <tr> <th>Large Entity Code</th> <th>Large Entity Fee (\$)</th> <th>Small Entity Code</th> <th>Small Entity Fee (\$)</th> <th>Fee Description</th> <th>Fee Paid</th> </tr> </thead> <tbody> <tr><td>103</td><td>22</td><td>203</td><td>11</td><td>Claims in excess of 20</td><td></td></tr> <tr><td>102</td><td>82</td><td>202</td><td>41</td><td>Independent claims in excess of 3</td><td></td></tr> <tr><td>104</td><td>270</td><td>204</td><td>135</td><td>Multiple dependent claim</td><td></td></tr> <tr><td>109</td><td>82</td><td>209</td><td>41</td><td>Reissue independent claims over original patent</td><td></td></tr> <tr><td>110</td><td>22</td><td>210</td><td>11</td><td>Reissue claims in excess of 20 and over original patent</td><td></td></tr> <tr> <td colspan="5" style="text-align: right;"><b>SUBTOTAL (2) (\$)</b></td> <td></td> </tr> </tbody> </table>						Large Entity Code	Large Entity Fee (\$)	Small Entity Code	Small Entity Fee (\$)	Fee Description	Fee Paid	103	22	203	11	Claims in excess of 20		102	82	202	41	Independent claims in excess of 3		104	270	204	135	Multiple dependent claim		109	82	209	41	Reissue independent claims over original patent		110	22	210	11	Reissue claims in excess of 20 and over original patent		<b>SUBTOTAL (2) (\$)</b>																																																																																																																																																					
Large Entity Code	Large Entity Fee (\$)	Small Entity Code	Small Entity Fee (\$)	Fee Description	Fee Paid																																																																																																																																																																																										
103	22	203	11	Claims in excess of 20																																																																																																																																																																																											
102	82	202	41	Independent claims in excess of 3																																																																																																																																																																																											
104	270	204	135	Multiple dependent claim																																																																																																																																																																																											
109	82	209	41	Reissue independent claims over original patent																																																																																																																																																																																											
110	22	210	11	Reissue claims in excess of 20 and over original patent																																																																																																																																																																																											
<b>SUBTOTAL (2) (\$)</b>																																																																																																																																																																																															
<table border="1" style="width:100%; border-collapse: collapse;"> <thead> <tr> <th>Large Entity Code</th> <th>Large Entity Fee (\$)</th> <th>Small Entity Code</th> <th>Small Entity Fee (\$)</th> <th>Fee Description</th> <th>Fee Paid</th> </tr> </thead> <tbody> <tr><td>103</td><td>22</td><td>203</td><td>11</td><td>Claims in excess of 20</td><td></td></tr> <tr><td>102</td><td>82</td><td>202</td><td>41</td><td>Independent claims in excess of 3</td><td></td></tr> <tr><td>104</td><td>270</td><td>204</td><td>135</td><td>Multiple dependent claim</td><td></td></tr> <tr><td>109</td><td>82</td><td>209</td><td>41</td><td>Reissue independent claims over original patent</td><td></td></tr> <tr><td>110</td><td>22</td><td>210</td><td>11</td><td>Reissue claims in excess of 20 and over original patent</td><td></td></tr> <tr> <td colspan="5" style="text-align: right;"><b>SUBTOTAL (2) (\$)</b></td> <td></td> </tr> </tbody> </table>						Large Entity Code	Large Entity Fee (\$)	Small Entity Code	Small Entity Fee (\$)	Fee Description	Fee Paid	103	22	203	11	Claims in excess of 20		102	82	202	41	Independent claims in excess of 3		104	270	204	135	Multiple dependent claim		109	82	209	41	Reissue independent claims over original patent		110	22	210	11	Reissue claims in excess of 20 and over original patent		<b>SUBTOTAL (2) (\$)</b>																																																																																																																																																					
Large Entity Code	Large Entity Fee (\$)	Small Entity Code	Small Entity Fee (\$)	Fee Description	Fee Paid																																																																																																																																																																																										
103	22	203	11	Claims in excess of 20																																																																																																																																																																																											
102	82	202	41	Independent claims in excess of 3																																																																																																																																																																																											
104	270	204	135	Multiple dependent claim																																																																																																																																																																																											
109	82	209	41	Reissue independent claims over original patent																																																																																																																																																																																											
110	22	210	11	Reissue claims in excess of 20 and over original patent																																																																																																																																																																																											
<b>SUBTOTAL (2) (\$)</b>																																																																																																																																																																																															
<table border="1" style="width:100%; border-collapse: collapse;"> <thead> <tr> <th>Large Entity Code</th> <th>Large Entity Fee (\$)</th> <th>Small Entity Code</th> <th>Small Entity Fee (\$)</th> <th>Fee Description</th> <th>Fee Paid</th> </tr> </thead> <tbody> <tr><td>103</td><td>22</td><td>203</td><td>11</td><td>Claims in excess of 20</td><td></td></tr> <tr><td>102</td><td>82</td><td>202</td><td>41</td><td>Independent claims in excess of 3</td><td></td></tr> <tr><td>104</td><td>270</td><td>204</td><td>135</td><td>Multiple dependent claim</td><td></td></tr> <tr><td>109</td><td>82</td><td>209</td><td>41</td><td>Reissue independent claims over original patent</td><td></td></tr> <tr><td>110</td><td>22</td><td>210</td><td>11</td><td>Reissue claims in excess of 20 and over original patent</td><td></td></tr> <tr> <td colspan="5" style="text-align: right;"><b>SUBTOTAL (2) (\$)</b></td> <td></td> </tr> </tbody> </table>						Large Entity Code	Large Entity Fee (\$)	Small Entity Code	Small Entity Fee (\$)	Fee Description	Fee Paid	103	22	203	11	Claims in excess of 20		102	82	202	41	Independent claims in excess of 3		104	270	204	135	Multiple dependent claim		109	82	209	41	Reissue independent claims over original patent		110	22	210	11	Reissue claims in excess of 20 and over original patent		<b>SUBTOTAL (2) (\$)</b>																																																																																																																																																					
Large Entity Code	Large Entity Fee (\$)	Small Entity Code	Small Entity Fee (\$)	Fee Description	Fee Paid																																																																																																																																																																																										
103	22	203	11	Claims in excess of 20																																																																																																																																																																																											
102	82	202	41	Independent claims in excess of 3																																																																																																																																																																																											
104	270	204	135	Multiple dependent claim																																																																																																																																																																																											
109	82	209	41	Reissue independent claims over original patent																																																																																																																																																																																											
110	22	210	11	Reissue claims in excess of 20 and over original patent																																																																																																																																																																																											
<b>SUBTOTAL (2) (\$)</b>																																																																																																																																																																																															
<table border="1" style="width:100%; border-collapse: collapse;"> <thead> <tr> <th>Large Entity Code</th> <th>Large Entity Fee (\$)</th> <th>Small Entity Code</th> <th>Small Entity Fee (\$)</th> <th>Fee Description</th> <th>Fee Paid</th> </tr> </thead> <tbody> <tr><td>103</td><td>22</td><td>203</td><td>11</td><td>Claims in excess of 20</td><td></td></tr> <tr><td>102</td><td>82</td><td>202</td><td>41</td><td>Independent claims in excess of 3</td><td></td></tr> <tr><td>104</td><td>270</td><td>204</td><td>135</td><td>Multiple dependent claim</td><td></td></tr> <tr><td>109</td><td>82</td><td>209</td><td>41</td><td>Reissue independent claims over original patent</td><td></td></tr> <tr><td>110</td><td>22</td><td>210</td><td>11</td><td>Reissue claims in excess of 20 and over original patent</td><td></td></tr> <tr> <td colspan="5" style="text-align: right;"><b>SUBTOTAL (2) (\$)</b></td> <td></td> </tr> </tbody> </table>						Large Entity Code	Large Entity Fee (\$)	Small Entity Code	Small Entity Fee (\$)	Fee Description	Fee Paid	103	22	203	11	Claims in excess of 20		102	82	202	41	Independent claims in excess of 3		104	270	204	135	Multiple dependent claim		109	82	209	41	Reissue independent claims over original patent		110	22	210	11	Reissue claims in excess of 20 and over original patent		<b>SUBTOTAL (2) (\$)</b>																																																																																																																																																					
Large Entity Code	Large Entity Fee (\$)	Small Entity Code	Small Entity Fee (\$)	Fee Description	Fee Paid																																																																																																																																																																																										
103	22	203	11	Claims in excess of 20																																																																																																																																																																																											
102	82	202	41	Independent claims in excess of 3																																																																																																																																																																																											
104	270	204	135	Multiple dependent claim																																																																																																																																																																																											
109	82	209	41	Reissue independent claims over original patent																																																																																																																																																																																											
110	22	210	11	Reissue claims in excess of 20 and over original patent																																																																																																																																																																																											
<b>SUBTOTAL (2) (\$)</b>																																																																																																																																																																																															
<table border="1" style="width:100%; border-collapse: collapse;"> <thead> <tr> <th>Large Entity Code</th> <th>Large Entity Fee (\$)</th> <th>Small Entity Code</th> <th>Small Entity Fee (\$)</th> <th>Fee Description</th> <th>Fee Paid</th> </tr> </thead> <tbody> <tr><td>103</td><td>22</td><td>203</td><td>11</td><td>Claims in excess of 20</td><td></td></tr> <tr><td>102</td><td>82</td><td>202</td><td>41</td><td>Independent claims in excess of 3</td><td></td></tr> <tr><td>104</td><td>270</td><td>204</td><td>135</td><td>Multiple dependent claim</td><td></td></tr> <tr><td>109</td><td>82</td><td>209</td><td>41</td><td>Reissue independent claims over original patent</td><td></td></tr> <tr><td>110</td><td>22</td><td>210</td><td>11</td><td>Reissue claims in excess of 20 and over original patent</td><td></td></tr> <tr> <td colspan="5" style="text-align: right;"><b>SUBTOTAL (2) (\$)</b></td> <td></td> </tr> </tbody> </table>						Large Entity Code	Large Entity Fee (\$)	Small Entity Code	Small Entity Fee (\$)	Fee Description	Fee Paid	103	22	203	11	Claims in excess of 20		102	82	202	41	Independent claims in excess of 3		104	270	204	135	Multiple dependent claim		109	82	209	41	Reissue independent claims over original patent		110	22	210	11	Reissue claims in excess of 20 and over original patent		<b>SUBTOTAL (2) (\$)</b>																																																																																																																																																					
Large Entity Code	Large Entity Fee (\$)	Small Entity Code	Small Entity Fee (\$)	Fee Description	Fee Paid																																																																																																																																																																																										
103	22	203	11	Claims in excess of 20																																																																																																																																																																																											
102	82	202	41	Independent claims in excess of 3																																																																																																																																																																																											
104	270	204	135	Multiple dependent claim																																																																																																																																																																																											
109	82	209	41	Reissue independent claims over original patent																																																																																																																																																																																											
110	22	210	11	Reissue claims in excess of 20 and over original patent																																																																																																																																																																																											
<b>SUBTOTAL (2) (\$)</b>																																																																																																																																																																																															
<table border="1" style="width:100%; border-collapse: collapse;"> <thead> <tr> <th>Large Entity Code</th> <th>Large Entity Fee (\$)</th> <th>Small Entity Code</th> <th>Small Entity Fee (\$)</th> <th>Fee Description</th> <th>Fee Paid</th> </tr> </thead> <tbody> <tr><td>103</td><td>22</td><td>203</td><td>11</td><td>Claims in excess of 20</td><td></td></tr> <tr><td>102</td><td>82</td><td>202</td><td>41</td><td>Independent claims in excess of 3</td><td></td></tr> <tr><td>104</td><td>270</td><td>204</td><td>135</td><td>Multiple dependent claim</td><td></td></tr> <tr><td>109</td><td>82</td><td>209</td><td>41</td><td>Reissue independent claims over original patent</td><td></td></tr> <tr><td>110</td><td>22</td><td>210</td><td>11</td><td>Reissue claims in excess of 20 and over original patent</td><td></td></tr> <tr> <td colspan="5" style="text-align: right;"><b>SUBTOTAL (2) (\$)</b></td> <td></td> </tr> </tbody> </table>						Large Entity Code	Large Entity Fee (\$)	Small Entity Code	Small Entity Fee (\$)	Fee Description	Fee Paid	103	22	203	11	Claims in excess of 20		102	82	202	41	Independent claims in excess of 3		104	270	204	135	Multiple dependent claim		109	82	209	41	Reissue independent claims over original patent		110	22	210	11	Reissue claims in excess of 20 and over original patent		<b>SUBTOTAL (2) (\$)</b>																																																																																																																																																					
Large Entity Code	Large Entity Fee (\$)	Small Entity Code	Small Entity Fee (\$)	Fee Description	Fee Paid																																																																																																																																																																																										
103	22	203	11	Claims in excess of 20																																																																																																																																																																																											
102	82	202	41	Independent claims in excess of 3																																																																																																																																																																																											
104	270	204	135	Multiple dependent claim																																																																																																																																																																																											
109	82	209	41	Reissue independent claims over original patent																																																																																																																																																																																											
110	22	210	11	Reissue claims in excess of 20 and over original patent																																																																																																																																																																																											
<b>SUBTOTAL (2) (\$)</b>																																																																																																																																																																																															
<table border="1" style="width:100%; border-collapse: collapse;"> <thead> <tr> <th>Large Entity Code</th> <th>Large Entity Fee (\$)</th> <th>Small Entity Code</th> <th>Small Entity Fee (\$)</th> <th>Fee Description</th> <th>Fee Paid</th> </tr> </thead> <tbody> <tr><td>103</td><td>22</td><td>203</td><td>11</td><td>Claims in excess of 20</td><td></td></tr> <tr><td>102</td><td>82</td><td>202</td><td>41</td><td>Independent claims in excess of 3</td><td></td></tr> <tr><td>104</td><td>270</td><td>204</td><td>135</td><td>Multiple dependent claim</td><td></td></tr> <tr><td>109</td><td>82</td><td>209</td><td>41</td><td>Reissue independent claims over original patent</td><td></td></tr> <tr><td>110</td><td>22</td><td>210</td><td>11</td><td>Reissue claims in excess of 20 and over original patent</td><td></td></tr> <tr> <td colspan="5" style="text-align: right;"><b>SUBTOTAL (2) (\$)</b></td> <td></td> </tr> </tbody> </table>						Large Entity Code	Large Entity Fee (\$)	Small Entity Code	Small Entity Fee (\$)	Fee Description	Fee Paid	103	22	203	11	Claims in excess of 20		102	82	202	41	Independent claims in excess of 3		104	270	204	135	Multiple dependent claim		109	82	209	41	Reissue independent claims over original patent		110	22	210	11	Reissue claims in excess of 20 and over original patent		<b>SUBTOTAL (2) (\$)</b>																																																																																																																																																					
Large Entity Code	Large Entity Fee (\$)	Small Entity Code	Small Entity Fee (\$)	Fee Description	Fee Paid																																																																																																																																																																																										
103	22	203	11	Claims in excess of 20																																																																																																																																																																																											
102	82	202	41	Independent claims in excess of 3																																																																																																																																																																																											
104	270	204	135	Multiple dependent claim																																																																																																																																																																																											
109	82	209	41	Reissue independent claims over original patent																																																																																																																																																																																											
110	22	210	11	Reissue claims in excess of 20 and over original patent																																																																																																																																																																																											
<b>SUBTOTAL (2) (\$)</b>																																																																																																																																																																																															
<table border="1" style="width:100%; border-collapse: collapse;"> <thead> <tr> <th>Large Entity Code</th> <th>Large Entity Fee (\$)</th> <th>Small Entity Code</th> <th>Small Entity Fee (\$)</th> <th>Fee Description</th> <th>Fee Paid</th> </tr> </thead> <tbody> <tr><td>103</td><td>22</td><td>203</td><td>11</td><td>Claims in excess of 20</td><td></td></tr> <tr><td>102</td><td>82</td><td>202</td><td>41</td><td>Independent claims in excess of 3</td><td></td></tr> <tr><td>104</td><td>270</td><td>204</td><td>135</td><td>Multiple dependent claim</td><td></td></tr> <tr><td>109</td><td>82</td><td>209</td><td>41</td><td>Reissue independent claims over original patent</td><td></td></tr> <tr><td>110</td><td>22</td><td>210</td><td>11</td><td>Reissue claims in excess of 20 and over original patent</td><td></td></tr> <tr> <td colspan="5" style="text-align: right;"><b>SUBTOTAL (2) (\$)</b></td> <td></td> </tr> </tbody> </table>						Large Entity Code	Large Entity Fee (\$)	Small Entity Code	Small Entity Fee (\$)	Fee Description	Fee Paid	103	22	203	11	Claims in excess of 20		102	82	202	41	Independent claims in excess of 3		104	270	204	135	Multiple dependent claim		109	82	209	41	Reissue independent claims over original patent		110	22	210	11	Reissue claims in excess of 20 and over original patent		<b>SUBTOTAL (2) (\$)</b>																																																																																																																																																					
Large Entity Code	Large Entity Fee (\$)	Small Entity Code	Small Entity Fee (\$)	Fee Description	Fee Paid																																																																																																																																																																																										
103	22	203	11	Claims in excess of 20																																																																																																																																																																																											
102	82	202	41	Independent claims in excess of 3																																																																																																																																																																																											
104	270	204	135	Multiple dependent claim																																																																																																																																																																																											
109	82	209	41	Reissue independent claims over original patent																																																																																																																																																																																											
110	22	210	11	Reissue claims in excess of 20 and over original patent																																																																																																																																																																																											
<b>SUBTOTAL (2) (\$)</b>																																																																																																																																																																																															
<table border="1" style="width:100%; border-collapse: collapse;"> <thead> <tr> <th>Large Entity Code</th> <th>Large Entity Fee (\$)</th> <th>Small Entity Code</th> <th>Small Entity Fee (\$)</th> <th>Fee Description</th> <th>Fee Paid</th> </tr> </thead> <tbody> <tr><td>103</td><td>22</td><td>203</td><td>11</td><td>Claims in excess of 20</td><td></td></tr> <tr><td>102</td><td>82</td><td>202</td><td>41</td><td>Independent claims in excess of 3</td><td></td></tr> <tr><td>104</td><td>270</td><td>204</td><td>135</td><td>Multiple dependent claim</td><td></td></tr> <tr><td>109</td><td>82</td><td>209</td><td>41</td><td>Reissue independent claims over original patent</td><td></td></tr> <tr><td>110</td><td>22</td><td>210</td><td>11</td><td>Reissue claims in excess of 20 and over original patent</td><td></td></tr> <tr> <td colspan="5" style="text-align: right;"><b>SUBTOTAL (2) (\$)</b></td> <td></td> </tr> </tbody> </table>						Large Entity Code	Large Entity Fee (\$)	Small Entity Code	Small Entity Fee (\$)	Fee Description	Fee Paid	103	22	203	11	Claims in excess of 20		102	82	202	41	Independent claims in excess of 3		104	270	204	135	Multiple dependent claim		109	82	209	41	Reissue independent claims over original patent		110	22	210	11	Reissue claims in excess of 20 and over original patent		<b>SUBTOTAL (2) (\$)</b>																																																																																																																																																					
Large Entity Code	Large Entity Fee (\$)	Small Entity Code	Small Entity Fee (\$)	Fee Description	Fee Paid																																																																																																																																																																																										
103	22	203	11	Claims in excess of 20																																																																																																																																																																																											
102	82	202	41	Independent claims in excess of 3																																																																																																																																																																																											
104	270	204	135	Multiple dependent claim																																																																																																																																																																																											
109	82	209	41	Reissue independent claims over original patent																																																																																																																																																																																											
110	22	210	11	Reissue claims in excess of 20 and over original patent																																																																																																																																																																																											
<b>SUBTOTAL (2) (\$)</b>																																																																																																																																																																																															
<table border="1" style="width:100%; border-collapse: collapse;"> <thead> <tr> <th>Large Entity Code</th> <th>Large Entity Fee (\$)</th> <th>Small Entity Code</th> <th>Small Entity Fee (\$)</th> <th>Fee Description</th> <th>Fee Paid</th> </tr> </thead> <tbody> <tr><td>103</td><td>22</td><td>203</td><td>11</td><td>Claims in excess of 20</td><td></td></tr> <tr><td>102</td><td>82</td><td>202</td><td>41</td><td>Independent claims in excess of 3</td><td></td></tr> <tr><td>104</td><td>270</td><td>204</td><td>135</td><td>Multiple dependent claim</td><td></td></tr> <tr><td>109</td><td>82</td><td>209</td><td>41</td><td>Reissue independent claims over original patent</td><td></td></tr> <tr><td>110</td><td>22</td><td>210</td><td>11</td><td>Reissue claims in excess of 20 and over original patent</td><td></td></tr> <tr> <td colspan="5" style="text-align: right;"><b>SUBTOTAL (2) (\$)</b></td> <td></td> </tr> </tbody> </table>						Large Entity Code	Large Entity Fee (\$)	Small Entity Code	Small Entity Fee (\$)	Fee Description	Fee Paid	103	22	203	11	Claims in excess of 20		102	82	202	41	Independent claims in excess of 3		104	270	204	135	Multiple dependent claim		109	82	209	41	Reissue independent claims over original patent		110	22	210	11	Reissue claims in excess of 20 and over original patent		<b>SUBTOTAL (2) (\$)</b>																																																																																																																																																					
Large Entity Code	Large Entity Fee (\$)	Small Entity Code	Small Entity Fee (\$)	Fee Description	Fee Paid																																																																																																																																																																																										
103	22	203	11	Claims in excess of 20																																																																																																																																																																																											
102	82	202	41	Independent claims in excess of 3																																																																																																																																																																																											
104	270	204	135	Multiple dependent claim																																																																																																																																																																																											
109	82	209	41	Reissue independent claims over original patent																																																																																																																																																																																											
110	22	210	11	Reissue claims in excess of 20 and over original patent																																																																																																																																																																																											
<b>SUBTOTAL (2) (\$)</b>																																																																																																																																																																																															
<table border="1" style="width:100%; border-collapse: collapse;"> <thead> <tr> <th>Large Entity Code</th> <th>Large Entity Fee (\$)</th> <th>Small Entity Code</th> <th>Small Entity Fee (\$)</th> <th>Fee Description</th> <th>Fee Paid</th> </tr> </thead> <tbody> <tr><td>103</td><td>22</td><td>203</td><td>11</td><td>Claims in excess of 20</td><td></td></tr> <tr><td>102</td><td>82</td><td>202</td><td>41</td><td>Independent claims in excess of 3</td><td></td></tr> <tr><td>104</td><td>270</td><td>204</td><td>135</td><td>Multiple dependent claim</td><td></td></tr> <tr><td>109</td><td>82</td><td>209</td><td>41</td><td>Reissue independent claims over original patent</td><td></td></tr> <tr><td>110</td><td>22</td><td>210</td><td>11</td><td>Reissue claims in excess of 20 and over original patent</td><td></td></tr> <tr> <td colspan="5" style="text-align: right;"><b>SUBTOTAL (2) (\$)</b></td> <td></td> </tr> </tbody> </table>						Large Entity Code	Large Entity Fee (\$)	Small Entity Code	Small Entity Fee (\$)	Fee Description	Fee Paid	103	22	203	11	Claims in excess of 20		102	82	202	41	Independent claims in excess of 3		104	270	204	135	Multiple dependent claim		109	82	209	41	Reissue independent claims over original patent		110	22	210	11	Reissue claims in excess of 20 and over original patent		<b>SUBTOTAL (2) (\$)</b>																																																																																																																																																					
Large Entity Code	Large Entity Fee (\$)	Small Entity Code	Small Entity Fee (\$)	Fee Description	Fee Paid																																																																																																																																																																																										
103	22	203	11	Claims in excess of 20																																																																																																																																																																																											
102	82	202	41	Independent claims in excess of 3																																																																																																																																																																																											
104	270	204	135	Multiple dependent claim																																																																																																																																																																																											
109	82	209	41	Reissue independent claims over original patent																																																																																																																																																																																											
110	22	210	11	Reissue claims in excess of 20 and over original patent																																																																																																																																																																																											
<b>SUBTOTAL (2) (\$)</b>																																																																																																																																																																																															
<table border="1" style="width:100%; border-collapse: collapse;"> <thead> <tr> <th>Large Entity Code</th> <th>Large Entity Fee (\$)</th> <th>Small Entity Code</th> <th>Small Entity Fee (\$)</th> <th>Fee Description</th> <th>Fee Paid</th> </tr> </thead> <tbody> <tr><td>103</td><td>22</td><td>203</td><td>11</td><td>Claims in excess of 20</td><td></td></tr> <tr><td>102</td><td>82</td><td>202</td><td>41</td><td>Independent claims in excess of 3</td><td></td></tr> <tr><td>104</td><td>270</td><td>204</td><td>135</td><td>Multiple dependent claim</td><td></td></tr> <tr><td>109</td><td>82</td><td>209</td><td>41</td><td>Reissue independent claims over original patent</td><td></td></tr> <tr><td>110</td><td>22</td><td>210</td><td>11</td><td>Reissue claims in excess of 20 and over original patent</td><td></td></tr> <tr> <td colspan="5" style="text-align: right;"><b>SUBTOTAL (2) (\$)</b></td> <td></td> </tr> </tbody> </table>						Large Entity Code	Large Entity Fee (\$)	Small Entity Code	Small Entity Fee (\$)	Fee Description	Fee Paid	103	22	203	11	Claims in excess of 20		102	82	202	41	Independent claims in excess of 3		104	270	204	135	Multiple dependent claim		109	82	209	41	Reissue independent claims over original patent		110	22	210	11	Reissue claims in excess of 20 and over original patent		<b>SUBTOTAL (2) (\$)</b>																																																																																																																																																					
Large Entity Code	Large Entity Fee (\$)	Small Entity Code	Small Entity Fee (\$)	Fee Description	Fee Paid																																																																																																																																																																																										
103	22	203	11	Claims in excess of 20																																																																																																																																																																																											
102	82	202	41	Independent claims in excess of 3																																																																																																																																																																																											
104	270	204	135	Multiple dependent claim																																																																																																																																																																																											
109	82	209	41	Reissue independent claims over original patent																																																																																																																																																																																											
110	22	210	11	Reissue claims in excess of 20 and over original patent																																																																																																																																																																																											
<b>SUBTOTAL (2) (\$)</b>																																																																																																																																																																																															
<table border="1" style="width:100%; border-collapse: collapse;"> <thead> <tr> <th>Large Entity Code</th> <th>Large Entity Fee (\$)</th> <th>Small Entity Code</th> <th>Small Entity Fee (\$)</th> <th>Fee Description</th> <th>Fee Paid</th> </tr> </thead> <tbody> <tr><td>103</td><td>22</td><td>203</td><td>11</td><td>Claims in excess of 20</td><td></td></tr> <tr><td>102</td><td>82</td><td>202</td><td>41</td><td>Independent claims in excess of 3</td><td></td></tr> <tr><td>104</td><td>270</td><td>204</td><td>135</td><td>Multiple dependent claim</td><td></td></tr> <tr><td>109</td><td>82</td><td>209</td><td>41</td><td>Reissue independent claims over original patent</td><td></td></tr> <tr><td>110</td><td>22</td><td>210</td><td>11</td><td>Reissue claims in excess of 20 and over original patent</td><td></td></tr> <tr> <td colspan="5" style="text-align: right;"><b>SUBTOTAL (2) (\$)</b></td> <td></td> </tr> </tbody> </table>						Large Entity Code	Large Entity Fee (\$)	Small Entity Code	Small Entity Fee (\$)	Fee Description	Fee Paid	103	22	203	11	Claims in excess of 20		102	82	202	41	Independent claims in excess of 3		104	270	204	135	Multiple dependent claim		109	82	209	41	Reissue independent claims over original patent		110	22	210	11	Reissue claims in excess of 20 and over original patent		<b>SUBTOTAL (2) (\$)</b>																																																																																																																																																					
Large Entity Code	Large Entity Fee (\$)	Small Entity Code	Small Entity Fee (\$)	Fee Description	Fee Paid																																																																																																																																																																																										
103	22	203	11	Claims in excess of 20																																																																																																																																																																																											
102	82	202	41	Independent claims in excess of 3																																																																																																																																																																																											
104	270	204	135	Multiple dependent claim																																																																																																																																																																																											
109	82	209	41	Reissue independent claims over original patent																																																																																																																																																																																											
110	22	210	11	Reissue claims in excess of 20 and over original patent																																																																																																																																																																																											
<b>SUBTOTAL (2) (\$)</b>																																																																																																																																																																																															
<table border="1" style="width:100%; border-collapse: collapse;"> <thead> <tr> <th>Large Entity Code</th> <th>Large Entity Fee (\$)</th> <th>Small Entity Code</th> <th>Small Entity Fee (\$)</th> <th>Fee Description</th> <th>Fee Paid</th> </tr> </thead> <tbody> <tr><td>103</td><td>22</td><td>203</td><td>11</td><td>Claims in excess of 20</td><td></td></tr> <tr><td>102</td><td>82</td><td>202</td><td>41</td><td>Independent claims in excess of 3</td><td></td></tr> <tr><td>104</td><td>270</td><td>204</td><td>135</td><td>Multiple dependent claim</td><td></td></tr> <tr><td>109</td><td>82</td><td>209</td><td>41</td><td>Reissue independent claims over original patent</td><td></td></tr> <tr><td>110</td><td>22</td><td>210</td><td>11</td><td>Reissue claims in excess of 20 and over original patent</td><td></td></tr> <tr> <td colspan="5" style="text-align: right;"><b>SUBTOTAL (2) (\$)</b></td> <td></td> </tr> </tbody> </table>						Large Entity Code	Large Entity Fee (\$)	Small Entity Code	Small Entity Fee (\$)	Fee Description	Fee Paid	103	22	203	11	Claims in excess of 20		102	82	202	41	Independent claims in excess of 3		104	270	204	135	Multiple dependent claim		109	82	209	41	Reissue independent claims over original patent		110	22	210	11	Reissue claims in excess of 20 and over original patent		<b>SUBTOTAL (2) (\$)</b>																																																																																																																																																					
Large Entity Code	Large Entity Fee (\$)	Small Entity Code	Small Entity Fee (\$)	Fee Description	Fee Paid																																																																																																																																																																																										
103	22	203	11	Claims in excess of 20																																																																																																																																																																																											
102	82	202	41	Independent claims in excess of 3																																																																																																																																																																																											
104	270	204	135	Multiple dependent claim																																																																																																																																																																																											
109	82	209	41	Reissue independent claims over original patent																																																																																																																																																																																											
110	22	210	11	Reissue claims in excess of 20 and over original patent																																																																																																																																																																																											
<b>SUBTOTAL (2) (\$)</b>																																																																																																																																																																																															
<table border="1" style="width:100%; border-collapse: collapse;"> <thead> <tr> <th>Large Entity Code</th> <th>Large Entity Fee (\$)</th> <th>Small Entity Code</th> <th>Small Entity Fee (\$)</th> <th>Fee Description</th> <th>Fee Paid</th> </tr> </thead> <tbody> <tr><td>103</td><td>22</td><td>203</td><td>11</td><td>Claims in excess of 20</td><td></td></tr> <tr><td>102</td><td>82</td><td>202</td><td>41</td><td>Independent claims in excess of 3</td><td></td></tr> <tr><td>104</td><td>270</td><td>204</td><td>135</td><td>Multiple dependent claim</td><td></td></tr> <tr><td>109</td><td>82</td><td>209</td><td>41</td><td>Reissue independent claims over original patent</td><td></td></tr> <tr><td>110</td><td>22</td><td>210</td><td>11</td><td>Reissue claims in excess of 20 and over original patent</td><td></td></tr> <tr> <td colspan="5" style="text-align: right;"><b>SUBTOTAL (2) (\$)</b></td> <td></td> </tr> </tbody> </table>						Large Entity Code	Large Entity Fee (\$)	Small Entity Code	Small Entity Fee (\$)	Fee Description	Fee Paid	103	22	203	11	Claims in excess of 20		102	82	202	41	Independent claims in excess of 3		104	270	204	135	Multiple dependent claim		109	82	209	41	Reissue independent claims over original patent		110	22	210	11	Reissue claims in excess of 20 and over original patent		<b>SUBTOTAL (2) (\$)</b>																																																																																																																																																					
Large Entity Code	Large Entity Fee (\$)	Small Entity Code	Small Entity Fee (\$)	Fee Description	Fee Paid																																																																																																																																																																																										
103	22	203	11	Claims in excess of 20																																																																																																																																																																																											
102	82	202	41	Independent claims in excess of 3																																																																																																																																																																																											
104	270	204	135	Multiple dependent claim																																																																																																																																																																																											
109	82	209	41	Reissue independent claims over original patent																																																																																																																																																																																											
110	22	210	11	Reissue claims in excess of 20 and over original patent																																																																																																																																																																																											
<b>SUBTOTAL (2) (\$)</b>																																																																																																																																																																																															
<table border="1" style="width:100%; border-collapse: collapse;"> <thead> <tr> <th>Large Entity Code</th> <th>Large Entity Fee (\$)</th> <th>Small Entity Code</th> <th>Small Entity Fee (\$)</th> <th>Fee Description</th> <th>Fee Paid</th> </tr> </thead> <tbody> <tr><td>103</td><td>22</td><td>203</td><td>11</td><td>Claims in excess of 20</td><td></td></tr> <tr><td>102</td><td>82</td><td>202</td><td>41</td><td>Independent claims in excess of 3</td><td></td></tr> <tr><td>104</td><td>270</td><td>204</td><td>135</td><td>Multiple dependent claim</td><td></td></tr> <tr><td>109</td><td>82</td><td>209</td><td>41</td><td>Reissue independent claims over original patent</td><td></td></tr> <tr><td>110</td><td>22</td><td>210</td><td>11</td><td>Reissue claims in excess of 20 and over original patent</td><td></td></tr> <tr> <td colspan="5" style="text-align: right;"><b>SUBTOTAL (2) (\$)</b></td> <td></td> </tr> </tbody> </table>						Large Entity Code	Large Entity Fee (\$)	Small Entity Code	Small Entity Fee (\$)	Fee Description	Fee Paid	103	22	203	11	Claims in excess of 20		102	82	202	41	Independent claims in excess of 3		104	270	204	135	Multiple dependent claim		109	82	209	41	Reissue independent claims over original patent		110	22	210	11	Reissue claims in excess of 20 and over original patent		<b>SUBTOTAL (2) (\$)</b>																																																																																																																																																					
Large Entity Code	Large Entity Fee (\$)	Small Entity Code	Small Entity Fee (\$)	Fee Description	Fee Paid																																																																																																																																																																																										
103	22	203	11	Claims in excess of 20																																																																																																																																																																																											
102	82	202	41	Independent claims in excess of 3																																																																																																																																																																																											
104	270	204	135	Multiple dependent claim																																																																																																																																																																																											
109	82	209	41	Reissue independent claims over original patent																																																																																																																																																																																											
110	22	210	11	Reissue claims in excess of 20 and over original patent																																																																																																																																																																																											
<b>SUBTOTAL (2) (\$)</b>																																																																																																																																																																																															
<table border="1" style="width:100%; border-collapse: collapse;"> <thead> <tr> <th>Large Entity Code</th> <th>Large Entity Fee (\$)</th> <th>Small Entity Code</th> <th>Small Entity Fee (\$)</th> <th>Fee Description</th> <th>Fee Paid</th> </tr> </thead> <tbody> <tr><td>103</td><td>22</td><td>203</td><td>11</td><td>Claims in excess of 20</td><td></td></tr> <tr><td>102</td><td>82</td><td>202</td><td>41</td><td>Independent claims in excess of 3</td><td></td></tr> <tr><td>104</td><td>270</td><td>204</td><td>135</td><td>Multiple dependent claim</td><td></td></tr> <tr><td>109</td><td>82</td><td>209</td><td>41</td><td>Reissue independent claims over original patent</td><td></td></tr> <tr><td>110</td><td>22</td><td>210</td><td>11</td><td>Reissue claims in excess of 20 and over original patent</td><td></td></tr> <tr> <td colspan="5" style="text-align: right;"><b>SUBTOTAL (2) (\$)</b></td> <td></td> </tr> </tbody> </table>						Large Entity Code	Large Entity Fee (\$)	Small Entity Code	Small Entity Fee (\$)	Fee Description	Fee Paid	103	22	203	11	Claims in excess of 20		102	82	202	41	Independent claims in excess of 3		104	270	204	135	Multiple dependent claim		109	82	209	41	Reissue independent claims over original patent		110	22	210	11	Reissue claims in excess of 20 and over original patent		<b>SUBTOTAL (2) (\$)</b>																																																																																																																																																					
Large Entity Code	Large Entity Fee (\$)	Small Entity Code	Small Entity Fee (\$)	Fee Description	Fee Paid																																																																																																																																																																																										
103	22	203	11	Claims in excess of 20																																																																																																																																																																																											
102	82	202	41	Independent claims in excess of 3																																																																																																																																																																																											
104	270	204	135	Multiple dependent claim																																																																																																																																																																																											
109	82	209	41	Reissue independent claims over original patent																																																																																																																																																																																											
110	22	210	11	Reissue claims in excess of 20 and over original patent																																																																																																																																																																																											
<b>SUBTOTAL (2) (\$)</b>																																																																																																																																																																																															
<table border="1" style="width:100%; border-collapse: collapse;"> <thead> <tr> <th>Large Entity Code</th> <th>Large Entity Fee (\$)</th> <th>Small Entity Code</th> <th>Small Entity Fee (\$)</th> <th>Fee Description</th> <th>Fee Paid</th> </tr> </thead> <tbody> <tr><td>103</td><td>22</td><td>203</td><td>11</td><td>Claims in excess of 20</td><td></td></tr> <tr><td>102</td><td>82</td><td>202</td><td>41</td><td>Independent claims in excess of 3</td><td></td></tr> <tr><td>104</td><td>270</td><td>204</td><td>135</td><td>Multiple dependent claim</td><td></td></tr> <tr><td>109</td><td>82</td><td>209</td><td>41</td><td>Reissue independent claims over original patent</td><td></td></tr> <tr><td>110</td><td>22</td><td>210</td><td>11</td><td>Reissue claims in excess of 20 and over original patent</td><td></td></tr> <tr> <td colspan="5" style="text-align: right;"><b>SUBTOTAL (2) (\$)</b></td> <td></td> </tr> </tbody> </table>						Large Entity Code	Large Entity Fee (\$)	Small Entity Code	Small Entity Fee (\$)	Fee Description	Fee Paid	103	22	203	11	Claims in excess of 20		102	82	202	41	Independent claims in excess of 3		104	270	204	135	Multiple dependent claim		109	82	209	41	Reissue independent claims over original patent		110	22	210	11	Reissue claims in excess of 20 and over original patent		<b>SUBTOTAL (2) (\$)</b>																																																																																																																																																					
Large Entity Code	Large Entity Fee (\$)	Small Entity Code	Small Entity Fee (\$)	Fee Description	Fee Paid																																																																																																																																																																																										
103	22	203	11	Claims in excess of 20																																																																																																																																																																																											
102	82	202	41	Independent claims in excess of 3																																																																																																																																																																																											
104	270	204	135	Multiple dependent claim																																																																																																																																																																																											
109	82	209	41	Reissue independent claims over original patent																																																																																																																																																																																											
110	22	210	11	Reissue claims in excess of 20 and over original patent																																																																																																																																																																																											
<b>SUBTOTAL (2) (\$)</b>																																																																																																																																																																																															
<table border="1" style="width:100%; border-collapse: collapse;"> <thead> <tr> <th>Large Entity Code</th> <th>Large Entity Fee (\$)</th> <th>Small Entity Code</th> <th>Small Entity Fee (\$)</th> <th>Fee Description</th> <th>Fee Paid</th> </tr> </thead> <tbody> <tr><td>103</td><td>22</td><td>203</td><td>11</td><td>Claims in excess of 20</td><td></td></tr> <tr><td>102</td><td>82</td><td>202</td><td>41</td><td>Independent claims in excess of 3</td><td></td></tr> <tr><td>104</td><td>270</td><td>204</td><td>135</td><td>Multiple dependent claim</td><td></td></tr> <tr><td>109</td><td>82</td><td>209</td><td>41</td><td>Reissue independent claims over original patent</td><td></td></tr> <tr><td>110</td><td>22</td><td>210</td><td>11</td><td>Reissue claims in excess of 20 and over original patent</td><td></td></tr> <tr> <td colspan="5" style="text-align: right;"><b>SUBTOTAL (2) (\$)</b></td> <td></td> </tr> </tbody> </table>						Large Entity Code	Large Entity Fee (\$)	Small Entity Code	Small Entity Fee (\$)	Fee Description	Fee Paid	103	22	203	11	Claims in excess of 20		102	82	202	41	Independent claims in excess of 3		104	270	204	135	Multiple dependent claim		109	82	209	41	Reissue independent claims over original patent		110	22	210	11	Reissue claims in excess of 20 and over original patent		<b>SUBTOTAL (2) (\$)</b>																																																																																																																																																					
Large Entity Code	Large Entity Fee (\$)	Small Entity Code	Small Entity Fee (\$)	Fee Description	Fee Paid																																																																																																																																																																																										
103	22	203	11	Claims in excess of 20																																																																																																																																																																																											
102	82	202	41	Independent claims in excess of 3																																																																																																																																																																																											
104	270	204	135	Multiple dependent claim																																																																																																																																																																																											
109	82	209	41	Reissue independent claims over original patent																																																																																																																																																																																											
110	22	210	11	Reissue claims in excess of 20 and over original patent																																																																																																																																																																																											
<b>SUBTOTAL (2) (\$)</b>																																																																																																																																																																																															
<table border="1" style="width:100%; border-collapse: collapse;"> <thead> <tr> <th>Large Entity Code</th> <th>Large Entity Fee (\$)</th> <th>Small Entity Code</th> <th>Small Entity Fee (\$)</th> <th>Fee Description</th> <th>Fee Paid</th> </tr> </thead> <tbody> <tr><td>103</td><td>22</td><td>203</td><td>11</td><td>Claims in excess of 20</td><td></td></tr> <tr><td>102</td><td>82</td><td>202</td><td>41</td><td>Independent claims in excess of 3</td><td></td></tr> <tr><td>104</td><td>270</td><td>204</td><td>135</td><td>Multiple dependent claim</td><td></td></tr> <tr><td>109</td><td>82</td><td>209</td><td>41</td><td>Reissue independent claims over original patent</td><td></td></tr> <tr><td>110</td><td>22</td><td>210</td><td>11</td><td>Reissue claims in excess of 20 and over original patent</td><td></td></tr> <tr> <td colspan="5" style="text-align: right;"><b>SUBTOTAL (2) (\$)</b></td> <td></td> </tr> </tbody> </table>						Large Entity Code	Large Entity Fee (\$)	Small Entity Code	Small Entity Fee (\$)	Fee Description	Fee Paid	103	22	203	11	Claims in excess of 20		102	82	202	41	Independent claims in excess of 3		104	270	204	135	Multiple dependent claim		109	82	209	41	Reissue independent claims over original patent		110	22	210	11	Reissue claims in excess of 20 and over original patent		<b>SUBTOTAL (2) (\$)</b>																																																																																																																																																					
Large Entity Code	Large Entity Fee (\$)	Small Entity Code	Small Entity Fee (\$)	Fee Description	Fee Paid																																																																																																																																																																																										
103	22	203	11	Claims in excess of 20																																																																																																																																																																																											
102	82	202	41	Independent claims in excess of 3																																																																																																																																																																																											
104	270	204	135	Multiple dependent claim																																																																																																																																																																																											
109	82	209	41	Reissue independent claims over original patent																																																																																																																																																																																											
110	22	210	11	Reissue claims in excess of 20 and over original patent																																																																																																																																																																																											
<b>SUBTOTAL (2) (\$)</b>																																																																																																																																																																																															
<table border="1" style="width:100%; border-collapse: collapse;"> <thead> <tr> <th>Large Entity Code</th> <th>Large Entity Fee (\$)</th> <th>Small Entity Code</th> <th>Small Entity</th></tr></thead></table>						Large Entity Code	Large Entity Fee (\$)	Small Entity Code	Small Entity																																																																																																																																																																																						
Large Entity Code	Large Entity Fee (\$)	Small Entity Code	Small Entity																																																																																																																																																																																												



Application/Control Number: 08/727,085

Page 2

Art Unit: 2776

### REASONS FOR ALLOWANCE

1. The following is an examiner's statement of reasons for allowance:

As per independent claims 1, 7, 13, 18, 23 and 25, the claimed feature of "displaying a first and second icon separate from the search window on said display screen...[and] parsing the location identifiers from the initial data file to form an initial list of location identifiers together with storing the initial list, responsive to a selection of the first icon (in claim 1, lines 8-15; substantially similar in the others)", in conjunction with the other claimed limitations, is not shown and would not have been obvious to a person of ordinary skill in the art at the time of the invention in view of the prior art of record.

As shown in the FIGURE 5A of the Applicant's invention, the first and second icons, which initiate parsing of the searched list and retrieve the data from a location in the list, are provided separate (item 300) from the browser window (item 400), which is not shown and not suggested by the prior art of record.

Any comments considered necessary by applicant must be submitted no later than the payment of the issue fee and, to avoid processing delays, should preferably accompany the issue fee. Such submissions should be clearly labeled "Comments on Statement of Reasons for Allowance."

Application/Control Number: 08/727,085

Page 3

Art Unit: 2776

2. Any inquiry concerning this communication or earlier communications from the examiner should be directed to Steve Hong whose telephone number is (703) 308-5465. The examiner can normally be reached on Monday-Friday from 8:00 AM-5:30 PM.

If attempts to reach the examiner by telephone are unsuccessful, the examiner's supervisor, Heather Herndon, can be reached on (703) 305-9701.

Any inquiry of a general nature or relating to the status of this application should be directed to the Group receptionist whose telephone number is (703) 305-3900.

**Any response to this action should be mailed to:**

Commissioner of Patents and Trademarks  
Washington, D.C. 20231

**or faxed to:**

(703) 308-9051, (for formal communications intended for entry)

**Or:**

(703) 305-9724 (for informal or draft communications, please label "PROPOSED" or "DRAFT")

Hand-delivered responses should be brought to Crystal Park II, 2121 Crystal Drive, Arlington, VA., Sixth Floor (Receptionist).

For any written or facsimile communication submitted **ON OR AFTER APRIL 26, 1998**, this Examiner, who was assigned to Art Unit 2772, will be **assigned to Art Unit 2776**. Please include the new Art Unit in the caption or heading of any communication submitted after the **APRIL 26, 1998** date. Your cooperation in this matter will assist in the timely processing of the submission and is appreciated by the Office.

  
Stephen Hong

Patent Examiner

August 26, 1998





UNITED STATES DEPARTMENT OF COMMERCE  
Patent and Trademark Office

**NOTICE OF ALLOWANCE AND ISSUE FEE DUE**

LM41/0831  
CHARLES C. CARY  
WILSON SONSINI GOODRICH & ROSATI  
650 PAGE MILL ROAD  
PALO ALTO CA 94304-1050

APPLICATION NO.	FILING DATE	TOTAL CLAIMS	EXAMINER AND GROUP ART UNIT	DATE MAILED
08/727,082	10/08/96	018	HONG, S	2776 09/31/98
First Named Applicant	BORMAN,	GILBERT		

TITLE OF INVENTION: METHOD AND APPARATUS FOR RETRIEVING DATA FROM A NETWORK USING LOCATION IDENTIFIERS (AS AMENDED)

ATTY'S DOCKET NO.	CLASS-SUBCLASS	BATCH NO.	APPEN. TYPE	SMALL ENTITY	FEE DUE	DATE DUE
3	18041.701	707-501.000	140 UTILITY	YES	\$660.00	11/30/98

**THE APPLICATION IDENTIFIED ABOVE HAS BEEN EXAMINED AND IS ALLOWED FOR ISSUANCE AS A PATENT. PROSECUTION ON THE MERITS IS CLOSED.**

**THE ISSUE FEE MUST BE PAID WITHIN THREE MONTHS FROM THE MAILING DATE OF THIS NOTICE OR THIS APPLICATION SHALL BE REGARDED AS ABANDONED. THIS STATUTORY PERIOD CANNOT BE EXTENDED.**

**HOW TO RESPOND TO THIS NOTICE:**

- I. Review the SMALL ENTITY status shown above.
  - If the SMALL ENTITY is shown as YES, verify your current SMALL ENTITY status:
    - A. If the status is changed, pay twice the amount of the FEE DUE shown above and notify the Patent and Trademark Office of the change in status, or
    - B. If the status is the same, pay the FEE DUE shown above.
  - If the SMALL ENTITY is shown as NO:
    - A. Pay FEE DUE shown above, or
    - B. File verified statement of Small Entity Status before, or with, payment of 1/2 the FEE DUE shown above.

- II. Part B-Issue Fee Transmittal should be completed and returned to the Patent and Trademark Office (PTO) with your ISSUE FEE. Even if the ISSUE FEE has already been paid by charge to deposit account, Part B-Issue Fee Transmittal should be completed and returned. If you are charging the ISSUE FEE to your deposit account, section 4b of Part B-Issue Fee Transmittal should be completed and an extra copy of the form should be submitted.
- III. All communications regarding this application must give application number and batch number. Please direct all communications prior to issuance to Box ISSUE FEE unless advised to the contrary.

**IMPORTANT REMINDER: Utility patents issuing on applications filed on or after Dec. 12, 1980 may require payment of maintenance fees. It is patentee's responsibility to ensure timely payment of maintenance fees when due.**

PATENT AND TRADEMARK OFFICE COPY

**PART B—ISSUE FEE TRANSMITTAL**

*John O'Sullivan*  
*11-30*

Complete and mail this form, together with applicable fees, to: **Box ISSUE FEE Assistant Commissioner for Patents, Washington, D.C. 20231**

**MAILING INSTRUCTIONS:** This form should be used for transmitting the ISSUE FEE. Blocks 1 through 4 should be completed where appropriate. All further correspondence including the Issue Fee Receipt, the Patent, advance orders and notification of maintenance fees will be mailed to the current correspondence address as indicated unless corrected below or directed otherwise in Block 1, by (a) specifying a new correspondence address; and/or (b) indicating a separate "FEE ADDRESS" for maintenance fee notifications.

Note: The certificate of mailing below can only be used for domestic mailings of the Issue Fee Transmittal. This certificate cannot be used for any other accompanying papers. Each additional paper, such as an assignment or formal drawing, must have its own certificate of mailing.

**CURRENT CORRESPONDENCE ADDRESS** (Note: Legibly mark up with any corrections or use a separate sheet of paper.)  
**CHARLES C. CARY**  
WILSON SONSINI GOODRICH & ROSATI  
650 PAGE MILL ROAD  
PALO ALTO CA 94304-1050

**RECEIVED**  
Publishing Division  
LM4170831  
**NOV 17 1998**

I hereby certify that this Issue Fee Transmittal is being deposited with the United States Postal Service with sufficient postage for first class mail in an envelope addressed to the Box Issue Fee address above on the date indicated below.

**Donna L. Hengst** (Depositor's name)  
*Donna L. Hengst* (Signature)  
**11/13/98** (Date)

APPLICATION NO.	FILING DATE	TOTAL CLAIMS	EXAMINER AND GROUP ART. UNIT	DATE MAILED
08/727,083	10/08/96	018	HONG, S	08/31/98
First Named Applicant	BORMAN, GILBERT			

**TITLE OF INVENTION:** METHOD AND APPARATUS FOR RETRIEVING DATA FROM A NETWORK USING LOCATION IDENTIFIERS (AS AMENDED)

ATTY'S DOCKET NO.	CLASS-SUBCLASS	BATCH NO.	APPLN. TYPE	SMALL ENTITY	FEE DUE	DATE DUE
3	18041.701	707-501.000	140 UTILITY	YES	\$660.00	11/30/98

1. Change of correspondence address or indication of "Fee Address" (37 CFR 1.363). Use of PTO form(s) and Customer Number are recommended, but not required.  
 Change of correspondence address (or Change of Correspondence Address form PTO/SB/122) attached.  
 "Fee Address" indication (or "Fee Address" indication form PTO/SB/47) attached.

2. For printing on the patent front page, list:  
(1) the names of up to 3 registered patent attorneys or agents OR, alternatively, (2) the name of a single firm (having as a member a registered attorney or agent) and the names of up to 2 registered patent attorneys or agents. If no name is listed, no name will be printed.  
*Wilson Sonsini Goodrich Rosati Paul Davis Charles C. Cary*

3. ASSIGNEE NAME AND RESIDENCE DATA TO BE PRINTED ON THE PATENT (print or type):  
**PLEASE NOTE:** Unless an assignee is identified below, no assignee data will appear on the patent. Inclusion of assignee data is only appropriate when an assignment has been previously submitted to the PTO or is being submitted under separate cover. Completion of this form is NOT a substitute for filing an assignment.  
(A) NAME OF ASSIGNEE: *TENRETH DYNAMICS, INC.*  
(B) RESIDENCE (CITY & STATE OR COUNTRY): *Southfield, MI*  
Please check the appropriate assignee category indicated below (will not be printed on the patent):  
 Individual  corporation or other private group entity  government

4a. The following fees are enclosed (make check payable to Commissioner of Patents and Trademarks):  
 Issue Fee  
 Advance Order - # of Copies \_\_\_\_\_  
4b. The following fees or deficiency in these fees should be charged to:  
DEPOSIT ACCOUNT NUMBER *23-2415*  
(ENCLOSE AN EXTRA COPY OF THIS FORM)  
 Issue Fee  
 Advance Order - # of Copies *310*

The COMMISSIONER OF PATENTS AND TRADEMARKS IS requested to apply the Issue Fee to the application identified above:  
(Authorized Signature) *[Signature]* (Date) *11/18/98*

NOTE: The Issue Fee will not be accepted from anyone other than the applicant, a registered attorney or agent, or the assignee or other party in interest as shown by the records of the Patent and Trademark Office.

**Burden Hour Statement:** This form is estimated to take 0.2 hours to complete. Time will vary depending on the needs of the individual case. Any comments on the amount of time required to complete this form should be sent to the Chief Information Officer, Patent and Trademark Office, Washington, D.C. 20231. DO NOT SEND FEES OR COMPLETED FORMS TO THIS ADDRESS. SEND FEES AND THIS FORM TO: Box Issue Fee, Assistant Commissioner for Patents, Washington D.C. 20231.

Under the Paperwork Reduction Act of 1995, no persons are required to respond to a collection of information unless it displays a valid OMB control number.

12/07/1998 MTHA11 00000071 08727085  
01 FC:242 605.00 DP  
02 FC:561 30.00 DP  
Refund Ref: 12/07/1998 MTHA11 0000069495  
CHECK Refund Total: \$25.00

TRANSMIT THIS FORM WITH FEE

OK

HICU

RECEIVED  
Publishing Division

NOV-17 1998

11

H.P.V.

**CERTIFICATE OF MAILING:** I hereby certify that this correspondence is being deposited with the United States Postal Service with sufficient postage as first class mail in an envelope addressed to: Assistant Commissioner for Patents, Washington, D.C. 20231, on: November 13, 1998.

Donna L. Hengst  
Donna L. Hengst

**Patent**  
**Attorney's Docket No. 18041.701**

**IN THE UNITED STATES PATENT AND TRADEMARK OFFICE**

In re application of	)	
	)	Examiner: S. Hong
Gilbert Borman et al.	)	
	)	
Serial No.: 08/727,085	)	Group Art Unit: 2776
	)	
Filing Date: October 8, 1996	)	Batch No.: I40
	)	
For: METHOD AND APPARATUS FOR	)	
RETRIEVING DATA FROM A NETWORK	)	
USING LOCATION IDENTIFIERS	)	
(AS AMENDED)	)	

**TRANSMITTAL OF FORMAL DRAWINGS**

Assistant Commissioner for Patents  
Washington, D.C. 20231

**ATTN: OFFICIAL DRAFTSMAN**

Sir:

In response to the Notice of Allowance and Issue Fee Due date of August 31, 1998, please substitute the enclosed 14 sheets of formal drawings for the informal drawings previously filed with respect to the above-identified patent application.

Respectfully submitted,  
WILSON, SONSINI, GOODRICH & ROSATI

By: Charles C. Cary  
Charles C. Cary  
Registration No. 36,764

650 Page Mill Road  
Palo Alto, CA 94304  
(650) 493-9300  
Date: November 13, 1998

APPROVED	O.G. FIG.	
BY	CLASS	SUBCLASS
DRAFTSMAN		

5890172

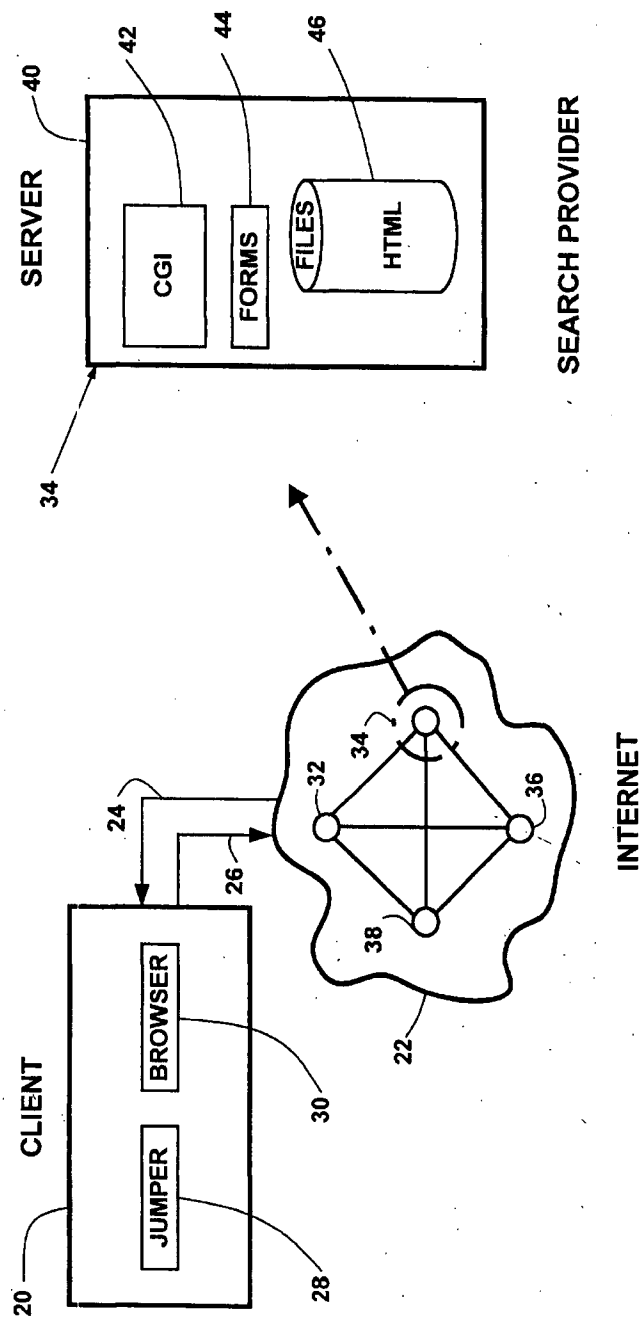


FIG. 1

APPROVED	O.G. FIG.	
BY	CLASS	SUBCLASS
DRAFTSMAN		

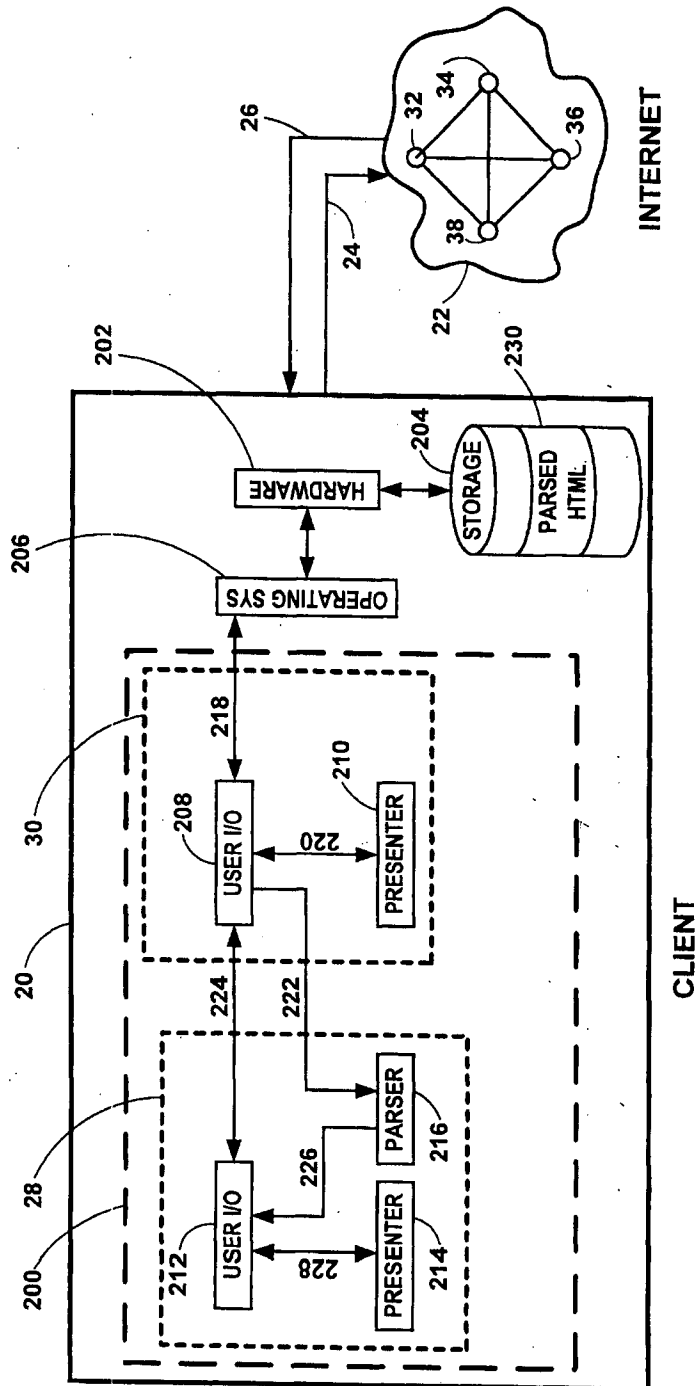


FIG. 2

APPROVED	O.G. FIG.	
BY	CLASS	SUBCLASS
DRAFTSMAN		

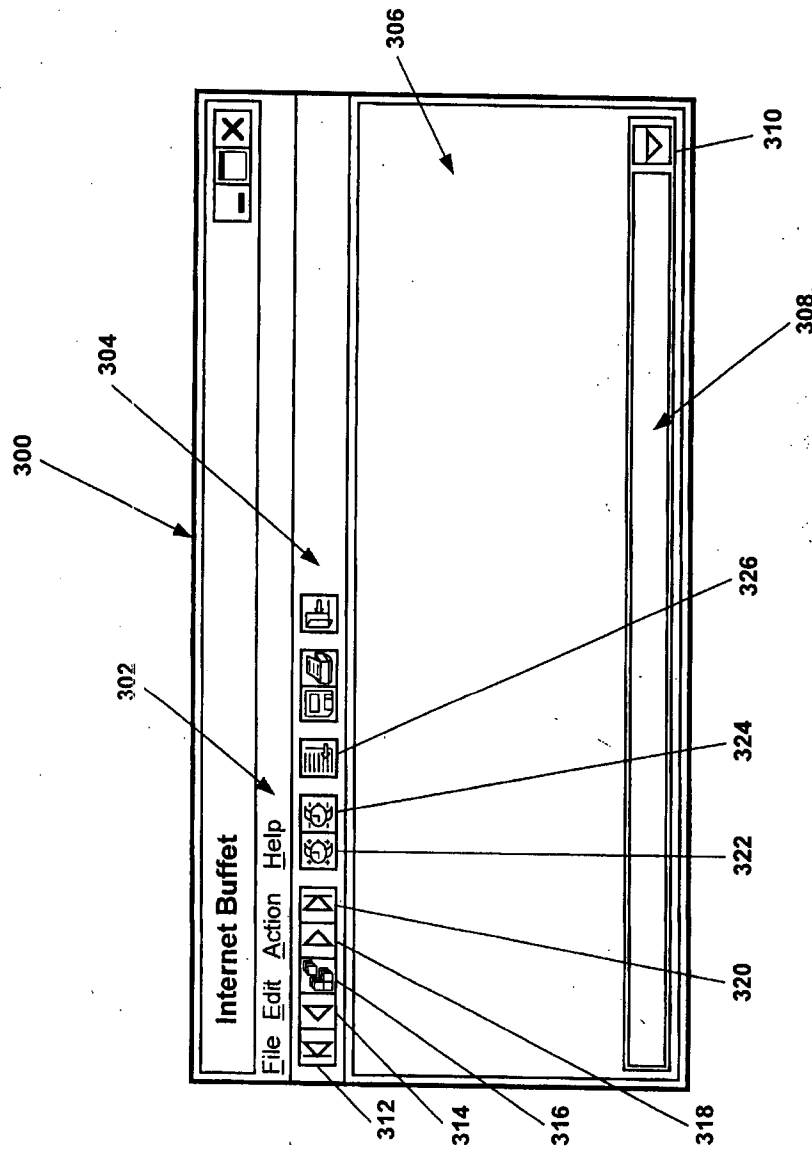
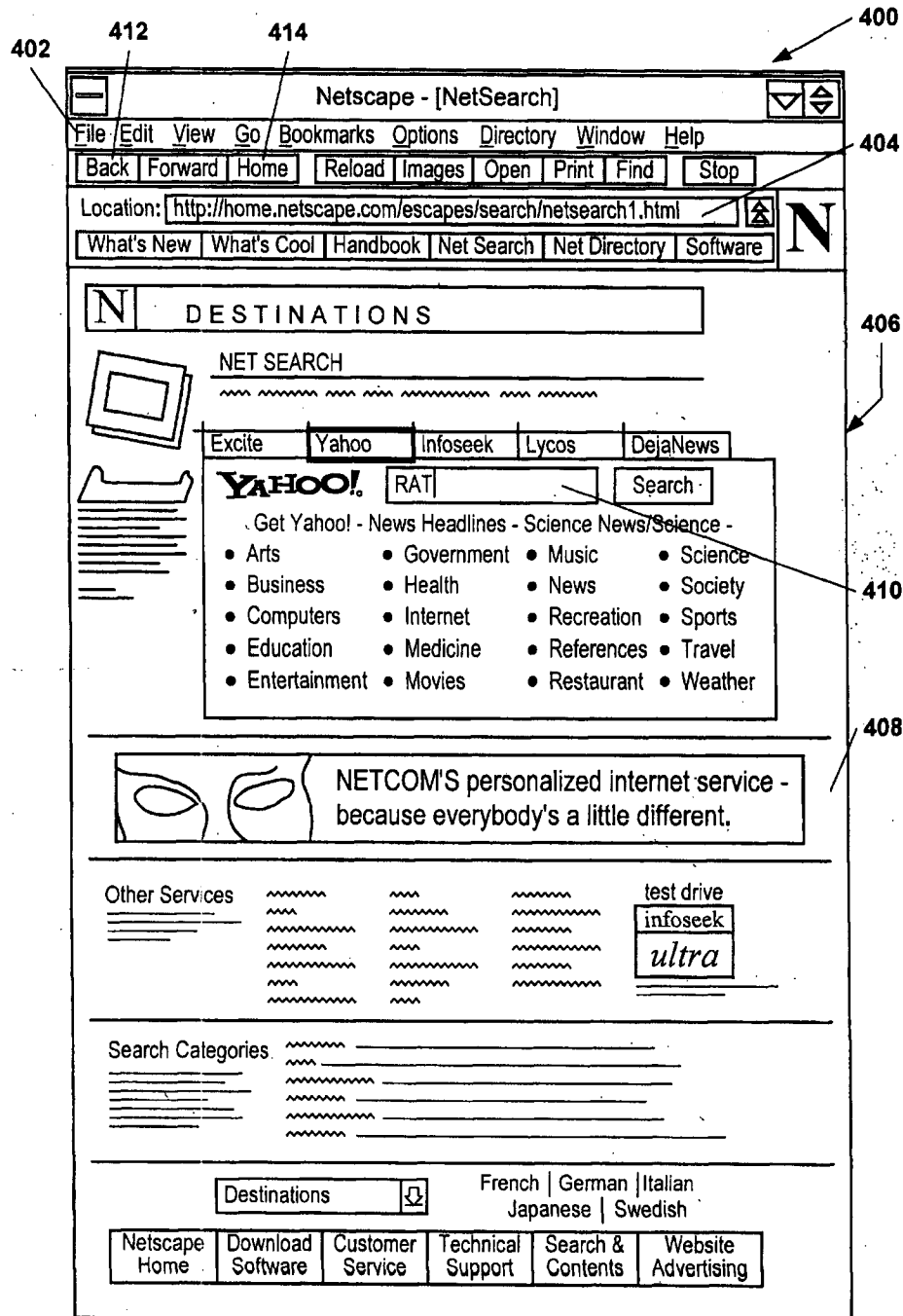


FIG. 3

APPROVED	O.G. FIG.	
BY	CLASS	SUBCLASS
DRAFTSMAN		



(PRIOR ART)  
FIG. 4

APPROVED	O.G. FIG.	
BY	CLASS	SUBCLASS
DRAFTSMAN		

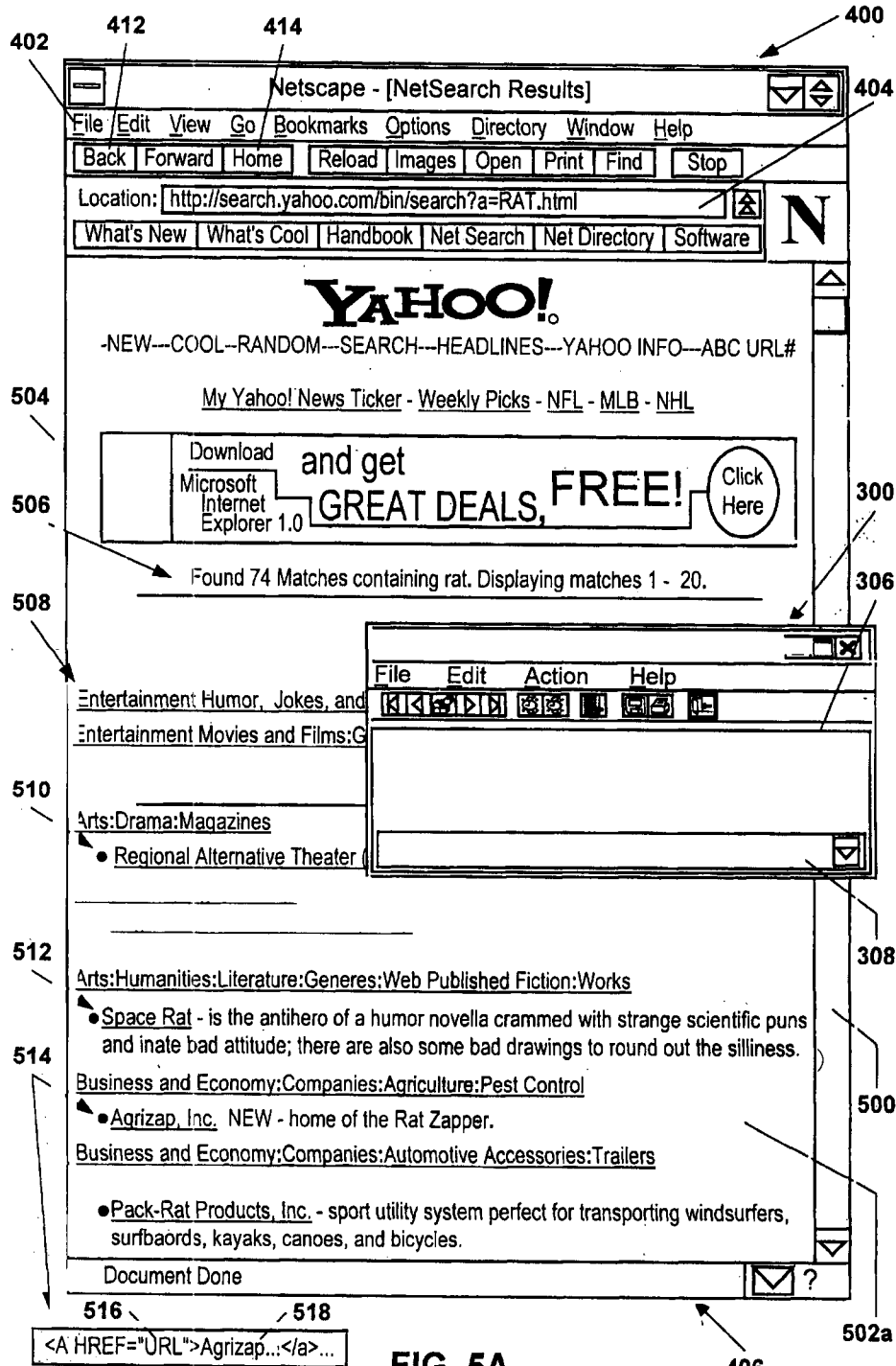


FIG. 5A



APPROVED	O.G. FIG.	
BY	CLASS	SUBCLASS
DRAFTSMAN		

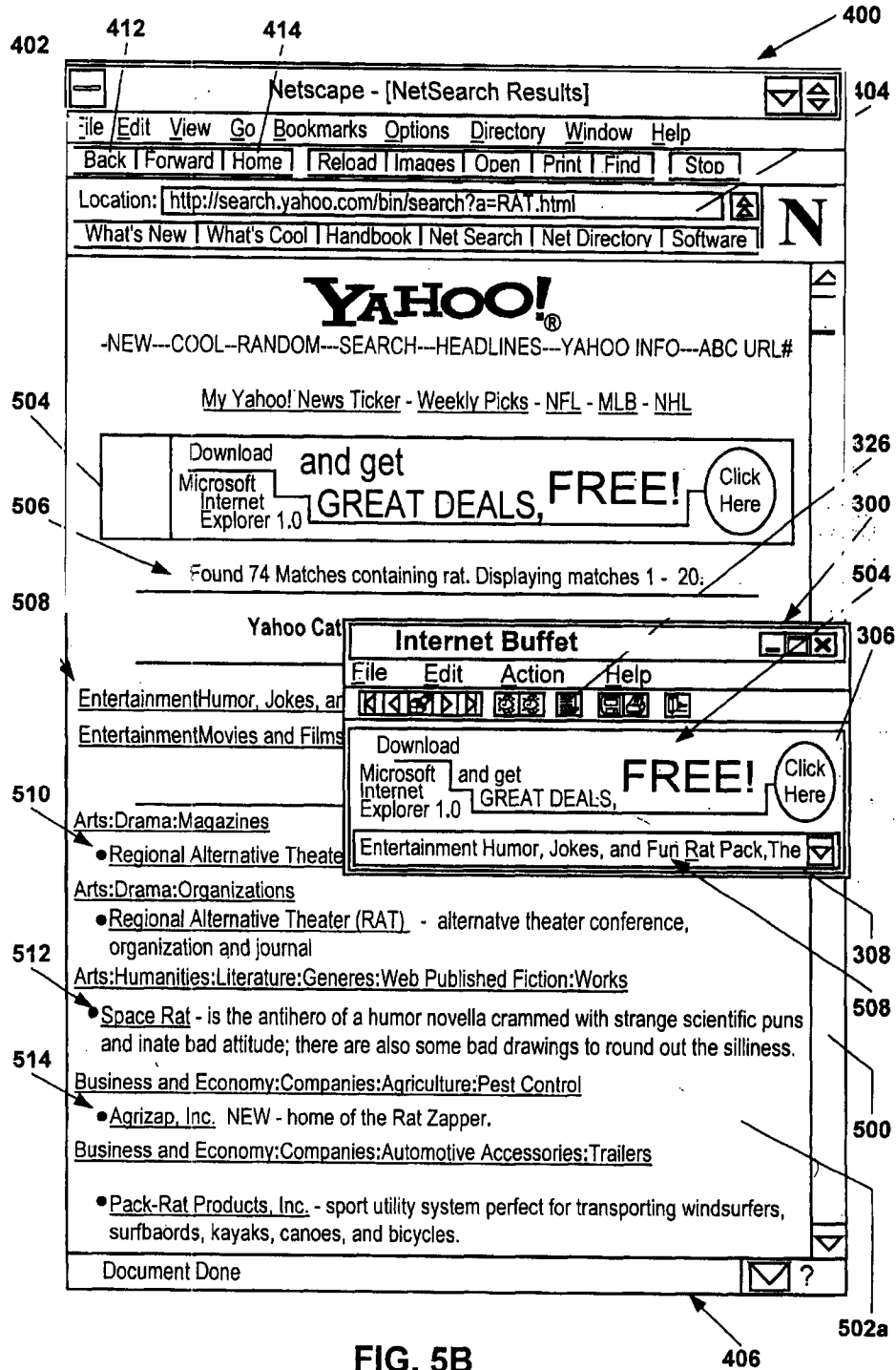


FIG. 5B

APPROVED	O.G. FIG.	
BY	CLASS	SUBCLASS
DRAFTSMAN		

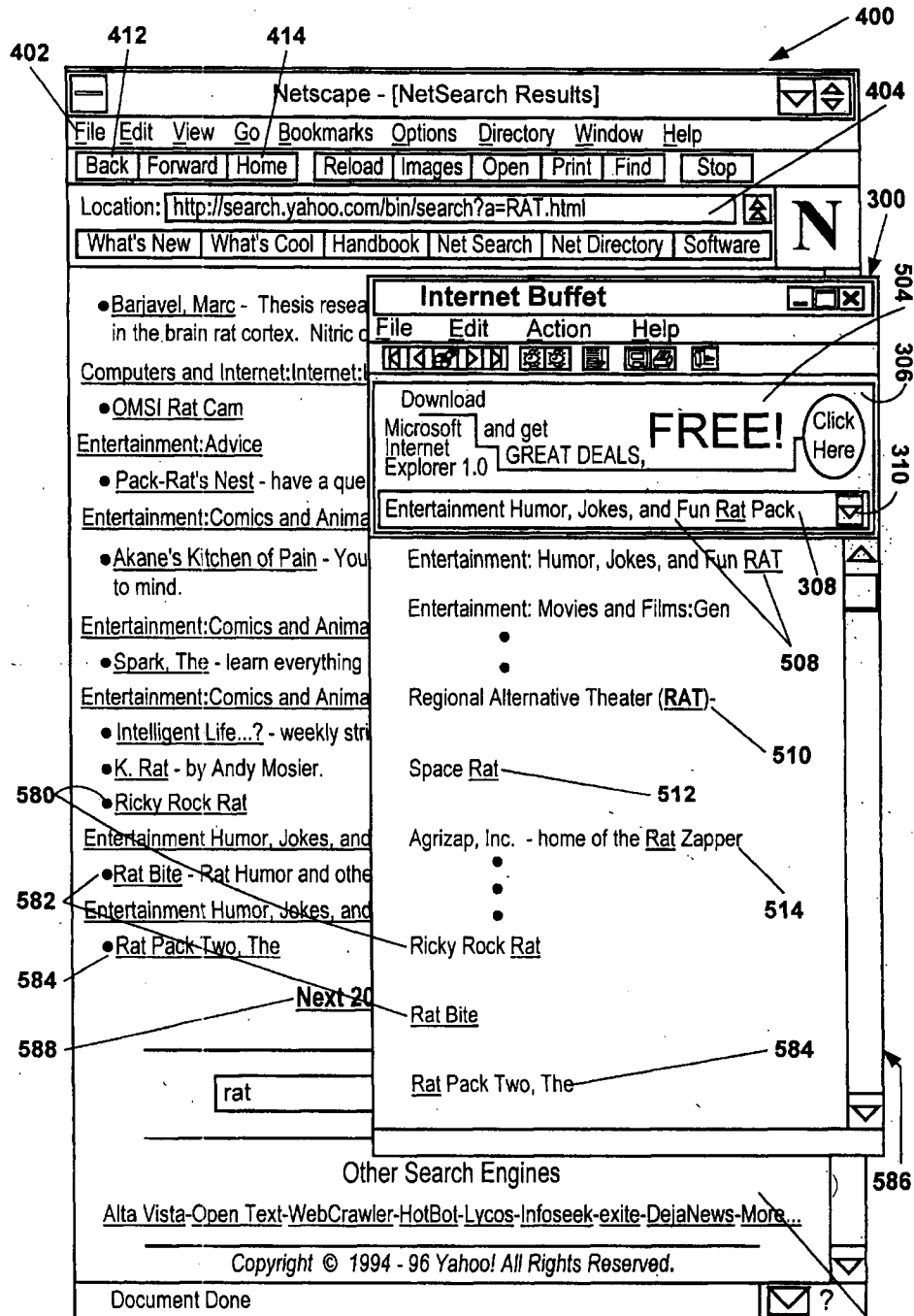


FIG. 5C

APPROVED	O.G. FIG.	
BY	CLASS	SUBCLASS
DRAFTSMAN		

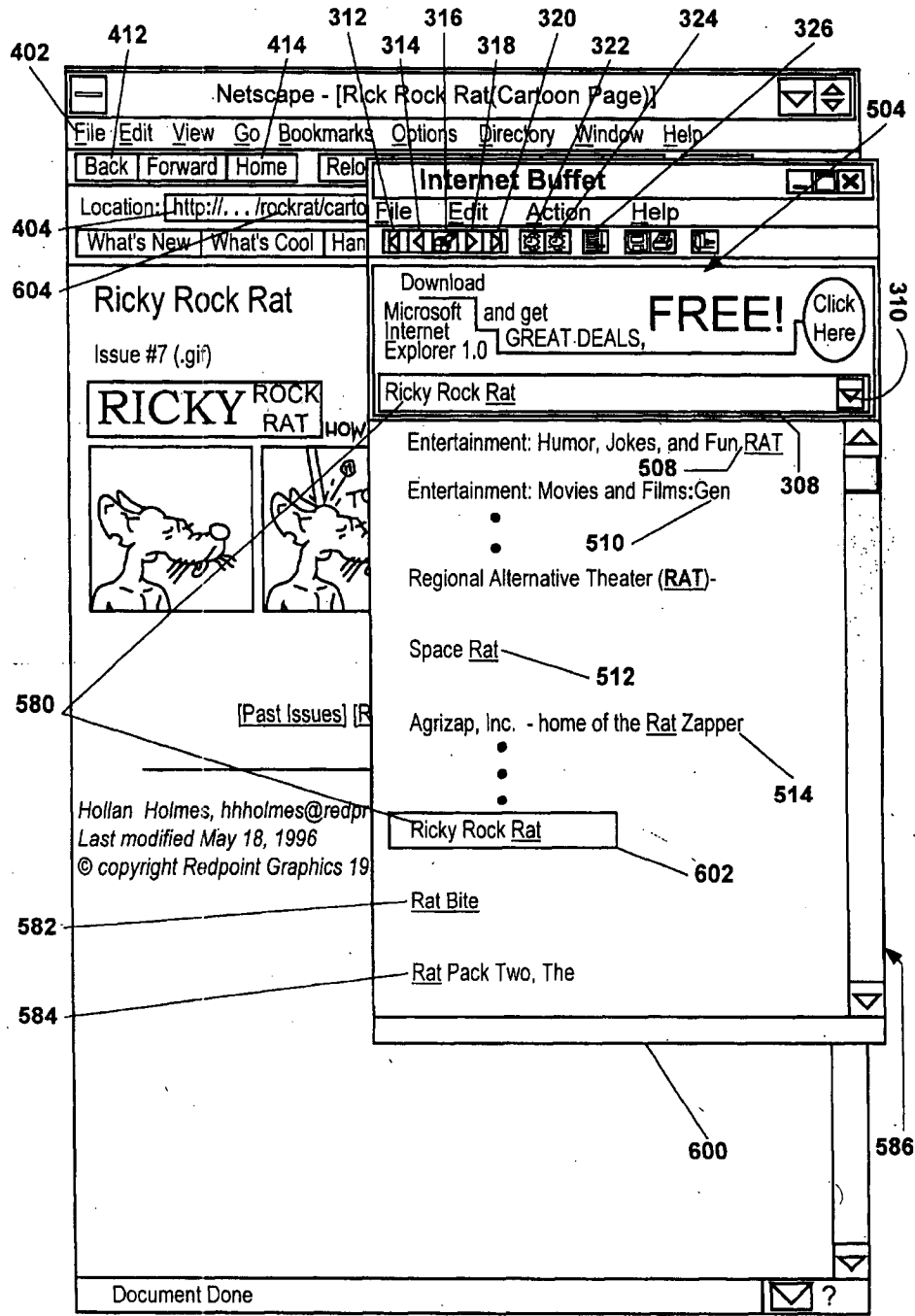
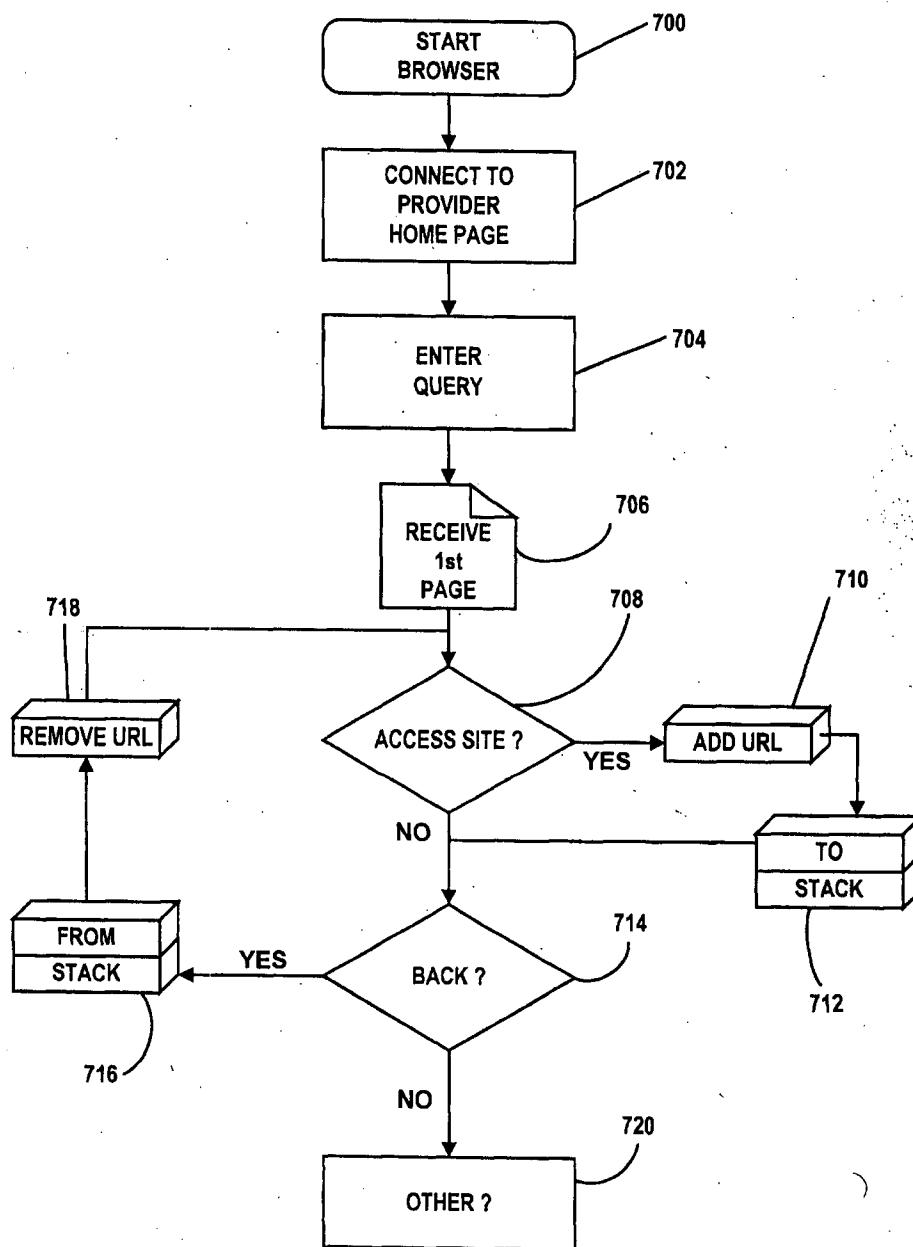


FIG. 6

APPROVED	O.G. FIG.	
BY	CLASS	SUBCLASS
DRAFTSMAN		



(Prior Art)  
FIG. 7

APPROVED	O.G. FIG.	
BY	CLASS	SUBCLASS
DRAFTSMAN		

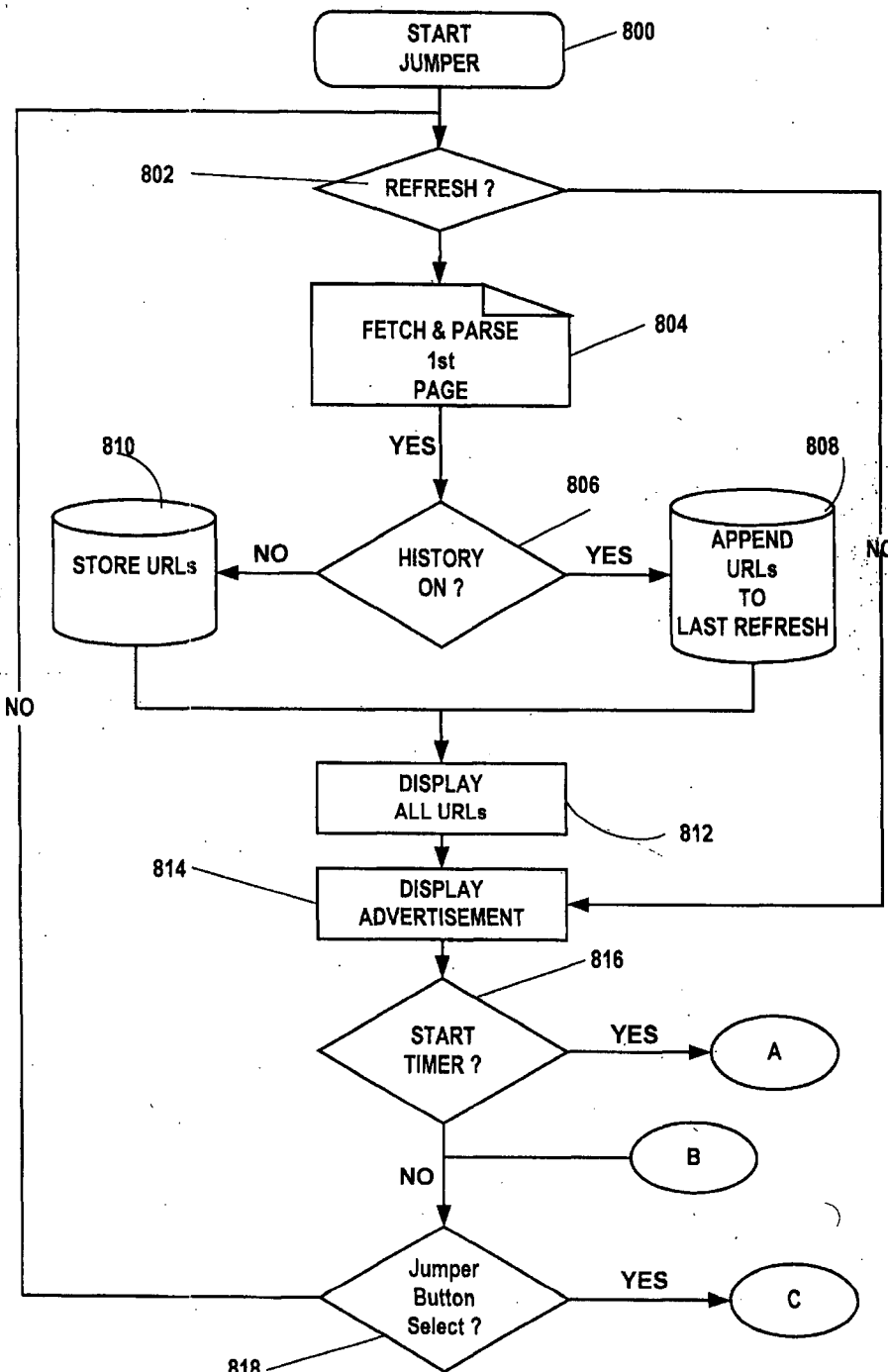


FIG. 8A

APPROVED	O.G. FIG.	
BY	CLASS	SUBCLASS
DRAFTSMAN		

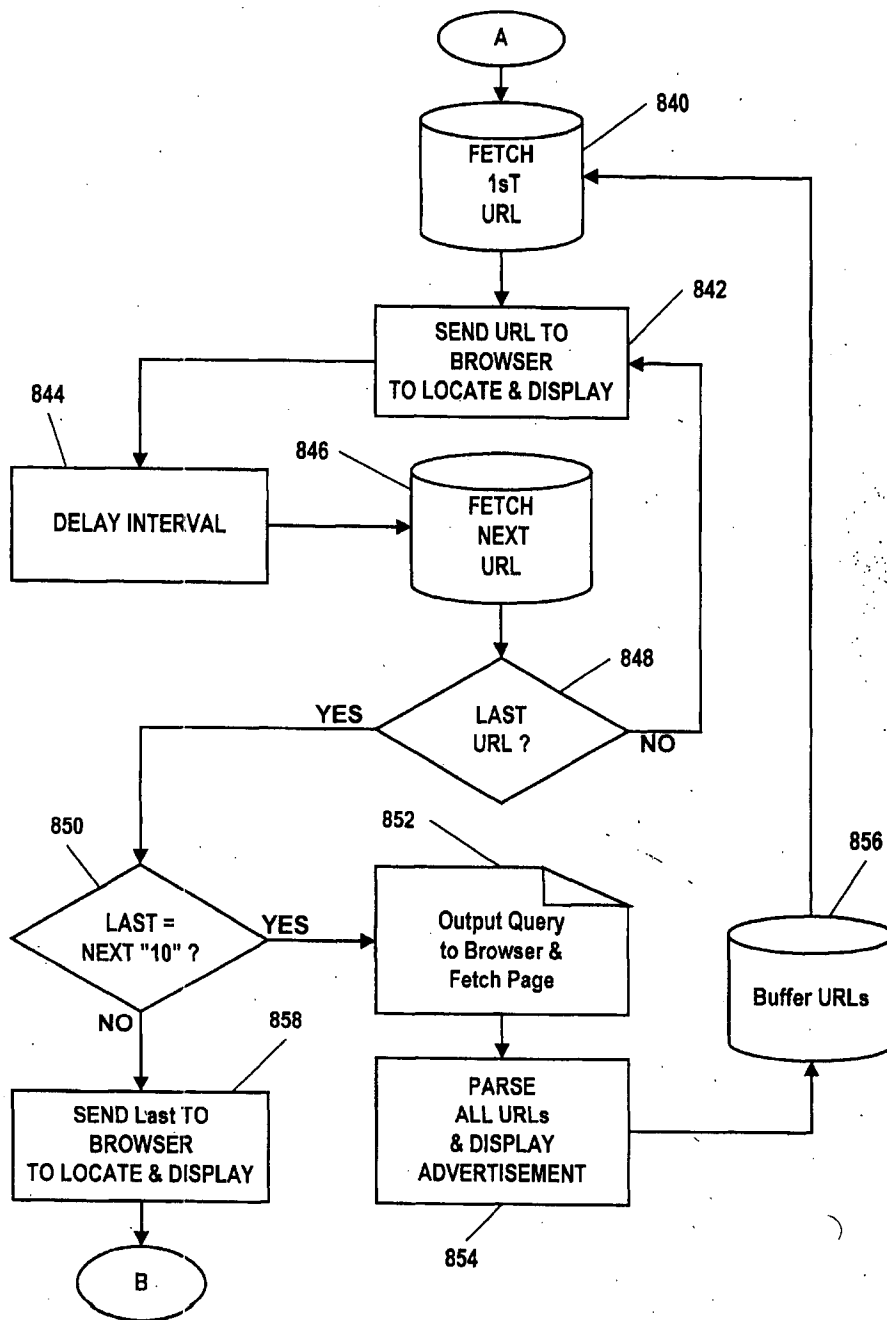


FIG. 8B

APPROVED	O.G. FIG.	
BY	CLASS	SUBCLASS
DRAFTSMAN		

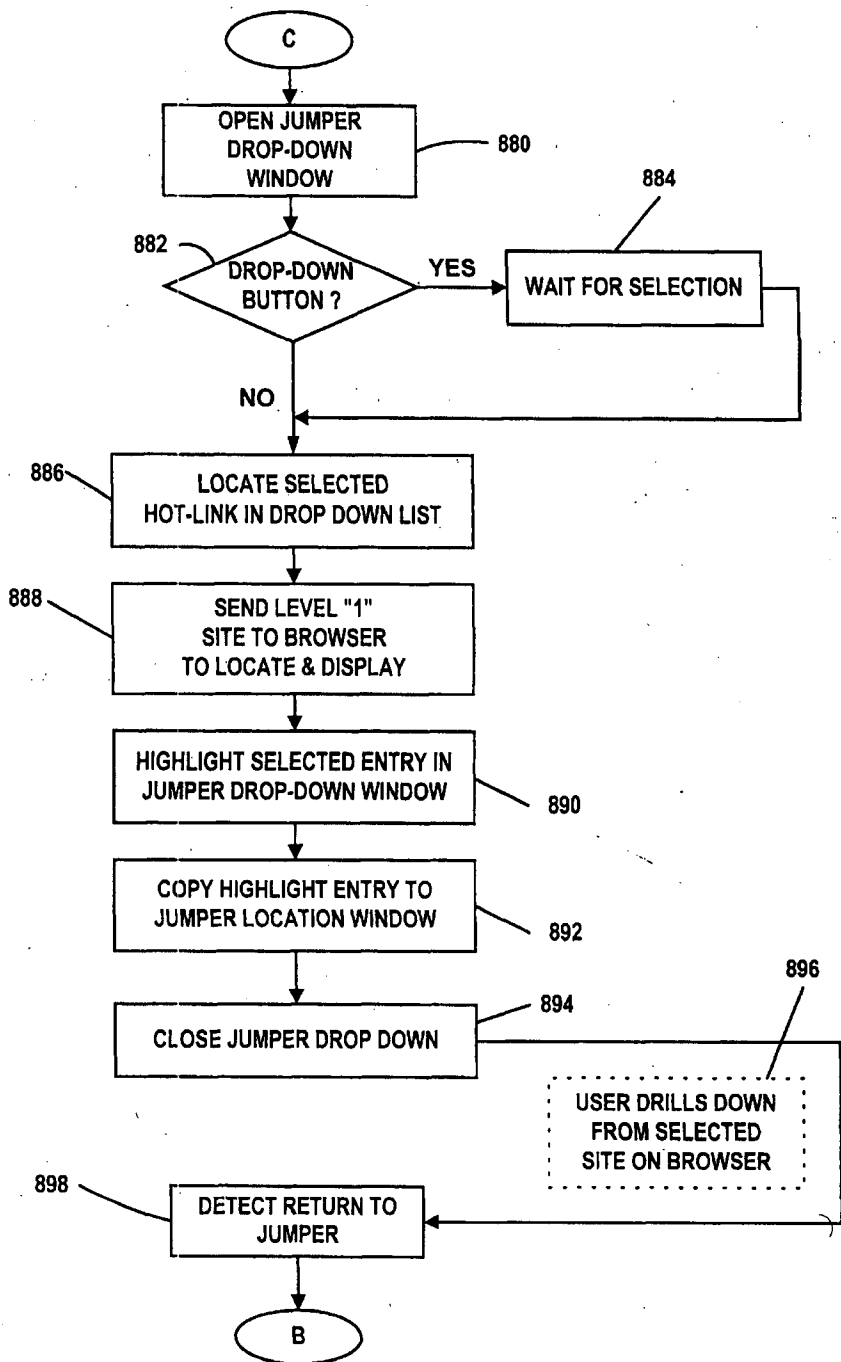
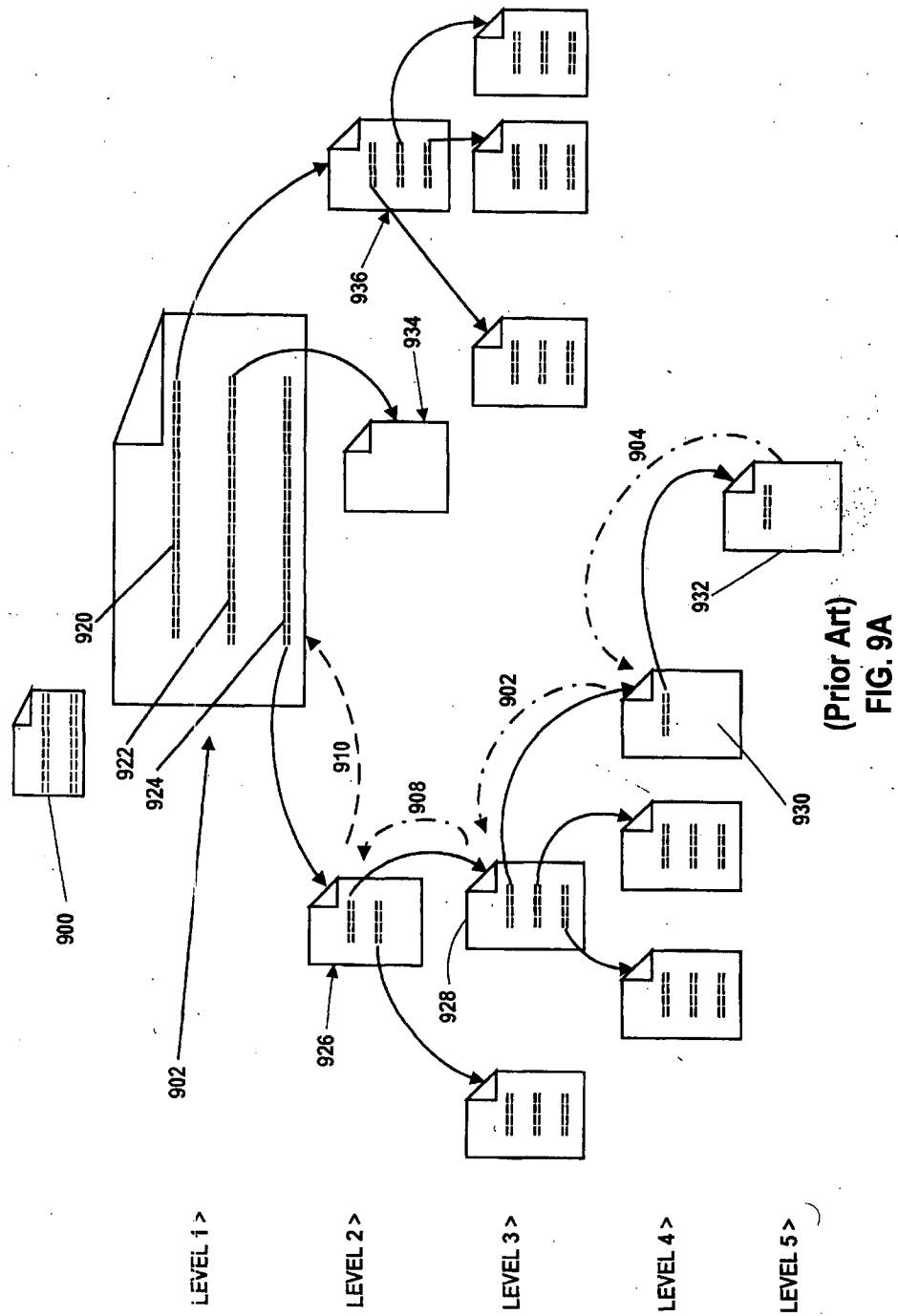


FIG. 8C

APPROVED	O.G. FIG.	
BY	CLASS	SUBCLASS
DRAFTSMAN		





APPROVED	O.G. FIG.	
BY	CLASS	SUBCLASS
DRAFTSMAN		

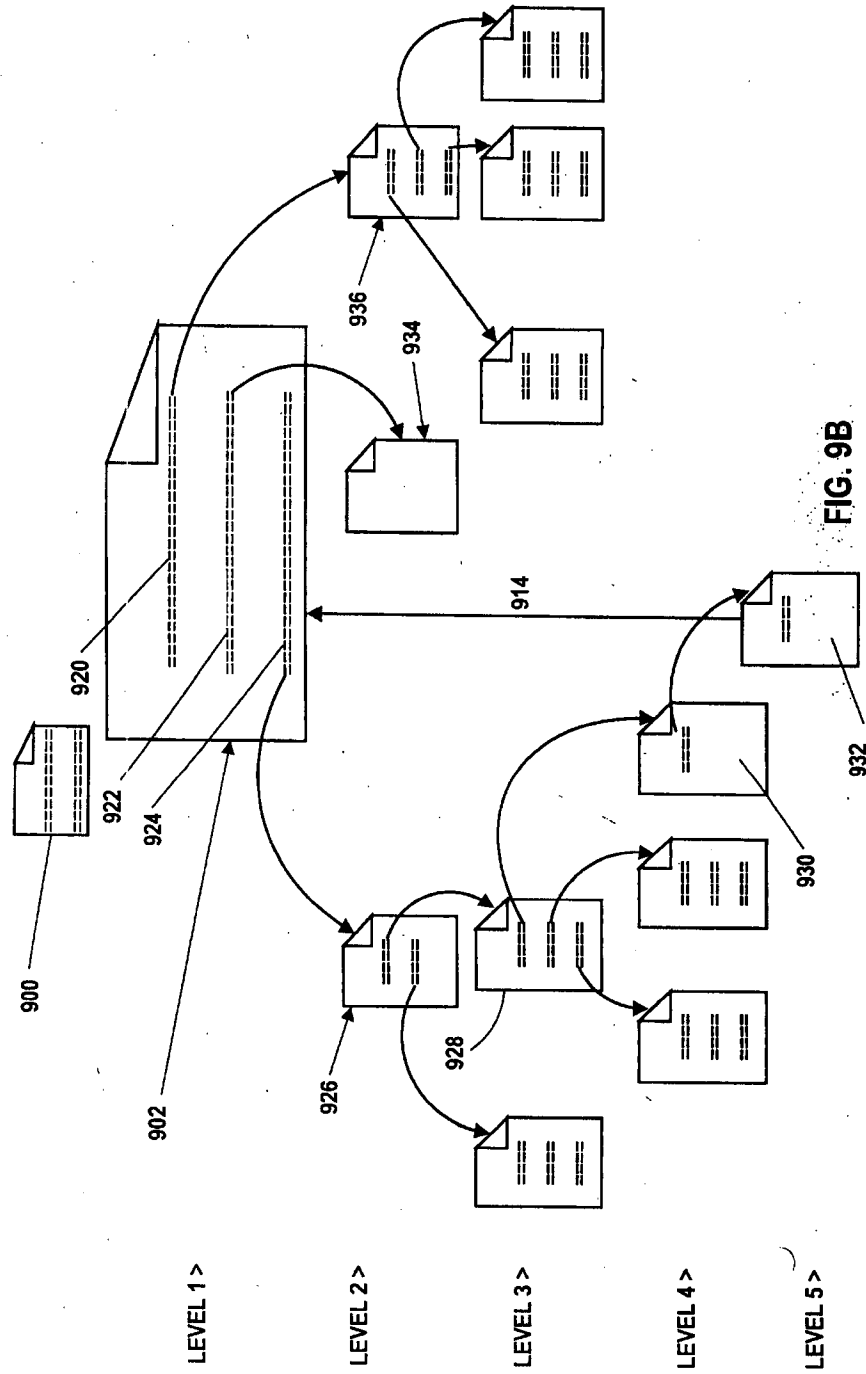


FIG. 9B

The  
United  
States  
of  
America



PTO UTILITY GRANT

Paper Number 9

**The Commissioner of Patents  
and Trademarks**

*Has received an application for a patent for a new and useful invention. The title and description of the invention are enclosed. The requirements of law have been complied with, and it has been determined that a patent on the invention shall be granted under the law.*

*Therefore, this*

**United States Patent**

*Grants to the person(s) having title to this patent the right to exclude others from making, using, offering for sale, or selling the invention throughout the United States of America or importing the invention into the United States of America for the term set forth below, subject to the payment of maintenance fees as provided by law.*

*If this application was filed prior to June 8, 1995, the term of this patent is the longer of seventeen years from the date of grant of this patent or twenty years from the earliest effective U.S. filing date of the application, subject to any statutory extension.*

*If this application was filed on or after June 8, 1995, the term of this patent is twenty years from the U.S. filing date, subject to an statutory extension. If the application contains a specific reference to an earlier filed application or applications under 35 U.S.C. 120, 121 or 365(c), the term of the patent is twenty years from the date on which the earliest application was filed, subject to any statutory extension.*

*Bruce Lehman*  
Commissioner of Patents and Trademarks

*Thomas E. Stawley Jr.*  
Attest

Form PTO-1584 (Rev. 2/07)

08 727085

PATENT APPLICATION SERIAL NO. \_\_\_\_\_

U.S. DEPARTMENT OF COMMERCE  
PATENT AND TRADEMARK OFFICE  
FEE RECORD SHEET

PTO-1556  
(5/87)



PATENT APPLICATION FEE DETERMINATION RECORD Effective October 1, 1996					Application or Docket Number <i>08/727085</i>					
<b>CLAIMS AS FILED - PART I</b>										
(Column 1)			(Column 2)		SMALL ENTITY		OR		OTHER THAN SMALL ENTITY	
FOR	NUMBER FILED		NUMBER EXTRA		RATE	FEE			RATE	FEE
BASIC FEE						385.00	OR			770.00
TOTAL CLAIMS	<i>26</i> minus 20 = *		<i>6</i>		x\$11=	<i>66</i>	OR	x\$22=	<i>132</i>	
INDEPENDENT CLAIMS	<i>6</i> minus 3 = *		<i>3</i>		x40=	<i>120</i>	OR	x80=	<i>240</i>	
MULTIPLE DEPENDENT CLAIM PRESENT					+130=		OR	+260=		
* If the difference in column 1 is less than zero, enter "0" in column 2					TOTAL		OR	TOTAL	<i>1142</i>	
<b>CLAIMS AS AMENDED - PART II</b>										
(Column 1)			(Column 2)		SMALL ENTITY		OR		OTHER THAN SMALL ENTITY	
AMENDMENT A	CLAIMS REMAINING AFTER AMENDMENT		HIGHEST NUMBER PREVIOUSLY PAID FOR	PRESENT EXTRA	RATE	ADDITIONAL FEE		RATE	ADDITIONAL FEE	
	Total	*	Minus	**	=			x\$22=		
	Independent	*	Minus	***	=			x80=		
	FIRST PRESENTATION OF MULTIPLE DEPENDENT CLAIM					+130=		OR	+260=	
					TOTAL ADDIT. FEE		OR	TOTAL ADDIT. FEE		
AMENDMENT B	CLAIMS REMAINING AFTER AMENDMENT		HIGHEST NUMBER PREVIOUSLY PAID FOR	PRESENT EXTRA	ADDI-			RATE	ADDITIONAL FEE	
	Total	*	Minus	**	=			x\$22=		
	Independent	*	Minus	***	=			x80=		
	FIRST PRESENTATION OF MULTIPLE DEPENDENT CLAIM					+130=		OR	+260=	
					TOTAL ADDIT. FEE		OR	TOTAL ADDIT. FEE		
AMENDMENT C	CLAIMS REMAINING AFTER AMENDMENT		HIGHEST NUMBER PREVIOUSLY PAID FOR	PRESENT EXTRA	RATE	ADDITIONAL FEE		RATE	ADDITIONAL FEE	
	Total	*	Minus	**	=			x\$22=		
	Independent	*	Minus	***	=			x80=		
	FIRST PRESENTATION OF MULTIPLE DEPENDENT CLAIM					+130=		OR	+260=	
					TOTAL ADDIT. FEE		OR	TOTAL ADDIT. FEE		

Staple Issued Slip Here

105  
101  
ABER 085  
T BOI  
EBAS  
LHI  
N, II  
INUI  
IED  
NE-  
IGN/IE  
IED  
NE-  
N FIL  
claimed  
nditions m  
knowledge  
ES C  
N SON  
AGE M  
ALTO  
NET  
K US  
APPLIC  
PARATEL  
F ALLOV  
UG 3.1  
ISSUE  
je  
06  
Label  
Area  
KOB

POSITION	ID NO.	DATE
CLASSIFIER	#111	10-22-96
EXAMINER	491	12-05-96
TYPIST	351	4-10-97
VERIFIER	277	4-11
CORPS CORR.		
SPEC. HAND	333	4-9-97
FILE MAINT.	854	12-5-96
DRAFTING		

INDEX OF CLAIMS

Claim	Date	
	Final	Original
1	✓	11/11
2	✓	11/11
3	✓	11/11
4	✓	11/11
5	✓	11/11
6	✓	11/11
7	✓	11/11
8	✓	11/11
9	✓	11/11
10	✓	11/11
11	✓	11/11
12	✓	11/11
13	✓	11/11
14	✓	11/11
15	✓	11/11
16	✓	11/11
17	✓	11/11
18	✓	11/11
19	✓	11/11
20	✓	11/11
21	✓	11/11
22	✓	11/11
23	✓	11/11
24	✓	11/11
25	✓	11/11
26	✓	11/11
27		
28		
29		
30		
31		
32		
33		
34		
35		
36		
37		
38		
39		
40		
41		
42		
43		
44		
45		
46		
47		
48		
49		
50		

Claim	Date	
	Final	Original
51		
52		
53		
54		
55		
56		
57		
58		
59		
60		
61		
62		
63		
64		
65		
66		
67		
68		
69		
70		
71		
72		
73		
74		
75		
76		
77		
78		
79		
80		
81		
82		
83		
84		
85		
86		
87		
88		
89		
90		
91		
92		
93		
94		
95		
96		
97		
98		
99		
100		

SYMBOLS  
 ✓ ..... Rejected  
 = ..... Allowed  
 - (Through numeral) Canceled  
 + ..... Restricted  
 N ..... Non-elected  
 I ..... Interference  
 A ..... Appeal  
 O ..... Objected

SEARCHED			
Class	Sub.	Date	Exmr.
707	501 513 514 10 102 104	7/20/98	SSH
345	329 333 335 338 339 340 346		
update search		8/26/98	SSH

SEARCH NOTES		
	Date	Exmr.
Internet WWW search - Search Notes attached	2/24/98	SSH
update search	8/26/98	SSH

INTERFERENCE SEARCHED			
Class	Sub.	Date	Exmr.
707	501 513	8/26/98	SSH
345	339		

CNN Interactive

http://cnn.com/index.htm



custom news

- WORLD
- U.S.
- LOCAL
- WEATHER
- SPORTS
- SCI-TECH
- TRAVEL
- STYLE
- SHOWBIZ
- BOOKS
- HEALTH
- EARTH
- SPECIALS

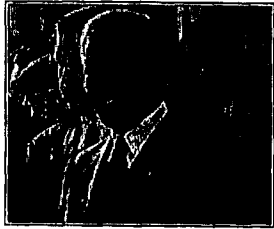
CNN  
allpolitics  
CNN  
EN ESPAÑOL

**CNN** Want to know Nagano? Click here for the best coverage

February 20, 1998 -- Updated 11:57 a.m. EST (1657 GMT)

TEXT - ONLY HOME PAGE  
FASTER EUROPEAN ACCESS

### Annan begins 'sacred' mission in Iraq



(CNN)

With a peaceful settlement of the weapons inspection crisis as his "sacred duty," U.N. Secretary-General Kofi Annan arrived in Baghdad at sundown on Friday on a last-minute mission that could decide whether the standoff will be solved by diplomacy or bombs.

FULL STORY

- Special: Standoff with Iraq



Sinn Fein expelled from peace talks

2 charged with making biological weapons

Lawyer: Reported Jordan-Lewinsky timeline wrong



(AP Photo)

Lipinski outduels Kwan for Olympic gold

**CNN**  
CNN Programming Schedule

- Tune in to CNN
- Tune in to CNN International
- Headline News Weblinks
- Upcoming on IMPACT

That's like getting 142 free pizzas.

party

Advertising information for CNN Web sites

## TOP STORIES



CNN Interactive

http://cnn.com/index.htm

## TOP STORIES

1998  
NAGANO  
OLYMPICS  
ICE SKATING  
LINK OF THE DAY

infoseek  
FIND  
FRIENDS, STORES  
& EMAIL  
EXPLORE

SEARCH  
BOOKS!  
Barnesand  
Noble.com  
BOOK SEARCH

PATHFINDER  
NETWORK  
People  
WARNER  
BROS.  
GOLDFILM  
SPOTLIGHT

### U. S.

- Wedding cake fetches \$26,000 as Windsor auction begins
- Japanese-Americans observe National Day of Remembrance
- In other news...

### NAGANO OLYMPICS

- Czechs sting Canada in scintillating semifinal shootout, will face Russia in finals
- Italy's Compagnoni takes slalom gold
- Germany leads the 4-man bobsled heading to 2-run race for gold
- Jim Kelley: U.S. hockey: 1 win; 0 medals; countless apologies

### ALLPOLITICS

- Mrs. Clinton supports Bush opponent
- INS removes 70 percent more aliens
- Liddy wants contents of bugged conversations made known
- McGovern nominated for U.N. post

### CNNfn

- Ciena shares takes a dive
- Cautious start for the Dow
- Bass brews hotel deal?
- Oil prices ride with Annan

### BOOKS

- Color Bill Clinton! Red, white or blue?
- Nation's largest bookseller charged with child pornography
- The other controversial

### WORLD

- U.N.: \$109 million needed to aid Sudan
- Croatian capital braces for protests
- At least 16 countries offer U.S. support on Iraq
- U.S. wrestlers receive hometown reception from Iranian fans

### CNN/SI

- West unhappy about trade to Vancouver
- CDC issues warning to wrestlers
- Seikaly traded again

### SCI-TECH

- U.S. cities gird for possible chemical attacks

### COMPUTING

- Report: AOL, MCI subpoenaed in Microsoft case
- Busy Signal' survey rates national ISPs

### SPACE

- NASA dodging rumors about ice on the moon
- John Glenn takes spin toward space

### HEALTH

- Radon linked to 21,800 U.S. deaths a year
- Study finds new hormones that affect appetite

### EARTH

- Sifting trash in search of the perfect landfill

2 of 4 2

02/20/98 12:04:00

CNN Interactive

<http://cnn.com/index.htm>

royals of the 20th century

- The Poll: How do you imagine characters?

### SHOWBIZ

- Grandpa Jones, banjo player and 'Hee Haw' Regular, dead at 84
- Testimony begins in Spielberg stalker case

### WEATHER

- Forecast for most of U.S.: Rainy
- Cars crash, homes evacuated in northern California storm
- Rains, flooding wreak havoc in Brazil
- Four-day U.S. forecasts by zip code
- World forecasts

### STANDOFF WITH IRAQ

- Flashback: A multimedia recap of the Gulf War
- For and Against: Where key countries stand
- Interactive Map: Allied forces in the Gulf
- Interactive Map: Where Iraq's neighbors stand

### COMMUNITY

- Will there be a diplomatic resolution to the situation in Iraq?
- Daily news chat 9AM-12AM EST!
- Check out our new BOOKS message boards!

### VIDEO VAULT

- A song on their lips -- and garbage in their hands

### VIEWS

- Mitchell Cartoon: 'Take

### SPECIALS

- A conversation with Benjamin Netanyahu
- The Outspoken Oliphant
- 1998 Grammy Awards: Listen to the music
- El Niño Returns: Meet the trackers
- Black History Month: The story of desegregation

### CUSTOM NEWS

- Florida woman throws baby out window on highway
- McDonald's to offer Beanie Babies again
- Customers gripe about AOL rate hike
- Review: PBS examines Reagan

### TRAVEL

- Travel deals abound amid Asian economic crisis
- Plane's new defibrillator saves passenger
- U.S. issues travel advisory on West Bank, Gaza
- Destinations: Landlubbing writer takes to the Gulf coast

### FRINGE

- Wannabe a wannabe? Here's how

### WHEELS

- America continues its love affair with the pickup

### 3-D GLOBE

- Spain's literacy rate, average life span and much more
- Which year did

CNN Interactive

<http://cnn.com/index.htm>

- [out Saddam?'](#)
- [AllPolitics: Pundits and Prose](#)

[Which year did Bangladesh and tribal rebels sign a landmark accord?](#)

### QUICK NEWS

- [Get daily updates via e-mail](#)

- [3-D Globe highlights trouble spots](#)



### FEEDBACK

- [What you said!](#)

### PAGER

- [Get automatic updates](#)

### JOBS

- [PeopleSoft Software Engineer](#)
- [CNN/SI Artist/Web designer](#)
- [CNN/SI Software Developers](#)
- [Software developers](#)
- [CNN Interactive Interns](#)

### CUSTOM NEWS

- [Register for your personal news](#)

### AIR MEDIA

- [Download a free demo](#)

### POINTCAST

- [Download it free!](#)



[Back to the top](#)

© 1998 Cable News Network, Inc.  
All Rights Reserved.

[Terms under which this service is provided to you.](#)

404 4

02/000314:00

CNN - Earth

http://cnn.com/EARTH



custom news

- WORLD
- U.S.
- LOCAL
- WEATHER
- SPORTS
- SCI-TECH
- TRAVEL
- STYLE
- SHOWBIZ
- BOOKS
- HEALTH
- EARTH ←
- SPECIALS

CNN  
allpolitics  
CNN  
EN ESPAÑOL

# EARTH

M A I N P A G E

El Niño returns  
Message Board: El Niño winter

## Sifting trash in search of the perfect landfill



(Courtesy ENNO)

A University of Wisconsin-Madison professor is digging through the trash to find out what happens in landfills. Robert Ham believes well-designed landfills can be tools for recycling, rather than tombs that harbor trash for generations.

[FULL STORY](#)

*Win a 1999 Mercury Cougar*

Click Here and you could win one for you and a friend.



## Society loses in clash of science, politics



(Courtesy USGS)

When politics and science clash, science and society are the losers, said a noted aquatic ecologist at the annual meeting of the American Association for the Advancement of Science in Philadelphia.

[FULL STORY](#)

infoseek  
EXPLORE  
bigyellow

## Countries join together to save the tiger



Webish Network

CNN - Earth

<http://cnn.com/EARTH>



### to save the tiger

The Chinese Year of the Tiger is upon us, and last week tiger conservationists from around the world wrapped up a conference in Dallas with the message that although tiger populations are severely endangered, countries are joining together in the fight to save the wild cats from extinction.



Courtesy University

[FULL STORY](#)

### Sea lion pups struggle against El Niño's wrath

Sea lion pups are being pounded by El Niño-driven winter storms drenching the California coastline.



(CNN)

[FULL STORY](#)

### El Niño brings flamingos back to lake in Kenya

El Niño has brought floods, blizzards and other types of severe weather to all parts of the globe.



(Reuters)

[FULL STORY](#)



Air times		
	Sat. (ET)	Sun. (ET)
CNN	5:30a	3:00p
CNNI USA	11:30a	7:30p
CNNI Euro/Latin	11:30a	7:30p & 11:30a (Mon)
CNNI Asia	11:30a	7:30p

CNN - Earth

<http://cnn.com/EARTH>

## MORE STORIES

---

- Study: Mercury in Everglades comes from distant sources
  - Lynx to be protected as endangered species
  - Bald chimp snaps, crackles, pops his way to new coat
  - Manatees are freed from prison of drainage pipe
  - Orangutans, saved from fire, return to freedom
  - Study: Africa apes use symbols to mark jungle trails
  - Federal judges refuse to block logging of pines in Minnesota
  - Wounded falcon may never fly again
  - Salt mine in whale breeding area raises concern
  - Sri Lankan killer elephant gets a new home
  - King penguin chick makes debut in Omaha
  - Bob the lobster, spared in Denver, could die in Boston
  - El Niño predictions on target -- so far
  - Rescuers work frantically to save beached whales
  - Lustful lizards have to bite the bullet
- 

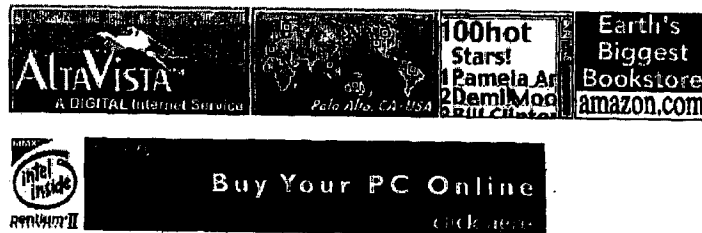


**BACK TO TOP**

© 1998 Cable News Network, Inc.  
All Rights Reserved.

Terms under which this service is provided to you.

AltaVista: Simple Query computer graphics

<http://www.altavista.digital.com/c...+graphics&navig10.x=7&navig10.y=>

Business Search |  People Search |  Translations |  Free eMail |  Browse by Subject

Search  for documents in

About 3195851 documents match your query.

[Help](#) . [Preferences](#) . [New Search](#) . [Advanced Search](#)
[Click to find related books at amazon.com](#)

11. **Computer Vision, Graphics, and Image Processing, volume me 48 (1989)**  
 Computer Vision, Graphics, and Image Processing, volume 48 (1989), number 1. Hsiao, J.Y. and A.A. Sawchuk, Unsupervised textured image segmentation using...  
 <http://www.ph.tn.tudelft.nl/PRInfo/volumes/Computer.Vision.,.Graphics.,.and.Image.Processing.48.h> - size 2K - 20-Dec-97 - English - Translate
12. **Santa Monica Chamber Directory - Computer - Graphics**  
 Computer - Graphics. DSL IMAGING INC 11022 SANTA MONICA BL #100, LOS ANGELES, CA, 90025 (310)479-2826, Fax: (310)479-7966. GRAPHICAL PLANET 1530A...  
 <http://www.smchamber.com/directory/class/Computer---Graphics.html> - size 1K - 16-Dec-97 - English - Translate
13. **35 West Computer Graphics Page**  
 Computer Graphic Sample by 35 West Productions  
 <http://www.35west.com/om3big.html> - size 1K - 20-Dec-97 - English - Translate
14. **Computer Vision, Graphics, and Image Processing, volume me 52 (1990)**  
 Computer Vision, Graphics, and Image Processing, volume 52 (1990), number 1. Pridmore, T.P., J.E.W. Mayhew, and J.P. Frisby, Exploiting image-plane data...  
 <http://www.ph.tn.tudelft.nl/PRInfo/volumes/Computer.Vision.,.Graphics.,.and.Image.Processing.52.h> - size 4K - 20-Dec-97 - English - Translate
15. **The Graphics/Games/Computer & CAD SITE**  
 Come Join the FUN at this site.  
 <http://www.inil.com/users/ccarr/> - size 6K - 13-Dec-97 - English - Translate
16. **Computer Vision, Graphics, and Image Processing, volume me 46 (1989)**  
 Computer Vision, Graphics, and Image Processing, volume 46 (1989), number 1. Bajcsy, R. and S. Kovacic, Multiresolution elastic matching, pp. 1-21....  
 <http://www.ph.tn.tudelft.nl/PRInfo/volumes/Computer.Vision.,.Graphics.,.and.Image.Processing.46.h> - size 2K - 20-Dec-97 - English - Translate

AltaVista: Simple Query computer graphics

http://www.altavista.digital-com/c...+graphics&navi10.x=7&navi10.y=

17. **Computer Graphics**

GRAPHICS AT TRANSVIDEO To complement our post-production capabilities, we have a wide range computer graphics production services. Along with what we have.

[http://www.transvideo.com/graphics\\_idx.html](http://www.transvideo.com/graphics_idx.html) - size 4K - 4-Dec-97 - English - Translate

18. **Computer Graphics Service Documentation**

<http://hlhp1.physik.uni-ulm.de/GP/> - size 308 bytes - 10-Mar-97

19. **AZTEK Computer Graphics**

ACT-UP. A lot of logos and animations have been released for ActUp and Positiv Evolution. These movies were projected on giants screens during parties....

<http://soleil.bart.fr/~aztek/actupeng.html> - size 4K - 20-Dec-97 - English - Translate

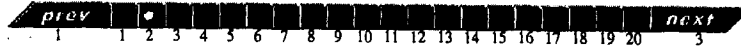
20. **Computer Vision, Graphics, and Image Processing, volume me 50 (1990)**

Computer Vision, Graphics, and Image Processing, volume 50 (1990), number 1. Korsten, M.J. and Z. Houkes, The estimation of geometry and motion of a...

<http://www.ph.tn.tudelft.nl/PRInfo/volumes/Computer.Vision,.Graphics,.and.Image.Processing.50.h> - size 2K - 20-Dec-97 - English - Translate

Tip: To exclude a word, add a minus sign directly in front of it: eclipse -sun

Word count: computer: 18479695; graphics: 31974589



[Our Network](#) | [Add/Remove URL](#) | [Feedback](#) | [Help](#)  
[Advertising Info](#) | [About AltaVista](#) | [Jobs](#) | [Text-Only](#)



**Digital Equipment Corporation**  
Disclaimer | Privacy Statement  
Copyright 1995-98 All Rights Reserved





AltaVista: Simple Query URL access remote control

<http://www.altavista.digital.com/c...&fmt=.&q=URL+access+remote+control>

08/727,085

Home owners quick cash options:  
 \$25,000 \$50,000 \$75,000 Other Amount

Business Search | People Search | Browse by Subject | Translations | Free eMail

Search  for documents in

About 642376 documents match your query.

[Help](#) . [Preferences](#) . [New Search](#) . [Advanced Search](#)

Welcome to the AltaVista Search Service  
a service of Digital Equipment Corporation

We noticed that you have accessed  
Digital Equipment Corporation AltaVista Search Service  
indirectly.  
To access the site directly and enjoy all of  
its features, go to the following page and bookmark it!

**Our URL is <http://altavista.digital.com>**

**[Click to find related books at amazon.com](#)**

**1. Image on remote URL**

Image on remote URL. [ Replies ] [ Post Reply ] [ Java Q&A Exchange ] [ Help ] Posted by alespa@geocities.com on April 16, 1997 at 07:09:16: I would like..  
[http://www.digitalfocus.com/faq/MM/forum\\_messages/177.html](http://www.digitalfocus.com/faq/MM/forum_messages/177.html) - size 4K - 16-Apr-97 - English - Translate

**2. rmi-users logfile: Remote Class loading must be based on URL?**

Remote Class loading must be based on URL? Randolph S. Kahle (RandyKahle@KAHLEASSOCIATES.COM) Wed, 10 Sep 1997 16:47:26 -0500. Messages sorted by: [ date..  
<http://java.sun.com/products/jdk/rmi/archives/3389.html> - size 8K - 23-Dec-97 - English - Translate

**3. InetExmpl**

INet Address Example Click the Button "Find Local Host" to check the Local host IP address. Enter a remote host URL and then click "Find...  
<http://www.usafast.com/~kiran/InetExmpl.html> - size 2K - 4-Jun-97 - English - Translate

**4. Appendix D: Software Index**

Search this book | Previous | Table of contents | Next. Appendix D: Software Index. This page lists all the software reviewed in this book. The items are..  
<http://witiko.ifs.uni-linz.ac.at/~tom/HTML/tricks/Teaching/appendicies/2400-appendixD-index.htm>

AltaVista: Simple Query URL access remote control <http://www.altavista.digital.com/c...&fmt=.&q=URL+access+remote+c>

- size 37K - 27-Sep-95  
<http://137.82.136.19/Teaching/appendicies/2400-appendixD-index.html> - size 37K - 27-Sep-95

**5. contrib: Applications/Networking**

define({\_list\_end\_},{})define({\_list\_item\_},{})dnl --> contrib: Applications/Networking.  
\*getwww-1.4-1 Download an entire html source tree from a remote...

<http://ns.cinfo.ru/linux/WWW/www.redhat.com/linux-info/pkglist/contrib/Applications/Networking>  
- size 9K - 4-Apr-97 - English - Translate

**6. Drop Stuff w/Expander Enhancer**

Search this book | Previous | Table of contents | Next. Drop Stuff w/Expander Enhancer. Version: 3.5.2. Author: Leonard Rosenthal. Requirements: System 7..

<http://www.macwiz.com/macwiz/Tricks/Teaching/manuscript/0600-0002.html> - size 3K - 11-Jun-96 - English - Translate

**7. GraphicConverter**

Search this book | Previous | Table of contents | Next. GraphicConverter. Version: 2.0.7. Author: Thorsten Lemke. Requirements: System 7, 2MB RAM. Cost:...

<http://www.macwiz.com/macwiz/Tricks/Teaching/manuscript/0600-0006.html> - size 2K - 11-Jun-96 - English - Translate

**8. Scripting WWW Browsers**

Search this book | Previous | Table of contents | Next. Scripting WWW Browsers. Version: 0.01. Author: Eric Lease Morgan. Requirements: HyperCard 2.2....

<http://www.esu6.k12.ne.us/teaching/manuscript/0700-0002.html> - size 7K - 20-Dec-97 - English - Translate

**9. Sound Machine**

Search this book | Previous | Table of contents | Next. Sound Machine. Version: 2.1. Author: Rod Kennedy. Requirements: System 7, 68020 microprocessor (or.

<http://www.macwiz.com/macwiz/Tricks/Teaching/manuscript/0600-0010.html> - size 3K - 11-Jun-96 - English - Translate

Tip: If the first few results don't satisfy you, add more words to the query. Think of words likely to appear in the documents you are looking for

Word count: remote: 3762630; URL: 7990799; control: 13849159; access: 15203121



Home owners quick cash options:  
\$25,000    \$50,000    \$75,000    Other Amount

[Our Network](#) | [Add/Remove URL](#) | [Feedback](#) | [Help](#)  
[Advertising Info](#) | [About AltaVista](#) | [Jobs](#) | [Text-Only](#)



**Digital Equipment Corporation**  
Disclaimer | Privacy Statement  
Copyright 1995-98 All Rights Reserved



AltaVista: Simple Query access sites remote control

http://www.altavista.digital.com/c...kl=XX&q=access+sites+remote+co



Home owners quick cash options:  
\$25,000

Search  for documents in

About 415540 documents match your query.

[Help](#) . [Preferences](#) . [New Search](#) . [Advanced Search](#)

[Click to find related books at amazon.com](#)

1. **Remote Internet Access**  
Remote Internet Access. Goldsmiths Computer Services Guide C3.1 Author: Peter Christian Version 1.0, Feb. 1997. Introduction. The Computer Services..  
<http://scorpio.gold.ac.uk/guides/c301.html> - size 11K - 21-Feb-97 - English - Translate
2. **LAN Magazine Buyers Guide/Russian edition - Companies**  
Eiiaiaie: E. Eastern Research. ECCS. Edimax Computer. EDP. EFA Corporation of America. Efficient Networks. EFI Electronics. Eicon Technology. EliaShim. EMC.  
<http://www.iae.lt/visaginas/home/lan/E.htm> - size 18K - 2-Oct-97 - English - Translate
3. **Networking and Communications Case Study Sign Up**  
nbsp; Case Study and Reference Sign Up. You are invited to sign up and register to be a case study and/or a reference candidate; and be showcased...  
<http://www.microsoft.com/communications/commcaSEstudysignup.htm> - size 5K - 8-Jan-98 - English - Translate
4. **Taurus Alpha 1 - Filebase**  
Taurus Alpha 1 - Welcome to combined FidoNet and Internet technology! Filearea: DOS \* DFUE Programme. Back to area selection DIR \* DOS Back to homepage...  
<http://taurus.hyperbox.org/filebase/A000003B.HTM> - size 9K - 30-Jan-98 - German - Translate
5. **Texascom - Home Page**  
NETModem/E. The complete Remote Access server for PC and Macintosh workgroups. Now there's an easy way to implement dial-in, dial-out, and LAN-to-LAN...  
<http://www.texascom.co.id/products/network/shiva/ntmode.htm> - size 6K - 25-Feb-97 - English - Translate
6. **Networking and Communications Case Studies**  
nbsp; Communications Case Studies. Boca.net, a full-service Internet Service Provider (ISP) for southeastern Florida, aims to become and...  
<http://www.asia.microsoft.com/communications/commcasestudy.htm> - size 7K - 8-Jan-98 - English - Translate
7. **3Com EdgeServer Pro**

AltaVista: Simple Query access sites remote control

http://www.altavista.digital.com/c...kl=XX&q=access+sites+remote+cc

nbs; \* Product Overview | Product Reviews | Windows NT Solutions BSDI Solutions | Product News and Programs | Edgeware...

<http://edgeserver.usr.com/> - size 6K - 13-Nov-97 - English - Translate

8. **No Title**

Notetaker: " vnsuter@ucdavis.edu (Vicki Suter) CPB Steering Committee Meeting Notes DATE: 5/23/97 TIME: 2-4 PM LOCATION: City Council Chambers Conference...

[http://dcas.ucdavis.edu/access/cpb/organizational/5\\_23.html](http://dcas.ucdavis.edu/access/cpb/organizational/5_23.html) - size 5K - 20-Dec-97 - English - Translate

9. **InfoMall Mid-Hudson Activities with LJW**

LJW. Poughkeepsie. LJW is a supplier of High Performance computing software routines and tools. InfoMall Mid Hudson is providing computer access and...

<http://www.infomall.org/home/Mid-Hudson/LJW.html> - size 808 bytes - 30-Oct-95 - English - Translate

10. **SI: Ascend Communications (ASND) (#736/28719)**

Subject: Ascend Communications (ASND) | Previous | Next | Respond | To: david jung (626) From: david jung. Thursday, Sep 5 1996 3:38PM EST Reply # of...

<http://www.techstocks.com/~wsapi/investor/reply-259440> - size 5K - 26-Dec-97 - English - Translate

Tip: Don't be alarmed by a large number of results. All documents containing at least ONE of the terms in your query are counted, but the first few documents are better matches.

Word count: access: 14755; remote: 3762632; sites: 10231579; control: 13849161



Home owners quick cash options:  
\$25,000    \$50,000

[Our Network](#) | [Add/Remove URL](#) | [Feedback](#) | [Help](#)  
[Advertising Info](#) | [About AltaVista](#) | [Jobs](#) | [Text-Only](#)

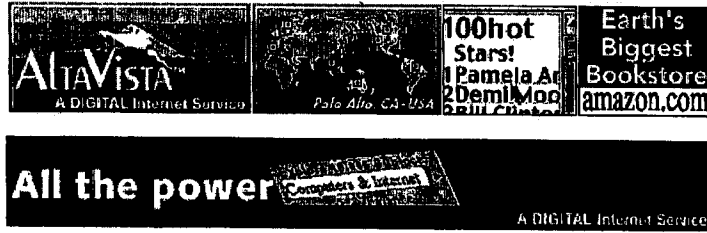


**Digital Equipment Corporation**

[Disclaimer](#) | [Privacy Statement](#)  
Copyright 1995-98 • All Rights Reserved



AltaVista: Simple Query parsing URL

<http://www.altavista.digital.com/s...?pg=q&what=web&kl=XX&q=parsing+>Search  for documents in [Help](#) . [Preferences](#) . [New Search](#) . [Advanced Search](#)

About 60985 documents match your query.

[Click to find related books at amazon.com](#)

### 1. Parsing a URL

Working with URLs. Parsing a URL. The URL class provides several methods that let you query URL objects. You can get the protocol, host name, port number, .

<http://eemumbles.swan.ac.uk/java/docs/tutorial/networking/urls/urlInfo.html> - size 5K - 25-Dec-97 - English - Translate

<http://babbar.cs.gc.edu/Java/tutorial/networking/urls/urlInfo.html> - size 5K - 11-Jul-97 - English - Translate

<http://www1.fh-wedel.de/~si/buecher/TheJavaTutorial/networking/urls/urlInfo.html> - size 5K - 28-Apr-97 - English - Translate

<http://silly.tau.ac.il/~tutjava/networking/urls/urlInfo.html> - size 5K - 24-Dec-96 - English - Translate

### 2. Macscript digest (d018): Re: URL parsing osaxen

Re: URL parsing osaxen. Kevin Chval (spiral@TICKETS.STANFORD.EDU) Mon, 13 Nov 1995 14:14:07 -0800. Messages sorted by: [ date ] [ thread ] [ subject ] [...]

<http://www.its.unimelb.edu.au/hma/pub/macscript/d018/0055.html> - size 4K - 29-Jan-96 - English - Translate

### 3. Re: URL parsing and IPv6 addresses

Prev][Next][Index][Thread] Re: URL parsing and IPv6 addresses. To: www-talk@w3.org. Subject: Re: URL parsing and IPv6 addresses. From: David Nessler...

<http://lists.w3.org/Archives/Public/www-talk.old/msg02793.html> - size 3K - 6-Aug-96 - English - Translate

### 4. Re: URL parsing and IPv6 addresses

Prev][Next][Index][Thread] Re: URL parsing and IPv6 addresses. To: www-talk <www-talk@w3.org> Subject: Re: URL parsing and IPv6 addresses. From:...

<http://lists.w3.org/Archives/Public/www-talk/msg02830.html> - size 3K - 18-Jul-97 - English - Translate

### 5. Parsing a URL

Working with URLs. Parsing a URL. The URL class provides several methods that let you query it for information about the URL. You can get the protocol,...

<http://www.ee.ic.ac.uk/hp/media/html/Java/Tutorial/networking/urls/urlInfo.html> - size 4K -

AltaVista: Simple Query parsing URL

http://www.altavista.digital.com/?pg=q&what=web&kl=XX&q=parsing+

[24-Dec-97 - English - Translate](#)

<http://www.csm.uwe.ac.uk/~pcsmarti/javacourse/java/networking/urls/urlInfo.html> - size 5K -

[21-Dec-97 - English - Translate](#)

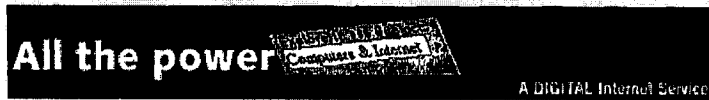
**6. LYNX-DEV DIREED, URL parsing (was: Multiple bookmark file support)**

[Prev](#) | [Next](#) | [Index](#) | [Thread](#) LYNX-DEV DIREED, URL parsing (was: Multiple bookmark file support) To: lynx-dev@sig.net. Subject: LYNX-DEV DIREED, URL parsing...

<http://www.flora.org/lynx-dev/html/month1296/msg00062.html> - size 5K - [3-Dec-96 - English - Translate](#)

**Tip:** The **word count**, located below the results, indicates how many times a term appears in the entire Web. Use it as a spelling or usage checker: type in both spellings for a word, and see which one wins.

Word count: parsing: 141942; URL: 7990799



[Our Network](#) | [Add/Remove URL](#) | [Feedback](#) | [Help](#)  
[Advertising Info](#) | [About AltaVista](#) | [Jobs](#) | [Text-Only](#)



**Digital Equipment Corporation**  
Disclaimer | Privacy Statement  
Copyright 1995-98 All Rights Reserved

