

EXHIBIT J



Traffic Safety Facts Minnesota 2005-2009



This Report Contains Data From the Following Sources:

Fatality Data - NCSA Fatality Analysis Reporting System (FARS): 2005-2008 Final File and 2009 Annual Report File (ARF)
Observed Safety Belt Data - NCSA National Occupant Protection Use Survey (NOPUS) and the Minnesota State Survey
Vehicle Miles of Travel Data and Motorcycle Registrations - Federal Highway Administration (FHWA)
Population Data - U.S. Bureau of the Census



Table of Contents

3. Traffic Safety Performance Measures
4. Fatality Rates: Minnesota , U.S. and Best State
5. Alcohol-Related Fatalities: Minnesota , U.S. and Best State (Old Definition)
6. Alcohol-Impaired Driving Fatalities: Minnesota , U.S. and Best State (New Definition)
7. Fatalities Per 100 Million VMT: Minnesota , U.S.
7. Alcohol-Impaired Driving Fatalities Per 100 Million VMT: Minnesota , U.S.
8. Blood Alcohol Concentration (BAC) Reporting Rates For Drivers/Motorcycle Rider (Operators) Involved in Fatal Crashes: Minnesota , U.S. and Best State
9. Front Seat Passenger Vehicle Occupants, Aged 5 and Over, by Restraint Use: Fatalities and Observed Minnesota , U.S. and Best State
10. Front Seat Passenger Vehicle Occupant Fatalities, Aged 5 and Over, by Percent Restraint Use: Minnesota , U.S.
10. Front Seat Passenger Vehicle Occupants Observed, Aged 5 and Over, by Percent Restraint Use: Minnesota , U.S.
11. Passenger Vehicle Occupant Fatalities Aged 5 and Above by Restraint Use and Lives Saved Estimates
11. Passenger Vehicle Occupant Fatalities Aged Under 5 by Restraint Use and Lives Saved Estimates
12. Motorcyclist Fatalities by Helmet Use and Lives Saved Estimates
13. Fatalities by Person Type
14. Fatalities by Crash Type
15. Motorcyclist Fatalities by Age
15. Motorcyclist Fatalities Per 100,000 Registered Motorcycles
16. Fatalities by Person Type and Race/Hispanic Origin
17. Top 10 Counties for Fatalities
18. Top 10 Counties for Fatalities: Year to Year Percent Change
19. Top 10 Counties for Fatality Rates
20. Motor Vehicle Crash Fatality Maps:
Total Fatalities, Alcohol-Impaired Driving Fatalities, Single Vehicle Crash Fatalities
21. Motor Vehicle Crash Fatality Maps:
Large Truck Crash Fatalities, Speeding Involved Fatalities, Roadway Departure Fatalities
22. Motor Vehicle Crash Fatality Maps:
Intersection Fatalities, Passenger Car Occupants, Light Truck and Van Occupants
23. Motor Vehicle Crash Fatality Maps:
Motorcyclist Fatalities, Pedestrian Fatalities, Pedestrian Fatalities



Traffic Safety Performance (Core Outcome) Measures* For Minnesota

Core Outcome Measures		Year				
		2005	2006	2007	2008	2009
Traffic Fatalities	Total	559	494	510	455	421
	Rural	405	346	352	317	282
	Urban	154	148	158	138	139
	Unknown	0	0	0	0	0
Fatalities Per 100 Million Vehicle Miles Driven**	Total	0.98	0.87	0.89	0.78	
	Rural	1.45	1.27	1.30	1.24	
	Urban	0.53	0.51	0.53	0.42	
Passenger Vehicle Occupant Fatalities (All Seat Positions)	Total	428	361	392	312	294
	Restrained	184	146	170	151	128
	Unrestrained	211	185	187	125	117
	Unknown	33	30	35	36	49
Alcohol-Impaired Driving Fatalities (BAC=.08+)***		163	149	173	132	108
Speeding-Related Fatalities		152	130	111	134	95
Motorcyclist Fatalities	Total	59	67	61	71	52
	Helmeted	18	15	11	12	11
	Unhelmeted	40	52	45	54	38
	Unknown	1	0	5	5	3
Drivers Involved in Fatal Crashes	Total	769	684	792	639	551
	Aged Under 15	1	1	0	2	0
	Aged 15-20	108	107	87	68	69
	Aged Under 21	109	108	87	70	69
	Aged 21 and Over	656	570	702	566	478
	Unknown Age	4	6	3	3	4
Pedestrian Fatalities		44	38	33	25	42

*These Performance Measures Were Developed By The National Highway Traffic Safety Administration (NHTSA) and the Governors Highway Safety Association (GHSA) (See Publication: DOT HS 811 025)

**2009 State Vehicle Miles Traveled (VMT) Data is Not Yet Available

***Based on the BAC of All Involved Drivers and Motorcycle Riders (Operators) Only

[Back To The Table of Contents](#)



Fatality Rates: Minnesota , U.S. and Best State

Year		Fatalities	Total Vehicle Miles Traveled (Millions)	Fatalities Per 100 Million Vehicle Miles Traveled	Total Population	Fatalities Per 100,000 Population
2005	Minnesota	559	56,904	0.98	5,106,560	10.95
	US	43,510	2,989,430	1.46	295,753,151	14.71
	Best State*			0.80		6.83
2006	Minnesota	494	56,518	0.87	5,148,346	9.60
	US	42,708	3,014,371	1.42	298,593,212	14.30
	Best State*			0.78		6.34
2007	Minnesota	510	57,233	0.89	5,191,206	9.82
	US	41,259	3,032,399	1.36	301,579,895	13.68
	Best State*			0.79		6.54
2008	Minnesota	455	57,995	0.78	5,230,567	8.70
	US	37,423	2,973,509	1.26	304,374,846	12.30
	Best State*			0.67		5.56
2009	Minnesota	421			5,266,214	7.99
	US	33,808	2,979,321	1.13	307,006,550	11.01
	Best State*					4.84

*State (or States) With Lowest Rates: Lowest VMT and Population Rates Could Be in Different States

2009 National VMT is a Preliminary Estimate and Subject to Change

2009 State Vehicle Miles Traveled (VMT) Data is Not Yet Available

[Back To The Table of Contents](#)



Fatalities By The Highest Blood Alcohol Concentration (BAC) in the Crash:**
Minnesota, U.S. and Best State
(Old Definition)

Year		Total Fatalities in all Crashes	Highest BAC level in the Crash					
			BAC = .01+			BAC = .08+		
			Number	Percent	Per 100 Million VMT	Number	Percent	Per 100 Million VMT
2005	Minnesota	559	208	37	0.37	178	32	0.31
	US	43,510	17,590	40	0.59	15,102	35	0.51
	Best State*			14	0.16		12	0.14
2006	Minnesota	494	184	37	0.33	158	32	0.28
	US	42,708	17,738	42	0.59	15,144	35	0.50
	Best State*			24	0.26		20	0.22
2007	Minnesota	510	202	40	0.35	181	35	0.32
	US	41,259	17,158	42	0.57	14,603	35	0.48
	Best State*			24	0.27		21	0.23
2008	Minnesota	455	168	37	0.29	141	31	0.24
	US	37,423	15,449	41	0.52	13,258	35	0.45
	Best State*			21	0.21		16	0.16
2009	Minnesota	421	140	33		120	29	
	US	33,808	14,188	42	0.48	12,233	36	0.41
	Best State*			23			18	

*State (or States) With Lowest Percents: Lowest Percents Could Be in Different States

**Based on the BAC of All Involved Drivers, Motorcycle Riders (Operators), Pedalcyclists and Pedestrians

2009 National VMT is a Preliminary Estimate and Subject to Change

2009 State Vehicle Miles Traveled (VMT) Data is Not Yet Available

[Back To The Table of Contents](#)



Alcohol-Impaired Driving Fatalities:**
Minnesota, U.S. and Best State
(New Definition)

Year		Total Fatalities in all Crashes	Alcohol-Impaired Driving Fatalities (BAC = .08+)		
			Number	Percent	Per 100 Million VMT
2005	Minnesota	559	163	29	0.29
	US	43,510	13,582	31	0.45
	Best State*			12	0.13
2006	Minnesota	494	149	30	0.26
	US	42,708	13,491	32	0.45
	Best State*			18	0.20
2007	Minnesota	510	173	34	0.30
	US	41,259	13,041	32	0.43
	Best State*			19	0.21
2008	Minnesota	455	132	29	0.23
	US	37,423	11,711	31	0.39
	Best State*			16	0.16
2009	Minnesota	421	108	26	
	US	33,808	10,839	32	0.36
	Best State*			16	

*State (or States) With Lowest Percents: Lowest Percents Could Be in Different States

**Based on the BAC of All Involved Drivers and Motorcycle Riders (Operators) Only

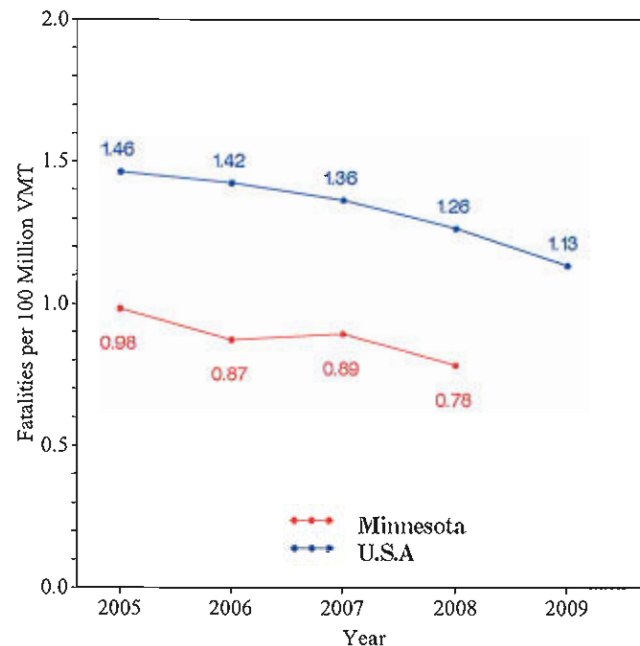
2009 National VMT is a Preliminary Estimate and Subject to Change

2009 State Vehicle Miles Traveled (VMT) Data is Not Yet Available

[Back To The Table of Contents](#)

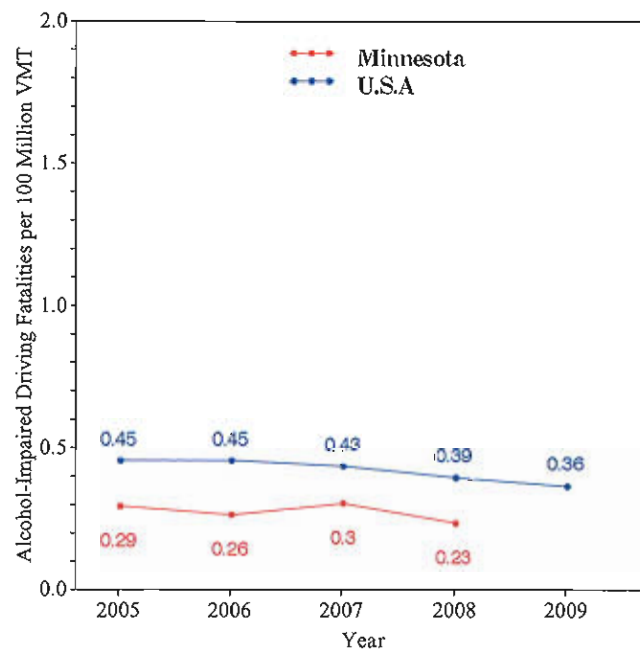


Fatalities per 100 Million VMT



[Back To The Table of Contents](#)

Alcohol-Impaired Driving Fatalities per 100 Million VMT



2009 National VMT is a Preliminary Estimate and Subject to Change
2009 State Vehicle Miles Traveled (VMT) Data is Not Yet Available

[Back To The Table of Contents](#)



**Blood Alcohol Concentration (BAC) Reporting Rates
For Drivers/Motorcycle Riders (Operators)
Involved in Fatal Crashes:
Minnesota, U.S. and Best State**

Year		Surviving Drivers/Motorcycle Riders			Killed Drivers/Motorcycle Riders			Total Drivers/Motorcycle Riders		
		Total	With Blood Alcohol Concentration (BAC) Results Reported to FARS		Total	With Blood Alcohol Concentration (BAC) Results Reported to FARS		Total	With Blood Alcohol Concentration (BAC) Results Reported to FARS	
			Number	Percent		Number	Percent		Number	Percent
2005	Minnesota	389	287	74	380	347	91	769	634	82
	US	31,729	7,415	23	27,491	18,773	68	59,220	26,188	44
	Best State*			77			98			84
2006	Minnesota	340	168	49	344	319	93	684	487	71
	US	30,498	7,482	25	27,348	18,911	69	57,846	26,393	46
	Best State*			81			99			85
2007	Minnesota	411	177	43	381	338	89	792	515	65
	US	29,449	7,631	26	26,570	19,434	73	56,019	27,065	48
	Best State*			82			100			84
2008	Minnesota	329	179	54	310	283	91	639	462	72
	US	26,162	7,656	29	24,254	18,415	76	50,416	26,071	52
	Best State*			81			99			85
2009	Minnesota	287	141	49	264	236	89	551	377	68
	US	23,432	6,372	27	21,798	15,505	71	45,230	21,877	48
	Best State*			86			97			90

*State (or States) With Highest Percentis: Highest Percentis Could Be in Different States

[Back To The Table of Contents](#)



Daytime Front Seat (Outboard Only) Passenger Vehicle Occupants, Aged 5 and Over, by Restraint Use:

Fatalities and Observed Minnesota, U.S. and Best State

Year		Fatalities - Restrained**	Observed - Restrained***
		Percent	Percent
2005	Minnesota	56	84
	US	55	82
	Best State*	88	95
2006	Minnesota	56	83
	US	55	81
	Best State*	100	96
2007	Minnesota	55	88
	US	57	82
	Best State*	82	98
2008	Minnesota	65	87
	US	56	83
	Best State*	78	97
2009	Minnesota	61	90
	US	58	84
	Best State*	77	98

*State With Highest Percent. Fatal Crash and Observed Percents Can Be Different States

**Percent Based Only Where Restraint Use Was Known

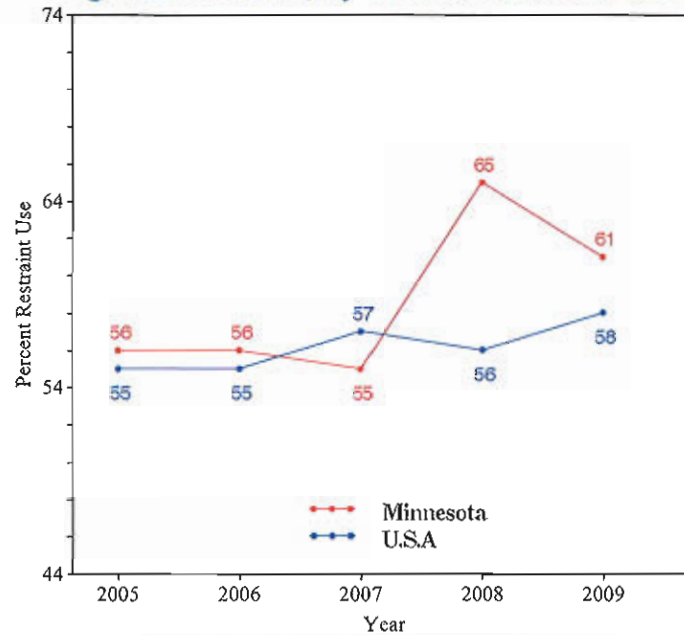
***USA Data: National Occupant Protection Use Survey. Minnesota Data: State Survey

Note: The Purpose of this Table is to Compare (as closely as possible) the Use of Restraint Systems by Fatally Injured Occupants with Occupants in all Driving Situations

[Back To The Table of Contents](#)



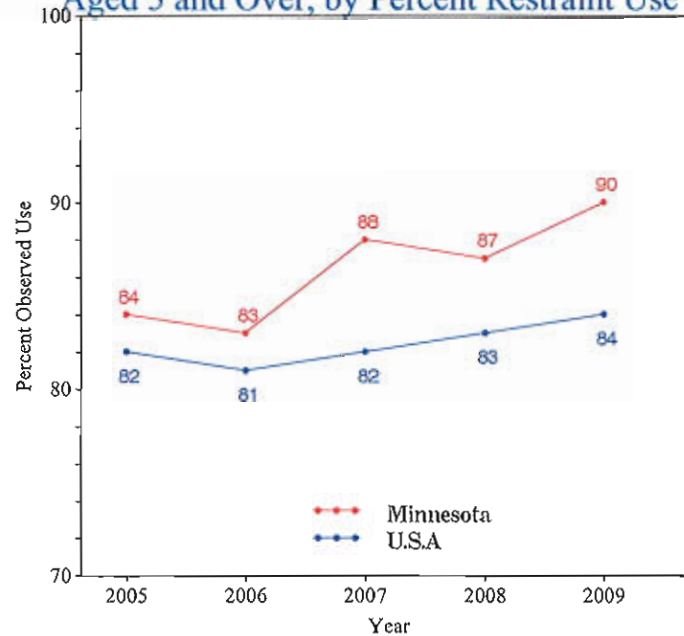
Daytime Front Seat (Outboard Only) Passenger Vehicle Occupant Fatalities, Aged 5 and Over, by Percent Restraint Use*



*Percent Based Only Where Restraint Use Was Known

[Back To The Table of Contents](#)

Daytime Front Seat (Outboard Only) Passenger Vehicle Occupants Observed, Aged 5 and Over, by Percent Restraint Use*



*USA Data: National Occupant Protection Use Survey, Minnesota Data: State Survey

[Back To The Table of Contents](#)



Passenger Vehicle Occupant Fatalities Age 5 and Above by Restraint Use and Lives Saved Estimates

Year	Fatalities Age 5 and Above					Lives Saved Estimates**	
	Total	Restrained	Unrestrained	Unknown Restraint Use	Percent Known Restrained*	Lives Saved at Current Belt Use	Additional Lives Savable at 100% Belt Usage
2005	423	180	210	33	46	225	72
2006	358	144	185	29	44	180	68
2007	388	166	187	35	47	210	59
2008	304	144	124	36	54	193	52
2009	288	124	117	47	51	174	38

*Percent Based Only Where Restraint Use Was Known

**Lives Saved Estimates (Sum of columns may not equal other published numbers due to rounding)

[Back To The Table of Contents](#)

Passenger Vehicle Occupant Fatalities Age 4 and Under by Restraint Use and Lives Saved Estimates

Year	Fatalities Age 4 and Under					Lives Saved Estimates**	
	Total	Restrained	Unrestrained	Unknown Restraint Use	Percent Known Restrained*	Lives Saved at Current Seat Belt and Child Safety Seat Usage	
2005	5	4	1	0	80	6	
2006	3	2	0	1	100	4	
2007	4	4	0	0	100	5	
2008	8	7	1	0	88	12	
2009	6	4	0	2	100	8	

*Percent Based Only Where Restraint Use Was Known

**Lives Saved Estimates

[Back To The Table of Contents](#)



Motorcyclist Fatalities by Helmet Use and Lives Saved Estimates

Year	Fatalities					Lives Saved Estimates**	
	Total	Helmeted	Unhelmeted	Unknown Helmet Use	Percent Known Helmeted*	Lives Saved at Current Helmet Use	Additional Lives Savable at 100% Helmet Usage
2005	59	18	40	1	31	11	15
2006	67	15	52	0	22	9	19
2007	61	11	45	5	20	7	18
2008	71	12	54	5	18	8	22
2009	52	11	38	3	22	7	15

*Percent Based Only Where Helmet Use Was Known

**Lives Saved Estimates (Sum of columns may not equal other published numbers due to rounding)

[Back To The Table of Contents](#)



Fatalities by Person Type

Person Type		2005		2006		2007		2008		2009	
		#	%*	#	%*	#	%*	#	%*	#	%*
Occupants	Passenger Car	249	45	230	47	218	43	182	40	167	40
	Light Truck - Pickup	66	12	62	13	85	17	43	9	59	14
	Light Truck - Utility	69	12	45	9	58	11	56	12	37	9
	Light Truck - Van	44	8	24	5	31	6	31	7	31	7
	Large Truck	12	2	10	2	8	2	11	2	7	2
	Bus	0	0	0	0	1	0	6	1	2	0
	Other/Unknown Occupants	9	2	8	2	11	2	11	2	13	3
	Total Occupants	449	80	379	77	412	81	340	75	316	75
Motorcyclists	Total Motorcyclists	59	11	67	14	61	12	71	16	52	12
Nonoccupants	Pedestrian	44	8	38	8	33	6	25	5	42	10
	Bicyclist and Other Cyclist	7	1	8	2	4	1	13	3	10	2
	Other/Unknown Nonoccupants	0	0	2	0	0	0	6	1	1	0
	Total Nonoccupants	51	9	48	10	37	7	44	10	53	13
Total	Total	559	100	494	100	510	100	455	100	421	100

*Sum of Percents May Not = 100 Due to Individual Cell Rounding

[Back To The Table of Contents](#)



Fatalities by Crash Type

Crash Type	2005	2006	2007	2008	2009
Total Fatalities (All Crashes)*	559	494	510	455	421
- (1) Single Vehicle	275	265	240	246	217
- (2) Involving a Large Truck	70	62	86	70	59
- (3) Involving Speeding	152	130	111	134	95
- (4) Involving a Rollover	190	148	183	148	114
- (5) Involving a Roadway Departure	254	222	238	227	202
- (6) Involving an Intersection (or Intersection Related)	139	129	169	143	138

(1) Crash Involved Only One Coded Vehicle

(2) Crash Involved at Least One Large Truck

(3) Crash Involved at Least One Vehicle Speeding

(4) Crash Involved at Least One Vehicle That Rolled Over

(5) Crash Involved at Least One Vehicle That Departed the Roadway (FHWA Definition)

(6) Crash Occured Within an Intersection or Within the Approach to an Intersection

*A Fatality Can Be in More Than One Category. Therefore Sum of the Individual Cells Will Not Equal the Total Due to Double Counting

[Back To The Table of Contents](#)



Motorcyclist Fatalities by Age

Year	Age						Total
	<20	20-29	30-39	40-49	50-59	>59	
2005	4	9	8	22	9	7	59
2006	1	19	10	20	14	3	67
2007	2	7	7	17	19	9	61
2008	3	15	14	19	11	9	71
2009	1	12	5	17	12	5	52

[Back To The Table of Contents](#)

Motorcyclist Fatalities Per 100,000 Registered Motorcycles

Year	Motorcyclist Fatalities	Total Motorcycle Registrations*	Motorcyclist Fatalities Per 100,000 Motorcycle Registrations
2005	59	201,134	29.33
2006	67	215,664	31.07
2007	61	229,805	26.54
2008	71	248,708	28.55
2009	52		

*Data Source: FHWA

*2009 Motorcycle Registrations are Not Yet Available

[Back To The Table of Contents](#)



Fatalities by Person Type and Race/Hispanic Origin

Person Type by Race/Hispanic Origin		2005	2006	2007	2008
Occupants (All Vehicle Types)	Hispanic	12	14	24	15
	White Non-Hispanic	270	375	380	338
	Black, Non-Hispanic	8	12	15	17
	American Indian, Non-Hispanic/Unknown	11	10	6	7
	Asian, Non-Hispanic/Unknown	5	3	5	5
	Multiple Races, Non-Hispanic/Unknown	0	0	1	2
	All Other Non-Hispanic or Race	2	6	10	11
	Unknown Race and Unknown Hispanic	200	26	32	16
	Total	508	446	473	411
Non-Occupants (Pedestrians, Pedalcyclists and Other/Unknown NonOccupants)					
	Hispanic	0	2	0	3
	White Non-Hispanic	19	39	28	37
	Black, Non-Hispanic	2	2	3	2
	American Indian, Non-Hispanic/Unknown	4	2	1	2
	Asian, Non-Hispanic/Unknown	2	1	1	0
	Multiple Races, Non-Hispanic/Unknown	0	0	1	0
	All Other Non-Hispanic or Race	1	1	1	0
	Unknown Race and Unknown Hispanic	23	1	2	0
	Total	51	48	37	44
Total		559	494	510	455

2009 Race/Hispanic Origin Data is Not Yet Complete

[Back To The Table of Contents](#)



5 Year Trend For The Top 10 Counties of 2009 - Fatalities

Counties by 2009 Ranking		Fatalities					Percent of Total				
		2005	2006	2007	2008	2009	2005	2006	2007	2008	2009
1	Hennepin County	49	40	50	53	46	9	8	10	12	11
2	Olmsted County	10	14	14	7	19	2	3	3	2	5
3	Ramsey County	26	20	23	17	19	5	4	5	4	5
4	St. Louis County	19	21	23	22	19	3	4	5	5	5
5	Anoka County	23	29	16	18	16	4	6	3	4	4
6	Wright County	16	11	20	17	14	3	2	4	4	3
7	Dakota County	28	22	26	20	13	5	4	5	4	3
8	Otter Tail County	10	4	7	5	13	2	1	1	1	3
9	Renville County	7	4	4	1	12	1	1	1	0	3
10	Washington County	19	15	20	9	12	3	3	4	2	3
Sub Total 1.*	Top Ten Counties	233	203	224	194	183	42	41	44	43	43
Sub Total 2.**	All Other Counties	326	291	286	261	238	58	59	56	57	57
Total	All Counties	559	494	510	455	421	100	100	100	100	100

*This Sub Total is the Total for the Top Ten Counties

**This Sub Total is the Total for all Counties Outside the Top Ten

[Back To The Table of Contents](#)



5 Year Trend For The Top 10 Counties of 2009 - Fatalities Year to Year Percent Change

Counties by 2009 Ranking		Fatalities					Percent Change From Previous Year			
		2005	2006	2007	2008	2009	2006	2007	2008	2009
1	Hennepin County	49	40	50	53	46	-18	25	6	-13
2	Olmsted County	10	14	14	7	19	40	0	-50	171
3	Ramsey County	26	20	23	17	19	-23	15	-26	12
4	St. Louis County	19	21	23	22	19	11	10	-4	-14
5	Anoka County	23	29	16	18	16	26	-45	13	-11
6	Wright County	16	11	20	17	14	-31	82	-15	-18
7	Dakota County	28	22	26	20	13	-21	18	-23	-35
8	Otter Tail County	10	4	7	5	13	-60	75	-29	160
9	Renville County	7	4	4	1	12	-43	0	-75	1,100
10	Washington County	19	15	20	9	12	-21	33	-55	33
Sub Total 1.*	Top Ten Counties	233	203	224	194	183	-13	10	-13	-6
Sub Total 2.**	All Other Counties	326	291	286	261	238	-11	-2	-9	-9
Total	All Counties	559	494	510	455	421	-12	3	-11	-7

*This Sub Total is the Total for the Top Ten Counties

**This Sub Total is the Total for all Counties Outside the Top Ten

[Back To The Table of Contents](#)



5 Year Trend For The Top 10 Counties of 2009 - Fatality Rates

Median Rate for all U.S. Counties: 18.23

Counties by 2009 Ranking		Fatalities Per 100,000 Population				
		2005	2006	2007	2008	2009
1	Renville County	42.42	24.54	24.78	6.31	76.35
2	Jackson County	54.96	9.13	9.15	9.24	74.17
3	Mahnomen County	0.00	39.76	59.25	39.52	39.80
4	Big Stone County	0.00	18.68	18.71	0.00	38.09
5	Hubbard County	26.80	26.90	16.01	16.00	37.55
6	Redwood County	19.04	19.09	25.65	12.82	32.33
7	Freeborn County	12.71	6.38	12.81	38.74	32.26
8	Becker County	19.04	12.59	15.69	18.79	31.18
9	Chippewa County	31.70	39.87	16.11	16.16	24.35
10	Nobles County	14.82	9.97	19.91	19.58	24.32
Sub Rate 1.* <i>Top Ten Counties</i>		46.90	36.37	46.29	37.46	38.36
Sub Rate 2.** <i>All Other Counties</i>		10.05	8.98	9.30	7.90	7.00
Total Rate <i>All Counties</i>		10.95	9.60	9.82	8.70	7.99

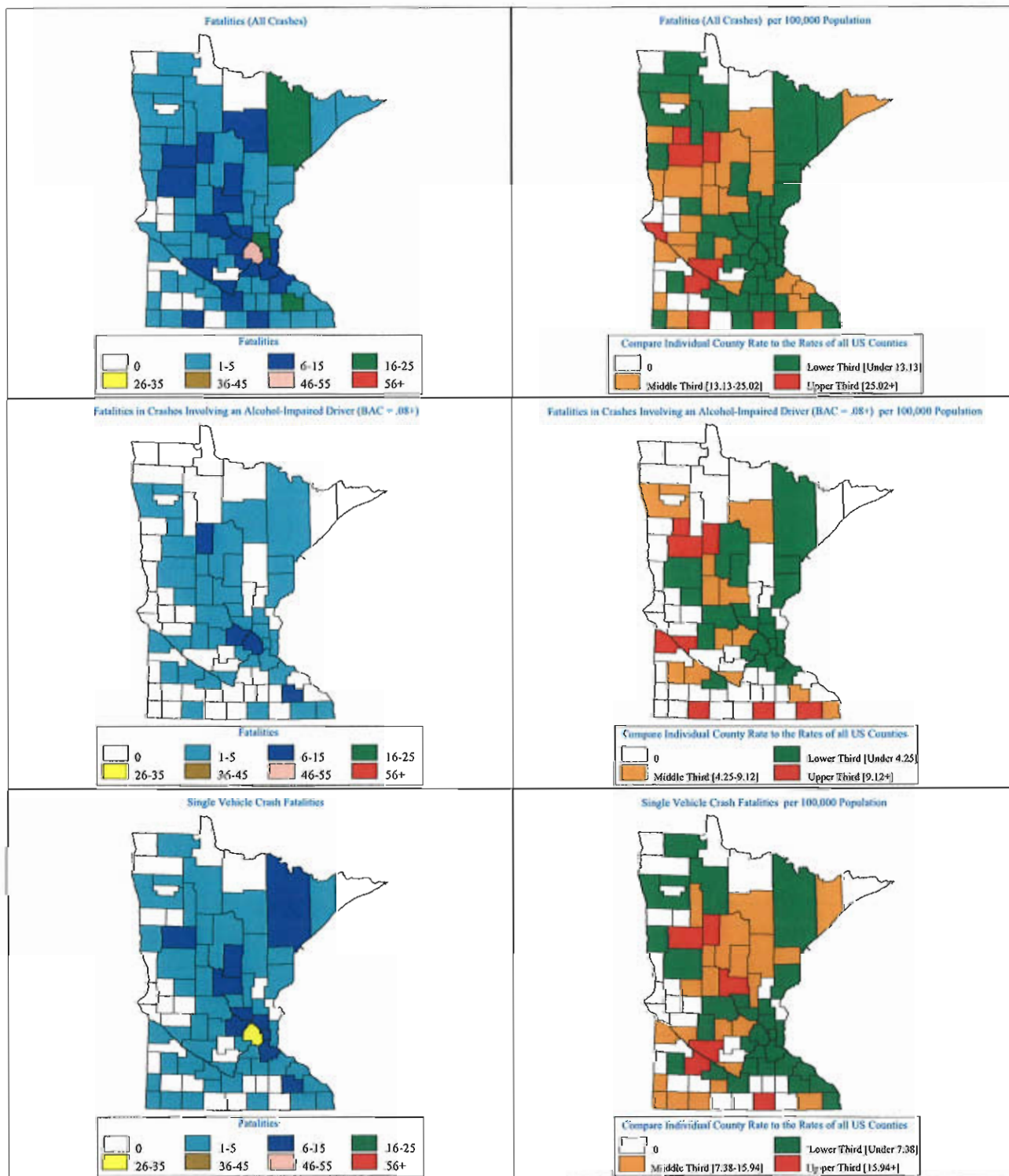
*This Sub Rate is the Rate for the Top Ten Counties

**This Sub Rate is the Rate for all Counties Outside the Top Ten

[Back To The Table of Contents](#)



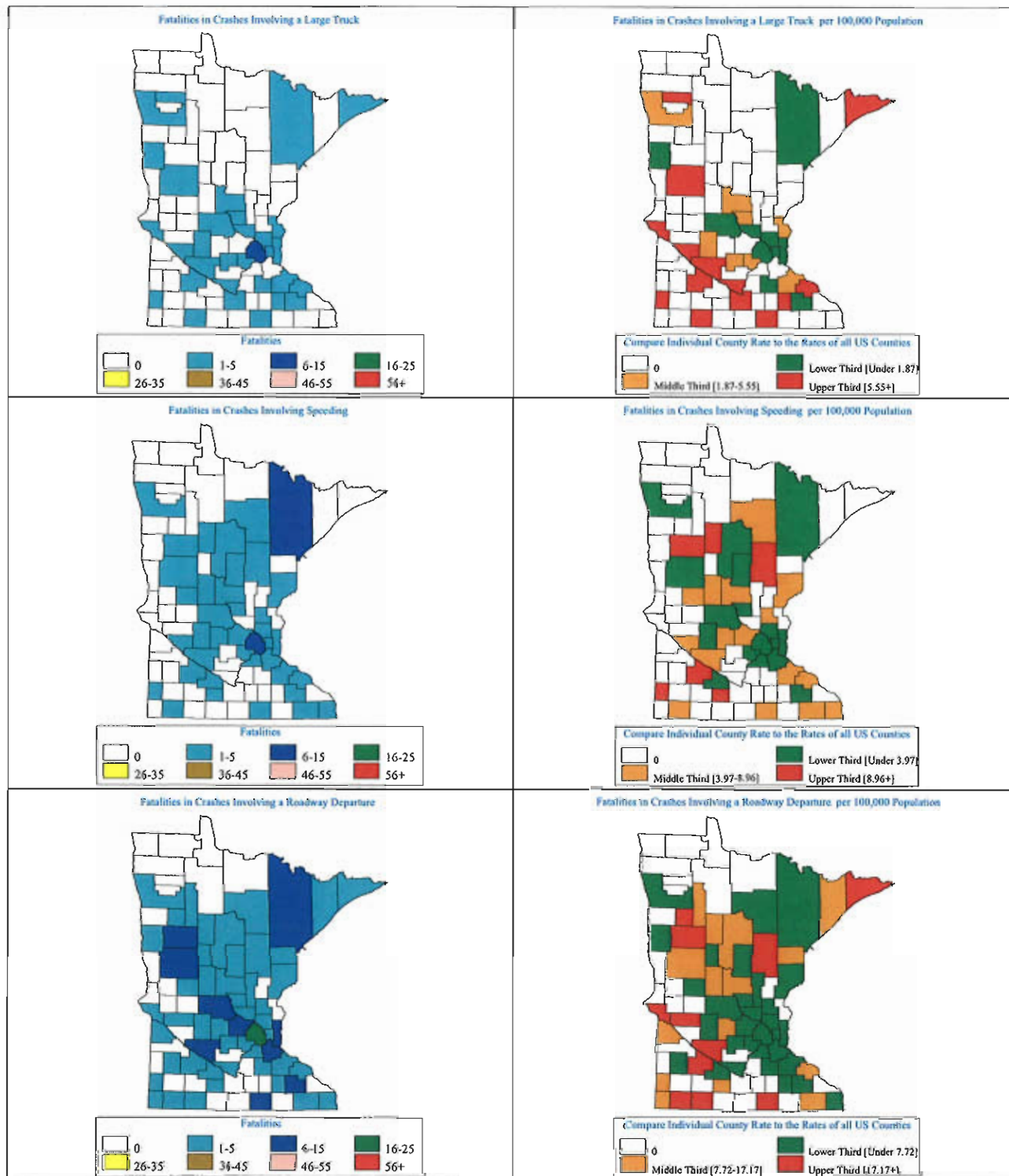
Minnesota Motor Vehicle Crash Fatality Maps for 2009



[Back To The Table of Contents](#)



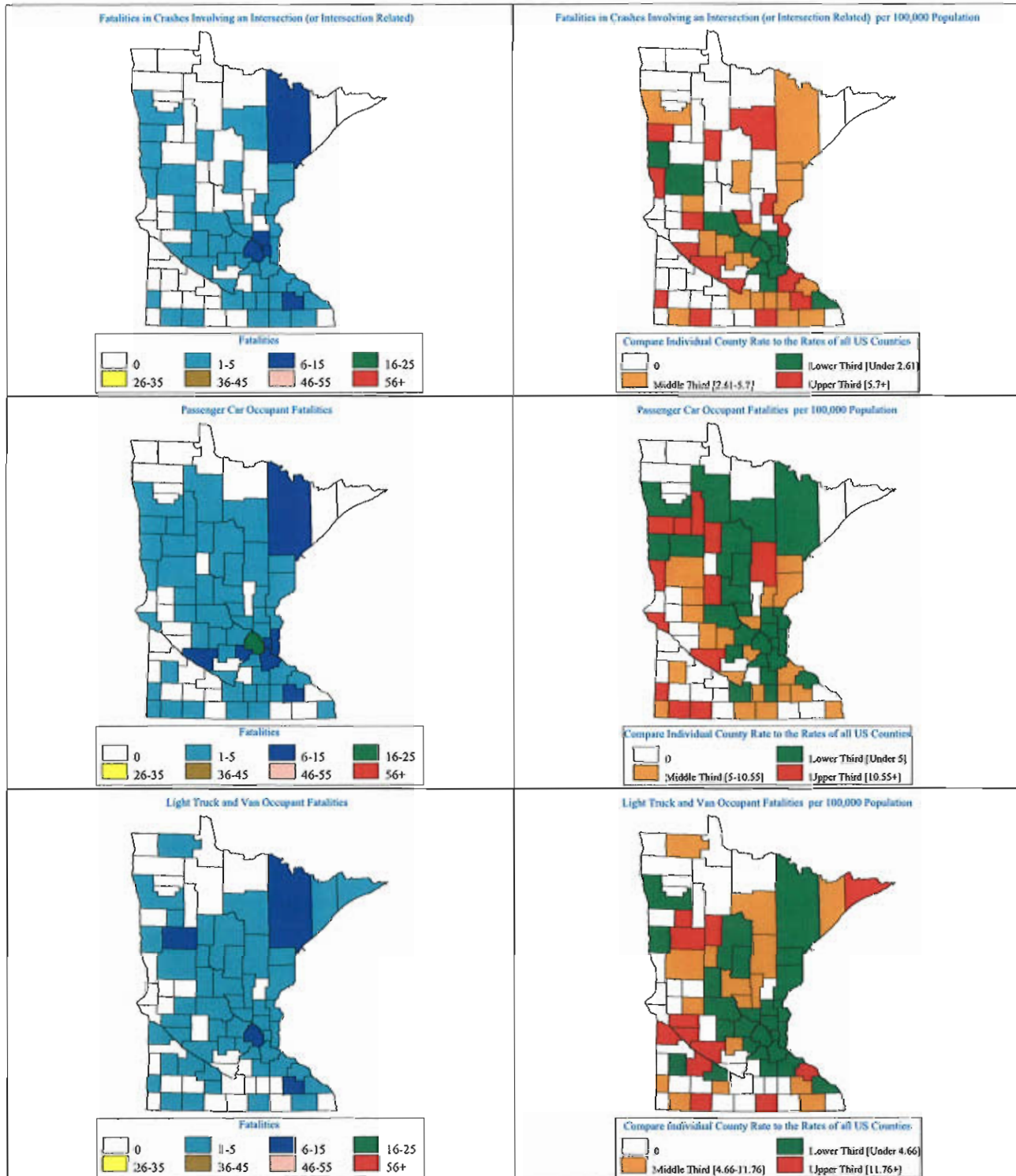
Minnesota Motor Vehicle Crash Fatality Maps for 2009



[Back To The Table of Contents](#)



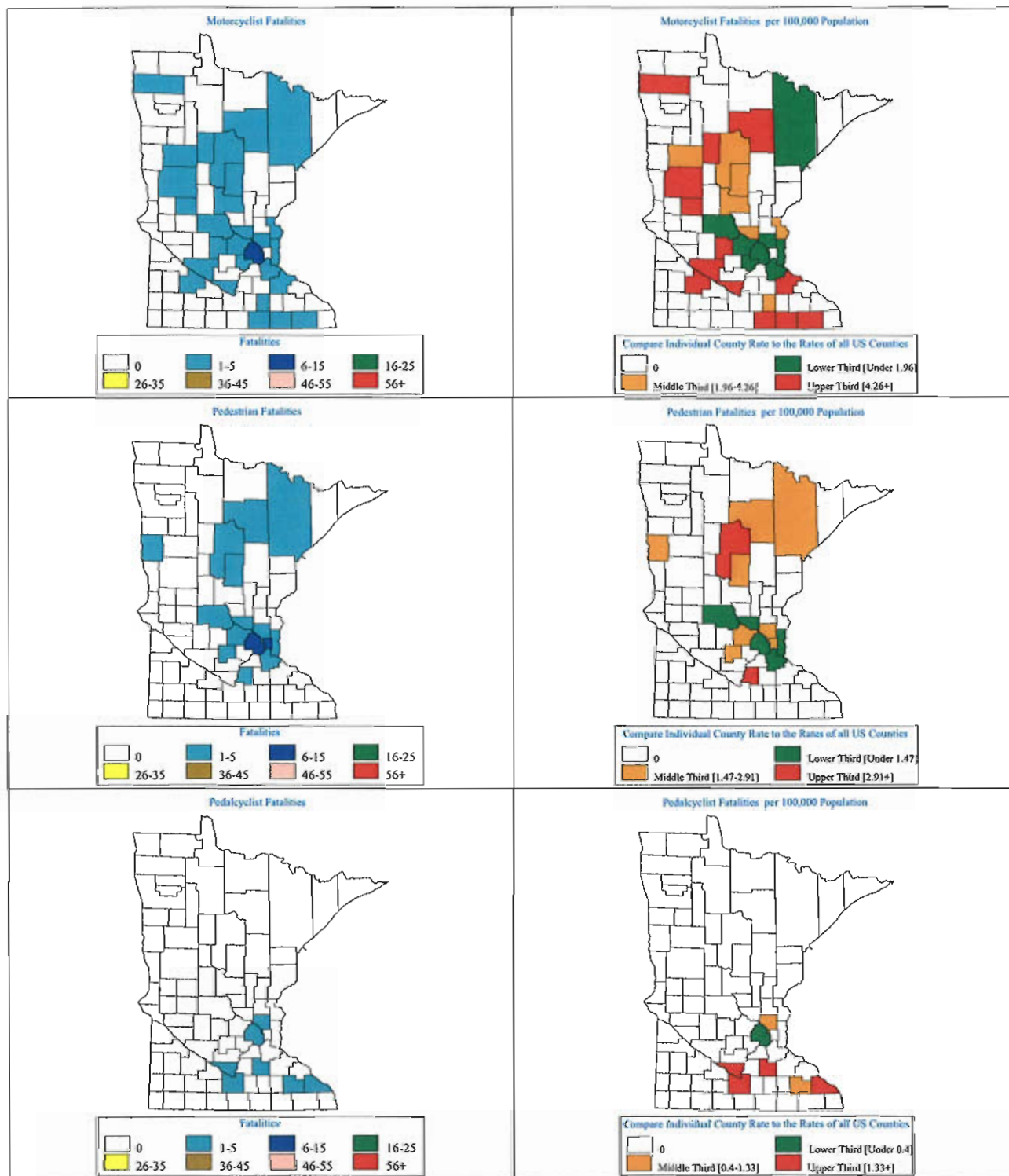
Minnesota Motor Vehicle Crash Fatality Maps for 2009



[Back To The Table of Contents](#)



Minnesota Motor Vehicle Crash Fatality Maps for 2009



[Back To The Table of Contents](#)