

EXHIBIT EEE

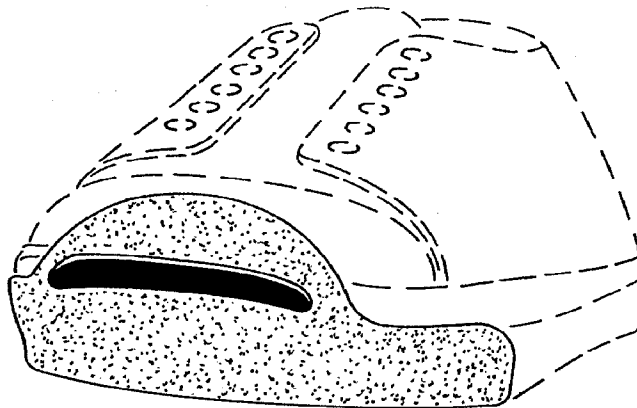
Int. Cl.: 25

Prior U.S. Cls.: 22 and 39

United States Patent and Trademark Office

Reg. No. 1,998,884
Registered Sep. 10, 1996

**TRADEMARK
PRINCIPAL REGISTER**



CONVERSE INC. (DELAWARE CORPORATION)
ONE FORDHAM ROAD
NORTH READING, MA 018642680

FOR: FOOTWEAR, IN CLASS 25 (U.S. CLS. 22 AND 39).
FIRST USE 0-0-1935; IN COMMERCE 0-0-1935.

THE STIPPLING SHOWN IN THE DRAWING IS A FEATURE OF THE MARK AND NOT INTENDED TO INDICATE COLOR.

THE MARK CONSISTS OF A SHOE TOE DESIGN COMPRISED OF A MOLDED FORM

FLATTENED IN THE FRONT INTO A SEMI-CIRCULAR SHAPE WITH A SOLID HORIZONTAL BAR ALONG THE MIDDLE OF TOE, TERMINATING THE SEMI-CIRCLE. THE DOTTED LINES IN THE DRAWING ARE NOT A PART OF THE MARK BUT SHOW ITS POSITION ON THE GOODS.

SEC. 2(F).

SER. NO. 73-810,426, FILED 7-3-1989.

JERI J. FICKES, EXAMINING ATTORNEY