

EXHIBIT V

**TO DECLARATION AND LOCAL RULE 7-5 CERTIFICATION OF ERIK
S. MAURER IN SUPPORT OF PLAINTIFFS' EMERGENCY MOTION
FOR TEMPORARY RESTRAINING ORDER, SEIZURE ORDER, AND
PRELIMINARY INJUNCTION**



US00D580646S

(12) **United States Design Patent**
Portzline

(10) **Patent No.:** **US D580,646 S**

(45) **Date of Patent:** **** Nov. 18, 2008**

(54) **PORTION OF A SHOE**

(75) Inventor: **Scott Portzline**, Portland, OR (US)

(73) Assignee: **Nike, inc.**, Beaverton, OR (US)

(**) Term: **14 Years**

(21) Appl. No.: **29/318,945**

(22) Filed: **May 30, 2008**

(51) **LOC (8) Cl.** **02-99**

(52) **U.S. Cl.** **D2/972**

(58) **Field of Classification Search** D2/902,
D2/906-908, 943, 944, 946, 969, 972-974;
36/45, 50.1, 77 M, 77 R, 83, 88, 113, 114,
36/126-131

See application file for complete search history.

(56) **References Cited**

U.S. PATENT DOCUMENTS

D93,509 S	10/1934	Phifer	
D172,742 S	8/1954	Doherty	
D301,385 S *	6/1989	Weiner	D2/908
D391,062 S	2/1998	Hatfield	
D395,354 S *	6/1998	Avar	D2/972
D413,196 S	8/1999	Hatfield	
D474,011 S *	5/2003	Smith	D2/972
D485,052 S	1/2004	Holmes	
D491,346 S	6/2004	Roulo	
D494,355 S	8/2004	Allen	
D498,912 S	11/2004	Kuerbis	
D499,876 S	12/2004	Lozano	
D500,586 S	1/2005	Wozniak	
D509,350 S	9/2005	Holmes	
D510,477 S	10/2005	McDowell	
D513,849 S	1/2006	Hull	
D514,302 S *	2/2006	Young	D2/972
D514,303 S	2/2006	Wahoske	
D515,301 S *	2/2006	Gillespie	D2/972
D520,226 S	5/2006	Lotti	
D520,227 S	5/2006	Portzline	
D522,225 S	6/2006	Holmes	
D522,732 S	6/2006	Cooper	
D523,222 S	6/2006	Savage	

D523,619 S	6/2006	Mermet	
D523,620 S	6/2006	Cass	
D524,532 S	7/2006	Roulo	
D528,284 S	9/2006	Cessor	
D528,770 S	9/2006	Chang	
D529,705 S	10/2006	Lupo	
D532,195 S	11/2006	Rasmussen	
D543,347 S	5/2007	Holmes	
D572,459 S *	7/2008	Hatfield et al.	D2/972

OTHER PUBLICATIONS

Men's Nike Footwear Catalog, Holiday 1997, p. 36, published Mar. 1997.

(Continued)

Primary Examiner—Dominic Simone
(74) *Attorney, Agent, or Firm*—TraskBritt, P.C.

(57) **CLAIM**

The ornamental design for a portion of a shoe, as shown and described.

DESCRIPTION

FIG. 1 is a perspective view of a portion of a shoe showing my new design;

FIG. 2 is a side of the portion of a shoe shown in FIG. 1;

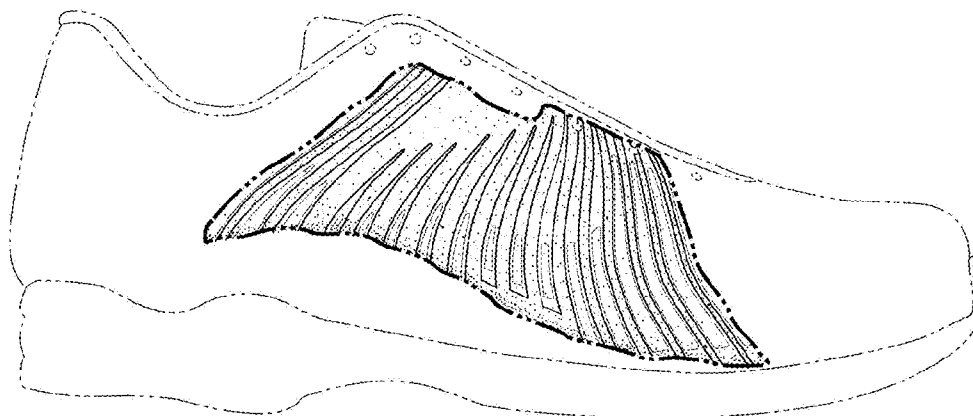
FIG. 3 is a front view of the portion of a shoe shown in FIG. 1;

FIG. 4 is a rear view of the portion of a shoe shown in FIG. 1; and,

FIG. 5 is a top view of the portion of a shoe shown in FIG. 1.

The uneven broken line immediately adjacent to the shaded area represents the bounds of the claimed design. All other uneven broken lines represent the remaining portion of the shoe. The uneven broken line representations in FIGS. 1-5 are for illustrative purposes only and form no part of the claimed design.

1 Claim, 2 Drawing Sheets



OTHER PUBLICATIONS

Women's/Kids' Nike Footwear Catalog, Fall 1998, p. 6, published Nov. 1997.

Men's Nike Footwear Catalog, Late Spring 1999, pp. M11, 50, published Sep. 1998.

Men's Nike Footwear Catalog, Late Spring 2001, p. 135, published Sep. 2000.

Women's Nike Footwear Catalog, Late Spring 2001, p. 30, published Sep. 2000.

Men's Nike Footwear Catalog, Fall 2001, pp. 30, 33, published Nov. 2000.

Men's Nike Footwear Catalog, Late Spring 2002, pp. 16, 38, published Sep. 2001s.

Men's Nike Footwear Catalog, Late Spring 2003, pp. 4, 5 published Sep. 2002.

Men's Nike Footwear Catalog, Spring 2004, p. 31, published Jun. 2003.

Women's/Kids' Nike Footwear Catalog, Spring 2004, p. 8, published Jun. 2003.

Men's Nike Footwear Catalog, Fall 2004, p. 3, published Nov. 2003.

Nike Footwear Catalog, Late Spring 2005, p. 144, published Sep. 2004.

Nike Footwear Catalog, Fall 2005, pp. 112, 117, published Nov. 2004.

Nike Footwear Catalog, Holiday 2005, pp. 52, 126, published Mar. 2005.

Nike Footwear Catalog, Spring 2006, pp. 55, 130, 145, published Jun. 2005.

Nike Footwear Catalog, Fall 2006, pp. 55, 155, published Nov. 2005.

Nike Footwear Catalog, Summer 2007, pp. 162, 244, Sep. 2006.

Nike Footwear Catalog, Holiday 2007, p. 206, Feb. 2007.

* cited by examiner

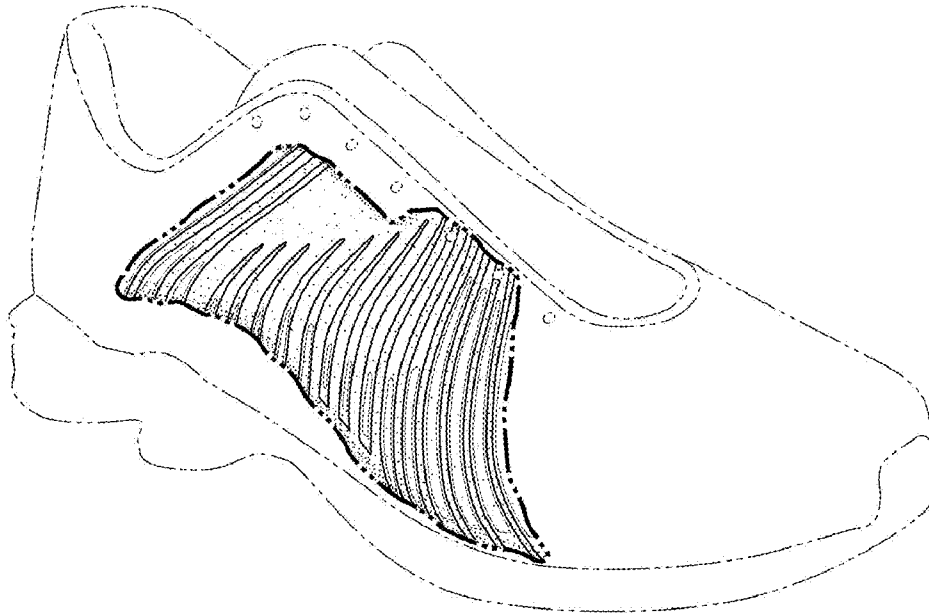


FIG. 1

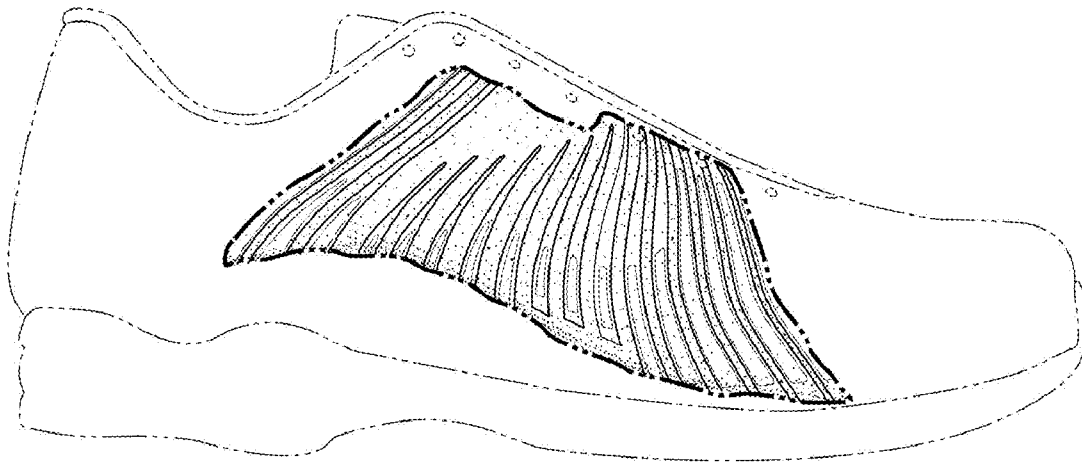


FIG. 2

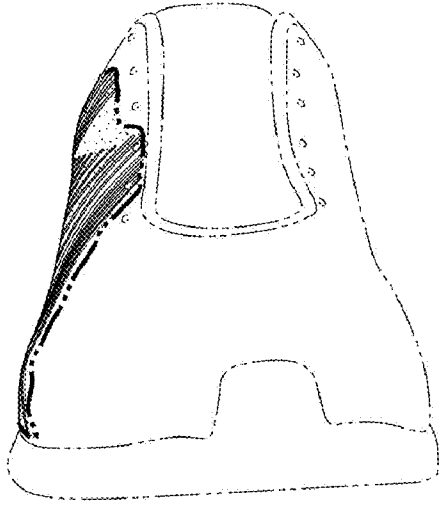


FIG. 3

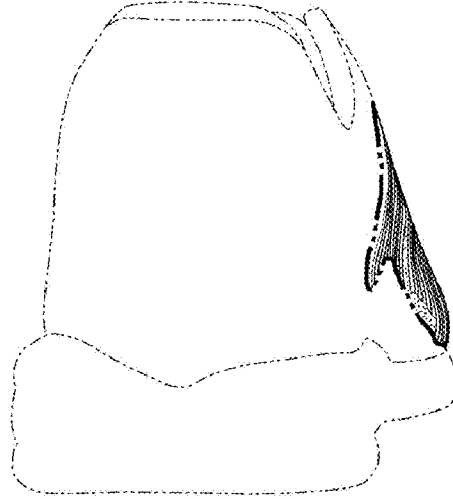


FIG. 4

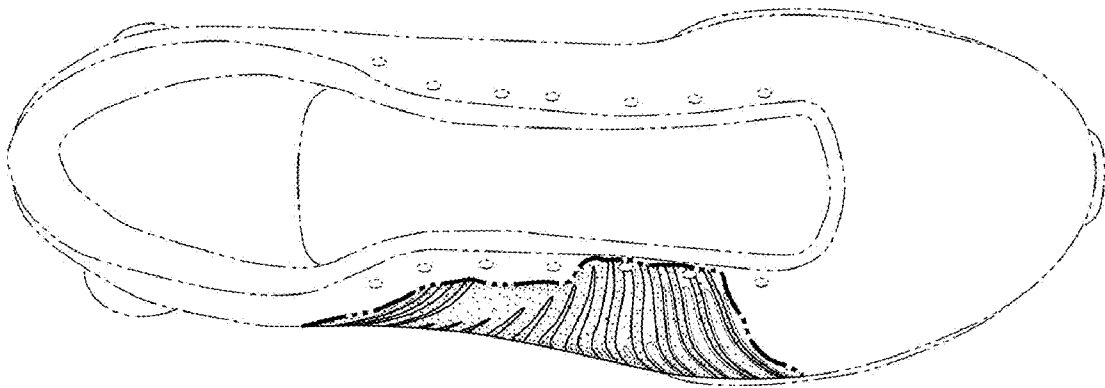


FIG. 5