

EXHIBIT X

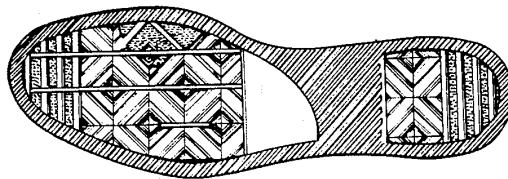
**TO DECLARATION AND LOCAL RULE 7-5 CERTIFICATION OF ERIK
S. MAURER IN SUPPORT OF PLAINTIFFS' EMERGENCY MOTION
FOR TEMPORARY RESTRAINING ORDER, SEIZURE ORDER, AND
PRELIMINARY INJUNCTION**

Int. Cl.: 25

Prior U.S. Cls.: 22 and 39

United States Patent and Trademark Office **Reg. No. 1,588,960**
Registered Mar. 27, 1990

**TRADEMARK
PRINCIPAL REGISTER**



CONVERSE INC. (DELAWARE CORPORATION)
ONE FORDHAM ROAD
NORTH READING, MA 018642680

FOR: ATHLETIC FOOTWEAR, IN CLASS 25
(U.S. CLS. 22 AND 39).

FIRST USE 0-0-1920; IN COMMERCE
0-0-1920.

THE LINING AND STIPPLING IN THE
MARK ARE FEATURES OF THE MARK AND
DOES NOT INTENDED TO INDICATE COLOR.

THE MARK CONSISTS OF A THREE DI-
MENSIONAL SOLE OF SHOE DESIGN.

SEC. 2(F).

SER. NO. 73-678,528, FILED 8-14-1987.

JANICE O'LEAR, EXAMINING ATTORNEY