

**UNITED STATES DISTRICT COURT
SOUTHERN DISTRICT OF NEW YORK**

In re: Methyl Tertiary Butyl Ether ("MTBE")
Products Liability Litigation

**Master File No. 1:00 - 1898
MDL 1358 (SAS)
M21-88**

This Document Relates to:

*New Jersey Department of Environmental
Protection, et al. v. Atlantic Richfield Co., et al.*
No. 1:08-cv-00312-SAS

**DECLARATION OF MOLLY MCGINLEY HAN IN SUPPORT OF PLAINTIFFS'
REPLY TO DEFENDANT GETTY PROPERTIES CORP.'S OPPOSITION TO THIRD-
PARTY DEFENDANTS' MOTION FOR SUMMARY JUDGMENT**

Dicker, General Counsel of Getty Realty Corp. to Michael G. Lewis, dated March 2, 2010.

8. Attached hereto as Exhibit 7 is a true and correct copy of excerpts from the Opinion and Order of J. Scheindlin in *In re MTBE: County of Suffolk v. Amerada Hess Corp.*, dated August 6, 2008.

9. Attached hereto as Exhibit 8 is a true and correct copy of excerpts of the Getty Realty Corp. 10-K for 2009 at Ex. 10.3, "Asset Purchase Agreement Among Power Test Corp. (n/k/a Getty Properties Corp.), Texaco Inc., Getty Oil Company and Getty Refining and Marketing

10. Attached hereto as Exhibit 9 is a true and correct copy of excerpts of documents produced by Texaco Inc. in this litigation and bate-stamped as CHEVMDL1358_NJDEP-UTX 00000000086 - 124. These documents are bate-stamped in a non-native format and therefore each single page as reviewed in native format extends for three pages in the non-native format. If the Court requests, counsel can supply a different format of this exhibit.

11. Attached hereto as Exhibit 10 is a true and correct copy of excerpts from ARCO Chemical Company's "MTBE Octane Enhancer: Technical Guidance and Recommended Practices for Storage and Handling," dated May 22, 1990.

12. Attached hereto as Exhibit 11 is a true and correct copy of excerpts from the "Defendant Getty Properties Corp.'s Amended Disclosure Pursuant to June 9, 2005 Directive," dated October 18, 2005.

13. Attached hereto as Exhibit 12 is a true and correct copy of excerpts from the ARCO Petroleum Products Company internal correspondence titled, "MTBE White Paper Revision" dated June 26, 1986.

14. Attached hereto as Exhibit 13 is a true and correct copy of a letter from Daniel F. Mulvihill to Robin L. Greenwald dated September 9, 2007.

15. Attached hereto as Exhibit 14 is a true and correct copy of excerpts from the deposition transcript of Robert Melecci taken in this action on September 12, 2012.

I declare under penalty of perjury that the foregoing is true and correct.

Executed this 27TH day of January, 2014 at Sacramento, California.


MOLLY MCGINLEY HAN

EXHIBIT 1



REVISED SITE SUMMARY

ID # - 41958 HP DELTA SERVICE STATION

Woodbridge Township, Middlesex County,
New Jersey

Prepared on behalf of:
New Jersey Department of Environmental Protection (NJDEP)
The Commissioner of the NJDEP
The Administrator of the New Jersey Spill Compensation Fund

For:
The Office of the Attorney General of New Jersey
and
Miller, Axline & Sawyer
The Law Office of John K. Dema
Berger & Montague
Cohn Lifland Pearlman Herrmann & Knopf

Project No.: 003-01

January 2013

Date/Period	Activity
April 5, 2007	<p data-bbox="570 281 1362 352">not refute that fact that MTBE and other COCs were release from the Site and into underlying groundwater.</p> <p data-bbox="570 394 1362 583">All-Phases Environmental drilled and sampled five soil borings at locations north of the existing UST locations (APE, 2007; 011241). Soil sample analytical results indicated MTBE, TBA, and benzene at concentrations up to 29 milligrams per kilogram (mg/kg), 27 mg/kg, and 0.087 mg/kg, respectively (APE, 2007; 011229).</p> <p data-bbox="570 625 1362 814">Unconsolidated sediment zone (Rahway Till) Monitoring Wells MW-1 through MW-12 were installed at the Site by Handex Consulting and Remediation (HRC) (HCR, 2006; 007098). These unconsolidated sediment zone wells are located on-site and terminate within the unconsolidated sediments located above the underlying bedrock (Table 1).</p> <p data-bbox="570 856 1362 1003">There was no indication that any soil samples collected during installation were submitted for laboratory analysis. Collection and analysis of soil samples could have been utilized to help delineate the extent of contamination on-site.</p>
May 2007	<p data-bbox="570 1052 1362 1283">Testing and sampling for remedial system design was conducted by HRC (HCR, 2006; 007098). Vacuum extraction tests were conducted on twelve monitoring wells (MW-1 through MW-12). Reportedly, concentrations of benzene, toluene, ethylbenzene, and xylenes (BTEX), MTBE, hexane and cyclohexane exceeded NJDEP Non-Residential Screening Levels (HCR, 2006; 007098).</p> <p data-bbox="570 1325 1362 1430">No information that documented observed radius of influence or calculated hydraulic properties of the unconsolidated sediments were located during review.</p> <p data-bbox="570 1472 1362 1633">Unconsolidated sediment zone monitoring wells MW-1 through MW-12 were sampled May 11, 2007. Benzene and MTBE as high as 24,200 µg/L and 276,000 µg/L, respectively, were detected in MW-8. TBA as high as 7,210 µg/L was detected in MW-5 (HCR, 2006; 007121-007123).</p>
June 12, 2007	<p data-bbox="570 1675 1362 1871">All Phases Environmental, on behalf of HP Delta, submitted a Site Investigation Report (APE, 2007). The scope of investigation included drilling and sampling four soil borings (TF-1 through TF-6). The highest detected benzene, MTBE and TBA concentrations were 27,000 micrograms per kilogram (µg/kg), 29,000 µg/kg, and 87 µg/kg, respectively. LNAPL was</p>

portion of the Site. The nearest off-site well to the west is OMW-3, located approximately 300 feet west of the Site. Benzene has not been detected in OMW-3. To the south, benzene in the unconsolidated sediments appears to be laterally delineated by wells OWM-2, OMW-9 and grab samples GW-12A and GW-12B. To the east, the lateral extent of benzene is delineated by grab samples GW-14A and GW-08A, located approximately 160 feet and 375 feet east, respectively, from the Site.

Benzene in groundwater is delineated both laterally and vertically in the unconsolidated sediments; however, there are no monitoring wells immediately off-site to the east to assess the effectiveness of the remediation efforts on groundwater in that area.

MTBE

MTBE in the groundwater of the unconsolidated sediments has been detected in each of the 24 on-site wells at concentrations as high as 276,000 µg/L (MW-8 on May 11, 2007). MTBE has been detected in off-site well OMW-11 at 3.9 µg/L on August 20, 2007. Low concentrations (0.31 µg/L to 0.66 µg/L) of MTBE have also been detected in off-site wells OMW-1, OMW-2, OMW-4, and in grab groundwater samples GW-18A and GW-20A collected from soil borings SB-18 and SB-20, respectively.

MTBE in groundwater is delineated both laterally and vertically in the unconsolidated sediments; however, there are no monitoring wells immediately off-site to the east to assess the effectiveness of remediation efforts on groundwater in that area.

TBA

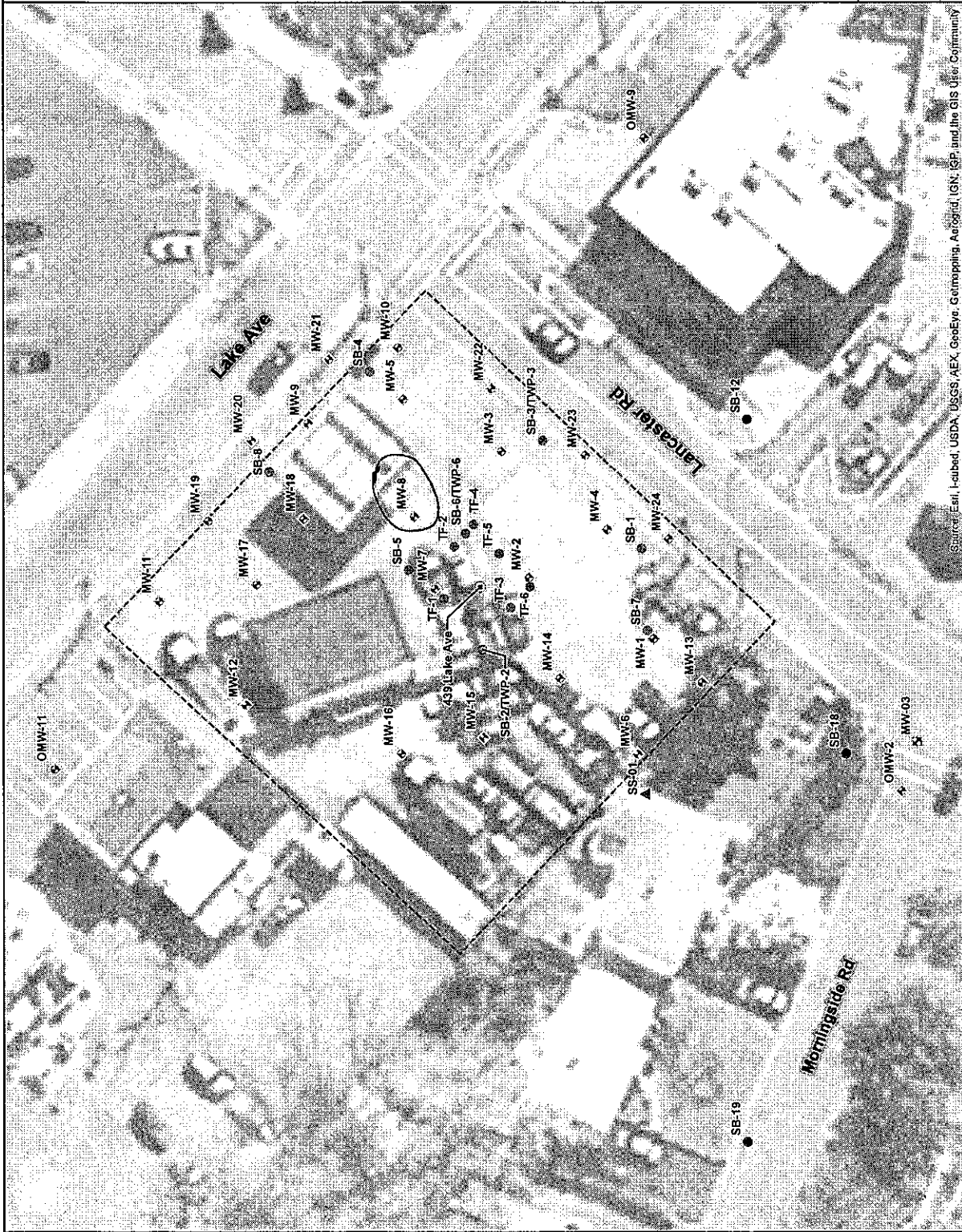
TBA has been detected only in on-site wells MW-1 through MW-9, MW-13, MW-15, MW-18, and MW-22 through MW-24 at concentrations ranging from 11 µg/L (MW-22 on March 20, 2009) to 14,400 µg/L (MW-8 on July 11, 2007). TBA has not been detected in any other well screened in the unconsolidated sediments beneath the Site.

TBA in groundwater is delineated both laterally and vertically in the unconsolidated sediments; however, there are no monitoring wells immediately off-site to the east to assess the effectiveness of the remediation efforts on the groundwater in that area.

6.4.3.2 Bedrock

Benzene

For bedrock wells MW-1 through MW-3, benzene was detected only once in well MW-1 (4.4 µg/L on March 9, 2010). Benzene has been detected off-site in the domestic supply wells



- Domestic Supply Well (Unknown Status)
- ◇ Monitoring Well, Unconsolidated Sediments
- ✱ Monitoring Well, Bedrock
- Hydropunch, Unconsolidated Sediments
- ⊙ Soil Boring
- ▲ Soil Sample
- [---] Approx. Site Boundary

Note: All locations are approximate.

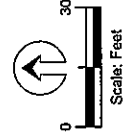
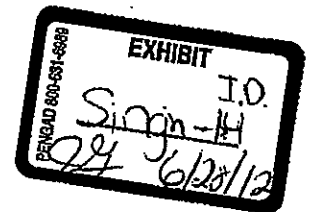


EXHIBIT 2



ANNUAL SITE UPDATE REPORT

HP Delta
439 Lake Avenue
Colonia, Middlesex County
New Jersey
ISRA Case No.: 86492

March 2010

Prepared for:

New Jersey Department of Environmental Protection
Bureau of Operation, Maintenance and Monitoring
PO Box 413
Trenton, NJ 08625

Attention: Jane Ten Eyck

Prepared by:

Vincent S. Barra
Senior Hydrogeologist
NJDEP License No. 423339

Reviewed by:

Greg J. Reuter
Senior Project Manager
NJDEP License No. 0012365

1.0 INTRODUCTION

Handex Consulting & Remediation – Northeast, LLC (HCR) has prepared the following Annual Site Update Report for the HP Delta service station located at 439 Lake Avenue, Colonia, Middlesex County, New Jersey. The report includes a summary of onsite and offsite monitoring well installations, groundwater sampling events, remedial system construction and operation, and hydrocarbon extraction from the subsurface. The report concludes with an evaluation of hydrocarbon removal at the site, as well as conclusions and recommendations.

2.0 SITE & AREA CHARACTERIZATION

The site is currently an operating gasoline service station and automobile repair shop. The site is also used for vehicle storage. A site plan showing the locations of pertinent features is included as **Figure 1**. Commercial properties are located adjacent to the site to the northwest, as well as to the northeast and southeast. Residential properties are located adjacent to the site the southwest.

Based on observations made during subsurface investigation activities, the site is underlain by red/brown silty clay, with varying amounts of sand and gravel. Bedrock consists of red/brown weathered shale, varying by depth across the site from 18-23 feet below grade (fbg). The site is located in the Passaic Formation, Piedmont Physiographic Province. A U.S.G.S. topographic map of the site and surrounding area is included as **Figure 2**.

3.0 MONITORING WELL INSTALLATION (April 2007)

Twelve 4-inch diameter monitoring wells (MW-1 through MW-12) were installed at the site in April 2007, and their locations are shown on **Figure 1**. The wells were completed to the top of bedrock, which varied across the site from 18-23 fbg. Soil cutting from the borings were screened with a flame ionization detector (FID), and elevated readings were recorded in most of the borings. The depth of hydrocarbon-impacted soils identified during drilling varied across the site, but were generally observed from approximately 3 fbg down to the top of bedrock. Groundwater was encountered at approximately 14-16 fbg. Based on these observations, MW-1 through MW-12 were constructed with 15-20 feet of 0.02-inch slot PVC screen.

4.0 REMEDIAL SYSTEM DESIGN TESTING

Testing and sampling for remedial system design was conducted in May 2007. Vacuum extraction tests were conducted on each of the twelve newly installed monitoring wells. Vacuum, air flow, and hydrocarbon concentration reading were collected from each well. Well-specific data is included on **Table 1**. The vacuum influence on surrounding wells was also recorded.

Air samples were collected from the wells via Summa canisters while under vacuum. The air samples were analyzed for volatile organic compounds (VOCs) via method TO-15. Each well sampled exceeded NJDEP Non-Residential Soil Gas Screening Levels for one or more of the following compounds: benzene, toluene, ethylbenzene, xylenes (total), methyl tertiary butyl ether (MTBE), hexane, cyclohexane.

The systems began operation on May 15, 2008. Through January 2010, the groundwater system has pumped and treated approximately 1.3 million gallons of groundwater (see Table 5), and the SVE system has extracted and treated approximately 2,116 pounds of hydrocarbons. Combined with hydrocarbon recovery via HEAT, approximately 4,471 pounds of hydrocarbons have been extracted from the subsurface and treated at the site from May 2008 through January 2010 (see Table 4). A graph of cumulative hydrocarbon recovery is included as Figure 4, and a graph of cumulative groundwater recovery is included as Figure 6.

13.0 GROUNDWATER SAMPLING (March 2009)

Monitoring wells at the site were gauged and sampled in March 2009. All sampling was conducted in accordance with the NJDEP's Field Sampling Procedures Manual (2005). The groundwater samples were analyzed for VOCs via USEPA method 8260. The results are summarized in Table 2.

As shown on Table 2, benzene concentrations in March 2009 ranged from less than 1 ppb in MW-1, through MW-3, MW-5, MW-10 through MW-12, MW-14, and MW-16 through MW-24 to 2,400 ppb in MW-8. Total BTEX concentrations in March 2009 ranged from less than 1 ppb in MW-1, through MW-3, MW-5, MW-10 through MW-12, MW-14, and MW-16 through MW-24 to 9,940 ppb in MW-8. MTBE concentrations in March 2009 ranged from less than 1 ppb in MW-1, MW-11, MW-12, MW-14, MW-16 through MW-20, MW-23, and MW-24 to 14,000 ppb in MW-8.

14.0 HYDROCARBON REMOVAL EVALUATION

As discussed above, a total of 4,471 pounds of hydrocarbons have been removed from the subsurface via HEAT and the SVE system. When we compare pre-remedial groundwater concentrations from May/July 2007 to those in March 2009, most concentrations are seen to be reduced by at least one order of magnitude. The table below illustrates this fact regarding the well with the highest pre-remedial concentration of benzene, total BTEX, and MTBE (MW-8):

MW-8 Groundwater Concentrations

	<u>May/July 2007 (pre-remedial)</u>	<u>April 2008</u>	<u>March 2009</u>
Benzene (ppb)	24,200	2,530	2,400
Total BTEX (ppb)	91,780	18,697	9,940
MTBE (ppb)	276,000	29,400	14,000

To further illustrate the impact of hydrocarbon recovery at this site, isopleth maps have been constructed for total BTEX (see Figures 7-9) and MTBE (see Figures 10-12) concentrations from May 2007 (pre-remedial), April 2008, and March 2009 groundwater sampling data.

As evidenced by comparing the May/July 2007 groundwater sampling results to the April 2008 groundwater sampling results, the focused removal of separate-phase hydrocarbons achieved via HEAT in the areas of MW-3 and MW-8 (discussed above) translated into a significant reduction in soluble-phase hydrocarbons at the site. As evidenced by comparing the April 2008 groundwater sampling results to the March 2009 groundwater sampling results, the addition of a

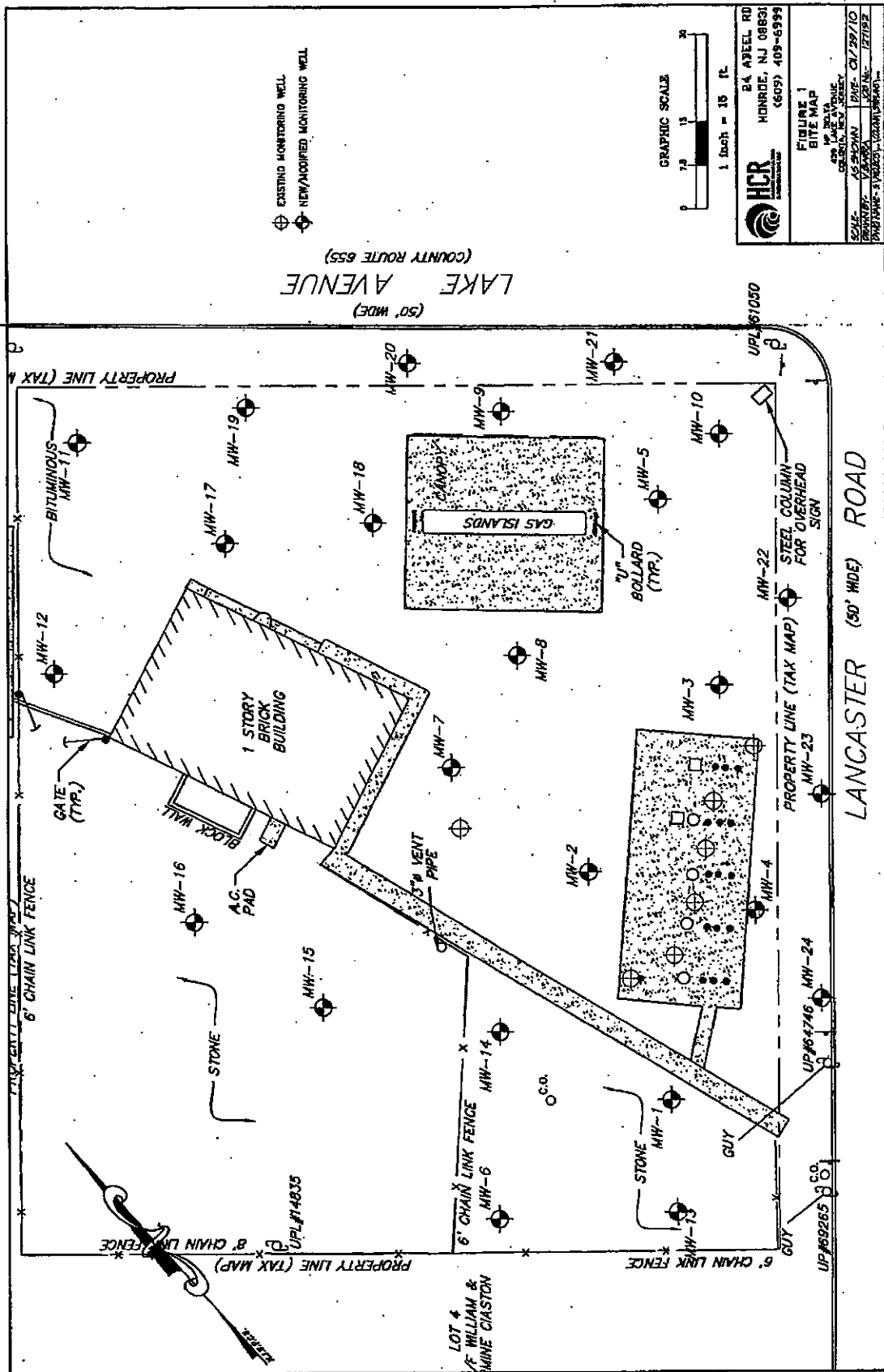


EXHIBIT 3

**UNITED STATES DISTRICT COURT
SOUTHERN DISTRICT OF NEW YORK**

**In Re: Methyl Tertiary Butyl Ether ("MTBE")
Products Liability Litigation
(SAS): M21-88**

Master File No. 1:00 – 1898
MDL 1358

This document relates to:

*New Jersey Department of Environmental Protection v.
Getty Properties Corp., et al., v. HP Delta, Robert
Melecci and Dhandi Transport, No. 08 Civ. 00312*

Expert Report of: James A. Schaefer, Jr.
Date: April 2, 2013



1754 Veterans Memorial Highway, Suite 24, Islandia, NY 11749 p | 631.218.0612 f | 631.218.0787

EXHIBIT 4

**EXPERT REPORT ON THE SOURCE AND AGE OF SUBSURFACE
GASOLINE CONTAMINATION AT THE DELTA GAS SERVICE
STATION SITE IN COLONIA, NEW JERSEY**

**H. P. DELTA, INC. v. ROBERT MELECCI and GETTY
PROPERTIES CORPORATION v. DHANDI TRANSPORT
DOCKET NO. MID-L-7781-07**

prepared for:

Stuart J. Lieberman, Esq.
Lieberman & Blecher
10 Jefferson Plaza
Princeton, New Jersey 08540

prepared by:

Gil Oudijk
Triassic Technology, Inc.
57 Hamilton Avenue
Hopewell, New Jersey 08525



December 14, 2010



NJMTBE-HPDELTA-001671

EXPERT REPORT ON THE SOURCE AND AGE OF SUBSURFACE GASOLINE CONTAMINATION
AT THE DELTA GAS SERVICE STATION SITE IN COLONIA, NEW JERSEY
DECEMBER 15, 2010
PAGE 3

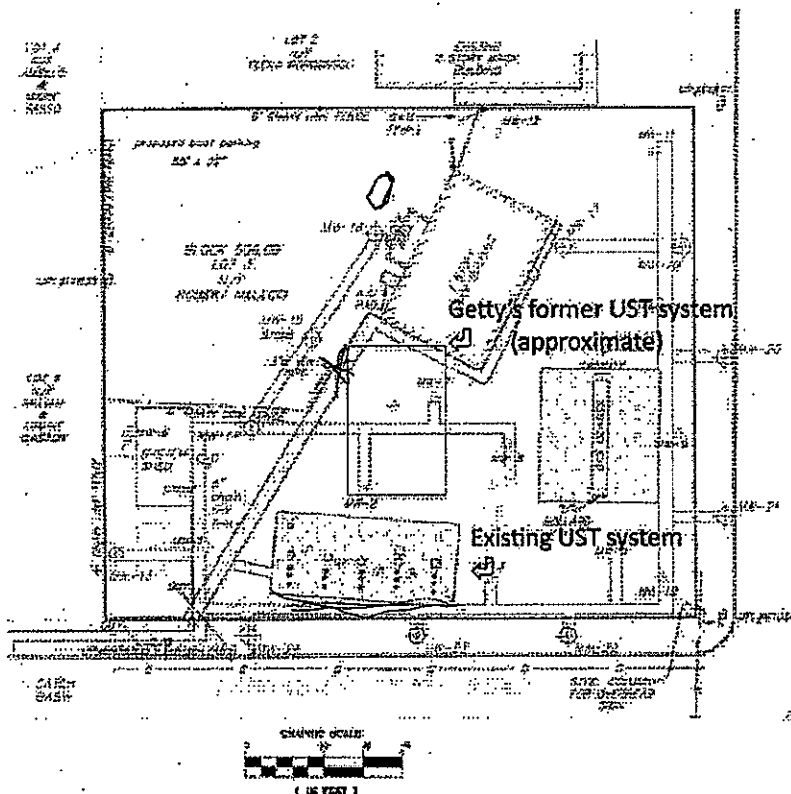


Figure 1. --Location of existing and former UST systems and monitoring wells at the Delta Gas site. North is to the top of the page. Source: Handex (2007)

There are three pieces of evidence that indicate that gasoline release(s) at the Delta Gas site predated HPD's arrival in November 2003:

- the laboratory analysis of a gasoline NAPL sample collected in August 2006 from a well within the UST system. The data indicate that the gasoline was refined sometime in the 1980s;
- the laboratory results of ground-water samples collected from on-site monitoring wells in June 2010. The data revealed the presence of the organo-lead degradation byproducts: triethyl lead and methyldiethyl lead. The presence of these compounds indicates that leaded gasoline release(s) began at the site in or before 1984, and



NJMTBE-HPDELTA-001675

EXPERT REPORT ON THE SOURCE AND AGE OF SUBSURFACE GASOLINE CONTAMINATION
AT THE DELTA GAS SERVICE STATION SITE IN COLONIA, NEW JERSEY

DECEMBER 15, 2010

PAGE 28

- based on the information provided to and obtained by Triassic, the gasoline contamination beneath the Delta Gas site and within the down-gradient neighborhood originated from leakages at Getty's former UST system.



NJMTBE-HPDELTA-001700

EXHIBIT 5

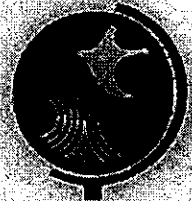
DRAFT REMEDIAL INVESTIGATION REPORT

HP Delta / Rob's Service Station

Woodbridge, New Jersey

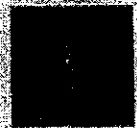
**Remedial Investigation/
Remedial Action Selection
Term Contract No.
A-73073**

Submitted to:



STATE OF NEW JERSEY
Department of
Environmental Protection
Site Remediation Program
and Construction
401 East State Street
Trenton, New Jersey 08625

Submitted by:



The Louis Berger Group, Inc.
412 Mount Kemble Avenue
Morristown, New Jersey 07962

April 2010

NJDEP-SITE233-006697



EXHIBIT 6

Getty Realty

GETTY REALTY CORP.

JOSHUA DICKER
Vice President, General Counsel and Secretary

Via Overnight Delivery and E-Mail

March 2, 2010

Michael G. Lewis, Esq.
Vice President and General Counsel
Getty Petroleum Marketing, Inc.
LUKOIL Plaza
1500 Hempstead Turnpike
East Meadow, NY 11554

Re: H.P. Delta, Inc. v. Robert Melecci and Getty Properties Corporation
Docket No.: L-7781-07. Relating to former location #95322, 439 Lake Ave., Colonia,
New Jersey 07067, Middlesex County.

Dear Mike:

Getty Properties Corp. ("GPC") is a named defendant in a recently received Complaint filed by plaintiff H.P. Delta, Inc. seeking damages, contribution and a declaratory judgment arising out of alleged environmental contamination at the above-referenced property (the "Site"). A copy of the Summons and Complaint is enclosed for your reference. The Complaint also names the current property owner, Robert Melecci, as a defendant. The Complaint alleges that GPC owned the underground storage tanks ("USTs") that contributed to the presence of contamination at the Site and failed to fully remediate such contamination. The plaintiff further claims that it has and will continue to incur costs to investigate and remediate contamination at the Site.

The Site in issue is former Getty Petroleum Corp. ("Getty Petroleum") site No. 95322. Based on our internal investigations, we believe that the USTs in question existed at the Site as of 1975 and were leased by Getty Oil Company ("Getty Oil") to former property owners and operators of the Site, including Lino Silva (from approximately 1975 until 1983) and Robert Melecci (from approximately 1983 to 1987). Our research shows that Getty Oil supplied product to the subject USTs for a period beginning sometime in the 1970s until sometime in June/July 1987, while Mr. Silva and later Mr. Melecci owned and operated the Site. The dealer/supply contract at the Site was either terminated or expired as of July 1987. Getty Oil's business successor, Getty Petroleum, ceased supplying the subject USTs in or around that date. Beginning in June/July 1987, Getty Petroleum, at the request of the New Jersey Department of Environmental Protection and the Township of Woodbridge, removed the USTs in question, excavated, and removed contaminated soil from the Site.

17600/10
03/02/2010 13597768.4

125 Jericho Turnpike • Suite 103 • Jericho, NY 11753
Tel: 516.478.5451 • Fax: 516.478.5490
e-mail: jdicker @ gettyrealty.com

GPC 00050

NJMTBE-HPDELTA-000051

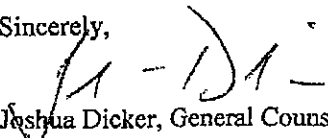
Pursuant to that certain Reorganization and Distribution Agreement, dated as of January 31, 1997, between Getty Petroleum and GPMI (the "Distribution Agreement"), Getty Petroleum formally spun off to GPMI the business relating to the purchase, storage, marketing and distribution of heating oil and fuels, including motor fuels (the "Marketing Business") and retained the business relating to the acquisition, development, leasing and disposal of real estate (the "Real Estate Business"). In turn, GPMI assumed and agreed to pay, perform and discharge all "Marketing Liabilities" (see, e.g., Sections 2.02 and 3.01 of the Distribution Agreement), which included all liabilities relating to or arising out of or in connection with the Marketing Business, other than Indemnified Environmental Liabilities (see Section 1.01 of the Distribution Agreement). The Site and USTs in issue in this matter, and the alleged contamination related thereto, are not Indemnified Environmental Liabilities under the Distribution Agreement. Accordingly, any obligation to respond to or address the allegations set forth in the attached Complaint, and any liabilities arising in connection therewith, belong to GPMI.

Pursuant to Section 5.02 of the Distribution Agreement, GPMI has agreed to indemnify Getty Petroleum (n/k/a GPC) from the obligations and liabilities arising from any contamination at the Site as alleged in the enclosed Complaint.

In light of the foregoing, and without any limitation to any other rights and remedies available to GPC at law or in equity (all of which are expressly reserved), pursuant to Section 5.04 of the Distribution Agreement, we hereby tender to you for defense and indemnification and demand that GPMI hold GPC harmless from all obligations and liabilities arising from and in connection with contamination at the Site, the Complaint, and all related matters.

We have engaged Lowenstein Sandler PC (65 Livingston Avenue, Roseland, NJ 07068, attn: Richard F. Ricci, Esq.) to represent GPC in connection with the Complaint. At this time we are not seeking reimbursement of costs and expenses expended to date in defense of the claims. However, we request your written confirmation with seven (7) days of the date hereof of your indemnification obligations so that we may arrange for transition of these matters to your counsel.

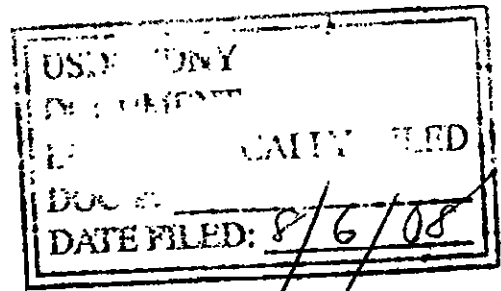
Sincerely,


Joshua Dicker, General Counsel

cc: Kevin Shea
Richard F. Ricci, Esq.

EXHIBIT 7

UNITED STATES DISTRICT COURT
SOUTHERN DISTRICT OF NEW YORK



----- X
IN RE: METHYL TERTIARY BUTYL
ETHER ("MTBE") PRODUCTS
LIABILITY LITIGATION

OPINION AND ORDER

Master File No. 1:00-1898
MDL 1358 (SAS)
M21-88

This document relates to:

County of Suffolk v. Amerada Hess Corp., et
al., 04 Civ. 5424
----- X

SHIRA A. SCHEINDLIN, U.S.D.J.:

I. INTRODUCTION

After discovering that many of their wells were contaminated with the gasoline additive methyl tertiary butyl ether ("MTBE"), plaintiffs in each of the cases in this multi-district litigation ("MDL"), including the County of Suffolk and the Suffolk County Water Authority, sued numerous oil companies for their use and handling of MTBE. One of the defendants is Getty Properties Corporation ("Getty Properties"), which is named "individually and formerly known as Getty Petroleum Corp."¹

Getty Properties brings this motion for summary judgment, arguing

¹ See, e.g., Sixth Amended Complaint, *County of Suffolk and Suffolk County Water Authority v. Amerada Hess Corp., et al.*, No. 04 Civ. 5424.

that all claims against it must be dismissed. It submits that Getty Petroleum Marketing, Inc. ("GPMI"), a spin-off corporation of its predecessor Getty Petroleum Corp., is the successor in interest to Getty Petroleum's marketing business, and therefore only GPMI can be liable for claims arising out of Getty Petroleum's gasoline releases prior to the spin-off. Both plaintiffs and GPMI oppose the motion. For the reasons stated below, Getty Properties' motion is denied.

II. BACKGROUND

A. History of the Corporate Entities

Getty Petroleum Corp. was formed in 1985 when its predecessor, Power Test Inc., purchased the northeastern United States petroleum distribution and marketing assets of the former Getty Oil Company, as well as the "Getty" trademark, from Texaco and changed its name to Getty Petroleum Corp.² The company's business included the distribution and marketing of petroleum products as well as the acquisition and leasing of properties involved in the distribution and marketing business such as gasoline terminals and gas stations.³

² See Defendant Getty Properties Corp.'s Local Rule 56.1 Statement of Undisputed Material Facts ("Getty Rule 56.1 Statement") ¶ 2.

³ See *id.* ¶ 3.

In March 1997, Getty Petroleum spun off most of its marketing business into a new corporate entity, GPMI. According to Getty Petroleum's Board of Directors, the separation was warranted due to the "distinctly different investment, operating and financial characteristics" of the marketing and real estate businesses – while the real estate business was relatively stable, the marketing business was highly volatile.⁴ New shares of GPMI common stock were issued to holders of Getty common stock.⁵ GPMI's initial Board of Directors included directors of Getty Petroleum, and all of GPMI's initial executive officers were former executive officers of Getty Petroleum.⁶ Additionally, substantially all of the employees of Getty Petroleum who had been involved in the marketing business became employees of GPMI after the spin-off.⁷

Getty Petroleum and GPMI entered into a Reorganization and Distribution Agreement governing the terms of the spin-off on January 31, 1997. Under that Agreement Getty Petroleum transferred assets principally involved in

⁴ Information Statement, Getty Petroleum Marketing, Inc. Common Stock, Ex. C to Declaration of John McGahren in Support of Getty Properties Corp.'s Motion for Partial Summary Judgment ("McGahren Decl."), at 9.

⁵ *See id.* at 5.

⁶ *See* Getty Rule 56.1 Statement ¶ 16.

⁷ *See id.* ¶ 17.

the marketing business to GPMI, and GPMI expressly assumed the Getty Petroleum's marketing liabilities.⁸ Getty Petroleum retained certain environmental liabilities relating to sites that were currently contaminated and undergoing remediation, and sites where it had not yet upgraded underground storage tanks ("USTs") to comply with 1998 federal standards.⁹

At the time of the spin-off, Getty Petroleum Corp. changed its name to Getty Realty Corp. and leased 1,037 gas station and gasoline terminal properties to GPMI for its gasoline distribution and retail sales business.¹⁰ The parties entered into a Master Lease setting forth, *inter alia*, each party's respective obligations regarding environmental remediation at the leased sites. The Lease specified 694 sites leased to GPMI for which Getty Realty remained obligated to remediate known contamination and/or perform upgrades to USTs.¹¹ In 2000, after Getty Realty changed its name to Getty Properties Corp. and GPMI was acquired by Lukoil Oil Company, the parties entered into a new master lease,

⁸ See Reorganization and Distribution Agreement ("Reorganization Agreement"), Ex. D to McGahren Decl.

⁹ See *id.*

¹⁰ See Master Lease Dated February 1, 1997 Between Getty Realty Corp., as Landlord, and Getty Petroleum Marketing, Inc., as Tenant ("Master Lease"), Ex. G to McGahren Decl.

¹¹ See *id.*

which similarly set forth the parties' respective obligations regarding environmental remediation at the leased properties.¹² The parties also entered into an Environmental Indemnity Agreement at that time, which further specified the parties' obligations with respect to environmental remediation and other environmental liabilities.¹³

In addition to leasing gas station and terminal properties to GPMI, Getty Properties owns the "Getty" trademark and licenses it to GPMI under a License Agreement entered into at the time of the spin-off.¹⁴ The Agreement requires GPMI to comply with Getty Properties' quality standards for petroleum products and station operations.¹⁵

B. Procedural History

Getty Properties is named as a defendant in forty-three cases in this MDL. In this action, a focus case in the MDL, eighteen of plaintiffs' numerous

¹² See Consolidated, Amended and Restated Master Lease Dated as of November 2, 2000 Between Getty Properties Corp., as Landlord, and Getty Petroleum Marketing Inc., as Tenant ("Amended Lease"), Ex. H to McGahren Decl.

¹³ See Environmental Indemnity Agreement, Ex. I to McGahren Decl.

¹⁴ See Amended and Restated Trademark License Agreement, Ex. 4 to the Declaration of William Harrington in Opposition to Getty Properties' Motion for Summary Judgment ("Harrington Decl.").

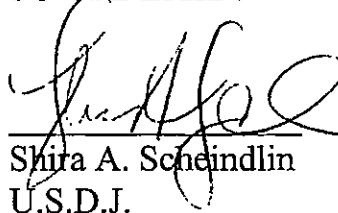
¹⁵ See *id.* at 6-8.

opposition to this motion supports a finding that the 19 Terminal Road facility falls under this category. Therefore, Getty Properties will ultimately be responsible for any recovery plaintiffs obtain at trial on claims arising from the spill at this site.

V. CONCLUSION

For the reasons stated above, Getty Properties' motion for summary judgment is denied. The Clerk of the Court is directed to close this motion (docket # 1904 in the Master File, # 224 in the Individual Case file).

SO ORDERED:



Shira A. Scheindlin
U.S.D.J.

Dated: New York, New York
August 5, 2008

EXHIBIT 8

10-K 1 i00097_getty-10k.htm

**UNITED STATES
SECURITIES AND EXCHANGE COMMISSION
WASHINGTON, D.C. 20549**

FORM 10-K

☒ ANNUAL REPORT PURSUANT TO SECTION 13 OR 15(d) OF THE SECURITIES EXCHANGE ACT OF 1934

FOR THE FISCAL YEAR ENDED DECEMBER 31, 2009

OR

☐ TRANSITION REPORT PURSUANT TO SECTION 13 OR 15(d) OF THE SECURITIES EXCHANGE ACT OF 1934

COMMISSION FILE NUMBER 001-13777

GETTY REALTY CORP.

(Exact name of registrant as specified in its charter)

Maryland

(State or other jurisdiction of incorporation or organization)

11-3412575

(I.R.S. employer identification no.)

125 Jericho Turnpike, Suite 103, Jericho, New York

(Address of principal executive offices)

11753

(Zip Code)

Registrant's telephone number, including area code: (516) 478-5400

Securities registered pursuant to Section 12(b) of the Act:

TITLE OF EACH CLASS

NAME OF EACH EXCHANGE ON WHICH REGISTERED

Common Stock, \$0.01 par value

New York Stock Exchange

Securities registered pursuant to Section 12(g) of the Act:

None

(Title of Class)

Indicate by check mark whether the registrant has submitted electronically and posted on its corporate Web site, if any, every Interactive Data File required to be submitted and posted pursuant to Rule 405 of Regulation S-T during the preceding 12 months (or for such shorter period that the registrant was required to submit and post such files).

Yes ☐ No ☐

Indicate by check mark if the registrant is a well-known seasoned issuer, as defined in Rule 405 of the Securities Act.

Yes ☐ No ☒

EXHIBIT INDEX

GETTY REALTY CORP.
Annual Report on Form 10-K
for the year ended December 31, 2009

EXHIBIT NO.	DESCRIPTION	
2.1	Agreement and Plan of Reorganization and Merger, dated as of December 16, 1997 (the "Merger Agreement") by and among Getty Realty Corp., Power Test Investors Limited Partnership and CLS General Partnership Corp.	Filed as Exhibit 2.1 to Company's Registration Statement on Form S-4, filed on January 12, 1998 (File No. 333-44065), included as Appendix A To the Joint Proxy Statement/Prospectus that is a part thereof, and incorporated herein by reference.
3.1	Articles of Incorporation of Getty Realty Holding Corp. ("Holdings"), now known as Getty Realty Corp., filed December 23, 1997.	Filed as Exhibit 3.1 to Company's Registration Statement on Form S-4, filed on January 12, 1998 (File No. 333-44065), included as Appendix D. to the Joint Proxy/Prospectus that is a part thereof, and incorporated herein by reference.
3.2	Articles Supplementary to Articles of Incorporation of Holdings, filed January 21, 1998.	Filed as Exhibit 3.2 to Company's Annual Report on Form 10-K for the year ended December 31, 2008 (File No. 001-13777) and incorporated herein by reference.
3.3	By-Laws of Getty Realty Corp.	Filed as Exhibit 3.3 to Company's Annual Report on Form 10-K for the year ended December 31, 2008 (File No. 001-13777) and incorporated herein by reference.
3.4	Articles of Amendment of Holdings, changing its name to Getty Realty Corp., filed January 30, 1998.	Filed as Exhibit 3.4 to Company's Annual Report on Form 10-K for the year ended December 31, 2008 (File No. 001-13777) and incorporated herein by reference.
3.5	Amendment to Articles of Incorporation of Holdings, filed August 1, 2001.	Filed as Exhibit 3.5 to Company's Annual Report on Form 10-K for the year ended December 31, 2008 (File No. 001-13777) and incorporated herein by reference.
4.1	Dividend Reinvestment/Stock Purchase Plan.	Filed under the heading "Description of Plan" on pages 4 through 17 to Company's Registration Statement on Form S-3D, filed on April 22, 2004 (File No. 333-114730) and incorporated herein by reference.
10.1*	Retirement and Profit Sharing Plan (amended and restated as of January 1, 2002), adopted by the Company on September 3, 2002.	Filed as Exhibit 10.1 to Company's Annual Report on Form 10-K for the year ended December 31, 2008 (File No. 001-13777) and incorporated herein by reference.
10.2*	1998 Stock Option Plan, effective as of January 30, 1998.	Filed as Exhibit 10.1 to Company's Registration Statement on Form S-4, filed on January 12, 1998 (File No. 333-44065), included as Appendix H to the Joint Proxy Statement/Prospectus that is a part thereof, and incorporated herein by reference.

10.3**	Asset Purchase Agreement among Power Test Corp. (now known as Getty Properties Corp.), Texaco Inc., Getty Oil Company and Getty Refining and Marketing Company, dated as of December 21, 1984.	(a)
10.4	Assignment of Trademark Registrations	Filed as Exhibit 10.4 to Company's Annual Report on Form 10-K for the fiscal year ended January 31, 2007 (File No. 001-13777) and incorporated herein by reference.
10.5*	Form of Indemnification Agreement between the Company and its directors.	Filed as Exhibit 10.5 to Company's Annual Report on Form 10-K for the year ended December 31, 2008 (File No. 001-13777) and incorporated herein by reference.
10.6*	Amended and Restated Supplemental Retirement Plan for Executives of the Getty Realty Corp. and Participating Subsidiaries (adopted by the Company on December 16, 1997 and amended and restated effective January 1, 2009).	Filed as Exhibit 10.6 to Company's Annual Report on Form 10-K for the year ended December 31, 2008 (File No. 001-13777) and incorporated herein by reference.
10.7*	Letter Agreement dated June 12, 2001 by and between Getty Realty Corp. and Thomas J. Stimweis regarding compensation upon change in control.	Filed as Exhibit 10.7 to Company's Annual Report on Form 10-K for the year ended December 31, 2008 (File No. 001-13777) and incorporated herein by reference.
10.8	Form of Reorganization and Distribution Agreement between Getty Petroleum Corp. (now known as Getty Properties Corp.) and Getty Petroleum Marketing Inc. dated as of February 1, 1997.	Filed as Exhibit 10.8 to Company's Annual Report on Form 10-K for the year ended December 31, 2008 (File No. 001-13777) and incorporated herein by reference.
10.9	Form of Tax Sharing Agreement between Getty Petroleum Corp (now known as Getty Properties Corp.) and Getty Petroleum Marketing Inc.	Filed as Exhibit 10.9 to Company's Annual Report on Form 10-K for the year ended December 31, 2008 (File No. 001-13777) and incorporated herein by reference.
10.10	Consolidated, Amended and Restated Master Lease Agreement dated November 2, 2000 between Getty Properties Corp. and Getty Petroleum Marketing Inc.	Filed as Exhibit 10.10 to Company's Annual Report on Form 10-K for the year ended December 31, 2008 (File No. 001-13777) and incorporated herein by reference.
10.11	Environmental Indemnity Agreement dated November 2, 2000 between Getty Properties Corp. and Getty Petroleum Marketing Inc.	(a)
10.12	Amended and Restated Trademark License Agreement, dated November 2, 2000, between Getty Properties Corp. and Getty Petroleum Marketing Inc.	(a)
10.13	Trademark License Agreement, dated November 2, 2000, between Getty TM Corp. and Getty Petroleum Marketing Inc.	(a)
10.14*	2004 Getty Realty Corp. Omnibus Incentive Compensation Plan.	(a)

EX-10.3 3 i00097_ex10-3.htm

EXHIBIT 10.3 ASSET PURCHASE AGREEMENT AMONG POWER TEST CORP. (NOW KNOWN AS GETTY PROPERTIES CORP.), TEXACO INC., GETTY OIL COMPANY AND GETTY REFINING AND MARKETING COMPANY, DATED AS OF DECEMBER 21, 1984.

[Conformed Copy - As Executed]

ASSET PURCHASE AGREEMENT

Dated December 21, 1984

between

Power Test Corp.

and

Texaco Inc.,
Getty Oil Company, and
Getty Refining and Marketing Company

Purchase by Power Test Corp. of assets consisting of the petroleum marketing operations of Getty Oil Company located in the Northeast.

the Assets, taken as a whole, if Buyer or the Realty Company would have a claim for indemnity under Sections 12 or 13 herein (without giving effect to the threshold limitation of Section 13(g) herein) with respect to transactions or events which exceed \$10,000 individually or \$100,000 in the aggregate.

14. Related Agreements. At the Closing, the appropriate parties will enter into the Trademark License Agreement, the Supply Agreement and the Delaware City Handling Agreement and, if required, the ECRA Agreement as set forth below.

(a) Trademark License Agreement. At the Closing, Texaco, GOC and Buyer shall enter into a Trademark License Agreement substantially in the form of Exhibit P hereto (the "Trademark License Agreement") in respect of the Trademarks, including, without limitation, the trade name and trademark "Getty" or any variation thereof or combination of words therewith and as otherwise described in the Trademark License Agreement.

(b) Supply Agreement and Delaware City Handling Agreement. At the Closing, Buyer and Texaco shall enter into a Product Supply Agreement substantially in the form of Exhibit Q hereto (the "Supply Agreement") and related Delaware City Handling Agreement substantially in the form of Exhibit R hereto (the "Delaware City Handling Agreement") pursuant to which Texaco agrees that for a period of three years after the Closing, it will sell to Buyer, at Buyer's

}

option, up to (i) 22 million barrels per annum of Buyer's requirements for gasoline products for the Operation, and (ii) 11 million barrels per annum of Buyer's requirements for middle distillate petroleum products for the Operation.

It is understood and agreed that the prices (and other terms and conditions) to be paid by Buyer for petroleum products to be sold by Texaco under the Supply Agreement for three years were negotiated as part of the total consideration to be paid by Buyer for the Assets to be transferred to Buyer pursuant to this Agreement and that Texaco would not offer such petroleum product prices (and other terms and conditions) for such a lengthy period of time except in the context of the transaction which is the subject of this Agreement. It is also understood and agreed that Texaco's supply obligation to Buyer under this Agreement and under the Supply Agreement is only for the aforesaid three year term. If Buyer has not obtained alternative sources of supply after the aforesaid three year term of the Supply Agreement, Texaco shall have no obligation to provide petroleum products to Buyer at any price after the expiration of the aforesaid three year term. Buyer agrees to waive, and does hereby waive, any claim that it may have to have petroleum products supplied to it after the aforesaid three year term. Buyer further understands and agrees that if, for any reason, Texaco should at any time enter into negotiations to supply Buyer after the expiration of the Supply Agreement, Buyer shall not assert any right to a

EXHIBIT 9



WALLACE KING DOMIKE & REISKIN, PLLC

2900 K STREET, NW
HARBORSIDE, SUITE 500
WASHINGTON, DC 20007

T: 202.204.1000
F: 202.204.1001
WWW.WALLACEKING.COM

WILLIAM F. HUGHES
202.204.3727
BHUGHES@WALLACEKING.COM



Feb 6 2009
6:48PM

February 6, 2009

By First Class Mail and E-Mail

Scott E. Kauff
Law Offices of John K. Dema, P.C.
One Central Plaza
11300 Rockville Pike, Suite 112
Rockville, Maryland 20852

***Re: New Jersey Department of Environmental Protection, et al. v. Atlantic
Richfield Co., et al (MDL 1358, Master File No. 1:00-1898)***

Dear Scott:

On behalf of Texaco Inc. and Unocal Corporation, enclosed is a CD containing the following electronic data responsive to CMO #45: CHEVMDL1358_NJDEP-UTX 0000000001 - CHEVMDL1358_NJDEP-UTX 0000000950. Due to its volume, we were unable to serve the data via LNFS or email along with Texaco's and Unocal's CMO #45 responses.

Please note that the data on the CD is encrypted. Instructions on how to decrypt the data are enclosed. The password is 0001IT1912.

Please feel free to contact me if you have any questions regarding this matter.

Very truly yours,

William F. Hughes

Enclosures

cc: Liaison Counsel

Page 1

AMOUNTS	GALLONS	PRDCT	FIS PRODUCT CLASS	CLTRD	CLASS-OF-TRADE-GROUP	SUPPLT
-\$139,699.12	-223,898.14	60300	UNLEADED GASOLINE	47	OTHER CONSUMERS	000047
-\$902.10	-1,500.66	60300	UNLEADED GASOLINE	33	CONSUMER JOBBERS	000047
-\$263,736.34	-443,890.20	60300	UNLEADED GASOLINE	31	DISTRIBUTORS	000047
-\$180,392.46	-303,706.20	60300	UNLEADED GASOLINE	31	DISTRIBUTORS	000047
-\$448,462.31	-666,589.56	60300	UNLEADED GASOLINE	23	OTHER RETAILERS	000047
-\$119,082.98	-182,814.24	60300	UNLEADED GASOLINE	21	INVESTMENT RETAILERS	000047
-\$1,708,645.50	-2,540,755.56	60300	UNLEADED GASOLINE	21	INVESTMENT RETAILERS	000047
-\$173,701.80	-290,056.30	60300	UNLEADED GASOLINE	47	OTHER CONSUMERS	000047
-\$184,576.09	-325,467.66	60300	UNLEADED GASOLINE	31	DISTRIBUTORS	000047
-\$213,498.56	-375,485.46	60300	UNLEADED GASOLINE	31	DISTRIBUTORS	000047
-\$463,077.42	-680,232.00	60300	UNLEADED GASOLINE	23	OTHER RETAILERS	000047
-\$131,249.45	-199,096.06	60300	UNLEADED GASOLINE	21	INVESTMENT RETAILERS	000047
-\$1,801,978.55	-2,656,750.32	60300	UNLEADED GASOLINE	21	INVESTMENT RETAILERS	000047
-\$1,582,930.58	-2,417,288.58	60300	UNLEADED GASOLINE	21	INVESTMENT RETAILERS	000047
-\$137,199.56	-246,652.98	60300	UNLEADED GASOLINE	47	OTHER CONSUMERS	000047
-\$394.20	-1,199.94	60300	UNLEADED GASOLINE	37	OTHER WHOLESALERS	000047
-\$295,612.65	-561,246.84	60300	UNLEADED GASOLINE	31	DISTRIBUTORS	000047
-\$101,299.30	-157,601.22	60300	UNLEADED GASOLINE	21	INVESTMENT RETAILERS	000047
-\$74,159.40	-140,948.22	60300	UNLEADED GASOLINE	31	DISTRIBUTORS	000047
-\$424,833.28	-645,911.28	60300	UNLEADED GASOLINE	23	OTHER RETAILERS	000047
-\$1,632,462.88	-2,510,873.10	60300	UNLEADED GASOLINE	21	INVESTMENT RETAILERS	000047
-\$153,800.56	-272,810.58	60300	UNLEADED GASOLINE	47	OTHER CONSUMERS	000047
-\$7,093.06	-12,500.88	60300	UNLEADED GASOLINE	37	OTHER WHOLESALERS	000047
-\$1,122.59	-2,098.74	60300	UNLEADED GASOLINE	33	CONSUMER JOBBERS	000047
-\$189,028.57	-368,192.18	60300	UNLEADED GASOLINE	31	DISTRIBUTORS	000047
-\$170,967.77	-317,624.58	60300	UNLEADED GASOLINE	31	DISTRIBUTORS	000047
-\$412,900.72	-634,450.32	60300	UNLEADED GASOLINE	23	OTHER RETAILERS	000047
-\$93,325.37	-146,901.72	60300	UNLEADED GASOLINE	21	INVESTMENT RETAILERS	000047
-\$19,833.17	-33,501.72	60300	UNLEADED GASOLINE	37	OTHER WHOLESALERS	000047
-\$1,476,378.25	-2,275,435.68	60300	UNLEADED GASOLINE	21	INVESTMENT RETAILERS	000047
-\$90,046.14	-141,803.34	60300	UNLEADED GASOLINE	21	INVESTMENT RETAILERS	000047
-\$382,208.08	-587,143.20	60300	UNLEADED GASOLINE	23	OTHER RETAILERS	000047
-\$402,473.19	-691,527.06	60300	UNLEADED GASOLINE	31	DISTRIBUTORS	000047
-\$34,600.64	-59,419.92	60300	UNLEADED GASOLINE	31	DISTRIBUTORS	000047
-\$171,444.90	-280,521.36	60300	UNLEADED GASOLINE	47	OTHER CONSUMERS	000047
-\$219,378.32	-372,655.92	60300	UNLEADED GASOLINE	47	OTHER CONSUMERS	000047
-\$24,753.22	-44,739.66	60300	UNLEADED GASOLINE	37	OTHER WHOLESALERS	000047
-\$398,902.07	-719,982.48	60300	UNLEADED GASOLINE	31	DISTRIBUTORS	000047
-\$405,809.15	-617,988.00	60300	UNLEADED GASOLINE	23	OTHER RETAILERS	000047
-\$34,259.94	-131,345.34	60300	UNLEADED GASOLINE	21	INVESTMENT RETAILERS	000047
-\$1,637,390.27	-2,500,253.70	60300	UNLEADED GASOLINE	21	INVESTMENT RETAILERS	000047
-\$169,164.57	-206,192.70	60300	SUPER UNLEADED GASOLINE	21	INVESTMENT RETAILERS	000047
-\$2,495.55	-3,299.52	60303	SUPER UNLEADED GASOLINE	47	OTHER CONSUMERS	000047
-\$3,686.62	-5,201.70	60303	SUPER UNLEADED GASOLINE	33	CONSUMER JOBBERS	000047
-\$646,594.25	-905,907.66	60303	SUPER UNLEADED GASOLINE	31	DISTRIBUTORS	000047
-\$693,341.11	-794,340.54	60303	SUPER UNLEADED GASOLINE	23	OTHER RETAILERS	000047
-\$2,069,823.83	-2,597,833.14	60303	SUPER UNLEADED GASOLINE	21	INVESTMENT RETAILERS	000047
-\$167,962.53	-202,757.52	60303	SUPER UNLEADED GASOLINE	21	INVESTMENT RETAILERS	000047
-\$566,142.87	-822,824.94	60303	SUPER UNLEADED GASOLINE	31	DISTRIBUTORS	000047
-\$641,083.21	-797,211.66	60303	SUPER UNLEADED GASOLINE	23	OTHER RETAILERS	000047
-\$2,134,482.24	-2,658,211.08	60303	SUPER UNLEADED GASOLINE	21	INVESTMENT RETAILERS	000047
-\$574,762.22	-735,329.28	60303	SUPER UNLEADED GASOLINE	21	INVESTMENT RETAILERS	000047
-\$1,036.50	-1,499.82	60303	SUPER UNLEADED GASOLINE	23	OTHER RETAILERS	000047
				47	OTHER CONSUMERS	000047

CHEVMDL1358_NJDEF-UTX 000000000088

-5531,747.79	-819,336.84 60303	SUPER UNLEADED GASOLINE	31	DISTRIBUTORS	000047
-124,744.24	-163,597.56 60303	SUPER UNLEADED GASOLINE	21	INVESTMENT RETAILERS	000047
-1,924,070.87	-2,468,655.42 60303	SUPER UNLEADED GASOLINE	21	INVESTMENT RETAILERS	000047
-55,871.49	-9,100.98 60303	SUPER UNLEADED GASOLINE	33	CONSUMER JOBBERS	000047
-119,787.39	-158,219.86 60303	SUPER UNLEADED GASOLINE	21	INVESTMENT RETAILERS	000047
-616,768.52	-793,983.54 60303	SUPER UNLEADED GASOLINE	23	OTHER RETAILERS	000047
-564,124.97	-847,507.50 60303	SUPER UNLEADED GASOLINE	31	DISTRIBUTORS	000047
-2,356.75	-4,499.86 60303	SUPER UNLEADED GASOLINE	33	CONSUMER JOBBERS	000047
-2,429.00	-3,499.86 60303	SUPER UNLEADED GASOLINE	37	OTHER WHOLESALERS	000047
-2,026,863.26	-2,615,465.58 60303	SUPER UNLEADED GASOLINE	21	INVESTMENT RETAILERS	000047
-15,514.94	-150,998.82 60303	SUPER UNLEADED GASOLINE	21	INVESTMENT RETAILERS	000047
-1,743,826.53	-2,226,003.78 60303	SUPER UNLEADED GASOLINE	21	INVESTMENT RETAILERS	000047
-6,542.27	-8,998.92 60303	SUPER UNLEADED GASOLINE	37	OTHER WHOLESALERS	000047
-1,131.00	-1,499.82 60303	SUPER UNLEADED GASOLINE	47	OTHER CONSUMERS	000047
-581,798.43	-740,512.92 60303	SUPER UNLEADED GASOLINE	23	OTHER RETAILERS	000047
-552,761.49	-916,608.42 60303	SUPER UNLEADED GASOLINE	31	DISTRIBUTORS	000047
-582,215.11	-785,227.80 60303	SUPER UNLEADED GASOLINE	23	OTHER RETAILERS	000047
-1,118.25	-1,499.82 60303	SUPER UNLEADED GASOLINE	47	OTHER CONSUMERS	000047
-5603,929.55	-881,439.72 60303	SUPER UNLEADED GASOLINE	31	DISTRIBUTORS	000047
-117,169.02	-151,900.56 60303	SUPER UNLEADED GASOLINE	21	INVESTMENT RETAILERS	000047
-1,976,248.69	-2,501,395.26 60303	SUPER UNLEADED GASOLINE	21	INVESTMENT RETAILERS	000047
-8,860.05	-12,843.00 60303	SUPER UNLEADED GASOLINE	37	OTHER WHOLESALERS	000047
-577,635.16	-12,434.84 60311	TEXACO UNLEADED PLUS GASOLINE	21	INVESTMENT RETAILERS	000047
-1,485.00	-2,199.96 60311	TEXACO UNLEADED PLUS GASOLINE	21	INVESTMENT RETAILERS	000047
-1,533.02	-2,200.80 60311	TEXACO UNLEADED PLUS GASOLINE	23	OTHER RETAILERS	000047
-5452,489.63	-654,579.66 60311	TEXACO UNLEADED PLUS GASOLINE	21	INVESTMENT RETAILERS	000047
-16,789.25	-24,871.98 60311	TEXACO UNLEADED PLUS GASOLINE	21	INVESTMENT RETAILERS	000047
-129,755.46	-188,486.34 60311	TEXACO UNLEADED PLUS GASOLINE	23	OTHER RETAILERS	000047
-102,360.70	-164,501.82 60311	TEXACO UNLEADED PLUS GASOLINE	31	DISTRIBUTORS	000047
-336.25	-499.80 60311	TEXACO UNLEADED PLUS GASOLINE	47	OTHER CONSUMERS	000047
-4,631.30	-6,998.46 60311	TEXACO UNLEADED PLUS GASOLINE	47	OTHER CONSUMERS	000047
-595,225.01	-160,279.98 60311	TEXACO UNLEADED PLUS GASOLINE	31	DISTRIBUTORS	000047
-9912.00	-1,499.82 60311	TEXACO UNLEADED PLUS GASOLINE	23	OTHER RETAILERS	000047
-130,092.80	-187,453.98 60311	TEXACO UNLEADED PLUS GASOLINE	21	INVESTMENT RETAILERS	000047
-16,482.82	-24,198.30 60311	TEXACO UNLEADED PLUS GASOLINE	21	INVESTMENT RETAILERS	000047
-569,215.71	-816,592.14 60311	TEXACO UNLEADED PLUS GASOLINE	21	INVESTMENT RETAILERS	000047
-15,293.68	-22,899.66 60400	REGULAR GASOLINE	21	INVESTMENT RETAILERS	000203
-8,335.08	-12,498.78 60400	REGULAR GASOLINE	47	OTHER CONSUMERS	000203
-227,318.15	-330,327.48 60400	REGULAR GASOLINE	23	OTHER RETAILERS	000203
-313,289.35	-459,094.44 60400	REGULAR GASOLINE	21	INVESTMENT RETAILERS	000203
-108,496.71	-176,875.86 60400	REGULAR GASOLINE	31	DISTRIBUTORS	000203
-18,804.11	-27,993.84 60400	REGULAR GASOLINE	21	INVESTMENT RETAILERS	000203
-218,177.98	-313,212.48 60400	REGULAR GASOLINE	23	OTHER RETAILERS	000203
-4,480.89	-6,991.74 60400	REGULAR GASOLINE	47	OTHER CONSUMERS	000203
-337,030.64	-489,284.30 60400	REGULAR GASOLINE	21	INVESTMENT RETAILERS	000203
-96,650.18	-163,679.88 60400	REGULAR GASOLINE	31	DISTRIBUTORS	000203
-5542.95	-998.76 60400	REGULAR GASOLINE	33	CONSUMER JOBBERS	000203
-14,573.38	-21,444.44 60400	REGULAR GASOLINE	28	OTHER RETAILERS	000203
-10,889.61	-16,747.08 60400	REGULAR GASOLINE	21	INVESTMENT RETAILERS	000203
-320,499.65	-479,984.82 60400	REGULAR GASOLINE	21	INVESTMENT RETAILERS	000203
-74,857.76	-136,941.84 60400	REGULAR GASOLINE	31	DISTRIBUTORS	000203
-596.00	-999.60 60400	REGULAR GASOLINE	47	OTHER CONSUMERS	000203
-576,912.25	-137,484.06 60400	REGULAR GASOLINE	31	DISTRIBUTORS	000203
-518.27	-898.80 60400	REGULAR GASOLINE	33	CONSUMER JOBBERS	000203

[illegible]

-\$313,146.73	-475,091.40	60400	REGULAR GASOLINE	21	INVESTMENT RETAILERS	000203
-\$11,937.99	-18,499.32	60400	REGULAR GASOLINE	21	INVESTMENT RETAILERS	000203
-\$7,891.77	-12,502.56	60400	REGULAR GASOLINE	47	OTHER CONSUMERS	000203
-\$119,691.16	-180,095.58	60400	REGULAR GASOLINE	23	OTHER RETAILERS	000203
-\$883.17	-1,295.70	60400	REGULAR GASOLINE	21	INVESTMENT RETAILERS	000203
-\$5,201.65	-7,749.42	60400	REGULAR GASOLINE	23	OTHER RETAILERS	000203
-\$323.50	-499.80	60400	REGULAR GASOLINE	47	OTHER CONSUMERS	000203
\$201.50	302.82	60400	REGULAR GASOLINE	21	INVESTMENT RETAILERS	000203
\$330.06	-54.60	60200	SUPER GASOLINE	31	DISTRIBUTORS	000116
\$1,995.55	-659.40	60200	SUPER GASOLINE	31	DISTRIBUTORS	000116
\$2,138.14	-502.32	60200	SUPER GASOLINE	31	DISTRIBUTORS	000116
\$2,032.61	-7,734.30	60200	SUPER GASOLINE	31	DISTRIBUTORS	000116
\$2,031.41	-219.66	60200	SUPER GASOLINE	31	DISTRIBUTORS	000116
\$1,980.80	-12,993.12	60200	SUPER GASOLINE	31	DISTRIBUTORS	000116
-\$46,218.47	-81,255.80	60300	UNLEADED GASOLINE	31	DISTRIBUTORS	000116
-\$1,534,900.93	-2,698,304.24	60300	UNLEADED GASOLINE	31	OTHER WHOLESALERS	000116
-\$439,466.21	-785,229.90	60300	UNLEADED GASOLINE	37	DISTRIBUTORS	000116
-\$66,260.54	-118,698.72	60300	UNLEADED GASOLINE	31	DISTRIBUTORS	000116
-\$991,125.00	-1,773,911.53	60300	UNLEADED GASOLINE	31	DISTRIBUTORS	000116
-\$60,028.50	-117,780.86	60300	UNLEADED GASOLINE	31	DISTRIBUTORS	000116
-\$975,113.22	-1,657,140.24	60300	UNLEADED GASOLINE	31	DISTRIBUTORS	000116
-\$204,598.80	-500,110.69	60300	UNLEADED GASOLINE	37	OTHER WHOLESALERS	000116
-\$54,257.98	-105,631.68	60300	UNLEADED GASOLINE	31	DISTRIBUTORS	000116
-\$1,385,911.20	-2,564,297.40	60300	UNLEADED GASOLINE	31	DISTRIBUTORS	000116
-\$1,373,662.68	-2,423,155.98	60300	UNLEADED GASOLINE	31	DISTRIBUTORS	000116
-\$75,186.90	-135,831.78	60300	UNLEADED GASOLINE	31	DISTRIBUTORS	000116
-\$32,362.17	-82,614.86	60300	UNLEADED GASOLINE	31	DISTRIBUTORS	000116
-\$1,304,060.53	-2,388,478.68	60300	SUPER UNLEADED GASOLINE	31	DISTRIBUTORS	000116
-\$1,335,211.79	-1,960,673.40	60303	SUPER UNLEADED GASOLINE	37	OTHER WHOLESALERS	000116
-\$989,192.51	-594,864.90	60303	SUPER UNLEADED GASOLINE	31	DISTRIBUTORS	000116
-\$867,775.65	-1,293,722.22	60303	SUPER UNLEADED GASOLINE	31	DISTRIBUTORS	000116
-\$785,377.20	-1,219,530.48	60303	SUPER UNLEADED GASOLINE	37	OTHER WHOLESALERS	000116
-\$238,075.18	-388,645.76	60303	SUPER UNLEADED GASOLINE	31	DISTRIBUTORS	000116
-\$1,111,009.43	-1,693,949.46	60303	SUPER UNLEADED GASOLINE	31	DISTRIBUTORS	000116
-\$1,181,073.06	-1,700,908.86	60303	SUPER UNLEADED GASOLINE	31	DISTRIBUTORS	000116
-\$1,185,258.07	-1,729,914.90	60303	SUPER UNLEADED GASOLINE	31	DISTRIBUTORS	000047
-\$104,653.46	-189,954.76	60311	TEXACO UNLEADED PLUS GASOLINE	31	DISTRIBUTORS	000047
-\$553,404.37	-898,285.08	60311	TEXACO UNLEADED PLUS GASOLINE	31	DISTRIBUTORS	000047
-\$209,249.50	-345,592.38	60311	TEXACO UNLEADED PLUS GASOLINE	31	DISTRIBUTORS	000047
-\$399,897.34	-593,855.72	60311	TEXACO UNLEADED PLUS GASOLINE	37	OTHER WHOLESALERS	000047
-\$131,143.87	-217,089.18	60311	TEXACO UNLEADED PLUS GASOLINE	31	DISTRIBUTORS	000047
-\$137,280.95	-236,699.82	60311	TEXACO UNLEADED PLUS GASOLINE	31	OTHER WHOLESALERS	000047
-\$79,905.29	-139,094.76	60311	TEXACO UNLEADED PLUS GASOLINE	37	DISTRIBUTORS	000047
-\$230,574.06	-400,609.44	60311	TEXACO UNLEADED PLUS GASOLINE	31	DISTRIBUTORS	000047
-\$71,679.68	-123,837.42	60311	TEXACO UNLEADED PLUS GASOLINE	31	DISTRIBUTORS	000047
-\$390,580.67	-659,053.92	60311	TEXACO UNLEADED PLUS GASOLINE	31	DISTRIBUTORS	000047
-\$157,710.75	-258,552.84	60311	TEXACO UNLEADED PLUS GASOLINE	31	DISTRIBUTORS	000047
-\$349,887.99	-573,268.50	60311	TEXACO UNLEADED PLUS GASOLINE	31	DISTRIBUTORS	000047
-\$181,572.47	-308,668.08	60311	TEXACO UNLEADED PLUS GASOLINE	31	DISTRIBUTORS	000047
-\$361,841.71	-614,962.32	60311	TEXACO UNLEADED PLUS GASOLINE	31	DISTRIBUTORS	000047
\$129.95	-1,098.72	60400	REGULAR GASOLINE	31	DISTRIBUTORS	000116
\$322.09	-1,979.46	60400	REGULAR GASOLINE	31	DISTRIBUTORS	000116
\$890.36	-51.74	60500	OTHER REGULAR GASOLINE	31	DISTRIBUTORS	000116
\$2,488.34	-230.16	60500	OTHER REGULAR GASOLINE	31	DISTRIBUTORS	000116

[illegible][illegible]

-\$1,251,862.84	-1,448,706.84	60300	UNLEADED GASOLINE	47	OTHER CONSUMERS	000043
-\$892,079.18	-1,055,714.94	60300	UNLEADED GASOLINE	47	OTHER CONSUMERS	000118
-\$2,592,930.44	-3,092,855.22	60300	UNLEADED GASOLINE	37	OTHER WHOLESALERS	000118
-\$454,488.72	-541,057.86	60300	UNLEADED GASOLINE	37	OTHER WHOLESALERS	000118
-\$553,302.65	-982,409.82	60300	UNLEADED GASOLINE	37	OTHER WHOLESALERS	000118
\$1,113,789.03	-2,101,450.68	60300	UNLEADED GASOLINE	37	OTHER WHOLESALERS	000118
-\$572,842.48	-1,683,410.84	60300	UNLEADED GASOLINE	37	OTHER WHOLESALERS	000118
-\$983,104.75	-2,071,192.62	60300	UNLEADED GASOLINE	37	OTHER WHOLESALERS	000118
\$1,754,623.64	-3,147,318.72	60300	UNLEADED GASOLINE	37	OTHER WHOLESALERS	000118
-\$218,190.00	-420,000.00	60300	UNLEADED GASOLINE	37	OTHER WHOLESALERS	000118
-\$915,331.47	-1,761,946.62	60300	UNLEADED GASOLINE	37	OTHER WHOLESALERS	000047
-\$494,080.79	-615,676.74	60303	SUPER UNLEADED GASOLINE	47	OTHER CONSUMERS	000005
-\$494,080.79	-615,676.74	60303	SUPER UNLEADED GASOLINE	47	OTHER CONSUMERS	000005
-\$1,165,419.39	-1,452,235.68	60303	SUPER UNLEADED GASOLINE	47	OTHER CONSUMERS	000118
-\$793,582.65	-1,007,723.64	60303	SUPER UNLEADED GASOLINE	47	OTHER CONSUMERS	000118
-\$285,447.01	-482,173.86	60303	SUPER UNLEADED GASOLINE	37	OTHER WHOLESALERS	000047
-\$72,228.96	-122,004.96	60303	SUPER UNLEADED GASOLINE	37	OTHER WHOLESALERS	000047
-\$789,282.04	-1,640,919.00	60303	SUPER UNLEADED GASOLINE	37	OTHER WHOLESALERS	000047
-\$1,258,045.63	-2,506,066.92	60303	SUPER UNLEADED GASOLINE	37	OTHER WHOLESALERS	000047
-\$352,404.91	-482,873.78	60400	REGULAR GASOLINE	47	OTHER CONSUMERS	000118
-\$2,642,669.95	-4,262,764.80	60400	REGULAR GASOLINE	37	OTHER WHOLESALERS	000118
-\$96,022.17	-4,918.20	60400	REGULAR GASOLINE	37	OTHER WHOLESALERS	000118
-\$753,702.69	-1,620,855.68	60400	REGULAR GASOLINE	37	OTHER WHOLESALERS	000118
\$753,702.69	1,620,855.68	60400	REGULAR GASOLINE	37	OTHER WHOLESALERS	000118
-\$753,702.69	-1,620,855.68	60400	REGULAR GASOLINE	37	OTHER WHOLESALERS	000118
-\$902,466.60	-1,655,901.66	60400	REGULAR GASOLINE	37	OTHER WHOLESALERS	000118
-\$1,318,199.40	-3,138,589.70	60400	REGULAR GASOLINE	37	OTHER WHOLESALERS	000118
-\$2,012,648.80	-5,031,621.84	60400	REGULAR GASOLINE	37	OTHER WHOLESALERS	000118
\$13,182.85	-54.60	60400	REGULAR GASOLINE	37	OTHER WHOLESALERS	000118
-\$5.03	164.64	60500	OTHER REGULAR GASOLINE	37	OTHER WHOLESALERS	000118
-\$1,351,372.27	-2,549,758.68	60300	UNLEADED GASOLINE	37	OTHER WHOLESALERS	000111
-\$474,505.08	-839,832.00	60400	UNLEADED GASOLINE	37	OTHER WHOLESALERS	000111
-\$907,728.56	-1,055,495.70	60300	UNLEADED GASOLINE	37	OTHER WHOLESALERS	000118
-\$1,041,327.00	-1,239,674.94	60300	UNLEADED GASOLINE	37	OTHER WHOLESALERS	000118
-\$327,676.74	-618,257.64	60300	UNLEADED GASOLINE	37	OTHER WHOLESALERS	000118
-\$400,343.15	-721,338.66	60300	UNLEADED GASOLINE	37	OTHER WHOLESALERS	000118
-\$115,763.01	-208,581.66	60300	UNLEADED GASOLINE	37	OTHER WHOLESALERS	000118
-\$89,460.13	-125,787.90	60300	UNLEADED GASOLINE	37	OTHER WHOLESALERS	000118
-\$259,560.00	-504,000.00	60300	UNLEADED GASOLINE	37	OTHER WHOLESALERS	000047
-\$284,525.00	-630,000.00	60300	UNLEADED GASOLINE	37	OTHER WHOLESALERS	000047
-\$115,500.00	-210,000.00	60300	UNLEADED GASOLINE	37	OTHER WHOLESALERS	000047
-\$161,575.74	-272,931.96	60303	SUPER UNLEADED GASOLINE	37	OTHER WHOLESALERS	000047
\$1,198,487.39	-2,565,071.88	60303	SUPER UNLEADED GASOLINE	37	OTHER WHOLESALERS	000047
-\$1,468,352.42	-2,497,197.78	60303	SUPER UNLEADED GASOLINE	37	OTHER WHOLESALERS	000047
-\$208,320.00	-336,000.00	60303	SUPER UNLEADED GASOLINE	37	OTHER WHOLESALERS	000047
-\$582,936.53	-1,043,908.74	60303	SUPER UNLEADED GASOLINE	37	OTHER WHOLESALERS	000047
-\$245,480.00	-420,000.00	60303	SUPER UNLEADED GASOLINE	37	OTHER WHOLESALERS	000047
-\$525,000.00	-840,000.00	60303	SUPER UNLEADED GASOLINE	37	OTHER WHOLESALERS	000047
-\$268,359.00	-546,000.00	60400	REGULAR GASOLINE	37	OTHER WHOLESALERS	000118
-\$1,430,100.00	-2,520,000.00	60400	REGULAR GASOLINE	37	OTHER WHOLESALERS	000118
-\$113,925.00	-210,000.00	60400	REGULAR GASOLINE	37	OTHER WHOLESALERS	000203
-\$2,677,298.21	-3,175,284.00	60300	UNLEADED GASOLINE	37	OTHER WHOLESALERS	000047
-\$5,432,102.77	-6,666,282.00	60300	UNLEADED GASOLINE	37	OTHER WHOLESALERS	000047
-\$2,235,003.64	-2,702,154.00	60300	UNLEADED GASOLINE	37	OTHER WHOLESALERS	000047

EAGLE POINT-COASTAL P.A.

72031
72031
72031

72031
72031
72031

72031
72031
72031

72031
72031
72031

DELEWARE-REFG
MONTREAL REFINERY (DRUMS)
MONTREAL REFINERY (DRUMS)

72031
72031
72031

DELEWARE-REFG
DELEWARE-REFG
DELEWARE-REFG

72031
72031
72031

72031
72031
72031

72031
72031
72031

72031
72031
72031

72031
72031
72031

72031
72031
72031

72031
72031
72031

72031
72031
72031

72031
72031
72031

72031
72031
72031

72031
72031
72031

72031
72031
72031

72031
72031
72031

72031
72031
72031

-\$4,473,828.24	-5,399,016.00	60300	UNLEADED GASOLINE	37	OTHER WHOLESALERS	000047
-\$3,283,422.03	-4,238,178.00	60300	UNLEADED GASOLINE	37	OTHER WHOLESALERS	000047
-\$3,302,926.94	-4,272,450.00	60300	UNLEADED GASOLINE	37	OTHER WHOLESALERS	000047
-\$4,148,546.93	-5,269,950.00	60300	UNLEADED GASOLINE	37	OTHER WHOLESALERS	000047
-\$4,408,267.15	-5,443,788.00	60300	UNLEADED GASOLINE	37	OTHER WHOLESALERS	000047
-\$3,921,209.78	-5,487,552.00	60300	UNLEADED GASOLINE	37	OTHER WHOLESALERS	000047
-\$1,632,998.14	-2,518,572.00	60300	UNLEADED GASOLINE	37	OTHER WHOLESALERS	000047
-\$1,327,164.20	-3,204,788.00	60300	UNLEADED GASOLINE	37	OTHER WHOLESALERS	000047
-\$1,439,945.64	-3,561,788.00	60300	UNLEADED GASOLINE	37	OTHER WHOLESALERS	000047
-\$1,439,945.64	-3,561,788.00	60300	UNLEADED GASOLINE	37	OTHER WHOLESALERS	000047
-\$1,669,759.36	-4,089,414.00	60300	UNLEADED GASOLINE	37	OTHER WHOLESALERS	000047
-\$692,700.64	-1,067,304.00	60300	UNLEADED GASOLINE	37	OTHER WHOLESALERS	000047
-\$850,495.07	-2,101,176.00	60300	UNLEADED GASOLINE	37	OTHER WHOLESALERS	000047
-\$433,540.49	-1,239,378.00	60300	UNLEADED GASOLINE	37	OTHER WHOLESALERS	000047
-\$1,544,282.46	-3,731,574.00	60300	UNLEADED GASOLINE	37	OTHER WHOLESALERS	000047
-\$1,279,331.46	-3,115,182.00	60300	UNLEADED GASOLINE	37	OTHER WHOLESALERS	000047
-\$1,706,543.59	-4,182,696.00	60300	UNLEADED GASOLINE	37	OTHER WHOLESALERS	000047
-\$1,996,403.96	-4,627,308.00	60300	UNLEADED GASOLINE	37	OTHER WHOLESALERS	000047
-\$1,657,806.99	-3,357,690.00	60300	UNLEADED GASOLINE	37	OTHER WHOLESALERS	000047
-\$1,657,806.99	3,357,690.00	60300	UNLEADED GASOLINE	37	OTHER WHOLESALERS	000047
-\$1,657,806.99	-3,357,690.00	60300	UNLEADED GASOLINE	37	OTHER WHOLESALERS	000047
-\$378,751.17	-841,302.00	60300	UNLEADED GASOLINE	37	OTHER WHOLESALERS	000047
-\$2,589,189.34	-5,053,104.00	60300	UNLEADED GASOLINE	37	OTHER WHOLESALERS	000047
-\$1,823,533.64	-3,580,286.00	60300	UNLEADED GASOLINE	37	OTHER WHOLESALERS	000047
-\$2,319,079.14	-4,266,056.00	60300	UNLEADED GASOLINE	37	OTHER WHOLESALERS	000047
-\$2,229,483.31	-4,134,606.00	60300	UNLEADED GASOLINE	37	OTHER WHOLESALERS	000047
-\$1,528,120.13	-2,763,642.00	60300	UNLEADED GASOLINE	37	OTHER WHOLESALERS	000047
-\$1,665,893.69	-3,157,140.00	60300	UNLEADED GASOLINE	37	OTHER WHOLESALERS	000047
-\$2,614,341.87	-4,903,122.00	60300	UNLEADED GASOLINE	37	OTHER WHOLESALERS	000047
-\$2,187,099.18	-4,255,314.00	60300	UNLEADED GASOLINE	37	OTHER WHOLESALERS	000047
-\$2,247,635.78	-4,826,094.00	60300	UNLEADED GASOLINE	37	OTHER WHOLESALERS	000047
-\$2,634,807.33	-5,913,558.00	60300	UNLEADED GASOLINE	37	OTHER WHOLESALERS	000047
-\$1,657,072.63	-2,074,674.00	60303	SUPER UNLEADED GASOLINE	37	OTHER WHOLESALERS	000047
-\$3,114,171.50	-3,575,418.00	60303	SUPER UNLEADED GASOLINE	37	OTHER WHOLESALERS	000047
-\$1,506,509.05	-1,709,652.00	60303	SUPER UNLEADED GASOLINE	37	OTHER WHOLESALERS	000047
-\$1,954,222.22	-2,252,460.00	60303	SUPER UNLEADED GASOLINE	37	OTHER WHOLESALERS	000047
-\$2,058,280.59	-2,527,812.00	60303	SUPER UNLEADED GASOLINE	37	OTHER WHOLESALERS	000047
-\$1,735,160.19	-2,110,626.00	60303	SUPER UNLEADED GASOLINE	37	OTHER WHOLESALERS	000047
-\$1,942,707.26	-2,289,546.00	60303	SUPER UNLEADED GASOLINE	37	OTHER WHOLESALERS	000047
-\$2,148,430.75	-2,499,286.00	60303	SUPER UNLEADED GASOLINE	37	OTHER WHOLESALERS	000047
-\$2,092,100.13	-2,743,692.00	60303	SUPER UNLEADED GASOLINE	37	OTHER WHOLESALERS	000047
-\$1,327,308.27	-1,866,606.00	60303	SUPER UNLEADED GASOLINE	37	OTHER WHOLESALERS	000047
-\$1,081,577.40	-2,139,606.00	60303	SUPER UNLEADED GASOLINE	37	OTHER WHOLESALERS	000047
-\$676,555.86	-1,500,450.00	60303	SUPER UNLEADED GASOLINE	37	OTHER WHOLESALERS	000047
-\$676,555.86	1,500,450.00	60303	SUPER UNLEADED GASOLINE	37	OTHER WHOLESALERS	000047
-\$676,555.86	-1,500,450.00	60303	SUPER UNLEADED GASOLINE	37	OTHER WHOLESALERS	000047
-\$1,204,812.85	-2,321,172.00	60303	SUPER UNLEADED GASOLINE	37	OTHER WHOLESALERS	000047
-\$1,541,963.23	-2,533,902.00	60303	SUPER UNLEADED GASOLINE	37	OTHER WHOLESALERS	000047
-\$889,001.41	-1,878,282.00	60303	SUPER UNLEADED GASOLINE	37	OTHER WHOLESALERS	000047
-\$181,061.27	-414,246.00	60303	SUPER UNLEADED GASOLINE	37	OTHER WHOLESALERS	000047
-\$854,950.86	-1,750,896.00	60303	SUPER UNLEADED GASOLINE	37	OTHER WHOLESALERS	000047
-\$1,026,921.33	-2,107,644.00	60303	SUPER UNLEADED GASOLINE	37	OTHER WHOLESALERS	000047
-\$1,020,426.44	-2,130,282.00	60303	SUPER UNLEADED GASOLINE	37	OTHER WHOLESALERS	000047

-\$1,165,822.88	-2,340,282.00	60303	SUPER UNLEADED GASOLINE	37	OTHER WHOLESALERS	000047
\$699,062.70	1,267,098.00	60303	SUPER UNLEADED GASOLINE	37	OTHER WHOLESALERS	000047
-\$699,062.70	-1,267,098.00	60303	SUPER UNLEADED GASOLINE	37	OTHER WHOLESALERS	000047
-\$699,062.70	-1,267,098.00	60303	SUPER UNLEADED GASOLINE	37	OTHER WHOLESALERS	000047
-\$223,303.12	-433,608.00	60303	SUPER UNLEADED GASOLINE	37	OTHER WHOLESALERS	000047
-\$1,684,006.17	-2,917,572.00	60303	SUPER UNLEADED GASOLINE	37	OTHER WHOLESALERS	000047
-\$1,695,590.41	-2,954,238.00	60303	SUPER UNLEADED GASOLINE	37	OTHER WHOLESALERS	000047
-\$765,850.48	-1,248,660.00	60303	SUPER UNLEADED GASOLINE	37	OTHER WHOLESALERS	000047
-\$1,260,066.04	-2,070,852.00	60303	SUPER UNLEADED GASOLINE	37	OTHER WHOLESALERS	000047
-\$1,121,821.79	-1,877,526.00	60303	SUPER UNLEADED GASOLINE	37	OTHER WHOLESALERS	000047
-\$1,183,360.20	-2,065,518.00	60303	SUPER UNLEADED GASOLINE	37	OTHER WHOLESALERS	000047
-\$1,377,496.63	-2,314,998.00	60303	SUPER UNLEADED GASOLINE	37	OTHER WHOLESALERS	000047
-\$1,332,150.02	-2,301,096.00	60303	SUPER UNLEADED GASOLINE	37	OTHER WHOLESALERS	000047
-\$1,533,773.43	-2,956,842.00	60303	SUPER UNLEADED GASOLINE	37	OTHER WHOLESALERS	000047
-\$1,172,061.07	-2,540,216.70	60303	SUPER UNLEADED GASOLINE	37	OTHER WHOLESALERS	000047
-\$95,738.16	-195,384.00	60303	SUPER UNLEADED GASOLINE	37	OTHER WHOLESALERS	000047
-\$22,236,618.05	-26,717,901.84	60300	UNLEADED GASOLINE	37	OTHER WHOLESALERS	000118
-\$6,161,907.71	-7,774,383.96	60300	UNLEADED GASOLINE	37	OTHER WHOLESALERS	000118
-\$11,169,353.89	-13,700,277.78	60300	UNLEADED GASOLINE	37	OTHER WHOLESALERS	000118
-\$857,095.13	-992,362.98	60300	UNLEADED GASOLINE	37	OTHER WHOLESALERS	000118
-\$1,769,947.69	-2,370,367.86	60300	UNLEADED GASOLINE	37	OTHER WHOLESALERS	000118
-\$2,161,598.12	-2,817,708.60	60300	UNLEADED GASOLINE	37	OTHER WHOLESALERS	000118
-\$2,172,062.76	-2,681,308.98	60300	UNLEADED GASOLINE	37	OTHER WHOLESALERS	000118
-\$2,420,526.45	-3,000,577.86	60300	UNLEADED GASOLINE	37	OTHER WHOLESALERS	000118
-\$1,604,598.14	-2,106,755.70	60300	UNLEADED GASOLINE	37	OTHER WHOLESALERS	000118
-\$669,036.00	-1,115,059.68	60300	UNLEADED GASOLINE	37	OTHER WHOLESALERS	000118
-\$846,072.17	-1,839,821.76	60300	UNLEADED GASOLINE	37	OTHER WHOLESALERS	000118
-\$399,478.62	-966,703.92	60300	UNLEADED GASOLINE	37	OTHER WHOLESALERS	000118
-\$399,478.62	966,703.92	60300	UNLEADED GASOLINE	37	OTHER WHOLESALERS	000118
-\$47,399.40	-105,331.80	60300	UNLEADED GASOLINE	37	OTHER WHOLESALERS	000118
-\$191,998.83	-333,910.92	60300	UNLEADED GASOLINE	37	OTHER WHOLESALERS	000118
-\$183,594.61	-445,119.78	60300	UNLEADED GASOLINE	37	OTHER WHOLESALERS	000118
-\$678,681.21	-1,347,689.70	60300	UNLEADED GASOLINE	37	OTHER WHOLESALERS	000118
-\$106,821.41	-314,653.92	60300	UNLEADED GASOLINE	37	OTHER WHOLESALERS	000118
-\$688,293.08	-1,760,509.80	60300	UNLEADED GASOLINE	37	OTHER WHOLESALERS	000118
-\$678,681.21	1,347,689.70	60300	UNLEADED GASOLINE	37	OTHER WHOLESALERS	000118
-\$678,681.21	-1,347,689.70	60300	UNLEADED GASOLINE	37	OTHER WHOLESALERS	000118
-\$453,522.46	-943,746.72	60300	UNLEADED GASOLINE	37	OTHER WHOLESALERS	000118
-\$12,106.28	-215,588.94	60300	UNLEADED GASOLINE	37	OTHER WHOLESALERS	000118
-\$149,372.55	-293,240.64	60300	UNLEADED GASOLINE	37	OTHER WHOLESALERS	000118
-\$254,149.01	-462,898.80	60300	UNLEADED GASOLINE	37	OTHER WHOLESALERS	000118
-\$209,761.67	-380,608.62	60300	UNLEADED GASOLINE	37	OTHER WHOLESALERS	000118
-\$448,455.25	-815,374.98	60300	UNLEADED GASOLINE	37	OTHER WHOLESALERS	000118
-\$606,305.77	-1,171,871.82	60300	UNLEADED GASOLINE	37	OTHER WHOLESALERS	000118
-\$397,175.38	-845,053.86	60300	UNLEADED GASOLINE	37	OTHER WHOLESALERS	000118
-\$13,364,101.42	-15,201,882.78	60303	SUPER UNLEADED GASOLINE	37	OTHER WHOLESALERS	000118
-\$8,705,702.86	-10,221,827.70	60303	SUPER UNLEADED GASOLINE	37	OTHER WHOLESALERS	000118
-\$1,347,680.56	-1,562,234.94	60303	SUPER UNLEADED GASOLINE	37	OTHER WHOLESALERS	000118
-\$2,166,467.50	-2,432,612.62	60303	SUPER UNLEADED GASOLINE	37	OTHER WHOLESALERS	000118
-\$1,556,437.03	-1,942,304.70	60303	SUPER UNLEADED GASOLINE	37	OTHER WHOLESALERS	000118
-\$589,436.38	-726,852.84	60303	SUPER UNLEADED GASOLINE	37	OTHER WHOLESALERS	000118
-\$925,256.50	-1,099,096.74	60303	SUPER UNLEADED GASOLINE	37	OTHER WHOLESALERS	000118
-\$301,994.07	-984,335.94	60303	SUPER UNLEADED GASOLINE	37	OTHER WHOLESALERS	000118

[illegible]

CHEVMDL1358_NJDEP-UTX 00000000104

-\$595,044.25	-898,179.66	60303	SUPER UNLEADED GASOLINE	37	OTHER WHOLESALERS	000047
-\$1,552,552.38	-3,273,108.72	60303	SUPER UNLEADED GASOLINE	37	OTHER WHOLESALERS	000047
-\$181,820.25	-384,114.78	60303	SUPER UNLEADED GASOLINE	37	OTHER WHOLESALERS	000047
-\$181,820.25	384,114.78	60303	SUPER UNLEADED GASOLINE	37	OTHER WHOLESALERS	000047
-\$249,329.45	-575,274.00	60303	SUPER UNLEADED GASOLINE	37	OTHER WHOLESALERS	000047
-\$1,169,565.11	-1,916,720.82	60303	SUPER UNLEADED GASOLINE	37	OTHER WHOLESALERS	000047
-\$473,940.28	-1,031,233.98	60303	SUPER UNLEADED GASOLINE	37	OTHER WHOLESALERS	000047
-\$123,060.44	-280,626.78	60303	SUPER UNLEADED GASOLINE	37	OTHER WHOLESALERS	000047
-\$91,024.92	-212,323.86	60303	SUPER UNLEADED GASOLINE	37	OTHER WHOLESALERS	000047
-\$1,563,070.54	-3,414,818.82	60303	SUPER UNLEADED GASOLINE	37	OTHER WHOLESALERS	000047
-\$453,672.69	-853,484.94	60303	SUPER UNLEADED GASOLINE	37	OTHER WHOLESALERS	000047
-\$413,206.76	-746,896.92	60303	SUPER UNLEADED GASOLINE	37	OTHER WHOLESALERS	000047
-\$110,825.99	-190,862.70	60303	SUPER UNLEADED GASOLINE	37	OTHER WHOLESALERS	000047
-\$219,717.50	-356,856.78	60303	SUPER UNLEADED GASOLINE	37	OTHER WHOLESALERS	000047
-\$285,649.14	-480,678.66	60303	SUPER UNLEADED GASOLINE	37	OTHER WHOLESALERS	000047
-\$100,070.36	-173,281.92	60303	SUPER UNLEADED GASOLINE	37	OTHER WHOLESALERS	000047
-\$1,042,518.98	-1,782,888.66	60303	SUPER UNLEADED GASOLINE	37	OTHER WHOLESALERS	000047
\$5,304.29	-13,373.64	60303	SUPER UNLEADED GASOLINE	37	OTHER WHOLESALERS	000047
-\$1,274,890.67	-1,649,920.86	60400	REGULAR GASOLINE	37	OTHER WHOLESALERS	000118
-\$2,016,075.68	-2,600,140.62	60400	REGULAR GASOLINE	37	OTHER WHOLESALERS	000118
-\$2,857,542.05	-3,606,188.88	60400	REGULAR GASOLINE	37	OTHER WHOLESALERS	000118
-\$1,157,770.78	-1,480,459.68	60400	REGULAR GASOLINE	37	OTHER WHOLESALERS	000118
-\$2,243,476.99	-2,929,489.76	60400	REGULAR GASOLINE	37	OTHER WHOLESALERS	000118
-\$1,909,588.39	-2,489,890.82	60400	REGULAR GASOLINE	37	OTHER WHOLESALERS	000118
-\$2,531,260.30	-3,186,921.78	60400	REGULAR GASOLINE	37	OTHER WHOLESALERS	000118
-\$975,289.85	-1,226,626.80	60400	REGULAR GASOLINE	37	OTHER WHOLESALERS	000118
-\$764,525.04	-1,038,291.66	60400	REGULAR GASOLINE	37	OTHER WHOLESALERS	000118
-\$677,641.34	-1,092,182.70	60400	REGULAR GASOLINE	37	OTHER WHOLESALERS	000118
-\$633,147.85	-1,329,615.84	60400	REGULAR GASOLINE	37	OTHER WHOLESALERS	000118
\$671,290.40	-1,644,832.98	60400	REGULAR GASOLINE	37	OTHER WHOLESALERS	000118
-\$671,290.40	-1,644,832.98	60400	REGULAR GASOLINE	37	OTHER WHOLESALERS	000118
-\$732,431.18	-1,664,796.84	60400	REGULAR GASOLINE	37	OTHER WHOLESALERS	000118
-\$114,873.19	-206,053.68	60400	REGULAR GASOLINE	37	OTHER WHOLESALERS	000118
-\$45,227.28	-107,683.80	60400	REGULAR GASOLINE	37	OTHER WHOLESALERS	000118
-\$597,207.87	-1,480,086.80	60400	REGULAR GASOLINE	37	OTHER WHOLESALERS	000118
-\$173,159.16	-440,649.72	60400	REGULAR GASOLINE	37	OTHER WHOLESALERS	000118
-\$378,428.65	-759,503.64	60400	REGULAR GASOLINE	37	OTHER WHOLESALERS	000118
-\$376,428.65	-759,503.64	60400	REGULAR GASOLINE	37	OTHER WHOLESALERS	000118
\$376,428.65	759,503.64	60400	REGULAR GASOLINE	37	OTHER WHOLESALERS	000118
-\$717,284.48	-1,439,725.98	60400	REGULAR GASOLINE	37	OTHER WHOLESALERS	000118
-\$688,735.62	-1,341,112.92	60400	REGULAR GASOLINE	37	OTHER WHOLESALERS	000118
-\$463,769.71	-880,693.72	60400	REGULAR GASOLINE	37	OTHER WHOLESALERS	000118
-\$467,092.92	-842,724.96	60400	REGULAR GASOLINE	37	OTHER WHOLESALERS	000118
-\$337,416.29	-586,418.70	60400	REGULAR GASOLINE	37	OTHER WHOLESALERS	000118
-\$180,520.15	-315,580.86	60400	REGULAR GASOLINE	37	OTHER WHOLESALERS	000118
-\$95,412.67	-167,683.74	60400	REGULAR GASOLINE	37	OTHER WHOLESALERS	000118
-\$389,788.91	-709,527.00	60400	REGULAR GASOLINE	37	OTHER WHOLESALERS	000118
-\$167,462.47	-315,740.88	60400	REGULAR GASOLINE	37	OTHER WHOLESALERS	000118
-\$214,374.11	-429,396.66	60400	REGULAR GASOLINE	37	OTHER WHOLESALERS	000118
-\$78,828.30	-173,249.74	60400	REGULAR GASOLINE	37	OTHER WHOLESALERS	000118
-\$1,915,374.85	-2,282,568.96	60300	UNLEADED GASOLINE	37	OTHER WHOLESALERS	000118
-\$3,451,919.90	-4,280,879.82	60300	UNLEADED GASOLINE	37	OTHER WHOLESALERS	000118

CHEVMDL1358_NJDEP-UTX 00000000107

-\$1,412,111.90	-1,721,925.66	60300	UNLEADED GASOLINE	37	OTHER WHOLESALERS	000118
-\$4,242,479.60	-5,113,601.64	60300	UNLEADED GASOLINE	37	OTHER WHOLESALERS	000118
-\$2,218,358.06	-2,960,719.86	60300	UNLEADED GASOLINE	37	OTHER WHOLESALERS	000118
-\$1,089,887.05	-1,427,996.64	60300	UNLEADED GASOLINE	37	OTHER WHOLESALERS	000118
-\$645,857.02	-1,058,781.78	60300	UNLEADED GASOLINE	37	OTHER WHOLESALERS	000118
-\$367,158.50	-734,316.66	60300	UNLEADED GASOLINE	37	OTHER WHOLESALERS	000118
\$171,449.11	420,733.74	60300	UNLEADED GASOLINE	37	OTHER WHOLESALERS	000118
-\$171,449.11	-420,733.74	60300	UNLEADED GASOLINE	37	OTHER WHOLESALERS	000118
-\$162,091.48	-356,294.84	60300	UNLEADED GASOLINE	37	OTHER WHOLESALERS	000118
-\$338,343.52	-1,552,488.00	60300	UNLEADED GASOLINE	37	OTHER WHOLESALERS	000118
-\$43,833.47	-107,075.64	60300	UNLEADED GASOLINE	37	OTHER WHOLESALERS	000118
\$638,343.52	1,552,488.00	60300	UNLEADED GASOLINE	37	OTHER WHOLESALERS	000118
-\$280,350.00	-630,000.00	60300	UNLEADED GASOLINE	37	OTHER WHOLESALERS	000118
-\$1,038,730.97	-2,543,373.00	60300	UNLEADED GASOLINE	37	OTHER WHOLESALERS	000118
-\$34,950.00	-84,000.00	60300	UNLEADED GASOLINE	37	OTHER WHOLESALERS	000118
-\$604,710.82	-1,245,838.66	60300	UNLEADED GASOLINE	37	OTHER WHOLESALERS	000118
-\$93,936.52	-180,208.98	60300	UNLEADED GASOLINE	37	OTHER WHOLESALERS	000118
-\$54,853.50	-109,716.60	60300	UNLEADED GASOLINE	37	OTHER WHOLESALERS	000118
-\$603,738.88	-1,102,783.92	60300	UNLEADED GASOLINE	37	OTHER WHOLESALERS	000118
-\$644,585.80	-1,163,195.82	60300	UNLEADED GASOLINE	37	OTHER WHOLESALERS	000118
-\$55,576.45	-103,809.72	60300	UNLEADED GASOLINE	37	OTHER WHOLESALERS	000118
-\$189,085.06	-336,152.88	60300	UNLEADED GASOLINE	37	OTHER WHOLESALERS	000118
-\$1,024,308.55	-2,230,970.70	60300	UNLEADED GASOLINE	37	OTHER WHOLESALERS	000118
-\$379,226.72	-847,434.00	60300	UNLEADED GASOLINE	37	OTHER WHOLESALERS	000118
-\$186,331.13	-209,674.92	60303	SUPER UNLEADED GASOLINE	37	OTHER WHOLESALERS	000118
-\$862,105.57	-992,183.64	60303	SUPER UNLEADED GASOLINE	37	OTHER WHOLESALERS	000118
-\$547,547.78	-634,837.98	60303	SUPER UNLEADED GASOLINE	37	OTHER WHOLESALERS	000118
-\$2,451,822.03	-2,833,834.92	60303	SUPER UNLEADED GASOLINE	37	OTHER WHOLESALERS	000118
-\$545,288.55	-679,810.74	60303	SUPER UNLEADED GASOLINE	37	OTHER WHOLESALERS	000118
-\$148,817.71	-231,357.00	60303	SUPER UNLEADED GASOLINE	37	OTHER WHOLESALERS	000118
-\$176,715.14	-637,745.64	60303	SUPER UNLEADED GASOLINE	37	OTHER WHOLESALERS	000118
-\$157,489.74	-257,692.68	60303	SUPER UNLEADED GASOLINE	37	OTHER WHOLESALERS	000118
-\$157,489.74	-342,388.88	60303	SUPER UNLEADED GASOLINE	37	OTHER WHOLESALERS	000118
\$157,489.74	342,388.88	60303	SUPER UNLEADED GASOLINE	37	OTHER WHOLESALERS	000118
-\$32,942.84	-64,911.84	60303	SUPER UNLEADED GASOLINE	37	OTHER WHOLESALERS	000118
-\$1,130,303.57	-1,891,801.80	60303	SUPER UNLEADED GASOLINE	37	OTHER WHOLESALERS	000118
-\$176,762.50	-383,023.62	60303	SUPER UNLEADED GASOLINE	37	OTHER WHOLESALERS	000118
\$749,162.93	1,264,410.00	60303	SUPER UNLEADED GASOLINE	37	OTHER WHOLESALERS	000118
-\$193,733.57	-396,911.80	60303	SUPER UNLEADED GASOLINE	37	OTHER WHOLESALERS	000118
-\$156,905.42	-337,430.94	60303	SUPER UNLEADED GASOLINE	37	OTHER WHOLESALERS	000118
-\$646,027.60	-1,201,224.78	60303	SUPER UNLEADED GASOLINE	37	OTHER WHOLESALERS	000118
-\$780,713.49	-1,330,324.80	60303	SUPER UNLEADED GASOLINE	37	OTHER WHOLESALERS	000118
-\$53,703.50	-103,889.60	60303	SUPER UNLEADED GASOLINE	37	OTHER WHOLESALERS	000118
-\$51,763.92	-84,168.00	60303	SUPER UNLEADED GASOLINE	37	OTHER WHOLESALERS	000118
-\$50,502.08	-83,130.60	60303	SUPER UNLEADED GASOLINE	37	OTHER WHOLESALERS	000118
-\$61,065.01	-103,064.64	60303	SUPER UNLEADED GASOLINE	37	OTHER WHOLESALERS	000118
-\$485,839.78	-841,281.00	60303	SUPER UNLEADED GASOLINE	37	OTHER WHOLESALERS	000118
-\$120,270.15	-205,590.00	60303	SUPER UNLEADED GASOLINE	37	OTHER WHOLESALERS	000118
-\$626,275.14	-1,210,160.70	60303	SUPER UNLEADED GASOLINE	37	OTHER WHOLESALERS	000118
-\$425,429.55	-872,676.00	60303	SUPER UNLEADED GASOLINE	37	OTHER WHOLESALERS	000118
-\$122,006.96	-157,427.76	60400	REGULAR GASOLINE	37	OTHER WHOLESALERS	000118
-\$744,192.84	-959,532.84	60400	REGULAR GASOLINE	37	OTHER WHOLESALERS	000118

[illegible]

-\$485,561.54	-603,303.96	60400	REGULAR GASOLINE	37	OTHER WHOLESALERS	000118
-\$1,239,398.78	-1,591,482.90	60400	REGULAR GASOLINE	37	OTHER WHOLESALERS	000118
-\$238,024.23	-396,801.72	60400	REGULAR GASOLINE	37	OTHER WHOLESALERS	000118
-\$175,049.28	-230,328.00	60400	REGULAR GASOLINE	37	OTHER WHOLESALERS	000118
-\$22,047.75	-53,774.70	60400	REGULAR GASOLINE	37	OTHER WHOLESALERS	000118
-\$94,246.94	-230,139.00	60400	REGULAR GASOLINE	37	OTHER WHOLESALERS	000118
-\$306,455.49	-619,103.94	60400	REGULAR GASOLINE	37	OTHER WHOLESALERS	000118
-\$306,455.49	-619,103.94	60400	REGULAR GASOLINE	37	OTHER WHOLESALERS	000118
\$306,455.49	619,103.94	60400	REGULAR GASOLINE	37	OTHER WHOLESALERS	000118
-\$460,548.85	-935,283.76	60400	REGULAR GASOLINE	37	OTHER WHOLESALERS	000118
-\$46,173.54	-87,047.94	60400	REGULAR GASOLINE	37	OTHER WHOLESALERS	000118
-\$55,905.71	-109,620.94	60400	REGULAR GASOLINE	37	OTHER WHOLESALERS	000118
-\$19,089.69	-207,981.90	60400	REGULAR GASOLINE	37	OTHER WHOLESALERS	000118
-\$155,618.00	-270,639.60	60400	REGULAR GASOLINE	37	OTHER WHOLESALERS	000118
-\$445,160.16	-813,137.64	60400	REGULAR GASOLINE	37	OTHER WHOLESALERS	000118
-\$114,425.76	-212,886.66	60400	REGULAR GASOLINE	37	OTHER WHOLESALERS	000118
-\$7,856,458.85	-9,380,868.00	60300	UNLEADED GASOLINE	37	OTHER WHOLESALERS	000047
-\$7,606,779.40	-9,314,970.00	60300	UNLEADED GASOLINE	37	OTHER WHOLESALERS	000047
-\$10,323,095.63	-12,480,426.00	60300	UNLEADED GASOLINE	37	OTHER WHOLESALERS	000047
-\$10,548,920.34	-12,791,100.00	60300	UNLEADED GASOLINE	37	OTHER WHOLESALERS	000047
-\$9,512,474.79	-12,501,552.00	60300	UNLEADED GASOLINE	37	OTHER WHOLESALERS	000047
-\$7,924,132.34	-10,319,442.00	60300	UNLEADED GASOLINE	37	OTHER WHOLESALERS	000047
-\$10,205,848.88	-12,672,912.00	60300	UNLEADED GASOLINE	37	OTHER WHOLESALERS	000047
-\$13,587,828.16	-16,852,500.00	60300	UNLEADED GASOLINE	37	OTHER WHOLESALERS	000047
-\$11,799,616.12	-16,580,256.00	60300	UNLEADED GASOLINE	37	OTHER WHOLESALERS	000047
-\$9,824,914.47	-14,970,606.00	60300	UNLEADED GASOLINE	37	OTHER WHOLESALERS	000047
-\$6,039,376.27	-12,456,948.00	60300	UNLEADED GASOLINE	37	OTHER WHOLESALERS	000047
-\$3,039,530.02	-13,730,514.00	60300	UNLEADED GASOLINE	37	OTHER WHOLESALERS	000047
-\$5,039,530.02	13,730,514.00	60300	UNLEADED GASOLINE	37	OTHER WHOLESALERS	000047
-\$5,039,530.02	-13,730,514.00	60300	UNLEADED GASOLINE	37	OTHER WHOLESALERS	000047
-\$5,039,530.02	-12,519,628.00	60300	UNLEADED GASOLINE	37	OTHER WHOLESALERS	000047
-\$5,830,292.80	-17,322,438.00	60300	UNLEADED GASOLINE	37	OTHER WHOLESALERS	000047
-\$9,403,371.18	-10,508,778.00	60300	UNLEADED GASOLINE	37	OTHER WHOLESALERS	000047
-\$4,355,282.21	-14,745,670.00	60300	UNLEADED GASOLINE	37	OTHER WHOLESALERS	000047
-\$6,134,931.40	-15,403,416.00	60300	UNLEADED GASOLINE	37	OTHER WHOLESALERS	000047
-\$4,893,781.56	-12,035,730.00	60300	UNLEADED GASOLINE	37	OTHER WHOLESALERS	000047
-\$4,892,279.40	-11,180,610.00	60300	UNLEADED GASOLINE	37	OTHER WHOLESALERS	000047
-\$4,572,368.02	-11,376,498.00	60300	UNLEADED GASOLINE	37	OTHER WHOLESALERS	000047
-\$4,980,062.87	-7,947,156.00	60300	UNLEADED GASOLINE	37	OTHER WHOLESALERS	000047
-\$3,896,395.98	7,947,156.00	60300	UNLEADED GASOLINE	37	OTHER WHOLESALERS	000047
-\$3,896,395.98	-7,947,156.00	60300	UNLEADED GASOLINE	37	OTHER WHOLESALERS	000047
-\$3,896,395.98	-52,794.00	60300	UNLEADED GASOLINE	37	OTHER WHOLESALERS	000047
-\$23,757.30	-9,732,492.00	60300	UNLEADED GASOLINE	37	OTHER WHOLESALERS	000047
-\$4,975,190.77	-15,730,134.00	60300	UNLEADED GASOLINE	37	OTHER WHOLESALERS	000047
-\$7,977,570.11	-15,564,760.00	60300	UNLEADED GASOLINE	37	OTHER WHOLESALERS	000047
-\$8,414,445.09	-15,659,692.00	60300	UNLEADED GASOLINE	37	OTHER WHOLESALERS	000047
-\$9,699,272.69	-12,183,864.00	60300	UNLEADED GASOLINE	37	OTHER WHOLESALERS	000047
-\$6,785,812.65	-13,002,528.00	60300	UNLEADED GASOLINE	37	OTHER WHOLESALERS	000047
-\$6,846,369.31	-15,103,494.00	60300	UNLEADED GASOLINE	37	OTHER WHOLESALERS	000047
-\$6,087,737.36	-13,273,218.00	60300	UNLEADED GASOLINE	37	OTHER WHOLESALERS	000047
-\$6,796,140.76	-11,783,184.00	60300	UNLEADED GASOLINE	37	OTHER WHOLESALERS	000047
-\$5,439,283.93	-11,510,362.00	60300	UNLEADED GASOLINE	37	OTHER WHOLESALERS	000047
-\$5,123,713.49	-6,718,950.00	60300	SUPER UNLEADED GASOLINE	37	OTHER WHOLESALERS	000047
-\$5,976,968.08	-4,974,984.00	60303	SUPER UNLEADED GASOLINE	37	OTHER WHOLESALERS	000047
-\$4,311,340.54				37		

-\$5,204,400.20	-5,957,742.00	60303	SUPER UNLEADED GASOLINE	37	OTHER WHOLESALERS	000047
-\$5,889,818.04	-6,855,744.00	60303	SUPER UNLEADED GASOLINE	37	OTHER WHOLESALERS	000047
-\$6,096,639.18	-7,591,962.00	60303	SUPER UNLEADED GASOLINE	37	OTHER WHOLESALERS	000047
-\$5,669,286.66	-6,844,236.00	60303	SUPER UNLEADED GASOLINE	37	OTHER WHOLESALERS	000047
-\$7,569,725.82	-8,795,346.00	60303	SUPER UNLEADED GASOLINE	37	OTHER WHOLESALERS	000047
-\$7,324,789.19	-8,532,006.00	60303	SUPER UNLEADED GASOLINE	37	OTHER WHOLESALERS	000047
-\$6,184,447.30	-8,146,294.00	60303	SUPER UNLEADED GASOLINE	37	OTHER WHOLESALERS	000047
-\$5,295,776.46	-7,502,250.00	60303	SUPER UNLEADED GASOLINE	37	OTHER WHOLESALERS	000047
-\$2,751,283.97	-5,871,642.00	60303	SUPER UNLEADED GASOLINE	37	OTHER WHOLESALERS	000047
-\$4,972,710.16	-10,459,218.00	60303	SUPER UNLEADED GASOLINE	37	OTHER WHOLESALERS	000047
-\$4,972,710.16	-10,459,218.00	60303	SUPER UNLEADED GASOLINE	37	OTHER WHOLESALERS	000047
\$4,972,710.16	10,459,218.00	60303	SUPER UNLEADED GASOLINE	37	OTHER WHOLESALERS	000047
-\$4,598,971.56	-8,891,358.00	60303	SUPER UNLEADED GASOLINE	37	OTHER WHOLESALERS	000047
-\$6,951,738.39	-11,668,188.00	60303	SUPER UNLEADED GASOLINE	37	OTHER WHOLESALERS	000047
-\$2,731,994.09	-5,884,284.00	60303	SUPER UNLEADED GASOLINE	37	OTHER WHOLESALERS	000047
-\$4,400,338.96	-10,965,612.00	60303	SUPER UNLEADED GASOLINE	37	OTHER WHOLESALERS	000047
-\$5,392,039.28	-11,026,428.00	60303	SUPER UNLEADED GASOLINE	37	OTHER WHOLESALERS	000047
-\$4,409,330.94	-9,148,272.00	60303	SUPER UNLEADED GASOLINE	37	OTHER WHOLESALERS	000047
-\$4,324,804.79	-8,854,230.00	60303	SUPER UNLEADED GASOLINE	37	OTHER WHOLESALERS	000047
-\$3,685,197.19	-7,104,782.00	60303	SUPER UNLEADED GASOLINE	37	OTHER WHOLESALERS	000047
-\$3,346,967.76	-6,088,950.00	60303	SUPER UNLEADED GASOLINE	37	OTHER WHOLESALERS	000047
-\$3,346,967.76	6,088,950.00	60303	SUPER UNLEADED GASOLINE	37	OTHER WHOLESALERS	000047
-\$3,346,967.76	-6,088,950.00	60303	SUPER UNLEADED GASOLINE	37	OTHER WHOLESALERS	000047
-\$334,715.23	-1,038,282.00	60303	SUPER UNLEADED GASOLINE	37	OTHER WHOLESALERS	000047
-\$5,533,312.69	-9,501,576.00	60303	SUPER UNLEADED GASOLINE	37	OTHER WHOLESALERS	000047
-\$4,269,801.39	-7,475,286.00	60303	SUPER UNLEADED GASOLINE	37	OTHER WHOLESALERS	000047
-\$7,325,081.46	-12,040,812.00	60303	SUPER UNLEADED GASOLINE	37	OTHER WHOLESALERS	000047
-\$6,994,887.25	-11,526,732.00	60303	SUPER UNLEADED GASOLINE	37	OTHER WHOLESALERS	000047
-\$5,220,263.27	-8,721,342.00	60303	SUPER UNLEADED GASOLINE	37	OTHER WHOLESALERS	000047
-\$6,459,832.48	-11,251,296.00	60303	SUPER UNLEADED GASOLINE	37	OTHER WHOLESALERS	000047
-\$7,447,074.92	-12,444,726.00	60303	SUPER UNLEADED GASOLINE	37	OTHER WHOLESALERS	000047
-\$5,859,370.97	-10,196,298.00	60303	SUPER UNLEADED GASOLINE	37	OTHER WHOLESALERS	000047
-\$4,620,360.58	-8,971,586.00	60303	SUPER UNLEADED GASOLINE	37	OTHER WHOLESALERS	000047
-\$4,593,421.33	-10,386,070.00	60303	SUPER UNLEADED GASOLINE	37	OTHER WHOLESALERS	000047
-\$1,356,057.36	-1,994,202.00	60400	REGULAR GASOLINE	37	OTHER WHOLESALERS	000047
-\$1,356,057.36	-1,994,202.00	60400	REGULAR GASOLINE	37	OTHER WHOLESALERS	000047
-\$1,356,057.36	1,994,202.00	60400	REGULAR GASOLINE	37	OTHER WHOLESALERS	000047
-\$1,843,757.79	-3,762,770.76	60300	UNLEADED GASOLINE	37	OTHER WHOLESALERS	000047
-\$6,143,285.37	-12,602,449.86	60300	UNLEADED GASOLINE	37	OTHER WHOLESALERS	000047
-\$15,054,081.97	-28,853,244.00	60300	UNLEADED GASOLINE	37	OTHER WHOLESALERS	000047
-\$4,660,817.76	-11,931,057.60	60300	UNLEADED GASOLINE	37	OTHER WHOLESALERS	000047
-\$5,268,092.12	-15,988,672.98	60300	UNLEADED GASOLINE	37	OTHER WHOLESALERS	000047
-\$6,348,527.97	-15,807,061.62	60300	UNLEADED GASOLINE	37	OTHER WHOLESALERS	000047
-\$4,266,145.04	-11,073,318.90	60300	UNLEADED GASOLINE	37	OTHER WHOLESALERS	000047
-\$6,641,794.78	-16,679,111.82	60300	UNLEADED GASOLINE	37	OTHER WHOLESALERS	000047
-\$11,653,907.68	-26,680,066.66	60300	UNLEADED GASOLINE	37	OTHER WHOLESALERS	000047
-\$5,775,317.98	11,538,247.99	60300	UNLEADED GASOLINE	37	OTHER WHOLESALERS	000047
-\$5,775,317.98	-11,538,247.98	60300	UNLEADED GASOLINE	37	OTHER WHOLESALERS	000047
-\$5,775,317.98	-11,538,247.98	60300	UNLEADED GASOLINE	37	OTHER WHOLESALERS	000047
-\$9,874,241.82	-21,079,738.68	60300	UNLEADED GASOLINE	37	OTHER WHOLESALERS	000047
-\$6,914,674.67	-13,771,445.94	60300	UNLEADED GASOLINE	37	OTHER WHOLESALERS	000047
\$1,370.39	2,962.68	60300	UNLEADED GASOLINE	37	OTHER WHOLESALERS	000047
-\$4,882,972.91	-9,140,708.64	60300	UNLEADED GASOLINE	37	OTHER WHOLESALERS	000047

[illegible]

-\$4,749,517.65	-8,510,382.98	60300	UNLEADED GASOLINE	37	OTHER WHOLESALERS	000047
-\$3,481,373.66	-6,298,307.82	60300	UNLEADED GASOLINE	37	OTHER WHOLESALERS	000047
-\$3,360,380.08	-8,194,248.62	60300	UNLEADED GASOLINE	37	OTHER WHOLESALERS	000047
-\$8,212,556.08	-15,743,607.60	60300	UNLEADED GASOLINE	37	OTHER WHOLESALERS	000047
-\$10,393,162.61	-20,307,105.00	60300	UNLEADED GASOLINE	37	OTHER WHOLESALERS	000047
-\$6,190,202.01	-13,549,692.66	60300	UNLEADED GASOLINE	37	OTHER WHOLESALERS	000047
-\$10,497,964.78	-23,521,234.80	60300	UNLEADED GASOLINE	37	OTHER WHOLESALERS	000047
-\$2,940,486.10	-6,223,250.88	60303	SUPER UNLEADED GASOLINE	37	OTHER WHOLESALERS	000047
-\$4,322,389.24	-7,374,994.62	60303	SUPER UNLEADED GASOLINE	37	OTHER WHOLESALERS	000047
-\$8,611,619.50	-18,825,310.98	60303	SUPER UNLEADED GASOLINE	37	OTHER WHOLESALERS	000047
-\$4,039,459.00	-9,693,055.68	60303	SUPER UNLEADED GASOLINE	37	OTHER WHOLESALERS	000047
-\$4,153,566.87	-7,411,572.00	60303	SUPER UNLEADED GASOLINE	37	OTHER WHOLESALERS	000047
-\$2,841,384.59	-6,077,827.98	60303	SUPER UNLEADED GASOLINE	37	OTHER WHOLESALERS	000047
-\$2,772,182.88	-6,126,370.74	60303	SUPER UNLEADED GASOLINE	37	OTHER WHOLESALERS	000047
-\$7,693,208.23	-15,857,354.94	60303	SUPER UNLEADED GASOLINE	37	OTHER WHOLESALERS	000047
-\$3,186,705.93	-6,246,442.90	60303	SUPER UNLEADED GASOLINE	37	OTHER WHOLESALERS	000047
-\$2,039,467.67	-3,943,984.80	60303	SUPER UNLEADED GASOLINE	37	OTHER WHOLESALERS	000047
-\$4,627,375.83	-8,012,771.76	60303	SUPER UNLEADED GASOLINE	37	OTHER WHOLESALERS	000047
-\$5,426,058.49	-8,858,871.00	60303	SUPER UNLEADED GASOLINE	37	OTHER WHOLESALERS	000047
-\$4,306,898.04	-7,285,713.96	60303	SUPER UNLEADED GASOLINE	37	OTHER WHOLESALERS	000047
-\$5,696,990.72	-9,389,034.88	60303	SUPER UNLEADED GASOLINE	37	OTHER WHOLESALERS	000047
-\$4,544,094.14	-8,274,399.84	60303	SUPER UNLEADED GASOLINE	37	OTHER WHOLESALERS	000047
-\$5,796,417.73	-9,467,893.60	60303	SUPER UNLEADED GASOLINE	37	OTHER WHOLESALERS	000047
-\$7,183,073.06	-12,484,796.94	60303	SUPER UNLEADED GASOLINE	37	OTHER WHOLESALERS	000047
-\$5,514,293.27	-11,710,281.66	60303	SUPER UNLEADED GASOLINE	37	OTHER WHOLESALERS	000047
-\$6,684,245.82	-14,935,794.72	60303	SUPER UNLEADED GASOLINE	37	OTHER WHOLESALERS	000047
-\$13,392,097.60	-18,163,601.82	60300	UNLEADED GASOLINE	37	OTHER WHOLESALERS	000047
-\$8,036,314.31	-10,534,840.88	60300	UNLEADED GASOLINE	37	OTHER WHOLESALERS	000047
-\$13,139,708.24	-16,571,917.74	60300	UNLEADED GASOLINE	37	OTHER WHOLESALERS	000047
-\$1,659,376.04	-2,100,475.86	60300	UNLEADED GASOLINE	37	OTHER WHOLESALERS	000043
-\$12,835,247.45	-15,722,717.64	60300	UNLEADED GASOLINE	37	OTHER WHOLESALERS	000047
-\$6,164,027.14	-7,575,630.72	60300	UNLEADED GASOLINE	37	OTHER WHOLESALERS	000043
-\$5,321,212.48	-6,735,711.78	60300	UNLEADED GASOLINE	37	OTHER WHOLESALERS	000047
-\$8,848,895.52	-12,862,838.60	60300	UNLEADED GASOLINE	37	OTHER WHOLESALERS	000047
-\$9,012,785.02	-13,741,842.66	60300	UNLEADED GASOLINE	37	OTHER WHOLESALERS	000047
-\$5,578,748.62	-10,691,241.96	60300	UNLEADED GASOLINE	37	OTHER WHOLESALERS	000047
-\$7,839,279.37	-19,744,685.78	60300	UNLEADED GASOLINE	37	OTHER WHOLESALERS	000047
-\$7,839,279.37	-19,744,685.78	60300	UNLEADED GASOLINE	37	OTHER WHOLESALERS	000047
-\$5,487,752.03	-13,642,923.00	60300	UNLEADED GASOLINE	37	OTHER WHOLESALERS	000047
-\$1,398,224.81	-3,312,074.64	60300	UNLEADED GASOLINE	37	OTHER WHOLESALERS	000047
-\$1,199,589.30	-3,773,973.00	60300	UNLEADED GASOLINE	37	OTHER WHOLESALERS	000047
-\$32,132.79	-2,595.86	60300	UNLEADED GASOLINE	37	OTHER WHOLESALERS	000047
-\$4,478,421.09	-11,156,663.70	60300	UNLEADED GASOLINE	37	OTHER WHOLESALERS	000047
-\$2,651,566.73	-6,660,053.82	60300	UNLEADED GASOLINE	37	OTHER WHOLESALERS	000047
-\$4,593,020.39	-11,278,302.00	60300	UNLEADED GASOLINE	37	OTHER WHOLESALERS	000047
-\$3,676,120.41	-7,568,553.80	60300	UNLEADED GASOLINE	37	OTHER WHOLESALERS	000047
-\$3,676,120.41	-7,568,553.80	60300	UNLEADED GASOLINE	37	OTHER WHOLESALERS	000047
-\$4,992,862.48	-10,253,086.62	60300	UNLEADED GASOLINE	37	OTHER WHOLESALERS	000047
-\$1,649,316.51	-3,118,164.00	60300	UNLEADED GASOLINE	37	OTHER WHOLESALERS	000047
-\$9,791,821.65	-19,580,942.66	60300	UNLEADED GASOLINE	37	OTHER WHOLESALERS	000047
-\$3,726,073.08	-6,880,621.86	60300	UNLEADED GASOLINE	37	OTHER WHOLESALERS	000047
-\$6,092,097.12	-11,077,762.92	60300	UNLEADED GASOLINE	37	OTHER WHOLESALERS	000047

[illegible]

-\$9,144,761.93	-16,626,064.98 60300	UNLEADED GASOLINE	37	OTHER WHOLESALERS	000047
\$10,219.04	18,495.96 60300	UNLEADED GASOLINE	37	OTHER WHOLESALERS	000047
-\$3,526,000.00	-6,300,000.00 60300	UNLEADED GASOLINE	37	OTHER WHOLESALERS	000047
-\$4,157,948.27	-8,037,819.72 60300	UNLEADED GASOLINE	37	OTHER WHOLESALERS	000047
-\$1,380,794.35	-3,150,958.86 60300	UNLEADED GASOLINE	37	OTHER WHOLESALERS	000047
-\$5,640.22	-30,250.08 60300	UNLEADED GASOLINE	37	OTHER WHOLESALERS	000047
-\$9,150,189.27	-11,402,104.96 60303	SUPER UNLEADED GASOLINE	37	OTHER WHOLESALERS	000043
-\$11,397,485.67	-14,141,757.84 60303	SUPER UNLEADED GASOLINE	37	OTHER WHOLESALERS	000047
-\$6,872,505.84	-10,516,178.82 60303	SUPER UNLEADED GASOLINE	37	OTHER WHOLESALERS	000047
-\$10,345,575.75	-12,277,191.78 60303	SUPER UNLEADED GASOLINE	37	OTHER WHOLESALERS	000047
-\$4,165,598.98	-4,891,963.64 60303	SUPER UNLEADED GASOLINE	37	OTHER WHOLESALERS	000043
-\$4,412,095.96	-5,982,502.68 60303	SUPER UNLEADED GASOLINE	37	OTHER WHOLESALERS	000043
-\$924,000.00	-1,050,000.00 60303	SUPER UNLEADED GASOLINE	37	OTHER WHOLESALERS	000047
-\$6,730,356.72	-8,483,167.98 60303	SUPER UNLEADED GASOLINE	37	OTHER WHOLESALERS	000047
-\$6,932,951.64	-8,071,749.84 60303	SUPER UNLEADED GASOLINE	37	OTHER WHOLESALERS	000047
-\$4,165,712.34	-7,100,022.72 60303	SUPER UNLEADED GASOLINE	37	OTHER WHOLESALERS	000047
-\$2,822,288.45	-6,378,052.80 60303	SUPER UNLEADED GASOLINE	37	OTHER WHOLESALERS	000047
-\$2,822,288.45	-6,378,052.80 60303	SUPER UNLEADED GASOLINE	37	OTHER WHOLESALERS	000047
-\$2,822,288.45	-6,378,052.80 60303	SUPER UNLEADED GASOLINE	37	OTHER WHOLESALERS	000047
-\$2,822,288.45	-6,378,052.80 60303	SUPER UNLEADED GASOLINE	37	OTHER WHOLESALERS	000047
-\$2,589,166.39	-6,266,977.92 60303	SUPER UNLEADED GASOLINE	37	OTHER WHOLESALERS	000047
-\$696,909.21	-1,474,296.60 60303	SUPER UNLEADED GASOLINE	37	OTHER WHOLESALERS	000047
-\$1,249,295.40	-3,328,651.02 60303	SUPER UNLEADED GASOLINE	37	OTHER WHOLESALERS	000047
-\$1,429,039.01	-4,025,481.86 60303	SUPER UNLEADED GASOLINE	37	OTHER WHOLESALERS	000047
-\$395,625.20	-837,301.92 60303	SUPER UNLEADED GASOLINE	37	OTHER WHOLESALERS	000047
-\$1,024,830.94	-2,080,874.88 60303	SUPER UNLEADED GASOLINE	37	OTHER WHOLESALERS	000047
-\$5,154,260.04	-9,544,925.88 60303	SUPER UNLEADED GASOLINE	37	OTHER WHOLESALERS	000047
\$5,154,260.04	9,544,925.88 60303	SUPER UNLEADED GASOLINE	37	OTHER WHOLESALERS	000047
-\$5,154,260.04	-9,544,925.88 60303	SUPER UNLEADED GASOLINE	37	OTHER WHOLESALERS	000047
-\$4,918,213.87	-9,146,191.74 60303	SUPER UNLEADED GASOLINE	37	OTHER WHOLESALERS	000047
-\$2,036,278.28	-3,526,022.64 60303	SUPER UNLEADED GASOLINE	37	OTHER WHOLESALERS	000047
-\$1,238,440.74	-2,081,412.90 60303	SUPER UNLEADED GASOLINE	37	OTHER WHOLESALERS	000047
-\$364,491.44	-631,153.74 60303	SUPER UNLEADED GASOLINE	37	OTHER WHOLESALERS	000047
\$128,693.99	-312,314.94 60303	SUPER UNLEADED GASOLINE	37	OTHER WHOLESALERS	000043
-\$664,649.17	-956,744.88 60400	REGULAR GASOLINE	37	OTHER WHOLESALERS	000047
-\$628,623.85	-1,031,270.94 60400	REGULAR GASOLINE	37	OTHER WHOLESALERS	000047
-\$784,606.58	-996,538.94 60400	REGULAR GASOLINE	37	OTHER WHOLESALERS	000047
-\$395,307.39	-497,241.78 60400	REGULAR GASOLINE	37	OTHER WHOLESALERS	000047
-\$634,634.07	-1,052,256.66 60400	REGULAR GASOLINE	37	OTHER WHOLESALERS	000043
-\$387,450.00	-756,000.00 60400	REGULAR GASOLINE	37	OTHER WHOLESALERS	000047
-\$335,475.00	-630,000.00 60400	REGULAR GASOLINE	37	OTHER WHOLESALERS	000047
-\$262,027.50	-483,000.00 60400	REGULAR GASOLINE	37	OTHER WHOLESALERS	000047
-\$282,555.00	-483,000.00 60400	REGULAR GASOLINE	37	OTHER WHOLESALERS	000047
-\$738,885.00	-1,302,000.00 60400	REGULAR GASOLINE	37	OTHER WHOLESALERS	000047
-\$396,270.00	-714,000.00 60400	REGULAR GASOLINE	37	OTHER WHOLESALERS	000047
-\$221,550.00	-420,000.00 60400	REGULAR GASOLINE	37	OTHER WHOLESALERS	000047
-\$223,650.00	-420,000.00 60400	REGULAR GASOLINE	37	OTHER WHOLESALERS	000047
-\$516,757.50	-1,071,000.00 60400	REGULAR GASOLINE	37	OTHER WHOLESALERS	000047
-\$14,475.65	-2,081,769.90 60300	UNLEADED GASOLINE	47	OTHER CONSUMERS	000118
-\$14,396.40	-26,659.92 60300	UNLEADED GASOLINE	47	OTHER CONSUMERS	000047
-\$14,984.99	-16,742.88 60303	SUPER UNLEADED GASOLINE	47	OTHER CONSUMERS	000043
-\$49,780.62	-57,383.76 60303	SUPER UNLEADED GASOLINE	47	OTHER CONSUMERS	000043
\$31.23	35.70 60303	SUPER UNLEADED GASOLINE	47	OTHER CONSUMERS	000118
-\$1,664,923.56	-2,071,499.64 60303	SUPER UNLEADED GASOLINE	47	OTHER CONSUMERS	000118
-\$252,564.46	-311,808.00 60400	REGULAR GASOLINE	47	OTHER CONSUMERS	000118

001000000089806
001000000089806

EXEC SALES GEN - BAYONNE NJ
EXEC SALES GEN - BAYONNE NJ

474101
474101

8406
8505

35
35

845
845

35
35

77777
77777

017
017

-311,808.00 60400
-791.70 60400

-311,808.00 60400
-791.70 60400

REGULAR GASOLINE
REGULAR GASOLINE

47
47

OTHER CONSUMERS
OTHER CONSUMERS

000118
000118

72806
72806

BAYONNE NJ AREA EXCH SETLM
BAYONNE NJ AREA EXCH SETLM

EXHIBIT 10

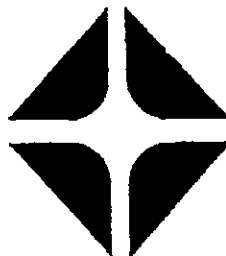
Post-It™ brand fax transmittal memo 7671		# of pages > 10
To	Clair Thonkron	
From	Dave Bott	
Co.	Omega Flex	
Co.	ARCO Chem.	
Dept.	J	
Phone #	559-5730	
Fax #	524-7282	
Fax #	259-2581	

MTBE OCTANE ENHANCER

TECHNICAL GUIDANCE AND RECOMMENDED PRACTICES FOR STORAGE & HANDLING

5/22/90

ARCO Chemical Company
3801 West Chester Pike
Newtown Square, PA 19073
215-359-5730



5103

LAN0187311

INTRODUCTION

MTBE (methyl-t-butyl ether) is currently used commercially as an octane enhancer in gasoline in the United States and other parts of the world. ARCO Chemical has published a product bulletin which describes its value as an octane enhancer.

We also recognize the need to provide more specific guidance to customers on product handling during storage and shipping. This includes material compatibility and safety information. This handling and storage bulletin has been prepared to satisfy this need. Gasoline containing MTBE is handled in the same manner as hydrocarbon-only gasoline. There are no extraordinary handling or safety precautions above those customary to gasoline. Prior to introducing neat MTBE into a storage system for the first time, the system should be inspected for elastomer compatibility and operated as outlined in the following sections of this bulletin. Neat MTBE refers to any product that contains high concentrations of MTBE (90 to 100%). Most commercial grades of MTBE contain at least 95% MTBE.

We recommend using this bulletin in conjunction with the product bulletin to become more familiar with MTBE handling and blending.

Commercial Experience

Commercial experience with non-metals and MTBE is extensive. Pump seals have included materials such as BUNA-N-70A and Teflon (1) which have performed well. Viton has given problems with shortened seal life in some cases. A floating roof tank seal with which ARCO Chemical has had success is BUNA-N/Vinyl coated fiberglass. One terminaling company has had good success with Thiothane (5) for primary wiper seals and urethane on secondary seals on internal floating roofs.

Corrugated stainless steel loading hoses with a braided sheath as well as cross-linked polyethylene lined hoses have had good success. Viton elastomer is not recommended for hose lining as commercial experience indicates problems.

Commercial experience with valves and neat MTBE shows that Teflon (1) performs well in packing glands, seats, slips, and gaskets. Asbestos gasketing has performed well in MTBE service. Viton has given problems in valves due to excessive swelling.

Experience in the field has shown that some tank liners are not compatible with neat MTBE. The liner manufacturer should be consulted before introducing neat MTBE into any tank with a liner.

Neat MTBE has been shipped in pipelines as early as 1981 without any significant loss in product quality or disruptions in pipeline operation. One large common carrier pipeline, who ships MTBE on a regular basis, has avoided any operating problems with Viton elastomer in the system by limiting batch sizes to a contact time of four hours.

Refiners along with tankers, barges, and pipelines have handled neat MTBE for the past nine years. The only reported material changes have been with Viton elastomer. Other materials have been used successfully. We will continue to monitor this important area and keep you informed.

- (1) Viton, Kalrez, and Teflon are registered trademarks of E. I. DuPont de Nemours and Co.
- (2) Hydrin is a registered trademark of B. F. Goodrich Co.
- (3) Flourel is a registered trademark of 3M Company.
- (4) Chemraz is a registered trademark of Green Tweed Co.
- (5) Thiothane is a registered trademark of United Technology, Inc.

EXHIBIT 11



UNITED STATES DISTRICT COURT
SOUTHERN DISTRICT OF NEW YORK

**In Re: Methyl Tertiary Butyl Ether ("MTBE")
Products Liability Litigation**

**Master File No. 1:00 – 1898
MDL 1358 (SAS)**

This document refers to:

*County of Suffolk and Suffolk County Water Authority v.
Amerada Hess Corp et al.*, No. 04 Civ. 5 424
United Water New York Inc. v. Amerada Hess Corp., et al.,
No. 04 Civ. 2389

**DEFENDANT GETTY PROPERTIES CORP.'S AMENDED
DISCLOSURE PURSUANT TO JUNE 9, 2005 DIRECTIVE**

Defendant Getty Properties Corp. ("GPC") provides the following amended responses as its responses to the Amended Successor Liability Questionnaire. The following responses supersede the responses filed by GPC on October 14, 2005. Pursuant to the Federal Rules of Civil Procedure, the Local Civil Rules of the Southern District of New York, and the Court's August 12, 2005 directive, GPC provides this information for the New York focus cases in which it has been named as a defendant. GPC reserves the right to supplement these responses if additional information is located.

Question No. 1: For each year, beginning with January 1, 1979 to date, identify whether GPC engaged in designing, manufacturing, refining, distributing or marketing MTBE, TBA and/or gasoline containing MTBE or TBA ("MTBE Activities").

Response: GPC ceased petroleum related operations in March 1997. Accordingly, all of GPC responses relate to the period from January 1, 1979 and prior to April 1997. GPC has never been engaged in the design, manufacture, refining, distribution or marketing of MTBE or TBA. During this period prior to April 1997, GPC's preference was to purchase and distribute gasoline with ethanol. During this period prior to April 1997, GPC purchased from independent third-parties gasoline containing MTBE for retail sale and distribution in months (approximately mid-April to mid-September) when applicable governmental regulations and market conditions prevented GPC from selling gasoline containing ethanol. During the aforesaid months, GPC purchased gasoline containing MTBE from independent third-parties which it subsequently distributed and sold. Throughout the year, GPC received gasoline containing MTBE at its Long Island City and Mount Vernon, New York terminals.

Question No. 2(A): If GPC ceased its MTBE Activities at any time, identify which, if any, of GPC's operating entities and/or directly or indirectly held subsidiaries continued the MTBE Activities, and the start and end date of such activities.

Response: GPC ceased the activities described above since March 1997.

Question No. 2(B): If any of the plaintiffs' causes of action against GPC are proven at trial and GPC would claim that at some point in time liability for those causes of action shifted, identify whether there are any documents that explicitly refer to a shift in liability for past or future MTBE Activities. If the entity named does not dispute that it would be liable in place of GPC should any liability be found, then no documentation need be produced so long as both GPC and the named entity stipulate in writing that there is no dispute. If the entity named disputes that it would be liable, then GPC must produce documentation as to its claim that liability passed to that entity.

Response: GPC ceased operations in March 1997 and therefore, is not liable for any cause of action for the period of time after March 1997. The entity potentially liable for such post-March 1997 causes of action is defendant Getty Petroleum Marketing Inc. ("Getty Marketing"). Getty Marketing, a Delaware corporation, was formed in October 1996 and commenced operation March 1997 by way of a "spin-off" from Getty Petroleum Corp. of its petroleum marketing operations. Getty Petroleum Corp. changed its name to Getty Realty Corp., which then changed its name to Getty Properties Corp.

In connection with the "spin-off," GPC and Getty Marketing entered into a master lease for the terminals and gas station properties that comprised the retail petroleum operations of Getty Marketing, which master lease was amended and restated in November 2000 (the "Master Lease"). Contemporaneously with the execution and delivery of the Master Lease, the parties entered into an Environmental Indemnity Agreement (the "Indemnity"). Pursuant to the Master Lease and the Indemnity, Getty Marketing could be responsible for damages arising out of certain of Plaintiff's causes of action against GPC.

Question No. 3(A): If GPC ceased its MTBE Activities at any time, identify whether a successor-in-interest (e.g. a purchaser, a newly-formed entity) continued the MTBE Activities, and the start and end date of such activities.

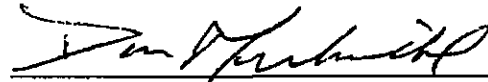
Response: See response to question 2(B).

Question No. 3(B): If any of plaintiffs' causes of action against GPC are proven at trial and GPC would claim that at some point in time liability for those causes of action shifted, identified whether there are any documents that explicitly refer to a shift in liability for past or future MTBE Activities. If the entity named does not dispute it would be liable in place of GPC should any liability be found, then no documentation need be produced so long as both GPC and the named entity stipulate in writing that there is no dispute. If the entity named disputes that it would be liable, then GPC must produce documentation as to its claim that liability passed to that entity.

Response: See response to question 2(B) and documentation referenced therein.

Dated: October 18, 2005

Respectfully submitted,

A handwritten signature in dark ink, appearing to read "Dan Mulvihill", is written over a horizontal line.

John McGahren (JM 3568)

Daniel F. Mulvihill (DM 7007)

LATHAM & WATKINS LLP

885 Third Avenue, Suite 1000

New York, NY 10022

Phone: (212) 906-1200

Facsimile: (212) 751-4864

Counsel for Getty Properties Corp.

EXHIBIT 12



Date: June 26, 1988

Subject: MTBE WHITE PAPER REVISION

From/Location: R. H. Turner

To/Location: A. W. Johnson
H. G. Johnson
J. D. Kowal
R. C. Morse
E. G. Reilly
R. R. Remick
K. G. Riley
D. H. Smithcc: WJP
DTB

Need to develop
ETBE comments
for ARCO Products
per Lyon's Andix

For your information, attached is the revised
MTBE "white paper".

WJL

RHT:kem
Encl.

6007 ✓

cc: K. L. Boskhaus
L. K. Cohu
J. P. Emerson
P. J. Ferrall
F. Formway
L. D. Kosonen
J. E. McGetrick
G. A. McKay

EXHIBIT

3

MTBE Evaluation

MTBE (methyl tertiary butyl ether) is a high octane (110 R+M/2), low volatility (approximately 9 RVP) gasoline blending component currently being offered for sale by ARCO Chemical Company. In order to aid in the purchase decision, the acceptability of MTBE as a gasoline blending component has been carefully investigated by the Major Products Specification Committee. A summary of the results of these investigations follows.

Refinery Benefit

MTBE with its high octane and low vapor pressure gasoline blending properties provides needed blending flexibility to refinery operations when upsets occur and key octane component supply units come down. Economic feasibility of MTBE use will depend on negotiated price. Currently, it is not expected everyday use in today's operations would be cost effective; but as intermittent problems occur, MTBE could provide an economic "quick fix." MTBE could also act as a "trimming agent" when a product is just slightly off-spec in octane. In addition, as lead phasedown progresses and other expected environmental regulations such as increasing fuel volatility control and possible aromatic limits are instituted, the refinery is faced with ever increasing octane needs which MTBE could fill. Further, MTBE use in the gasoline blending pool could result in the ability to increase unleaded premium production or octane level.

Blending Limit

Under the Clean Air Act, EPA has the regulatory authority to control gasoline blending components to protect emission systems from possible fuel-related degradation. Data submitted by ARCO resulted in a 1978 waiver which approved the use of up to 7 V% MTBE in gasoline. In 1981 the EPA "Substantially Similar" ruling increased allowable use to 11 V% (2 wt. % Oxygen) in the fuel.

Industry Activity

Pointing to the acceptability of MTBE is its widespread production and use as a gasoline blending component in Europe and the eastern part of the United States. MTBE usage constitutes a little less than 1% of the gasoline pool in Europe. This represents 220 MM gal/year which is projected to grow to 520 MM gal/year by 1990. Arco Chemical currently does not produce or have any plans to produce MTBE in Europe. The European Economic Community last December ruled that all of its member countries by January 1, 1988 will be required to allow 10-15% MTBE in gasoline via legislated gasoline quality specifications.

Eastern U. S. producers in addition to ARCO Chemical include Amoco, Champlin, Chevron, Exxon, Phillips, Shell and Texaco. Others who do not produce MTBE but are known to blend MTBE in their gasoline include

• ~~ARCO~~
• CHEVRON

EXHIBIT 13



September 7, 2007

Daniel F. Mulvihill
973-848-5697
dmulvihill@pattonboggs.com

VIA ELECTRONIC MAIL

Robin L. Greenwald, Esq.
Weitz & Luxenberg
180 Maiden Lane
New York, NY 10038

Re: In Re MTBE Litigation, MDL 1358
Suffolk County, et al. v. Amerada Hess Corp., et al.
Case Management Order No. 28

Dear Ms. Greenwald:

We write on behalf of defendant Getty Properties Corp. ("Getty Properties") in response to the Court's order embodied in Case Management Order ("CMO") No. 28, ordering Defendants in the above-captioned action to provide certain information to Plaintiffs regarding the production of gasoline.

In response to section (a) of CMO No. 28, the "total volume of MTBE-gasoline" produced by Getty Properties from 1979 until 2003 is zero. Although the term "produce" is undefined, Getty Properties has never refined, manufactured, blended or otherwise produced MTBE-containing gasoline, nor did the former Getty Petroleum Corp. See Defendant Getty Properties Corp.'s Responses to Plaintiff City of New York's Second Set of Interrogatories, dated April 13, 2007, at No. 5.

In response to section (b) of CMO No. 28, Getty Properties has not refined, manufactured, blended or otherwise produced any gasoline since the gasoline marketing and distribution business of the former Getty Petroleum Corp. was spun-off to Getty Petroleum Marketing, Inc. ("GPMI"), a company that is not owned, controlled by or affiliated with Getty Properties, in March 1997. Getty Properties is a real estate investment trust, not a producer or marketer of gasoline. Thus, the number of gallons of gasoline produced by Getty Properties in the years 1997-2003 is zero.

From 1990 through 1997, the former Getty Petroleum Corp. blended RBOB gasoline with ethanol when feasible to meet requirements for oxygenated fuels. The documents that reflect the number of gallons of ethanol-blended gasoline blended by Getty Petroleum Corp.

PATTON BOGGS LLP
ATTORNEYS AT LAW

Robin L. Greenwald, Esq.
September 7, 2007
Page 2

were transferred to GPMI in 1997, and are owned and in the possession of GPMI. Getty Properties does not believe that it is obligated to respond on behalf of the former Getty Petroleum Corp. with respect to CMO No. 28, and objects to Plaintiffs' attempts to compel it to produce information that is irrelevant to this litigation, and that is owned by and in the possession and control of another defendant, and reserves all rights to object to any such future demand. Notwithstanding these objections, Getty Properties was able to obtain from GPMI the number of gallons of ethanol-blended gasoline sold by Getty Properties from 1985 through 1997. Accordingly, Getty Properties responds that, to the best of its knowledge, Getty Petroleum sold the following amounts of ethanol-blended gasoline:

<u>Year</u>	<u>Gallons</u>
1985 ¹	0
1986	0
1987	0
1988	0
1989	0
1990	29,673,449
1991	183,950,447
1992	282,588,816
1993	378,754,077
1994	269,190,017
1995	297,035,065
1996	242,899,835
1997 ²	292,720,869

X

¹ Getty Petroleum Corp. was formed in 1985, and thus did not "produce" any gasoline in the years 1979-1984.

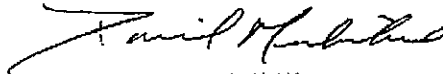
² The data provided by GPMI for 1997 does not specify whether this amount represents the amount that was sold solely by GPMI, or represents the total amount sold by both GPMI and Getty Petroleum Corp.

PATTON BOGGS^{LLP}
ATTORNEYS AT LAW

Robin L. Greenwald, Esq.
September 7, 2007
Page 3

Please feel free to call me if you have any questions.

Very truly yours,
PATTON BOGGS LLP



Daniel F. Mulvihill

cc: All Counsel of Record (via LNFS)

EXHIBIT 14

UNITED STATES DISTRICT COURT
DISTRICT OF NEW JERSEY
CIVIL ACTION NO. 08 CIV 312 (SAS)
MDL 1358

-----x

NEW JERSEY DEPARTMENT OF :
ENVIRONMENTAL PROTECTION, :
et al. :

Plaintiffs, :

against :

ATLANTIC RICHFIELD CO., :
et al., :

Defendants. :

-----x

Videotaped
Deposition of:

ROBERT MELECCI

TRANSCRIPT of testimony as taken by and before
NANCY C. BENDISH, Certified Court Reporter, RMR, CRR
and Notary Public of the States of New Jersey and
New York, at the offices of LEARY, BRIDE, TINKER &
MORAN, 7 Ridgedale Avenue, Cedar Knolls, New Jersey
on Wednesday, September 12, 2012, commencing at
10:25 a.m.

1 A. I was testifying, yes.
 2 Q. So --
 3 A. What I said, I don't recall.
 4 Q. You recall testifying?
 5 A. Yes.
 6 Q. And in that testimony do you recall
 7 testifying as to how often Dhandi Transport spilled
 8 gasoline when they delivered it to the H.P. Delta
 9 station?
 10 MR. BRIGHT: Objection to form.
 11 A. I don't remember.
 12 Q. Okay. I'm going to ask you again in
 13 terms of how often did you see Dhandi Transport
 14 spill gasoline when they delivered gasoline to the
 15 station?
 16 MR. BRIGHT: Objection, asked and
 17 answered.
 18 A. I don't know.
 19 Q. Okay, well, today you testified six
 20 times and in your previous testimony you testified
 21 every time. There is a discrepancy there and I'm
 22 just trying to figure out --
 23 MR. BRIGHT: Objection to form.
 24 A. You asked me how many times, three,
 25 six, nine, you're trying to give me a number, and

1 I'm not there all the time when they come in.
 2 Q. Okay.
 3 A. But whatever I said at that time, my
 4 memory was fresher, I don't know.
 5 Q. So you're not there -- I understand
 6 you're not there all the time. You may not be there
 7 every time they've delivered, but when you have
 8 witnessed them delivering gasoline --
 9 A. I've seen them spill it, yes.
 10 Q. Okay. And how many times have you
 11 seen them spill it?
 12 MR. BRIGHT: Objection.
 13 A. I couldn't put a number on it.
 14 Q. Is it more often than not that they
 15 would spill gasoline when you'd observe them?
 16 MR. BRIGHT: Objection, asked and
 17 answered.
 18 MR. SINKEVICH: Join.
 19 A. I don't remember.
 20 Q. Did you ever approach them -- did you
 21 ever approach Dhandi Transport and express concern
 22 that they were spilling gasoline?
 23 A. Yes.
 24 Q. And how did you approach them?
 25 A. I went up to the driver, the tanker

1 and I showed him what he's doing.
 2 Q. Okay. And what was their response?
 3 A. They don't talk English. They walked
 4 away.
 5 Q. And so did you do anything else to
 6 follow up on --
 7 A. I told the tenant.
 8 Q. You told the tenant?
 9 A. Yes.
 10 Q. And would that be Gurmail Singh?
 11 A. No. It would be their gas pumper.
 12 And, yeah, Gurmail that night.
 13 Q. How many times did you tell
 14 Mr. Singh?
 15 A. I don't recall.
 16 Q. And how many times did you approach
 17 the tanker, the Dhandi Transport employees?
 18 A. I would go more to the tenant.
 19 Q. And did you -- you said you walked up
 20 to the guys that were delivering the gasoline. Did
 21 you do that more than once?
 22 A. Yes.
 23 Q. So approximately how many times did
 24 you do that?
 25 A. I don't know.

1 Q. How many times did you inform
 2 Mr. Singh?
 3 A. Whenever I seen him.
 4 Q. Did you ever inform the Department of
 5 Environmental -- New Jersey Department of
 6 Environmental Protection?
 7 A. No.
 8 Q. Why not?
 9 A. I don't know, I just told the gas
 10 pumper to get ahold of the boss.
 11 Q. You testified earlier that you were
 12 familiar with the rules and the regulations with
 13 regards to the operation of a gas station; is that
 14 correct?
 15 A. Yes.
 16 Q. Do you know if those rules and
 17 regulations require you to report spills of
 18 gasoline?
 19 A. I called the tenant, told the tenant.
 20 They're in charge of the gas.
 21 Q. You still own the property, though,
 22 correct?
 23 A. Yes.
 24 Q. Did you do anything to ensure that
 25 the tenant took appropriate action to address the