

**EdiTracker**

Recorder parameters | Indicators of Digital Processing | Spectrum Estimation | Phase Scanning | Background Scanning | Auditory analysis | Conclusions

**Search for discontinuities of phase of stable technical signals available in audio recordings (electromagnetic interference, TTM (tape transport mechanism) beat)**

Set frequency:  61.825 Hz  123.65 Hz  185.475 Hz

Phase accuracy:  Low  Normal  High

Narrow-band filter  Noise cancellation

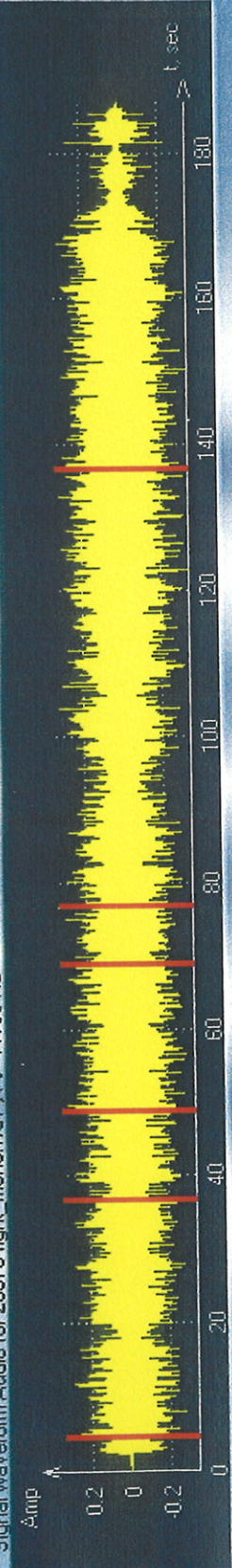
Search

Detected spots of feature discontinuity:

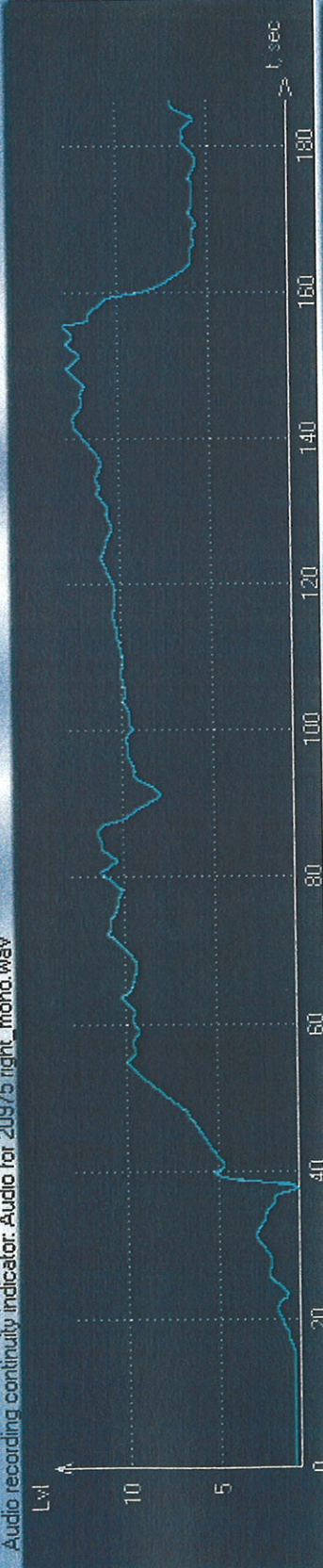
- 1. 04"845\_ms phase break 2.13393
- 2. 36"853\_ms phase break 3.68531
- 3. 48"870\_ms phase break 2.8775
- 4. 01"08" phase break 1.04357
- 5. 01"16" phase break 0.720176
- 6. 02"16" phase break 1.1584

<< Prev Next >> survey | 1 sec All

Signal waveform Audio for 20975 right\_mono.wav , Fs=44100 Hz



Audio recording continuity indicator. Audio for 20975 right\_mono.wav



Procedure

Analysis results: Detected 6 points of abrupt change in phase

?? Cancel

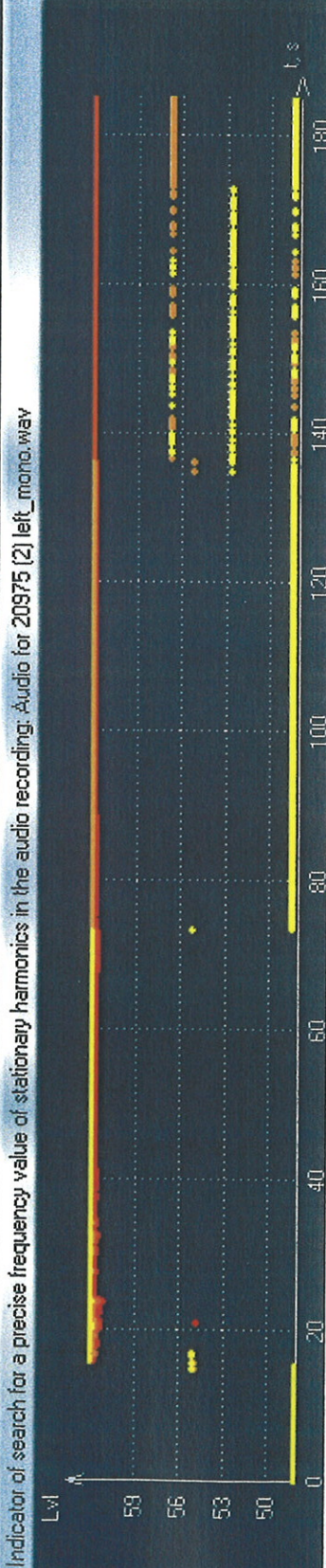
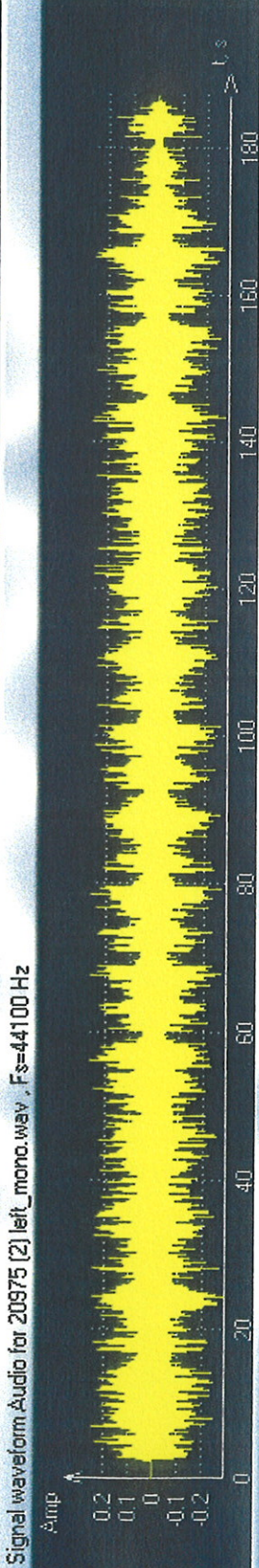
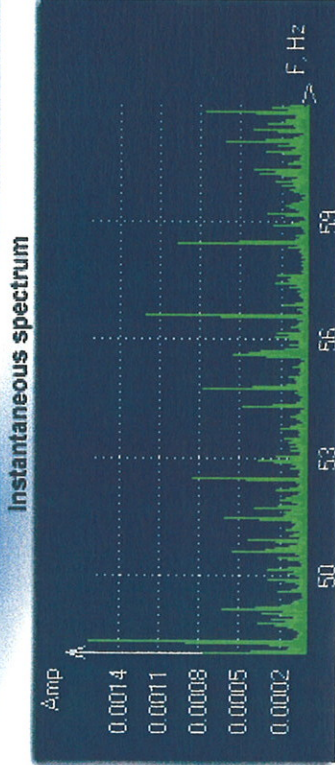
h2

Audio recording analysis for precise determination of frequency values of stationary harmonics present in the signal in the specified range

Range from 48 to 62 Hz Search

Analysis results:

- 3. 61.93 Hz
  - 4. 61.825 Hz
- Scanning accuracy: High



Procedure

Scanning accuracy:

- Low
- Normal
- High