

EXHIBIT 5
(PART 3 OF 4)

Figure 2C

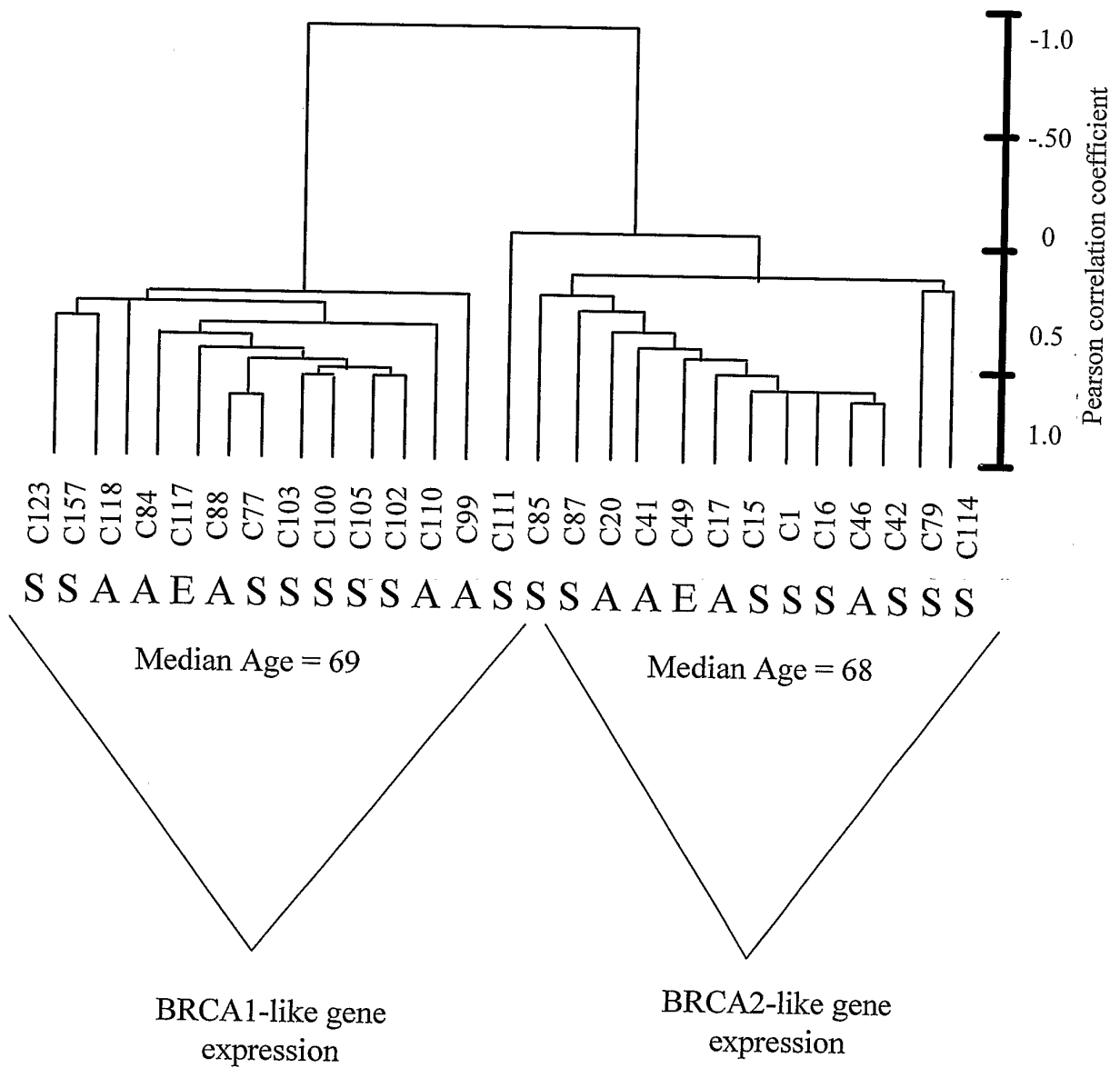


Figure 3A

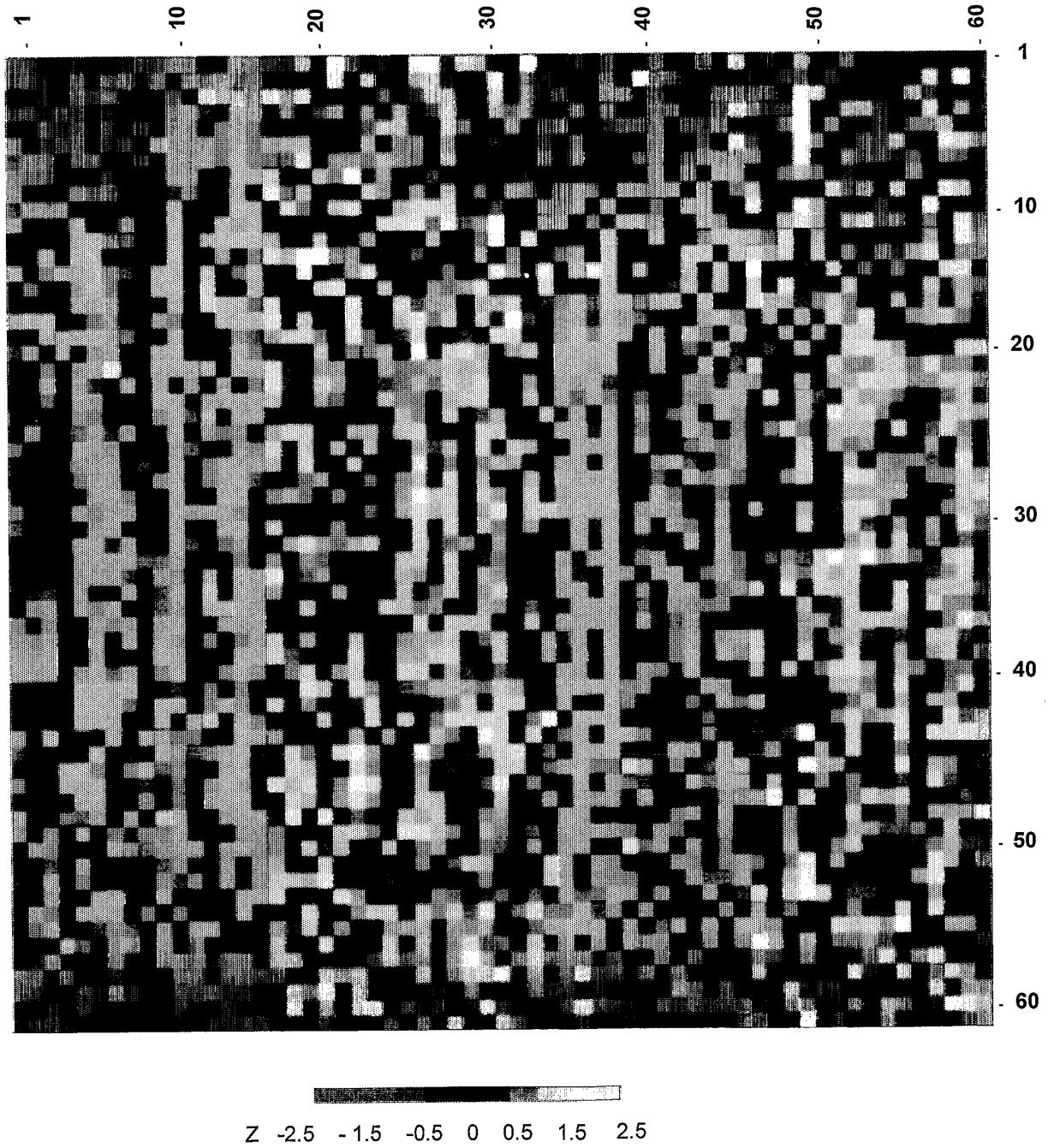
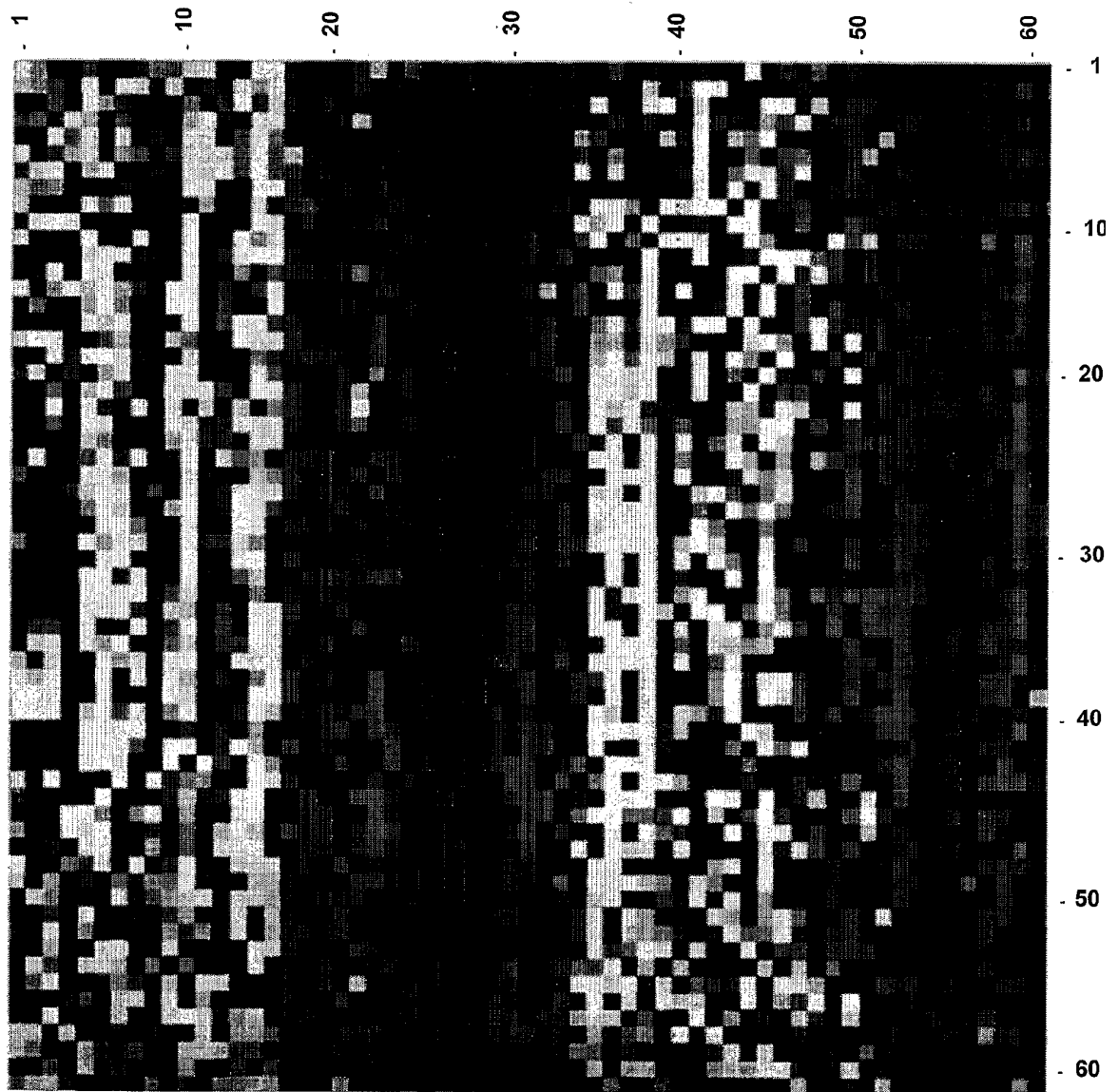


Figure 3A'



Z -2.5 -1.5 -0.5 0 0.5 1.5 2.5

Figure 3B

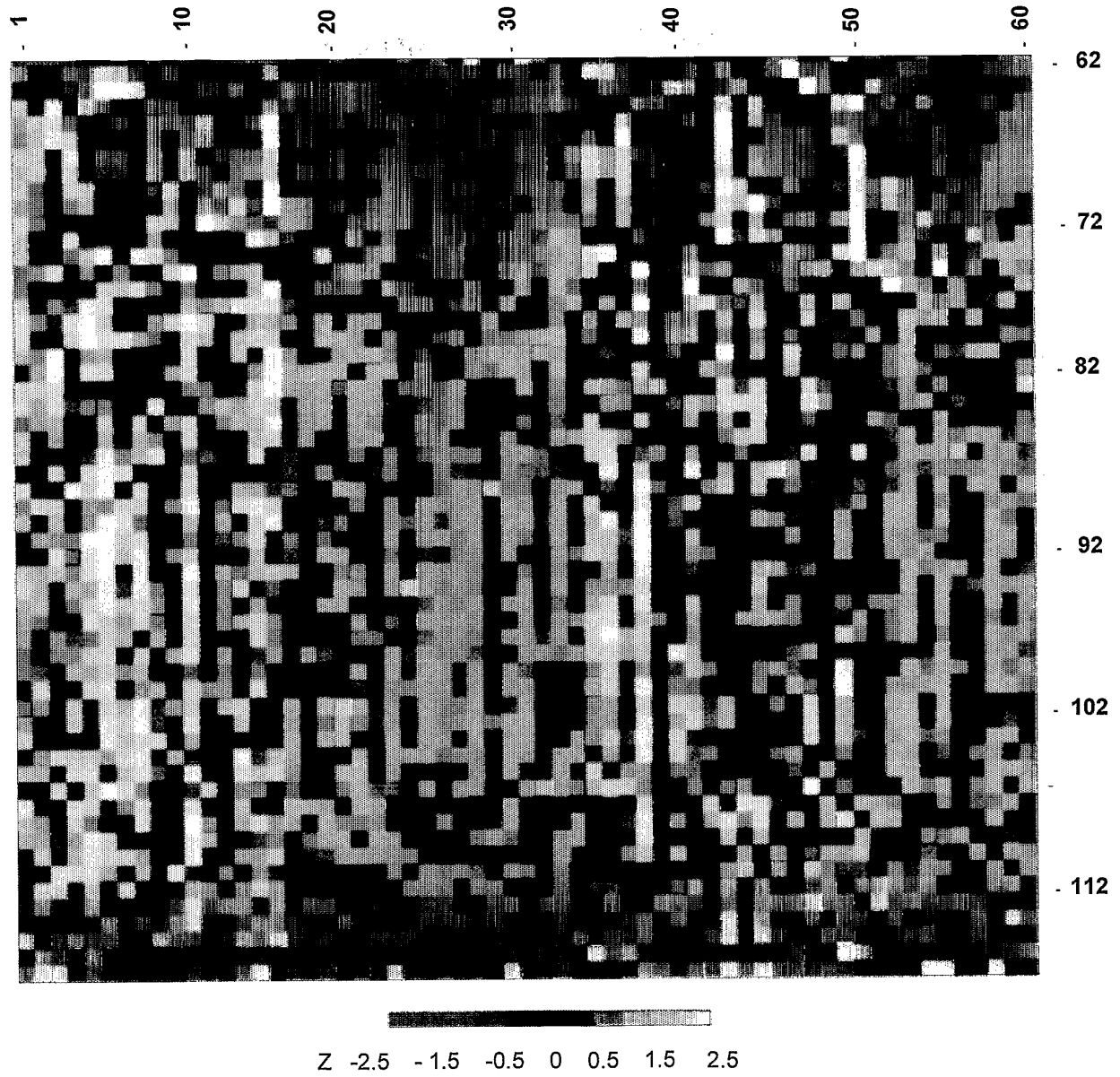


Figure 3B'

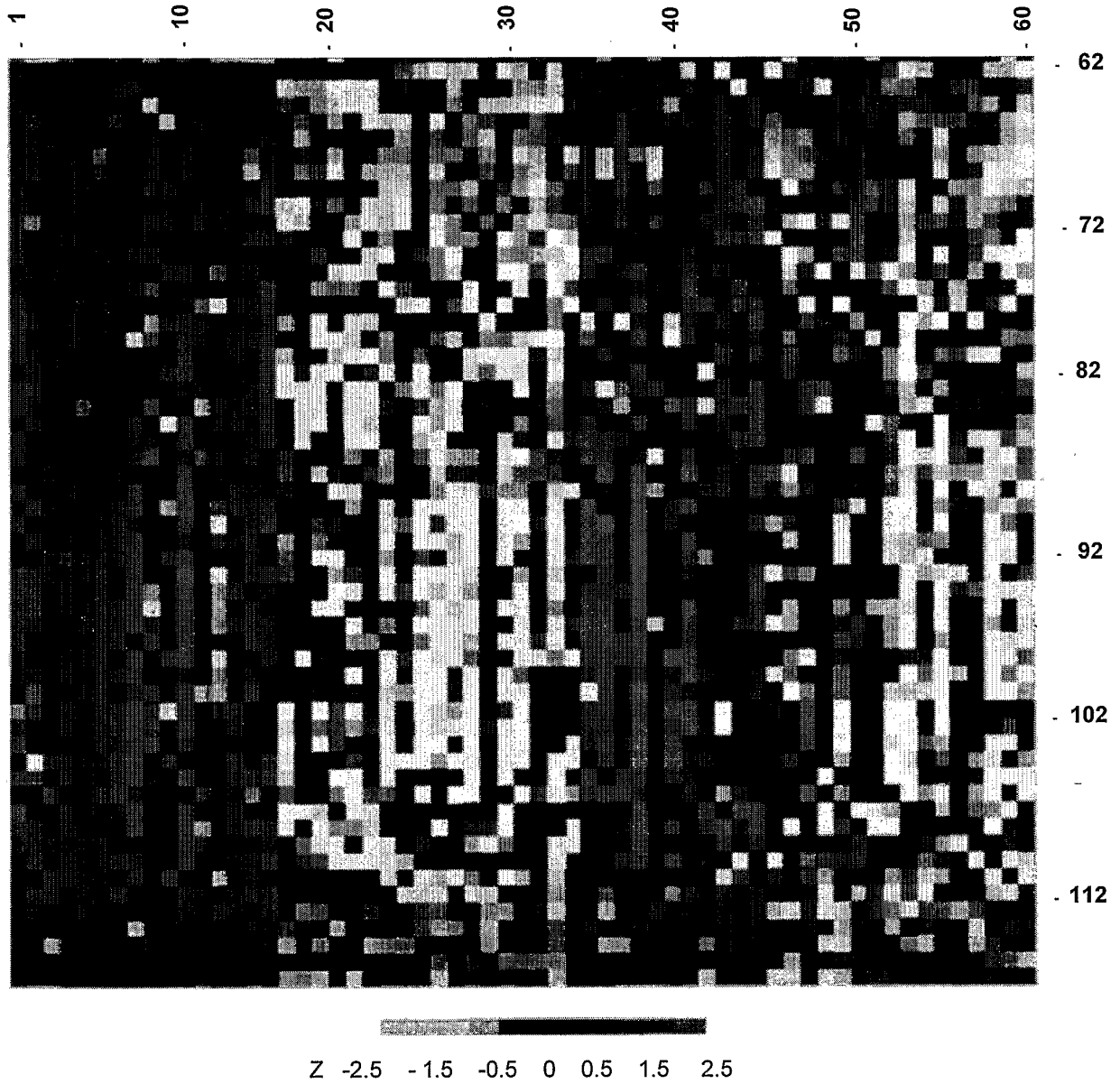


Figure 3C

DESIGNATIONS IN FIGURE 3-A

Designation	Across (tumor types)	Down (genes)	SEQ ID NO:
1	B2-1	<i>PAK2</i>	557-558
2	B2-10	<i>NCSTN</i>	678
3	B2-16	<i>HGF</i>	585-586
4	B2-2	<i>BAD</i>	587-588
5	B2-20	<i>F23149</i>	766-767
6	B2-21	<i>DKFZP564C186</i>	763-764
7	B2-22	<i>UBL1</i>	510-512
8	B2-23	<i>GCAT</i>	741-742
9	B2-24	<i>RBBP4</i>	691-692
10	B2-25	<i>CALU</i>	375
11	B2-3	<i>RUNX1</i>	518-520
12	B2-4	<i>PTK2B</i>	624-625
13	B2-6	<i>FDFT1</i>	651-652
14	B2-7	<i>IL18R1</i>	618-620
15	B2-8	<i>P14L</i>	743-744
16	B2-9	<i>RALY</i>	712-713
17	B36	<i>KIAA0218</i>	703-704
18	B39	<i>MPI</i>	666-667
19	B40	<i>IL17R</i>	583-584
20	B41	<i>KIAA0008</i>	745-746
21	B52	<i>IL1B</i>	775-776
22	B54	<i>RAB3A</i>	739-740
23	B55	<i>HARS</i>	662-663
24	B60	<i>TUFM</i>	659
25	B61	<i>PEF</i>	719-720
26	B62	<i>GNB2</i>	674-675
27	B63	<i>SECRET</i>	655-656
28	B64	<i>SLC9A1</i>	657-658
29	B70	<i>NAGA</i>	653-654
30	B74	<i>MNAT1</i>	660-661

Figure 3C, continued

DESIGNATIONS IN FIGURE 3-A

Designation	Across (tumor types)	Down (genes)	SEQ ID NO:
31	B77	<i>EST</i>	672-673
32	B78	<i>COVA1</i>	788-789
33	B79	<i>LOX</i>	747-748
34	B80	<i>MAPRE1</i>	760-761
35	C100	<i>FLJ22059</i>	770-771
36	C102	<i>ILK</i>	609-611
37	C103	<i>PISD</i>	749-750
38	C105	<i>PPIA</i>	375
39	C107	<i>EIF4A1</i>	664-665
40	C110	<i>KIAA0144</i>	705-706
41	C117	<i>TCEB2</i>	548-550
42	C118	<i>GART</i>	600-602
43	C77	<i>TAGLN2</i>	668-669
44	C84	<i>UBE1</i>	533
45	C85	<i>FLJ12442</i>	701-702
46	C99	<i>PPY2</i>	733-734
47	C79	<i>MAP2K3</i>	626-628
48	C123	<i>GTPBP1</i>	697-698
49	C87	<i>NM23-H1</i>	551-553
50	C95	<i>SF3B4</i>	777
51	C111	<i>AKT1</i>	504-506
52	C114	<i>PPP2R5A</i>	621-623
53	C15	<i>APMCF1</i>	731-732
54	C16	<i>ZNF173</i>	589-591
55	C17	<i>GS2NA</i>	699-700
56	C1	<i>AFP</i>	786-787
57	C20	<i>SLC25A11</i>	544
58	C41	<i>PPP1CB</i>	597-599
59	C42	<i>RBBP2</i>	792-793
60	C45	<i>SCYB5</i>	554-556
61	C49	<i>S100A4</i>	559-561

Figure 3D

DESIGNATIONS IN FIGURE 3-B

Designation	Across (tumor type)	Down (gene)	SEQ ID NO:
62	B2-20	<i>KIAA0365</i>	676-677
63	B2-21	<i>SFRS11</i>	682
64	B2-22	<i>KDR</i>	615-617
65	B2-23	<i>SCYA4</i>	612-614
66	B2-24	<i>SCYA4</i>	612-614
67	B2-25	<i>RGS1</i>	398
68	B2-4	<i>RGS1</i>	398
69	B2-6	<i>RGS16</i>	594-596
70	B2-7	<i>RGS16</i>	594-596
71	B2-8	<i>SFRP4</i>	515-517
72	B2-9	<i>ENPP1</i>	603-605
73	B36	<i>PDGFRB</i>	580-582
74	B39	<i>BMP6</i>	687-688
75	B40	<i>MMP13</i>	606-608
76	B41	<i>CSRP2</i>	709
77	B52	<i>WNT2</i>	797-799
78	B54	<i>WNT2</i>	797-799
79	B55	<i>APEX</i>	790-791
80	B60	<i>POLR2A</i>	693-694
81	B61	<i>GOLGA1</i>	782-783
82	B62	<i>CSNK1E</i>	785
83	B63	<i>LOC51605</i>	759
84	B64	<i>ZNF211</i>	757-758
85	B70	<i>FOXO1A</i>	707-708
86	B74	<i>ZFP161</i>	592-593
87	B77	<i>ATP7A</i>	689-690
88	B78	<i>FLJ21940</i>	768-769
89	B79	<i>TNRC12</i>	784

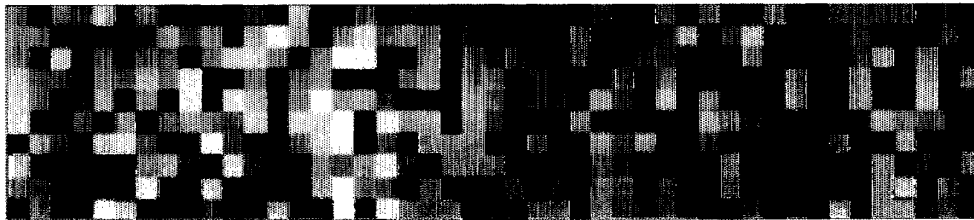
Figure 3D, continued

DESIGNATIONS IN FIGURE 3-B

Designation	Across (tumor type)	Down (gene)	SEQ ID NO:
90	B80	<i>TAL1</i>	521-523
91	C100	<i>NCOA1</i>	565-567
92	C102	<i>BRE</i>	710-711
93	C103	<i>RAB2L</i>	780-781
94	C105	<i>SAST</i>	723-724
95	C107	<i>ITGAE</i>	571-573
96	C110	<i>ARHGEF6</i>	679-681
97	C117	<i>TCF4</i>	779
98	C118	<i>TMEPAI</i>	755-756
99	C77	<i>CD36</i>	577-579
100	C85	<i>PTEN</i>	507-509
101	C99	<i>PDE6A</i>	774
102	C79	<i>CD83</i>	562-564
103	C123	<i>FLJ10701</i>	762
104	C87	<i>LOC51760</i>	534-535
105	C95	<i>SMG1</i>	695-696
106	C111	<i>WNT2</i>	797-799
107	C114	<i>IL7</i>	574-576
108	C15	<i>CRB1</i>	735-736
109	C16	<i>GABRP</i>	685-686
110	C17	<i>PLXNA2</i>	727-728
111	C1	<i>RNAC</i>	319
112	C20	<i>CUGBP1</i>	683-684
113	C41	<i>PON1</i>	670-671
114	C42	<i>RYBP</i>	568-570
115	C45	<i>CD36</i>	577-579
116	C49	<i>FLJ21661</i>	737-738

Figure 4A-C

A



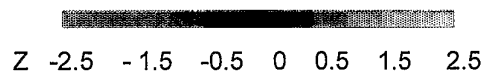
CD72
SLC24A11
LCN2
PSPPIP1
SIAHBP1
UBE1
WAS
IDH2
PCTK1

B



LOC51760
LRPAP1

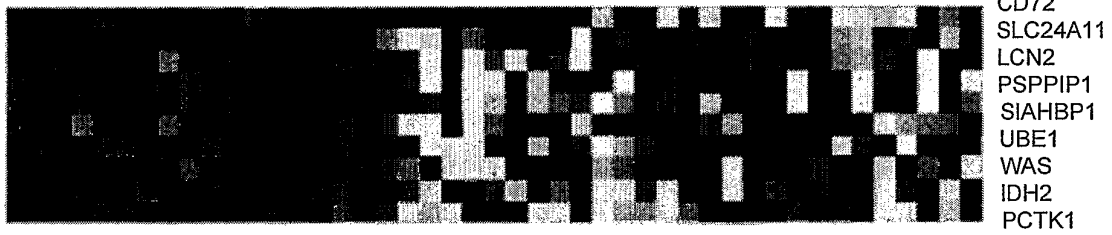
C



PSTPIP1
PSTPIP1
IDH2
PCTK1

Figure 4A-C'

A



B



C



Z -2.5 -1.5 -0.5 0 0.5 1.5 2.5

PSTPIP1
PSTPIP1
IDH2
PCTK1

Figure 4D

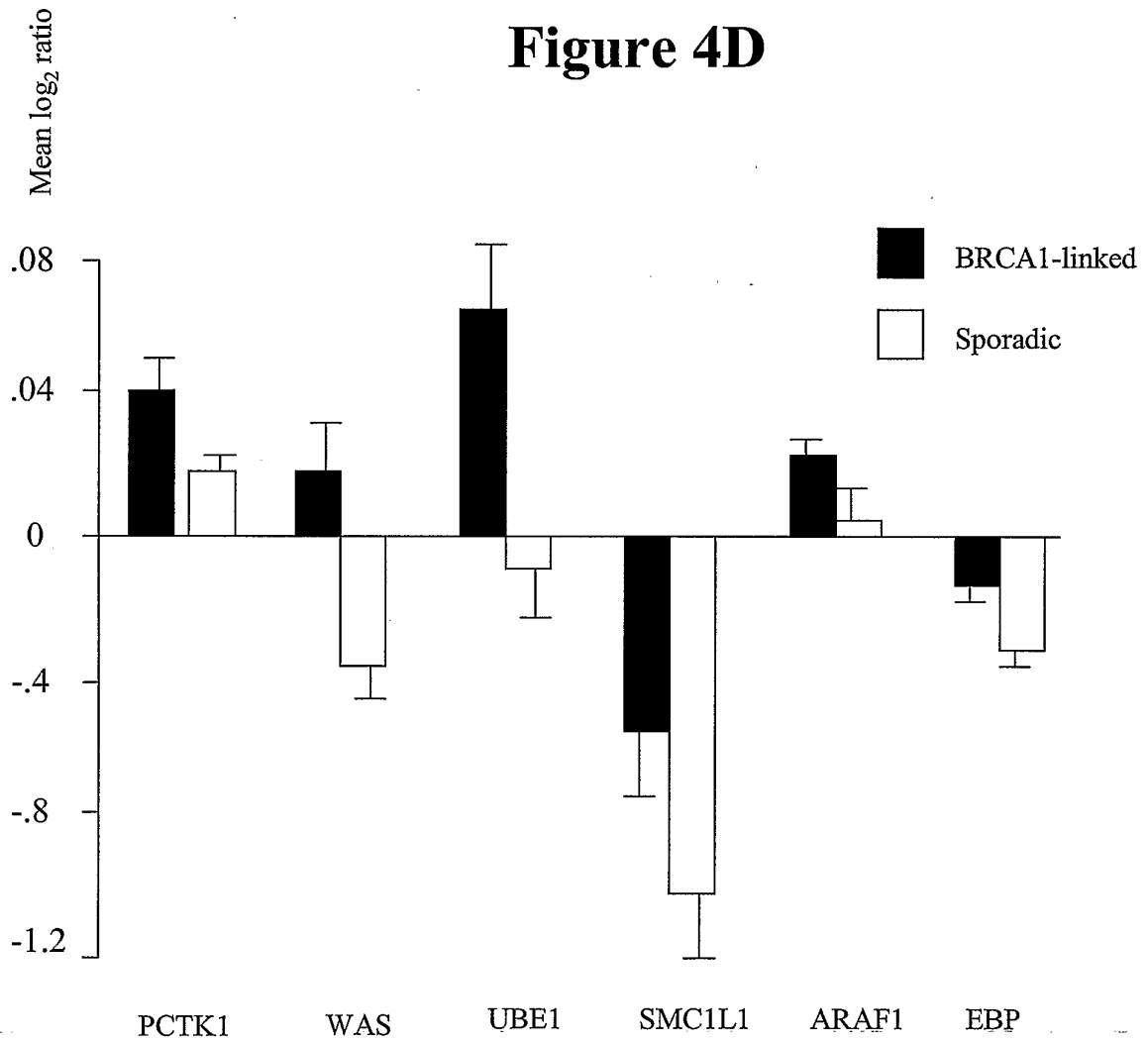


Figure 5A

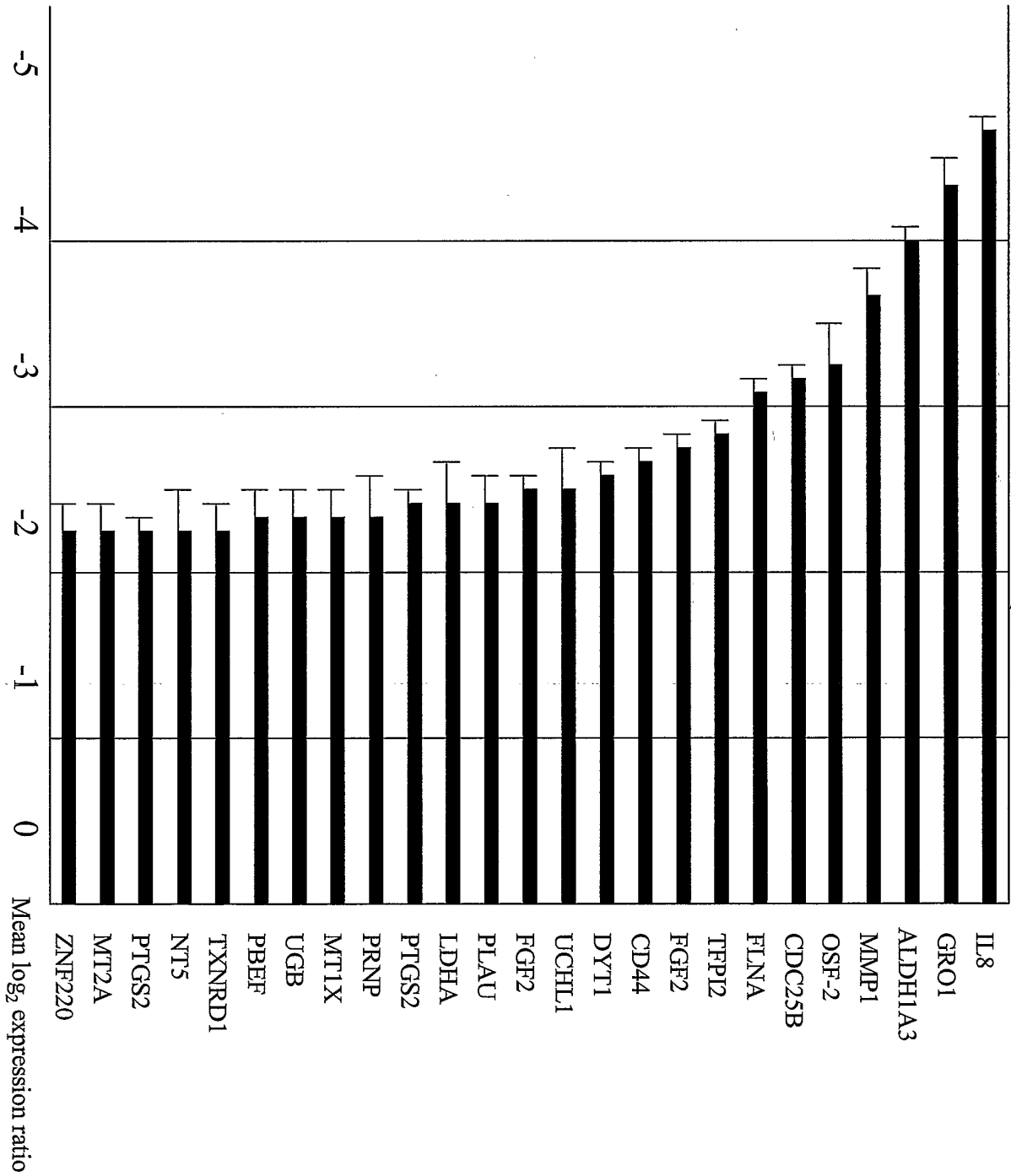


Figure 5B

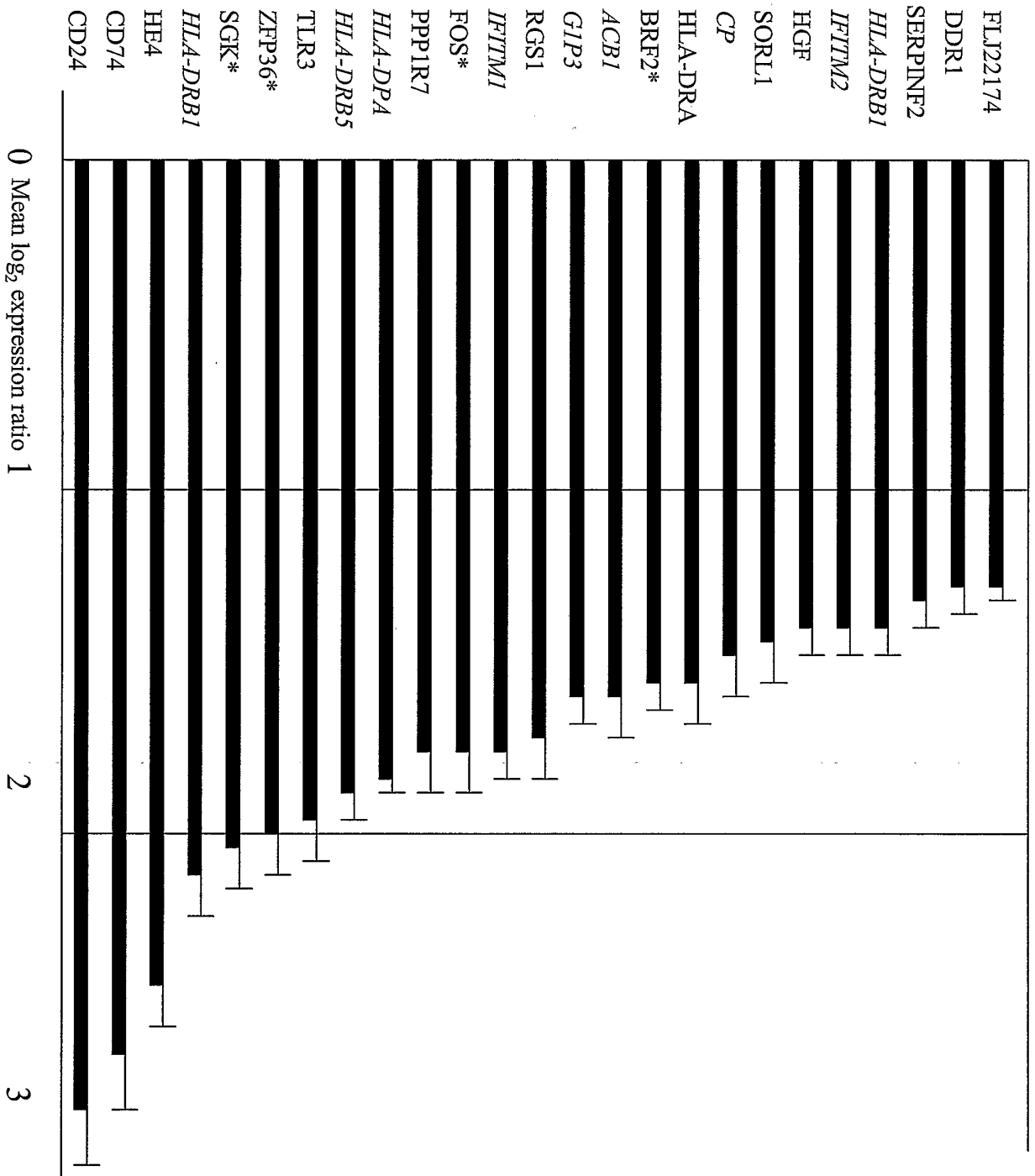


Figure 6A

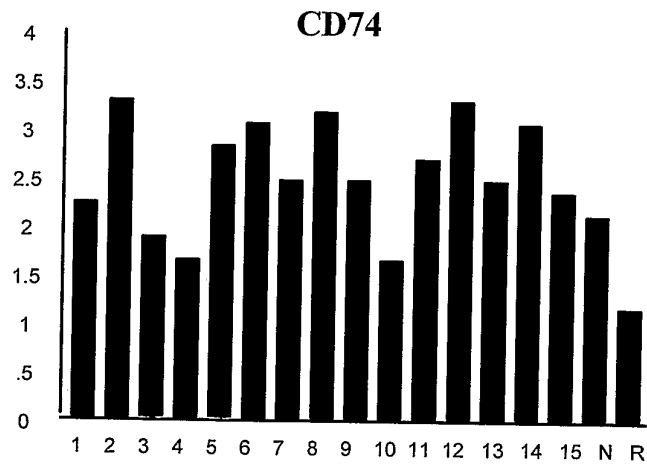
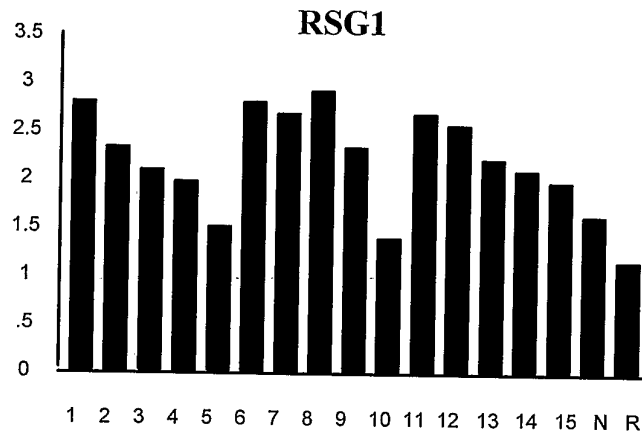
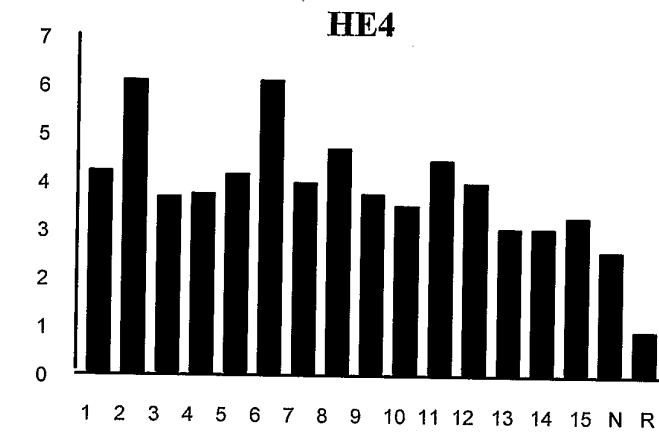
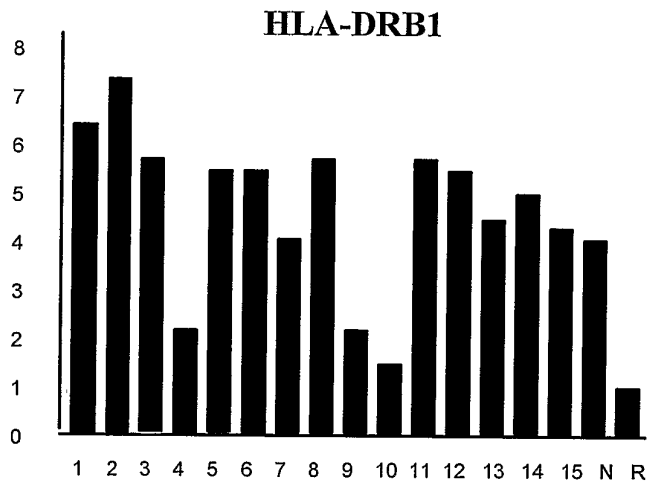
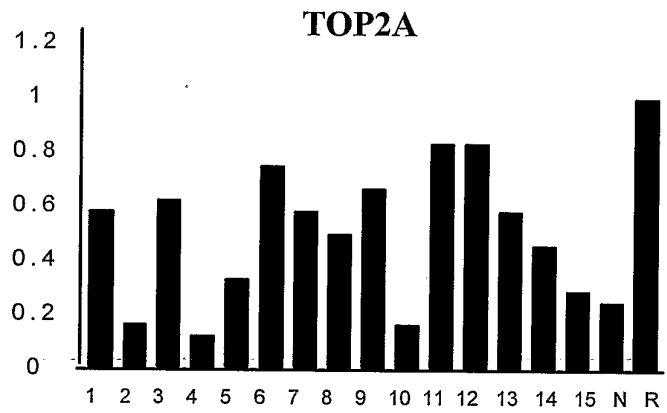
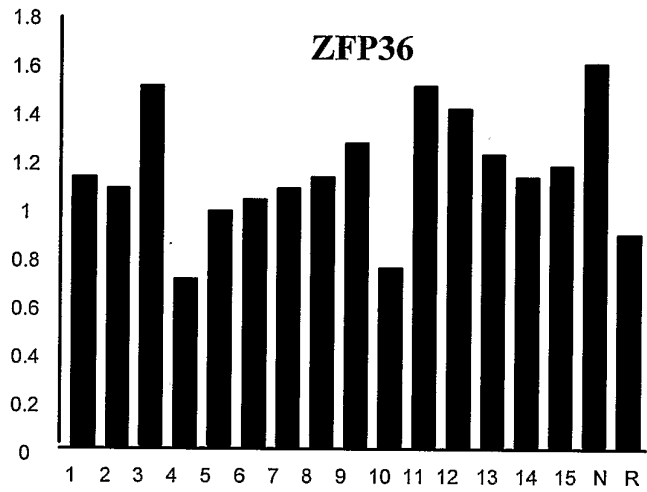


Figure 6B



ADDENDUM

Table 1. Markers that were Differentially Expressed in a cDNA Microarray Expression Profile of Sixty-One Ovarian Cancer Tumors

SEQ ID NO.	Gene	IMAGE ID No.	UniGene No.	GenBank Accession No.	Gene Description
16-17	BCKDHB	770835		AA427739; AA434304	Branched chain keto acid dehydrogenase E1, beta polypeptide (maple syrup urine disease)
18-19	SERPINF 2	82195		T68859; T68934	serine (or cysteine) proteinase inhibitor, clade F (alpha-2 antiplasmin, pigment epithelium derived factor), mem
20-22	ZNF33A	346902		D31763; W78164; W79207	KIAA0065
23-24	ZNF33A	246543		N57658; N77515	Zinc finger protein 33a (KOX 31)
25	EST	192198		H41144	Unknown
26-27	EST	128738		R16726; R09980	Homo sapiens cDNA:FLJ23371 fis, clone HEP16068, highly similar to HSTFIISH Homo sapiens mRNA for trar
28-29	EST	429211		AA007283; AA007282	ESTs
30-31	FLJ22174	295939		N67034; W04283	hypothetical protein FLJ22174
32-33	EST	415562		W80701; W78802	Unknown
34-35	EST	296488		N70208; W01059	Unknown
36-37	EST	120124		T95064; T95160	ESTs
38-39	EST	132142		R26164; R23610	Homo sapiens cDNA:FLJ21587 fis, clone COL06946
40	EST	50635		H17921	ESTs
41-43	POR	234180		S90469; H70626; H66247	Cytochrome P450 reductase
44-45	CLU	725877		AA292226; AA292410	Clusterin (complement lysis inhibitor, SP-40,40, sulfated glycoprotein 2, testosterone-repressed prostate messenger
46-47	EST	73702		T54544; T54585	Unknown
48	EST	2218314		AI744768	Unknown
49	EST	2261113		AI609063	EST

50-51	IFITM1	755599		AA419251; AA419286	Interferon induced transmembrane protein 1 (9-27)
52-54	IFITM1	509641		J04164; AA058323; AA058453	Interferon-inducible protein 9-27=interferon-induced 17kDa membrane protein
55-57	IFITM2	624655		X57351; AA187365; AA187099	Interferon-induced protein 1-8D
58-59	IFITM2	376520		AA041402; AA041501	Interferon-induced protein 1-8D
60	HE4	786675		AA451904	Epididymis-specific, whey-acidic protein type, four-disulfide core; putative ovarian carcinoma marker
61-62	KIAA0203	61008		T40715; T39659	KIAA0203 gene product
63-64	IL8RB	882183		M73969; AA480683	CXCR2=IL-8 Receptor beta
65-67	VDUP1	297954		S73591; N68956; W00656	Brain-expressed HHCPA78 homolog=Induced in HL60 cells treated with vitamin D or cycloheximide
68-69	GIP3	782513		AA448478; AA432030	Interferon, alpha-inducible protein (clone IFI-6-16)
70-72	BST2	811024		D28137; AA485371; AA485528	Bone marrow stromal cell antigen 2
73	SIAT1	897906		AA598652	Sialyltransferase 1 (beta-galactoside alpha-2,6-sialyltransferase)
74-76	DDR1	182288		U48705; H41900; H41939	Receptor protein-tyrosine kinase EDDR1
77	PL1	433573		AA701655	Human endogenous retrovirus envelope region mRNA (PL1)
78-79	EST	108422		T77847; T77926	Homo sapiens, clone MGC:12275, mRNA, complete cds
80	CEBPG	455121		AA676804	CCAAT/enhancer binding protein (C/EBP), gamma
81-82	MUC1	840687		AA488073; AA486365	Mucin 1, transmembrane
83-84	CP	223350		H86554; H86642	ceruloplasmin (ferroxidase)
85-86	HLA-DRB5	811139		AA485739; AA486460	Major histocompatibility complex, class II, DR beta 5
87-	HLA-	417711		W88967;	Major

88	DRB1			W88546	histocompatibility complex, class II, DR beta 1
89-91	CD74	725751		X00497; AA399225; AA292218	Invariant chain=la-associated invariant gamma-chain
92-93	CD74	840681		AA488071; AA486363	Invariant chain=la-associated invariant gamma-chain
94-96	HLA-DRA	117411		K01171; T89719; T89816	MHC Class II=DR alpha
97-99	HLA-DPA	207715		X00457; H62294; H62293	MHC Class II=DP alpha
100	HLA-DRB1	855547		AA664195	Major histocompatibility complex, class II, DR beta 1
101-103	HLA-DRB1	470953		M20430; AA032179; AA033653	MHC Class II=DR beta
104-106	TNFSF10	203132		U57059; H54629; H54628	TRAIL=Apo-2 ligand
107-109	H2AFL	429091		U90551; AA007585; AA007574	Histone-2A-like protein (H2A/I)
110-111	IG lambda	66560		T67053; T67054	Immunoglobulin lambda locus
112-114	IGKC	159142		M63438; R76324; R76323	Immunoglobulin kappa light chain
115-116	IGKC	840451		AA485725; AA485862	Immunoglobulin kappa light chain
117-119	RAD23A	293925		AF004230; N63943; N98412	MIR-7=monocyte/macrophage Ig-related receptor AND RAD23=UV excision repair protein (Double hit)
120-121	SCYB10	967284		X02530; AA527139	IP-10
122-123	RGS1	361323		AA017544; AA017417	regulator of G-protein signaling 1
124-126	RGS1	686248		S59049; AA262268; AA262879	BL34=RGS1=regulator of G-protein signaling which inhibits SDF-1 directed B cell migration
127-129	GAS1	365826		L13698; AA025819; AA025884	Growth arrest-specific 1
130-132	BTG2	358214		U72649; W95415; W95512	BTG2=p53 dependent inducible anti-proliferative gene homologous to Pc3/Tis21 immediate

					early genes
133-135	FOS	755279		V01512; AA496353; AA496403	c-fos
136	LSR68	1862044		AI053597	Lipopolysaccharide specific response-68 protein
137-138	JUNB	309864		N94468; W23847	Jun B proto-oncogene
139-140	JUNB	122428		T99236; T99280	Jun B proto-oncogene
141-143	COL3A1	122159		X14420; T98612; T98611	Collagen Type III Alpha 1
144-145	LUM	813823		AA447781; AA453712	lumican
146-148	EST	294506		U90916; N71007; W01902	clone 23815 mRNA
149-151	SORL1	279388		Y08110; N48698; N45548	Mosaic protein LR11=hybrid receptor gp250 precursor
152-153	RNASE6 PL	712341		AA405000; AA281840	Ribonuclease 6 precursor
154-156	HLA-B	769753		M28205; AA429012; AA429162	Human Leukocyte Antigen B
157-159	HLA-C	810142		M11886; AA464246; AA464354	Human Leukocyte Antigen C
160-161	SPON1	46173		H09099; H09449	Spondin 1, (f-spondin) extracellular matrix protein
162-163	HSRNAS EB	814526		AA459363; AA459588	RNA-binding region (RNP1, RRM) containing 1
164-166	ABCB1	813256		M14758; AA455911; AA456377	MDR1=Multidrug resistance protein 1=P-glycoprotein
167-168	ZFP36	23804		R38383; T77499	Zinc finger protein homologous to Zfp-36 in mouse
169-171	ZFP36	135880		M63625; R33813; R33812	TTP=tristetraproline=GOS24=zinc finger transcriptional regulator
172-173	ZFP36	727266		AA411987; AA402178	TTP=tristetraproline=GOS24=zinc finger transcriptional regulator
174-175	HGF	41650		R52798; R52797	hepatocyte growth factor (hepapoietin A; scatter factor)
176-178	SGK	840776		AJ000512; AA486082; AA486140	sgk=putative serine/threonine protein kinase transcriptionally modified during anisotonic and isotonic

					alteration
179-180	PPP1R7	814508		AA459351; AA459572	Protein phosphatase 1, regulatory subunit 7
181-182	CD24	204335		H59916; H59915	CD24 antigen (small cell lung carcinoma cluster 4 antigen)
183-184	TPD52	814306		AA459100; AA459318	Tumor protein D52
185-187	CXCR4	79629		X71635; T62636; T62491	CXC chemokine receptor 4=fusin=neuropeptide Y receptor=L3
188-189	JUND	767784		AA418670; AA418676	Jun D proto-oncogene
190-192	BRF2	485770		U07802; AA039882; AA039967	Tis 11d=ERF-2=growth factor early response gene
193-195	A2M	377647		M11313; AA055995; AA055907	Alpha-2-macroglobulin
196	EST	1384797		AA856938	Homo sapiens mRNA; cDNA DKFZp434O0227 (from clone DKFZp434O0227)
197-198	CD24	196519		S75311; R91610	CD24
199-201	TLR3	144675		U88879; R76099; R76150	TLR3= Toll-like receptor 3
202	ITM2A	878596	Hs.17109	AA775257	integral membrane protein 2A
203-204	GATM	42558	Hs.75335	R61229; R61228	glycine amidinotransferase (L-arginine:glycine amidinotransferase)
205-207	RNASE4	81417	Hs.283749	D37931; T60163; T60223	ribonuclease L (2',5'-oligoadenylate synthetase-dependent)
208-210	LAMA2	471642	Hs.75279	Z26653; AA034939; AA034938	laminin alpha 2 (merosin, congenital muscular dystrophy)
211	PBX3	448386	Hs.294101	AA778198	pre-B-cell leukemia transcription factor 3
212	PLA2G6	1472538	Hs.120360	AA872271	phospholipase A2, group VI (cytosolic, calcium-independent)
213	SMARCA2	814636	Hs.198296	AA481026	SWI/SNF related, matrix associated, actin dependent regulator of chromatin, subfamily a, member 2
214-215	CUGBP2	488956	Hs.211610	AA047257; AA057142	CUG triplet repeat, RNA-binding protein 2
216-218	TGFBR3	209655	Hs.79059	L07594; H62473; H61499	TGF beta receptor type III
219	STAR	859858	Hs.3132	AA679454	steroidogenic acute

					regulatory protein
220	GNG11	1636447	Hs.83381	AA999901	guanine nucleotide binding protein 11
221	CITED2	491565	Hs.82071	AA115076	Cbp/p300-interacting transactivator, with Glu/Asp-rich carboxy-terminal domain, 2
222	CTNNAL1	744647	Hs.58488	AA621315	catenin (cadherin-associated protein), alpha-like 1
223	ABCA8	743773	Hs.38095	AA634308	ATP-binding cassette, sub-family A (ABC1), member 8
224-226	KLF4	188232	Hs.7934	AF105036; H45668; H45711	GKLF=EZF=KLF4=gut-enriched Kruppel-like zinc finger protein=expressed in vascular endothelial cells
227-228	ITPR1	471725	Hs.198443	AA035450; AA035477	inositol 1,4,5-triphosphate receptor, type 1
229-230	MAF	487793	Hs.30250	AA043501; AA044658	v-maf musculoaponeurotic fibrosarcoma (avian) oncogene homolog
231-232	FOXC1	768370	Hs.284186	AA495790; AA495846	forkhead box C1
233	TCF21	461351	Hs.78061	AA699782	transcription factor 21
234-236	CCNI	248295	Hs.79933	D50310; N58511; N78101	Cyclin I
237-238	DCN	209367	Hs.76152	H64138; H64086	decorin
239-240	CBF2	789049	Hs.184760	AA452909; AA453077	CCAAT-box-binding transcription factor
241-242	EST	68049	Hs.180324	T52830; T52829	Homo sapiens, clone IMAGE:4183312, mRNA, partial cds
122	RNASE4	81417	Hs.283749		ribonuclease L (2',5'-oligoadenylate synthetase-dependent)
243	SLC4A1AP	2094012	Hs.306000	AI424433	solute carrier family 4 (anion exchanger), member 1, adapter protein
244-245	GSTM5	377731	Hs.75652	AA056232; AA056231	glutathione S-transferase M5
246	C4BPB	460470	Hs.99886	AA677687	complement component 4-binding protein, beta
247-248	HS3ST1	73609	Hs.40968	T55714; T55756	heparan sulfate (glucosamine) 3-O-sulfotransferase 1
249	CDKN1C	2413955	Hs.106070	AI828088	cyclin-dependent kinase inhibitor 1C (p57, Kip2)
250	HNRPDL	897823	Hs.170311	AA598578	heterogeneous nuclear ribonucleoprotein D-

					like
251	CIRBP	1558799	Hs.119475	AA977242	cold inducible RNA-binding protein
252	RGS2	2321596	Hs.78944	AI675670	regulator of G-protein signalling 2, 24kD
253-254	TCEAL1	786607	Hs.95243	AA478480; AA451969	transcription elongation factor A (SII)-like 1
255-256	CAV1	377461	Hs.323469	AA055835; AA055368	caveolin 1, caveolae protein, 22kD
257	ALDH1A1	855624	Hs.76392	AA664101	aldehyde dehydrogenase 1 family, member A1
258-259	RBPMS	343443	Hs.80248	W67200; W67323	RNA-binding protein gene with multiple splicing
260-261	ADAMTS1	62263	Hs.8230	T41173; T40309	a disintegrin-like and metalloprotease (reprolysin type) with thrombospondin type 1 motif, 1
262-263	DSCR1L1	51408	Hs.156007	H19440; H19439	Down syndrome critical region gene 1-like 1
264	DLK1	436121	Hs.169228	AA701996	delta-like homolog (Drosophila)
265-266	CDH11	491113	Hs.75929	AA136983; AA137109	cadherin 11, type 2, OB-cadherin (osteoblast)
138	SGK	840776	Hs.296323		sgk=putative serine/threonine protein kinase transcriptionally modified during anisotonic and isotonic alterations of cell volume
267	HFL1	450060	Hs.278568	AA703392	H factor (complement)-like 1
268-269	FOG2	38347	Hs.106309	R49439; R35921	Friend of GATA2
270	C7	898122	Hs.78065	AA598478	complement component 7
271-272	SGCE	784109	Hs.110708	AA432066; AA446750	sarcoglycan, epsilon
273	NBL1	898305	Hs.76307	AA598830	neuroblastoma, suppression of tumorigenicity 1
274-275	HBB	173385	Hs.155376	H20968; H21011	hemoglobin, beta
276-278	CARP	840683	Hs.31432	X83703; AA488072; AA486364	Cytokine inducible nuclear protein
279-280	MITF	278570	Hs.166017	N66177; N99168	microphthalmia-associated transcription factor
281-282	CDC20	898062	Hs.82906	U05340; AA598776	p55CDC
283-	EPS8	148028	Hs.2132	U12535;	epidermal growth

285				H13623; H13622	factor receptor kinase substrate (Eps8)
286-287	ARHI	345680	Hs.194695	W72033; W76278	ras homolog gene family, member I
288	B4-2	857002	Hs.75969	AA669637	proline-rich protein with nuclear targeting signal
289-291	SELE	186132	Hs.89546	M30640; H39991; H39560	ELAM1=endothelial leukocyte adhesion molecule I
292-293	PMP22	133273	Hs.103724	R26732; R26960	peripheral myelin protein 22
294	EBAF	340657	Hs.25195	W56771	endometrial bleeding associated factor (left-right determination, factor A; transforming growth factor beta superfamily)
295-296	PRKAR2 B	609663	Hs.77439	AA180007; AA181500	protein kinase, cAMP-dependent, regulatory, type II, beta
297	NFKBIE	1573311	Hs.91640	AA953975	nuclear factor of kappa light polypeptide gene enhancer in B-cells inhibitor, epsilon
298-299	KIT	269806	Hs.81665	N24824; N36279	v-kit Hardy-Zuckerman 4 feline sarcoma viral oncogene homolog
158	JUNB	309864	Hs.198951		jun B proto-oncogene
300	BCKDK	1573108	Hs.20644	AA970731	branched chain alpha-ketoacid dehydrogenase kinase
301-303	BTG1	298268	Hs.77054	X61123; N70463; W03824	BTG1=B-cell translocation gene 1=anti-proliferative
304-305	AKAP12	784772	Hs.788	AA478543; AA478542	A kinase (PRKA) anchor protein (gravin) 12
306-307	NR4A2	898221	Hs.82120	S77154; AA598611	NOT=Immediate early response protein=Nurr1 homologue=Nurr77 orphan steroid receptor family member
308-309	HBB	126531	Hs.155376	R06757; R06806	hemoglobin, beta
310-311	ARHGAP 6	768489	Hs.250830	AA495981; AA425035	Rho GTPase activating protein 6
312	PLS3	1568391	Hs.4114	AA953747	plastin 3 (T isoform)
313-314	FNTA	300015	Hs.138381	N78902; W06970	farnesyltransferase, CAAX box, alpha
315-316	TNFAIP3	770670	Hs.211600	AA476272; AA433807	tumor necrosis factor, alpha-induced protein 3
317-318	EGR1	840944	Hs.326035	AA486533; AA486628	early growth response 1
319	RNAC	795213	Hs.113052	AA453591	RNA cyclase homolog

320	PA26	813584	Hs.14125	AA447661	p53 regulated PA26 nuclear protein
321	C11orf13	1573778	Hs.72925	AA970526	chromosome 11 open reading frame 13
322	ING1L	2169465	Hs.107153	AI564029	inhibitor of growth family, member 1-like
323	RPL9	2577249	Hs.157850	AW075605	ribosomal protein L9
324-325	ADH5	813711	Hs.78989	AA453776; AA453859	alcohol dehydrogenase 5 (class III), chi polypeptide
326-327	FZD7	298122	Hs.173859	N69049; W00697	frizzled (Drosophila) homolog 7
328-329	MATN2	366100	Hs.19368	AA071473; AA082338	matrilin 2
330-331	SLC11A3	71863	Hs.5944	T52564; T57235	solute carrier family 11 (proton-coupled divalent metal ion transporters), member 3
332-333	EST	767641	Hs.122460	AA418293; AA418356	ESTs
334-335	ERCC5	292463	Hs.48576	N62586; N80359	excision repair cross-complementing rodent repair deficiency, complementation group 5 (xeroderma pigmentosum, complementation group G (Cockayne syndrome))
336-337	MGC2479	43771	Hs.79625	H05655; H05654	hypothetical protein MGC2479
338-339	RPL21	810617	Hs.184108	AA464743; AA464034	ribosomal protein L21
182	CD24	204335	Hs.286124		CD24
340-341	SLPI	378813	Hs.251754	X04470; AA683520	Secretory leukocyte protease inhibitor
342	SPP1	378461	Hs.313	AA775616	Secreted phosphoprotein 1 (osteopontin, bone sialoprotein I, early T-lymphocyte activation 1)
343-344	BF	741977	Hs.69771	L15702; AA401441	B-factor, properdin
345-347	CKS1	810899	Hs.334883	X54941; AA459292; AA459522	CDC28 protein kinase 1
348-349	MMP7	470393	Hs.2256	AA031514; AA031513	Matrix metalloproteinase 7 (matrilysin)
350-351	PAX8	742101	Hs.73149	AA405767; AA405891	Paired box gene 8
352-353	SPINT2	814378	Hs.31439	AA458849; AA459039	Serine protease inhibitor, Kunitz type, 2
354	ZWINT	451907	Hs.42650	AA706968	ZW10 interactor
355	DGKH	2544675	Hs.159073	AW052032	Diacylglycerol kinase, eta

356	HMG1Y	782811	Hs.139800	AA448261	HMG1Y High-mobility group (nonhistone chromosomal) protein isoforms I and Y
357-359	SDC4	504763	Hs.252189	X67016; AA148737; AA148736	Syndecan 4 (amphiglycan, ryudocan)
360	CDKN2A	1161155	Hs.1174	AA877595	Cyclin-dependent kinase inhibitor 2A (melanoma, p16, inhibits CDK4)
361-362	SCNN1A	810873	Hs.2794	AA458982; AA459197	Sodium channel, nonvoltage-gated 1 alpha
363	LDHA	43550	Hs.2795	H05914	Lactate dehydrogenase A
364-365	FOLR1	131839	Hs.73769	R24530; R24635	Folate receptor 1
366-367	TPI1	855749	Hs.83848	M10036; AA663983	Triosephosphate isomerase 1
368	KLK8	2514426	Hs.104570	AI963941	Kallikrein 8 (neurosin/ovasin)
200	CXCR4	79629	Hs.89414		Chemokine (C-X-C motif), receptor 4 (fusin)
369-370	KNSL1	825606	Hs.8878	AA504625; AA504719	Kinesin-like 1
371-372	H2AFO	488964	Hs.795	AA047260; AA057146	H2A histone family, member O
373-374	HLA-DRA	153411	Hs.76807	R47979; R48091	Major histocompatibility complex, class II, DR alpha
375	CRIP1	1323448	Hs.17409	AA873604	Cysteine-rich protein 1
376	PP	950700	Hs.184011	AA608572	pyrophosphatase (inorganic)
377-378	EST	666391		AA232895; AA232894	
379-381	SLC2A1	207358	Hs.169902	-K03195; H58873; H58872	Solute carrier family 2 (facilitated glucose transporter), member 1
382	EST	897770		AA598508	
383-385	HDGF	813673	Hs.89525	D16431; AA453749; AA453831	Hepatoma-derived growth factor (high-mobility group protein 1-like)
386	ASS	882522	Hs.160786	AA676466	Argininosuccinate synthetase
387-388	CLDN4	770388	Hs.5372	AA430665; AA427468	Claudin 4
389	PRAME	897956	Hs.30743	AA598817	preferentially expressed antigen in melanoma
390-391	PTPRF	897788	Hs.75216	Y00815; AA598513	Protein tyrosine phosphatase, receptor type, F
392-393	EYA2	741139	Hs.29279	AA402754; AA402207	Eyes absent (Drosophila) homolog

					2
394-396	MYCL1	138917	Hs.92137	M19720; R62813; R62862	v-myc myelocytomatosis viral oncogene homolog 1
397-399	STAT1	840691	Hs.21486	M97935; AA488075; AA486367	Signal transducer and activator of transcription 1
400-401	MTCH2	564492	Hs.279609	AA121668; AA121740	mitochondrial carrier homolog 2
402	HTR3A	435597	Hs.2142	AA703169	5-hydroxytryptamine (serotonin) receptor 3A
403-404	CCNE1	68950	Hs.9700	T54121; T54213	Cyclin E1
405	CDH6	739155	Hs.32963	AA421819	Cadherin 6, type 2, K- cadherin
406-408	PRKAG1	531028	Hs.3136	U42412; AA070495; AA070381	Protein kinase, AMP- activated, gamma 1 non-catalytic subunit
409	DEFB1	2403485	Hs.32949	AI769855	Defensin, beta 1
410-411	ARPC1B	626502	Hs.11538	AA188179; AA188155	Actin related protein 2/3 complex, subunit 1B (41 kD)
412-414	PRKCI	71622	Hs.1904	L33881; T57875; T57957	Protein kinase C, iota
415	GAPD	1610448	Hs.169476	AA991856	glyceraldehyde-3- phosphate dehydrogenase
416-417	C2	85497	Hs.2253	T71879; T71878	Complement Component C2
418-419	H2AFY	843075	Hs.75258	AA488627; AA486003	H2A histone family, member Y
420-421	TM4SF1	840567	Hs.3337	AA487893; AA488005	Transmembrane 4 superfamily member 1
422-423	GAPD	50117	Hs.169476	H16958; H16957	glyceraldehyde-3- phosphate dehydrogenase
424-426	IFITM3	809910	Hs.182241	X57352; AA464417; AA464416	interferon induced transmembrane protein 3 (1-8U)
427-428	GLDC	248261	Hs.27	N58494; N78083	Glycine dehydrogenase (decarboxylating; glycine decarboxylase, glycine cleavage system protein P)
429-430	CALU	144881	Hs.7753	R78586; R78585	Calumenin
431-432	HBA2	208764	Hs.272572	H63096; H63182	Hemoglobin, alpha 2
433	S100A11	810612	Hs.256290	AA464731	S100 calcium-binding protein A11 (calgizzarin)
434-436	LDHA	897567	Hs.2795	X02152; AA497029; AA489611	Lactate dehydrogenase A
437	UBE2C	769921	Hs.93002	AA430504	Ubiquitin-conjugating

					enzyme E2C
438-440	E2F3	304908	Hs.1189	D38550; N92519; W38841	E2F transcription factor 3
441-442	CDH1	251019	Hs.194657	Z13009; H97778	Cadherin 1, type 1, E-cadherin (epithelial)
443-444	PSME2	210405	Hs.179774	H65395; H65394	Proteasome (prosome, macropain) activator subunit 2 (PA28 beta)
445-447	BMP7	344430	Hs.170195	X51801; W73473; W73527	bone morphogenetic protein 7 (osteogenic protein 1)
448	TOP2A	825470		AA504348	topoisomerase (DNA) II alpha (170kD)
449-451	IL8	328692	Hs.624	M17017; W45324; W40283	interleukin 8
452-453	GRO1	324437	Hs.789	X54489; W46900	GRO1 oncogene (melanoma growth stimulating activity, alpha)
454-456	ALDH1A3	272686	Hs.75746	U07919; N32289; N44575	aldehyde dehydrogenase 1 family, member A3; Aldehyde dehydrogenase 6
457-459	MMP1	624924	Hs.83169	X54925; AA181875; AA186634	matrix metalloproteinase 1 (interstitial collagenase)
460-461	OSF-2	897910	Hs.136348	D13666; AA598653	osteoblast specific factor 2 (fasciclin I-like)
462-464	CDC25B	48398	Hs.153752	S78187; H14343; H14392	cell division cycle 25B; M-phase inducer phosphatase 2
465-467	FLNA	487418	Hs.195464	X53416; AA046721; AA046606	filamin A, alpha (actin-binding protein-280)
468-469	TFP12	726086	Hs.295944	AA399473; AA293402	tissue factor pathway inhibitor 2
470-472	FGF2	23073	Hs.284244	M27968; R38539; T75110	fibroblast growth factor 2 (basic)
473-475	CD44	713145	Hs.169610	X56794; AA283090; AA282906	CD44 antigen; extracellular matrix receptor-III=Hyaluronate receptor
476-477	DYT1	69046	Hs.19261	T54320; T53726	dystonia 1, torsion (autosomal dominant; torsin A)
478	UCHL1	878833	Hs.76118	AA670438	ubiquitin carboxyl-terminal esterase L1 (ubiquitin thiolesterase)
479-480	PLAU	1696513	Hs.77274	D00244; AI088434	plasminogen activator, urokinase
256	LDHA	43550	Hs.2795		lactate dehydrogenase

					A
481-483	PTGS2	147050	Hs.196384	U04636; R80217; R80322	cyclooxygenase-2; prostaglandin endoperoxide synthase-2
484-486	PRNP	682013	Hs.74621	M13899; AA256322; AA256449	prion protein
487-488	MT1X	297392	Hs.278462	N80129; W03653	metallothionein 1L, metallothionein 1X
489-490	UGB	81336	Hs.2240	T63761; T63800	uteroglobin
491-493	PBEF	594539	Hs.239138	U02020; AA169813; AA171651	pre-B-cell colony- enhancing factor
494-496	TXNRD1	789376	Hs.13046	X91247; AA464849; AA453335	thioredoxin reductase 1; GRIM-12
497-499	NT5	21655	Hs.153952	X55740; T65120; T65189	5' nucleotidase (CD73)
500-502	MT2A	590150	Hs.118786	J00271; AA156031; AA156201	metallothionein 2A
503	ZNF220	949928	Hs.82210	AA599173	zinc finger protein 220
504-506	AKT1	810331	Hs.71816	U97276; AA464152; AA464217	BPGF-1=bone-derived growth factor; v-akt murine thymoma viral oncogene homolog 1
507-509	PTEN	322160	Hs.10712	U92436; W37864; W37855	MMAC1=PTEN=Tum or suppressor gene at 10q23.3 that is Mutated in Multiple Advanced Cancers=Phosphatase and tensin homolog
510-512	UBL1	758495	Hs.81424	U83117; AA401634; AA401864	ubiquitin-homology domain protein PIC1
513-514	WNT2	302286	Hs.89791	N78828; W17194	wingless-type MMTV integration site family member 2
515-517	SFRP4	841282	Hs.105700	AF026692; AA487193; AA486838	frizzled related protein frpHE
518-520	RUNX1	263251	Hs.129914	D43968; H99599; H99598	AML1 Proto- oncogene
521-523	TAL1	71727	Hs.73828	X51990; T51236; T51350	T-cell acute lymphocytic leukemia 1
524-526	WAS	236282	Hs.2157	U12707; H61193; H62098	Wiskott-Aldrich syndrome protein
527-528	PCK1	713382	Hs.171834	X66363; AA283125	PCTAIRE 1 serine/threonine protein kinase
529	EBP	295986	Hs.75105	N67038	emopamil-binding protein (sterol

					isomerase)
530	SMC1L1	897997	Hs.211602	AA598887	SMC1 (structural maintenance of chromosomes 1, yeast)-like 1
531-532	ARAF1	207618	Hs.77183	H59758; H59757	v-raf murine sarcoma 3611 viral oncogene homolog 1
533	UBE1	898262	Hs.2055	AA598670	ubiquitin-activating enzyme E1
534-535	LOC51760	52226	Hs.26971	H23265; H23376	B/K protein
536-537	LRPAP1	842785	Hs.75140	AA486209; AA486313	low density lipoprotein-related protein-associated protein 1 (alpha-2-macroglobulin receptor-associated protein 1)
538-540	PSTPIP1	71434	Hs.129758	L07633; T47815; T47814	interferon-gamma IEF SSP 5111; Interferon gamma upregulated protein
541-542	IDH2	869375	Hs.5337	X69433; AA679907	isocitrate dehydrogenase 2 (NADP+), mitochondrial
543	SIAHBP1	854696	Hs.74562	AA630094	fuse-binding protein-interacting repressor
544	SLC25A11	878413	Hs.184877	AA670357	solute carrier family 25 (mitochondrial carrier; oxoglutarate carrier), member 11
545-547	LCN2	302127	Hs.204238	X99133; N79823; W38398	lipocalin 2 (oncogene 24p3)
548-550	TCEB2	52162	Hs.172772	L42856; H22966; H24146	Elongin B=RNA polymerase II transcription factor SIII p18 subunit
551-553	NM23H1	176482		X17620; H42520; H43520	nm23-H1=NDP kinase A=Nucleoside diphosphate kinase A
554-556	SCYB5	198699	Hs.89714	X78686; R95077; R95145	ENA78=chemokine
557-558	PAK2	231951	Hs.284275	U25975; H92785	hPAK65=SER/THR-protein kinase PAK-gamma =P21-activated kinase 3
559-561	S100A4	472180	Hs.81256	M80563; AA057375; AA036758	S100 calcium binding protein A4=Placental calcium binding protein=Calvasculin=mts1 PROTEIN=CAPL
562-564	CD83	564503	Hs.79197	Z11697; AA101749; AA101748	CD83=B-G antigen IgV domain homolog=B-cell

					activation protein=HB15
565-567	NCOA1	609445	Hs.74002	U59302; AA180462; AA179970	SRC-1=steroid receptor coactivator
568-570	RYBP	649654	Hs.7910	AF179286; AA216739; AA216519	Death effector domain-associated factor=Binds to Caspase 10 DED domain=Homolog of mouse RYBP repressor protein that interacts with Polycomb complex and YY1=YAF2 homolog=DEDAF=YAF2 homolog=MLNewGene3
571-573	ITGAE	665279	Hs.851	L25851; AA195282; AA195146	CD103 alpha=Integrin alpha-E
574-576	IL7	701422	Hs.72927	J04156; AA287945; AA288010	IL-7
577-579	CD36	243816	Hs.75613	M98399; N39161; N45238	CD36
580-582	PDGFRB	773439	Hs.76144	J03278; AA426020; AA428115	Platelet-derived growth factor receptor, beta polypeptide=fused to TEL in t(5;12)(q33;p13) chronic myelomonocytic leukemia
583-584	IL17R	842122	Hs.129751	U58917; AA634809	IL-17 receptor
585-586	HGF	1219612	Hs.809	X16323; AA687773	Hepatocyte growth factor (hepapoietin A; scatter factor)
587-588	BAD	1286754	Hs.76366	U66879; AA740876	BAD=bbc6=proapoptotic Bcl-2 homolog
589-591	ZNF173	755176	Hs.1287	U09825; AA421953; AA421952	acid finger protein
592-593	ZFP161	285742	Hs.156000	D89859; N64141	ZF5=POZ domain zinc finger protein
594-596	RGS16	470132	Hs.183601	U70426; AA029960; AA029959	A28-RGS14p=G protein signaling regulator
597-599	PPP1CB	485729	Hs.21537	X80910; AA040285; AA040284	PPP1CB=Protein phosphatase 1, catalytic subunit, beta isoform
600-602	GART	502761	Hs.82285	X54199; AA126256; AA126360	Phosphoribosylglycinate formyltransferase,

					phospho-ribosylglycinamide synthetase, phosphoribosylaminoimidazole synthetase
603-605	ENPP1	786041	Hs.11951	D12485; AA448639; AA448731	PC-1 = alkaline nucleotide pyrophosphatase
606-608	MMP13	786029	Hs.2936	X75308; AA448634; AA448726	MMP-13=Matrix metalloproteinase 13=CL-3=Collagenase 3
609-611	ILK	292313	Hs.6196	U40282; N62542; N79210	ILK=integrin-linked kinase
612-614	SCYA4	205633	Hs.75703	J04130; H62864; H62985	MIP-1 beta=SCAY2=G-26=HC21=pAT 744=LAG-1=Act-2=H400=SIS-gamma=chemokine
615-617	KDR	469345	Hs.12337	AF035121; AA027012; AA026831	Kinase insert domain receptor (a type III receptor tyrosine kinase)
618-620	IL18R1	755054	Hs.159301	U43672; AI821652; AI734039	IL-18 receptor 1=IL-1Rrp
621-623	PPP2R5A	41356	Hs.155079	L42373; R59165; R59164	phosphatase 2A B56-alpha (PP2A)
624-625	PTK2B	180298	Hs.20313	U43522; R85257	protein tyrosine kinase PYK2
626-628	MAP2K3	45641	Hs.180533	D87116; H08749; H08467	Dual specificity mitogen-activated protein kinase kinase 3
629-631	TNFR2R P	124034	Hs.117847	L04270; R02558; R02676	Lymphotoxin-Beta receptor precursor = Tumor necrosis factor receptor 2 related protein = Tumor necrosis factor C receptor
632-633	EST	739852	Hs.328687	AI821550; AA477842	ESTs, Moderately similar to ALU4_HUMAN ALU subfamily SB2 sequence contamination warning entry [H.sapiens]
634-635	EST	1862171	Hs.310541	AI053777; AI792563	ESTs
636	EST	1985026		AI251605	Unknown
637	EST	2002071	Hs.203960	AI249848	ESTs
638	EST	2047317		AI311297	Unknown
639	EST	2215752		AI567814	Unknown
640	EST	2217459		AI744181	Unknown
641	EST	2217834	Hs.328451	AI744330	EST, Weakly similar to PRPP_HUMAN

					salivary proline-rich protein II-1 [H.sapiens]
642	EST	2219300		AI745684	Unknown
643	EST	2220085	Hs.337231	AI798317	EST
644	EST	2220214		AI798385	Unknown
645	EST	2261174	Hs.185554	AI609326	EST
646	EST	2261169		AI609331	Unknown
647	EST	2292810	Hs.224732	AI871658	EST
648	EST	2292831	Hs.337311	AI871678	EST
649	EST	2549950		AI954130	Unknown
650	EST	2550130		AI953438	Unknown
651-652	FDFT1	25725	Hs.48876	R36960; R11842	farnesyl-diphosphate farnesyltransferase 1
653-654	NAGA	28985	Hs.75372	R40255; R14305	N-acetylgalactosaminidase, alpha-
655-656	SECRET	29054	Hs.116428	R40850; R14422	secretagogin
657-658	SLC9A1	30272	Hs.170222	R42414; R14692	solute carrier family 9 (sodium/hydrogen exchanger), isoform 1 (antiporter, Na ⁺ /H ⁺ , amiloride sensitive)
659	TUFM	34945	Hs.12084	R45183	Tu translation elongation factor, mitochondrial
660-661	MNAT1	38471	Hs.82380	R49475; R35961	menage a trois 1 (CAK assembly factor)
662-663	HARS	43021	Hs.77798	R60150; R60149	histidyl-tRNA synthetase
664-665	EIF4A1	46171	Hs.129673	H09590; H09589	eukaryotic translation initiation factor 4A, isoform 1
666-667	MPI	50359	Hs.75694	H17096; H17714	mannose phosphate isomerase
668-669	TAGLN2	45544	Hs.75725	H08564; H08563	transgelin 2
670-671	PON1	128143	Hs.1898	R12373; R09781	paraoxonase 1
672-673	EST	813444	Hs.178379	AA455945; AA455554	ESTs
674-675	GNB2	292213	Hs.91299	N68166; N80625	guanine nucleotide binding protein (G protein), beta polypeptide 2
676-677	KIAA0365	811029	Hs.190452	AA485383; AA485539	KIAA0365 gene product
678	NCSTN	199645	Hs.4788	R96527	nicastrin
679-681	ARHGEF6	687990	Hs.79307	D25304; AA236957; AA236617	KIAA0006
682	SFRS11	204755	Hs.11482	H56944	splicing factor, arginine/serine-rich 11
683-684	CUGBP1	25588	Hs.81248	R15111; R12181	CUG triplet repeat, RNA-binding protein 1
685-	GABRP	563598	Hs.70725	AA101225;	gamma-aminobutyric

686				AA102670	acid (GABA) A receptor, pi`
687-688	BMP6	768168	Hs.285671	AA424833; AA426586	bone morphogenetic protein 6
689-690	ATP7A	687820	Hs.606	AA236141; AA236635	ATPase, Cu ⁺⁺ transporting, alpha polypeptide (Menkes syndrome)
691-692	RBBP4	773599	Hs.16003	AA428365; AA429422	retinoblastoma-binding protein 4
693-694	POLR2A	740130	Hs.171880	AA479052; AA477535	polymerase (RNA) II (DNA directed) polypeptide A (220kD)
695-696	SMG1	785605	Hs.110613	AA449463; AA448998	PI-3-kinase-related kinase SMG-1
697-698	GTPBP1	826217	Hs.283677	U87964; AA521469	GP-1=putative G-protein
699-700	GS2NA	767994	Hs.183105	AA418821; AA418918	nuclear autoantigen
701-702	FLJ12442	32231	Hs.84753	R42815; R17469	hypothetical protein FLJ12442
703-704	KIAA0218	49404	Hs.75863	H15567; H15627	KIAA0218 gene product
705-706	KIAA0144	245015	Hs.8127	N52646; N72374	KIAA0144 gene product
707-708	FOXO1A	628955	Hs.170133	AA194765; AA194764	forkhead box O1A (rhabdomyosarcoma)
709	CSRP2	75254	Hs.10526	T59334	cysteine and glycine-rich protein 2
710-711	BRE	739993	Hs.80426	AA479741; AA477082	brain and reproductive organ-expressed (TNFRSF1A modulator)
712-713	RALY	825583	Hs.74111	AA504617; AA504712	RNA-binding protein (autoantigenic)
714-716	FGFR2	809464	Hs.282823	M87771; AA443093; AA456160	FGFR2=Fibroblast growth factor receptor 2
717-718	EST	242820	Hs.290870	H94050; H94131	ESTs, Weakly similar to I38588 reverse transcriptase homolog [H.sapiens]
719-720	PEF	137353	Hs.241531	R38031; R38117	PEF protein with a long N-terminal hydrophobic domain (peflin)
721-722	EST	265494	Hs.153445	N21309; N31244	Human mRNA for unknown product, partial cds
723-724	SAST	739625	Hs.227489	AA479623; AA477008	syntrophin associated serine/threonine kinase
725-726	EST	142499		R70037; R70084	Unknown
727-728	PLXNA2	303035	Hs.300622	N91580; W19130	plexin A2
729-730	EST	240694	Hs.167787	H78135; H78134	ESTs

731-732	APMCF1	198904	Hs.12152	R95693; R95692	APMCF1 protein
375	CALU	144881	Hs.7753		calumenin
733-734	PPY2	210873	Hs.20588	H67736; H66312	pancreatic polypeptide 2
735-736	CRB1	248485	Hs.169745	N59646; N78199	crumbs (Drosophila) homolog 1
737-738	FLJ21661	80095	Hs.334718	T63321; T63940	hypothetical protein FLJ21661
739-740	RAB3A	163579	Hs.27744	H14231; H14230	RAB3A, member RAS oncogene family
741-742	GCAT	307094	Hs.54609	N93695; W21033	glycine C-acetyltransferase (2-amino-3-ketobutyrate coenzyme A ligase)
743-744	P14L	809437	Hs.178576	AA458464; AA442976	similar to Bos taurus P14 protein
745-746	KIAA0008	357373	Hs.77695	W93717; W93568	KIAA0008 gene product
747-748	LOX	341680	Hs.102267	W60414; W60413	lysyl oxidase
749-750	PISD	343609	Hs.8128	W69460; W69544	phosphatidylserine decarboxylase
751-752	EST	341834	Hs.27278	W60647; W60905	ESTs, Weakly similar to A Chain A, Cyclophilin A [H.sapiens]
753-754	EST	809490	Hs.3737	AA443117; AA456181	ESTs
755-756	TMEPAI	809824	Hs.83883	AA455519; AA464401	transmembrane, prostate androgen induced RNA
757-758	ZNF211	346947	Hs.15110	W79396; W79316	zinc finger protein 211
759	LOC51605	810343	Hs.128791	AA464166	CGI-09 protein
760-761	MAPRE1	428223	Hs.234279	AA001749; AA001819	microtubule-associated protein, RP/EB family, member 1
762	FLJ10701	430068	Hs.146589	AA009830	hypothetical protein FLJ10701
763-764	DKFZP564C186	366353	Hs.134200	AA026278; AA026277	DKFZP564C186 protein
765	EST	810205	Hs.264606	AA464518	ESTs
766-767	F23149_1	428507	Hs.152894	AA004525; AA004607	hypothetical protein F23149_1
768-769	FLJ21940	810795	Hs.104916	AA458876; AA459066	hypothetical protein FLJ21940
770-771	FLJ22059	292223	Hs.13323	N62464; N79183	hypothetical protein FLJ22059
772-773	EST	241861	Hs.269020	H93115; H93243	ESTs
398	RGS1	361323	Hs.75256		regulator of G-protein signalling 1
774	PDE6A	361840	Hs.182240	W92514	phosphodiesterase 6A, cGMP-specific, rod, alpha
775-	IL1B	491763	Hs.126256	AA150507;	interleukin 1, beta

776				AA156711	
777	SF3B4	432564	Hs.25797	AA699361	splicing factor 3b, subunit 4, 49kD
778	EST	277627	Hs.348427	N45979	Human SH3 domain-containing protein SH3P18 mRNA, complete cds
779	TCF4	854581	Hs.326198	AA669136	transcription factor 4
780-781	RAB2L	741891	Hs.170160	AA401972; AA402117	RAB2, member RAS oncogene family-like
782-783	GOLGA1	34102	Hs.172647	R44140; R23687	golgi autoantigen, golgin subfamily a, 1
784	TNRC12	770000	Hs.306094	AA427519	trinucleotide repeat containing 12
785	CSNK1E	854138	Hs.79658	AA669272	casein kinase 1, epsilon
786-787	AFP	74537	Hs.155421	T59043; T59118	alpha-fetoprotein
788-789	COVA1	588822	Hs.155185	AA156560; AA157732	cytosolic ovarian carcinoma antigen 1
790-791	APEX	740907	Hs.73722	AA478273; AA478331	APEX nuclease (multifunctional DNA repair enzyme)
792-793	RBBP2	841655	Hs.76272	AA487492; AA487706	retinoblastoma-binding protein 2
794-796	GRO1	323238		M36820; W42723; W42812	Human cytokine (GRO-beta) mRNA; GRO2=GRO beta = MIP2 alpha = macrophage inflammatory protein-2 alpha = chemokine
797-799	WNT2	149373		X07876; H04382; H04408	wingless-type MMTV integration site family member 2
800	PTGS2	845477	Hs.196384	AA644211	cyclooxygenase-2; prostaglandin endoperoxide synthase-2
801-802	PRNP	470074	Hs.74621	AA029059; AA029163	prion protein
803-804	WNT5B	323636	Hs.306051	W44518; W44517	Homo sapiens mRNA for WNT5B, complete cds
805	CD72	1241854		AA714696	
806		897774		AA598510	adenine phosphoribosyltransferase
807-808		795893		AA460168 AA460768	protein phosphatase 1, regulatory (inhibitor) subunit 15A
809-810		825214		AA504113 AA504371	M-phase phosphoprotein 10
811-812		154720		R55220 R55219	ARD1 homolog, N-acetyltransferase (S. cerevisiae)
813-814		204214		H59204 H59203	CDC6 cell division cycle 6 homolog (S. cerevisiae)

815-816		815294		AA481547 AA481613	protein tyrosine phosphatase, receptor type, C-associated protein
817		825265		AA504204	polymerase (DNA directed), delta 3
818		2549467		AI952542	unknown EST
819		1056107		AA628360	putative cyclin G1 interacting protein
820-821		809515		AA454565 AA456458	pLK=homologue of Drosophila polo serine/threonine kinase
822	CMKBR6			U45984	CCR6=STRL22=chemokine receptor for MIP-3 alpha/LARC/Exodus on activated B cells