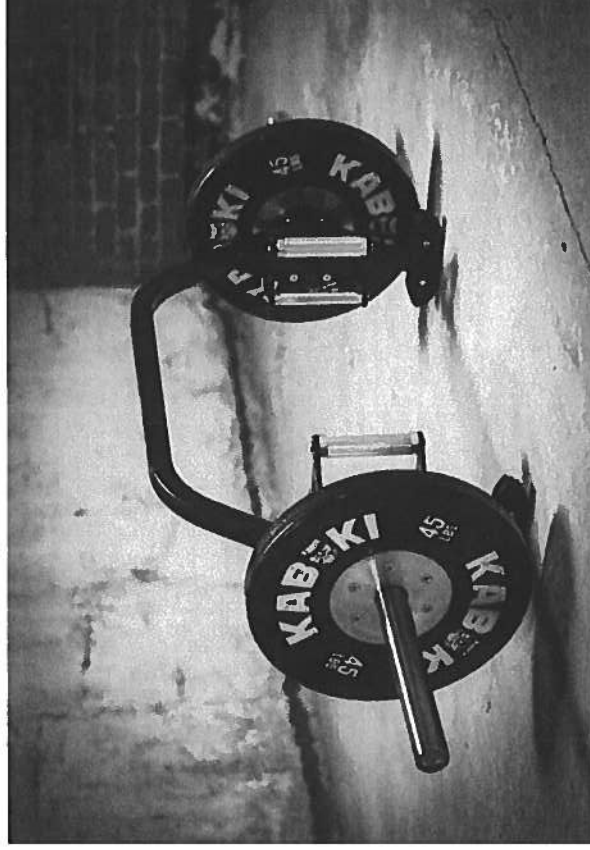


Claim Chart for Infringement of U.S. Patent No. 10,881,893 by Kabuki Strength

1. A barbell comprising:

The accused product is a barbell marketed by Kabuki Strength as the Trap Bar HD.



a central bar arranged between the first and the second bar ends, which central bar is fixedly connected to the first bar end and the second bar end, wherein the central bar is connected to the respective bar ends at respective angles relative the first longitudinal axis such that at least a mid-portion of the central bar is displaced from the longitudinal axis and protrudes a first distance from the first longitudinal axis

The Trap Bar HD includes a central bar arranged between and fixedly connected to the first and second bar ends. The central bar is connected at respective angles relative the first longitudinal axis such that at least a mid-portion of the central bar is displaced from longitudinal axis, and protrudes a first distance from the first longitudinal axis.



a first handle, fixedly connected to at least one of the first bar end or the central bar, which first handle is substantially perpendicularly arranged relative the first bar end and facing the first bar end,

The Trap Bar HD includes a first handle that is fixedly connected to the first bar end. The first handle is substantially perpendicularly arranged relative the first bar end, and faces the second bar end.



a second handle, fixedly connected to at least one of the second bar end or the central bar, which second handle is substantially perpendicularly arranged relative the second bar end and facing the second bar end,

The Trap Bar HD includes a second handle that is fixedly connected to the second bar end. The second handle is substantially perpendicularly arranged relative the second bar end, and faces the first bar end.



a first counterweight, fixedly connected to at least one of the first bar end or the central bar and protruding a second distance from the first longitudinal axis, substantially in an opposite direction relative the central bar,

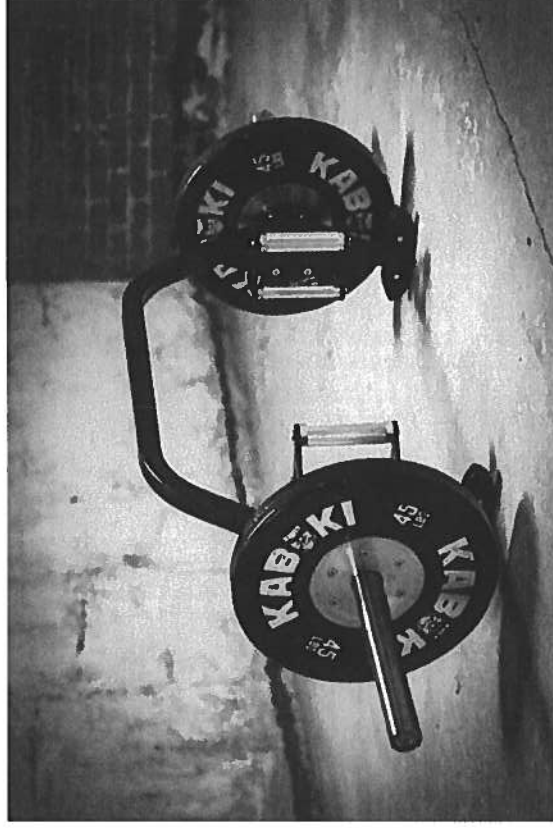
a second counterweight, fixedly connected to at least one of the second bar end or the central bar and protruding the second distance from the first longitudinal axis, substantially in an opposite direction relative the central bar,

Each end of the Trap Bar HD includes a counterweight connected to a bar end and protruding the second distance from the first longitudinal axis, substantially in an opposite direction relative the central bar.



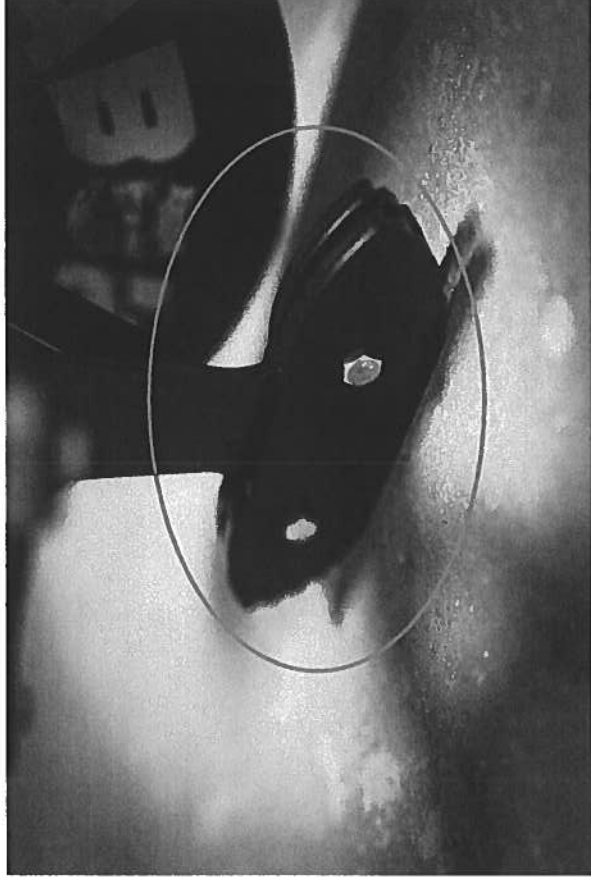
wherein the first and second counterweights and the second distance are selected so as to weight-balance the central bar,

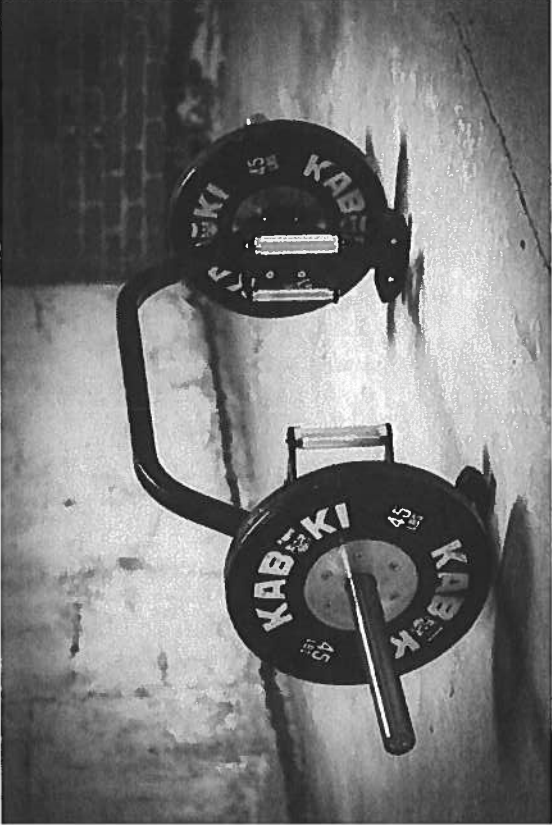
The placement of the counterweights weight-balance the central bar. Kabuki Strength specifically markets this balancing feature on its website.



wherein the first counterweight comprises a first foot member which protrudes a third distance from the first longitudinal axis, and the second counterweight comprises a second foot member which protrudes the third distance from the first longitudinal axis, wherein the third distance is chosen so as to exceed a standard radius of a standard weight,

Each of the Trap Bar HD's counterweights includes a foot member that protrudes from the first longitudinal access at a distance exceeding 22.5 millimeters (the radius of a standard weight as described at 3:27-30 of the '893 Patent).



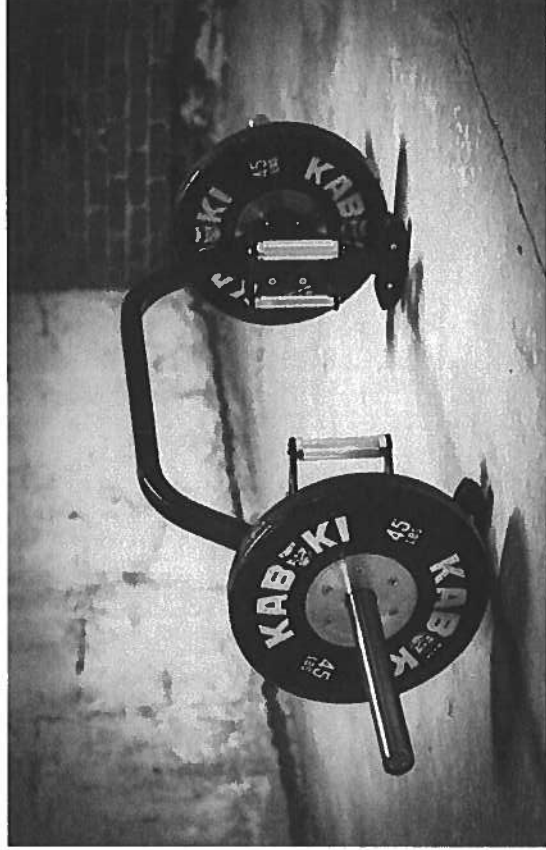
<p>wherein the first bar end, the second bar end and the central bar are disposed in a plane through which the first longitudinal axis extends and, in a using position of the barbell with the plane parallel to a surface and edges of the weights resting on the surface, respective distal ends of the feet members are located below the plane and are spaced from the plane by a fourth distance that is less than the standard radius of the standard weight to allow rotation of the barbell about the first longitudinal axis in the using position, and</p>	<p>The central bar and bar ends of the Trap Bar HD are disposed in a plane through which the first longitudinal axis extends. In a using position of the Trap Bar HD with that plane parallel to the surface, and with the edges of the weights resting on the surface, the respective distal ends of the feet members are located below the plane and spaced from it by a distance less than 225 millimeters. This allows for rotating the barbell about the first longitudinal axis in the using position, as demonstrated by an animation at https://store.kabukistrength.net/products/the-trap-bar#jack. Additional videos showing use of the Trap Bar HD in a manner that practices this claim limitation may be found at, e.g., https://garagegymreviews.com/kabuki-strength-trap-bar-review and https://www.youtube.com/watch?v=PA-drJqXjvcM.</p> 
---	--

wherein the third and fourth distances are set so that i) rotation of the barbell about the first longitudinal axis brings the distal ends of the feet members into contact with the surface, and ii) with the feet members in contact with the surface, the barbell is pivotable about locations of contact of the feet members with the surface to a position where the plane is perpendicular to the surface and the barbell is in a loading position with the edges of the weights displaced from the surface.

The third and fourth distances of the Trap Bar HD are set so that rotating the barbell about the first longitudinal axis brings the distal ends of the feet members into contact with the surface. When the feet members are in contact with the surface, the barbell is pivotable about locations of contact of the feet members with the surface, to a position where the plane is perpendicular to the surface and the barbell is in a loading position with the edges of the weights displaced from the surface. An animation at <https://store.kabukistrength.net/products/the-trap-bar/#jack>, and videos at, e.g., [https://garagegymreviews.com/kabuki-strength-trap-bar-review and https://www.youtube.com/watch?v=PA4rlqxiYcM](https://garagegymreviews.com/kabuki-strength-trap-bar-review-and-https://www.youtube.com/watch?v=PA4rlqxiYcM), demonstrate the Trap Bar HD being used in a manner that practices this claim limitation.



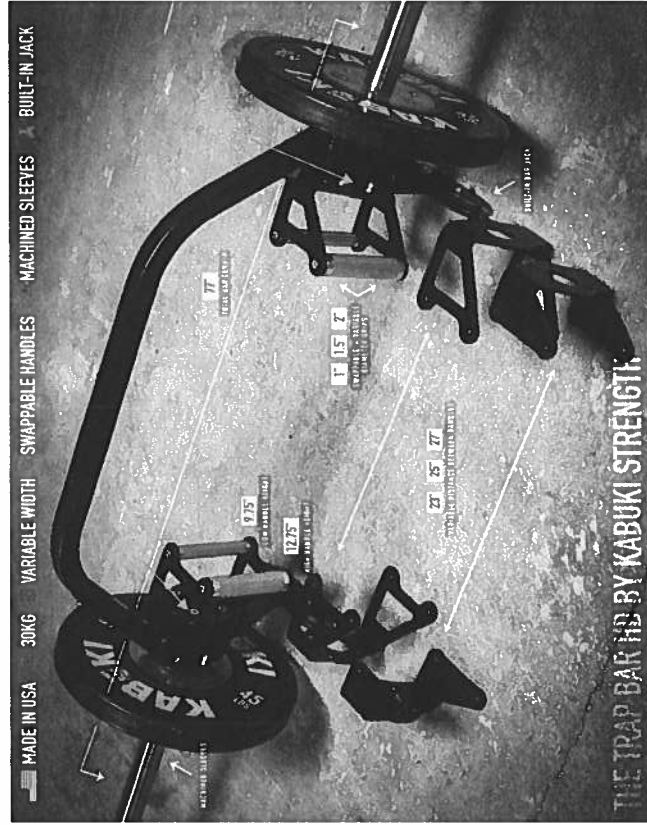
16. A barbell comprising:



The accused product is a barbell marketed by Kabuki Strength as the Trap Bar HD.

a first bar end and a second bar end each arranged for carrying one or more weights, the first bar end and the second bar end being substantially straight and extending along a first longitudinal axis

The Trap Bar HD includes a first bar end and a second bar end arranged for carrying weights. The bar ends are substantially straight and extend along a first longitudinal axis.



a central bar arranged between the first and the second bar ends, which central bar is fixedly connected to the first bar end and the second bar end, wherein the central bar is connected to the respective bar ends at respective angles relative to the first longitudinal axis such that at least a mid-portion of the central bar is displaced from longitudinal axis and protrudes a first distance from the first longitudinal axis.

The Trap Bar HD includes a central bar arranged between and fixedly connected to the first and second bar ends. The central bar is connected at respective angles relative to the first longitudinal axis such that at least a mid-portion of the central bar is displaced from longitudinal axis, and protrudes a first distance from the first longitudinal axis.



a second handle, fixedly connected to at least one of the second bar end or the central bar, which second handle is substantially perpendicularly arranged relative the second bar end and facing the second bar end,

The Trap Bar HD includes a second handle that is fixedly connected to the second bar end. The second handle is substantially perpendicularly arranged relative the second bar end, and faces the first bar end.



a first counterweight, fixedly connected to at least one of the first bar end or the central bar and protruding a second distance from the first longitudinal axis, substantially in an opposite direction relative the central bar,

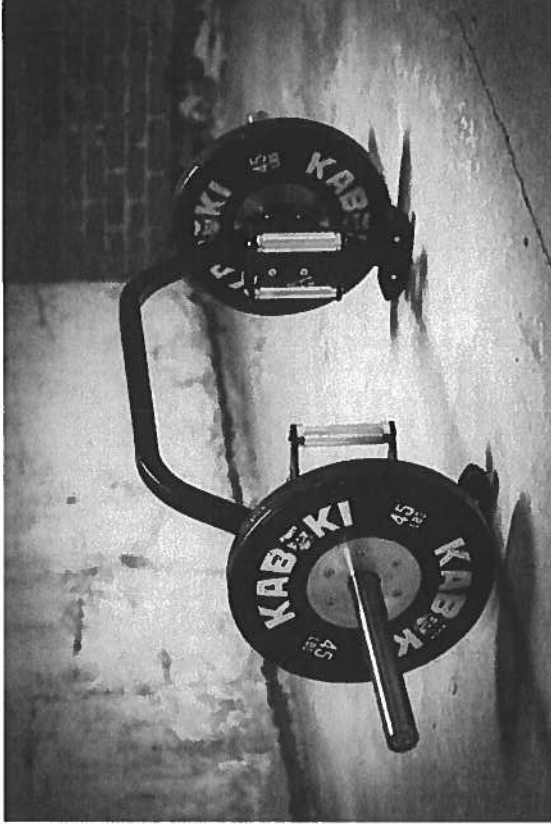
a second counterweight, fixedly connected to at least one of the second bar end or the central bar and protruding the second distance from the first longitudinal axis, substantially in an opposite direction relative the central bar,

Each end of the Trap Bar HD includes a counterweight connected to a bar end and protruding the second distance from the first longitudinal axis, substantially in an opposite direction relative the central bar.



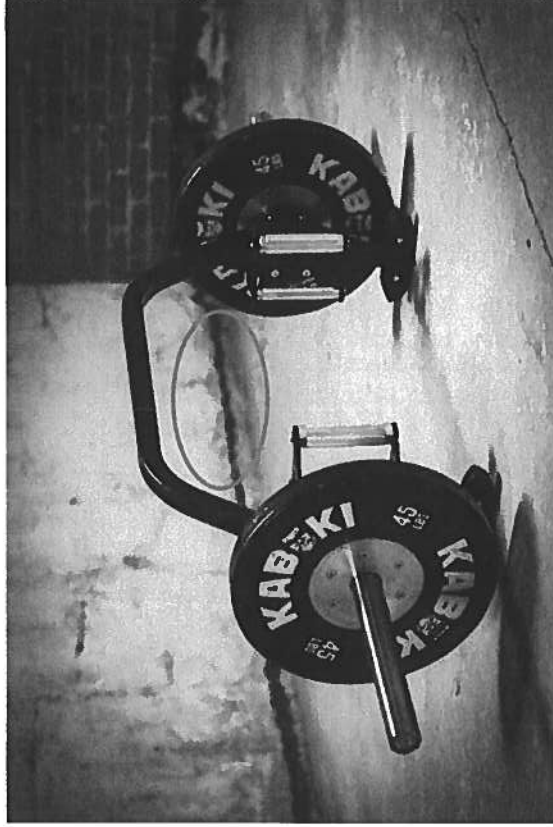
wherein the first and second counterweights and the second distance are selected so as to weight-balance the central bar,

The placement of the counterweights weight-balance the central bar. Kabuki Strength specifically markets this balancing feature on its website.



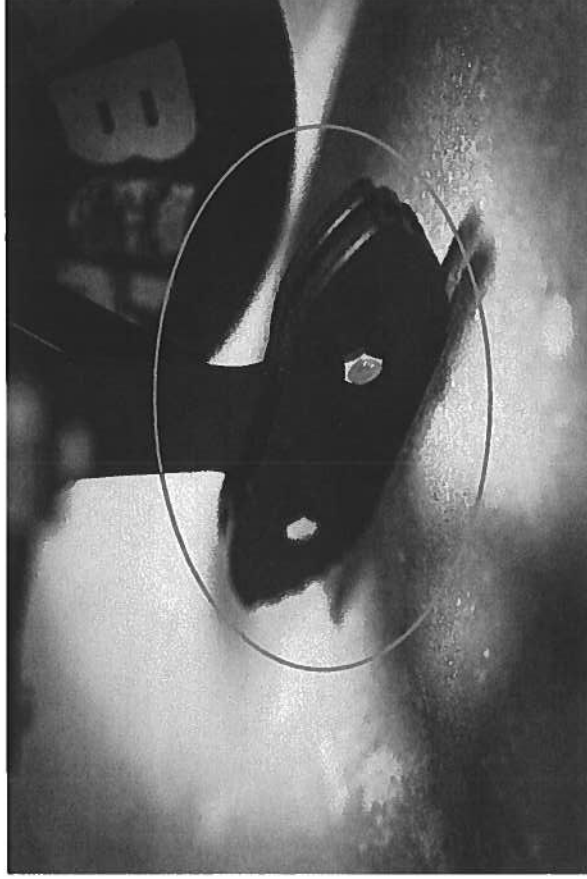
wherein the barbell is open along the first longitudinal axis opposite the portion of the central bar that is displaced from the first longitudinal axis,

The Trap Bar HD is open along the first longitudinal axis opposite the portion of the central bar that is displaced from that axis.



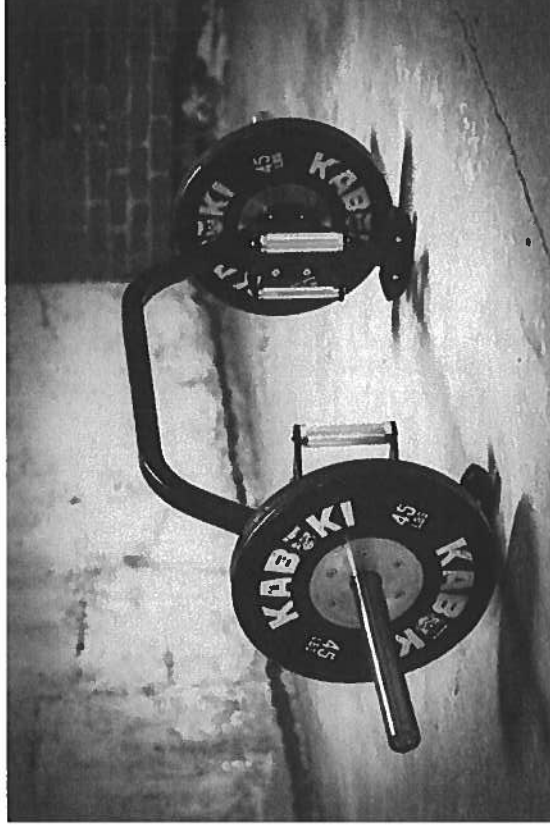
wherein the first counterweight comprises a first foot member which protrudes a third distance from the first longitudinal axis, and the second counterweight comprises a second foot member which protrudes the third distance from the first longitudinal axis, wherein the third distance is chosen so as to exceed a standard radius of a standard weight,

Each of the Trap Bar HD's counterweights includes a foot member that protrudes from the first longitudinal access at a distance exceeding 225 millimeters (the radius of a standard weight as described at 3:27-30 of the '903 Patent).



wherein the first bar end, the second bar end and the central bar are disposed in a plane through which the first longitudinal axis extends and, in a using position of the barbell with the plane parallel to a surface and edges of the weights resting on the surface, respective distal ends of the feet members are located below the plane and are spaced from the plane by a fourth distance that is less than the standard radius of the standard weight to allow rotation of the barbell about the first longitudinal axis in the using position, and

The central bar and bar ends of the Trap Bar HD are disposed in a plane through which the first longitudinal axis extends. In a using position of the Trap Bar HD with that plane parallel to the surface, and with the edges of the weights resting on the surface, the respective distal ends of the feet members are located below the plane and spaced from it by a distance less than 225 millimeters. This allows for rotating the barbell about the first longitudinal axis in the using position, as demonstrated by an animation at <https://store.kabukistrength.net/products/the-trap-bar#jack>. Additional videos showing use of the Trap Bar HD in a manner that practices this claim limitation may be found at, e.g., <https://garagegymreviews.com/kabuki-strength-trap-bar-review> and <https://www.youtube.com/watch?v=PA4rLqXlveM>.



wherein no part of the barbell contacts the surface in the using position.

In the using position, no part of the barbell contacts the surface. An animation at <https://store.kabukistrength.net/products/the-trap-bar#jack>, and videos at, e.g., <https://garagegymreviews.com/kabuki-strength-trap-bar-review> and <https://www.youtube.com/watch?v=PA6rJqxyvEM>, demonstrate the Trap Bar HID being used in a manner that practices this claim limitation.

