

MEMBERSHIP AND PRICING

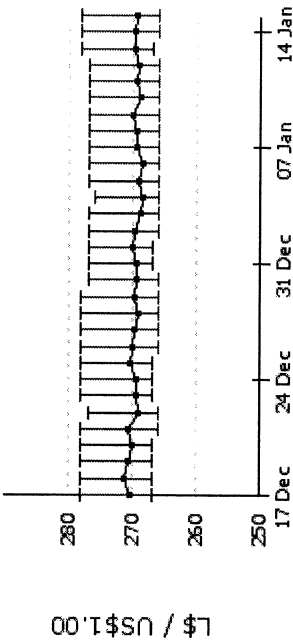
- IP Rights
- Memberships & Pricing
- Membership Plans
- Land Pricing & Use Fees

FAQs

LindeX Market Data

This page provides the most recent market data from the [LindeX Currency Exchange](#).

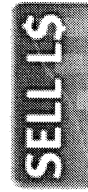
High/Low/Average Exchange Rates



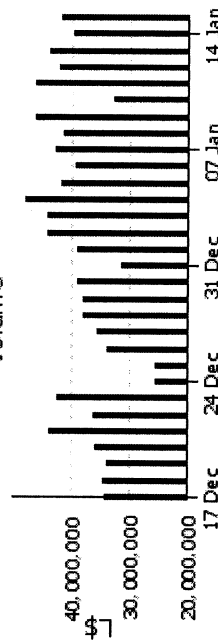
Daily Summary

Last Close Date 2007-01-15

Best buying rate: L\$266 / US\$1.00
 Best selling rate: L\$276 / US\$1.00
 Last trade: L\$266 / US\$1.00
 Last close: L\$267 / US\$1.00
 Change: -L\$1 / US\$1.00
 Today's volume: L\$15,677,608
 Today's open: L\$277 / US\$1.00
 Today's high: L\$277 / US\$1.00
 Today's low: L\$266 / US\$1.00
 Today's average: L\$269.4395 / US\$1.00



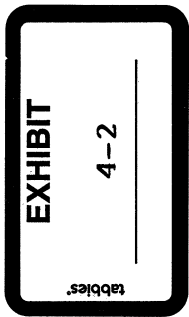
Volume



Show: 7 days 14 days 30 days 90 days all

Daily Market History - Rates are in L\$ per US\$1.00. Volume and quantities are in L\$.

Open	Close	Min	Avg	Max	Min	Avg
------	-------	-----	-----	-----	-----	-----



2007-01-06	268	267	39,396,680	266	268.52	277	31	6,122	865,000
2007-01-05	267	268	41,830,234	266	268.91	277	21	6,183	2,850,000
2007-01-04	267	267	47,910,353	266	268.55	276	17	7,069	1,436,760
2007-01-03	267	267	44,237,714	266	268.66	277	7	6,598	580,000
2007-01-02	267	267	44,006,124	266	269.72	277	3	7,745	779,266
2007-01-01	268	267	38,967,454	267	269.89	277	12	6,909	551,650
2006-12-31	267	268	31,352,034	267	269.23	277	1	5,670	337,472
2006-12-30	267	267	38,793,619	266	269.28	277	3	6,379	625,132
2006-12-29	268	267	37,880,624	266	269.84	278	3	8,320	574,500

Date	Rate	Volume	Rate	Rate	Rate	Qty	Qty	Max Qty
2007-01-15	268	41,644,903	266	269.33	278	50	6,996	523,855
2007-01-14	269	39,625,451	266	269.79	278	7	6,800	561,704
2007-01-13	268	43,699,578	267	269.62	278	6	6,979	541,855
2007-01-12	268	42,018,121	266	268.92	277	51	6,790	526,250
2007-01-11	267	46,155,542	266	269.30	277	17	7,814	500,443
2007-01-10	266	32,920,359	266	268.85	277	2	7,411	500,000
2007-01-09	267	46,074,863	266	269.92	277	1	8,813	1,435,229
2007-01-08	268	41,238,017	266	269.37	277	6	7,454	400,000
2007-01-07	277	42,842,262	266	269.22	277	15	6,822	700,000

Second Life | LindeX Market Data

2007-01-06	268	267	39,396,680	266	268.52	277	31	6,122	865,000
2007-01-05	267	268	41,830,234	266	268.91	277	21	6,183	2,850,000
2007-01-04	267	267	47,910,353	266	268.55	276	17	7,069	1,436,760
2007-01-03	267	267	44,237,714	266	268.66	277	7	6,598	580,000
2007-01-02	267	267	44,006,124	266	269.72	277	3	7,745	779,266
2007-01-01	268	267	38,967,454	267	269.89	277	12	6,909	551,650
2006-12-31	267	268	31,352,034	267	269.23	277	1	5,670	337,472
2006-12-30	267	267	38,793,619	266	269.28	277	3	6,379	625,132
2006-12-29	268	267	37,880,624	266	269.84	278	3	8,320	574,500

Second Life | LindeX Market Data

2006-12-21	268	267	43,756,649	266	270.57	278	1	6,756	1,439,412
2006-12-20	268	268	35,869,695	267	269.99	278	13	6,204	542,799
2006-12-19	269	268	33,679,745	267	270.54	278	15	6,758	470,669
2006-12-18	269	269	34,452,488	267	271.25	278	3	6,590	400,000
2006-12-17	269	269	34,252,148	267	270.36	278	3	5,931	279,757
2006-12-28	268	275	38,039,159	266	269.16	278	4	6,941	747,700
2006-12-27	277	275	35,661,819	266	269.62	278	6	6,575	443,864
2006-12-26	278	267	33,720,956	266	270.10	278	8	6,998	1,000,000
2006-12-25	268	267	25,560,501	267	270.16	278	11	6,020	600,000
2006-12-24	277	268	25,473,530	267	269.52	278	14	5,778	1,000,000
2006-12-23	277	268	42,267,485	267	269.41	278	22	7,920	782,830
2006-12-22	267	268	36,250,065	266	269.04	277	16	6,237	500,000
2006-12-21	268	267	43,756,649	266	270.57	278	1	6,756	1,439,412
2006-12-20	268	268	35,869,695	267	269.99	278	13	6,204	542,799
2006-12-19	269	268	33,679,745	267	270.54	278	15	6,758	470,669
2006-12-18	269	269	34,452,488	267	271.25	278	3	6,590	400,000
2006-12-17	269	269	34,252,148	267	270.36	278	3	5,931	279,757

©2007 Linden Research, Inc. | [We're Hiring!](#)