

**SECOND LIFE IS A 3D
ONLINE DIGITAL WORLD
IMAGINED, CREATED, & OWNED
BY ITS RESIDENTS.**

- ▶ BUY & SELL LINDEN DOLLARS
- ▶ OWN VIRTUAL LAND
- ▶ REFER FRIENDS



Welcome, Machievelli Xu!
[My Account](#) | [Log out](#)
 - Resident Links -

Search Second Life

Total Residents: **1,678,098**
 Logged In Last 60 Days: **676,325**
 Online Now: **12,147**
 US\$ Spent Last 24h: **\$653,625**
 LindeX Activity Last 24h: **\$96,944**

Headlines [read more news...](#)

Esquire
 Philip Rosedale: Esquire's
 Best and Brightest

Wired News
 Second Life Will Save
 Copyright

Your Second Life is Ready

"Residents of one of the Internet's most populous virtual worlds shop, attend class—even run businesses. Soon you may do the same."

Read the Popular Science [story on](#)

Build your virtual dream

Land in Second Life is your blank canvas. Build a dream home, a club, a shopping center, or plant some trees and construct a secluded retreat in the pristine virtual wilderness.

Second Life Videos

Check out resident-created Second Life videos at our [media page](#).



[Second Life from September, 2006.](#)

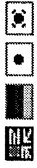
[Learn more about land ownership!](#)

[» Read the Current Newsletter](#)

Enter E-mail Address

SUBSCRIBE

[downloads](#) | [system requirements](#) | [privacy](#) | [community standards](#) | [terms of service](#) | [dmca](#) | [grid status](#) | [jobs](#) | [contact](#)



©2006 Linden Research, Inc.

Welcome, **Machievelli Xu!**
[My Account](#) | [Log out](#)

- Resident Links -

Search Second Life

WHAT IS SECOND LIFE? THE WORLD

- Create an Avatar
- Explore
- Meet People
- Own Virtual Land
- Have Fun

THE CREATIONS

- Create Anything
- Building
- Scripting

THE MARKETPLACE

- Economy
- Economic Statistics
- Index Market Data
- Business Opportunities
- Businesses on the Web
- IP Rights

MEMBERSHIPS & PRICING

- Membership Plans
- Land Pricing & Use Fees

FAQ

Memberships, Land, & Pricing

Your first **Basic account** is **FREE**, and includes access to events, shopping, building, scripting- everything you can do in Second Life. After your first free Basic Account, each Additional Basic Account (known in-world as an "alt" account) costs a one-time fee of \$9.95.

A **Premium Second Life account**, starting at \$9.95 a month, allows you to own land on which you can build, display, entertain and live.

- **Membership Plans**
Details on differences between account types.
- **JOIN NOW**
It's free to try, so why wait?

Acquiring Land:

Acquiring land in Second Life requires a Premium Account. From a tiny parcel to an entire island, the pricing structure is extremely flexible to suit any need or budget!

- **Land Pricing & Use Fees**
Detailed information on land pricing.
- **Land Information**
Find out all the ways to acquire and use your land!
- **Land Store**
Buy or reserve your own regions today!

Resident Referral

Tell your friends about Second Life.



Gift Certificate

Purchase a gift certificate now!



Islands

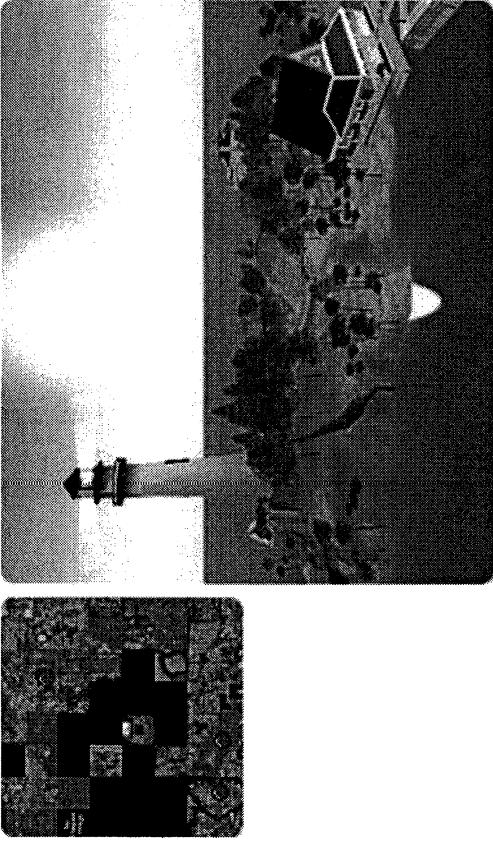
Buy your own island today!



Got Questions?

Call us! 1 (800) 961-6851
Monday thru Friday, 9am-6pm PST.





[downloads](#) | [system requirements](#) | [privacy](#) | [community standards](#) | [terms of service](#) | [dmca](#) | [grid status](#) | [jobs](#) | [contact](#)



©2006 Linden Research, Inc.

Welcome, **Machievelli Xui!**
My Account | Log out

- Resident Links -

Search Second Life

**WHAT IS SECOND LIFE?
THE WORLD**

- Create an Avatar
- Explore
- Meet People
- Own Virtual Land
- Have Fun

THE CREATIONS

- Create Anything
- Building
- Scripting

THE MARKETPLACE

- Economy
- Economic Statistics
- LindeX Market Data
- Business Opportunities
- Businesses on the Web
- IP Rights

MEMBERSHIPS & PRICING

- Membership Plans
- Land Pricing & Use Fees

FAQ

Land Pricing & Use Fees

The **Land Use Fee** (also known as a Tier Fee) is a monthly charge in addition to membership fees (i.e., US\$9.95/month Premium Membership). Land use fees are billed based on the peak amount of land held during your previous 30 day billing cycle. This includes land parcels held and land tiers donated to groups. The fee is tiered and discounted as you acquire more land. Peak usage is measured by the maximum amount of land you held -- for any length of time -- during your billing cycle. Go to [Land Use Fees](#) on your account page for further details.

Premium accounts are granted a 512 m2 bonus lease before land use fees are applied. The chart below shows the fees for all land you hold or tier you donate beyond the 512 m2 bonus.

Examples:

- You hold 512 m2 of land -- or donate 512 m2 of tier to a group. Your monthly land use fee is US\$0. You will need to buy the land, however.
- You hold 1024 m2 of land and donate 512 m2 to a group. Subtract your 512 m2 bonus lease, and your monthly land use fee is US\$8.
- Your total land holdings and group donations equal 4612 m2. You subtract the 512 m2 bonus lease and see that your billable square meters are 4100 m2. This amount is over the 4096 m2 tier level, so your monthly land use fee will be the next level: US\$40.

Note: Island billing is separate from land use fees.

Additional Land (over 512 sq meters)	(In square meters)	Monthly land use fee
1/128 Region	512 m2	US\$5
1/64 Region	1,024 m2	US\$8
1/32 Region	2,048 m2	US\$15

Resident Referral

Tell your friends about Second Life.



Gift Certificate

Purchase a gift certificate now!



Islands

Buy your own island today!



Got Questions?

Call us! 1 (800) 961-6851
Monday thru Friday, 9am-6pm PST.



1/16 Region	4,096 m2	US\$25
1/8 Region	8,192 m2	US\$40
1/4 Region	16,384 m2	US\$75
1/2 Region	32,768 m2	US\$125
Entire Region	65,536 m2	US\$195

[downloads](#) | [system requirements](#) | [privacy](#) | [community standards](#) | [terms of service](#) | [dmca](#) | [grid status](#) | [jobs](#) | [contact](#)



©2006 [Linden Research, Inc.](#)

Welcome, **Machieveli Xu!**
[My Account](#) | [Log out](#)

- Resident Links -

Search Second Life

COMMUNITY

- Search
- Forums
- Events
- Volunteer
- Education

CONNECTIONS

Official Linden Blog

- Media
- Music
- Fashion

- Resident Sites
- Newsletter
- Mailing Lists

COMMERCE

- Classifieds
- Land Information

- Land Pricing & Use Fees
- Land Auctions
- Land Store

LindeX Currency Exchange

- Buy L\$
- Sell L\$
- LindeX Market Data
- Transaction History

Economic Statistics

MY SECOND LIFE

Community: Land

Land in Second Life is your blank canvas; it is your choice what you do with it. Build a dream home, or a thunderdome. Create a dance club or a giant bathtub. Develop a small shop or a gigantic shopping center. Or plant some trees and construct a secluded retreat in the pristine virtual wilderness.

Virtual Land:

- **Get Land Now**
Find out how to get your hands on your very own piece of virtual property.
- **Land Pricing & Use Fees**
Find out what it costs to own land for yourself or a group.
- **Land Auctions**
A listing of virtual land parcels currently up for auction -- Bid Now!
- **Land Store**
Buy or reserve entire regions of land at our new Land Store!
- **How to Use Land**
How to get the most out of your virtual property.
- **Group Land**
The benefits offered by group-owned land.
- **Land Rental**
Need a large parcel for a special event? Find out about how to rent land from Linden Lab.

Friends Online

Friends Online has been temporarily disabled.

Resident Referral

Tell your friends about Second Life.



Gift Certificate

Purchase a gift certificate now!



Islands

Buy your own island today!



My Account

Friends Online

Feature Voting

Refer-A-Friend

Partners

SUPPORT

Downloads

Police Blotter

Knowledgebase

Known Issues

Got Questions?

Call us! 1 (800) 961-6851

Monday thru Friday, 9am-6pm PST.



[downloads](#) | [system requirements](#) | [privacy](#) | [community standards](#) | [terms of service](#) | [dmca](#) | [grid status](#) | [jobs](#) | [contact](#)



©2006 Linden Research, Inc.

Welcome, **Machievelli Xu!**
My Account | Log out

- Resident Links -

Search Second Life

COMMUNITY

- Search
- Forums
- Events
- Volunteer
- Education

CONNECTIONS

Official Linden Blog

- Media
- Music
- Fashion

Resident Sites

- Newsletter
- Mailing Lists

COMMERCE

Classifieds

Land Information

- Land Pricing & Use Fees
- Land Auctions
- Land Store

LindeX Currency Exchange

- Buy L\$
- Sell L\$
- LindeX Market Data
- Transaction History

Economic Statistics

MY SECOND LIFE

Auctions

Welcome to the Second Life auction block. The listings below let you know what land is currently on offer, and new auctions are added frequently.

How do the auctions work?

Just click on a parcel link below and it will show you more detailed information (including a SLurl.location). Once you find the parcel you like, you are ready to bid on the auction. Then bid the maximum amount you wish to pay for the parcel and the auction will bid for you until you reach the maximum bid amount you entered.

Within 24 hours of the auction's end, your account will be charged accordingly, your tier will be increased if necessary, and the land will be assigned to you in-world. That's the whole process, simple and easy!

We recommend you read the Auction FAQs carefully, as they have more detailed information. You can also view completed auctions for recently completed land auctions.

US\$ Parcels

The following Second Life auctions are denominated in **US Dollars (US\$)** - make sure you know what you're bidding with before you place the bid!

Item	Time Left	Price
Mullett (88,84) PG 18832m	7h 19m	US\$504.00
Pak (188,69) Mature 12208m	7h 34m	US\$402.00

Auction FAQ

Frequently asked questions about how land works in Second Life.



Islands

Buy your own island today!



My Account	Taeniatum (12,236) Mature 5120m	8h 4m	US\$201.00
Friends Online	Velox (62,155) Mature 11136m	8h 34m	US\$323.00
Feature Voting	Alta (56,161) Mature 4608m	1d 5h 34m	US\$131.00
Refer-A-Friend	Atropos (32,192) Mature 8192m	1d 6h 34m	US\$250.00
Partners	Samia (118,220) Mature 4576m	2d 7h 19m	US\$76.00

SUPPORT

- Downloads
- Police Blotter
- Knowledgebase
- Known Issues

L\$ Parcels

The following Second Life auctions are denominated in **Linden Dollars (L\$)** - make sure you know what you're bidding with before you place the bid!

Item	Time Left	Price
Honister (62,238) Mature 1008m	7h 49m	L\$9,010
Taeniatum (247,180) Mature 2048m	8h 19m	L\$17,442
Kiuek (32,32) Mature 4096m	8h 49m	L\$32,688
No (224,65) Mature 3584m	9h 4m	L\$27,710
Telea (188,199) Mature 4096m	9h 19m	L\$32,688
Gualala (224,130) Mature 1984m	9h 34m	L\$27,230
Achiya (136,209) Mature 1536m	1d 5h 19m	L\$12,010
Nogojiri (240,23) Mature 1920m	1d 5h 49m	L\$15,010
Dotoorak (136,193) Mature 1536m	1d 6h 4m	L\$12,210
Afton (184,22) PG 1536m	1d 6h 19m	L\$6,600
Velox (232,19) Mature 1536m	1d 6h 49m	L\$12,210
Vari (241,94) PG 976m	1d 7h 4m	L\$5,121
Jessie (97,39) Mature 1024m	1d 7h 19m	L\$20,010
Mieto (18,160) Mature 1024m	1d 7h 34m	L\$7,960
Bam (17,176) Mature 1024m	1d 7h 49m	L\$9,000
Moran (244,181) Mature 576m	1d 8h 4m	L\$5,210
Morrison (42,79) Mature 1536m	2d 5h 19m	L\$6,600
Scenic Hills (16,86) Mature 1536m	2d 5h 34m	L\$6,600

Minoa (230,13) PG 1456m	2d 5h 49m	L\$6,200
Skegemog (173,94) PG 4096m	2d 6h 4m	L\$17,600
Goodelli (44,107) Mature 1024m	2d 6h 19m	L\$4,400
Cranberry (16,241) Mature 1024m	2d 6h 34m	L\$4,400
Uli (55,8) PG 576m	2d 6h 49m	L\$2,400
Onnuri (48,73) Mature 1024m	2d 7h 4m	L\$4,400
Humuli (150,240) Mature 1408m	2d 7h 34m	L\$6,000



[downloads](#) | [system requirements](#) | [privacy](#) | [community standards](#) | [terms of service](#) | [dmca](#) | [grid status](#) | [jobs](#) | [contact](#)

©2006 [Linden Research, Inc.](#)

Welcome, **Machievelli Xu!**
[My Account](#) | [Log out](#)

- Resident Links -

Search Second Life

COMMUNITY

[Search](#)

[Forums](#)

[Events](#)

[Volunteer](#)

[Education](#)

CONNECTIONS

Official Linden Blog

[Media](#)

[Music](#)

[Fashion](#)

[Resident Sites](#)

[Newsletter](#)

[Mailing Lists](#)

COMMERCE

[Classifieds](#)

[Land Information](#)

- [Land Pricing & Use Fees](#)

- [Land Auctions](#)

- [Land Store](#)

[LindeX Currency Exchange](#)

- [Buy L\\$](#)

- [Sell L\\$](#)

- [LindeX Market Data](#)

- [Transaction History](#)

[Economic Statistics](#)

MY SECOND LIFE

Auction FAQ

Here's some additional information about Second Life auctions:

- [Second Life Auctions and "My Account"](#)
- [Bidding and Winning](#)
- [Winning and Paying](#)
- [Collecting Your New Land](#)
- [Resolving Auction Problems](#)

Second Life Auctions and "My Account"

Can anyone in Second Life buy land in the auctions?

No, only residents with Premium memberships are eligible to purchase land in Second Life.

Does the land I win in auction count against my land allocation?

Yes. Before you bid, be sure you are comfortable with paying any additional monthly fee ("tiering up") that might be triggered. You can review your land allotment by going to [Your Account](#).

Can I bid on land if it would put me in a higher land tier?

Yes, you will automatically be assigned to the tier when you win and successfully pay for the auction.

Can I bid with L\$ that I don't have?

No, the auction program checks your account to make sure you have adequate L\$ to cover your bid.

Bidding and Winning

Where are the auctions located?

The auctions are located at the [Second Life Auction House](#).

My Account

Friends Online

Feature Voting

Refer-A-Friend

Partners

SUPPORT

Downloads

Police Blotter

Knowledgebase

Known Issues

Where else can I see the parcels about to be auctioned?

When you are in Second Life, you can click on the "Find" button, select "Land Sales", check the "Auction" box and select "Search". You can also see land for auction by clicking on the "Map" button and selecting "Land for Sale". The land set up for auction appears as light blue. The map includes land that is planned for auction as well as those parcels currently on the block.

How much can I modify the land after I win it in an auction? All land in SL can be modified within 4 meters from its original shape unless otherwise specified. Make sure the parcel works for you within this limit before you bid.

How does "Maximum Bid" work?

When you enter a bid significantly higher than the current high bid, then the system will automatically bid for you up to the point of your maximum bid. This makes it less necessary to be online at the time the auction ends. The amount of the bid will be the minimum needed to outbid competing bidders. For example, if the current high bid is US\$50, and you bid US\$100, then a bid of \$51 will be automatically placed for you. If someone else bids US\$75, then a bid of \$US76 will be placed for you - and so on. If someone bids \$101, then an email will be generated to you that you have been outbid.

What if I want to change my maximum bid?

You can increase this bid at a later time whether or not someone else has outbid you. You can't decrease a maximum bid.

Is the bidding extended if someone bids just before the deadline?

No, the bidding is no longer extended by last minute bids. You can prevent much of the unwanted sniping by using the maximum bid feature.

How will I know if I won?

You will be notified by email so make sure your email address is up to date in [Your Account](#).

Is the auction legal outside the United States?

No matter where you live, Second Life insists that your transactions comply with the laws of the countries where you reside. We can't give you legal advice about your particular transaction - users are responsible for ensuring that their transactions are lawful in their country. Therefore, to avoid the potential for legal difficulties, Second Life strongly suggests that users educate themselves about the laws of their own country.

Will the closing time for an auction ever be delayed?

If the website is generally inaccessible, preventing people from participating in an auction, Linden may delay the closing time of auctions until at least two hours after access is restored. In some cases, where

auctions have closed but access to the auction site was unavailable, Linden may re-open closed auctions.

What else should I know?

Before submitting a bid, please remember that you automatically enter into a legally binding contract to purchase the item from the seller if you win the auction.

Winning and Paying**How soon will my account be debited after I win?**

Auctions are credited immediately upon closing, so be sure you have your payment source in order before the auction closes.

What if I want to use a different credit card?

You can change your active credit card at "Your Account". All subsequent charges, including subscription charges, will go against that card until you change it again.

What if no one bids on a parcel?

The land will be re-auctioned. If it fails to sell again, Linden Lab may list it for sale.

What if I want to close my auction sooner?

If you want to close your auction sooner, go to the auction page and click on the "Pay Now" button to close your auction as soon as it has been completed.

Collecting Your New Land**How will I know when I can take possession of the land?**

Unless there is a problem with billing, winners of auctions will be assigned the land within 24 hours.

How soon do I have to buy the land I won in the auction?

The land will be assigned to you as soon as the auction closes and billing has run. This may include an increase in land tier.

How do I take possession?

The parcel has already been assigned to you in world once the auction ends and the billing has run.

Is it possible to avoid tiering up by releasing other land before confirming a new higher tier?

Generally you will have up to 24 hours to make arrangements concerning

tier. You should make those arrangements once the auctions ends and you are notified.

Resolving Auction Problems

What if I win an auction but realize I've made a mistake?

Please send an email to land@secondlife.com with all auction questions. If you are unable or unwilling to pay for land bought in an auction, then you will be charged a restocking fee of US\$100 (L\$8000 for \$L auctions). Please note that more than 2 auction defaults may result in a loss of bidding status.

What happens if the winner doesn't pay for the parcel?

If you fail billing on the auction you account will go into delinquency, just as if you failed a membership or land tier billing. If you fail billing for 7 days the account will go on hold. After 30 days your account will be cancelled and your land reclaimed. You should contact support if this occurs.

The second highest bidder has the option of buying it for their highest bid. If the second bidder refuses the option, then the parcel will be auctioned again.

Who do I contact if I have a problem?

You should email land@lindenlab.com.

[downloads](#) | [system requirements](#) | [privacy](#) | [community standards](#) | [terms of service](#) | [dmca](#) | [grid status](#) | [jobs](#) | [contact](#)



©2006 Linden Research, Inc.

- Buy L\$
- Sell L\$
- Lindex Market Data
- Transaction History

Economic Statistics

MY SECOND LIFE

Auction Details

Mullett (88,84) PG 18832m

Current Bid: **US\$ 504.00**

Time Left: **7 hours 19 mins**

Ends: 2006-11-28 17:00:00

History: 21 bids

High Identity Protected

Bidder:

Place a Bid:

Current Bid: US\$ 504.00

Your maximum bid: **US\$** **Place Bid**

(Enter **505.00** or more)

Second Life | Auction Details

- My Account
- Friends Online
- Feature Voting
- Refer-A-Friend
- Partners
- SUPPORT**
- Downloads
- Police Blotter
- Knowledgebase
- Known Issues

[downloads](#) | [system requirements](#) | [privacy](#) | [community standards](#) | [terms of service](#) | [dmca](#) | [grid status](#) | [jobs](#) | [contact](#)



© 2006 Linden Research, Inc.

Welcome, **Machieveli Xui!**
[My Account](#) | [Log out](#)

- Resident Links -

[Search Second Life](#)

COMMUNITY

- [Search](#)
- [Forums](#)
- [Events](#)
- [Volunteer](#)
- [Education](#)

CONNECTIONS

Official Linden Blog

- [Media](#)
- [Music](#)
- [Fashion](#)
- [Resident Sites](#)
- [Newsletter](#)
- [Mailing Lists](#)

COMMERCE

- [Classifieds](#)
- [Land Information](#)

- [Land Pricing & Use Fees](#)
- [Land Auctions](#)
- [Land Store](#)

LindeX Currency Exchange

- [Buy L\\$](#)
- [Sell L\\$](#)
- [LindeX Market Data](#)
- [Transaction History](#)
- [Economic Statistics](#)

MY SECOND LIFE

Auction Bid

Mullett (88,84) PG 18832m

The following must be corrected before continuing:

- Your maximum bid - Your bid must be at least US\$505.00.

Place a Bid

Current bid: US\$504.00

Your maximum bid: US\$ (Enter 505.00 or more)

Bid carefully! The winning bid does not include monthly fees that may be triggered by owning this parcel. Please review [Your Account](#) before bidding to determine the possible effect on your monthly charge. If the additional land puts you in a higher land tier, you must be willing to pay a higher monthly charge or release other land.

Before submitting a bid, please remember that you automatically enter into a legally binding contract to purchase the item from the seller if you win the auction.

No matter where you live, Second Life insists that your transactions comply with the laws of the countries where you reside. We can't give you legal advice about your particular transaction - users are responsible for ensuring that their transactions are lawful in their country. Therefore, to avoid the potential for legal difficulties, Second Life strongly suggests that users educate themselves about the laws of their own country.

If you win, you may be charged for the entire bid amount **immediately**

Auction FAQ

Frequently asked questions about how land works in Second Life.

at the end of the auction. Make sure you have available credit on the credit card listed in [Your Account](#). You can update your credit card info at any time.

For US\$ auctions, your land will be set for transfer to you within 24 hours. You will be notified via email.

- [My Account](#)
- [Friends Online](#)
- [Feature Voting](#)
- [Refer-A-Friend](#)
- [Partners](#)
- SUPPORT**
- [Downloads](#)
- [Police Blotter](#)
- [Knowledgebase](#)
- [Known Issues](#)

[downloads](#) | [system requirements](#) | [privacy](#) | [community standards](#) | [terms of service](#) | [dmca](#) | [grid status](#) | [jobs](#) | [contact](#)



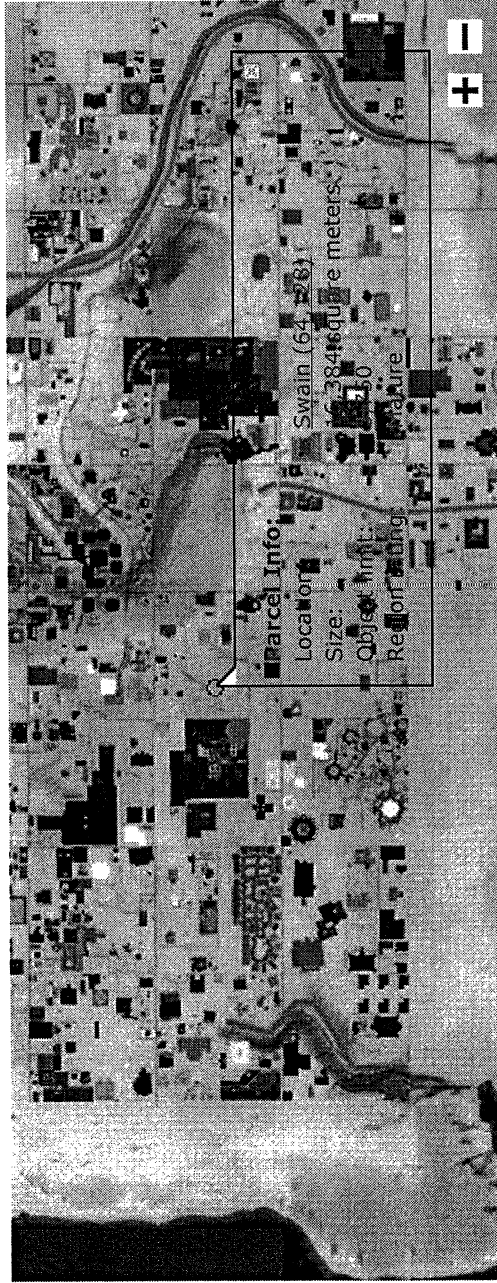
©2006 Linden Research, Inc.

- Buy L\$
- Sell L\$
- Index Market Data
- Transaction History

Economic Statistics *NEW*
MY SECOND LIFE

Auction Details

Swain (64,128) 16384m Mature



Current Bid: **US\$ 261.00**

Time Left: **6 hours 32 mins**

Ends: 2006-10-08 18:30:00

History: [2 bids](#)

High Bidder: Identity Protected

Place a Bid:

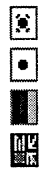
Current Bid: US\$ 261.00

Your maximum bid: **US\$** **Place Bid**

(Enter **262.00** or more)

- My Account
- Friends Online
- Feature Voting
- Refer-A-Friend
- Partners
- SUPPORT**
- Downloads
- Police Blotter
- Knowledgebase
- Known Issues

[downloads](#) | [system requirements](#) | [privacy](#) | [community standards](#) | [terms of service](#) | [dmca](#) | [grid status](#) | [jobs](#) | [contact](#)



Welcome, **Machieveli Xu!**
[My Account](#) | [Log out](#)

- Resident Links -

[Search Second Life](#)

WHAT IS SECOND LIFE?

The World

- Create an Avatar
 - Explore
 - Meet People
 - Own Virtual Land
 - Have Fun
- The Creations

- Create Anything
- Building
- Scripting

The Marketplace

- Economy
- Economy Graphs
- Economic Statistics
- LindeX Market Data
- Business Opportunities
- Businesses on the Web
- IP Rights

Memberships & Pricing

- Membership Plans
- Land Pricing & Use Fees

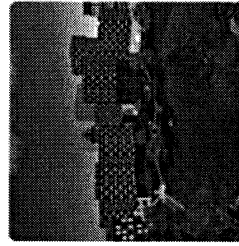
FAQs

Own Virtual Land

Owning land in Second Life allows you to build, display, and store your virtual creations, as well as host events and businesses.

Become a part of history by purchasing land and developing your own piece of Second Life. The Pricing and Fees are simple; you pay \$9.95 a month plus a Land Use Fee proportional to the amount of land you own.

Whether it's a modest nook for a relaxing cottage, or an entire island to build your dream amusement park, land is for everyone.



Resident Referral

Tell your friends about Second Life.



Islands

Buy your own island today!



Got Questions?

Call us! 1 (800) 961-6851
Monday thru Friday, 9am-6pm PST.



[downloads](#) | [system requirements](#) | [privacy](#) | [community standards](#) | [terms of service](#) | [dmca](#) | [trademark usage](#) | [grid status](#) | [contact](#)



©2007 Linden Research, Inc. | [We're Hiring!](#)

Welcome, **Machievellii Xui**
[My Account](#) | [Log out](#)

- Resident Links -

Search Second Life

COMMUNITY

- Search
- Forums
- Events
- Volunteer

CONNECTIONS

Official Linden Blog

- Media
- Music
- Fashion

- Resident Sites
- Newsletter
- Mailing Lists

COMMERCE

Classifieds

Land Information

- Land Pricing & Use Fees
- Land Auctions
- Land Store

LindeX Currency Exchange

- Buy L\$
 - Sell L\$
 - Market Data
 - Transaction History
 - Fees
 - Billing and Trading Limits
- Economic Statistics

Land: How To

Owning land allows you to control land. You can prevent others from visiting or building there, change the shape of the land, subdivide and sell it, and much more. Find out how to use all of the different land tools here.

About Land Tool

To access the About Land tool and learn how to use your land, simply stand on a parcel and right click on the land itself and select About Land from the pie menu that appears, which will open the tool. There are five different tools in the About Land tool, outlined below:

General Tab:

Includes all of the general information about the land, including its Name, Description, Owner name, Group name, etc. Also, in the General Tab is the *For Sale* function, where you can deed and sell your land. Please note the description you enter is also the description that appears when you list your land on the Search menu. You can select one of your groups to have potential access on your land by clicking on the *Select* button. You can activate the access on the *Access* tab. If you want to contribute or deed land to a group but you are only a member, not an officer, then select the group and check the *Allow Deed to Group* button.

If you are an officer in a group and want to deed land to a group, select the group and check the *Allow Deed to Group* button and click the *Deed* button. If you want to contribute the same amount of land allocation with the land, then also select the box *Owner Makes Contribution With Deed* and click the *Deed* button. To sell land, enter the sales price and select the box *Sell for L\$*. If you want to set it for sale for a particular resident then click the *Select* button and select that name by entering part of the name and clicking the *Search* button, selecting the name and clicking on the *OK*

MY SECOND LIFE

- My Account
- Friends Online
- Feature Voting
- Refer-A-Friend
- Partners

SUPPORT

- Downloads
- Police Blotter
- Knowledge Base
- Known Issues

button.

Objects Tab:

This tab includes information on how many prim-objects are allowed on your land and how many are currently on the parcel. The simulator object usage number may be larger since it includes all the parcels you own on the sim.

The *Return Objects* button allows you to return either all of the objects owned by the parcel owner, set to the group selected on the General tab, or owned by others. If you click on *Return Objects*, the objects about to be returned will be highlighted and you will see be asked if you are sure you want to return the selected objects.

You can also use *Autoreturn* to return anyone else's objects and choose the amount of time they can stay there until after they are returned. If you don't want to return others' objects, then set this to 0.

Options Tab:

This is the place to set the status of your land and determine what types of behavior will be acceptable or prohibited. Each option is outlined below:

- **Create/Edit Objects:** If checked, allows for objects to be created and edited on the selected land by others. The owner can create objects no matter what.
- **Safe (no damage):** If checked, sets the land to "Safe" so no damage can be done to those visiting the land.
- **Landmark:** Allows residents to save the land as a landmark.
- **Local Sound:** Checking this box prevents audio from entering or leaving the parcel.
- **Show in Find Places (L\$30/week):** If checked, you will be charged L\$30 a week in order to be listed in the "Find Places" search. If you select this feature, be sure to also select the category you want your land to be listed under (Store, Game, Homestead, etc).
- **Edit Land:** If checked, anyone can terraform your land. Since the owner can terraform even when this is unchecked, it's best to leave it unchecked.

- **Fly:** If checked, residents can fly on your land. If unchecked, they can fly into and over your land but they can't start to fly while there.
- **Outside Scripts:** If checked, allows scripted objects owned by others to run on your land. Leaving this unchecked can help prevent others from doing things like firing scripted weapons on your land.
- **Snapshot:** Click on the snapshot box to select an image of your land to upload (will be included in Find Places if selected).
- **Landing Point:** Select a landing point where people will arrive if visiting your land. Click Set to place the landing point where you are standing. This is where people will be directed to if they teleport to your land from the Search menu.
- **Music URL:** If you have an external URL you would like to stream music from, enter it here.

Access Tab:

The Access Tab allows you to limit the access of your land to the group select on the General tab and/or up to 50 particular residents. You can also set the parcel to sell passes and select the amount and time limit for the pass.

Ban Tab:

On the "Ban" tab you can restrict access to your land by preventing certain avatars from visiting. Please note that any residents, even those who were added to the ban list, can still fly over your land at a certain height.

Be aware that you can also freeze and eject people on your land by right clicking directly on their avatar.

Edit Land Tool

To access the Edit Land tool, just click on your land and select Edit Land from the pie menu that appears. This opens the Edit Land tool with many different tools to assist you in editing your land.

Terraform

Use *Select Land* to select the land you would like to edit and then use *Flatten Land*, *Raise Land*, *Lower Land*, *Smooth Land* or *Roughen Land* to alter the land, reshaping it to your liking and *Revert* button returns it to the original shape if things get out of hand. Click on *Apply to Selection* to terraform the whole selected plot. Or you can use the pull down menu on the upper right to choose the size of your "brush" and "paint" the effect on by left clicking on portions of you land. You can also hold down the left button to terraform faster.

Show owners:

Selecting this box offers a color code to the land - reddish brown is land owned by others, green is your land, aqua is land owned by a group that you are a member of, grey is the rare public land, and purple is land in the auction system.

Subdivide:

You may want to break a parcel of land into multiple pieces, for example if you want to sell part of it. Select the section of your land by pressing down the left mouse button and dragging to create a rectangle of the land you want to subdivide and then click the *Subdivide* button.

Join:

If you want to connect 2 or more pieces of land that you own, drag a rectangle that overlaps all the land parcels you want to join and click the *Join* button to combine them into one. You can now use the *About Land* tool to set the features for this new piece of land.

Release:

When releasing land keep in mind you do not get \$Linden back - so you will only want to do this if you are feeling generous or you don't have time to sell the land.

Second Life Wiki

How to do everything in SL.



Pricing

How much does SL cost?



Islands

Buy your own island today!

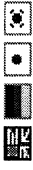


Got Questions?

Call us! 1 (800) 961-6851
Monday thru Friday, 9am-6pm PST.



[downloads](#) | [system requirements](#) | [privacy](#) | [community standards](#) | [terms of service](#) | [dmca](#) | [trademark usage](#) | [grid status](#) | [contact](#)



©2007 Linden Research, Inc. | [We're Hiring!](#)