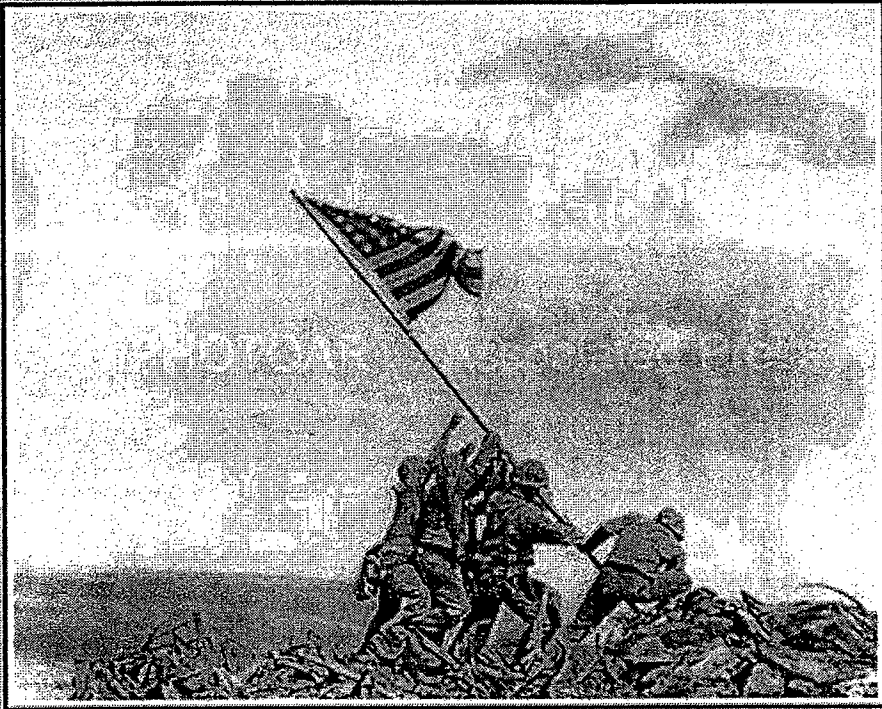


AP - The Associated Press Collection Limited Edition Photographs - Microsoft Internet Explorer

Image # APA6201490-L
Collection: The Associated Press Collection - Limited Editions



Title: "Old Glory Goes Up on Mt. Suribachi, Iwo Jima"
Photographer: JOE ROSENTHAL
Date: 2/23/1945
Location: Iwo Jima, Japan
Print Size: 20x24
Edition Size: 250/AP25/PP10
Retail Price: \$3,950.00

Description:
U.S. Marines of the 28th Regiment of the Fifth Division raise the American flag atop Mt. Suribachi, Iwo Jima, on Feb. 23, 1945. Strategically located only 660 miles from Tokyo, the Pacific island became the site of one of the bloodiest, most famous battles of World War II against Japan. This photograph won the Pulitzer Prize for Photography in 1945.

To order, please call 800.417.7625 (M-F, 9AM-5PM EST)
or email: sales@iphotoart.com
Image details subject to change without notice.

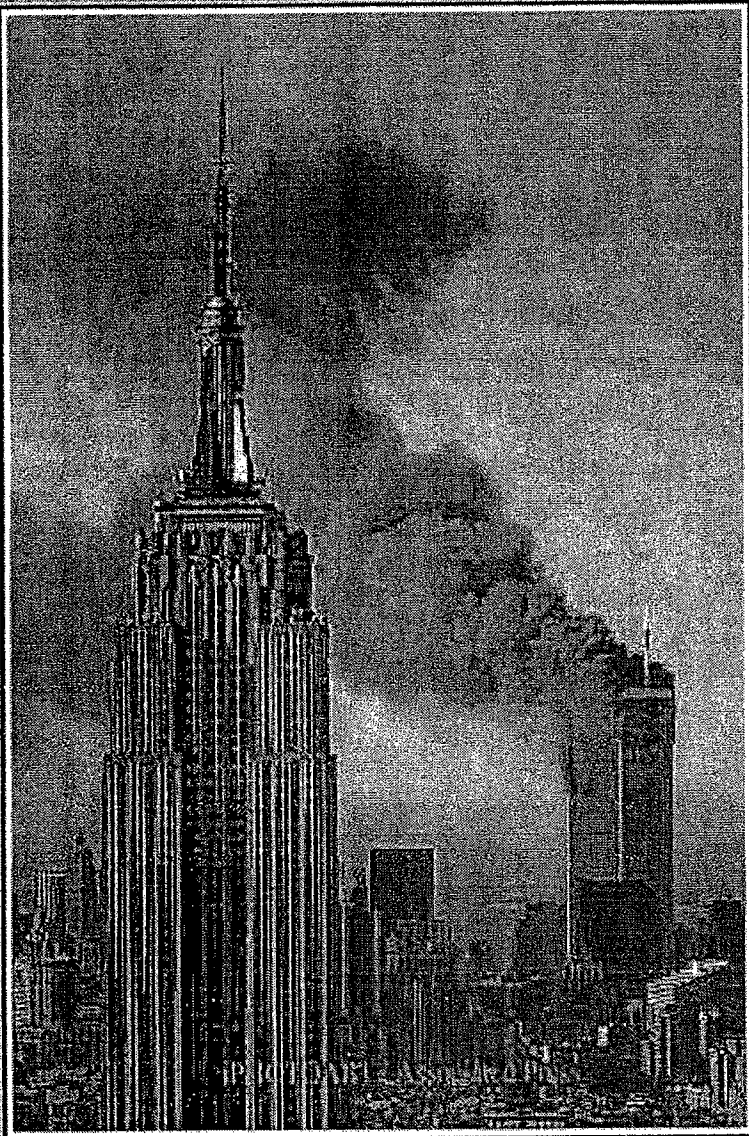
©2004 The Associated Press. ALL RIGHTS RESERVED.

MC 00392

EXHIBIT

17

tabbles



Title: "WORLD TRADE CENTER CRASH"

Photographer: PATRICK SISON

Date: 9/11/2001

Location: New York, NY

Print Size: 16x20

Edition Size: 250/AP25/PP10

Retail Price: \$1020.00

Description:

Plumes of smoke pour from the World Trade Center buildings in New York Tuesday, Sept. 11, 2001. Planes crashed into the upper floors of both World Trade Center towers minutes apart Tuesday in a horrific scene of explosions and fires that left gaping holes in the 110-story buildings. The Empire State building is seen in the foreground. (AP Photo/Patrick Sison)

To order, please call 800.417.7625 (M-F, 9AM-5PM EST)

or email: sales@photoart.com

Image details subject to change without notice.

MC 00380