

EXHIBIT F



US006266721B1

(12) **United States Patent**
Sheikh et al.

(10) **Patent No.:** **US 6,266,721 B1**
(45) **Date of Patent:** **Jul. 24, 2001**

(54) **SYSTEM ARCHITECTURE FOR REMOTE ACCESS AND CONTROL OF ENVIRONMENTAL MANAGEMENT**

(75) Inventors: **Tahir Q. Sheikh**, Fremont; **Karl S. Johnson**, Palo Alto; **Ken Nguyen**, San Jose, all of CA (US)

(73) Assignee: **Micron Electronics, Inc.**, Nampa, ID (US)

(*) Notice: Subject to any disclaimer, the term of this patent is extended or adjusted under 35 U.S.C. 154(b) by 0 days.

(21) Appl. No.: **08/942,160**

(22) Filed: **Oct. 1, 1997**

Related U.S. Application Data

(60) Provisional application No. 60/046,397, filed on May 13, 1997, provisional application No. 60/047,016, filed on May 13, 1997, and provisional application No. 60/046,416, filed on May 13, 1997.

(51) **Int. Cl.**⁷ **G06F 13/00**

(52) **U.S. Cl.** **710/100; 709/217**

(58) **Field of Search** 709/224, 217, 709/219; 714/47; 710/15, 18, 100, 126

(56) **References Cited**

U.S. PATENT DOCUMENTS

4,057,847	*	11/1977	Lowell et al.	364/200
4,100,597		7/1978	Fleming et al.	364/474
4,449,182		5/1984	Rubinson et al.	364/200
4,672,535	*	6/1987	Katzman et al.	364/200
4,692,918		9/1987	Elliott et al.	370/85
4,695,946		9/1987	Andreasen et al.	364/200
4,707,803		11/1987	Anthony, Jr. et al.	.

(List continued on next page.)

FOREIGN PATENT DOCUMENTS

0 866 403 A1	9/1998	(EP)	.
04 333 118	11/1992	(JP) G06F/1/18
07 093 064	4/1995	(JP) G06F/1/26

OTHER PUBLICATIONS

Lockareff, M., HTINews., <http://www.hometoys.com/htinews/dec96/articles/Ionworks.htm>, Dec. 1996, "Lonworks—An Introduction".

NetFRAME Systems Incorporated *datasheet*, Feb. 1992, "NF450FT Network Mainframe".

NetFRAME Systems Incorporated, *datasheet*, Mar. 1996, "NetFRAME Cluster Server 8000".

Schofield, M.J., <http://www.omegas.co.uk/CAN/canworks.htm>, Copyright 1996, 1997, "Controller Area Network—How CAN Works".

<http://www.nrtt.demon.co.uk/cantech.html>, May 28, 1997, "CAN: Technical overview".

(List continued on next page.)

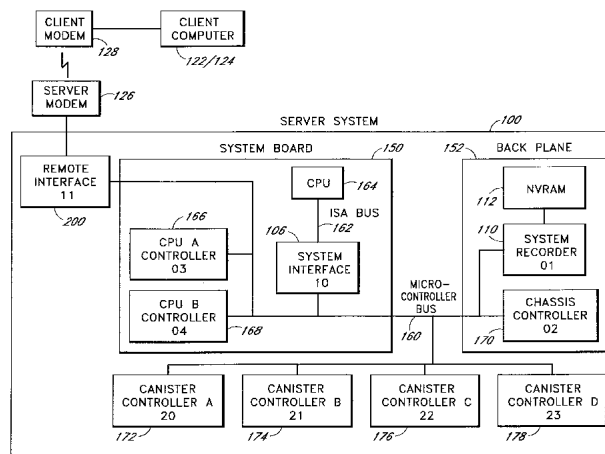
Primary Examiner—Thomas M. Heckler

(74) *Attorney, Agent, or Firm*—Knobbe, Martens Olson & Bear LLP

(57) **ABSTRACT**

A fault tolerant system by which individual components of a server are monitored and controlled through independent, programmable microcontrollers interconnected through a microcontroller network. An external agent can control and monitor the microcontrollers by extending the interconnection network beyond the physical server. The extension to the interconnection network converts protocols between media, and directs the microcontrollers and the state managed by the microcontrollers. Intervention of the server operating system software is not required and is not utilized for the access and control operations. A remote interface board provides the interface between the microcontroller network and an external modem that communicates with a remote client computer. The remote interface board also provides for connection to a local client computer.

8 Claims, 7 Drawing Sheets



U.S. PATENT DOCUMENTS

		5,564,024	10/1996	Pemberton	395/283
		5,566,339	10/1996	Perholtz et al.	395/750
		5,568,619	10/1996	Blackledge et al. .	
		5,572,403 *	11/1996	Mills	361/695
		5,577,205	11/1996	Hwang et al. .	
		5,579,487	11/1996	Meyerson et al.	395/280
		5,579,491	11/1996	Jeffries et al.	395/283
		5,579,528	11/1996	Register	395/671
		5,581,714	12/1996	Amini et al. .	
		5,584,030	12/1996	Husak et al.	395/750
		5,586,250	12/1996	Carbonneau et al.	395/183.2
		5,588,121	12/1996	Reddin et al.	395/200.15
		5,592,611	1/1997	Midgely et al.	395/182.02
		5,596,711	1/1997	Burckhardt et al.	395/182.21
		5,598,407 *	1/1997	Bud et al.	370/330
		5,602,758	2/1997	Lincoln et al.	364/505
		5,604,873	2/1997	Fite et al.	395/283
		5,608,876	3/1997	Cohen et al.	395/281
		5,621,159 *	4/1997	Brown et al.	73/9
		5,621,892	4/1997	Cook	395/200.1
		5,622,221 *	4/1997	Genga, Jr. et al.	165/208
		5,625,238	4/1997	Ady et al.	307/147
		5,627,962	5/1997	Goodrum et al.	395/182.11
		5,630,076	5/1997	Saulpaugh et al.	395/284
		5,631,847	5/1997	Kikinis	364/514 R
		5,636,341	6/1997	Matsushita et al.	395/182.11
		5,644,731	7/1997	Liencrez et al.	395/283
		5,652,839 *	7/1997	Giorgio et al.	709/224
		5,652,892 *	7/1997	Ugajin	395/750
		5,652,908	7/1997	Douglas et al.	395/800
		5,655,081	8/1997	Bonnell et al. .	
		5,655,083	8/1997	Bagley	395/182.31
		5,655,148	8/1997	Richman et al. .	
		5,659,682	8/1997	Devarakonda et al. .	
		5,664,118	9/1997	Nishigaki et al.	395/283
		5,666,538	9/1997	DeNicola .	
		5,668,943	9/1997	Attanasio et al.	395/182.05
		5,668,992	9/1997	Hammer et al.	395/651
		5,669,009	9/1997	Buktenica et al.	395/800.35
		5,671,371 *	9/1997	Kondo et al.	395/306
		5,675,723	10/1997	Ekrot et al. .	
		5,684,671	11/1997	Hobbs et al. .	
		5,689,637	11/1997	Johnson et al. .	
		5,696,899	12/1997	Kalwitz .	
		5,696,949	12/1997	Young	395/551
		5,701,417	12/1997	Lewis et al.	395/200.16
		5,704,031	12/1997	Mikami et al.	395/182.02
		5,715,456	2/1998	Bennett et al.	395/652
		5,717,570	2/1998	Kikinis	361/685
		5,721,935	2/1998	DeSchepper et al.	395/750
		5,724,529	3/1998	Smith et al. .	
		5,727,207	3/1998	Gates et al.	395/651
		5,732,266	3/1998	Moore et al.	395/651
		5,737,708 *	4/1998	Grob et al.	455/557
		5,742,514	4/1998	Bonola	364/492
		5,742,833 *	4/1998	Dea et al.	395/750.05
		5,752,164 *	5/1998	Jones	455/33.1
		5,754,396	5/1998	Felcman et al.	361/683
		5,754,449	5/1998	Hoshal et al.	364/550
		5,758,165	5/1998	Shuff	395/712
		5,758,352	5/1998	Reynolds et al.	707/200
		5,761,085 *	6/1998	Giorgio	709/224 X
		5,761,462	6/1998	Neal et al. .	
		5,764,924	6/1998	Hong	395/281
		5,765,008	6/1998	Desai et al. .	
		5,767,844	6/1998	Stoye	345/212
		5,774,741	6/1998	Choi .	
		5,777,897	7/1998	Giorgio	364/557
		5,778,197 *	7/1998	Dunham	395/284
		5,781,703	7/1998	Desai et al. .	
		5,781,744	7/1998	Johnson et al.	395/283
4,769,764 *	9/1988	Levanon	364/708		
4,774,502	9/1988	Kimura	340/501		
4,894,792	1/1990	Mitchell et al.	364/708		
5,006,961	4/1991	Monico .			
5,033,048	7/1991	Pierce et al.	371/21.2		
5,051,720 *	9/1991	Kittirutsunetorn	340/310 R		
5,073,932	12/1991	Yossifor et al.	380/23		
5,103,391	4/1992	Barrett	364/133		
5,121,500	6/1992	Arlington et al.	395/750		
5,123,017	6/1992	Simpkins et al.	371/15.1		
5,136,708	8/1992	Lapoutre et al.	395/650		
5,136,715	8/1992	Hirose et al.	395/775		
5,138,619	8/1992	Fasang et al.	371/21.1		
5,157,663 *	10/1992	Major et al.	371/9.1		
5,210,855	5/1993	Bartol	395/500		
5,222,897	6/1993	Collins et al.	439/157		
5,245,615	9/1993	Treu	371/16.5		
5,247,683	9/1993	Holmes et al.	395/700		
5,253,348 *	10/1993	Scalise	395/325		
5,261,094	11/1993	Everson et al.	395/600		
5,265,098	11/1993	Mattson et al.	371/11.1		
5,266,838 *	11/1993	Gerner	307/19		
5,272,382	12/1993	Heald et al.	307/66		
5,272,584	12/1993	Austruy et al.	361/58		
5,276,814	1/1994	Bourke et al.	395/275		
5,276,863	1/1994	Heider	395/575		
5,277,615	1/1994	Hastings et al.	439/377		
5,280,621	1/1994	Barnes et al.	395/800		
5,283,905	2/1994	Saadeh et al.	395/750		
5,307,354	4/1994	Cramer et al. .			
5,311,397	5/1994	Harshberger et al.	361/683		
5,311,451	5/1994	Barrett	364/550		
5,337,413	8/1994	Lui et al.	395/275		
5,351,276	9/1994	Doll, Jr. et al. .			
5,367,670	11/1994	Ward et al.	395/575		
5,379,184	1/1995	Barraza et al.	361/685		
5,379,409	1/1995	Ishikawa	395/575		
5,388,267	2/1995	Chan et al.	395/700		
5,402,431	3/1995	Saadeh et al.	371/67.1		
5,404,494	4/1995	Garney .			
5,430,845	7/1995	Rimmer et al.	395/275		
5,432,715	7/1995	Shigematsu et al.	364/551.01		
5,432,946 *	7/1995	Allard et al.	395/750		
5,438,678	8/1995	Smith	395/750		
5,440,748	8/1995	Sekine et al. .			
5,448,723	9/1995	Rowett	395/200.02		
5,455,933	10/1995	Schieve et al.	395/183.03		
5,460,441	10/1995	Hastings et al.	312/298		
5,463,766	10/1995	Schieve et al.	395/650		
5,471,617	11/1995	Farrand et al.	395/700		
5,471,634	11/1995	Giorgio et al.	395/600		
5,473,499 *	12/1995	Weir	361/58		
5,485,550	1/1996	Dalton	395/51		
5,485,607	1/1996	Lomet et al.	395/600		
5,487,148	1/1996	Komori et al. .			
5,491,791	2/1996	Glowny et al. .			
5,513,314	4/1996	Kandasamy et al.	395/182.04		
5,515,515	5/1996	Kennedy et al.	395/283		
5,519,851	5/1996	Bender et al.	395/500		
5,526,289 *	6/1996	Dinh et al.	364/557		
5,528,409 *	6/1996	Cucci et al.	359/171		
5,530,810	6/1996	Bowman	395/283		
5,533,193	7/1996	Roscoe	395/183.15		
5,535,326	7/1996	Baskey et al.	395/182.02		
5,546,272 *	8/1996	Moss et al.	361/687		
5,548,712	8/1996	Larson et al.	395/182.05		
5,559,764 *	9/1996	Chen et al.	396/30		
5,559,958 *	9/1996	Farrand et al.	395/183.03		
5,559,965	9/1996	Oztaskin et al. .			
5,560,022	9/1996	Dunstan et al.	395/750		

5,784,555	7/1998	Stone	395/200.5
5,787,019	7/1998	Knight et al.	364/550
5,787,459	* 7/1998	Stallmo et al.	711/112
5,787,491	7/1998	Merkin et al.	711/173
5,790,775	* 8/1998	Marks et al.	395/182.07
5,796,580	* 8/1998	Komatsu et al.	361/687
5,797,023	8/1998	Berman et al.	395/750.06
5,799,196	8/1998	Flannery	395/750.03
5,801,921	9/1998	Miller	.
5,802,298	9/1998	Imai et al.	395/200.47
5,802,305	* 9/1998	McKaughan et al.	395/200.57
5,802,324	9/1998	Wunderlich et al.	395/281
5,802,592	9/1998	Chess et al.	711/164
5,803,357	9/1998	Lakin	236/78 B
5,809,287	9/1998	Stupek, Jr. et al.	395/500
5,809,311	9/1998	Jones	395/750.01
5,809,555	9/1998	Hobson	711/172
5,812,748	9/1998	Ohran et al.	395/182.02
5,812,750	9/1998	Dev et al.	.
5,815,647	9/1998	Buckland et al.	395/182.01
5,815,652	9/1998	Ote et al.	.
5,821,596	10/1998	Miu et al.	257/419
5,826,043	10/1998	Smith et al.	395/281
5,835,719	11/1998	Gibson et al.	395/200.51
5,835,738	11/1998	Blackledge, Jr. et al.	.
5,838,932	11/1998	Alzien	395/308
5,841,991	11/1998	Russell	.
5,845,061	12/1998	Miyamoto et al.	395/182.02
5,845,095	12/1998	Reed et al.	395/283
5,850,546	12/1998	Kim	395/651
5,852,720	12/1998	Greedy et al.	.
5,852,724	12/1998	Glenn, II et al.	395/200.69
5,857,074	1/1999	Johnson	.
5,857,102	1/1999	McChesney et al.	395/653
5,864,653	1/1999	Tavallaei et al.	315/181
5,864,713	1/1999	Terry	395/872
5,867,730	2/1999	Leyda	395/830
5,875,307	2/1999	Ma et al.	395/281
5,875,310	2/1999	Buckland et al.	395/306
5,878,237	3/1999	Olorig	395/308
5,878,238	3/1999	Gan et al.	395/308
5,881,311	3/1999	Woods	395/824
5,884,027	3/1999	Garbus et al.	395/200.8
5,884,049	3/1999	Atkinson	395/281
5,886,424	3/1999	Kim	307/64
5,889,965	3/1999	Wallach et al.	395/283
5,892,928	4/1999	Wallach et al.	395/283
5,898,846	4/1999	Kelly	395/284
5,898,888	4/1999	Guthrie et al.	395/308
5,905,867	5/1999	Giorgio	395/200.54
5,907,672	5/1999	Matze et al.	395/182.06
5,909,568	6/1999	Nason	395/500
5,911,779	6/1999	Stallmo et al.	714/6
5,913,034	6/1999	Malcolm	395/200.53
5,922,060	7/1999	Goodrum	710/103
5,930,358	7/1999	Rao	380/4
5,936,960	8/1999	Stewart	370/438
5,964,855	10/1999	Bass et al.	710/103
5,983,349	11/1999	Kodama et al.	713/200
5,987,554	11/1999	Lui et al.	710/129
5,987,627	11/1999	Rawlings, III	714/48
6,012,130	1/2000	Beyda et al.	711/173
6,038,624	3/2000	Chan et al.	710/103

OTHER PUBLICATIONS

NetFRAME Systems Incorporated, *News Release*, 3 pages, referring to May 9, 1994, "NetFRAME's New High-Availability ClusterServer Systems Avoid Scheduled as well as Unscheduled Downtime."

Herr, et al., Linear Technology Magazine, *Design Features*, pp. 21-23, Jun. 1997, "Hot Swapping the PCI Bus."
ftp.cdrom.com/pub/os2/diskutil/, PHDX software, phdx.zip download, Mar. 1995, "Parallel Hard Disk Xfer."
Cmasters, Usenet post to microsoft.public.windowsnt.setup, Aug. 1997, "Re: FDISK switches."
Hildebrand, N., Usenet post to comp.msdos.programmer, May 1995, "Re: Structure of disk partition info."
Lewis, L., Usenet post to alt.msdos.batch, Apr. 1997, "Re: Need help with automating FDISK and FORMAT."
Netframe, <http://www.netframe-support.com/technology/datasheets/data.htm>, before Mar. 1997, "Netframe Cluster-System 9008 Data Sheet."
Simos, M., Usenet post to comp.os.msdos.misc, Apr. 1997, "Re: Auto FDISK and FORMAT."
Wood, M. H., Usenet post to comp.os.netware.misc, Aug. 1996, "Re: Workstation duplication method for WIN95."
Lyons, Computer Reseller News, Issue 721, pp. 61-62, Feb. 3, 1997, "ACC Releases Low-Cost Solution for ISPs."
M2 Communications, M2 Presswire, 2 pages, Dec. 19, 1996, "Novell IntranetWare Supports Hot Pluggable PCI from NetFRAME."
Rigney, PC Magazine, 14(17): 375-379, Oct. 10, 1995, "The One for the Road (Mobile-aware capabilities in Windows 95)."
Shanley, and Anderson, PCI System Architecture, Third Edition, p. 382, Copyright 1995.
Davis, T, Usenet post to alt.msdos.programmer, Apr. 1997, "Re: How do I create an FDISK batch file?"
Davis, T., Usenet post to alt.msdos.batch, Apr. 1997, "Re: Need help with automating FDISK and FORMAT . . ."
NetFrame Systems Incorporated, Doc. No. 78-1000226-01, pp. 1-2, 5-8, 359-404, and 471-512, Apr. 1996, "NetFrame Clustered Multiprocessing Software: NW0496 DC-ROM for Novell® NetWare® 4.1 SMP, 4.1, and 3.12."
Shanley, and Anderson, PCI System Architecture, Third Edition, Chapter 15, pp. 297-302, Copyright 1995, "Intro To Configuration Address Space."
Shanley, and Anderson, PCI System Architecture, Third Edition, Chapter 16, pp. 303-328, Copyright 1995, "Configuration Transactions."
Sun Microsystems Computer Company, Part No. 802-5355-10, Rev. A, May 1996, "Solstice SyMON User's Guid."
Sun Microsystems, Part No. 802-6569-11, Release 1.0.1, Nov. 1996, "Remote Systems Diagnostics Installation & User Guide."
Shanley and Anderson, PCI System Architecture, Third Edition, Chapters 15 & 16, pp. 297-328, CR 1995.
PCI Hot-Plug Specification, Preliminary Revision for Review Only, Revision 0.9, pp. i-vi, and 1-25, Mar. 5, 1997.
SES SCSI-3 Enclosure Services, X3T10/Project 1212-D/Rev 8a, pp. i, iii-x, 1-76, and I-1 (index), Jan. 16, 1997.
Compaq Computer Corporation, Technology Brief, pp. 1-13, Dec. 1996, "Where Do I Plug the Cable? Solving the Logical-Physical Slot Numbering Problem."

* cited by examiner

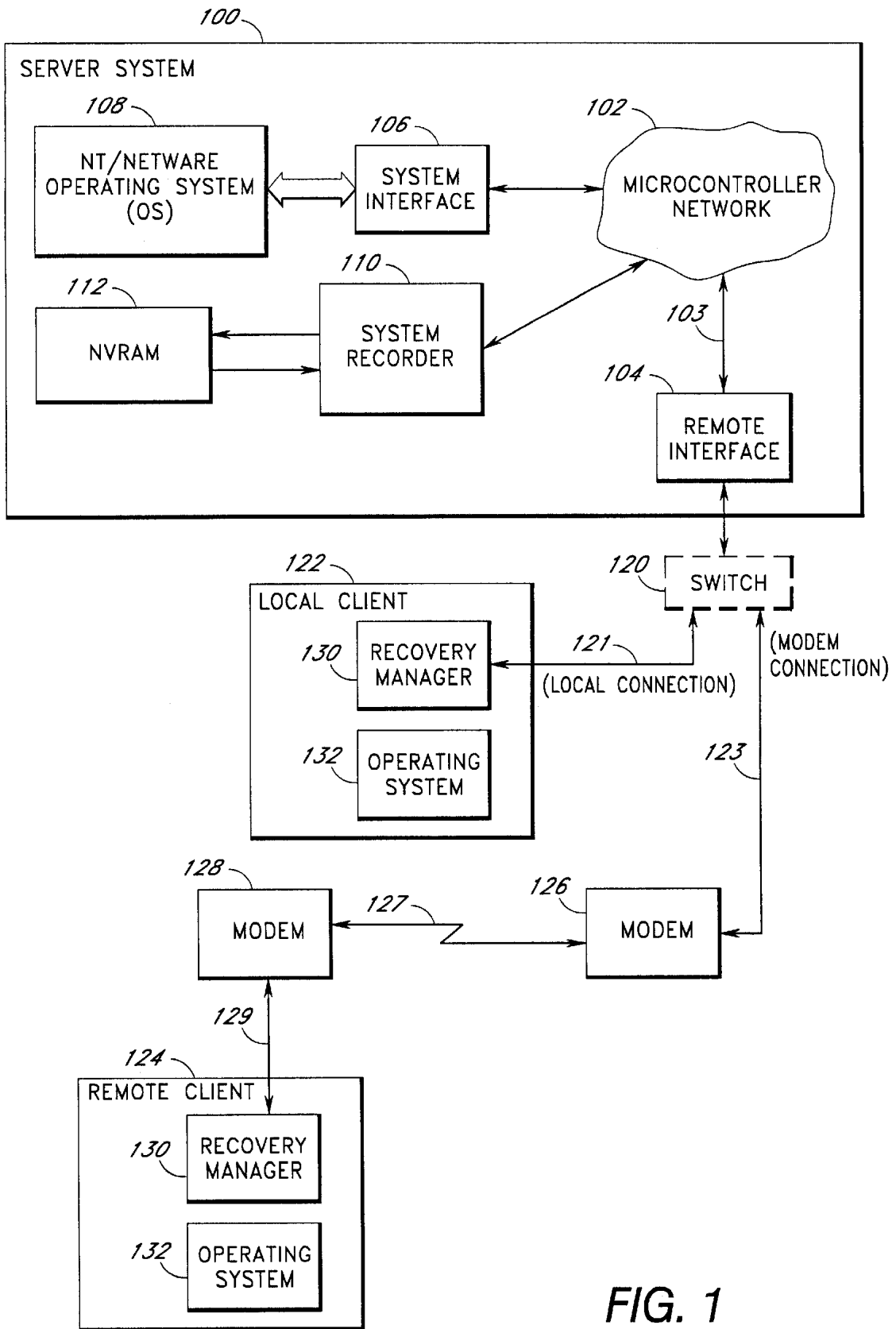
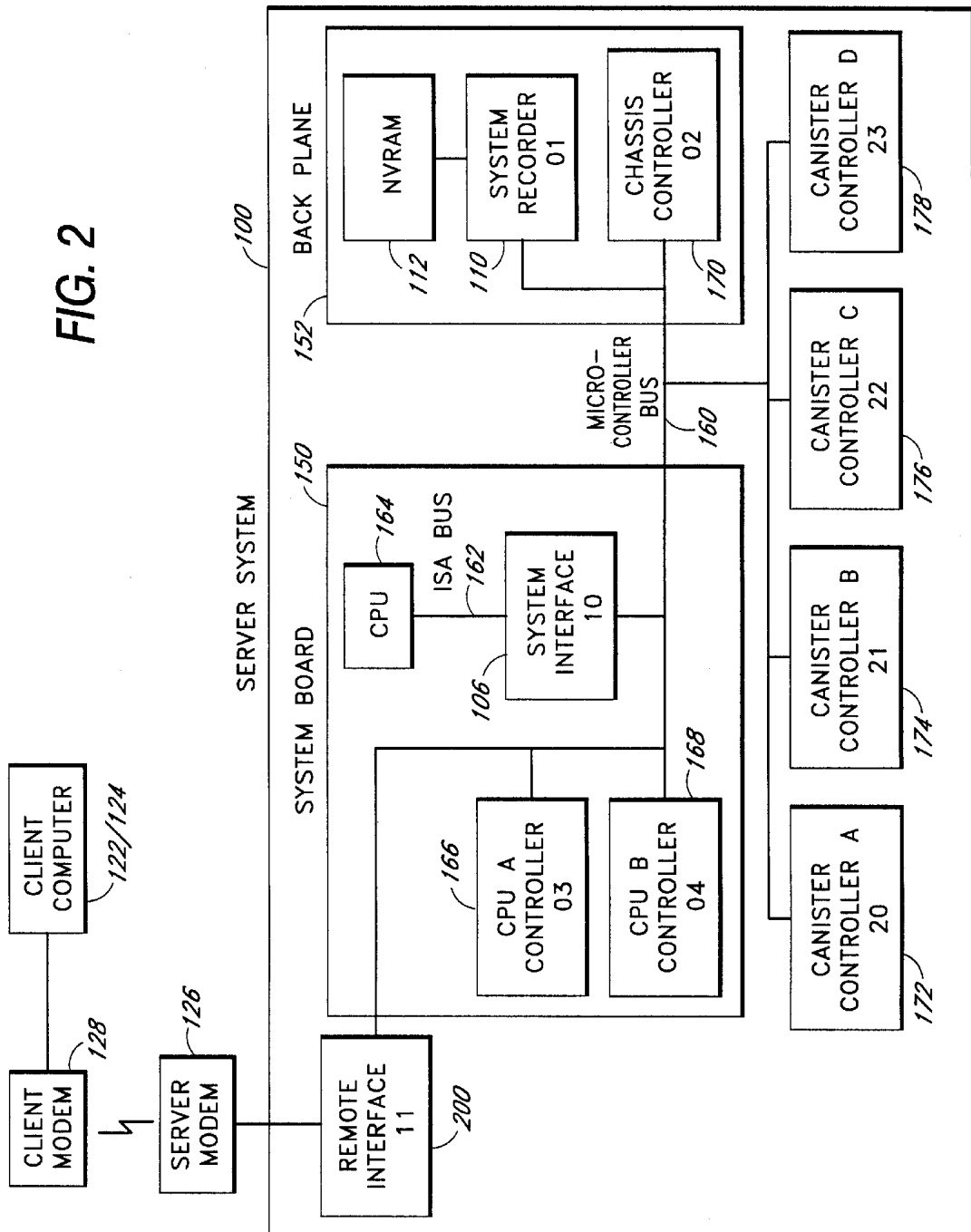


FIG. 1

FIG. 2



REMOTE INTERFACE BOARD AND CONNECTIONS

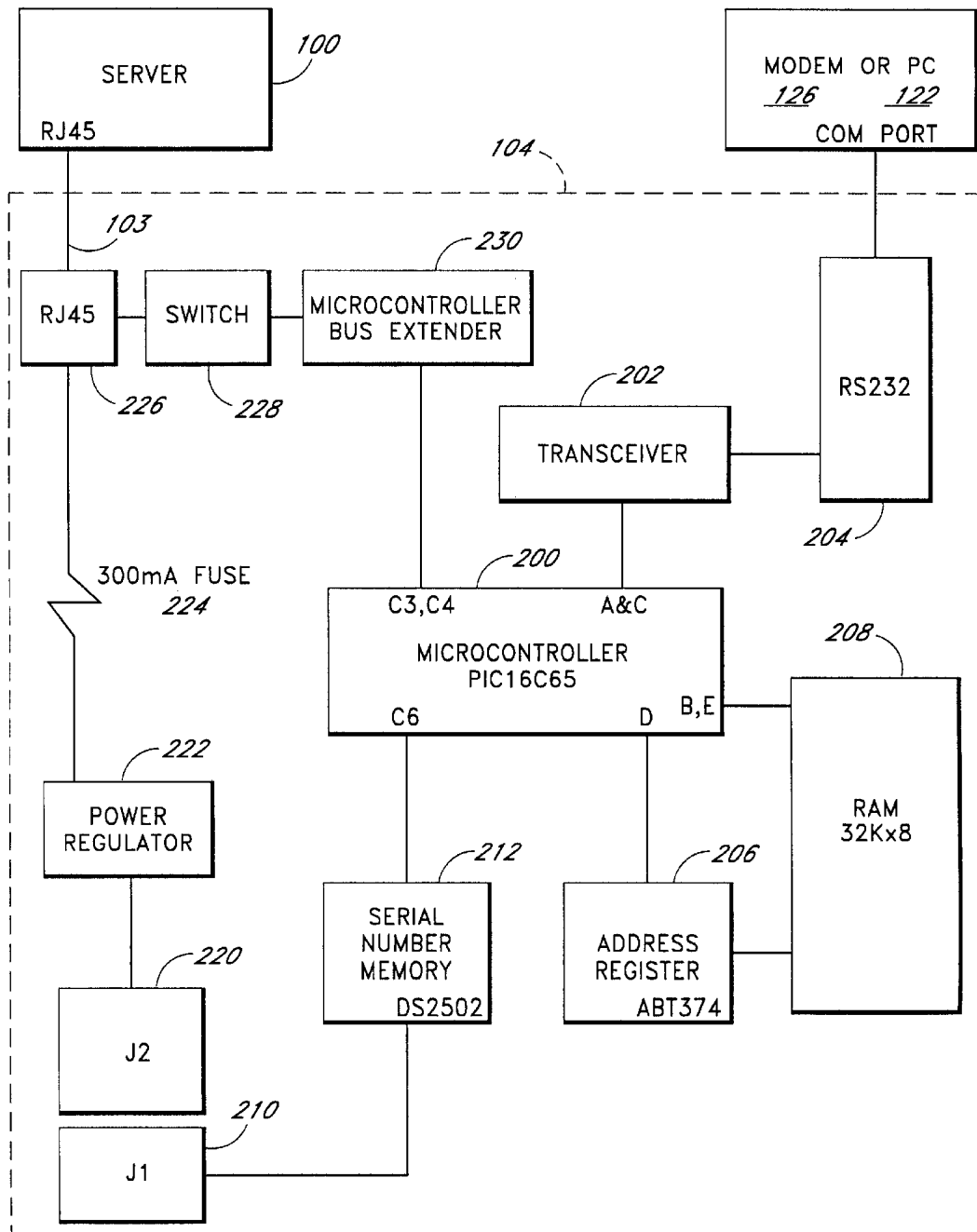


FIG. 3

Remote Interface Serial Protocol Message Formats

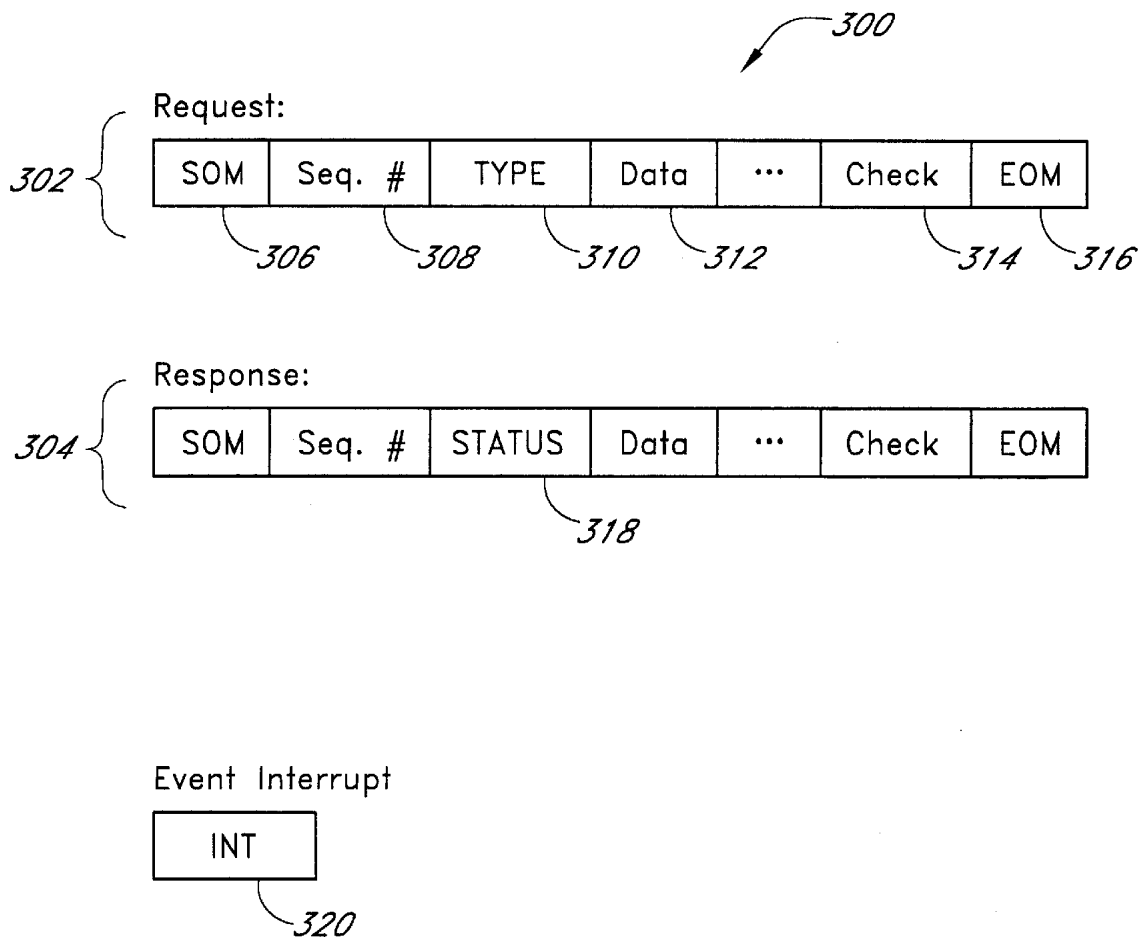


FIG. 4

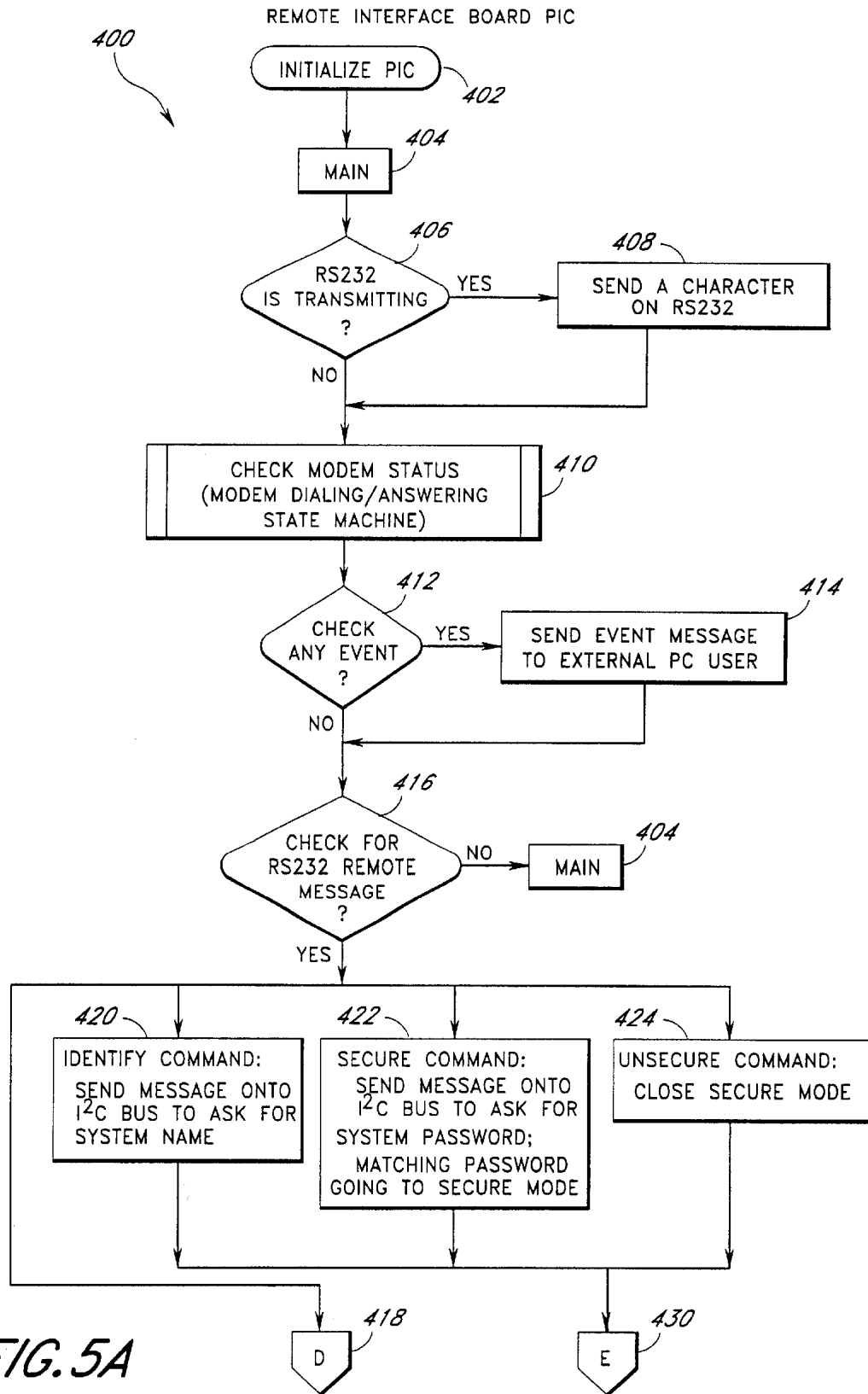


FIG. 5A

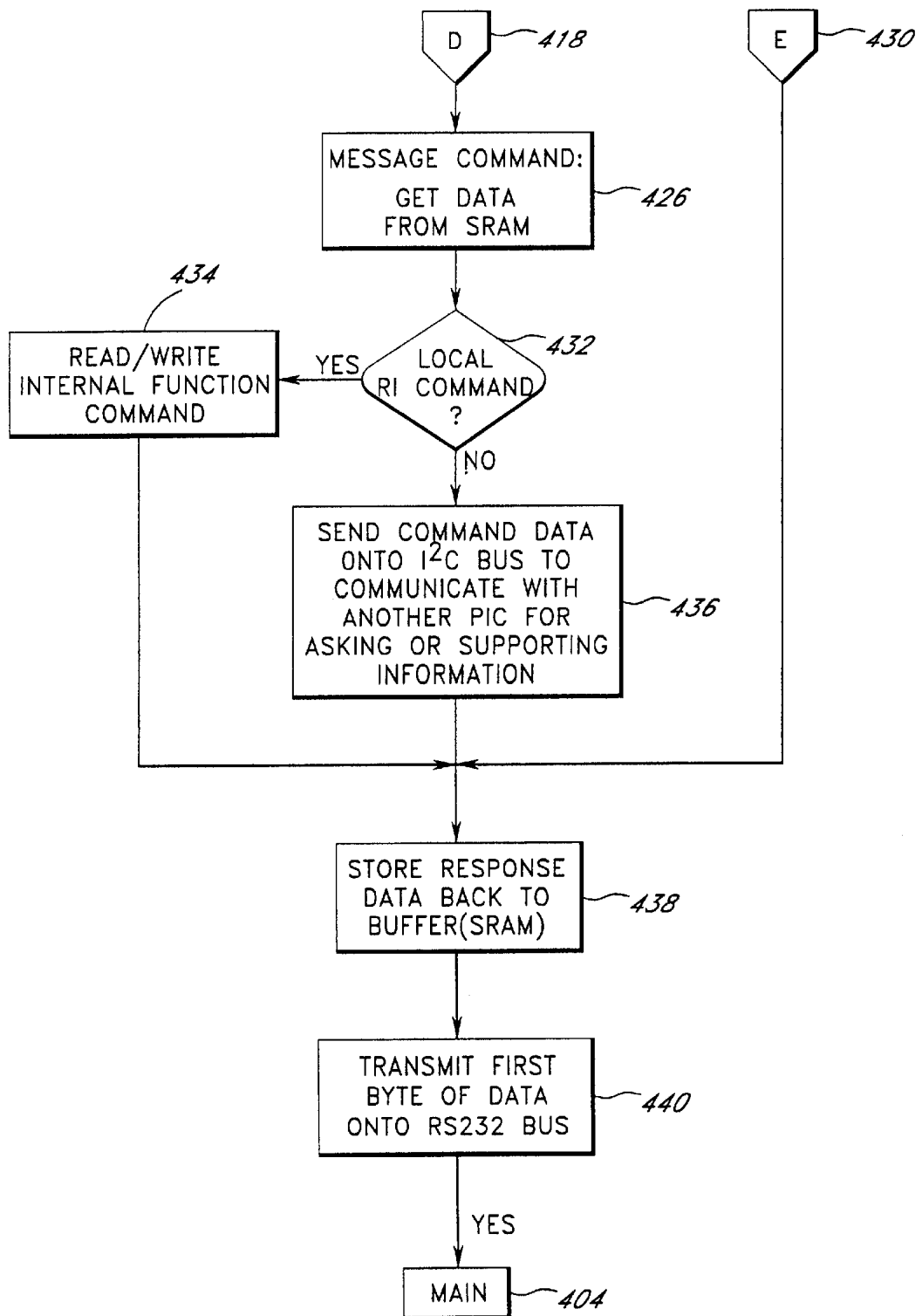
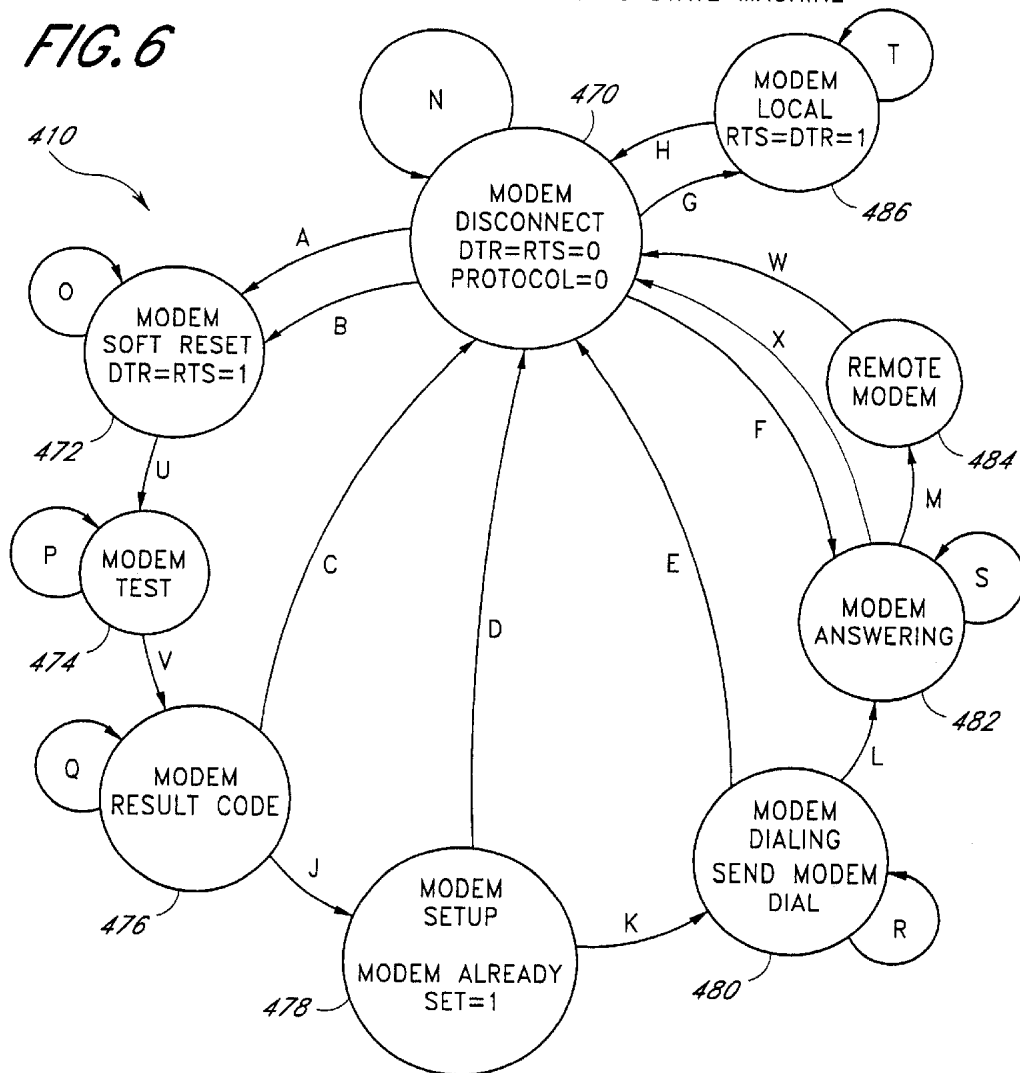


FIG. 5B

MODEM DIALING AND ANSWERING STATE MACHINE

FIG. 6



- | | |
|--|---|
| <p>A- CALL OUT (MODEM MODE & MODEM ALREADY SET & CTS & nDIAL RETRIES)</p> <p>B- SETUP (MODEM MODE & !MODEM ALREADY SET & CTS)</p> <p>C- !RESULT STATUS OK</p> <p>D- !nDIAL RETRIES</p> <p>E- !DIAL OK</p> <p>F- RINGING (MODEM MODE & MODEM ALREADY SET & CTS & RING)</p> <p>G- DSR</p> <p>H- (LOCAL & MODEM MODE) V !DSR</p> <p>J- RESULT STATUS OK</p> <p>K- nDIAL RETRIES</p> <p>L- DIAL OK</p> | <p>M- DSR & DCD</p> <p>N- !CTS</p> <p>V !nDIAL RETRIES</p> <p>V !RING</p> <p>V !DSR</p> <p>O- !SEND STRING DONE</p> <p>P- !SEND STRING DONE</p> <p>Q- !MODEM RESULT STATUS DONE</p> <p>R- !PREV EOS & !2 SECONDS</p> <p>S- !DSR</p> <p>V !DCD</p> <p>T- DSR</p> <p>U- SEND STRING DONE</p> <p>V- SEND STRING DONE</p> <p>W- !DCD</p> <p>X- !DCD & TIMEOUT</p> |
|--|---|

SYSTEM ARCHITECTURE FOR REMOTE ACCESS AND CONTROL OF ENVIRONMENTAL MANAGEMENT

RELATED APPLICATIONS

The subject matter of U.S. patent application entitled "Method of Remote Access and Control of Environmental Management," filed on Oct. 1, 1997, application Ser. No. 08/942,215, and having is related to this application.

Priority Claim

The benefit under 35 U.S.C. § 119(e) of the following U.S. provisional application(s) is hereby claimed:

Title	Application Ser. No.	Filing Date
"Remote Access and Control of Environmental Management System"	60/046,397	May 13, 1997
"Hardware and Software Architecture for Inter-Connecting an Environmental Management System with a Remote Interface"	60/047,016	May 13, 1997
"Self Management Protocol for a Fly-By-Wire Service Processor"	60/046,416	May 13, 1997

Appendices

Appendix A, which forms a part of this disclosure, is a list of commonly owned copending U.S. patent applications. Each one of the applications listed in Appendix A is hereby incorporated herein in its entirety by reference thereto.

Appendix B, which forms part of this disclosure, is a copy of the U.S. provisional patent application filed May 13, 1997, entitled "Remote Access and Control of Environmental Management System" and assigned application Ser. No. 60/046,397. Page 1, line 6 of the provisional application has been changed from the original to positively recite that the entire provisional application, including the attached documents, forms part of this disclosure.

Copyright Rights

A portion of the disclosure of this patent document contains material which is subject to copyright protection. The copyright owner has no objection to the facsimile reproduction by anyone of the patent document or the patent disclosure, as it appears in the Patent and Trademark Office patent files or records, but otherwise reserves all copyright rights whatsoever.

BACKGROUND OF THE INVENTION

1. Field of the Invention

The invention relates to fault tolerant computer systems. More specifically, the invention is directed to a system for providing remote access and control of server environmental management.

2. Description of the Related Technology

As enterprise-class servers become more powerful and more capable, they are also becoming increasingly sophisticated and complex. For many companies, these changes lead to concerns over server reliability and manageability, particularly in light of the increasingly critical role of server-based applications. While in the past many systems administrators were comfortable with all of the various components that made up a standards-based network server, today's generation of servers can appear as an incomprehensible, unmanageable black box. Without vis-

ibility into the underlying behavior of the system, the administrator must "fly blind." Too often the only indicators the network manager has on the relative health of a particular server is whether or not it is running.

It is well-acknowledged that there is a lack of reliability and availability of most standards-based servers. Server downtime, resulting either from hardware or software faults or from regular maintenance, continues to be a significant problem. By one estimate, the cost of downtime in mission critical environments has risen to an annual total of \$4.0 billion for U.S. businesses, with the average downtime event resulting in a \$140 thousand loss in the retail industry and a \$450 thousand loss in the securities industry. It has been reported that companies lose as much as \$250 thousand in employee productivity for every 1% of computer downtime. With emerging Internet, intranet and collaborative applications taking on more essential business roles every day, the cost of network server downtime will continue to spiral upward.

While hardware fault tolerance is an important element of an overall high availability architecture, it is only one piece of the puzzle. Studies show that a significant percentage of network server downtime is caused by transient faults in the I/O subsystem. These faults may be due, for example, to the device driver, the adapter card firmware, or hardware which does not properly handle concurrent errors, and often causes servers to crash or hang. The result is hours of downtime per failure, while a system administrator discovers the failure takes some action, and manually reboots the server. In many cases, data volumes on hard disk drives become corrupt and must be repaired when the volume is mounted. A dismount-and-mount cycle may result from the lack of "hot pluggability" in current standards-based servers. Diagnosing intermittent errors can be a frustrating and time-consuming process. For a system to deliver consistently high availability, it must be resilient to these types of faults. Accurate and available information about such faults is central to diagnosing the underlying problems and taking corrective action.

Modern fault tolerant systems have the functionality to provide the ambient temperature of a storage device enclosure and the operational status of other components such as the cooling fans and power supply. However, a limitation of these server systems is that they do not contain self-managing processes to correct malfunctions. Also, if a malfunction occurs in a typical server, it relies on the operating system software to report, record and manage recovery of the fault. However, many types of faults will prevent such software from carrying out these tasks. For example, a disk drive failure can prevent recording of the fault in a log file on that disk drive. If the system error caused the system to power down, then the system administrator would never know the source of the error.

Traditional systems are lacking in detail and sophistication when notifying system administrators of system malfunctions. System administrators are in need of a graphical user interface for monitoring the health of a network of servers. Administrators need a simple point-and-click interface to evaluate the health of each server in the network. In addition, existing fault tolerant servers rely upon operating system maintained logs for error recording. These systems are not capable of maintaining information when the operating system is inoperable due to a system malfunction. Existing systems do not have a system log for maintaining information when the main computational processors are inoperable.

Another limitation of the typical fault tolerant system is that the control logic for the diagnostic system is associated

with a particular processor. Thus, if the environmental control processor malfunctioned, then all diagnostic activity on the computer would cease. In traditional systems, if a controller dedicated to the fan system failed, then all fan activity could cease resulting in overheating and ultimate failure of the server. What is desired is a way to obtain diagnostic information when the server OS is not operational or even when main power to the server is down.

Existing fault tolerant systems also lack the power to remotely control a particular server, such as powering up and down, resetting, retrieving or updating system status, displaying flight recorder and so forth. Such control of the server is desired even when the server power is down. For example, if the operating system on the remote machine failed, then a system administrator would have to physically go to the remote machine to re-boot the malfunctioning machine before any system information could be obtained or diagnostics could be started.

Therefore, a need exists for improvements in server management which will result in greater reliability and dependability of operation. Server users are in need of a management system by which the users can accurately gauge the health of their system. Users need a high availability system that must not only be resilient to faults, but must allow for maintenance, modification, and growth—without downtime. System users must be able to replace failed components, and add new functionality, such as new network interfaces, disk interface cards and storage, without impacting existing users. As system demands grow, organizations must frequently expand, or scale, their computing infrastructure, adding new processing power, memory, storage and I/O capacity. With demand for 24-hour access to critical, server-based information resources, planned system downtime for system service or expansion has become unacceptable.

SUMMARY OF THE INVENTION

Embodiments of the inventive remote access system provides system administrators with new levels of client/server system availability and management. It gives system administrators and network managers a comprehensive view into the underlying health of the server—in real time, whether on-site or off-site. In the event of a failure, the invention enables the administrator to learn why the system failed, why the system was unable to boot, and to control certain functions of the server from a remote station.

One embodiment of the present invention is a system for external management of a server environment, the system comprising a first computer having a plurality of components; a second computer connected to the first computer; a plurality of microcontrollers that monitor components of the first computer; a bus that interconnects the microcontrollers; and a remote interface circuit that interfaces the microcontrollers with the second computer thereby facilitating the external management of the first computer components.

Another embodiment of the present invention is a system for external management of a computer environment, the system comprising a first computer having a plurality of components; a second computer connected to the first computer; means for monitoring components of the first computer; and means for interfacing the monitoring means with the second computer to facilitate the external management of the first computer components.

Yet another embodiment of the present invention is a remote interface, comprising a microcontroller; a memory connected to the microcontroller, a first port capable of

receiving and transmitting monitoring data; and a second port capable of receiving and transmitting monitoring data, wherein the second port includes connectivity to a microcontroller bus.

BRIEF DESCRIPTION OF THE DRAWINGS

FIG. 1 is a top level block diagram of microcontroller network components utilized by an embodiment of the present invention.

FIG. 2 is a block diagram of the server portion of the microcontroller network shown in FIG. 1.

FIG. 3 is a block diagram of a remote interface board (RIB) that is part of the microcontroller network shown in FIGS. 1 and 2.

FIG. 4 is a diagram of serial protocol message formats utilized by the RIB shown in FIG. 3.

FIGS. 5a and 5b are a flowchart of a RIB microcontroller that is a part of the microcontroller network shown in FIGS. 1 and 2.

FIG. 6 is a diagram of a modem dialing and answering state machine defined in FIG. 5a.

DETAILED DESCRIPTION OF THE INVENTION

The following detailed description presents a description of certain specific embodiments of the present invention. In this description, reference is made to the drawings wherein like parts are designated with like numerals throughout.

For convenience, the discussion of the invention is organized into the following principal sections: Introduction, Server System, Microcontroller Network, Remote Interface Board, Remote Interface Serial Protocol, and RIB Microcontroller Operation.

I. INTRODUCTION

The inventive computer server system and client computer includes a distributed hardware environment management system that is built as a small self-contained network of microcontrollers. Operating independently of the system processor and operating system software, embodiments of present invention uses separate processors for providing information and managing the hardware environment including fans, power supplies and temperature.

Initialization, modification and retrieval of system conditions are performed through utilization of a remote interface by issuing commands to the environmental processors. The system conditions may include system log size, presence of faults in the system log, serial number for each of the environmental processors, serial numbers for each power supply of the system, system identification, system log count, power settings and presence, canister presence, temperature, BUS/CORE speed ratio, fan speeds, settings for fan faults, LCD display, Non-Maskable Interrupt (NMI) request bits, CPU fault summary, FRU status, JTAG enable bit, system log information, remote access password, over-temperature fault, CPU error bits, CPU presence, CPU thermal fault bits, and remote port modem. The aforementioned list of capabilities provided by the present environmental system is not all-inclusive.

The server system and client computer provides mechanisms for the evaluation of the data that the system collects and methods for the diagnosis and repair of server problems in a manner that system errors can be effectively and efficiently managed. The time to evaluate and repair prob-

lems is minimized. The server system ensures that the system will not go down, so long as sufficient system resources are available to continue operation, but rather degrade gracefully until the faulty components can be replaced.

II. SERVER SYSTEM

Referring to FIG. 1, a server system **100** with a remote client computer will be described. In a one embodiment, the server system hardware environment **100** may be built around a self-contained network of microcontrollers, such as, for example, a remote interface microcontroller on the remote interface board or circuit **104**, a system interface microcontroller **106** and a system recorder microcontroller **110**. This distributed service processor network **102** may operate as a fully self-contained subsystem within the server system **100**, continuously monitoring and managing the physical environment of the machine (e.g., temperature, voltages, fan status). The microcontroller network **102** continues to operate and provides a system administrator with critical system information, regardless of the operational status of the server **100**.

Information collected and analyzed by the microcontroller network **102** can be presented to a system administrator using either SNMP-based system management software (not shown), or using microcontroller network Recovery Manager software **130** through a local connection **121** or a dial-in connection **123**. The system management software, which interfaces with the operating system (OS) **108** such as Microsoft Windows NT Version 4.0 or Novell Netware Version 4.11, for example, provides the ability to manage the specific characteristics of the server system, including Hot Plug Peripheral Component Interconnect (PCI), power and cooling status, as well as the ability to handle alerts associated with these features.

The microcontroller network Recovery Manager software **130** allows the system administrator to query the status of the server system **100** through the microcontroller network **102**, even when the server is down. Using the microcontroller network remote management capability, a system administrator can use the Recovery Manager **130** to re-start a failed system through a modem connection **123**. First, the administrator can remotely view the microcontroller network Flight Recorder, a feature that stores all system messages, status and error reports in a circular Non-Volatile Random Access Memory buffer (NVRAM) **112**. Then, after determining the cause of the system problem, the administrator can use microcontroller network "fly by wire" capability to reset the system, as well as to power the system off or on. "Fly by wire" denotes that no switch, indicator or other control is directly connected to the function it monitors or controls, but instead, all the control and monitoring connections are made by the microcontroller network **102**.

The remote interface board (RIB) **104** interfaces the server system **100** to an external client computer. The RIB **104** may be internal or external to an enclosure of the server **100**. Furthermore, the RIB may be incorporated onto another circuit of the server, such as a system board **150** (FIG. 2) or a backplane **152** of the server. The RIB **104** connects to either a local client computer **122** at the same location as the server **100** or to a remote client computer **124** through an optional switch **120**. The client computer **122/124** may in one embodiment run either Microsoft Windows 95 or Windows NT Workstation version 4.0 operating system (OS) **132**.

The client computer **122/124** could be another server, such as, for example, a backup server. The client computer

122/124 could also be a handheld computer such as, for example, a personal digital assistant (PDA). It is not necessary that Operating System software be running on the client computer **122/124**. For example, the client computer **122/124** could be hard-wired for specific tasks, or could have special purpose embedded software.

The processor and RAM requirements of the client computer **122/124** are such as necessary by the OS **132**. The serial port of the client computer **122/124** may utilize a type 16550A Universal Asynchronous Receiver Transmitter (UART). The switch **120** facilitates either the local connection **121** or the modem connection **123** at any one time, but allows both types of connections to be connected to the switch. In an another embodiment, either the local connection **121** or the modem connection **123** is connected directly to the RIB **104**. The local connection **121** utilizes a readily available null-modem serial cable to connect to the local client computer. The modem connection may utilize a Hayes-compatible server modem **126** and a Hayes-compatible client modem **128**. In one embodiment, a model V.34X 33.6K data/fax modem available from Zoom is utilized as the client modem and the server modem. In another embodiment, a Sportster 33.6K data/fax modem available from US Robotics is utilized as the client modem.

The steps of connecting the remote client computer **124** to the server **100** will now be briefly described. The remote interface **104** has a serial port connector **204** (FIG. 3) that directly connects with a counterpart serial port connector of the external server modem **126** without the use of a cable. If desired, a serial cable could be used to interconnect the remote interface **104** and the server modem **126**. The cable end of an AC to DC power adapter (not shown, for example a 120 Volt AC to 7.5 Volt DC, or a 220V, European or Japanese adapter) is then connected to the DC power connector J2 (**220**, FIG. 3) of the remote interface, while the double-prong end is plugged into a 120 Volt AC wall outlet. One end of an RJ-45 parallel-wire data cable **103** is then plugged into an RJ-45 jack (**226**, FIG. 3) on the remote interface **104**, while the other end is plugged into a RJ-45 Recovery Manager jack on the server **100**. The RJ-45 jack on the server then connects to the microcontroller network **102**. The server modem **126** is then connected to a communications network **127** using an appropriate connector. The communications network **127** may be a public switched telephone network, although other modem types and communication networks are envisioned. For example, if cable modems are used for the server modem **126** and client modem **128**, the communications network can be a cable television network. As another example, satellite modulator/demodulators can be used in conjunction with a satellite network.

In another embodiment, the server modem to client modem connection may be implemented by an Internet connection utilizing the well known TCP/IP protocol. Any of several Internet access devices, such as modems or network interface cards, may be utilized. Thus, the communications network **127** may utilize either circuit or packet switching.

At the remote client computer **124**, a serial cable (25-pin D-shell) **129** is used to interconnect the client modem **128** and the client computer **124**. The client modem **128** is then connected to the communications network **127** using an appropriate connector. Each modem is then plugged into an appropriate power source for the modem, such as an AC outlet. At this time, the Recovery Manager software **130** is loaded into the client computer **124**, if not already present, and activated.

The steps of connecting the local client computer **122** to the server **100** are similar, but modems are not necessary. The main difference is that the serial port connector of the remote interface **104** connects to a serial port of the local client computer **122** by the null-modem serial cable **121**.

III. MICROCONTROLLER NETWORK

In one embodiment, the invention is implemented by a network of microcontrollers **102** (FIG. 1). The microcontrollers may provide functionality for system control, diagnostic routines, self-maintenance control, and event logging processors. A further description of the microcontrollers and microcontroller network is provided in U.S. patent application Ser. No. 08/942,402 entitled "Diagnostic and Managing Distributed Processor System".

Referring to FIG. 2, in one embodiment of the invention, the network of microcontrollers **102** includes ten processors. One of the purposes of the microcontroller network **102** is to transfer messages to the other components of the server system **100**. The processors may include: a System Interface controller **106**, a CPU A controller **166**, a CPU B controller **168**, a System Recorder **110**, a Chassis controller **170**, a Canister A controller **172**, a Canister B controller **174**, a Canister C controller **176**, a Canister D controller **178** and a Remote Interface controller **200**. The Remote Interface controller **200** is located on the RIB **104** (FIG. 1) which is part of the server system **100**, but may preferably be external to the server enclosure. The System Interface controller **106**, the CPU A controller **166** and the CPU B controller **168** are located on the system board **150** in the server **100**. Also located on the system board are one or more central processing units (CPUs) or microprocessors **164** and an Industry Standard Architecture (ISA) bus **162** that connects to the System Interface Controller **106**. Of course, other buses such as PCI, EISA and Microchannel may be used. The CPU **164** may be any conventional general purpose single-chip or multi-chip microprocessor such as a Pentium®, Pentium® Pro or Pentium® II processor available from Intel Corporation, a SPARC processor available from Sun Microsystems, a MIPS® processor available from Silicon Graphics, Inc., a Power PC® processor available from Motorola, or an ALPHA® processor available from Digital Equipment Corporation. In addition, the CPU **164** may be any conventional special purpose microprocessor such as a digital signal processor or a graphics processor.

The System Recorder **110** and Chassis controller **170**, along with the NVRAM **112** that connects to the System Recorder **110**, may be located on the backplane **152** of the server **100**. The System Recorder **110** and Chassis controller **170** are typically the first microcontrollers to power up when server power is applied. The System Recorder **110**, the Chassis controller **170** and the Remote Interface microcontroller **200** are the three microcontrollers that have a bias 5 volt power supplied to them. If main server power is off, an independent power supply source for the bias 5 volt power is provided by the RIB **104** (FIG. 1). The Canister controllers **172-178** are not considered to be part of the backplane **152** because they are located on separate cards and are removable.

Each of the microcontrollers has a unique system identifier or address. The addresses are as follows in Table 1:

TABLE 1

Microcontroller	Address
System Interface controller 106	10
CPU A controller 166	03
CPU B controller 168	04
System Recorder 110	01
Chassis controller 170	02
Canister A controller 172	20
Canister B controller 174	21
Canister C controller 176	22
Canister D controller 178	23
Remote Interface controller 200	11

The microcontrollers may be Microchip Technologies, Inc. PIC processors in one embodiment, although other microcontrollers, such as an 8051 available from Intel, an 8751 available from Atmel, and a P80CL580 microprocessor available from Philips, could be utilized. The PIC16C74 (Chassis controller **170**) and PIC16C65 (the other controllers) are members of the PIC16CXX family of CMOS, fully-static, EPROM-based 8-bit microcontrollers. The PIC controllers have 192 bytes of RAM, in addition to program memory, three timer/counters, two capture/compare/Pulse Width Modulation modules and two serial ports. The synchronous serial port is configured as a two-wire Inter-Integrated Circuit (I²C) bus in one embodiment of the invention. The PIC controllers use a Harvard architecture in which program and data are accessed from separate memories. This improves bandwidth over traditional von Neumann architecture processors where program and data are fetched from the same memory. Separating program and data memory further allows instructions to be sized differently than the 8-bit wide data word. Instruction opcodes are 14-bit wide making it possible to have all single word instructions. A 14-bit wide program memory access bus fetches a 14-bit instruction in a single cycle.

In one embodiment of the invention, the microcontrollers communicate through an I²C serial bus, also referred to as a microcontroller bus **160**. The document "The I²C Bus and How to Use It" (Philips Semiconductor, 1992) is hereby incorporated by reference. The I²C bus is a bidirectional two-wire bus that may operate at a 400 kbps. However, other bus structures and protocols could be employed in connection with this invention. For example, Apple Computer ADB, Universal Serial Bus, IEEE-1394 (Firewire), IEEE488 (GPIB), RS485, or Controller Area Network (CAN) could be utilized as the microcontroller bus. Control on the microcontroller bus is distributed. Each microcontroller can be a sender (a master) or a receiver (a slave) and each is interconnected by this bus. A microcontroller directly controls its own resources, and indirectly controls resources of other microcontrollers on the bus.

Here are some of the features of the I²C-bus:

Two bus lines are utilized: a serial data line (SDA) and a serial clock line (SCL).

Each device connected to the bus is software addressable by a unique address and simple master/slave relationships exist at all times; masters can operate as master-transmitters or as master-receivers.

The bus is a true multi-master bus including collision detection and arbitration to prevent data corruption if two or more masters simultaneously initiate data transfer.

Serial, 8-bit oriented, bidirectional data transfers can be made at up to 400 kbit/second in the fast mode.

Two wires, serial data (SDA) and serial clock (SCL), carry information between the devices connected to the I²C bus. Each device is recognized by a unique address and can operate as either a transmitter or receiver, depending on the function of the device. For example, a memory device connected to the I²C bus could both receive and transmit data. In addition to transmitters and receivers, devices can also be considered as masters or slaves when performing data transfers (see Table 2). A master is the device which initiates a data transfer on the bus and generates the clock signals to permit that transfer. At that time, any device addressed is considered a slave.

TABLE 2

Definition of I ² C-bus terminology	
Term	Description
Transmitter	The device which sends the data to the bus
Receiver	The device which receives the data from the bus
Master	The device which initiates a transfer, generates clock signals and terminates a transfer
Slave	The device addressed by a master
Multi-master	More than one master can attempt to control the bus at the same time without corrupting the message
Arbitration	Procedure to ensure that, if more than one master simultaneously tries to control the bus, only one is allowed to do so and the message is not corrupted
Synchronization	Procedure to synchronize the clock signal of two or more devices

The I²C-bus is a multi-master bus. This means that more than one device capable of controlling the bus can be connected to it. As masters are usually microcontrollers, consider the case of a data transfer between two microcontrollers connected to the I²C-bus. This highlights the master-slave and receiver-transmitter relationships to be found on the I²C-bus. It should be noted that these relationships are not permanent, but depend on the direction of data transfer at that time. The transfer of data would proceed as follows:

- 1) Suppose microcontroller A wants to send information to microcontroller B:
microcontroller A (master), addresses microcontroller B (slave);
microcontroller A (master-transmitter), sends data to microcontroller B (slave-receiver);
microcontroller A terminates the transfer.
- 2) If microcontroller A wants to receive information from microcontroller B:
microcontroller A (master) addresses microcontroller B (slave);
microcontroller A (master-receiver) receives data from microcontroller B (slave-transmitter);
microcontroller A terminates the transfer.

Even in this situation, the master (microcontroller A) generates the timing and terminates the transfer.

The possibility of connecting more than one microcontroller to the I²C-bus means that more than one master could try to initiate a data transfer at the same time. To avoid the chaos that might ensue from such an event, an arbitration procedure has been developed. This procedure relies on the wired-AND connection of all I²C interfaces to the I²C-bus.

If two or more masters try to put information onto the bus, the first to produce a 'one' when the other produces a 'zero' will lose the arbitration. The clock signals during arbitration are a synchronized combination of the clocks generated by the masters using the wired-AND connection to the SCL line.

Generation of clock signal on the I²C-bus is the responsibility of master devices. Each master microcontroller generates its own clock signals when transferring data on the bus.

The command, diagnostic, monitoring and history functions of the microcontroller network **102** are accessed using a global network memory model in one embodiment. That is, any function may be queried simply by generating a network "read" request targeted at the function's known global network address. In the same fashion, a function may be exercised simply by "writing" to its global network address. Any microcontroller may initiate read/write activity by sending a message on the I²C bus to the microcontroller responsible for the function (which can be determined from the known global address of the function). The network memory model includes typing information as part of the memory addressing information.

Using a network global memory model in one embodiment places relatively modest requirements for the I²C message protocol.

All messages conform to the I²C message format including addressing and read/write indication.

All I²C messages use seven bit addressing.

Any controller can originate (be a Master) or respond (be a Slave).

All message transactions consist of I²C "Combined format" messages. This is made up of two back-to-back I²C simple messages with a repeated START condition between (which does not allow for re-arbitrating the bus). The first message is a Write (Master to Slave) and the second message is a Read (Slave to Master).

Two types of transactions are used: Memory-Read and Memory-Write.

Sub-Addressing formats vary depending on data type being used.

IV. REMOTE INTERFACE BOARD

Referring to FIG. 3, the remote interface board (RIB) **104**, previously shown in FIG. 1, will now be described. The RIB is an interface between the microcontroller network **102** (FIG. 1) of the server system **100** and an external client computer **122/124**. The server system status and commands are passed through the RS232 connector port **204** at the client side of the RIB to the microcontroller network **102** on the server **100**, controlled through the on-board PIC16C65 microcontroller **200**. Signals in the microcontroller network **102** are transported by the microcontroller bus **160** (FIG. 2). In one embodiment, the microcontroller bus **160** utilizes the I²C bus protocol, previously described. The signals on the microcontroller bus **160** are received from the server **100** by the RIB **104** on the RJ-45 cable **103** and are translated by the PIC16C65 microcontroller **200** into an eight signal RS232 protocol. These RS232 signals are passed through a RS232 line transceiver **202**, such as a LT1133A chip available from Linear Technology, with a baud rate capable of reaching the speed of 120 kbaud. A 25 pin D-Sub connector **204** connects to the other side of the line transceiver **202** and provides the point at which either the local client computer **122** or the server modem **126** makes a connection.

The two wire microcontroller bus **160** is brought in from the server **100** and passed to the microcontroller **200** using the RJ-45 cable **103** and RJ-45 connector **226**. A switch **228**, such as a QS3126 switch available from Quick Logic, connects to the RJ-45 connector **226** and provides isolation for the data and clock bus signals internal and external to the RIB **104**. If the RIB **104** and switch **228** have power, the switch **228** feeds the bus signals through to a microcontroller bus extender **230**. Otherwise, if the switch **228** does not have power, the microcontroller bus **160** is isolated from the RIB **104**. The bus extender **230** connects between the switch **228**

and the microcontroller **200**. The bus extender **230** is a buffer providing drive capability for the clock and data signals. In one embodiment, the bus extender **230** is a 82B715 chip available from Philips Semiconductor. Microcontroller **200** Port C, bit **3** is the clocking bit and Port C, bit **4** is the data line.

Communication with the server modem **126** is based on the RS232 protocol. The microcontroller **200** generates the receive and the transmit signals, where the signal levels are transposed to the RS232 levels by the LT1133A line transceiver **202**. There are three transmit signals, RTS, SOUT and DTR, which are from Port A, bits **2**, **3** and **4** of the microcontroller **200**, whereas the five receive signals are from two ports, DCD, DSR from Port C, bits **1** and **0** and SIN, CTS and RI from Port A, bits **5**, **0** and **1**.

In one embodiment, the 25 pin RS232 pin connector **204** is used instead a 9 pin connector, since this type of connector is more common. All the extra pins are not connected except the pins **1** and **7**, where pin **1** is chassis ground and pin **7** is a signal ground.

A static random access memory (SRAM) **208** connects to the microcontroller **200**. In one embodiment, the SRAM **208** is a 32 kx8 MT5LC2568 that is available from Micron Technology. The SRAM **208** is also available from other memory manufacturers. An external address register **206**, such as an ABT374, available from Texas Instruments is used for latching the higher addressing bits (A8–A14) of the address for the SRAM **208** so as to expand the address to fifteen bits. The SRAM **208** is used to store system status data, system log data from the NVRAM **112** (FIG. 1), and other message data for transfer to the external interface port **204** or to a microcontroller on the microcontroller bus **160** (FIG. 2).

Port D of the microcontroller **200** is the address port. Port B is the data bus for the bi-directional data interconnect. Port E is for the SRAM enable, output tristate and write control signals. The microcontroller **200** operates at a frequency of 12 MHz.

An Erasable Programmable Read Only Memory (EPROM) **212** is used for storing board serial number identification information for the RIB **104**. The serial number memory **212** is signal powered, retaining the charge into a capacitor sourced through the data line. In one embodiment, the serial number memory **212** stores eight sixteen-byte serial/revision numbers (for maintaining the rework/revision history) and is a DS2502 chip available from Dallas Semiconductor. The programming of memory **212** is handled using a jumper applied through an external connector J1 210. The serial number memory **212** connects to the microcontroller **200** at Port C, bit **6** and to the external connector J1 210.

The RIB **104** may be powered through a 7.5 Volt/800 mA supply unit that plugs into a connector J2 220. In one embodiment, the supply unit is 120 Volt AC to DC wall adapter. Connector J2 220 feeds a LT1376 high frequency switching regulator **222**, available from Linear Technology, which regulates the power source. The regulated power output is used locally by the components on the RIB **104**, and 300 mA are sourced to the microcontroller network **102** through a 300 mA fuse **224** and the RJ-45 connector **226**. Thus, the output of the regulator **222** provides an alternative source for a bias-powered partition of the microcontroller network **102**. The bias-powered partition includes the system recorder **110** (FIG. 1), the NVRAM **112** and the Chassis controller **170** (FIG. 2) which are resident on the server backplane **152**.

V. REMOTE INTERFACE SERIAL PROTOCOL

The microcontroller network remote interface serial protocol communicates microcontroller network messages across a point-to-point serial link. This link is between the RIB controller **200** that is in communication with the Recovery Manager **130** at the remote client **122/124**. This protocol encapsulates microcontroller network messages in a transmission packet to provide error-free communication and link security.

In one embodiment, the remote interface serial protocol uses the concept of byte stuffing. This means that certain byte values in the data stream have a particular meaning. If that byte value is transmitted by the underlying application as data, it must be transmitted as a two-byte sequence.

The bytes that have a special meaning in this protocol are:

SOM **306** Start of a message

EOM **316** End of a message

SUB The next byte in the data stream must be substituted before processing.

INT **320** Event Interrupt

Data **312** An entire microcontroller network message

As stated above, if any of these byte values occur as data in a message, a two-byte sequence must be substituted for that byte. The sequence is a byte with the value of SUB, followed by a type with the value of the original byte, which is incremented by one. For example, if a SUB byte occurs in a message, it is transmitted as a SUB followed by a byte that has a value of SUB+1.

Referring to FIG. 4, the two types of messages **300** used by the remote interface serial protocol will be described.

1. Requests **302**, which are sent by remote management (client) computers **122/124** (FIG. 1) to the remote interface **104**.

2. Responses **304**, which are returned to the requester **122/124** by the remote interface **104**.

The fields of the messages are defined as follows:

SOM **306** A special data byte value marking the start of a message.

EOM **316** A special data byte value marking the end of a message.

Seq.# **308** A one-byte sequence number, which is incremented on each request. It is stored in the response.

TYPE **310** One of the following types of requests:

IDENTIFY Requests the remote interface to send back identification information about the system to which it is connected. It also resets the next expected sequence number. Security authorization does not need to be established before the request is issued.

SECURE Establishes secure authorization on the serial link by checking password security data provided in the message with the microcontroller network password.

UNSECURE Clears security authorization on the link and attempts to disconnect it. This requires security authorization to have been previously established.

MESSAGE Passes the data portions of the message to the microcontroller network for execution. The response from the microcontroller network is sent back in the data portion of the response. This requires security authorization to have been previously established.

POLL Queries the status of the remote interface. This request is generally used to determine if an event is pending in the remote interface.

STATUS **318** One of the following response status values:

OK Everything relating to communication with the remote interface is successful.

OK_EVENT Everything relating to communication with the remote interface is successful. In addition, there is one or more events pending in the remote interface.

SEQUENCE The sequence number of the request is neither the current sequence number or retransmission request, nor the next expected sequence number or new request. Sequence numbers may be reset by an IDENTIFY request.

CHECK The check byte in the request message is received incorrectly.

FORMAT Something about the format of the message is incorrect. Most likely, the type field contains an invalid value.

SECURE The message requires that security authorization be in effect, or, if the message has a TYPE value of SECURE, the security check failed.

Check **314** Indicates a message integrity check byte. Currently the value is 256 minus the sum of previous bytes in the message. For example, adding all bytes in the message up to and including the check byte should produce a result of zero (0).

INT **320** A special one-byte message sent by the remote interface when it detects the transition from no events pending to one or more events pending. This message can be used to trigger reading events from the remote interface. Events should be read until the return status changes from OK_EVENT to OK.

VI. RIB MICROCONTROLLER OPERATION

The remote interface is the bridge to link the microcontroller bus to the outside world via a RS232 serial port through which a client computer can be connected. A message from the remote client side via RS232 usually starts with the "Identify" command which identifies the system name. See the message format associated with FIG. 4, above. The "Identify" command should be followed by the "Security" command with a password that is checked against the password stored in the NVRAM **112** (FIG. 1). If the passwords match, the remote RS232 link is put in "secure mode" and the remote interface **104** (FIG. 1) will now pass any "message" commands on to the microcontroller network bus **160** (FIG. 2). Before the remote application program disconnects the link, it should send the "Unsecure" command to take the RS232 link out of "secure mode".

Referring to FIGS. 5a and 5b, embodiments of the RIB microcontroller process **400** will be described. The process **400** is implemented as a computer program, termed firmware, written in PIC assembly language. The assembled machine code is stored in the microcontroller EPROM where each instruction is fetched for execution by the processor. The EPROM provides 4K×14 program memory space, all on-chip. Program execution is using the internal memory. Of course, any of a variety of general purpose and special purpose processors could be used and the programming of the process **400** could be in high level code such as C or Java.

Beginning at an initialize PIC state **402**, process **400** initializes the variables, stack pointer, and other structures of the RIB microcontroller **200** (FIG. 3). Moving to state **404**, a return point called "main" is identified in process **400**. Proceeding to a decision state **406**, process **400** determines if the RS232 port is transmitting data. If so, process **400**

moves to state **408** to send a character (one byte) if there is data in the SRAM **208** to be sent out on the RS232 port **204**. A process of receiving data via the RS232 port **204** is not shown herein. Receiving data via the port **204** is initiated by the use of an interrupt.

At the completion of state **408**, or if decision state **406** evaluates to a false condition, process **400** proceeds to a Check Modem Status function **410** that is implemented as a modem dialing and answering state machine. Function **410** checks the status of the modem **126** for any possible activity. Function **410** will be further described in conjunction with FIG. 6. Advancing to a decision state **412**, process **400** determines if any server event is pending. Event types include, for example, CPU status change, power status change, canister status change, fan status change, temperature, and operating system timeout. If an event is pending, process **400** proceeds to state **414** and sends an event message to the client computer **122/124** via the RS232 port. If no event is pending, as determined at decision state **412**, process **400** continues at a decision state **416**. At decision state **416**, process **400** checks to see if a RS232 remote message has been received from the client computer **122/124**. If not, process **400** moves back to the "main" loop **404**, as described above. One reason that a message has not been received yet is that the modem is not yet transmitting.

If a message has been received, as determined at decision state **416**, process moves to the appropriate state **420–426** to handle one of four command types: Identify, Secure, Unsecure, and Message. At state **420**, process **400** performs the Identify command and identifies the system by responding with the system name retrieved from the System Recorder memory **112** (FIG. 1).

At state **422**, process **400** performs the Secure command and gets the password with the command and checks it against the password from the NVRAM **112** (FIG. 1). If the passwords match, the access right is granted (opens secure mode), otherwise, reject the intent.

At state **424**, process **400** performs the Unsecure command and releases the remote access right, i.e., closes secure mode. At the completion of states **420**, **422** or **424**, process **400** proceeds through off-page connector E **430** to state **438** (FIG. 5b).

At state **426** on FIG. 5b (through off-page connector D **418**), process **400** performs the Message command and gets remote message data from the RIB SRAM **208** (FIG. 3). Proceeding to a decision state **432**, process **400** determines if this message command is for the remote interface **104**. If it is, process **400** executes the internal remote interface function command, such as a Read Revision of the RIB command. If the message command is not for the remote interface, as determined by decision state **432**, process **400** moves to state **436** and passes the message command to its destination (external to the remote interface) via the microcontroller bus. This facilitates communication with another microcontroller for a command to read or write information, for example.

At the completion of states **420**, **422**, **424**, **434** or **436**, process **400** advances to state **438** and stores the response data for the command into the SRAM **208** (FIG. 3) to be sent back to the client computer **122/124**. Moving to state **440**, process **400** transmit the first byte of data back on the RS232 port **204** to the client computer **122/124**. After the byte of data has been transmitted at state **440**, process **400** moves back to the "main" loop **404** (on FIG. 5a), as described above.

Referring to FIG. 6, embodiments of the Check Modem Status function **410** will now be described. Function **410** is

implemented as a modem dialing and answering state machine. Several terms useful for understanding of the modem dialing and answering state machine are listed in Table 3 below.

TABLE 3

Modem Term	Meaning
CTS	clear to send
DCD	data carrier detect
DSR	data set ready
DTR	data transfer ready
RTS	request to send
EOS	end of string
Protocol	indicates whether RS232 serial data uses the messaging protocol or whether the data is a string of bytes
Ring	modem is detecting an incoming ring signal from another modem
Local	a connection to a local client computer (no modem used)
Modem Mode	modem to modem connection
Modem Already Set	modem initialization string has already been sent and completed

State machine **410** includes nine states, states **470–486**. State **470** denotes that the modem is disconnected, DTR and RTS are clear and the protocol is clear. Protocol is clear indicates that no message protocol processing is to occur for bytes on the RS232 link (because it would affect transmitting and receiving of modem control string bytes). The state machine **410** remains at the Modem Disconnect state **470** while CTS is clear OR there have been “n” dialing retries already OR there is no Ring OR DSR is clear. If DSR is set (active), the state machine **410** proceeds to a Local Modem state **486**, wherein RTS and DTR are set. The state machine **410** remains at state **486** while DSR is set. Is DSR clears or if Local AND Modem Mode are both set, the state machine **410** returns to Modem Disconnect state **470**.

The state machine **410** proceeds to Modem Soft Reset state **472** if a Call Out condition OR a Setup condition is achieved. Call Out is achieved if Modem Mode is set AND Modem Already Set is set AND CTS is set AND there have not been “n” dialing retries already. Setup is achieved if Modem Mode is set AND Modem Already Set is clear AND CTS is set. At Modem Soft Reset state **472**, DTR is set and RTS is set. The state machine **410** remains at state **472** while Send String Done is clear, i.e., the modem command string is still being sent to the modem.

The state machine **410** proceeds to Modem Test state **474** when Send String Done is set. The state machine **410** remains at state **474** while Send String Done is clear. The state machine **410** proceeds to Modem Result Code state **476** when Send String Done is set. The state machine **410** remains at state **476** while Modem Result Status Done is clear, i.e., the results status of the modem test at state **474** is not yet available.

The state machine **410** returns to Modem Disconnect state **470** from state **476** if Results Status OK is clear, i.e., the results status is not OK. However, if Results Status OK is set, i.e., the results status is correct, the state machine **410** proceeds to a Modem Setup state **478**, wherein Modem Already Set is set. The state machine **410** returns to Modem Disconnect state **470** from state **478** if there have been “n” dialing retries already. However, if there have not been “n” dialing retries already, the state machine **410** proceeds to a Modem Dialing state **480**, wherein the modem is dialed.

The state machine **410** remains at state **480** while the previous EOS has not been reached AND two seconds have not passed. The state machine **410** returns to Modem Dis-

connect state **470** from state **480** if Dial OK is clear, i.e., dialing the modem was not successful. However, if Dial OK is set, i.e., dialing the modem was successful, the state machine **410** proceeds to a Modem Answering state **482**. Another path to the Modem Answering state **482** is from the Modem Disconnect state **470** when a Ringing mode is achieved. Ringing mode is achieved if Modem Mode is set AND Modem Already Set is set AND CTS is set AND Ring is set. The state machine **410** remains at state **482** while DSR is clear OR DCD is clear. The state machine **410** returns to Modem Disconnect State **470** from state **482** if DCD is clear and a timeout occurs, i.e., no DCD is set within a timeout period (nobody answers). The state machine **410** proceeds to Remote Modem state **484** when DSR is set AND DCD is set. The modem transfers message data while at this state. When DCD clears, the state machine **410** returns to Modem Disconnect state **470** from state **484** or otherwise remains at state **484**.

While the above detailed description has shown, described, and pointed out the fundamental novel features of the invention as applied to various embodiments, it will be understood that various omissions and substitutions and changes in the form and details of the system illustrated may be made by those skilled in the art, without departing from the intent of the invention.

Appendix A

Incorporation by Reference of Commonly Owned Applications

The following patent applications, commonly owned and filed Oct. 1, 1997, are hereby incorporated herein in their entirety by reference thereto:

Title	Application Ser. No.
“Method of Remote Access and Control of Environmental Management”	08/942,215
“System for Independent Powering of Diagnostic Processes on a Computer System”	08/942,410
“Method of Independent Powering of Diagnostic Processes on a Computer System”	08/942,320
“Diagnostic and Managing Distributed Processor System”	08/942,402
“Method for Managing a Distributed Processor System”	08/942,448
“System for Mapping Environmental Resources to Memory for Program Access”	08/942,222
“Method for Mapping Environmental Resources to Memory for Program Access”	08/942,214
“Hot Add of Devices Software Architecture”	08/942,309
“Method for The Hot Add of Devices”	08/942,306
“Hot Swap of Devices Software Architecture”	08/942,311
“Method for The Hot Swap of Devices”	08/942,457
“Method for the Hot Add of a Network Adapter on a System Including a Dynamically Loaded Adapter Driver”	08/943,072
“Method for the Hot Add of a Mass Storage Adapter on a System Including a Statically Loaded Adapter Driver”	08/942,069
“Method for the Hot Add of a Network Adapter on a System Including a Statically Loaded Adapter Driver”	08/942,465
“Method for the Hot Add of a Mass Storage Adapter on a System Including a Dynamically Loaded Adapter Driver”	08/962,963
“Method for the Hot Swap of a Network Adapter on a System Including a Dynamically Loaded Adapter Driver”	08/943,078
“Method for the Hot Swap of a Mass	08/942,336

-continued

Title	Application Ser. No.
Storage Adapter on a System Including a Statically Loaded Adapter Driver	
"Method for the Hot Swap of a Network Adapter on a System Including a Statically Loaded Adapter Driver"	08/942,459
"Method for the Hot Swap of a Mass Storage Adapter on a System Including a Dynamically Loaded Adapter Driver"	08/942,458
"Method of Performing an Extensive Diagnostic Test in Conjunction with a BIOS Test Routine"	08/942,463
"Apparatus for Performing an Extensive Diagnostic Test in Conjunction with a BIOS Test Routine"	08/942,163
"Configuration Management Method for Hot Adding and Hot Replacing Devices"	08/941,268
"Configuration Management System for Hot Adding and Hot Replacing Devices"	08/942,408
"Apparatus for Interfacing Buses"	08/942,382
"Method for Interfacing Buses"	08/942,413
"Computer Fan Speed Control Device"	08/942,447
"Computer Fan Speed Control Method"	08/942,216
"System for Powering Up and Powering Down a Server"	08/943,076
"Method of Powering Up and Powering Down a Server"	08/943,077
"System for Resetting a Server"	08/942,333
"Method of Resetting a Server"	08/942,405
"System for Displaying Flight Recorder"	08/942,070
"Method of Displaying Flight Recorder"	08/942,068
"Synchronous Communication Interface"	08/943,355
"Synchronous Communication Emulation"	08/942,004
"Software System Facilitating the Replacement or Insertion of Devices in a Computer System"	08/942,317
"Method for Facilitating the Replacement or Insertion of Devices in a Computer System"	08/942,316
"System Management Graphical User Interface"	08/943,357
"Display of System Information"	08/942,195
"Data Management System Supporting Hot Plug Operations on a Computer"	08/942,129
"Data Management Method Supporting Hot Plug Operations on a Computer"	08/942,124
"Alert Configurator and Manager"	08/942,005
"Managing Computer System Alerts"	08/943,356
"Computer Fan Speed Control System"	08/940,301
"Computer Fan Speed Control System Method"	08/941,267
"Black Box Recorder for Information System Events"	08/942,381
"Method of Recording Information System Events"	08/942,164
"Method for Automatically Reporting a System Failure in a Server"	08/942,168
"System for Automatically Reporting a System Failure in a Server"	08/942,384
"Expansion of PCI Bus Loading Capacity"	08/942,404
"Method for Expanding PCI Bus Loading Capacity"	08/942,223
"System for Displaying System Status"	08/942,347
"Method of Displaying System Status"	08/942,071
"Fault Tolerant Computer System"	08/942,194
"Method for Hot Swapping of Network Components"	08/943,044
"A Method for Communicating a Software Generated Pulse Waveform Between Two Servers in a Network"	08/942,221
"A System for Communicating a Software Generated Pulse Waveform Between Two Servers in a Network"	08/942,409
"Method for Clustering Software Applications"	08/942,318
"System for Clustering Software Applications"	08/942,411
"Method for Automatically Configuring a Server after Hot Add of a Device"	08/942,319

-continued

Title	Application Ser. No.
"System for Automatically Configuring a Server after Hot Add of a Device"	08/942,331
"Method of Automatically Configuring and Formatting a Computer System and Installing Software"	08/942,412
"System for Automatically Configuring and Formatting a Computer System and Installing Software"	08/941,955
"Determining Slot Numbers in a Computer"	08/942,462
"System for Detecting Errors in a Network"	08/942,169
"Method of Detecting Errors in a Network"	08/940,302
"System for Detecting Network Errors"	08/942,407
"Method of Detecting Network Errors"	08/942,573

APPENDIX B

Provisional Patent Application 6391-710:
 Title: REMOTE ACCESS AND CONTROL OF ENVIRONMENTAL MANAGEMENT SYSTEM

Invs: Karl Johnson
 Tahir Sheik

The following documents are attached and form part of this disclosure:

1. *Maestro Recovery Manager Analysis-Problem Statement*, pp.1-10.

2. *Remote Interface Board Specification*, Revision 2 13-000072-01, Jun. 21, 1996, pp. 1-11.

Multiple Node Service Processor Network

A means is provided by which individual components of a system are monitored and controlled through a set of independent, programmable microcontrollers interconnected through a network. Further means are provided to allow access to the microcontrollers and the interconnecting network by software running on the host processor.

Fly-by-wire

A means is provided by which all indicators, push buttons and other physical control means are actuated via the multiple node service processor network. No indicators, push buttons or other physical control means are physically connected to the device which they control, but are connected to a microcontroller, which then actuates the control or provides the information being monitored.

Self-Managing Intelligence

A means is provided by which devices are managed by the microcontrollers in a multiple node service processor network by software running on one or more microcontrollers, communicating via the interconnecting network. Management of these devices is done entirely by the service processor network, without action or intervention by system software or an external agent.

Flight Recorder

A means is provided for recording system events in a non-volatile memory, which may be examined by external agents. Such memory may be examined by agents external to the network interconnecting the microcontrollers.

Replicated components: no single point of failure

A means is provided by which no single component failure renders the monitoring and control capability of the system inoperable.

Extension by serial or modem gateway

A means is provided allowing an external agent to communicate with the microcontrollers by extending the interconnecting network beyond the physical system.

The following provisional patent applications, commonly owned and filed on the same day as the present application, are related to the present application and are incorporated by reference:

COMPUTER SYSTEM HARDWARE INFRASTRUCTURE FOR HOT PLUGGING MULTI-FUNCTION PCI CARDS WITH EMBEDDED BRIDGES (6391-704); invented by:

Don Agneta
 Stephen E. J. Papa
 Michael Henderson
 Dennis H. Smith
 Carlton G. Amdahl
 Walter A. Wallach

COMPUTER SYSTEM HARDWARE INFRASTRUCTURE FOR HOT PLUGGING SINGLE AND MULTI-FUNCTION PC CARDS WITHOUT EMBEDDED BRIDGES (6391-705); invented by:

Don Agneta
 Stephen E. J. Papa
 Michael Henderson
 Dennis H. Smith
 Carlton G. Amdahl
 Walter A. Wallach

ISOLATED INTERRUPT STRUCTURE FOR INPUT/OUTPUT ARCHITECTURE (6391-706); invented by:

Dennis H. Smith
 Stephen E. J. Papa

THREE BUS SERVER ARCHITECTURE WITH A LEGACY PCI BUS AND MIRRORED I/O PCI BUSES (6391-707); invented by:

Dennis H. Smith
 Carlton G. Amdahl

Don Agneta

HOT PLUG SOFTWARE ARCHITECTURE FOR OFF THE SHELF OPERATING SYSTEMS (6391-708); invented by:

Walter A. Wallach
 Mehrdad Khalili
 Mallikarunan Mahalingam
 John Reed

REMOTE SOFTWARE FOR MONITORING AND MANAGING ENVIRONMENTAL MANAGEMENT SYSTEM (6391-709); invented by:

Ahmad Nouri

REMOTE ACCESS AND CONTROL OF ENVIRONMENTAL MANAGEMENT SYSTEM (6391-710); invented by:

Karl Johnson
 Tahir Sheik

HIGH PERFORMANCE NETWORK SERVER SYSTEM MANAGEMENT INTERFACE (6391-711); invented by:

Srikumar Chari
 Kenneth Bright

Bruno Sartirana

CLUSTERING OF COMPUTER SYSTEMS USING UNIFORM OBJECT NAMING AND DISTRIBUTED SOFTWARE FOR LOCATING OBJECTS (6391-712); invented by:

Walter A. Wallach
 Bruce Findley

MEANS FOR ALLOWING TWO OR MORE NETWORK INTERFACE CONTROLLER CARDS TO APPEAR AS ONE CARD TO AN OPERATING SYSTEM (6391-713); invented by:

5 Walter A. Wallach

Mallikarunan Mahalingam

HARDWARE AND SOFTWARE ARCHITECTURE FOR INTER-CONNECTING AN ENVIRONMENTAL MANAGEMENT SYSTEM WITH A REMOTE INTERFACE (6391-714); invented by:

10 Karl Johnson

Walter A. Wallach

Dennis H. Smith

15 Carl G. Amdahl

SELF MANAGEMENT PROTOCOL FOR A FLY-BY-WIRE SERVICE PROCESSOR (6391-715); invented by:

Karl Johnson

20 Walter A. Wallach

Dennis H. Smith

Carl G. Amdahl

Problem Statement

Introduction

25 Maestro Recovery Manager(MRM) is a software which locally or remotely manage a Raptor when a server is down or up, operating system died, LAN communication failed, or other server components failed.

User will be able to manage the server in very simple, usable, and friendly GUI environment. MRM use modem for remote and serial communication port for local to communicate with server for diagnostic and recovery.

30 Primary role of remote management is diagnosing and restoring service as quickly as possible in case of a service failure.

35 System administrator, LAN administrator in customer shop and NetFrame Technical support will be primary user for the system.

Requirement Sources

40 MRM requirement comes from the following

1—Focus Group (Customer Support and Training)

2—User Walkthrough held by MRM team and Customer Support in December 1996

3—Down System Management Road map (96)

This road map is preliminary road map combined with Up System Management road map.

4—MRM Road Map 97-98

This Road Map presented to Engineering Council Meeting on Mar. 10, 1997.

5—Raptor System, A Bird's Eye View.

6—Raptor Wire Service Architecture

The following requirements have been identified for MRM

55 Support Remote Management for Diagnostic and Recovery

Remote Management cover remote access to the Raptor Out Of Band management features. Remote Management will use Out of Band ,Control Diagnostic and Monitor Subsystem (CDM) remote management to cover the other high value added remote management functions. primary role of remote management is diagnosing and restoring service as quickly as possible in case of service failure.

60 Support Remote Management . . . (continue)

The control of Raptor is completely "Fly By Wire"—i.e. no physical switch directly controls any function and no indicator is directly controlled by system hardware. All such functions referred to as "Out of Band" functions are con-

trolled through a CDM. CDM basic functions are available so long as A/C power is available at the input to any of the power supplies.

CDM Subsystem supervises or monitors the following system features.

Power supplies—Presence, status, A/C good, Power on/off and output voltage.

Environment—Ambient and exhaust temperatures, Fan speed, speed control, Fan fault and overtemp indicators.

Processor—CPU Presence, Power OK, Overtemp and Fault, NMI control, System reset Memory type/ location and Bus/Core speed ratio.

I/O—I/O canister insertion/removal and status indicator, PCI card presence, PCI card power and smart I/O processor Out Of Band control.

Historical—Log of all events, Character mode screen image, and Serial number

Support for Object Oriented Graphic User Interface

OO-GUI is graphic user interface with the following characteristic.

User task oriented

It uses tasks which user familiar and daily working with. User does not need to learn the task

User objects

It uses objects which user working with during her or his daily work.

Simplicity and useability

It is very simple to use and does not need long learning period.

Point and click with context sensitive help

Context sensitive help and point and click will help user to be very productive and get any information he needs on specific object or field or subject.

Drag and drop

Drag and Drop capability works with user object very well to accomplish the tasks.

Release Requirements (MRM V2.0, 4Q96)

Maestro Recovery Manager (MRM)will support the following features locally through serial port and Wire Service Remote Interface card on the Raptor 16.

MRM provide user friendly GUI with post and click capability to perform the following tasks which reviewed and accepted by the Focus Group for 4Q96 release.

Power On/Off

MRM support Power On/Off the server.

User can do this task by right mouse click on the server object in the screen and see the result.

Display Flight Recorder.

While the server is working, Wire Service record all the server information in the 64K NVRAM. After the server failed, MRM will display the system log recorded in the NVRAM. User can evaluate the information and find the cause for the server failure. This can be done by right mouse click on the Flight Recorder object in the screen.

System Reset

MRM support rebooting the server by right mouse click on the server object in the screen. This is warm reboot of the server and works as pushing the “reset” button on the server.

Save

MRM will support saving Flight Recorder data, so user can send the file to the technical support for further diagnostic and recovery. It also can save the response for any Wire Service command failure.

On Line help

MRM will support online help contains overview, Getting Started, MRM tasks, Diagnostic and Recovery, and BIOS help.

B0back plane support

MRM will support the server with B0back plane. Server with B0back plane display wrong time stamp. MRM uses NetWare 4.11 Operating system time stamp to display correct time stamp.

Release Requirements (MRM V2.1, 1Q97)

Maestro Recovery Manager (MRM) will support Raptor16 Phase 2 for next release as follow. This release will delivered to customer by NetFrame Customer Support on CD.

MRM V2.1

MRM V 2.1 will support the MRM V2.0 plus the following new features for next release.

User Walkthrough Requirements held on Dec. 17, 1996

Recovery and Diagnostic help.

This help enable the user to display help based on message source or severity (fatal error, error, warning,).

In each case the help inform the user the cause for the error and what steps to take to solve the problem.

C0/E18 back plane support

New C0 back plane Wire Service, Diagnostic, and BIOS message structure

Release Requirements (MRM V2.2, 2Q97)

MRM V2.2 for Raptor 16

MRM V2.2 will support MRM V2.1 plus the following new features.

Remote connection via modem

MRM supports remote connection to an NF9000-16 via an external modem. MRM needs one external modem for client side and one external modem for the server side. The client modem can be installed and set up via the Windows NT/95 standard control panel/Modems installation. The server side modem has to be set up and connected to the server. Details of installation and setup for the modem are provided in the

NF9000 Maestro Recovery Manager Installation Guide.

MRM does not support internal modems.

The following external Hayes compatible modems have been tested and worked with MRM.

Client Modem

US Robotics Sportster 33.6 Fax modem

ZOOM fax MODEM V.34X 33.6

Server Modem

ZOOM fax MODEM V.34X 33.6

System Status

MRM supports retrieve and update of the system status components.

System status comprised of the following components.

Power Supplies

The following information will be displayed for this feature.

1. Presence

2. Status(ACOK,DCOK)

3. Power On/off

4. Output voltage (Analog measure of main supply+VREF)

Temperatures

We will support four types of temperature for 5 sensors and display Operating (10–35 degree C.) and None-operating (–40 to 70 degree C.).

1. Temperature of all sensors
2. Warning temperature
3. Shutdown temperature
4. System over temp

Fans

There are different type of fans in the system such as system fan and canister fan. All of them have the common following characteristics.

5. Speed (speed data)
6. Control (LOLIM, can be set to LOW or HIGH)
7. Fault (LED, Bits)

Processors

There are 4 CPU in the Raptor16 with the following parameters.

1. CPU presence
2. CPU Power OK
3. System over temp
4. System Fault

If system over temp or CPU internal error or system power failure. then wire service report System Fault

5. CPU Error

If internal CPU error occurred, then report CPU error

6. CPU NMI control
7. System Board Bus/Core speed ratio

I/O Canisters

There are four canisters available

1. I/O canister (insertion, removal)
This shows presence bits for canister.
2. PCI cards
This reflect PCI card slots [1–4] presence
3. PCI card power
This controls canister PCI slot power

Serial Numbers

This is the last known serial data for the following server parts

1. Back plane
2. Canister 1–4
3. Remote Interface (not implemented)
4. System Board
5. Power supply 1–2

Revisions

MRM will support the following chips revision

1. Back Plane
2. System board
3. Power Supply 1–2
4. Canisters 1–4
5. Local Interface
6. Remote Interface

Context-sensitive Help

All elements in the window such as icon, entry field, push button, and radio button have context-sensitive help.

This help contains the following type.

What's this

It shows description of each elements in the window which it is not disabled. This can be accomplished by right mouse click on each element in the window.

Help push button.

This display general help for all windows.

F1 Key

The key displays the help for any entry field in the window.

Print MRM supports printing of flight recorder based on all messages, warning & errors, and errors with one type of font.

Password

Wire Service password is originally set by Manufacturing to "NETFRAME" (case sensitive) for every NF9000-16 server. MRM provides a password changing mechanism for the Wire Service system. For security purposes, MRM only allows the password to be changed via the local serial port connection and not via the remote connection

Support B0/E18 on NT4.0 server

MRM supports B0/E18 configurations by utilizing a time stamp software component which resides on the NT4.0 server.

Installation instructions for the time stamp are provided in the NTReadMe file on floppy disk packaged with MRM.

MRM requires the NetFRAME NT Value Add software to operate.

The NetFRAME NT Value Add software will automatically install the time stamp for you. If you have not installed NetFRAME NT Value Add, then you need to install the time stamp provided for you on the NTSup floppy disk.

Support for InstallShield

InstallShield setup software is used to install MRM on the client workstation.

Delivery

MRM package contains the following.

NF9000 Maestro Recovery Manager CD release.

This CD contains MRM software and documentation.

Two support floppy disks for NF9000-16 B0 back plane for NT and NetWare.

Boxes contain above items, Remote Interface Card, adapter, cables, and documentation.

Dependency

MRM version 2.2 depends on the following items:

Remote Interface chip provided by Wire Service(Firm Ware) department.

Remote Interface card provided by Hardware Engineering department.

Remote Interface boxes, cables, and power adapters provided by Manufacturing.

Release Requirements (MRM V2.2, 2Q97)

MRM V2.2 for Raptor 8

MRM V2.2 for Raptor 8 has the same features as MRM v2.2 for Raptor16 with the following different.

Support for C0 back plane and F18 BIOS

System Status

The following components of System Status are different from MRM V2.2 for Raptor16.

Power Supplies

1. User can not turn off and on specific power supply.
2. Raptor 8 has three power supply.
3. There are no DC (OK, BAD) for Raptor 8.
4. AC for all power supplies are good all the times.

Fans

1. Four system board fans in front
2. Two system board fans (Storage fans) in back
3. Group A and group B sharing two fans.

I/O Groups

1. Group A contains 4 PCI card sots
2. Group B contains 4 PCI card slots.

Serial Numbers

1. Serial number for Group A and B fans are the same.

25

- 2. There is serial number for power supply # 3.
- Revisions
- 1. Group A and B fans have the same revision.
 - 2. There is revision for power supply #3

Delivery

MRM package contains the following.

NF9000 Maestro Recovery Manager CD release.

This CD contains MRM software and documentation.

Boxes contain above items, Remote Interface Card, adapter, cables, and documentation.

What is claimed is:

1. A remote interface, comprising:

- a microcontroller;
- a microcontroller bus providing data communication among the microcontroller and other microcontrollers;
- a memory in data communication with the microcontroller;
- a first port, in data communication with the microcontroller, being capable of receiving and transmitting monitoring data external to the remote interface; and

26

- a second port capable of receiving and transmitting environmental conditions data, wherein the environmental conditions data corresponds to the environmental conditions of a computer, and wherein the second port includes connectivity to the microcontroller bus.
- 2. The remote interface of claim 1, wherein the microcontroller bus conforms to the Inter-Integrated Circuit (I²C) protocol.
- 3. The remote interface of claim 1, wherein the microcontroller bus conforms to the Controller Area Network (CAN) protocol.
- 4. The remote interface of claim 1, wherein the monitoring data is stored in the memory.
- 5. The remote interface of claim 1, wherein the first port receives a command from a client computer.
- 6. The remote interface of claim 5, wherein the command establishes security authorization.
- 7. The remote interface of claim 5, wherein the command requests data from the memory.
- 8. The remote interface of claim 5, wherein the command sends data to the microcontroller bus.

* * * * *