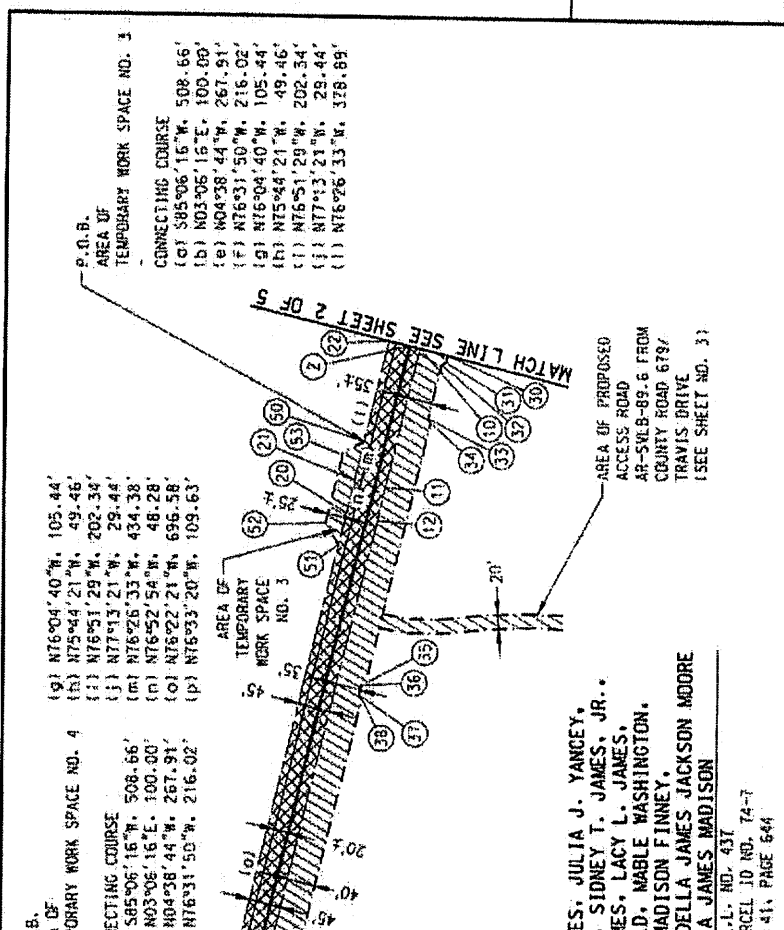


Exhibit 1



CARL L. TRAVIS
 L.L. NO. 436
 TAX PARCEL ID NO. 74-6
 INSTRUMENT NO. 010000046
 NB 36, PAGE 583

SILAS A. JAMES, JULIA J. YANCEY, NANNIE J. LASH, SIDNEY T. JAMES, JR., JOHN R. JAMES, LACY L. JAMES, ANITA SCOFFIELD, MABLE WASHINGTON, ANNIE MADISON FINNEY, ALFREDA MADISON, DELLA JAMES JACKSON MOORE AND LEILA JAMES MADISON
 L.L. NO. 437
 TAX PARCEL ID NO. 74-7
 NB 41, PAGE 644

WOOD GROUP MUSTANG, INC.
 COMPANY HEADQUARTERS
 PROJECT NO. 20403

TRANSCONTINENTAL GAS PIPE LINE COMPANY, LLC
 PROPOSED 24" PIPELINE "B"
 CROSSING THE PROPERTY OF
 SILAS A. JAMES, et al
 DISTRICT 06 MAGISTERIAL, BRUNSWICK COUNTY, VIRGINIA

THIS DRAWING CONSISTS OF FIVE SHEETS AND WILL BE VOID WITHOUT ALL SHEETS

SCALE IN FEET
 0 200 400 600

ISSUED FOR ACQUISITION
 CERTIFIED

DATE: 06/21/13
 DATE: 06/03/13
 DATE: 06/03/13

NO. 1116281

ISSUED FOR CONSTRUCTION
 DRAWING NUMBER 26-06-55/L-437-B-1

DATE: 06/21/13

SHEET 1 OF 8

NOTES:

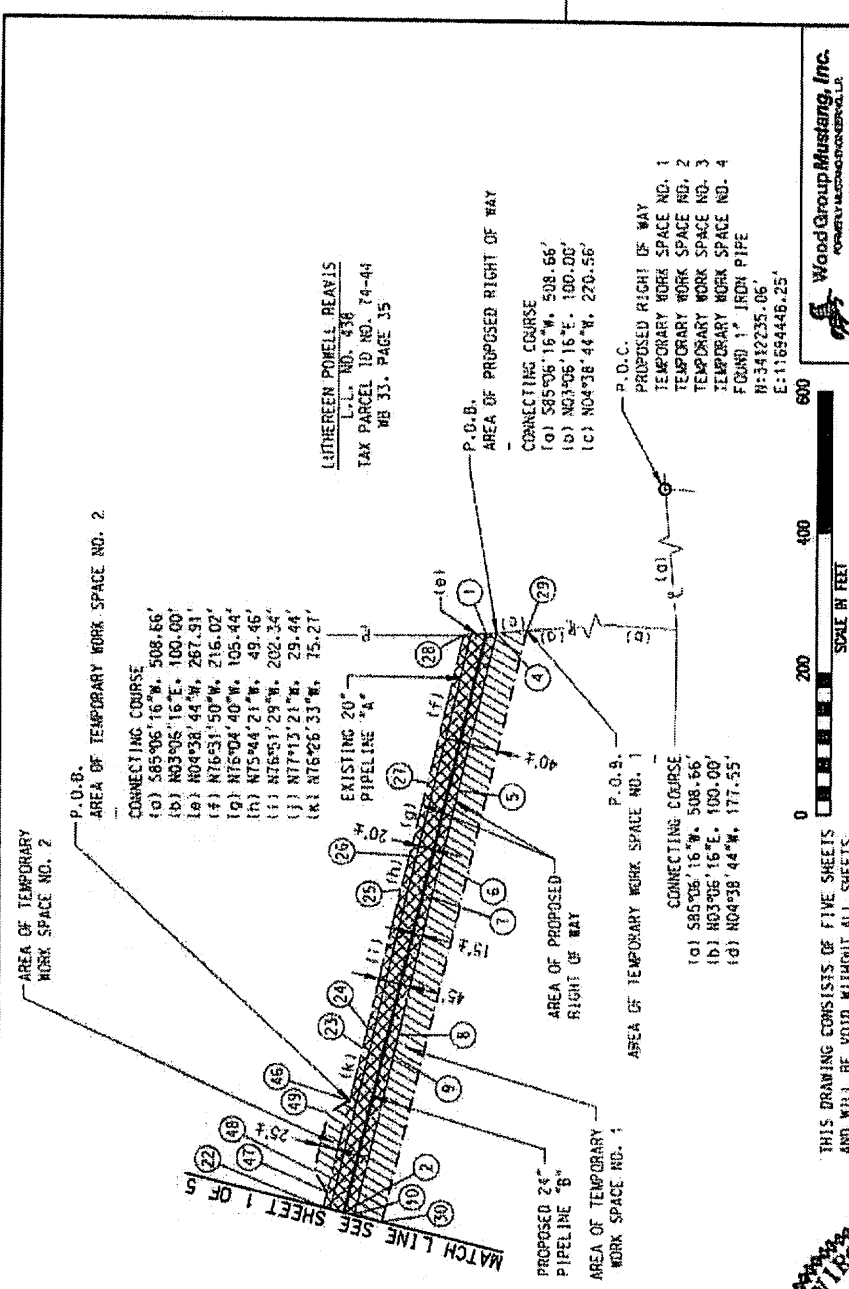
- BEARINGS AND COORDINATES SHOWN ARE BASED ON THE VIRGINIA STATE PLANE COORDINATE SYSTEM, NAD 83, SOUTH ZONE.
- LENGTH OF SURVEY LINE FOR PROPOSED 24" PIPELINE "B" 2550.93'
- AREA OF DISTURBANCE WITHIN THE PROPOSED RIGHT OF WAY 2.322 ACRES
- AREA OF TEMPORARY WORK SPACE NO. 1 2.214 ACRES
- AREA OF TEMPORARY WORK SPACE NO. 2 0.063 ACRES
- AREA OF TEMPORARY WORK SPACE NO. 3 0.072 ACRES
- AREA OF TEMPORARY WORK SPACE NO. 4 0.148 ACRES
- AREA OF PROPOSED ACCESS ROAD AR-SYLB-89.6 0.712 ACRES

1. HEREBY STATE THAT TO THE BEST OF MY KNOWLEDGE, INFORMATION, AND BELIEF, THE SURVEY SHOWN HEREON WAS MADE IN ACCORDANCE WITH THE MINIMUM STANDARDS AND PROCEDURES SET FORTH IN CHAPTER V OF THE REGULATIONS OF THE VIRGINIA BOARD FOR ARCHITECTS, PROFESSIONAL ENGINEERS, LAND SURVEYORS, CERTIFIED INTERIOR DESIGNERS AND LANDSCAPE ARCHITECTS.

PLS NO. 3181
 CHRIS R. ROBERTS
 HAYES, JAMES AND ASSOCIATES, INC.
 4145 SHACKLEFORD ROAD, SUITE 300
 NORCROSS, GA 30093

DATE: 4-27-14

CHRIS ROBERTS
 Lic. No 3181
 LAND SURVEYOR



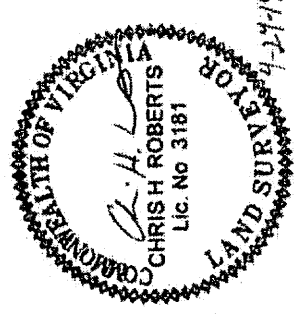
Wood Group Mustang, Inc.
 PROJECT NO. 20003

TRANSCONTINENTAL GAS PIPE LINE COMPANY, LLC
 PROPOSED 24" PIPELINE "B"
 CROSSING THE PROPERTY OF
 SILAS A. JAMES, et al
 DISTRICT 06 MAGISTERIAL, BRUNSWICK COUNTY, VIRGINIA

NO.	DATE	BY	REVISION DESCRIPTION	NO. OF SHEETS	DATE	DRWING BY	SCALE
0	05/05/13	RAB	ISSUED FOR ACQUISITION		05/21/13	PLH	1"=200'
1	04/29/14	GRK	CERTIFIED		06/03/13	MEH	
					06/03/13	JRY	

THIS DRAWING CONSISTS OF FIVE SHEETS
 AND WILL BE VOID WITHOUT ALL SHEETS

DRWING NO. _____
 REFERENCE TITLE _____



SILAS A. JAMES, JULIA J. YANCEY,
 NANWIE J. LASH, SIDNEY T. JAMES, JR.,
 JOHN R. JAMES, LACY L. JAMES,
 ANITA SCOFIELD, MABLE WASHINGTON,
 ANNIE MADISON FINNEY,
 ALFREDA MADISON, DELLA JAMES JACKSON MOORE
 AND LEILA JAMES MADISON
 L.L. NO. 437
 TAX PARCEL ID NO. 74-7
 WB 41, PAGE 644

LIDDEEN POWELL BEAVIS
 L.L. NO. 538
 TAX PARCEL ID NO. 74-44
 WB 33, PAGE 35

P.O.C.
 PROPOSED RIGHT OF WAY
 TEMPORARY WORK SPACE NO. 1
 TEMPORARY WORK SPACE NO. 2
 TEMPORARY WORK SPACE NO. 3
 TEMPORARY WORK SPACE NO. 4
 FOUND 1" IRON PIPE
 N=3412235.05'
 E=11654446.25'

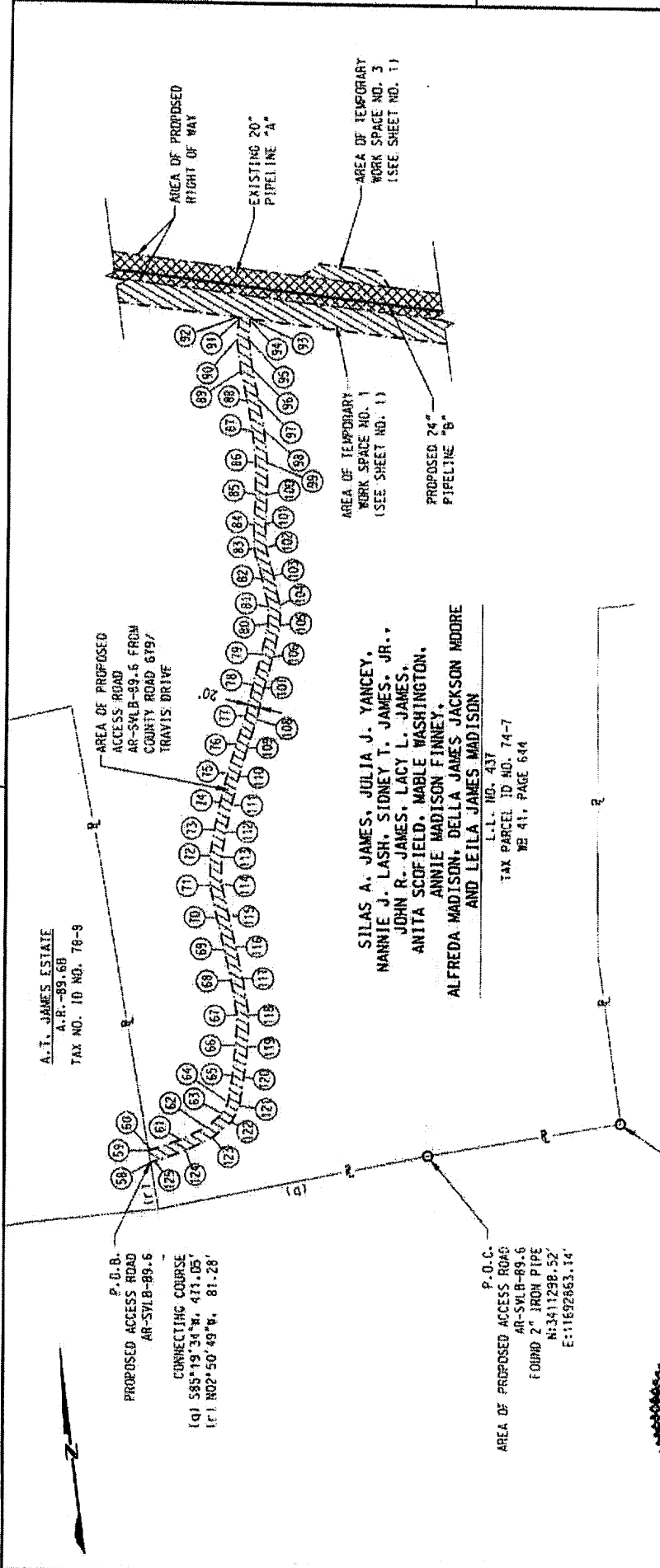
P.O.B.
 AREA OF PROPOSED RIGHT OF WAY
 CONNECTING COURSE
 (O) S85°06'16"W, 508.66'
 (B) N03°06'16"E, 100.00'
 (C) N04°38'44"W, 220.56'

P.O.B.
 AREA OF TEMPORARY WORK SPACE NO. 2
 CONNECTING COURSE
 (O) S85°06'16"W, 508.66'
 (B) N03°06'16"E, 100.00'
 (C) N04°38'44"W, 267.91'
 (F) N76°31'50"W, 216.02'
 (D) N76°04'40"W, 105.44'
 (R) N75°44'21"W, 49.46'
 (I) N75°31'29"W, 202.34'
 (J) N77°13'21"W, 29.44'
 (K) N76°26'33"W, 75.21'

P.O.B.
 AREA OF TEMPORARY WORK SPACE NO. 1
 CONNECTING COURSE
 (O) S85°06'16"W, 508.66'
 (B) N03°06'16"E, 100.00'
 (D) N04°38'44"W, 177.55'

MATCH LINE SEE SHEET 1 OF 5





A.T. JAMES ESTATE
A.R.-89.6B
TAX NO. 10 NO. 76-9

P.O.B.
PROPOSED ACCESS ROAD
AR-SVLB-89.5
CONNECTING COURSE
(Q) 585°19'34"W, 411.05'
(L) N02°50'49"W, 81.28'

SILAS A. JAMES, JULIA J. YANCEY,
MANNIE J. LASH, SIDNEY T. JAMES, JR.,
JOHN R. JAMES, LACY L. JAMES,
ANITA SCOFFIELD, MABLE WASHINGTON,
ANNIE MADISON FINNEY,
ALFREDA MADISON, DELLA JAMES JACKSON MOORE
AND LEILA JAMES MADISON

L.L. NO. 437
TAX PARCEL ID NO. 74-7
WB 41, PAGE 644

P.O.C.
AREA OF PROPOSED ACCESS ROAD
AR-SVLB-89.6
FOUND 2" IRON PIPE
N:3411298.52'
E:11692653.14'



THIS DRAWING CONSISTS OF FIVE SHEETS
AND WILL BE VOID WITHOUT ALL SHEETS

Wood Group Mustang, Inc.
PROPOSED 24" PIPELINE "B"
PROJECT NO. 2603

Williams
GAS PIPELINE

TRANSCONTINENTAL GAS PIPE LINE COMPANY, LLC
PROPOSED 24" PIPELINE "B"
CROSSING THE PROPERTY OF
SILAS A. JAMES, et al
DISTRICT 06 MAGISTERIAL, BRUNSWICK COUNTY, VIRGINIA

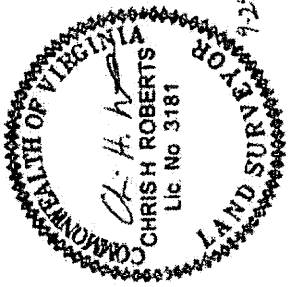
NO.	DATE	BY	REVISION DESCRIPTION	ISSUED FOR
0	06/05/13	BAR	ISSUED FOR ACQUISITION	ISSUED FOR BID
1	04/29/14	GBR	CERTIFIED	ISSUED FOR CONSTRUCTION

DATE: 06/21/13
CHECKED BY: MEH
APPROVED BY: JRY
NO: 1116291

DATE: 06/03/13
DRAWING NUMBER: 26-06-55/LL-437-B-3

SCALE: 1"=200'

SHEET 3 OF 5



LENGTH OF SURVEY LINE FOR PROPOSED 24" PIPELINE "B"

POINT NO.	BEARING	DISTANCE
1-2	N76°26'52"W	845.08'
2-3	N76°26'52"W	1405.85'

AREA OF PROPOSED RIGHT OF WAY

POINT NO.	BEARING	DISTANCE
4-5	N76°31'50"W	230.92'
5-6	N76°04'40"W	105.75'
6-7	N75°44'21"W	49.15'
7-8	N76°51'29"W	201.75'
8-9	N77°13'21"W	29.61'
9-10	N76°26'33"W	232.56'
10-11	N76°26'33"W	201.95'
11-12	N76°52'54"W	46.31'
12-13	N76°22'21"W	696.71'
13-14	N76°33'20"W	460.16'
14-15	N25°42'13"E	2.83'
15-16	N16°33'38"E	11.16'
16-17	N17°25'27"E	22.44'
17-18	N35°39'06"E	9.40'
18-19	S76°33'20"E	453.91'
19-20	S76°22'21"E	696.58'
20-21	S76°52'54"E	48.28'
21-22	S76°26'33"E	202.12'
22-23	S76°26'33"E	232.25'
23-24	S77°13'21"E	29.44'
24-25	S76°51'29"E	202.34'
25-26	S75°44'21"E	49.46'
26-27	S76°04'40"E	105.44'
27-28	S76°31'50"E	216.02'
28-4	S04°38'44"E	47.35'

AREA OF TEMPORARY WORK SPACE NO. 1

POINT NO.	BEARING	DISTANCE
29-30	N76°26'52"W	863.16'
30-31	N76°26'52"W	10.00'
31-32	N31°26'52"W	7.07'
32-33	N76°26'52"W	78.62'
33-34	S58°33'08"W	7.07'
34-35	N76°26'52"W	379.73'
35-36	N31°26'52"W	7.07'
36-37	N76°26'52"W	13.05'
37-38	S58°33'08"W	7.07'
38-39	N76°26'52"W	598.56'
39-40	S58°33'08"W	35.36'
40-41	N76°26'52"W	200.00'
41-42	N31°26'52"W	35.36'
42-43	N76°26'52"W	59.30'
43-44	N05°55'54"E	13.17'
44-45	N21°11'36"E	20.41'
45-14	N25°42'13"E	5.89'
14-13	S76°33'20"E	460.16'
13-12	S16°22'21"E	696.71'
12-11	S76°52'54"E	48.31'
11-10	S76°26'33"E	201.95'
10-9	S76°26'33"E	232.56'
9-8	S77°13'21"E	29.61'
8-7	S76°51'29"E	201.75'
7-6	S75°44'21"E	49.15'
6-5	S76°04'40"E	105.75'
5-4	S76°31'50"E	230.92'
4-29	S04°38'44"E	43.01'

AREA OF TEMPORARY WORK SPACE NO. 2

POINT NO.	BEARING	DISTANCE
46-47	N76°26'33"W	134.41'
47-48	N58°33'08"E	35.38'
48-49	S76°26'52"E	84.43'
49-46	S31°26'52"E	35.39'

AREA OF TEMPORARY WORK SPACE NO. 3

POINT NO.	BEARING	DISTANCE
50-21	N76°26'33"W	55.49'
21-20	N76°52'54"W	48.28'
20-51	N76°22'21"W	46.53'
51-52	N58°33'08"E	35.78'
52-53	S76°26'52"E	100.00'
53-50	S31°26'52"E	35.35'

AREA OF TEMPORARY WORK SPACE NO. 4

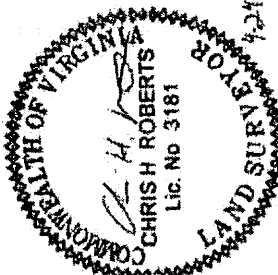
POINT NO.	BEARING	DISTANCE
54-55	N76°33'20"W	283.83'
55-56	N58°33'08"E	35.62'
56-57	S76°26'52"E	234.00'
57-54	S31°26'52"E	34.86'

THIS DRAWING CONSISTS OF FIVE SHEETS AND WILL BE VOID WITHOUT ALL SHEETS

WoodGroup Mustang, Inc.
CORPORATE ENGINEERING, L.P.
PROJECT NO. 2003

TRANSCONTINENTAL GAS PIPE LINE COMPANY, LLC
PROPOSED 24" PIPELINE "B"
CROSSING THE PROPERTY OF
SILAS A. JAMES, et al
DISTRICT 06 MAGISTERIAL, BRUNSWICK COUNTY, VIRGINIA

NO.	DATE	BY	REVISION DESCRIPTION	NO. NO.	CHK.	APP.	DATE	ISSUED FOR: RD.	SCALE	N/A
0	06/05/13	RAB	ISSUED FOR ACQUISITION				06/05/13	ISSUED FOR ACQUISITION		
1	04/29/14	GOR	CERTIFIED				06/05/13	ISSUING NUMBER	26-06-55/LL-437-B-4	SHEET 4
										OF 5



4-24-14

SILAS A. JAMES, et al
L. L. NO. 437

ALL THAT TRACT OR PARCEL OF LAND LYING OR BEING IN DISTRICT 6
MAGISTERIAL, BRUNSWICK COUNTY, VIRGINIA AND BEING MORE
PARTICULARLY DESCRIBED AS FOLLOWS:

PROPOSED RIGHT-OF-WAY - COMMENCE FROM AN IRON PIN FOUND (1 INCH IRON PIPE) ON THE SOUTHERLY PROPERTY LINE OF PROPERTY OWNED BY LUTHEREEN POWELL REAVIS HAVING A VIRGINIA STATE PLANE CORDINATE OF (N: 3412235.06', E: 11694448.25', NAD 83, SOUTH ZONE); THENCE ALONG SAID SOUTHERLY PROPERTY LINE SOUTH 85 DEGREES 06 MINUTES 16 SECONDS WEST A DISTANCE OF 508.66 FEET TO A POINT ON THE EASTERLY PROPERTY LINE OF THE GRANTOR; THENCE DEPARTING SAID SOUTHERLY PROPERTY LINE AND ALONG SAID EASTERLY PROPERTY LINE THE FOLLOWING TWO COURSES AND DISTANCES: NORTH 03 DEGREES 06 MINUTES 16 SECONDS EAST A DISTANCE OF 100.00 FEET TO A POINT; THENCE NORTH 04 DEGREES 38 MINUTES 44 SECONDS WEST A DISTANCE OF 220.56 FEET TO A POINT; SAID POINT BEING THE **POINT OF BEGINNING**; THENCE FROM THE POINT OF BEGINNING AS THUS ESTABLISHED AND DEPARTING SAID EASTERLY PROPERTY LINE NORTH 76 DEGREES 31 MINUTES 50 SECONDS WEST A DISTANCE OF 230.92 FEET TO A POINT; THENCE NORTH 76 DEGREES 04 MINUTES 40 SECONDS WEST A DISTANCE OF 105.75 FEET TO A POINT; THENCE NORTH 75 DEGREES 44 MINUTES 21 SECONDS WEST A DISTANCE OF 49.15 FEET TO A POINT; THENCE NORTH 76 DEGREES 51 MINUTES 29 SECONDS WEST A DISTANCE OF 201.75 FEET TO A POINT; THENCE NORTH 77 DEGREES 13 MINUTES 21 SECONDS WEST A DISTANCE OF 29.61 FEET TO A POINT; THENCE NORTH 76 DEGREES 26 MINUTES 33 SECONDS WEST A DISTANCE OF 232.56 FEET TO A POINT; THENCE NORTH 76 DEGREES 26 MINUTES 33 SECONDS WEST A DISTANCE OF 201.95 FEET TO A POINT; THENCE NORTH 76 DEGREES 52 MINUTES 54 SECONDS WEST A DISTANCE OF 48.31 FEET TO A POINT; THENCE NORTH 76 DEGREES 22 MINUTES 21 SECONDS WEST A DISTANCE OF 696.71 FEET TO A POINT; THENCE NORTH 76 DEGREES 33 MINUTES 20 SECONDS WEST A DISTANCE OF 460.16 FEET TO A POINT ON THE WESTERLY PROPERTY LINE OF THE GRANTOR; THENCE ALONG SAID WESTERLY PROPERTY LINE THE FOLLOWING FOUR COURSES AND DISTANCES: NORTH 25 DEGREES 42 MINUTES 13 SECONDS EAST A DISTANCE OF 2.83 FEET TO A POINT; THENCE NORTH 16 DEGREES 33 MINUTES 38 SECONDS EAST A DISTANCE OF 11.16 FEET TO A POINT; THENCE NORTH 17 DEGREES 25 MINUTES 27 SECONDS EAST A DISTANCE OF 22.44 FEET TO A POINT; THENCE NORTH 35 DEGREES 39 MINUTES 06 SECONDS EAST A DISTANCE OF 9.40 FEET TO A POINT; THENCE DEPARTING SAID WESTERLY PROPERTY LINE SOUTH 76 DEGREES 33 MINUTES 20 SECONDS EAST A DISTANCE OF 453.91 FEET TO A POINT; THENCE SOUTH 76 DEGREES 22 MINUTES 21 SECONDS EAST A DISTANCE OF 696.58 FEET TO A POINT; THENCE SOUTH 76 DEGREES 52 MINUTES 54 SECONDS EAST A DISTANCE OF 48.28 FEET TO A POINT; THENCE SOUTH 76 DEGREES 26 MINUTES 33 SECONDS EAST A DISTANCE OF 202.12 FEET TO A POINT; THENCE SOUTH 76 DEGREES 26 MINUTES 33 SECONDS EAST A DISTANCE OF 232.25 FEET TO A POINT; THENCE SOUTH 77 DEGREES 13

MINUTES 21 SECONDS EAST A DISTANCE OF 29.44 FEET TO A POINT; THENCE SOUTH 76 DEGREES 51 MINUTES 29 SECONDS EAST A DISTANCE OF 202.34 FEET TO A POINT; THENCE SOUTH 75 DEGREES 44 MINUTES 21 SECONDS EAST A DISTANCE OF 49.46 FEET TO A POINT; THENCE SOUTH 76 DEGREES 04 MINUTES 40 SECONDS EAST A DISTANCE OF 105.44 FEET TO A POINT; THENCE SOUTH 76 DEGREES 31 MINUTES 50 SECONDS EAST A DISTANCE OF 216.02 FEET TO A POINT ON THE EASTERLY PROPERTY LINE OF THE GRANTOR; THENCE ALONG SAID EASTERLY PROPERTY LINE SOUTH 04 DEGREES 38 MINUTES 44 SECONDS EAST A DISTANCE OF 47.35 FEET TO THE **POINT OF BEGINNING**.

SAID TRACT OR PARCEL OF LAND CONTAINS 2.322 ACRES (BEING 101,128 SQUARE FEET) AS SHOWN ON DRAWING NUMBER 26-06-55/LL-437-B-1 & 437-B-2.

PROPOSED TEMPORARY WORK SPACE NO. 1 - COMMENCE FROM AN IRON PIN FOUND (1 INCH IRON PIPE) ON THE SOUTHERLY PROPERTY LINE OF PROPERTY OWNED BY LUTHEREEN POWELL REAVIS HAVING A VIRGINIA STATE PLANE CORDINATE OF (N: 3412235.06', E: 11694448.25', NAD 83, SOUTH ZONE); THENCE ALONG SAID SOUTHERLY PROPERTY LINE SOUTH 85 DEGREES 06 MINUTES 16 SECONDS WEST A DISTANCE OF 508.66 FEET TO A POINT ON THE EASTERLY PROPERTY LINE OF THE GRANTOR; THENCE DEPARTING SAID SOUTHERLY PROPERTY LINE AND ALONG SAID EASTERLY PROPERTY LINE THE FOLLOWING TWO COURSES AND DISTANCES: NORTH 03 DEGREES 06 MINUTES 16 SECONDS EAST A DISTANCE OF 100.00 FEET TO A POINT; THENCE NORTH 04 DEGREES 38 MINUTES 44 SECONDS WEST A DISTANCE OF 177.55 FEET TO A POINT; SAID POINT BEING THE **POINT OF BEGINNING**; THENCE FROM THE POINT OF BEGINNING AS THUS ESTABLISHED DEPARTING SAID EASTERLY PROPERTY LINE NORTH 76 DEGREES 26 MINUTES 52 SECONDS WEST A DISTANCE OF 863.16 FEET TO A POINT; THENCE NORTH 76 DEGREES 26 MINUTES 52 SECONDS WEST A DISTANCE OF 10.00 FEET TO A POINT; THENCE NORTH 31 DEGREES 26 MINUTES 52 SECONDS WEST A DISTANCE OF 7.07 FEET TO A POINT; THENCE NORTH 76 DEGREES 26 MINUTES 52 SECONDS WEST A DISTANCE OF 78.62 FEET TO A POINT; THENCE SOUTH 58 DEGREES 33 MINUTES 08 SECONDS WEST A DISTANCE OF 7.07 FEET TO A POINT; THENCE NORTH 76 DEGREES 26 MINUTES 52 SECONDS WEST A DISTANCE OF 379.73 FEET TO A POINT; THENCE NORTH 31 DEGREES 26 MINUTES 52 SECONDS WEST A DISTANCE OF 7.07 FEET TO A POINT; THENCE NORTH 76 DEGREES 26 MINUTES 52 SECONDS WEST A DISTANCE OF 13.05 FEET TO A POINT; THENCE SOUTH 58 DEGREES 33 MINUTES 08 SECONDS WEST A DISTANCE OF 7.07 FEET TO A POINT; THENCE NORTH 76 DEGREES 26 MINUTES 52 SECONDS WEST A DISTANCE OF 598.56 FEET TO A POINT; THENCE SOUTH 58 DEGREES 33 MINUTES 08 SECONDS WEST A DISTANCE OF 35.36 FEET TO A POINT; THENCE NORTH 76 DEGREES 26 MINUTES 52 SECONDS WEST A DISTANCE OF 200.00 FEET TO A POINT; THENCE NORTH 31 DEGREES 26 MINUTES 52 SECONDS WEST A DISTANCE OF 35.36 FEET TO A POINT; THENCE NORTH 76 DEGREES 26 MINUTES 52 SECONDS WEST A DISTANCE OF 59.30 FEET TO A POINT ON THE WESTERLY PROPERTY LINE OF THE GRANTOR; THENCE ALONG SAID WESTERLY PROPERTY LINE THE FOLLOWING THREE COURSES AND DISTANCES: NORTH 05 DEGREES 55 MINUTES 54 SECONDS EAST A

DISTANCE OF 13.77 FEET TO A POINT; THENCE NORTH 21 DEGREES 11 MINUTES 36 SECONDS EAST A DISTANCE OF 20.47 FEET TO A POINT; THENCE NORTH 25 DEGREES 42 MINUTES 13 SECONDS EAST A DISTANCE OF 5.89 FEET TO A POINT; THENCE DEPARTING SAID WESTERLY PROPERTY LINE SOUTH 76 DEGREES 33 MINUTES 20 SECONDS EAST A DISTANCE OF 460.16 FEET TO A POINT; THENCE SOUTH 76 DEGREES 22 MINUTES 21 SECONDS EAST A DISTANCE OF 696.71 FEET TO A POINT; THENCE SOUTH 76 DEGREES 52 MINUTES 54 SECONDS EAST A DISTANCE OF 48.31 FEET TO A POINT; THENCE SOUTH 76 DEGREES 26 MINUTES 33 SECONDS EAST A DISTANCE OF 201.95 FEET TO A POINT; THENCE SOUTH 76 DEGREES 26 MINUTES 33 SECONDS EAST A DISTANCE OF 232.56 FEET TO A POINT; THENCE SOUTH 77 DEGREES 13 MINUTES 21 SECONDS EAST A DISTANCE OF 29.61 FEET TO A POINT; THENCE SOUTH 76 DEGREES 51 MINUTES 29 SECONDS EAST A DISTANCE OF 201.75 FEET TO A POINT; THENCE SOUTH 75 DEGREES 44 MINUTES 21 SECONDS EAST A DISTANCE OF 49.15 FEET TO A POINT; THENCE SOUTH 76 DEGREES 04 MINUTES 40 SECONDS EAST A DISTANCE OF 105.75 FEET TO A POINT; THENCE SOUTH 76 DEGREES 31 MINUTES 50 SECONDS EAST A DISTANCE OF 230.92 FEET TO A POINT ON THE EASTERLY PROPERTY LINE OF THE GRANTOR; THENCE ALONG SAID EASTERLY PROPERTY LINE SOUTH 04 DEGREES 38 MINUTES 44 SECONDS EAST A DISTANCE OF 43.01 FEET TO THE POINT OF BEGINNING.

SAID TRACT OR PARCEL OF LAND CONTAINS 2.214 ACRES (BEING 96,433 SQUARE FEET) AS SHOWN ON DRAWING NUMBER 26-06-55/LL-437-B-1 & 437-B-2.

PROPOSED TEMPORARY WORK SPACE NO. 2 - COMMENCE FROM AN IRON PIN FOUND (1 INCH IRON PIPE) ON THE SOUTHERLY PROPERTY LINE OF PROPERTY OWNED BY LUTHEREEN POWELL REAVIS HAVING A VIRGINIA STATE PLANE CORDINATE OF (N: 3412235.06', E: 11694448.25', NAD 83, SOUTH ZONE); THENCE ALONG SAID SOUTHERLY PROPERTY LINE SOUTH 85 DEGREES 06 MINUTES 16 SECONDS WEST A DISTANCE OF 508.66 FEET TO A POINT ON THE EASTERLY PROPERTY LINE OF THE GRANTOR; THENCE DEPARTING SAID SOUTHERLY PROPERTY LINE AND ALONG SAID EASTERLY PROPERTY LINE THE FOLLOWING TWO COURSES AND DISTANCES: NORTH 03 DEGREES 06 MINUTES 16 SECONDS EAST A DISTANCE OF 100.00 FEET TO A POINT; THENCE NORTH 04 DEGREES 38 MINUTES 44 SECONDS WEST A DISTANCE OF 267.91 FEET TO A POINT; THENCE DEPARTING SAID EASTERLY PROPERTY LINE NORTH 76 DEGREES 31 MINUTES 50 SECONDS WEST A DISTANCE OF 216.02 FEET TO A POINT; THENCE NORTH 76 DEGREES 04 MINUTES 40 SECONDS WEST A DISTANCE OF 105.44 FEET TO A POINT; THENCE NORTH 75 DEGREES 44 MINUTES 21 SECONDS WEST A DISTANCE OF 49.46 FEET TO A POINT; THENCE NORTH 76 DEGREES 51 MINUTES 29 SECONDS WEST A DISTANCE OF 202.34 FEET TO A POINT; THENCE NORTH 77 DEGREES 13 MINUTES 21 SECONDS WEST A DISTANCE OF 29.44 FEET TO A POINT; THENCE NORTH 76 DEGREES 26 MINUTES 33 SECONDS WEST A DISTANCE OF 75.27 FEET TO A POINT; SAID POINT BEING THE POINT OF BEGINNING; THENCE FROM THE POINT OF BEGINNING AS THUS ESTABLISHED NORTH 76 DEGREES 26 MINUTES 33 SECONDS WEST A DISTANCE OF 134.47 FEET TO A POINT; THENCE NORTH 58 DEGREES 33 MINUTES 08 SECONDS EAST A DISTANCE OF 35.38 FEET TO A POINT; THENCE SOUTH 76 DEGREES 26

MINUTES 52 SECONDS EAST A DISTANCE OF 84.43 FEET TO A POINT; THENCE SOUTH 31 DEGREES 26 MINUTES 52 SECONDS EAST A DISTANCE OF 35.39 FEET TO THE POINT OF BEGINNING.

SAID TRACT OR PARCEL OF LAND CONTAINS 0.063 ACRES (BEING 2,739 SQUARE FEET) AS SHOWN ON DRAWING NUMBER 26-06-55/LL-437-B-2.

PROPOSED TEMPORARY WORK SPACE NO. 3 - COMMENCE FROM AN IRON PIN FOUND (1 INCH IRON PIPE) ON THE SOUTHERLY PROPERTY LINE OF PROPERTY OWNED BY LUTHEREEN POWELL REAVIS HAVING A VIRGINIA STATE PLANE CORDINATE OF (N: 3412235.06', E: 11694448.25', NAD 83, SOUTH ZONE); THENCE ALONG SAID SOUTHERLY PROPERTY LINE SOUTH 85 DEGREES 06 MINUTES 16 SECONDS WEST A DISTANCE OF 508.66 FEET TO A POINT ON THE EASTERLY PROPERTY LINE OF THE GRANTOR; THENCE DEPARTING SAID SOUTHERLY PROPERTY LINE AND ALONG SAID EASTERLY PROPERTY LINE THE FOLLOWING TWO COURSES AND DISTANCES: NORTH 03 DEGREES 06 MINUTES 16 SECONDS EAST A DISTANCE OF 100.00 FEET TO A POINT; THENCE NORTH 04 DEGREES 38 MINUTES 44 SECONDS WEST A DISTANCE OF 267.91 FEET TO A POINT; THENCE DEPARTING SAID EASTERLY PROPERTY LINE NORTH 76 DEGREES 31 MINUTES 50 SECONDS WEST A DISTANCE OF 216.02 FEET TO A POINT; THENCE NORTH 76 DEGREES 04 MINUTES 40 SECONDS WEST A DISTANCE OF 105.44 FEET TO A POINT; THENCE NORTH 75 DEGREES 44 MINUTES 21 SECONDS WEST A DISTANCE OF 49.46 FEET TO A POINT; THENCE NORTH 76 DEGREES 51 MINUTES 29 SECONDS WEST A DISTANCE OF 202.34 FEET TO A POINT; THENCE NORTH 77 DEGREES 13 MINUTES 21 SECONDS WEST A DISTANCE OF 29.44 FEET TO A POINT; THENCE NORTH 76 DEGREES 26 MINUTES 33 SECONDS WEST A DISTANCE OF 378.89 FEET TO A POINT; SAID POINT BEING THE POINT OF BEGINNING; THENCE FROM THE POINT OF BEGINNING AS THUS ESTABLISHED NORTH 76 DEGREES 26 MINUTES 33 SECONDS WEST A DISTANCE OF 55.49 FEET TO A POINT; THENCE NORTH 76 DEGREES 52 MINUTES 54 SECONDS WEST A DISTANCE OF 48.28 FEET TO A POINT; THENCE NORTH 76 DEGREES 22 MINUTES 21 SECONDS WEST A DISTANCE OF 46.53 FEET TO A POINT; THENCE NORTH 58 DEGREES 33 MINUTES 08 SECONDS EAST A DISTANCE OF 35.78 FEET TO A POINT; THENCE SOUTH 76 DEGREES 26 MINUTES 52 SECONDS EAST A DISTANCE OF 100.00 FEET TO A POINT; THENCE SOUTH 31 DEGREES 26 MINUTES 52 SECONDS EAST A DISTANCE OF 35.35 FEET TO THE POINT OF BEGINNING.

SAID TRACT OR PARCEL OF LAND CONTAINS 0.072 ACRES (BEING 3,149 SQUARE FEET) AS SHOWN ON DRAWING NUMBER 26-06-55/LL-437-B-1.

PROPOSED TEMPORARY WORK SPACE NO. 4 - COMMENCE FROM AN IRON PIN FOUND (1 INCH IRON PIPE) ON THE SOUTHERLY PROPERTY LINE OF PROPERTY OWNED BY LUTHEREEN POWELL REAVIS HAVING A VIRGINIA STATE PLANE CORDINATE OF (N: 3412235.06', E: 11694448.25', NAD 83, SOUTH ZONE); THENCE ALONG SAID SOUTHERLY PROPERTY LINE SOUTH 85 DEGREES 06 MINUTES 16 SECONDS WEST A DISTANCE OF 508.66 FEET TO A POINT ON THE EASTERLY PROPERTY LINE OF THE GRANTOR; THENCE DEPARTING SAID SOUTHERLY PROPERTY LINE AND ALONG SAID EASTERLY PROPERTY LINE THE FOLLOWING TWO COURSES AND DISTANCES: NORTH

03 DEGREES 06 MINUTES 16 SECONDS EAST A DISTANCE OF 100.00 FEET TO A POINT; THENCE NORTH 04 DEGREES 38 MINUTES 44 SECONDS WEST A DISTANCE OF 267.91 FEET TO A POINT; THENCE DEPARTING SAID EASTERLY PROPERTY LINE NORTH 76 DEGREES 31 MINUTES 50 SECONDS WEST A DISTANCE OF 216.02 FEET TO A POINT; THENCE NORTH 76 DEGREES 04 MINUTES 40 SECONDS WEST A DISTANCE OF 105.44 FEET TO A POINT; THENCE NORTH 75 DEGREES 44 MINUTES 21 SECONDS WEST A DISTANCE OF 49.46 FEET TO A POINT; THENCE NORTH 76 DEGREES 51 MINUTES 29 SECONDS WEST A DISTANCE OF 202.34 FEET TO A POINT; THENCE NORTH 77 DEGREES 13 MINUTES 21 SECONDS WEST A DISTANCE OF 29.44 FEET TO A POINT; THENCE NORTH 76 DEGREES 26 MINUTES 33 SECONDS WEST A DISTANCE OF 434.38 FEET TO A POINT; THENCE NORTH 76 DEGREES 52 MINUTES 54 SECONDS WEST A DISTANCE OF 48.28 FEET TO A POINT; THENCE NORTH 76 DEGREES 22 MINUTES 21 SECONDS WEST A DISTANCE OF 696.58 FEET TO A POINT; THENCE NORTH 76 DEGREES 33 MINUTES 20 SECONDS WEST A DISTANCE OF 109.63 FEET TO A POINT; SAID POINT BEING THE POINT OF BEGINNING; THENCE FROM THE POINT OF BEGINNING AS THUS ESTABLISHED NORTH 76 DEGREES 33 MINUTES 20 SECONDS WEST A DISTANCE OF 283.83 FEET TO A POINT; THENCE NORTH 58 DEGREES 33 MINUTES 08 SECONDS EAST A DISTANCE OF 35.62 FEET TO A POINT; THENCE SOUTH 76 DEGREES 26 MINUTES 52 SECONDS EAST A DISTANCE OF 234.00 FEET TO A POINT; THENCE SOUTH 31 DEGREES 26 MINUTES 52 SECONDS EAST A DISTANCE OF 34.86 FEET TO THE POINT OF BEGINNING.

SAID TRACT OR PARCEL OF LAND CONTAINS 0.148 ACRES (BEING 6,452 SQUARE FEET) AS SHOWN ON DRAWING NUMBER 26-06-55/LL-437-B-1.

PROPOSED ACCESS ROAD AR-SVLB-89.6 - COMMENCE FROM AN IRON PIN FOUND (2 INCH IRON PIPE) ON THE SOUTHERLY PROPERTY LINE OF THE GRANTOR HAVING A VIRGINIA STATE PLANE CORDINATE OF (N: 3411298.52', E: 11692863.14', NAD 83, SOUTH ZONE); THENCE ALONG SAID SOUTHERLY PROPERTY LINE SOUTH 85 DEGREES 19 MINUTES 34 SECONDS WEST A DISTANCE OF 471.05 FEET TO A POINT ON THE WESTERLY PROPERTY LINE OF THE GRANTOR; THENCE ALONG SAID WESTERLY PROPERTY LINE NORTH 02 DEGREES 50 MINUTES 49 SECONDS WEST A DISTANCE OF 81.28 FEET TO A POINT; SAID POINT BEING THE POINT OF BEGINNING; THENCE FROM THE POINT OF BEGINNING AS THUS ESTABLISHED AND CONTINUING ALONG SAID WESTERLY PROPERTY LINE NORTH 02 DEGREES 50 MINUTES 49 SECONDS WEST A DISTANCE OF 20.27 FEET TO A POINT; THENCE DEPARTING SAID WESTERLY PROPERTY LINE NORTH 77 DEGREES 51 MINUTES 37 SECONDS EAST A DISTANCE OF 4.30 FEET TO A POINT; THENCE NORTH 77 DEGREES 45 MINUTES 05 SECONDS EAST A DISTANCE OF 54.56 FEET TO A POINT; THENCE NORTH 71 DEGREES 17 MINUTES 29 SECONDS EAST A DISTANCE OF 48.96 FEET TO A POINT; THENCE NORTH 57 DEGREES 51 MINUTES 11 SECONDS EAST A DISTANCE OF 35.63 FEET TO A POINT; THENCE NORTH 31 DEGREES 52 MINUTES 05 SECONDS EAST A DISTANCE OF 22.15 FEET TO A POINT; THENCE NORTH 15 DEGREES 58 MINUTES 24 SECONDS EAST A DISTANCE OF 46.79 FEET TO A POINT; THENCE NORTH 13 DEGREES 01 MINUTES 23 SECONDS EAST A DISTANCE OF 52.52 FEET TO A POINT; THENCE NORTH 09 DEGREES 04 MINUTES 54 SECONDS EAST A DISTANCE OF 51.51 FEET TO A POINT; THENCE NORTH 02 DEGREES 50 MINUTES 49 SECONDS WEST A

DISTANCE OF 60.49 FEET TO A POINT; THENCE NORTH 06 DEGREES 00 MINUTES 27 SECONDS WEST A DISTANCE OF 54.67 FEET TO A POINT; THENCE NORTH 05 DEGREES 54 MINUTES 15 SECONDS WEST A DISTANCE OF 56.13 FEET TO A POINT; THENCE NORTH 05 DEGREES 32 MINUTES 59 SECONDS WEST A DISTANCE OF 55.90 FEET TO A POINT; THENCE NORTH 06 DEGREES 37 MINUTES 42 SECONDS EAST A DISTANCE OF 50.35 FEET TO A POINT; THENCE NORTH 15 DEGREES 21 MINUTES 14 SECONDS EAST A DISTANCE OF 45.37 FEET TO A POINT; THENCE NORTH 18 DEGREES 50 MINUTES 57 SECONDS EAST A DISTANCE OF 47.42 FEET TO A POINT; THENCE NORTH 21 DEGREES 02 MINUTES 11 SECONDS EAST A DISTANCE OF 52.42 FEET TO A POINT; THENCE NORTH 22 DEGREES 50 MINUTES 04 SECONDS EAST A DISTANCE OF 53.56 FEET TO A POINT; THENCE NORTH 25 DEGREES 15 MINUTES 50 SECONDS EAST A DISTANCE OF 49.97 FEET TO A POINT; THENCE NORTH 19 DEGREES 44 MINUTES 52 SECONDS EAST A DISTANCE OF 54.36 FEET TO A POINT; THENCE NORTH 22 DEGREES 46 MINUTES 13 SECONDS EAST A DISTANCE OF 54.59 FEET TO A POINT; THENCE NORTH 19 DEGREES 03 MINUTES 44 SECONDS EAST A DISTANCE OF 52.63 FEET TO A POINT; THENCE NORTH 06 DEGREES 40 MINUTES 12 SECONDS EAST A DISTANCE OF 30.39 FEET TO A POINT; THENCE NORTH 05 DEGREES 30 MINUTES 08 SECONDS WEST A DISTANCE OF 49.37 FEET TO A POINT; THENCE NORTH 08 DEGREES 23 MINUTES 56 SECONDS WEST A DISTANCE OF 52.91 FEET TO A POINT; THENCE NORTH 05 DEGREES 14 MINUTES 55 SECONDS EAST A DISTANCE OF 41.93 FEET TO A POINT; THENCE NORTH 09 DEGREES 47 MINUTES 05 SECONDS EAST A DISTANCE OF 52.76 FEET TO A POINT; THENCE NORTH 07 DEGREES 01 MINUTES 41 SECONDS EAST A DISTANCE OF 53.87 FEET TO A POINT; THENCE NORTH 00 DEGREES 30 MINUTES 57 SECONDS EAST A DISTANCE OF 53.52 FEET TO A POINT; THENCE NORTH 03 DEGREES 21 MINUTES 46 SECONDS WEST A DISTANCE OF 52.30 FEET TO A POINT; THENCE NORTH 05 DEGREES 47 MINUTES 18 SECONDS WEST A DISTANCE OF 53.23 FEET TO A POINT; THENCE NORTH 00 DEGREES 09 MINUTES 47 SECONDS WEST A DISTANCE OF 54.15 FEET TO A POINT; THENCE NORTH 10 DEGREES 48 MINUTES 06 SECONDS EAST A DISTANCE OF 35.18 FEET TO A POINT; THENCE NORTH 12 DEGREES 29 MINUTES 10 SECONDS WEST A DISTANCE OF 3.76 FEET TO A POINT; THENCE SOUTH 76 DEGREES 26 MINUTES 52 SECONDS EAST A DISTANCE OF 22.01 FEET TO A POINT; THENCE SOUTH 26 DEGREES 44 MINUTES 35 SECONDS WEST A DISTANCE OF 1.80 FEET TO A POINT; THENCE SOUTH 10 DEGREES 48 MINUTES 06 SECONDS WEST A DISTANCE OF 33.92 FEET TO A POINT; THENCE SOUTH 00 DEGREES 09 MINUTES 47 SECONDS EAST A DISTANCE OF 51.25 FEET TO A POINT; THENCE SOUTH 05 DEGREES 47 MINUTES 18 SECONDS EAST A DISTANCE OF 52.67 FEET TO A POINT; THENCE SOUTH 03 DEGREES 21 MINUTES 46 SECONDS EAST A DISTANCE OF 53.40 FEET TO A POINT; THENCE SOUTH 00 DEGREES 30 MINUTES 57 SECONDS WEST A DISTANCE OF 55.33 FEET TO A POINT; THENCE SOUTH 07 DEGREES 01 MINUTES 41 SECONDS WEST A DISTANCE OF 55.48 FEET TO A POINT; THENCE SOUTH 09 DEGREES 47 MINUTES 05 SECONDS WEST A DISTANCE OF 52.45 FEET TO A POINT; THENCE SOUTH 05 DEGREES 14 MINUTES 55 SECONDS WEST A DISTANCE OF 38.75 FEET TO A POINT; THENCE SOUTH 08 DEGREES 23 MINUTES 56 SECONDS EAST A DISTANCE OF 51.02 FEET TO A POINT; THENCE SOUTH 05 DEGREES 30 MINUTES 08 SECONDS EAST A DISTANCE OF 52.01 FEET TO A POINT; THENCE SOUTH 06 DEGREES 40 MINUTES 12 SECONDS WEST A DISTANCE OF 34.70

FEET TO A POINT; THENCE SOUTH 19 DEGREES 03 MINUTES 44 SECONDS WEST A DISTANCE OF 55.45 FEET TO A POINT; THENCE SOUTH 22 DEGREES 46 MINUTES 13 SECONDS WEST A DISTANCE OF 54.71 FEET TO A POINT; THENCE SOUTH 19 DEGREES 44 MINUTES 52 SECONDS WEST A DISTANCE OF 54.79 FEET TO A POINT; THENCE SOUTH 25 DEGREES 15 MINUTES 50 SECONDS WEST A DISTANCE OF 50.51 FEET TO A POINT; THENCE SOUTH 22 DEGREES 50 MINUTES 04 SECONDS WEST A DISTANCE OF 52.82 FEET TO A POINT; THENCE SOUTH 21 DEGREES 02 MINUTES 11 SECONDS WEST A DISTANCE OF 51.72 FEET TO A POINT; THENCE SOUTH 18 DEGREES 50 MINUTES 57 SECONDS WEST A DISTANCE OF 46.43 FEET TO A POINT; THENCE SOUTH 15 DEGREES 21 MINUTES 14 SECONDS WEST A DISTANCE OF 43.23 FEET TO A POINT; THENCE SOUTH 06 DEGREES 37 MINUTES 42 SECONDS WEST A DISTANCE OF 46.69 FEET TO A POINT; THENCE SOUTH 05 DEGREES 32 MINUTES 59 SECONDS EAST A DISTANCE OF 53.71 FEET TO A POINT; THENCE SOUTH 05 DEGREES 54 MINUTES 15 SECONDS EAST A DISTANCE OF 56.05 FEET TO A POINT; THENCE SOUTH 06 DEGREES 00 MINUTES 27 SECONDS EAST A DISTANCE OF 55.21 FEET TO A POINT; THENCE SOUTH 02 DEGREES 50 MINUTES 49 SECONDS EAST A DISTANCE OF 63.13 FEET TO A POINT; THENCE SOUTH 09 DEGREES 04 MINUTES 54 SECONDS WEST A DISTANCE OF 54.29 FEET TO A POINT; THENCE SOUTH 13 DEGREES 01 MINUTES 23 SECONDS WEST A DISTANCE OF 53.72 FEET TO A POINT; THENCE SOUTH 15 DEGREES 58 MINUTES 24 SECONDS WEST A DISTANCE OF 50.09 FEET TO A POINT; THENCE SOUTH 31 DEGREES 52 MINUTES 05 SECONDS WEST A DISTANCE OF 29.56 FEET TO A POINT; THENCE SOUTH 57 DEGREES 51 MINUTES 11 SECONDS WEST A DISTANCE OF 42.60 FEET TO A POINT; THENCE SOUTH 71 DEGREES 17 MINUTES 29 SECONDS WEST A DISTANCE OF 52.44 FEET TO A POINT; THENCE SOUTH 77 DEGREES 45 MINUTES 05 SECONDS WEST A DISTANCE OF 55.71 FEET TO A POINT; THENCE SOUTH 77 DEGREES 51 MINUTES 37 SECONDS WEST A DISTANCE OF 7.59 FEET TO THE POINT OF BEGINNING.

SAID TRACT OR PARCEL OF LAND CONTAINS 0.712 ACRES (BEING 31,013 SQUARE FEET) AS SHOWN ON DRAWING NUMBER 26-06-55/LL-437-B-3.